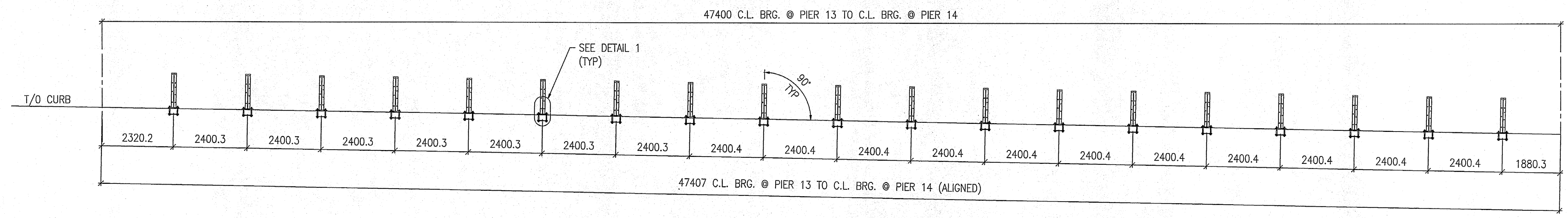
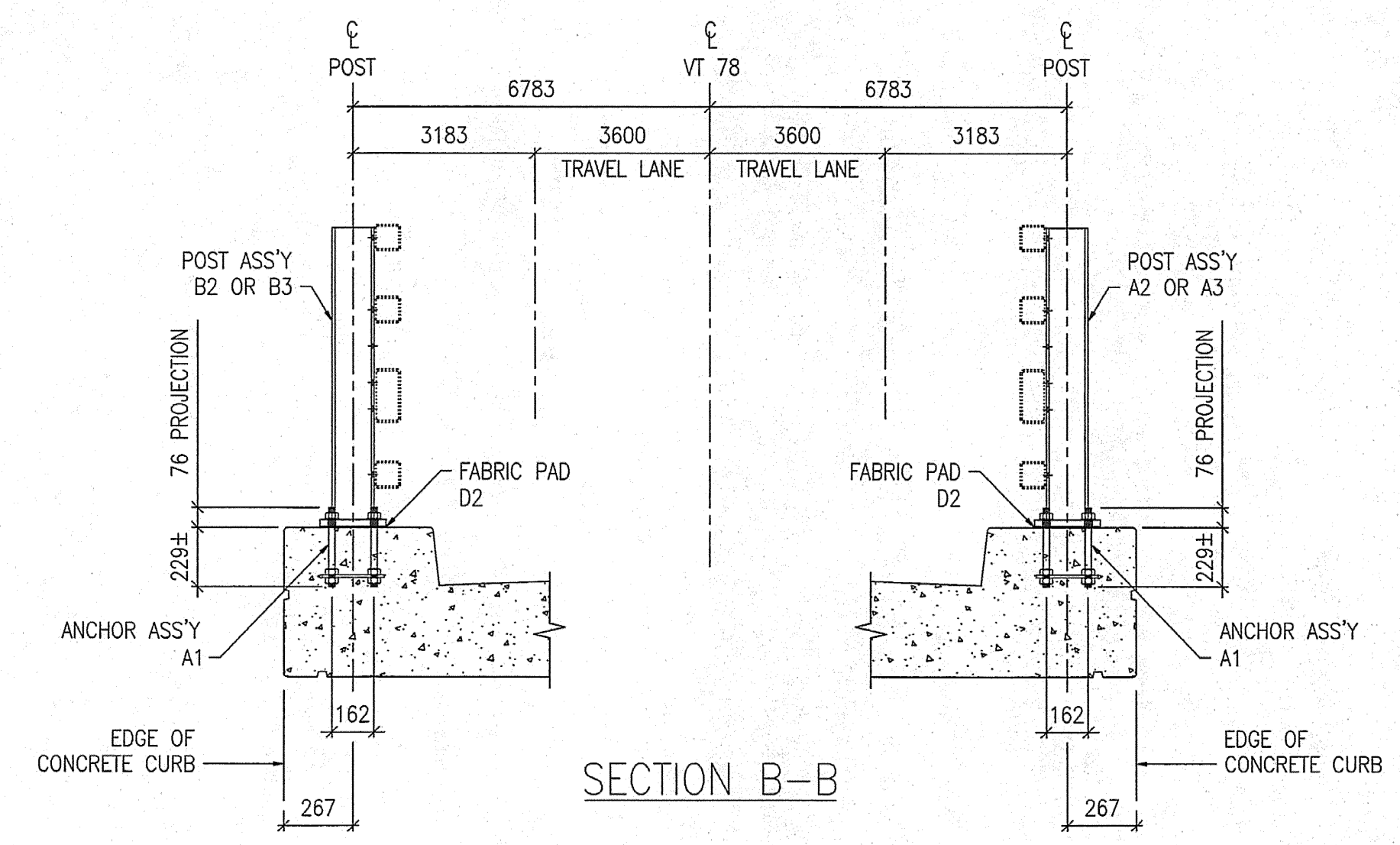


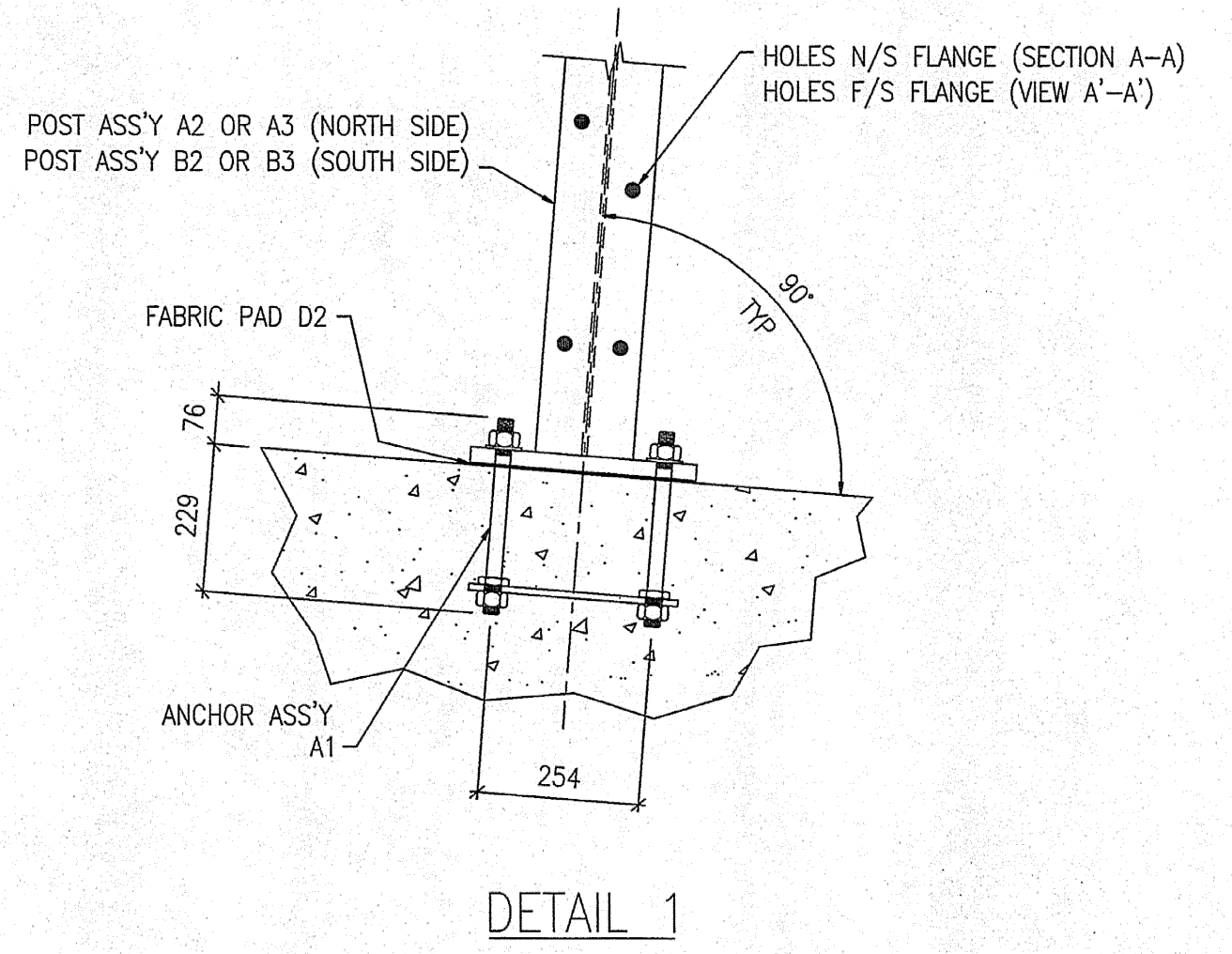
FOR APPROVAL



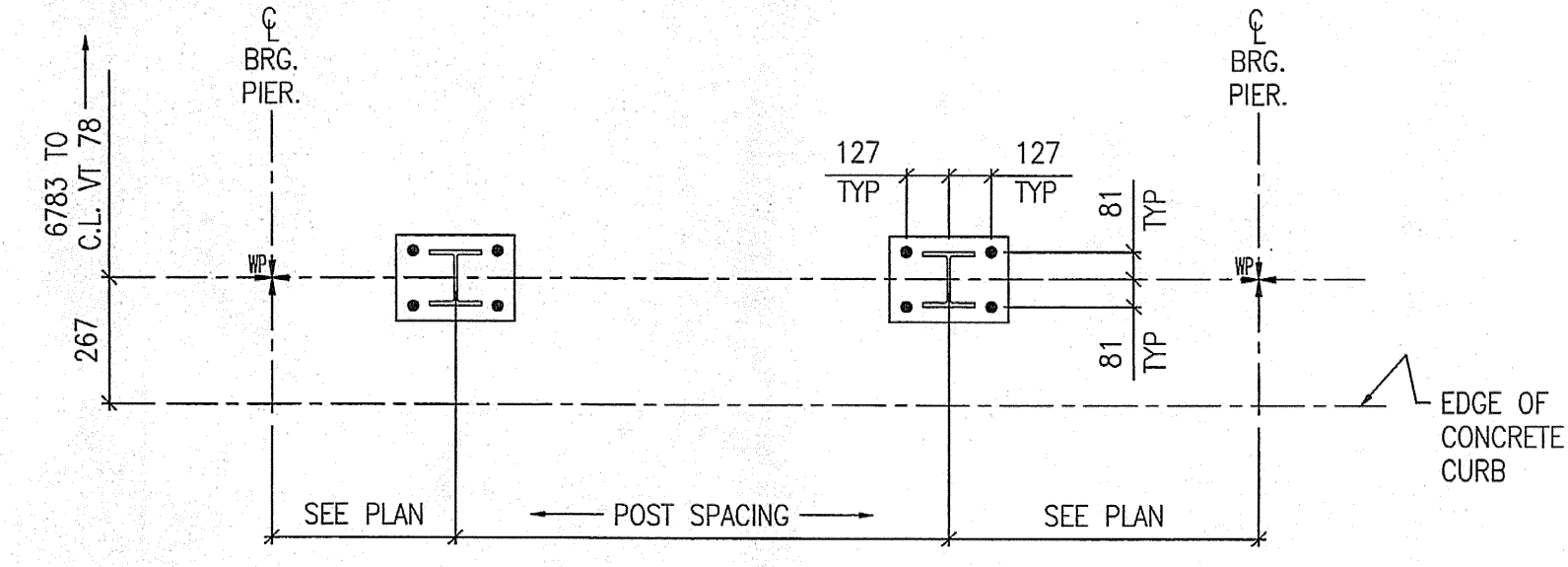
SECTION A-A
VIEW A'-A' (SIM)



SECTION B-B



DETAIL 1



TYPICAL RAILING POST LAYOUT

SHOP DRAWING REVIEW	
<input type="checkbox"/> REVIEWED AS REQUIRED BY THE CONSTRUCTION CONTRACT DOCUMENTS AND APPLICABLE SPECIFICATIONS AND REQUIREMENTS CONTAINED IN THE CONSTRUCTION CONTRACT DOCUMENTS.	<input type="checkbox"/> REJECTED
<input type="checkbox"/> CORRECTIONS OR COMMENTS MADE ON THE SHOP DRAWINGS DURING THIS REVIEW.	<input type="checkbox"/> REVISE AND RESUBMIT
<input type="checkbox"/> RELIEVE CONTRACTOR FROM COMPLIANCE WITH REQUIREMENTS OF THE DRAWINGS AND DESIGN CONCEPT OF THE PROJECT AND GENERAL COMPLIANCE WITH THE INFORMATION GIVEN IN THE CONTRACT DOCUMENTS. THE CONTRACTOR IS RESPONSIBLE FOR CORRECTING AND CORRELATING ALL QUANTITIES AND DIMENSIONS; SELECTING FABRICATION PROCEDURES AND TECHNIQUES OF CONSTRUCTION; COORDINATING HIS WORK WITH THAT OF ALL OTHER TRADES; AND PERFORMING HIS WORK IN A SAFE AND SATISFACTORY MANNER.	<input type="checkbox"/> FURNISH AS NOT REJECTED
VHB Vanasse Hangen Brustlin, Inc. Engineers, Planners, and Scientists Six Bedford Place, Kilton Rd. Bedford, NH 03110 603.884.0988	Job Number: 50111 Reviewed By: <i>[Signature]</i> Date: 7-10

- NOTES:
1. FOR BRIDGE RAILING ERECTION PLAN SEE DRAWING E25.
 2. ALL RAIL POST ASSEMBLIES TO BE ERECTED WITH FLANGE HOLES FACING CENTER OF BRIDGE.

MAT'L : SEE GN-1	FIELD BOLTS
HOLES : 22Ø (7/8") U.N.O.	GRADE: A325
WELD :	
ELECTRODE : E70XX	
PREP : SEE GN-1	
PAINT : SEE GN-1	
1 11/01/05 JM RE-ISSUED FOR APPROVAL BH	
0 09/06/04 JM ISSUED FOR APPROVAL BH	
REV. DATE BY DESCRIPTION	CHK
WORK	NETC 4 RAIL-BRIDGE RAILING VT. ROUTE 78 OVER MISSISQUOI BAY ALBURG - SWANTON, VERMONT
DRAWING	RAIL POST ANCHOR PLAN - SPAN 14
SCALE: N.T.S.	SHEET E14 Δ
DRAWN: JM	CIANBRO CORPORATION PITTSFIELD MAINE
CHECK: BH	JOB 050004