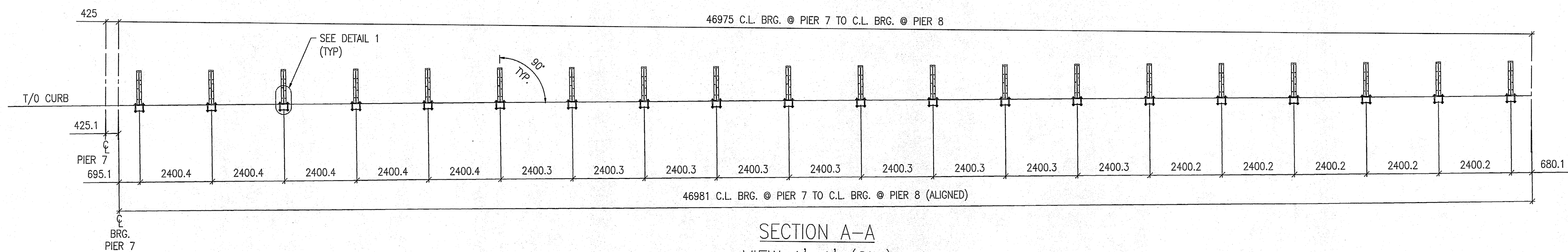
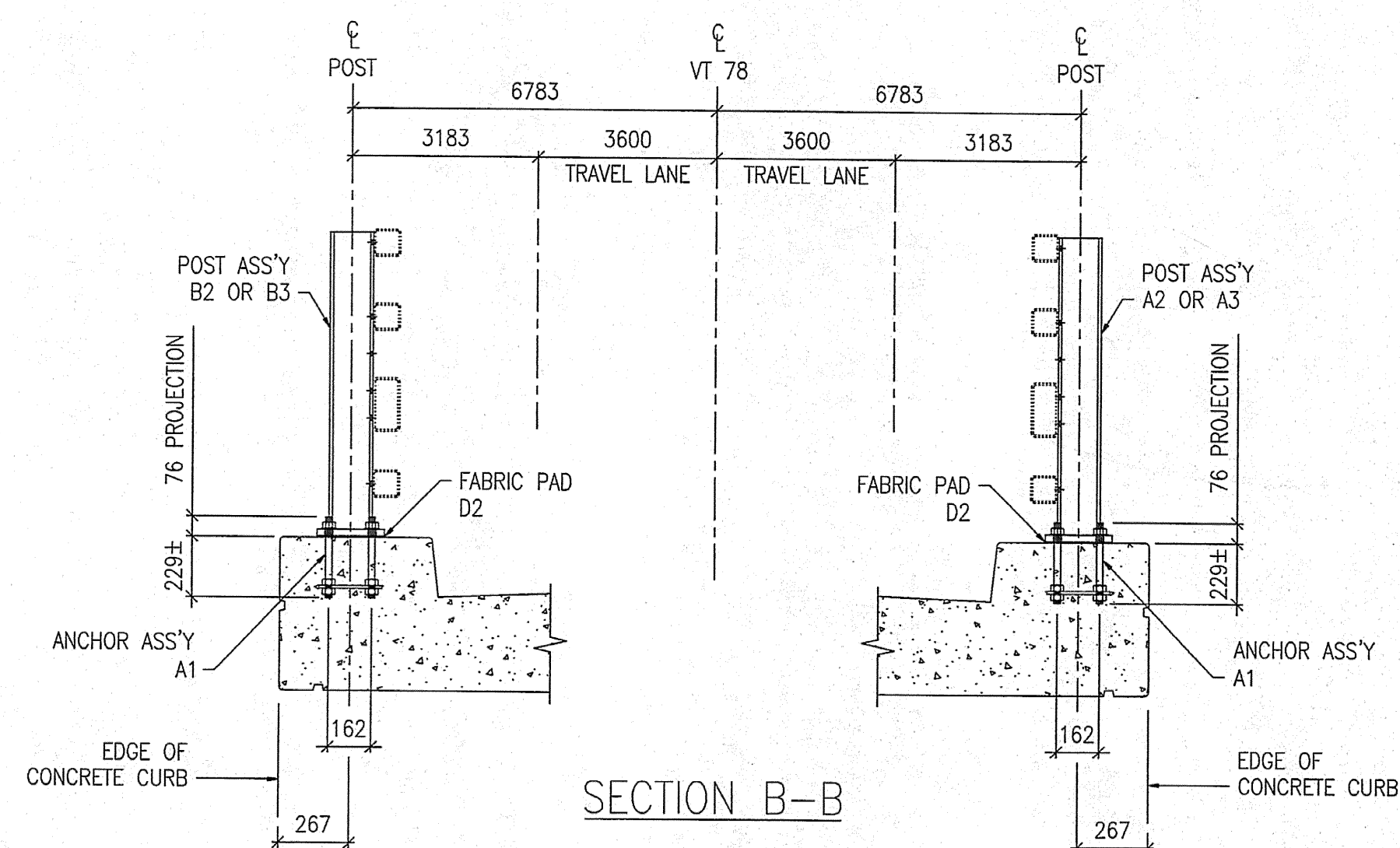


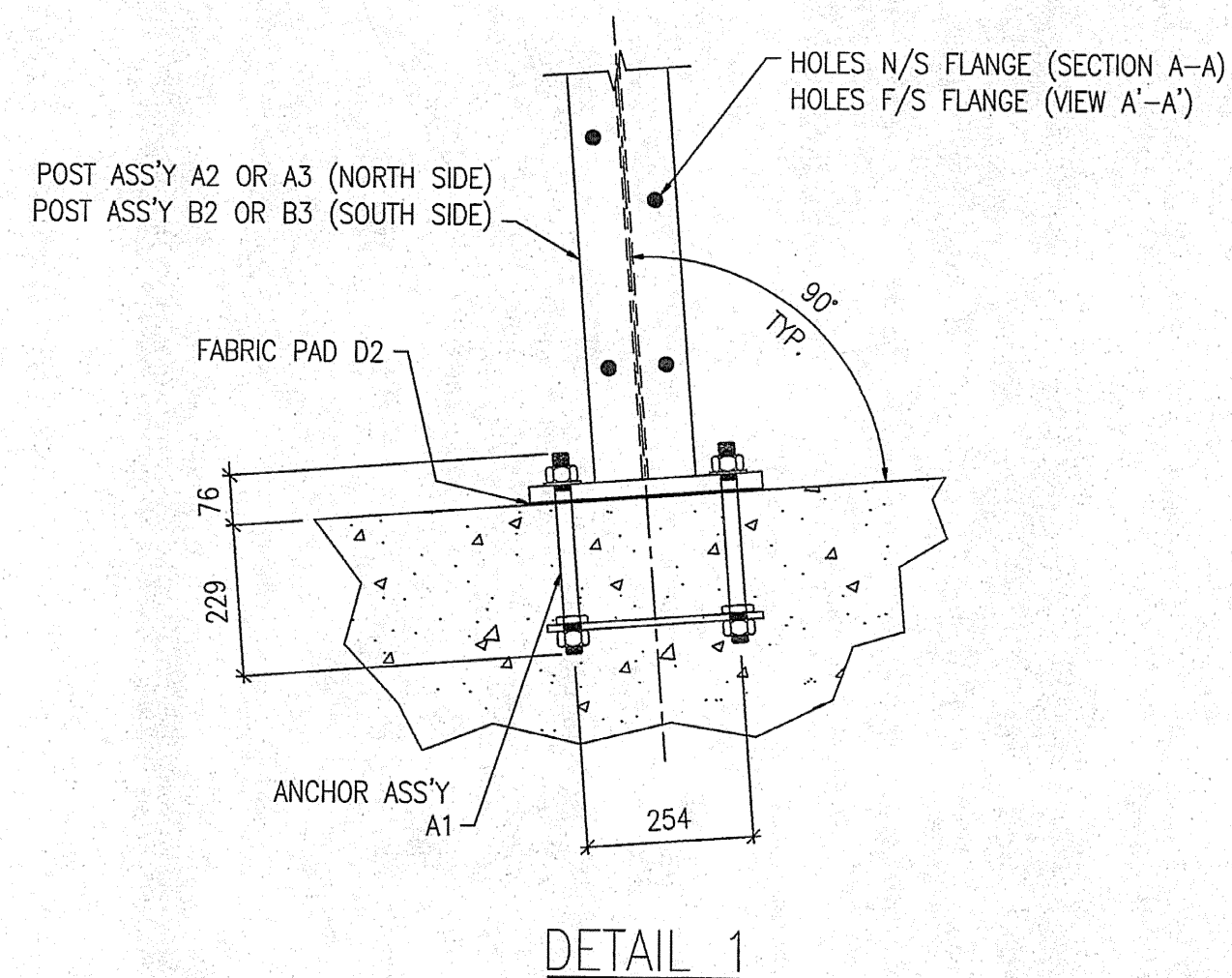
**FOR APPROVAL**



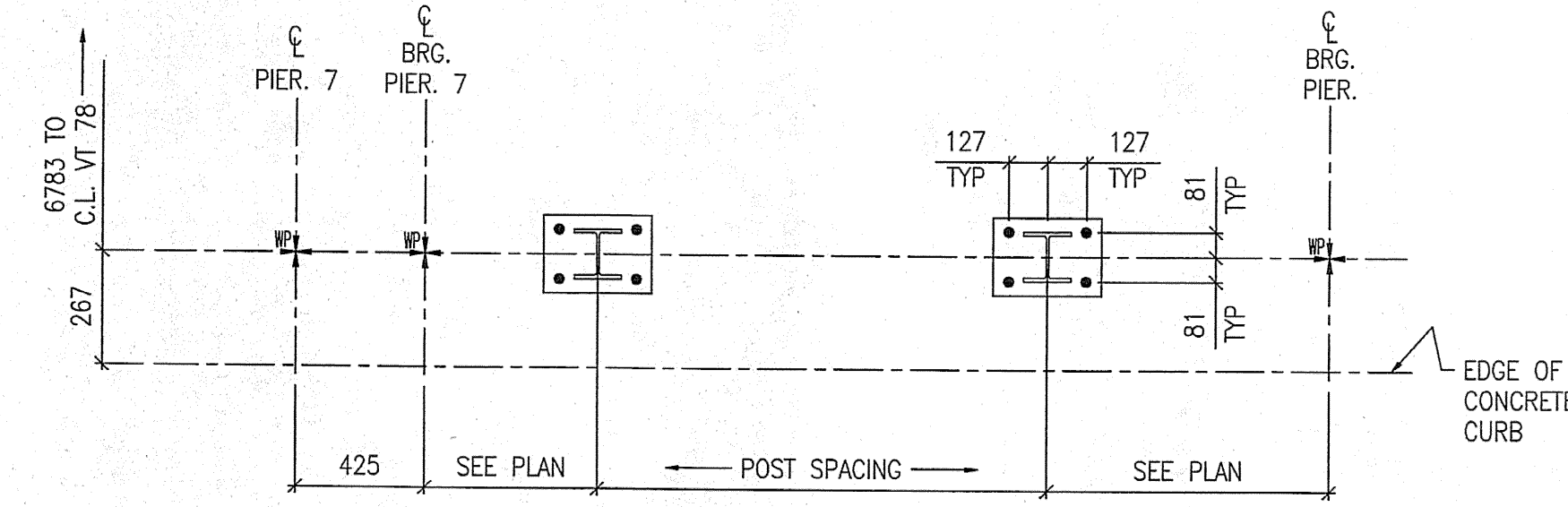
SECTION A-A  
VIEW A'-A' (SIM)



SECTION B-B



DETAIL 1



TYPICAL RAILING POST LAYOUT

SHOP DRAWING REVIEW	
<input type="checkbox"/>	REVIEWED AS REQUIRED BY THE CONSTRUCTION CONTRACT DOCUMENTS AND APPROPRIATE LIMITATIONS AND REQUIREMENTS CONTAINED IN THE CONSTRUCTION CONTRACT DOCUMENTS.
<input type="checkbox"/>	REJECTED
<input type="checkbox"/>	REUSE AND RESUBMIT
<input checked="" type="checkbox"/>	FURNISH AT THE PERMIT OFFICE
CORRECTIONS OR COMMENTS MADE ON THE SHOP DRAWINGS DURING THIS REVIEW SHALL BE RELIED UPON BY THE CONTRACTOR FOR COMPLIANCE WITH REQUIREMENTS OF THE DRAWINGS AND SPECIFICATIONS. THIS CHECK IS ONLY FOR REVIEW OF GENERAL COMPLIANCE WITH THE DESIGN CONCEPT OF THE PROJECT AND GENERAL COMPLIANCE WITH THE INFORMATION PROVIDED IN THE CONTRACT DOCUMENTS. THE CONTRACTOR IS RESPONSIBLE FOR CORRECTING ANY DISCREPANCIES, CORRELATING ALL QUANTITIES AND DIMENSIONS, SELECTING FABRICATION PROCEDURES AND TECHNIQUES OF CONSTRUCTION, COORDINATING HIS WORK WITH THAT OF ALL OTHER CONTRACTORS, AND PERFORMING HIS WORK IN A SAFE AND SATISFACTORY MANNER.	
VHB	Vanasse Hangen Brustlin, Inc. Engineers, Planners, and Scientists 100 South Main Street, Suite 200 Portland, ME 04101 Tel: (603) 763-1100 Fax: (603) 763-1101
Job Number: 5-0111	Reviewed By: [Signature]
Date: 7-7-05	

**NOTES:**

- FOR BRIDGE RAILING ERECTION PLAN SEE DRAWING E25.
- ALL RAIL POST ASSEMBLIES TO BE ERECTED WITH FLANGE HOLES FACING CENTER OF BRIDGE.

MATERIALS		FIELD BOLTS		
MAT'L : SEE GN-1	HOLES : 22Ø (7/8") U.N.O.	GRADE: A325		
WELD :	ELECTRODE : E70XX			
PREP : SEE GN-1	PAINT : SEE GN-1			
REV.	DATE	BY	DESCRIPTION	CHK
1	11/01/05	JM	RE-ISSUED FOR APPROVAL	BH
0	09/06/04	JM	ISSUED FOR APPROVAL	BH
WORK: NETC 4 RAIL-BRIDGE RAILING VT. ROUTE 78 OVER MISSISQUOI BAY ALBURG - SWANTON, VERMONT				
DRAWING: RAIL POST ANCHOR PLAN - SPAN 8				
SCALE: N.T.S.	CIANBRO CORPORATION PITTSFIELD MAINE	SHEET E8	JOB 050004	
DRAWN: JM	CHECK: BH			