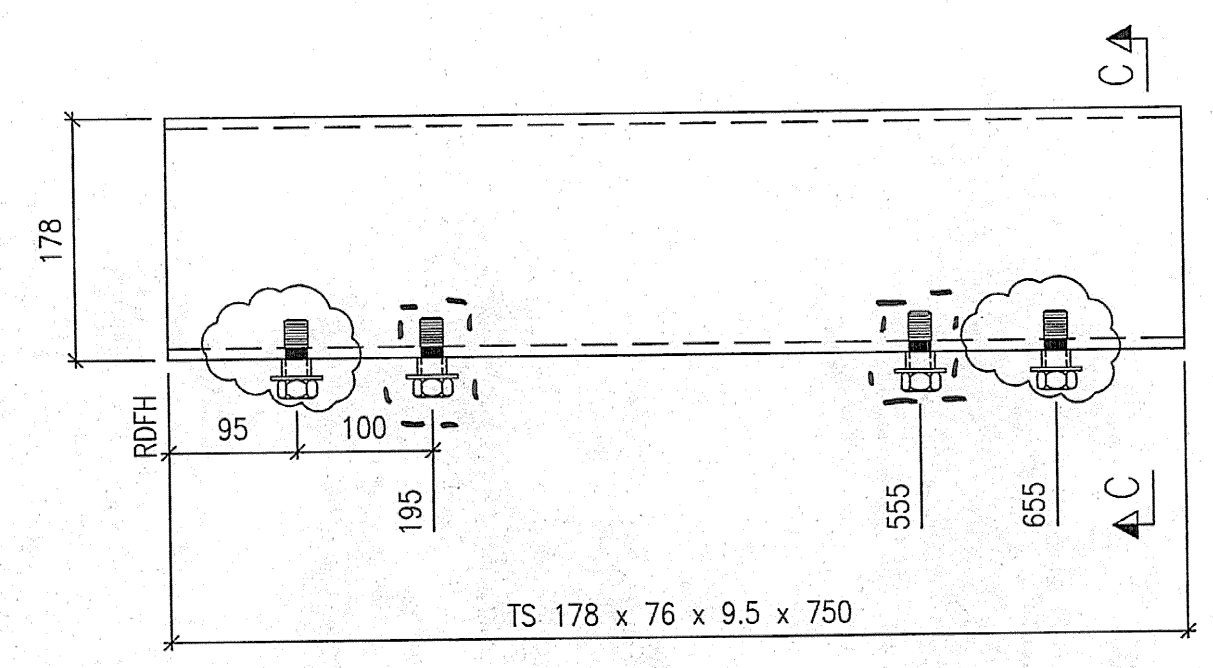
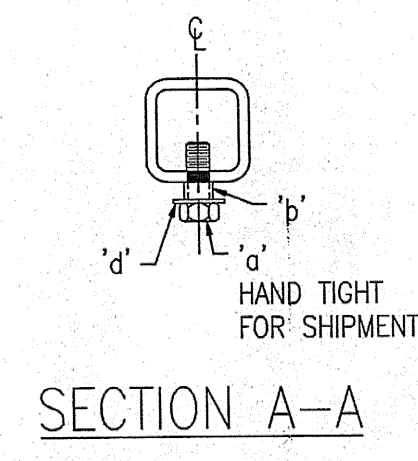
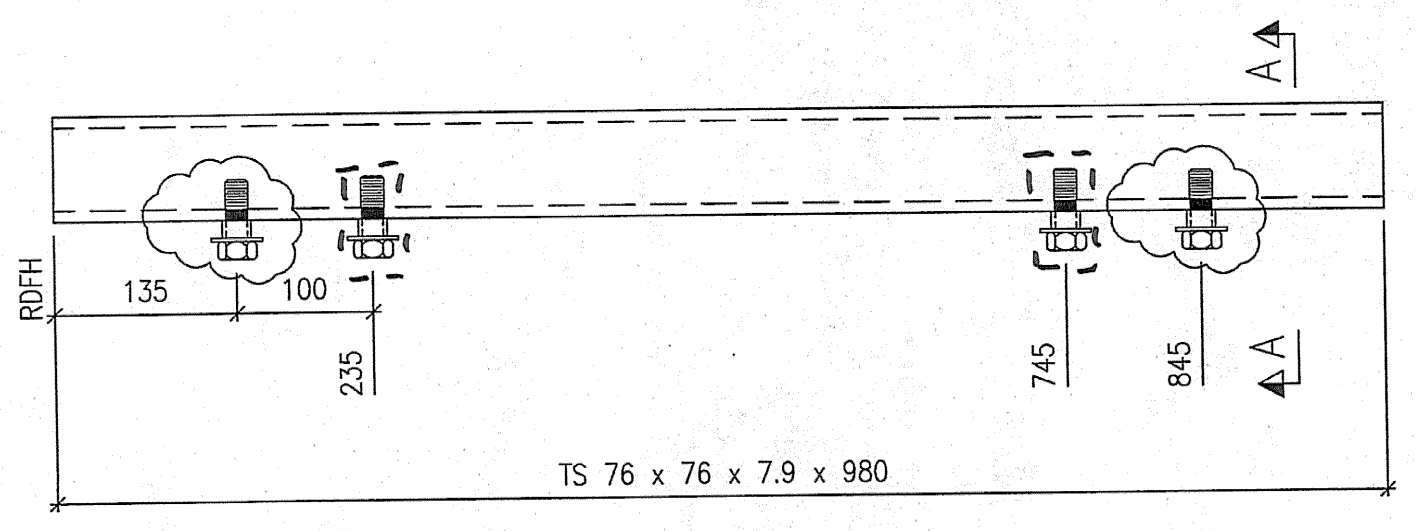
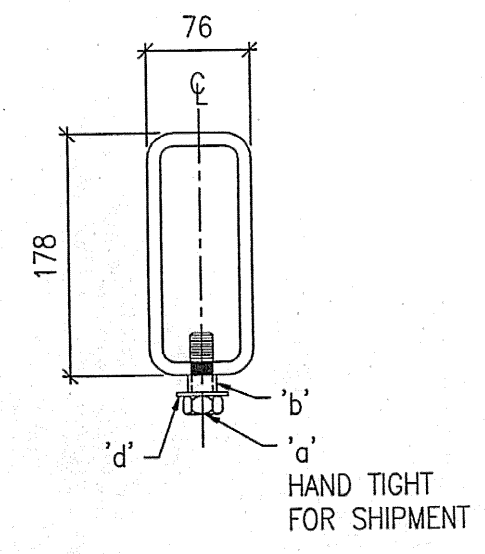


A4 ~ 12 REQ'D

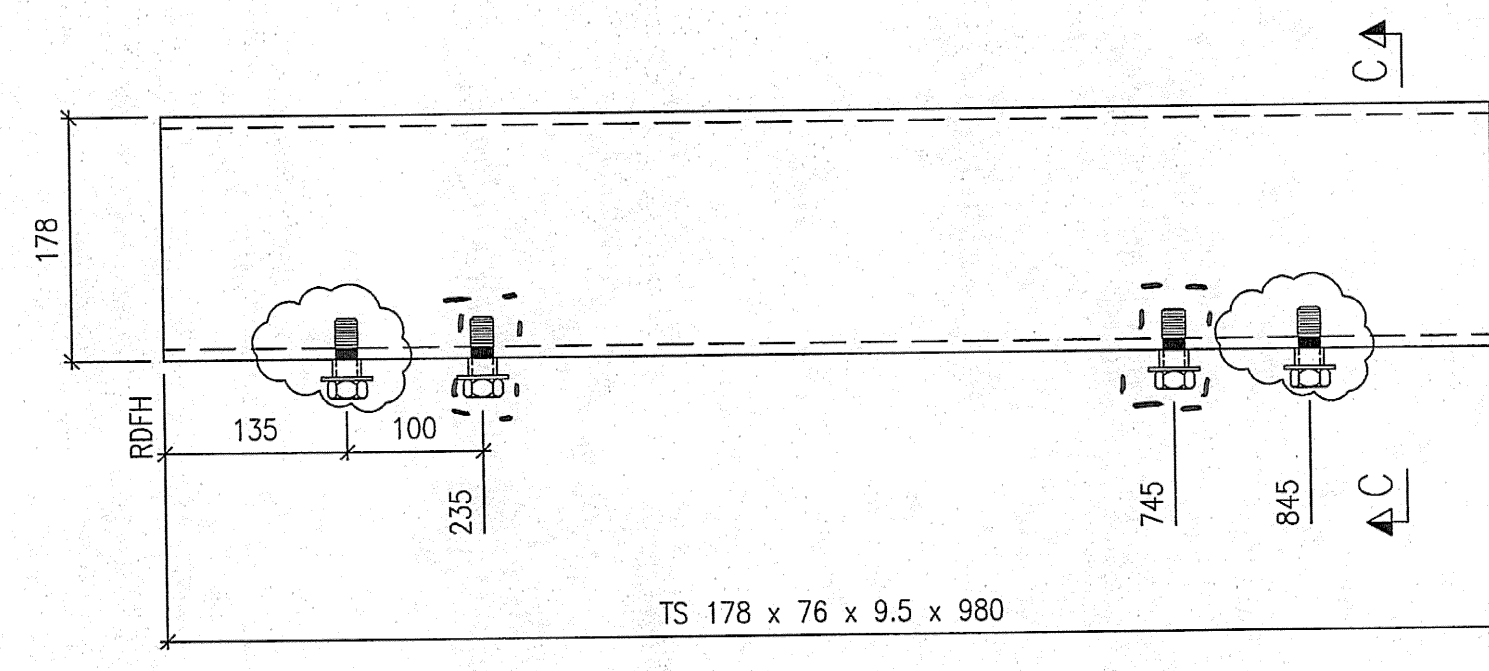
HOWEVER, BACKING NUTS REMOVED AT THESE LOCATIONS TYP.



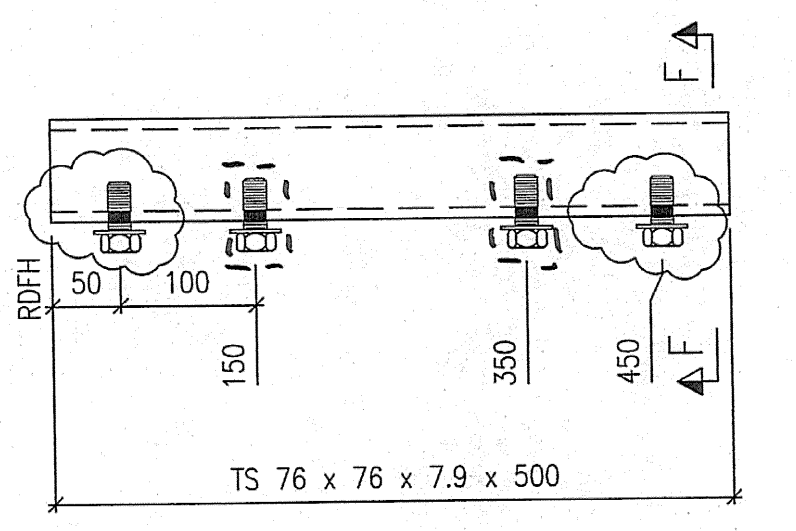
B4 ~ 4 REQ'D



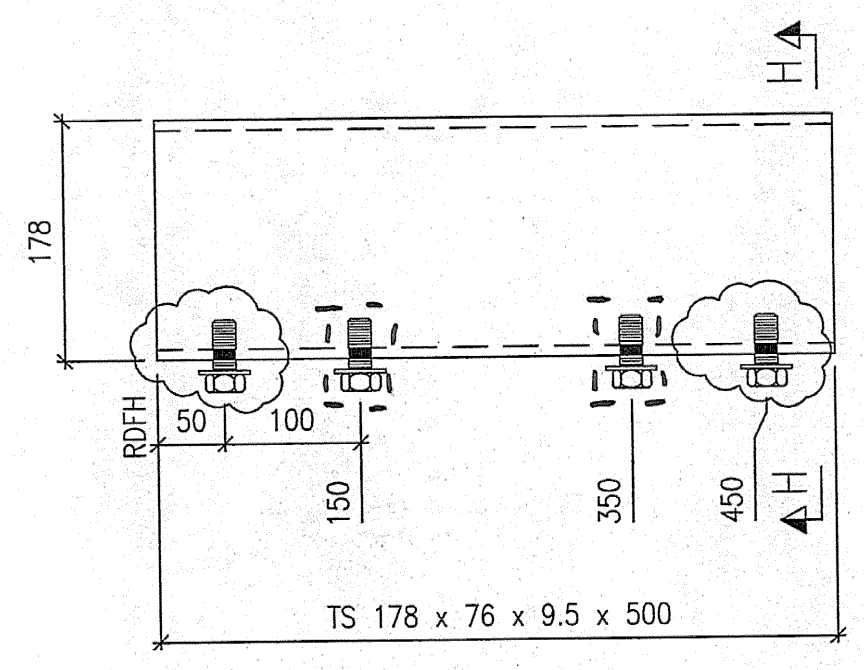
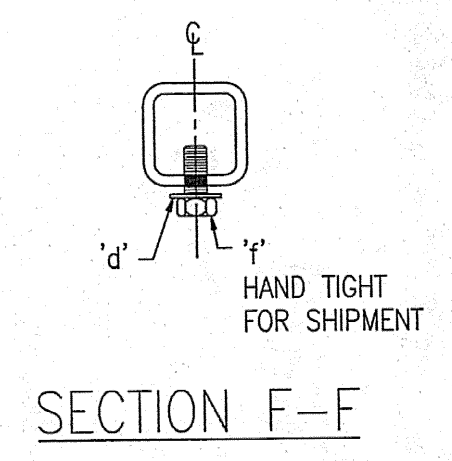
C4 ~ 12 REQ'D



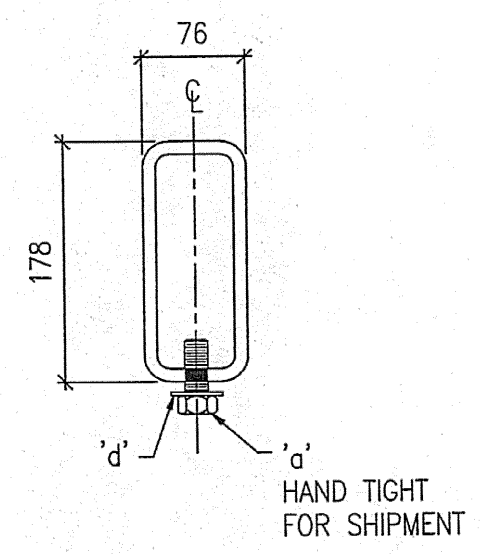
D4 ~ 4 REQ'D



F4 ~ 528 REQ'D



H4 ~ 176 REQ'D



ADD BACKER NUTS + TACK WELD DETAIL TO SECTIONS + BILL OF MAT'L LIST

BILL OF MATERIAL					
MARK	QTY.	MATERIAL	LENGTH	GR.	REMARKS
A4	12	TS 76x76 x 7.9	750		TAPPED HD
'd'	48	M16 BOLT	44		AASHTO M 164M TYPE 1
'b'	48	20# PIPE SCH. 40	13		
'd'	48	M16 FLAT WASHER			ASTM F436
B4	4	TS 178x76 x 9.5	750		TAPPED HD
'd'	16	M16 BOLT	44		AASHTO M 164M TYPE 1
'b'	16	20# PIPE SCH. 40	13		
'd'	16	M16 FLAT WASHER			ASTM F436
C4	12	TS 76x76 x 7.9	980		TAPPED HD
'd'	48	M16 BOLT	44		AASHTO M 164M TYPE 1
'b'	48	20# PIPE SCH. 40	13		
'd'	48	M16 FLAT WASHER			ASTM F436
D4	4	TS 178x76 x 9.5	980		TAPPED HD
'd'	16	M16 BOLT	44		AASHTO M 164M TYPE 1
'b'	16	20# PIPE SCH. 40	13		
'd'	16	M16 FLAT WASHER			ASTM F436
F4	528	TS 76x76 x 7.9	500		TAPPED HD
'f'	2112	M16 BOLT	38		AASHTO M 164M TYPE 1
'd'	2112	M16 FLAT WASHER			ASTM F436
G4	176	TS 178x76 x 9.5	500		TAPPED HD
'a'	704	M16 BOLT	44		AASHTO M 164M TYPE 1
'd'	704	M16 FLAT WASHER			ASTM F436
					TOTAL WEIGHT:

SHOP DRAWING REVIEW

REVISIONS REQUIRED BY THE CONSTRUCTION CONTRACT DOCUMENTS AND APPROVED, BUT ONLY TO THE EXTENT OF THE DESIGN CONCEPT OF THE WORK, AND SUBJECT TO THE LIMITATIONS AND REQUIREMENTS SET FORTH IN THE CONSTRUCTION CONTRACT DOCUMENTS.

REJECTED REVISED AND RE-SUBMITTED APPROVED AS CORRECTED

CORRECTIONS OR COMMENTS MADE ON THIS DRAWING ARE REVEALED AND NOTED ON THE DRAWING. THE CONTRACTOR SHALL BE RESPONSIBLE FOR VERIFYING THAT THE DESIGN CONCEPT OF THE WORK IS IN FULL COMPLIANCE WITH THE REQUIREMENTS AND CONDITIONS OF THE CONTRACT DOCUMENTS. THE CONTRACTOR SHALL BE RESPONSIBLE FOR VERIFYING THAT THE CONTRACT DOCUMENTS, THE CONTRACTOR'S DRAWINGS, AND THE INFORMATION OBTAINED FROM THE FIELD ARE IN FULL COMPLIANCE WITH THE REQUIREMENTS AND CONDITIONS OF THE CONTRACT DOCUMENTS. THE CONTRACTOR SHALL BE RESPONSIBLE FOR VERIFYING THAT THE CONTRACT DOCUMENTS, THE CONTRACTOR'S DRAWINGS, AND THE INFORMATION OBTAINED FROM THE FIELD ARE IN FULL COMPLIANCE WITH THE REQUIREMENTS AND CONDITIONS OF THE CONTRACT DOCUMENTS.

Job Number: **SOA11**
 Reviewed By: **JM**
 Date: **7-7-01**

VHB
 Vermont Highway Builders, Inc.
 Engineers, Planners, and Scientists
 100 North Main Street
 Montpelier, VT 05602
 (802) 241-1111

FOR APPROVAL

MAT'L : ASTM A500 GR B	FIELD BOLTS
HOLES : SEE NOTE 1	GRADE: A325
WELD :	
ELECTRODE : E70XX	
PREP : SEE GN-1	
PAINT : SEE GN-1	

2	03/25/05	RC	BACKING NUTS REMOVED	BH
1	11/01/05	JM	RE-ISSUED FOR APPROVAL	BH
0	08/06/04	JM	ISSUED FOR APPROVAL	BH
REV.	DATE	BY	DESCRIPTION	CHK

WORK: NETC 4 RAIL-BRIDGE RAILING
 VT. ROUTE 78 OVER MISSISQUOI BAY
 ALBURG - SWANTON, VERMONT

DRAWING: BRIDGE RAIL TUBE SPLICE DETAILS

SCALE: N.T.S.	CIAMBRO CORPORATION PITTSFIELD MAINE	SHEET
DRAWN: JM		04
CHECK: BH		JOB 050004

- NOTES:
- ALL HOLES TO BE DRILLED AND TAPPED TO SUIT M16 AASHTO M 164M TYPE 1 BOLT.
 - ALL PARTS TO BE GALVANIZED AFTER FABRICATION IN ACCORDANCE WITH AASHTO M 111M, EXCEPT THAT HARDWARE SHALL MEET THE REQUIREMENTS OF AASHTO M 232M.
 - REFERENCE ERECTION DRAWINGS E24, E25 AND E26.