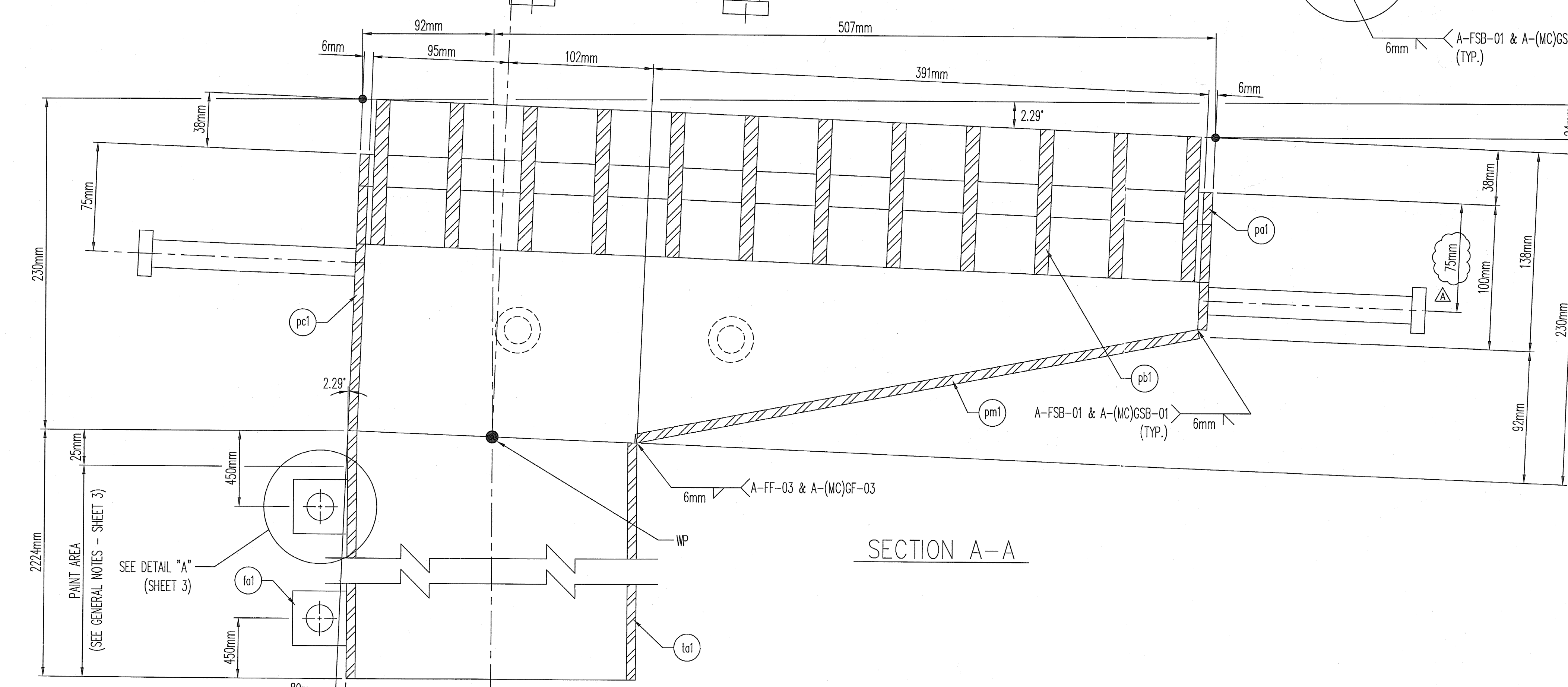
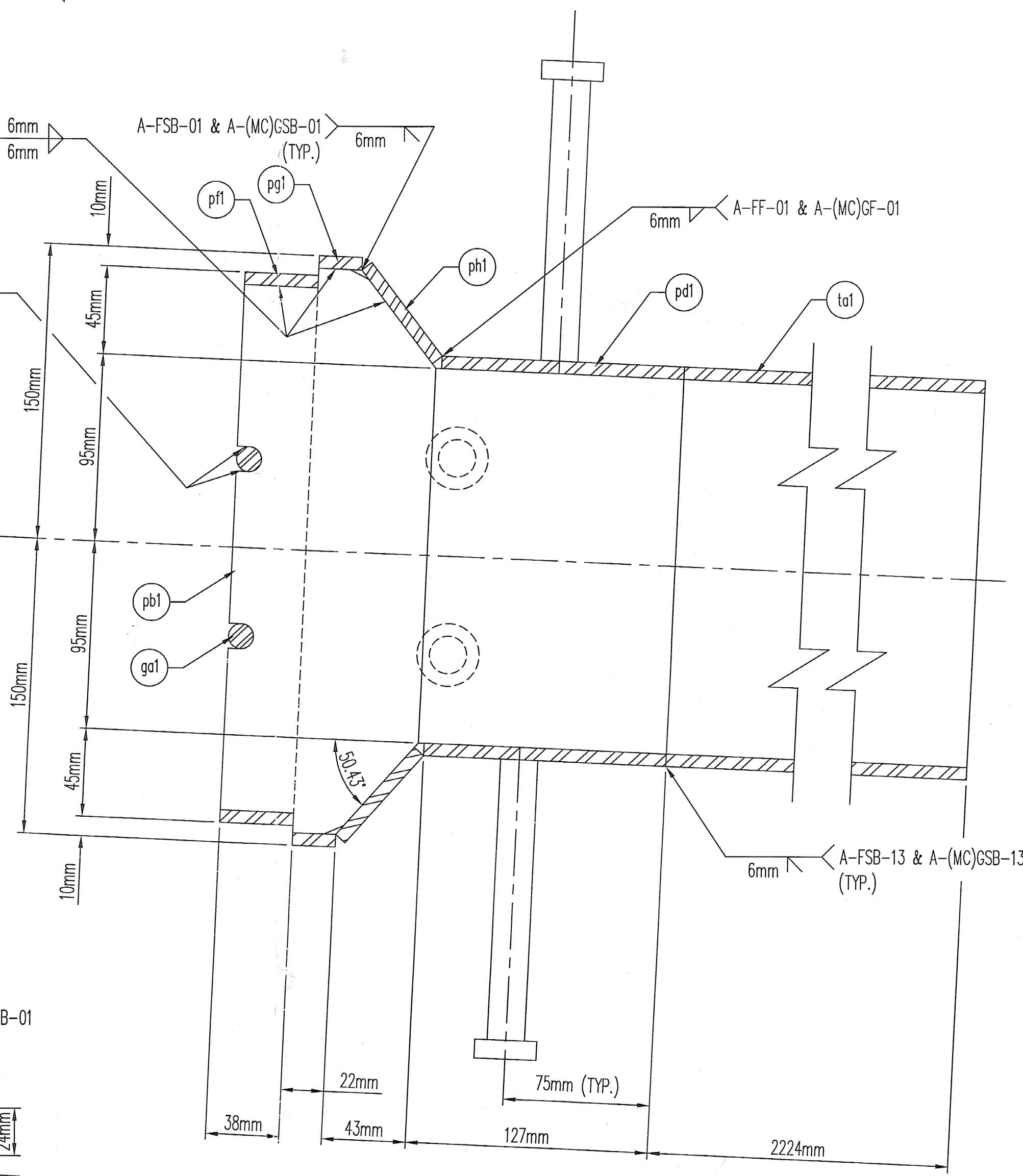


22 - SCUPPER ASSEMBLY - 1A



SECTION A-A



SECTION B-B

SCUPPER DETAILS
(ASSEMBLY 1A)

LOCATED ON NORTH & SOUTH SIDE OF VT 78
@ THE FOLLOWING LOCATIONS:
STA. 10+993.700 STA. 11+562.500
STA. 11+088.500 STA. 11+657.300
STA. 11+183.300 STA. 11+752.100
STA. 11+278.100 STA. 11+846.900
STA. 11+372.900 STA. 11+941.700
STA. 12+036.500

SHOP DRAWING REVIEW

REVIEWED AS REQUIRED BY THE CONSTRUCTION CONTRACT DOCUMENTS AND APPROVED, BUT ONLY FOR CONFORMANCE TO THE DESIGN CONCEPT OF THE WORK, AND SUBJECT TO FURTHER LIMITATIONS AND REQUIREMENTS CONTAINED IN THE CONSTRUCTION CONTRACT DOCUMENTS.

REJECTED REVISE AND RESUBMIT FURNISH AS CORRECTED

CORRECTIONS OR COMMENTS MADE ON THE SHOP DRAWINGS DURING THIS REVIEW DO NOT RELIEVE CONTRACTOR FROM COMPLIANCE WITH REQUIREMENTS OF THE DRAWINGS AND SPECIFICATIONS. THIS CHECK IS ONLY FOR REVIEW OF GENERAL CONFORMANCE WITH THE DESIGN CONCEPT OF THE PROJECT AND GENERAL COMPLIANCE WITH THE INFORMATION GIVEN IN THE CONTRACT DOCUMENTS. THE CONTRACTOR IS RESPONSIBLE FOR: OBTAINING AND CORRELATING ALL QUANTITIES AND DIMENSIONS; SELECTING FABRICATION PROCESSES AND TECHNIQUES OF CONSTRUCTION; COORDINATING HIS WORK WITH THAT OF ALL OTHER TRADES; AND PERFORMING HIS WORK IN A SAFE AND SATISFACTORY MANNER.

VHB Vanasse Hangen Brustlin, Inc.
Engineers, Planners, and Scientists
Six Bedford Farms, Kilton Rd.
Bedford, NH 03110 603 664 9988

Job Number: 50911
Reviewed By: [Signature]
Date: 7-7-05

D.S. BROWN

300 E. CHERRY STREET
NORTH BALTIMORE, OHIO 45872
419.257.3561
FAX: 419.257.0332

4201 NOREX DRIVE
CHASKA, MINNESOTA 55318
952.368.3000
FAX: 952.448.7000
DSBROWN.COM

REV.	DESCRIPTION	DATE	RES	JEB	DET.	CKD.
A	MODIFIED STUD ANCHOR LOCATIONS ON SCUPPER	06/21/05	RES	JEB		
	LOCATION - VT 78 OVER MISSISQUOI BAY				ITEM	QUANTITY
	BRIDGE - 2				-	-
	PROJECT NO. - BRF 036-1 (1)				-	-
	CITY - ALBURG AND SWANTON				-	-
	P.O. NO. - P078559 MIS				-	-
	DESIGNER - VANASSE HANGEN BRUSTLIN, INC.				-	-
	CUSTOMER - CIAMBRO CORPORATION				-	-
DESCRIPTION: SCUPPER DETAILS		SCALE: N.T.S.	DRAWN BY: RES	CHECKED BY: JEB	DATE: 03-24-05	BRIDGE SHEET: 1 OF 3
COUNTIES OF GRAND ISLE AND FRANKLIN, VERMONT		PROJECT NUMBER: 12244	PRODUCT CODE: 1235	RELEASE: 1	SHEET: 1	