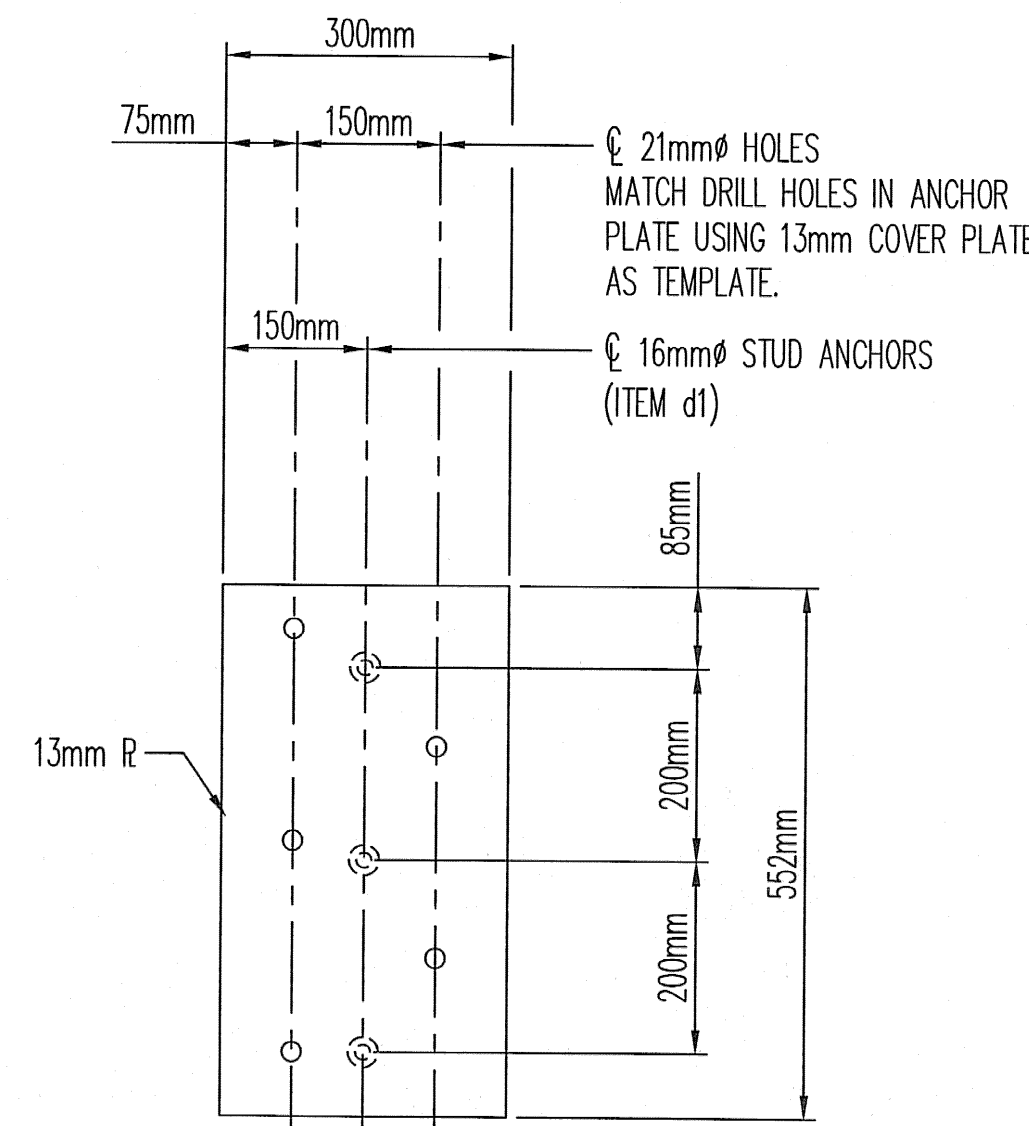
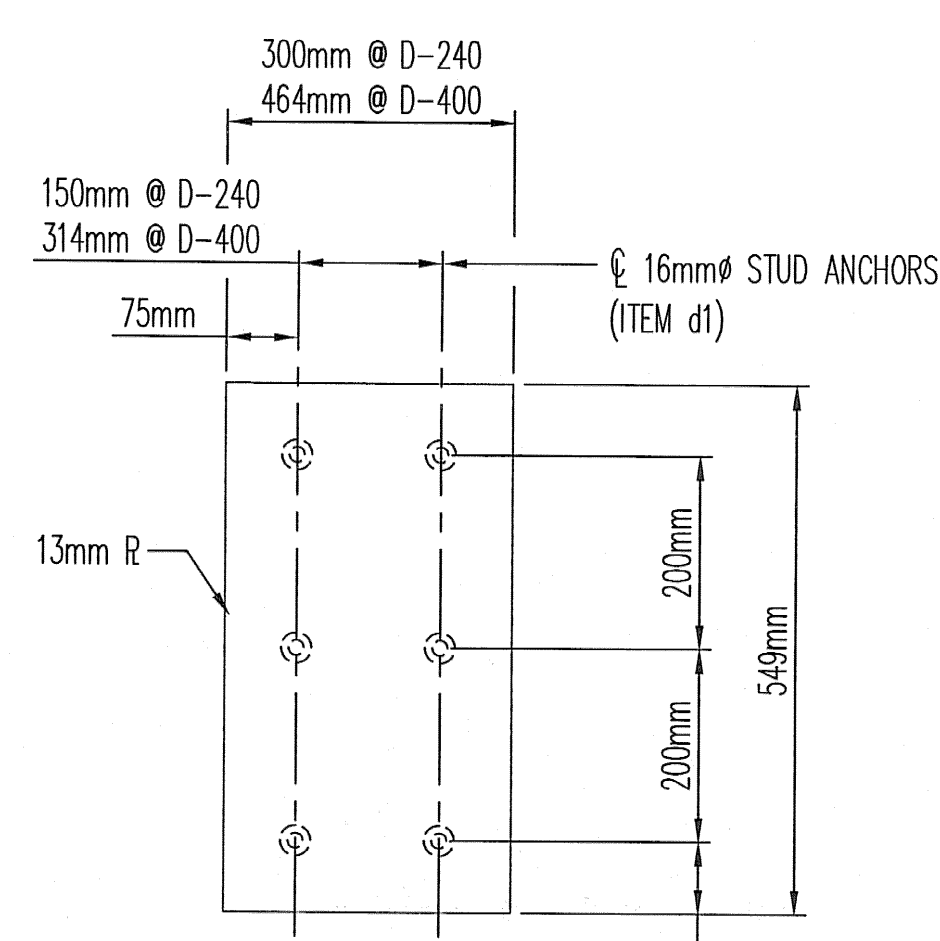


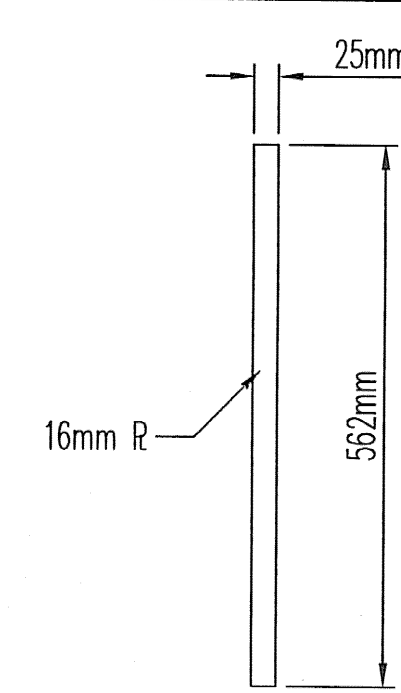
ITEM NO. c2 (4) REQ'D. D-240  
ITEM NO. c10 (4) REQ'D. D-400  
BACK RH COVER PLATE



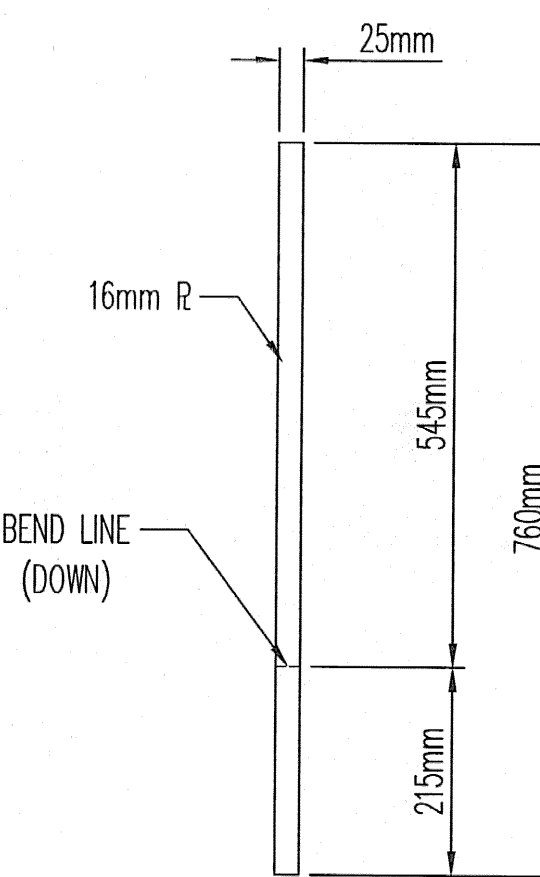
ITEM NO. c4 (8) REQ'D.  
TYPICAL BACK ANCHOR PLATE



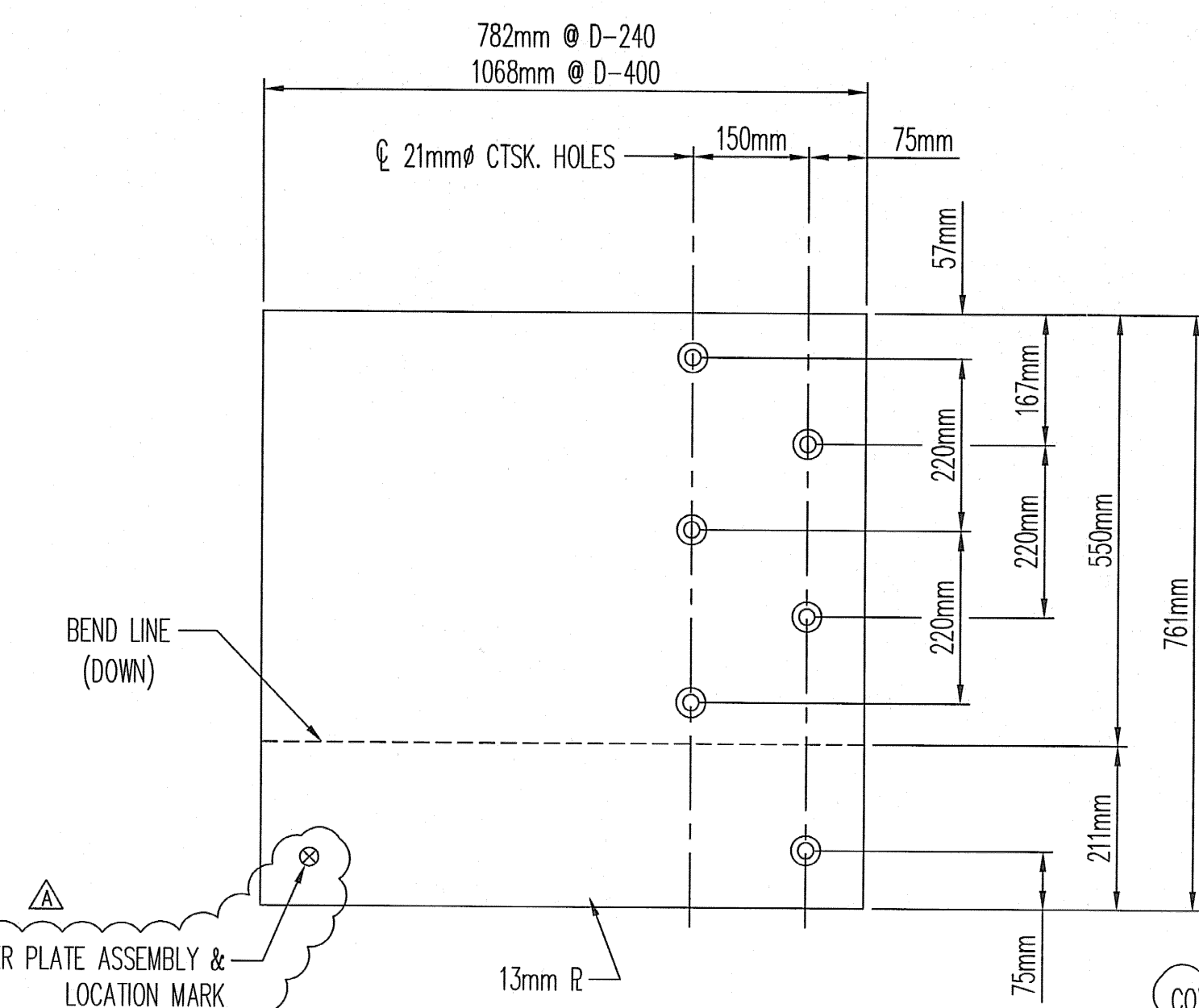
ITEM NO. c6 (4) REQ'D. D-240  
ITEM NO. c12 (4) REQ'D. D-400  
BACK RH SLIDE PLATE



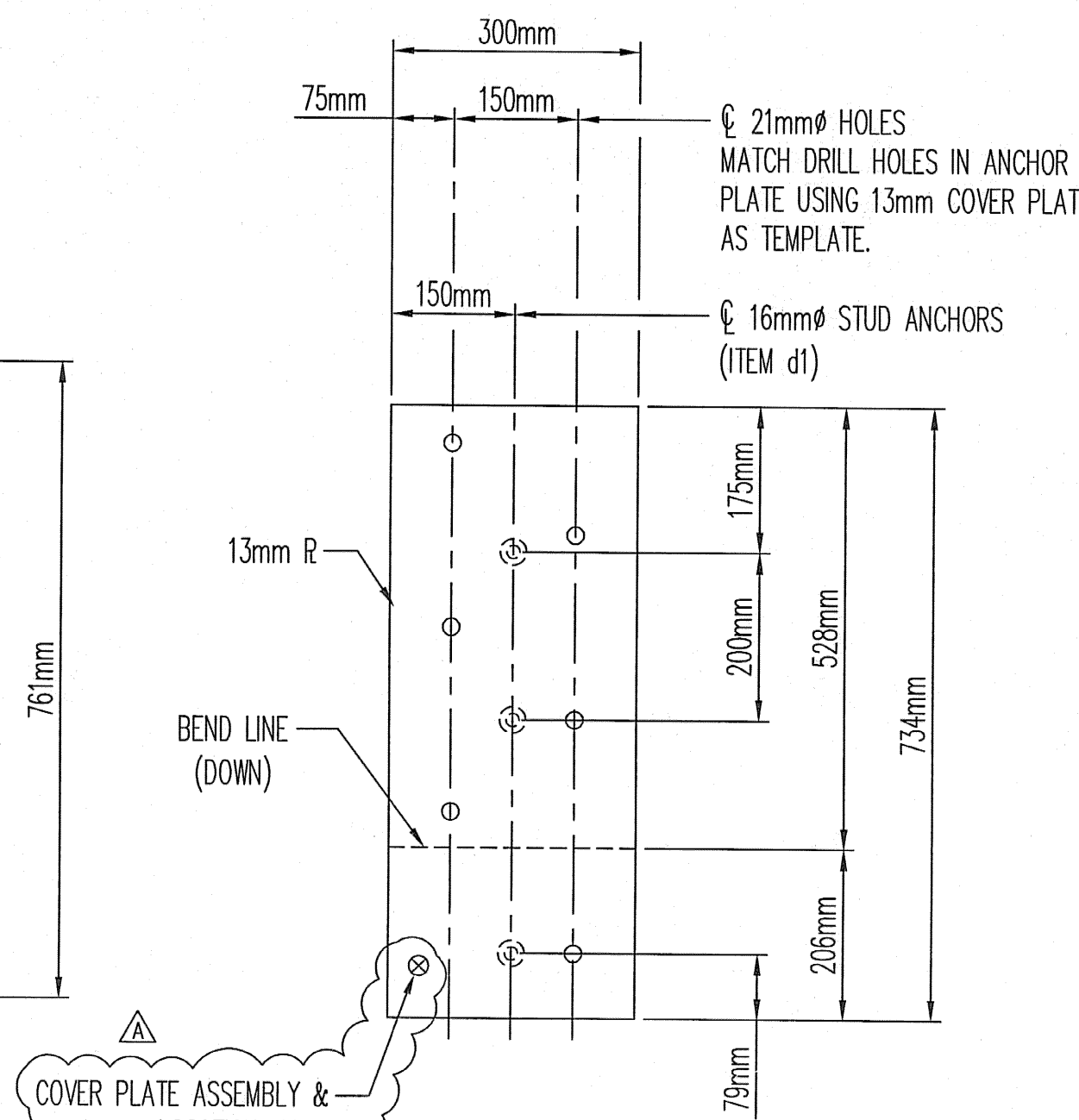
ITEM NO. c8 (8) REQ'D.  
TYPICAL BACK BUTT PLATE



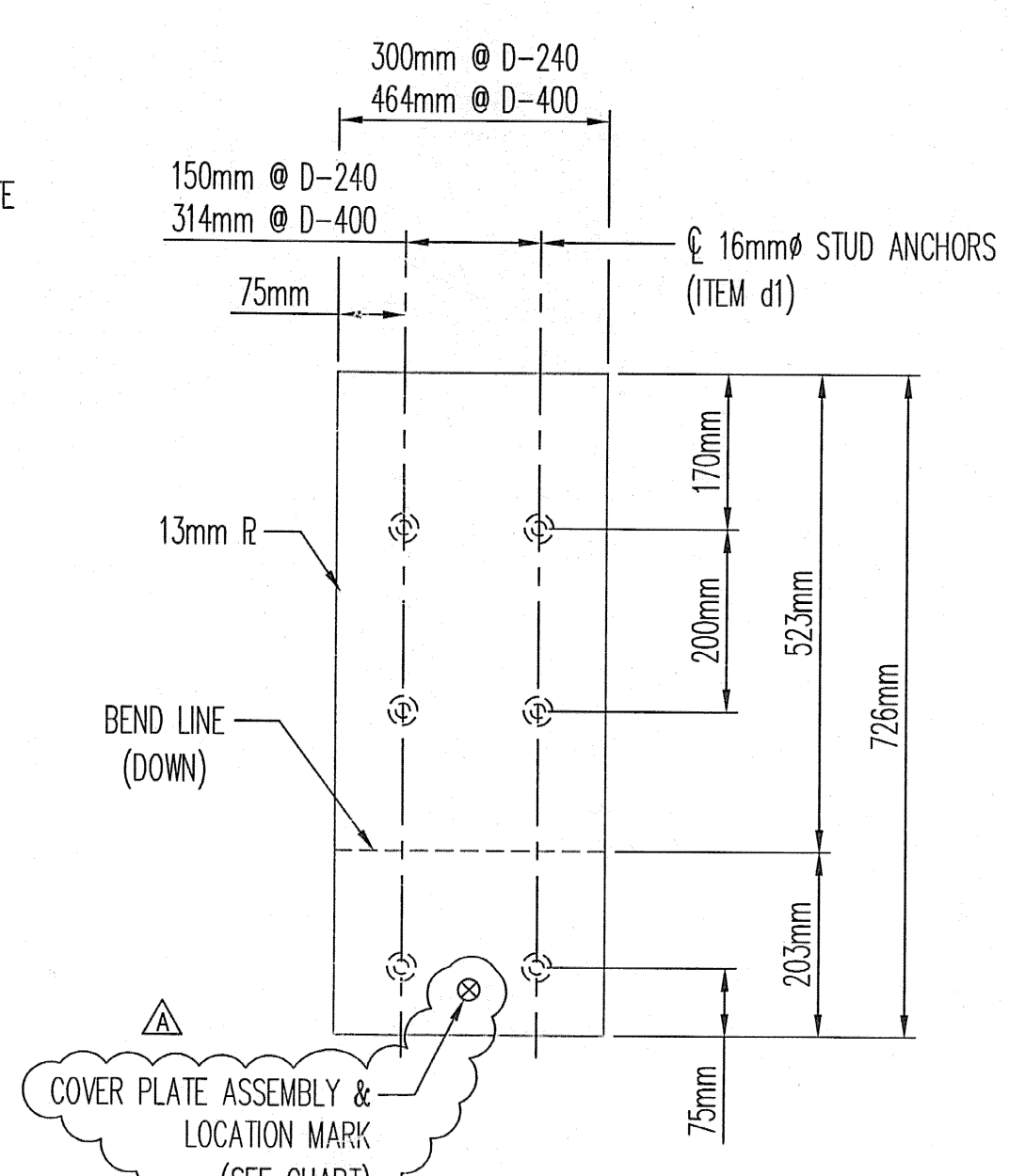
ITEM NO. c7 (8) REQ'D.  
TYPICAL FRONT BUTT PLATE



ITEM NO. c1 (4) REQ'D. D-240  
ITEM NO. c9 (4) REQ'D. D-400  
FRONT RH COVER PLATE



ITEM NO. c3 (8) REQ'D.  
TYPICAL FRONT ANCHOR PLATE



ITEM NO. c5 (4) REQ'D. D-240  
ITEM NO. c11 (4) REQ'D. D-400  
FRONT RH SLIDE PLATE

COVER PLATE NOTES

ALL PLATES SHALL BE AASHTO M270 GRADE 345 (ASTM-A572) STEEL AND GALVANIZED IN ACCORDANCE WITH AASHTO M111 (ASTM-A123). (AFTER FABRICATION) RADIUS ALL EDGES 2mm FOR GALVANIZING.

COVER PLATES SHALL BE ATTACHED USING 19mm X 51mm FLATHEAD CTSK. CAP SCREWS WITH HEX NUTS TACK WELDED TO BOTTOM OF ANCHOR PLATES.

PLASTIC CAPS SHALL BE UTILIZED ON BACK OF NUTS TO PREVENT CONCRETE FROM ENTERING THREADS.

SLIDE AND ANCHOR PLATE ASSEMBLIES SHALL BE ANCHORED USING 16mm X 102mm LONG STUD ANCHORS. AUTOMATICALLY END WELDED TO PLATES AND HOT-DIPPED GALVANIZED WITH PLATES AFTER FABRICATION.

COVER PLATES SHALL BE MOUNTED TOWARDS ONCOMING TRAFFIC (SEE PLAN VIEW ON SHEET 14 OF 15).

MK	QTY.	DESCRIPTION	MATERIAL	LENGTH	REMARKS	PART NO.
1RH	4	D-240 RH COVER PLATE ASSEMBLY	A572	922	HDG	
c1	4	PL 13 X 761	A572	782	FRONT COVER PLATE	19-55
c2	4	PL 13 X 565	A572	782	BACK COVER PLATE	19-55
c3	4	PL 13 X 300	A572	734	FRONT ANCHOR PLATE	19-55
c4	4	PL 13 X 300	A572	552	BACK ANCHOR PLATE	19-55
c5	4	PL 13 X 300	A572	726	FRONT SLIDE PLATE	19-55
c6	4	PL 13 X 300	A572	549	BACK SLIDE PLATE	19-55
c7	4	PL 16 X 25	A572	760	FRONT BUTT PLATE	19-57
c8	4	PL 16 X 25	A572	562	BACK BUTT PLATE	19-57
d1	72	WS 16 X 106	A108			29-9
d2	44	HN 19	A563A MG			25-59
D3	46	MB 19 X 51 SOKT FH CTSK	SS304/SS316		(44)	24-172
D4	46	MI 19 PLASTIC END CAP			(44) MCMASTER CARR # 9567K14	31-141
2RH	4	D-400 RH COVER PLATE ASSEMBLY	A572	1293	HDG	
c9	4	PL 13 X 761	A572	1068	FRONT COVER PLATE	19-55
c10	4	PL 13 X 565	A572	1068	BACK COVER PLATE	19-55
c3	4	PL 13 X 300	A572	734	FRONT ANCHOR PLATE	19-55
c4	4	PL 13 X 300	A572	552	BACK ANCHOR PLATE	19-55
c11	4	PL 13 X 464	A572	726	FRONT SLIDE PLATE	19-55
c12	4	PL 13 X 464	A572	549	BACK SLIDE PLATE	19-55
c7	4	PL 16 X 25	A572	760	FRONT BUTT PLATE	19-57
c8	4	PL 16 X 25	A572	562	BACK BUTT PLATE	19-57
d1	72	WS 16 X 106	A108			29-9
d2	44	HN 19	A563A MG			25-59
D3	46	MB 19 X 51 SOKT FH CTSK	SS304/SS316		(44)	24-172
D4	46	MI 19 PLASTIC END CAP			(44) MCMASTER CARR # 9567K14	31-141

NOTE: ALL MATERIALS SPECIFICATION DESCRIPTIONS ARE ASTM, UNLESS OTHERWISE NOTED.

MK	QTY.	DESCRIPTION	MATERIAL	LENGTH	REMARKS	PART NO.
		ENGLISH B.O.M. (REF. ONLY)				
1RH	4	D-240 RH COVER PLATE ASSEMBLY	A572	3'-0 5/16	HDG	
c1	4	PL 1/2 X 29 15/16	A572	2'-6 13/16	FRONT COVER PLATE	19-55
c2	4	PL 1/2 X 22 1/4	A572	2'-6 13/16	BACK COVER PLATE	19-55
c3	4	PL 1/2 X 11 13/16	A572	2'-4 7/8	FRONT ANCHOR PLATE	19-55
c4	4	PL 1/2 X 11 13/16	A572	1'-9 3/4	BACK ANCHOR PLATE	19-55
c5	4	PL 1/2 X 11 13/16	A572	2'-4 9/16	FRONT SLIDE PLATE	19-55
c6	4	PL 1/2 X 11 13/16	A572	1'-9 5/8	BACK SLIDE PLATE	19-55
c7	4	PL 5/8 X 1	A572	2'-5 15/16	FRONT BUTT PLATE	19-57
c8	4	PL 5/8 X 1	A572	1'-10 1/8	BACK BUTT PLATE	19-57
d1	72	WS 5/8 X 4 3/16	A108			29-9
d2	44	HN 3/4	A563A MG			25-59
D3	46	MB 3/4 X 2 SOKT FH CTSK	SS304/SS316		(44)	24-172
D4	46	MI 3/4 PLASTIC END CAP			(44) MCMASTER CARR # 9567K14	31-141
2RH	4	D-400 RH COVER PLATE ASSEMBLY	A572	4'-2 7/8	HDG	
c9	4	PL 1/2 X 29 15/16	A572	3'-6 1/16	FRONT COVER PLATE	19-55
c10	4	PL 1/2 X 22 1/4	A572	3'-6 1/16	BACK COVER PLATE	19-55
c3	4	PL 1/2 X 11 13/16	A572	2'-4 7/8	FRONT ANCHOR PLATE	19-55
c4	4	PL 1/2 X 11 13/16	A572	1'-9 3/4	BACK ANCHOR PLATE	19-55
c11	4	PL 1/2 X 18 1/4	A572	2'-4 9/16	FRONT SLIDE PLATE	19-55
c12	4	PL 1/2 X 18 1/4	A572	1'-9 5/8	BACK SLIDE PLATE	19-55
c7	4	PL 5/8 X 1	A572	2'-5 15/16	FRONT BUTT PLATE	19-57
c8	4	PL 5/8 X 1	A572	1'-10 1/8	BACK BUTT PLATE	19-57
d1	72	WS 5/8 X 4 3/16	A108			29-9
d2	44	HN 3/4	A563A MG			25-59
D3	46	MB 3/4 X 2 SOKT FH CTSK	SS304/SS316		(44)	24-172
D4	46	MI 3/4 PLASTIC END CAP			(44) MCMASTER CARR # 9567K14	31-141

NOTE: ALL MATERIALS SPECIFICATION DESCRIPTIONS ARE ASTM, UNLESS OTHERWISE NOTED.

ITEM GROUP	LOCATION	QTY.
c1 & c2	ABUT. 1	2
c1 & c2	ABUT. 2	2
c9 & c10	PIER 7	2
c9 & c10	PIER 15	2

ITEM GROUP	LOCATION	QTY.
c3 & c4	ABUT. 1	2
c3 & c4	ABUT. 2	2
c3 & c4	PIER 7	2
c3 & c4	PIER 15	2

ITEM GROUP	LOCATION	QTY.
c5, c6, c7, c8	ABUT. 1	2
c5, c6, c7, c8	ABUT. 2	2
c11, c12, c7, c8	PIER 7	2
c11, c12, c7, c8	PIER 15	2

**SHOP DRAWING REVIEW**

REVIEWED AS REQUIRED BY THE CONSTRUCTION CONTRACT DOCUMENTS AND APPROVED, BUT ONLY FOR CONFORMANCE TO THE DESIGN CONCEPT OF THE WORK, AND SUBJECT TO FURTHER LIMITATIONS AND REQUIREMENTS CONTAINED IN THE CONSTRUCTION CONTRACT DOCUMENTS.

REJECTED  REVISE AND RESUBMIT  FURNISH AS CORRECTED

CORRECTIONS OR COMMENTS MADE ON THE SHOP DRAWINGS DURING THIS REVIEW DO NOT RELIEVE CONTRACTOR FROM COMPLIANCE WITH REQUIREMENTS OF THE DRAWINGS AND SPECIFICATIONS. THIS CHECK IS ONLY FOR REVIEW OF GENERAL CONFORMANCE WITH THE DESIGN CONCEPT OF THE PROJECT AND GENERAL COMPLIANCE WITH THE INFORMATION GIVEN IN THE CONTRACT DOCUMENTS. THE CONTRACTOR IS RESPONSIBLE FOR: CONFIRMING AND CORRELATING ALL QUANTITIES AND DIMENSIONS; SELECTING FABRICATION PROCESSES AND TECHNIQUES OF CONSTRUCTION; COORDINATING HIS WORK WITH THAT OF ALL OTHER TRADES; AND PERFORMING HIS WORK IN A SAFE AND SATISFACTORY MANNER.

VHB Vanasse Hangen Brustlin, Inc. Engineers, Planners, and Scientists  
60 Bedford Farms, Kilton Rd.  
Bedford, NH 03110 603.644.0888

Job Number: 50911  
Reviewed By: SMH  
Date: 6/1/06

**D.S. BROWN**

300 E. CHERRY STREET  
NORTH BALTIMORE, OHIO 45872  
419.257.3561  
FAX: 419.257.0332

4201 NOREX DRIVE  
CHASKA, MINNESOTA 55318  
952.368.3000  
FAX: 952.448.7000  
DSBROWN.COM

REVISION	DESCRIPTION	DATE	RES.	CHKD.
A	ADDED ASSEMBLY MARK NOTE & CHART; MODIFIED COVER PLATE NOTE & ITEMS IN TITLE BLOCK	04/02/06	RES.	JLW

LOCATION	ITEM	QUANTITY
BRIDGE - 2	-	-
PROJECT NO. - BRF 036-1 (1)	-	-
TOWN - ALBURG AND SWANTON	-	-
P.O. NO. - P078559 MIS	-	-
SUPERVISOR - MARK KACZINSKI	-	-
CUSTOMER - CIAMBRO CORPORATION	-	-

SCALE	DRAWN BY	CHECKED BY	DATE	BRIDGE SHEET
N.T.S.	RES	JLW	03-09-05	15 OF 15
PROJECT NUMBER	PRODUCT CODE	RELEASE	SHEET	
12244	1021	1	15	