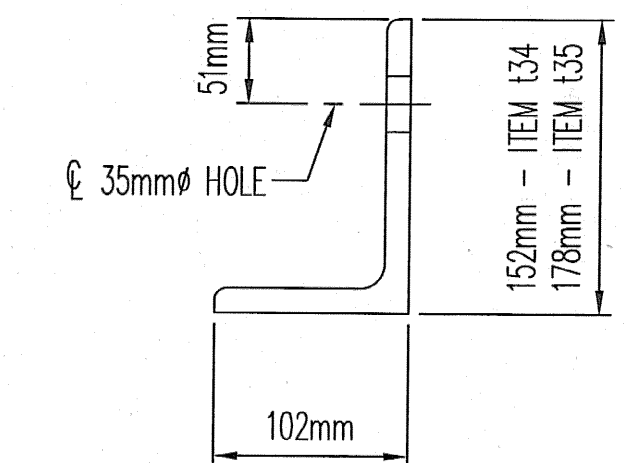


"D-240" OPERATING DIMENSIONS "W"

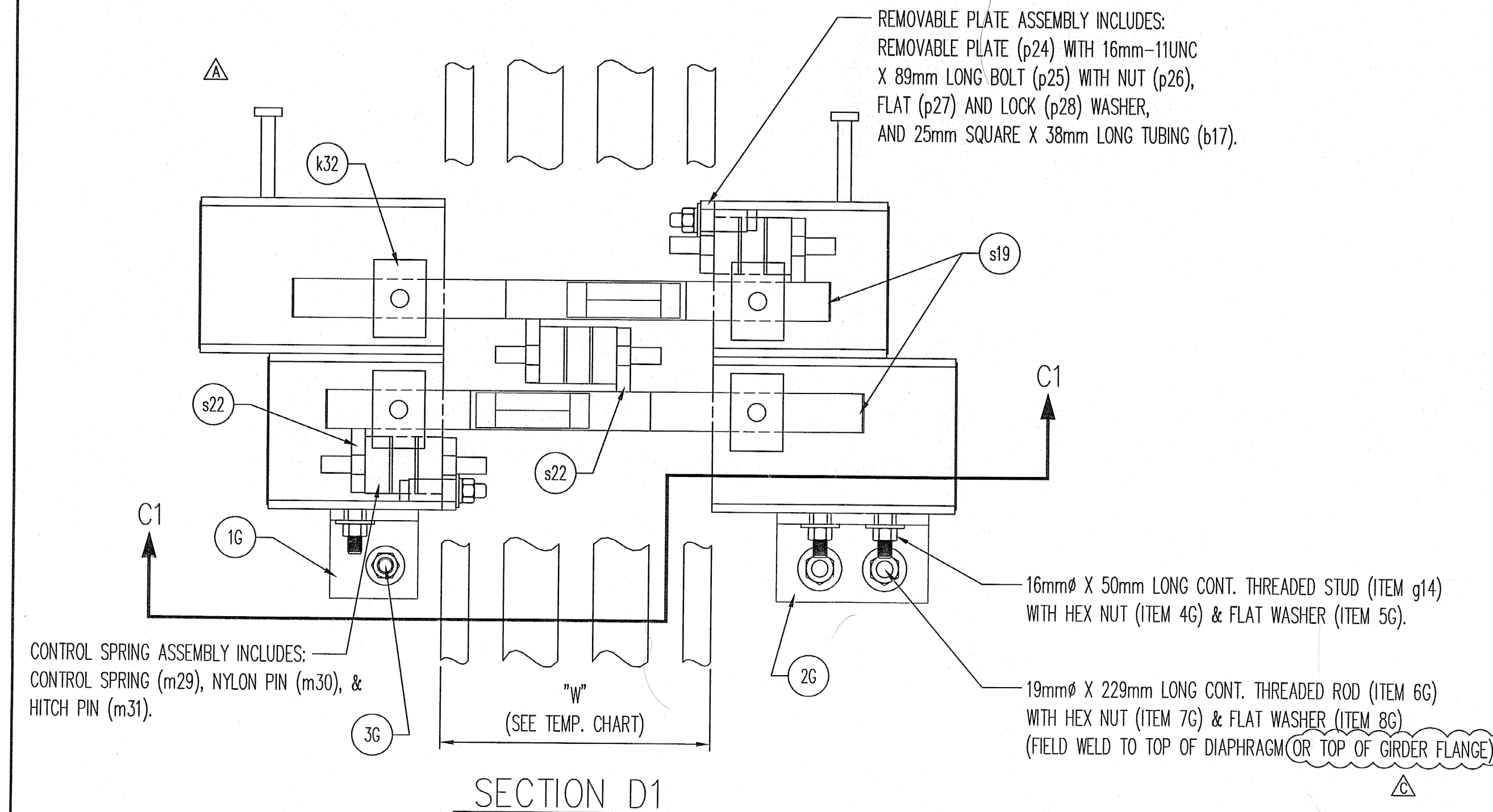
STRUCT. TEMP.	ABUTMENT NO. 1	ABUTMENT NO. 2
MAX.	191mm	191mm
32°C	263mm	256mm
27°C	272mm	267mm
22°C	282mm	278mm
17°C	292mm	289mm
12°C	301mm	300mm
7°C MID.	311mm	311mm
2°C	321mm	322mm
-3°C	330mm	333mm
-8°C	340mm	344mm
-13°C	350mm	355mm
-18°C	360mm	367mm
MIN.	431mm	431mm

TEMPERATURE ADJUSTMENT CHART

THERMAL MOVEMENT @ ABUT. 1 = 9.7mm / 5°C  
THERMAL MOVEMENT @ ABUT. 2 = 11.1mm / 5°C



TEMPERATURE ADJUSTMENT ANGLE DETAIL



INSTALLATION PROCEDURES

- 1) FIELD ENGINEER SHALL DETERMINE JOINT OPENING ON DAY OF INSTALLATION.
- 2) PLACE JOINT IN BLOCKOUT AND PROPERLY ALIGN BOTH HORIZONTALLY AND VERTICALLY. (JOINT MUST FOLLOW ROADWAY GRADE.)
- 3) MODIFY REBAR (AS DIRECTED BY THE ENGINEER) TO RECEIVE MODULAR EXPANSION JOINT.
- 4) TIGHTEN ALL EXPANSION JOINT SUPPORT CONNECTIONS. FIELD WELD THREADED RODS TO TOP OF DIAPHRAGMS (OR TOP OF GIRDER FLANGE).
- 5) AFTER JOINT IS SECURED, REMOVE TEMPORARY ADJUSTMENT DEVICES AS DIRECTED.
- 6) CONTRACTOR TO PLACE FORMWORK SO THAT NO CONCRETE FLOWS INTO BOXES AND JOINT GAP OPENINGS.
- 7) POUR AND VIBRATE CONCRETE INTO BLOCKOUT TO ENSURE PROPER CONSOLIDATION AROUND ALL EMBEDDED COMPONENTS. REMOVE FORMWORK AFTER CURE TIME, AS DETERMINED BY FIELD ENGINEER.

**SHOP DRAWING REVIEW**

REVIEWED AS REQUIRED BY THE CONSTRUCTION CONTRACT DOCUMENTS AND APPROVED, BUT ONLY FOR CONFORMANCE TO THE DESIGN CONCEPT OF THE WORK, AND SUBJECT TO FURTHER LIMITATIONS AND REQUIREMENTS CONTAINED IN THE CONSTRUCTION CONTRACT DOCUMENTS.

REJECTED  REVISE AND RESUBMIT  FURNISH AS CORRECTED

CORRECTIONS OR COMMENTS MADE ON THE SHOP DRAWINGS DURING THIS REVIEW DO NOT RELIEVE CONTRACTOR FROM COMPLIANCE WITH REQUIREMENTS OF THE DRAWINGS AND SPECIFICATIONS. THIS CHECK IS ONLY FOR REVIEW OF GENERAL CONFORMANCE WITH THE DESIGN CONCEPT OF THE PROJECT AND GENERAL COMPLIANCE WITH THE INFORMATION GIVEN IN THE CONTRACT DOCUMENTS. THE CONTRACTOR IS RESPONSIBLE FOR: CONFIRMING AND CORRELATING ALL QUANTITIES AND DIMENSIONS; SELECTING FABRICATION PROCESSES AND TECHNIQUES OF CONSTRUCTION; COORDINATING HIS WORK WITH THAT OF ALL OTHER TRADES; AND PERFORMING HIS WORK IN A SAFE AND SATISFACTORY MANNER.

VHB Vanasse Hangen Brustlin, Inc. Job Number: 50911  
Engineers, Planners, and Scientists Reviewed By: SAH  
Six Bedford Farms, Kilton Rd. Dated: 6/1/06  
Bedford, NH 03119 603 844 0886

**D.S. BROWN**

300 E. CHERRY STREET  
NORTH BALTIMORE, OHIO 45872  
419.257.3561  
FAX: 419.257.0332

4201 NOREX DRIVE  
CHASKA, MINNESOTA 55318  
952.368.3000  
FAX: 952.448.7000  
DSBROWN.COM

REMOVED NOTE IN SECTION C1; MODIFIED INSTALL. NOTES, TEMP. ADJ. DETAIL, & ITEMS IN TITLE BLOCK	04/02/06	RES	JLW
ADDED BENT STUD ANCHORS ABOVE SUPPORT BOXES; REMOVED NOTE	01/19/06	RES	JLW
LOWERED SUPPORT BOXES ON EDGE BEAMS; MODIFIED SUPPORT BARS	10/24/05	RES	JLW
REV. DESCRIPTION	DATE	DET.	CHKD.
LOCATION — VT 78 OVER MISSISQUOI BAY	ITEM	QUANTITY	
BRIDGE — 2			
PROJECT NO. — BR 036-1 (1)			
TOWN — ALBURG AND SWANTON			
P.O. NO. — P078559 MIS			
SUPERVISOR — MARK KACZINSKI			
CUSTOMER — CIAMBRO CORPORATION			
DESCRIPTION: "D-240" SECTIONS & STANDARD DETAILS	SCALE: N.T.S.	DRAWN BY: RES	CHECKED BY: JLW
COUNTIES OF GRAND ISLE AND FRANKLIN, VERMONT	PROJECT NUMBER: 12244	PRODUCT CODE: 1021	DATE: 03-10-05
			BRIDGE SHEET: 3 OF 15
			RELEASE: 1
			SHEET: 3