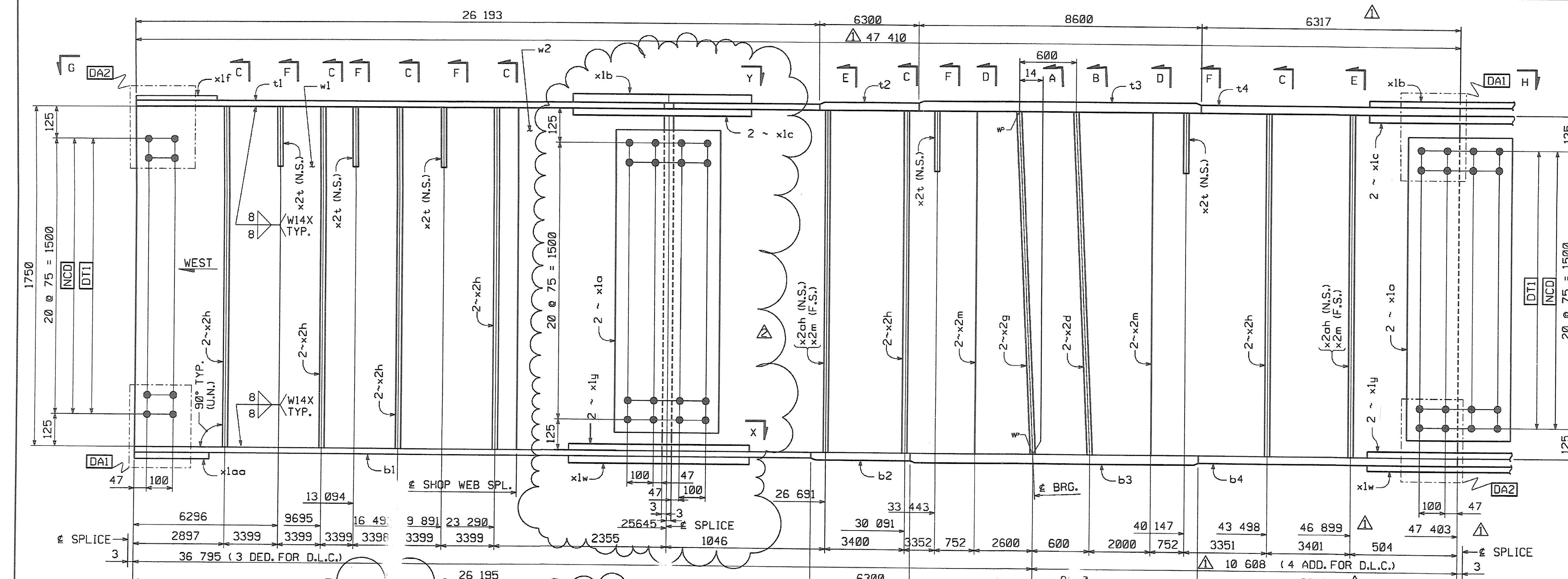


METRIC

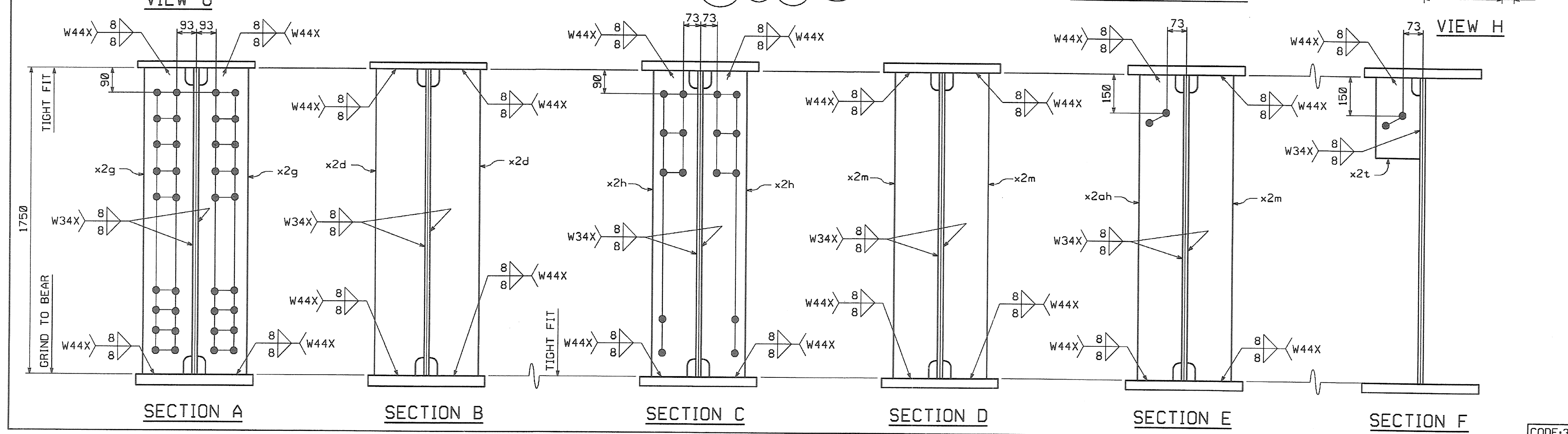
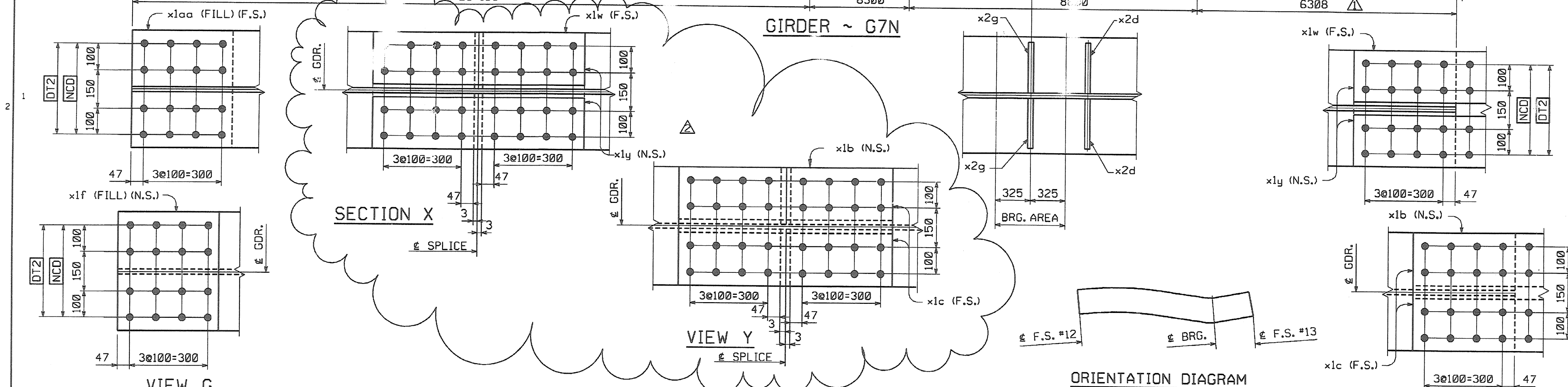
1. ALL DIMENSIONS ARE IN MILLIMETERS UNLESS OTHERWISE NOTED.
2. ALL WEIGHTS ARE IN KILOGRAMS.

FED. ROAD DIST. NO.	STATE	FED. AID PROJ. NO.
	VT	



BILL OF MATERIAL						
NO.	MARK	DESCRIPTION	LENGTH	REMARKS	GRP. ITEM	SHIP. WT. KG. EA.
ONE	G7N	GIRDER				22 920
1	w1	PL 16 x 1750	23 808	(T)	3 4	5232.40
1	w2	PL 16 x 1750	23 699	(T) 47 400	3 7	5408.66
1	t1	PL 22 x 450	26 193	(T) 26 193	4 20	2035.38
1	t2	PL 32 x 450	6 300	(T)	4 15	742.07
1	t3	PL 65 x 450	8 600	(T)	4 3	1974.44
1	t4	PL 32 x 450	6 317	(T)	4 14	749.99
1	b1	PL 22 x 450	26 195	(T) 26 195	4 20	2035.64
1	b2	PL 32 x 450	6 300	(T)	4 15	742.07
1	b3	PL 65 x 450	8 600	(T)	4 3	1974.44
1	b4	PL 32 x 450	6 308	(T)	4 14	742.97
4	x1a	PL 12 x 1600	400	(T)	6 1	60.28
2	x1b	PL 14 x 450	790	(T)	6 6	39.06
4	x1c	PL 16 x 200	790	(T)	6 5	49.84
1	x1f	PL 10 x 450	392	FILL	6 7	13.85
2	x1w	PL 14 x 450	790	(T)	6 6	39.06
4	x1y	PL 16 x 200	790	(T)	6 5	49.84
1	x1aa	PL 10 x 450	392	FILL	6 7	13.85
2	x2d	PL 38 x 200	1 750		7 1	104.39
2	x2g	PL 38 x 200	1 750		7 1	104.39
12	x2h	PL 12 x 180	1 750		7 4	29.67
6	x2m	PL 12 x 180	1 750		7 4	29.67
5	x2t	PL 14 x 180	310		7 3	64.3
2	x2ah	PL 12 x 180	1 750		7 4	29.67
TOTAL WEIGHT THIS SHEET:						22 917.36 kgs

0.6mm Substituted For Field Splice
22 915.44 kg
JMR 8-3-06



SHOP DRAWING REVIEW

REVIEWED AS REQUIRED BY THE CONSTRUCTION CONTRACT DOCUMENTS AND APPROVED, BUT ONLY FOR CONFORMANCE TO THE DESIGN CONCEPT OF THE WORK, AND SUBJECT TO FURTHER LIMITATIONS AND REQUIREMENTS CONTAINED IN THE CONSTRUCTION CONTRACT DOCUMENTS.

REJECTED REVISE AND RESUBMIT FURNISH AS CORRECTED

CORRECTIONS OR COMMENTS MADE ON THE SHOP DRAWINGS DURING THIS REVIEW DO NOT RELIEVE CONTRACTOR FROM COMPLIANCE WITH REQUIREMENTS OF THE DRAWINGS AND SPECIFICATIONS. THIS CHECK IS ONLY FOR REVIEW OF GENERAL CONFORMANCE WITH THE DESIGN CONCEPT OF THE PROJECT AND GENERAL COMPLIANCE WITH THE INFORMATION GIVEN IN THE CONTRACT DOCUMENTS. THE CONTRACTOR IS RESPONSIBLE FOR OBTAINING AND CORRELATING ALL QUANTITIES AND DIMENSIONS; SELECTING FABRICATION PROCESSES AND TECHNIQUES OF CONSTRUCTION; COORDINATING HIS WORK WITH THAT OF ALL OTHER TRADES; AND PERFORMING HIS WORK IN A SAFE AND SATISFACTORY MANNER.

VHB Vanessa Hengen Bradin, Inc.
Engineers, Planners, and Scientists
Six Bedford Farms, Kilton Rd.
Bedford, NH 03110 603 844 0038

Job Number: 52211
Reviewed By: SMH
Date: 10/25/05

SHOP NOTE

HOLES: 1/16" ø

BOLTS: NONE

PAINT: NONE

FOR GENERAL SHOP NOTES, SEE DWG. GNI.

FOR WEB CAMBER DIAGRAM, SEE DWG. WC3.

△	ADDED FIELD SPLICE	DRJ	8/5/05
△	INCREASE LENGTHS TO SATISFY REQUIREMENTS FOR LENGTH & MEAN TEMPERATURE OF 45°F.	JSA	9/17/04
NO.	REVISION	BY	DATE
<p>HIGH STEEL STRUCTURES, INC.</p> <p>1770 Hempstead Road Lancaster, PA 17605-0008 Phone 717/299-5211</p> <p>A Division of High Industries, Inc.</p>			
GIRDER G7N			
VT 78 OVER MISSISSOQUI BAY, BRIDGE NO. 2			
VT 78 STA.10+970.425 TO STA.12+059.775			
TOWNS OF ALBURG AND SWANTON			
COUNTIES OF GRAND ISLE AND FRANKLIN			
STATE OF VERMONT, AGENCY OF TRANSPORTATION			
STATE CONTRACT OR REF. NO. BRF-036-1(1)			
CONTRACTOR CIAMBRO CORPORATION			
IN CHARGE: GLIDDEN (IH) MADE BY: ERS CHK'D. BY: CS DATE: 8-23-04			
CONTRACT NUMBER: VT-04057-2 DRAWING NUMBER: 55 OF 112			