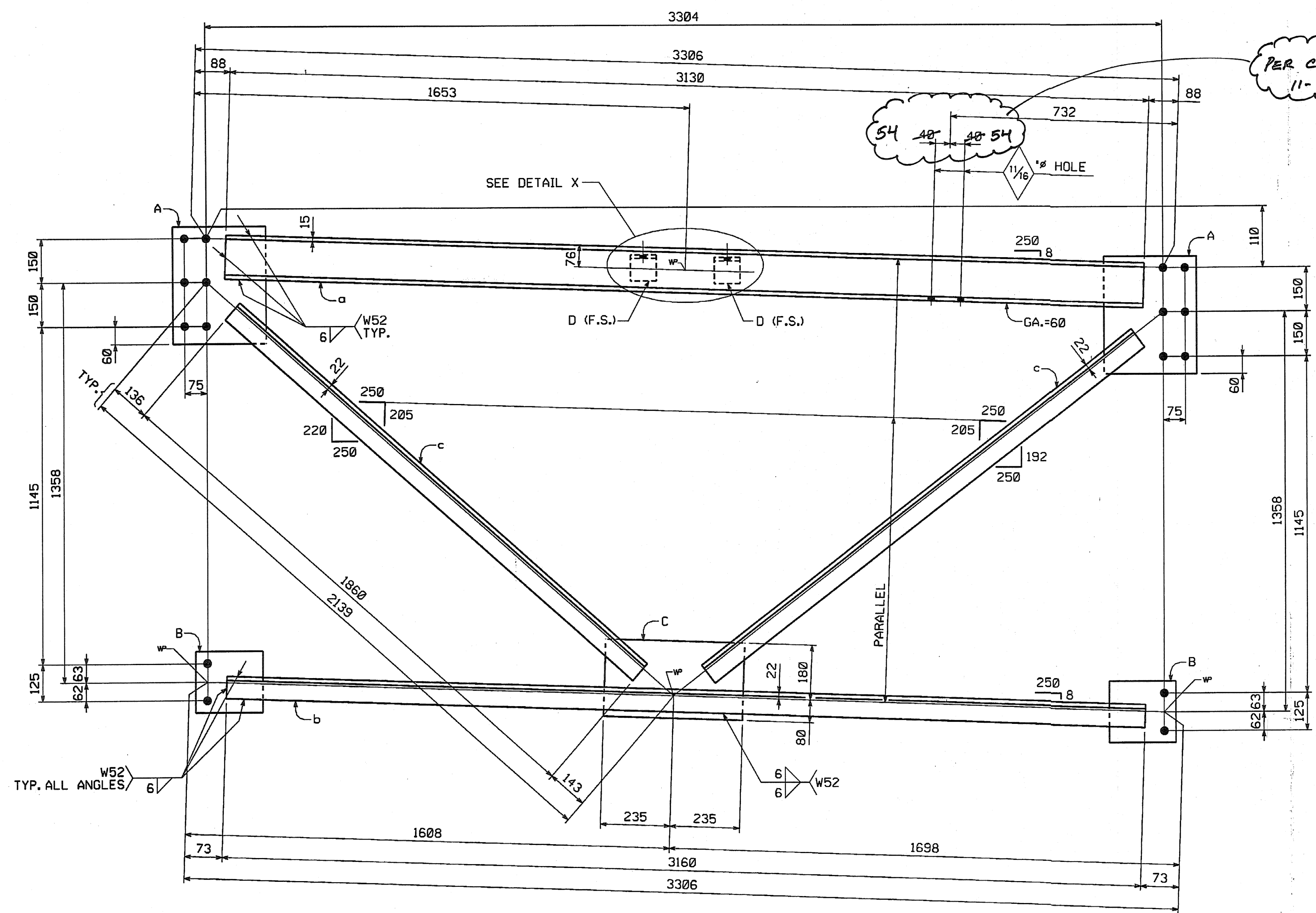


METRIC

METRIC 1. ALL DIMENSIONS ARE IN MILLIMETERS UNLESS OTHERWISE NOTED.  
2. ALL WEIGHTS ARE IN KILOGRAMS.

FED. ROAD DIV. NO.	STATE	FED. AID PROJ. NO.
	VT	

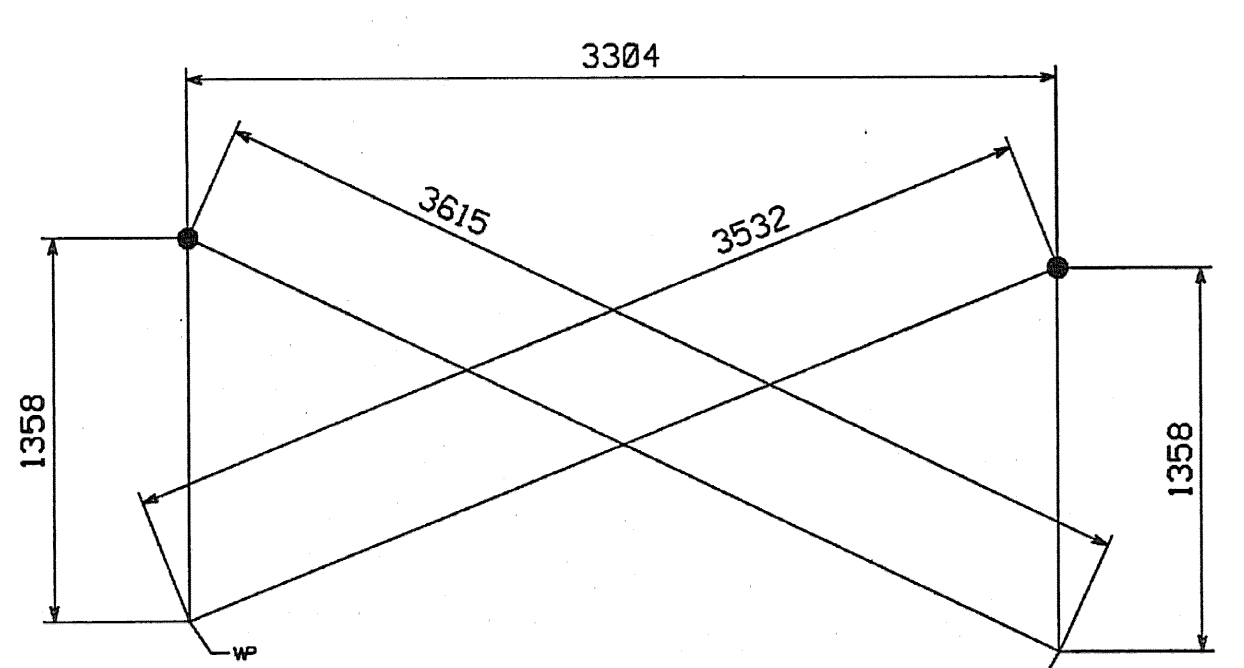
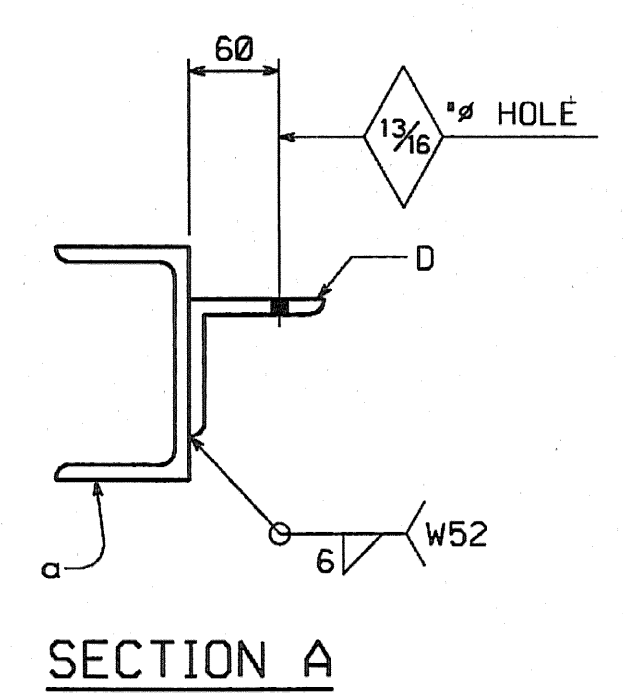
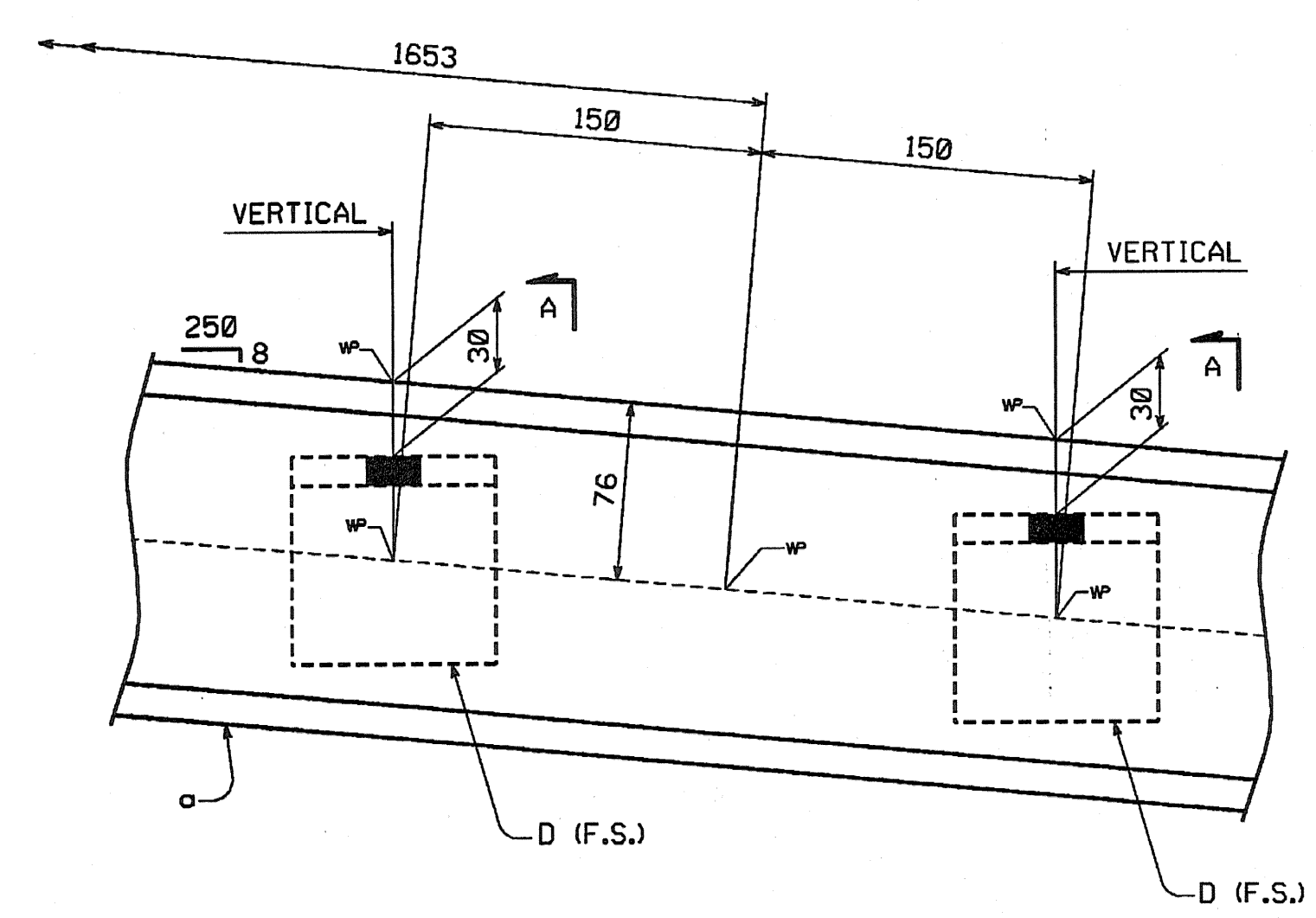


SHIPMENT			BILL OF MATERIAL							
1	2	3	NO.	MARK	DESCRIPTION	LENGTH	REMARKS	GRP.	ITEM	SHIP. WT. KG. EA.
-	-	2	2	CF13	CROSSFRAMES					200.82
			2	a	MC150 x 26.8	3 130	(MC6 x 18)	11	2	83.88
			2	b	L76 x 76 x 7.9	3 160	(L3 x 3 x 5/16)	11	7	28.41
			4	c	L76 x 76 x 7.9	1 860	(L3 x 3 x 5/16)	11	7	16.72
			4	m1h	PL 14 x 330	400		11	9	14.51
			4	m1k	PL 14 x 205	230		11	9	5.18
			2	m1m	PL 14 x 260	470		11	9	13.43
			4	m1w	L89 x 89 x 9.5	90	(L3 1/2 x 3 1/2 x 3/8)	11	6	1.14
42	48	46	136	CF14	CROSSFRAMES					200.82
			136	a	MC150 x 26.8	3 130	(MC6 x 18)	11	2	83.88
			136	b	L76 x 76 x 7.9	3 160	(L3 x 3 x 5/16)	11	7	28.41
			272	c	L76 x 76 x 7.9	1 860	(L3 x 3 x 5/16)	11	7	16.72
			272	m1n	PL 14 x 330	400		11	9	14.51
			272	m1p	PL 14 x 205	230		11	9	5.18
			136	m1s	PL 14 x 260	470		11	9	13.43
			272	m1t	L89 x 89 x 9.5	90	(L3 1/2 x 3 1/2 x 3/8)	11	6	1.14
TOTAL WEIGHT THIS SHEET:							27 713.16	✓	kg	

SHIP. 1 WT~8434.44 kgs Unit #1 42 ✓  
SHIP. 2 WT~9639.36 kgs Unit #2 48 ✓  
SHIP. 3 WT~9639.36 kgs Unit #3 46 ✓  
TSHL 133

INTERMEDIATE CROSSFRAMES

MARK	A	B	C	D	REMARKS
CF13	m1h	m1k	m1m	m1w	PAINT
CF14	m1n	m1p	m1s	m1t	NO PAINT



CHECK DIMENSIONS

SHOP NOTE

HOLES: 1 5/16" (U.N.)  
BOLTS: NONE  
PAINT: SEE DWG. GNI  
FOR GENERAL SHOP NOTES, SEE DWG. GNI.

**SHOP DRAWING REVIEW**

REVIEWED AS REQUIRED BY THE CONSTRUCTION CONTRACT DOCUMENTS AND APPROVED, BUT ONLY FOR CONFORMANCE TO THE DESIGN CONCEPT OF THE WORK, AND SUBJECT TO FURTHER LIMITATIONS AND REQUIREMENTS COVERED IN THE CONSTRUCTION CONTRACT DOCUMENTS.

REJECTED  REVISE AND RESUBMIT  REVISION AS ORDERED

CORRECTIONS OR COMMENTS MADE ON THE SHOP DRAWINGS DURING THIS REVIEW DO NOT RELIEVE CONTRACTOR FROM COMPLIANCE WITH REQUIREMENTS OF THE DRAWINGS AND SPECIFICATIONS. THIS CHECK IS ONLY FOR REVIEW OF MATERIAL COMPLIANCE WITH THE DESIGN CONCEPT OF THE PROJECT AND DOES NOT CONSTITUTE A REVIEW OF THE TECHNICAL PERFORMANCE IN THE CONTRACT DOCUMENTS. THE CONTRACTOR IS RESPONSIBLE FOR OBTAINING AND CORRELATING ALL QUANTITIES AND DIMENSIONS, SELECTION, FABRICATION PROCESSES AND TECHNIQUES OF CONSTRUCTION OCCURRING IN HIS SHOP WITH THAT OF ALL OTHER TRADES AND PERFORMING HIS WORK IN A SAFE AND SATISFACTORY MANNER.

**VHDP** Vanessa Hanger Drustlin, Inc.  
Engineers, Planners, and Scientists  
Six Bedona Farms, Kilton Rd.  
Bedford, MA 01830 508-534-0099

Job Number: 50911  
Reviewed By: [Signature]  
Date: 11/1/04

NO.	REVISION	BY	DATE

**HIGH STEEL STRUCTURES, INC.**

1770 Hempstead Road  
Lancaster, PA 17605-0008  
Phone 717/299-5211

CROSSFRAMES CF13 & CF14  
VT 78 OVER MISSISQUOI BAY, BRIDGE NO. 2  
VT 78 STA.10+970.425 TO STA.12+059.775  
TOWNS OF ALBURG AND SWANTON  
COUNTIES OF GRAND ISLE AND FRANKLIN  
STATE OF VERMONT, AGENCY OF TRANSPORTATION

STATE CONTRACT OR REF. NO. BRF-036-1(1)  
CONTRACTOR CIAMBRO CORPORATION  
IN CHARGE: GLIDDEN (IH) MADE BY: ERS BY: JSA DATE: 8-24-04  
CONTRACT NUMBER: VT-04057-1,2&3 DRAWING NUMBER: 111 OF 112

BY: calaffar  
PLOTTED: 08/26/2004 09:21:56 AM

60