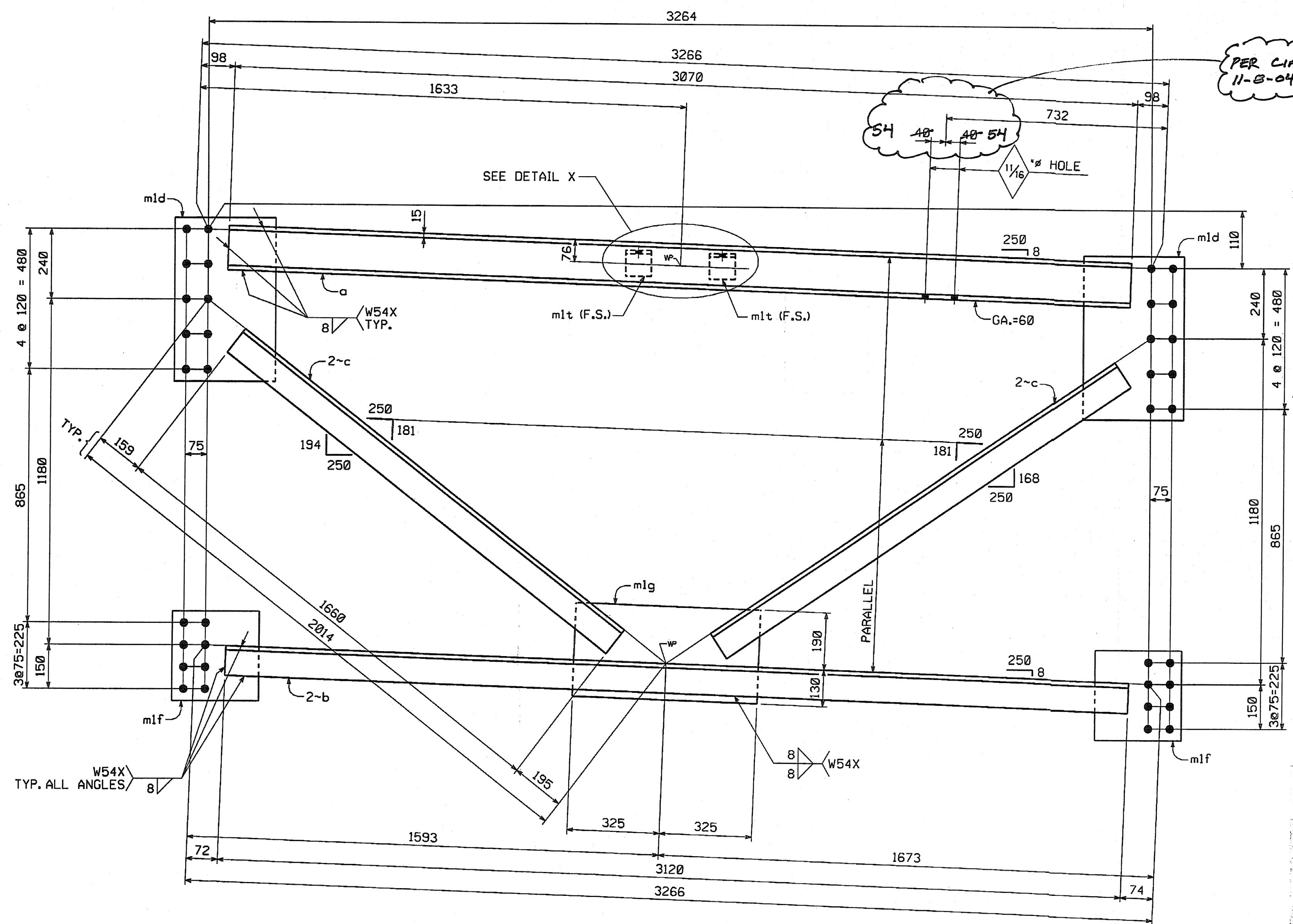


METRIC

METRIC

1. ALL DIMENSIONS ARE IN MILLIMETERS UNLESS OTHERWISE NOTED.
2. ALL WEIGHTS ARE IN KILOGRAMS.

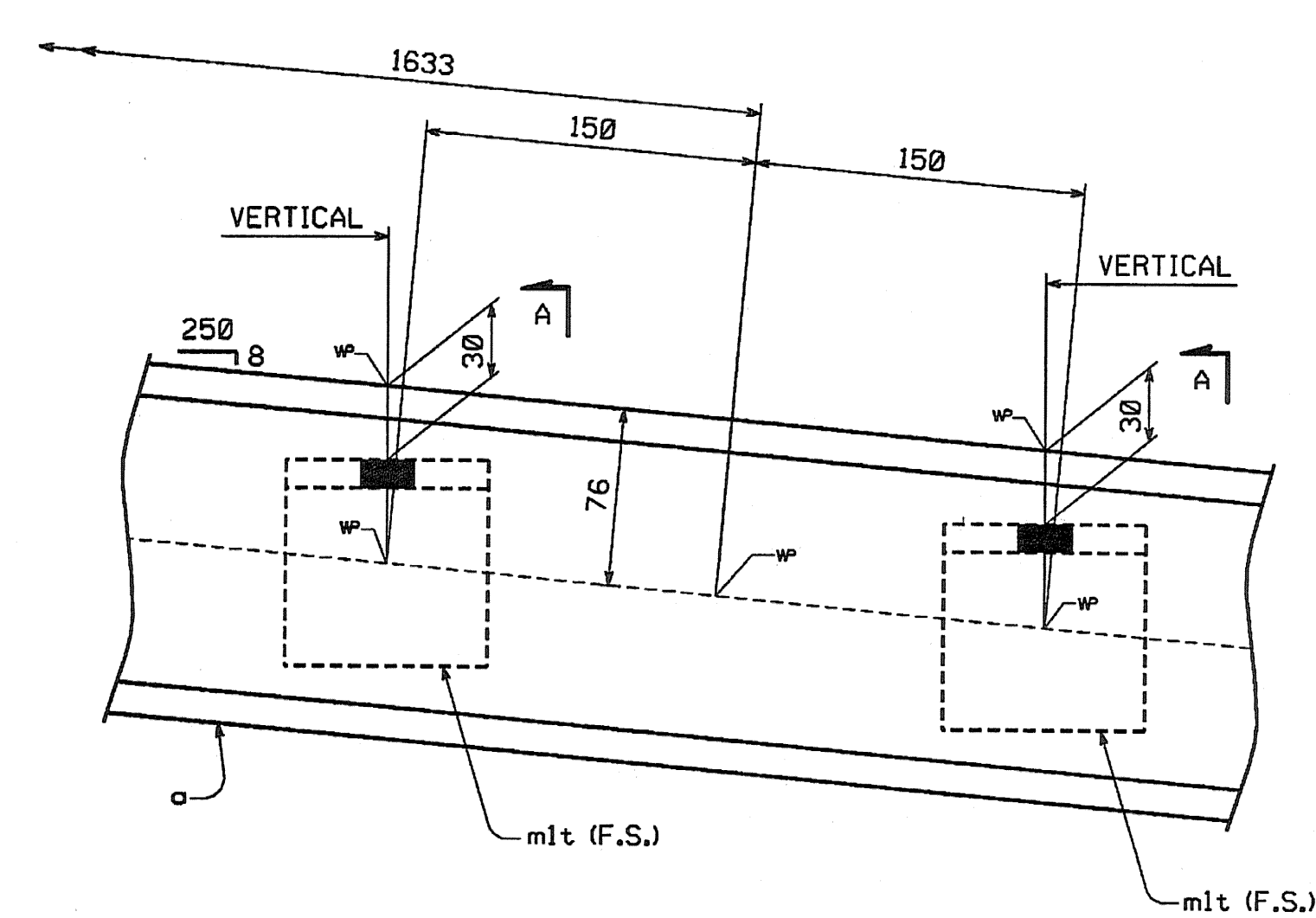
FED. ROAD DIV. NO.	STATE	FED. AID PROJ. NO.
	VT	



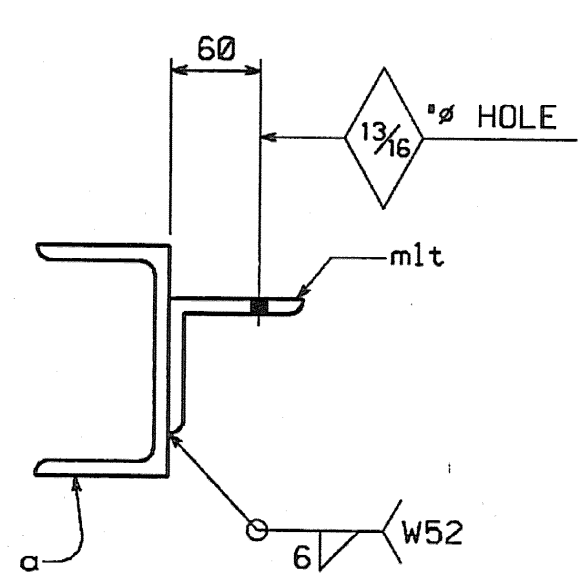
SHIPMENT			BILL OF MATERIAL							
1	2	3	NO.	MARK	DESCRIPTION	LENGTH	REMARKS	GRP.	ITEM	SHIP. WT. KG. EA.
6	7	7	20	CF12	CROSSFRAMES					429.64
			20	a	MC150 x 26.8	3 070	(MC6 x 18)		11 2	82.28
			40	b	L102 x 102 x 9.5	3 120	(L4 x 4 x 3/8)		11 4	45.12
			80	c	L102 x 102 x 15.9	1 660	(L4 x 4 x 5/8)		11 3	38.78
			40	m1d	PL 16 x 360	560			11 8	25.32
			40	m1f	PL 16 x 300	305			11 8	11.49
			20	m1g	PL 16 x 320	650			11 8	26.12
			40	m11	L89 x 89 x 9.5	90	(L3 1/2 x 3 1/2 x 3/8)		11 6	1.14
TOTAL WEIGHT THIS SHEET:							8592.80	✓	kg	JAR 7-24-06

SHIP. 1 WT~2577.84 kgs Unit #2
 SHIP. 2 WT~3007.48 kgs Unit #3
 SHIP. 3 WT~3007.48 kgs Unit #2
 Total 120

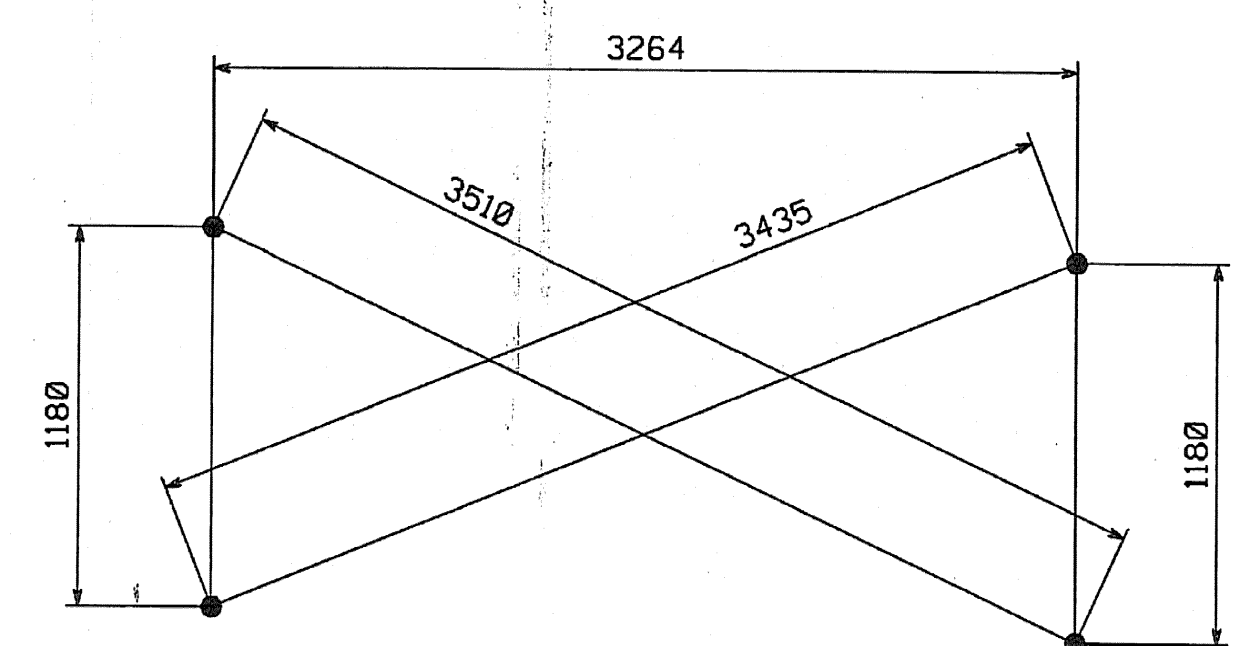
INTERMEDIATE PIER CROSSFRAME ~ MK.CF12



DETAIL X (ENLARGED)



SECTION A



CHECK DIMENSIONS

SHOP DRAWING REVIEW

REVIEWED AS REQUIRED BY THE CONSTRUCTION CONTRACT DOCUMENTS AND APPROVED, BUT ONLY FOR CONFORMANCE TO THE DESIGN CONCEPT OF THE WORK, AND SUBJECT TO FURTHER LIMITATIONS AND REQUIREMENTS CONTAINED IN THE CONSTRUCTION CONTRACT DOCUMENTS.

REJECTED REVISE AND REISSUE FURNISH AS CORRECTED

CORRECTIONS OR COMMENTS MADE ON THE SHOP DRAWING FOR WHICH THIS REVIEW IS NOT REQUIRED SHALL BE THE RESPONSIBILITY OF THE CONTRACTOR. THE CONTRACTOR SHALL BE RESPONSIBLE FOR CORRECTING AND REISSUING THE SHOP DRAWING TO REFLECT ALL CORRECTIONS AND COMMENTS. THE CONTRACTOR SHALL BE RESPONSIBLE FOR CORRECTING AND REISSUING ALL DIMENSIONS AND DIMENSIONS FOR FABRICATION AND CONSTRUCTION. THE CONTRACTOR SHALL BE RESPONSIBLE FOR CORRECTING AND REISSUING ALL DIMENSIONS AND DIMENSIONS FOR FABRICATION AND CONSTRUCTION. THE CONTRACTOR SHALL BE RESPONSIBLE FOR CORRECTING AND REISSUING ALL DIMENSIONS AND DIMENSIONS FOR FABRICATION AND CONSTRUCTION.

VHB Vanasse Hangen Brustlin, Inc.
 Engineers, Planners, and Scientists
 500 Bedford Farm, Kilton Rd.
 Bedford, NH 03102 603 644 0888

Job Number: 58011
 Reviewed By: [Signature]
 Date: 11/16/04

NO.	REVISION	BY	DATE

HIGH STEEL STRUCTURES, INC.

1770 Hempstead Road
 Lancaster, PA 17603-0008
 Phone 717/299-5211

A Division of High Industries, Inc.

CROSSFRAME CF12
 VT 78 OVER MISSISQUOI BAY, BRIDGE NO. 2
 VT 78 STA.10+970.425 TO STA.12+059.775
 TOWNS OF ALBURG AND SWANTON
 COUNTIES OF GRAND ISLE AND FRANKLIN
 STATE OF VERMONT, AGENCY OF TRANSPORTATION

STATE CONTRACT OR REF. NO. BRF-036-1(1)
 CONTRACTOR CIAMBRO CORPORATION
 IN CHARGE: GLIDDEN (IH) MADE BY: [Signature] CHK'D BY: JSA DATE: 8-24-04
 CONTRACT NUMBER: VT-04057-1,2&3 DRAWING NUMBER: 110 OF 112

BY: cahoffter
PLOTTED: 08/25/2004 08:21:54 AM

CODE:63