

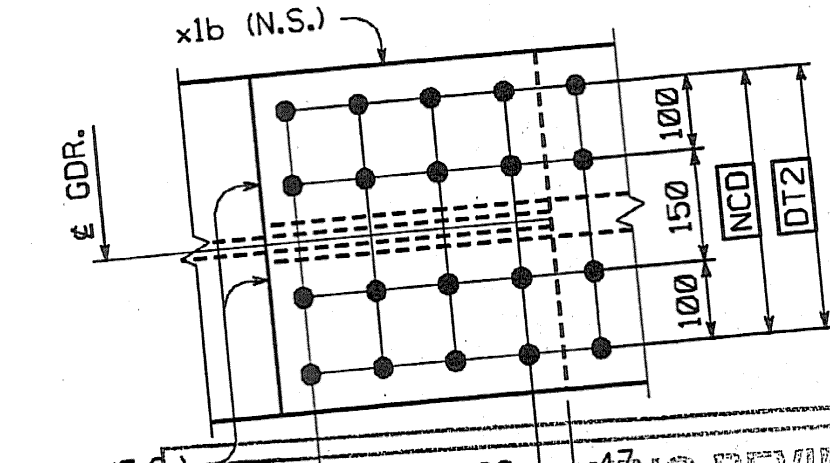
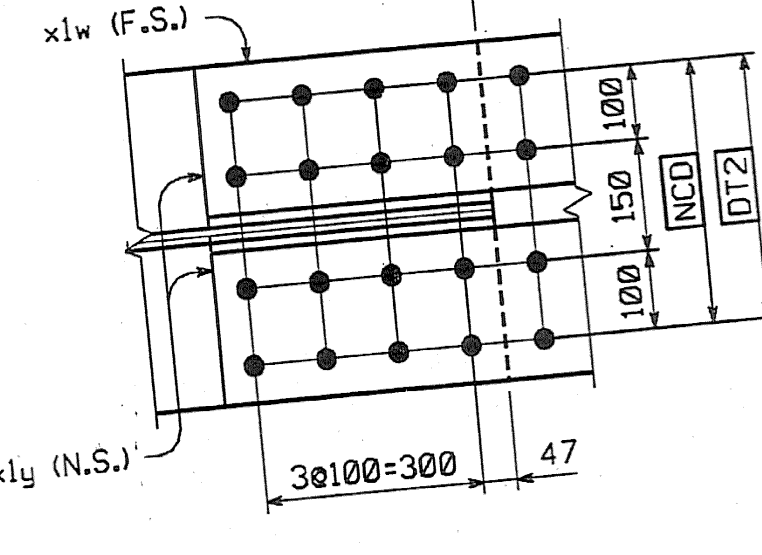
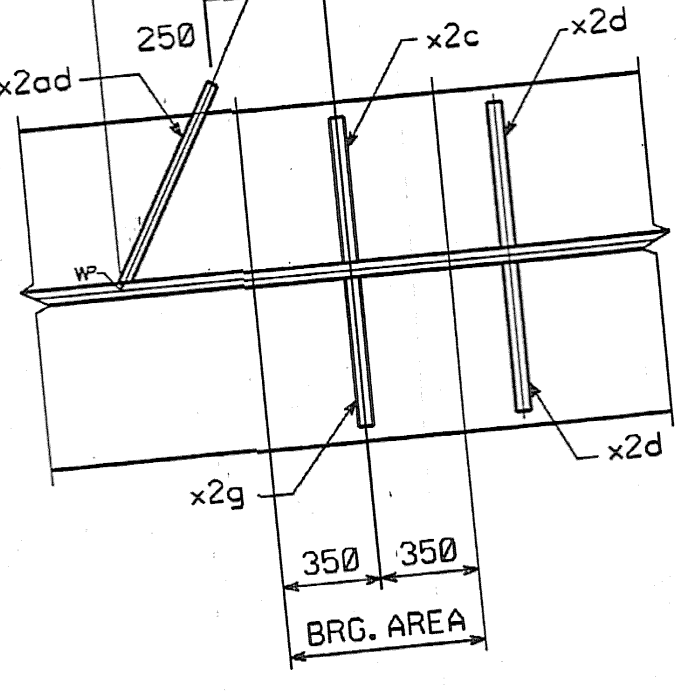
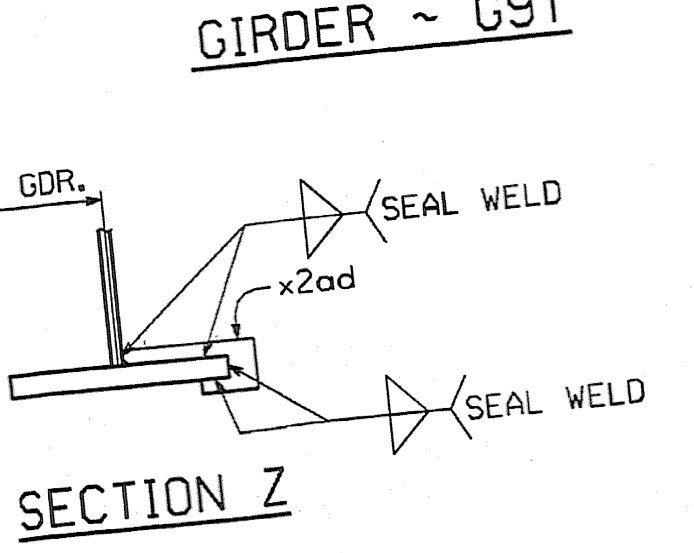
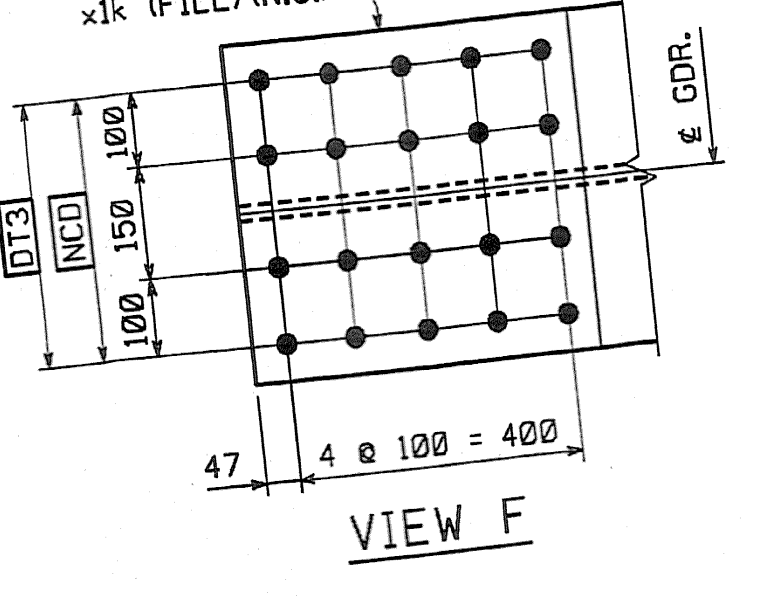
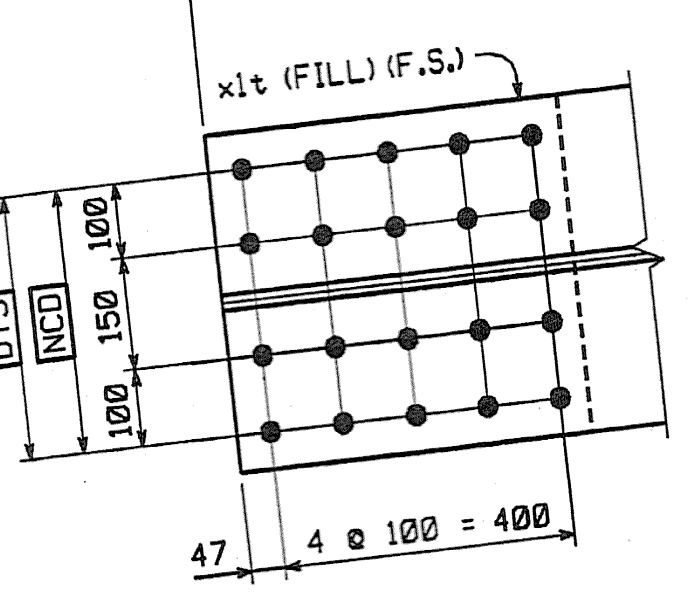
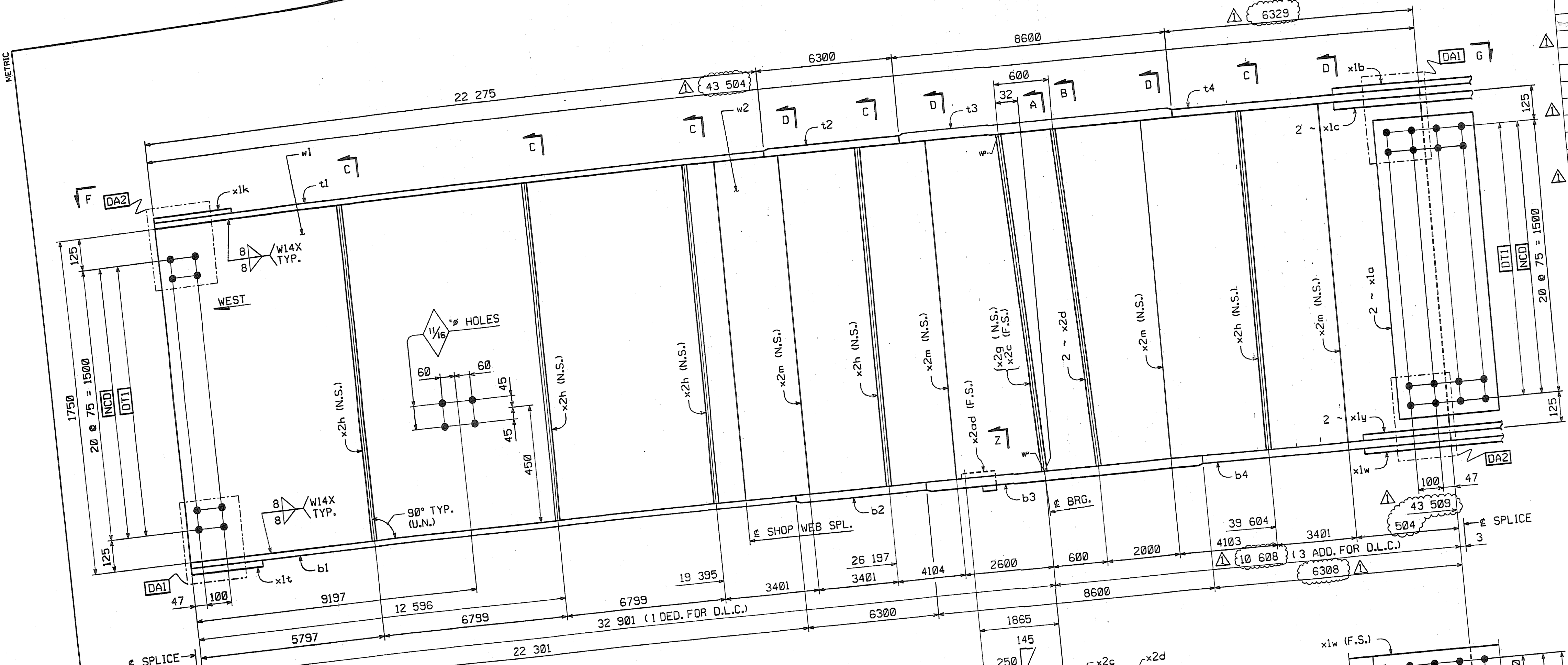
METRIC

1. ALL DIMENSIONS ARE IN MILLIMETERS UNLESS OTHERWISE NOTED.
2. ALL WEIGHTS ARE IN KILOGRAMS.

FED. ROAD DIV. NO. STATE VT FED. AID PROJ. NO.

NO.	MARK	DESCRIPTION	LENGTH	REMARKS	GRP.	ITEM	SHIP. WT. KG. EA.
ONE	G9T	GIRDER					20 860
1	w1	PL 16 x 1750	19 908 (T)		3	9	4375.28
1	w2	PL 16 x 1750	23 608 (T)	43576	3	2	5168.44
1	t1	PL 22 x 450	22 275 (T)		4	25	1730.90
1	t2	PL 32 x 450	6 300 (T)		4	15	742.07
1	t3	PL 32 x 450	6 300 (T)		4	3	1974.44
1	t4	PL 65 x 450	8 600 (T)		4	13	715.35
1	b1	PL 22 x 450	6 329 (T)		4	23	1732.92
1	b2	PL 32 x 450	22 301 (T)		4	15	712.07
1	b3	PL 32 x 450	6 300 (T)		4	3	1974.44
1	b4	PL 65 x 450	8 600 (T)		4	14	742.07
2	x1a	PL 12 x 1600	400 (T)		6	1	60.28
1	x1b	PL 14 x 450	790 (T)		6	6	39.06
2	x1c	PL 16 x 200	790 (T)		6	5	19.84
1	x1k	PL 18 x 450	492 FILL		6	4	31.28
1	x1f	PL 18 x 450	492 FILL		6	6	39.06
1	x1w	PL 14 x 450	790 (T)		6	5	19.84
2	x1y	PL 16 x 200	790 (T)		7	1	104.39
1	x2c	PL 38 x 200	1750		7	1	104.39
2	x2d	PL 38 x 200	1750		7	1	104.39
1	x2g	PL 38 x 200	1750		7	4	29.67
5	x2h	PL 12 x 180	1750		7	4	29.67
4	x2m	PL 12 x 180	1750		7	5	1.83
1	x2ad	PL 6 x 115	301	Vol = 79650 m ³			

TOTAL WEIGHT THIS SHEET: 20-865-74 kgs



PLANNING REVIEW

REVIEWED AS REQUIRED BY THE CONSTRUCTION CONTRACT DOCUMENTS AND APPROVED, BUT ONLY FOR CONCEPTUAL PURPOSES. THE DESIGN CONCEPT OF THE WORK, AND SUBJECT TO FURTHER LIMITATIONS AND CONDITIONS CONTAINED IN THE CONSTRUCTION CONTRACT DOCUMENTS.

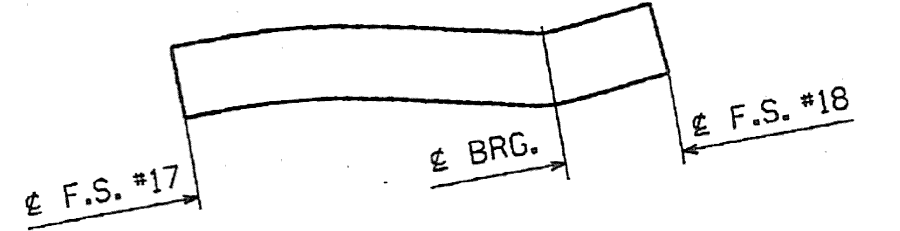
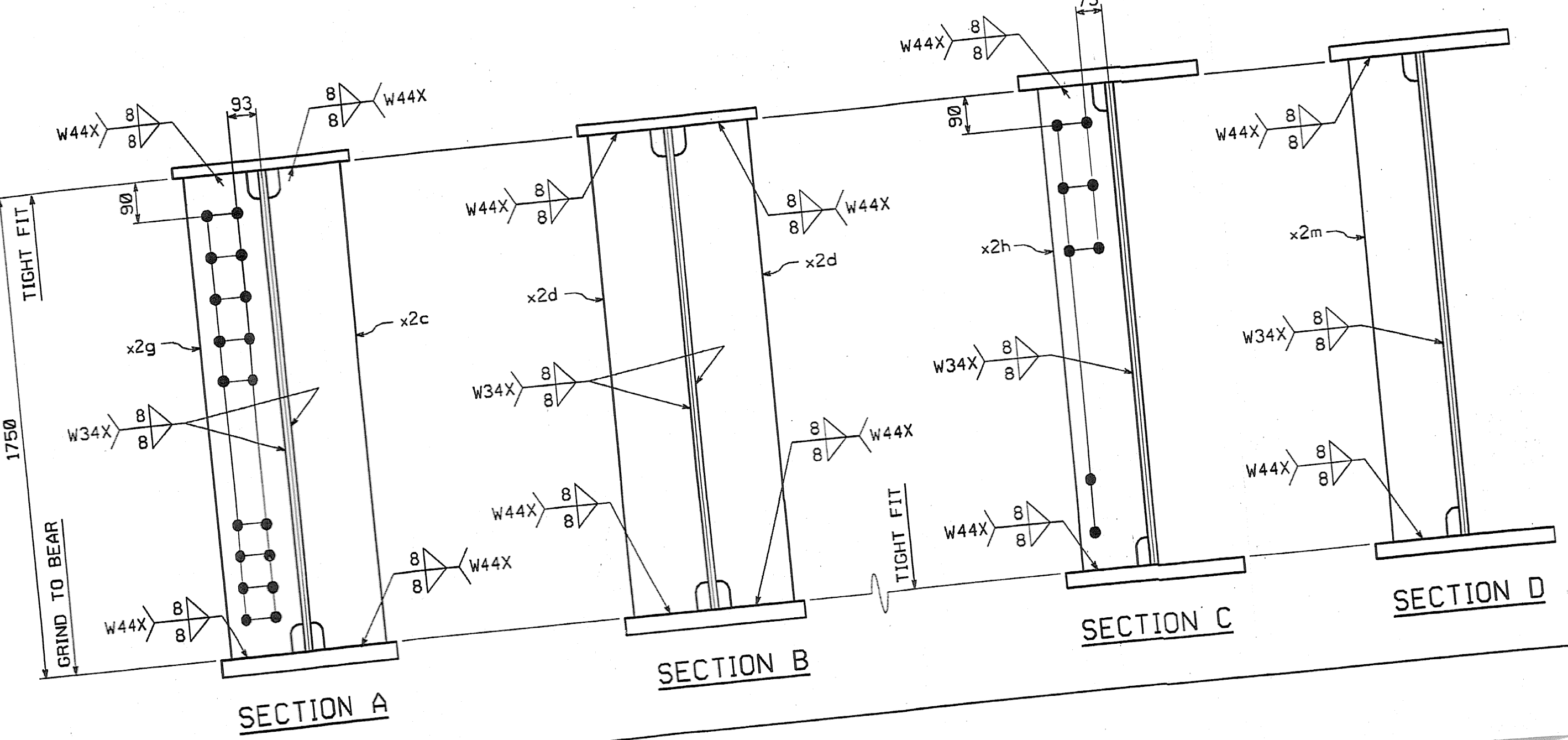
REJECTED REVISE AND RE-submit PROCEED AS CORRECTED

CORRECTIONS OR COMMENTS MADE ON THE SHOP DRAWINGS BEING THIS REVIEW DO NOT RELIEVE CONTRACTOR FROM COMPLIANCE WITH REQUIREMENTS OF THE CONTRACT DOCUMENTS SPECIFICALLY THIS CHECK IS ONLY FOR REVIEW OF GENERAL CONCEPTS FROM THE DESIGN CONCEPT OF THE PROJECT AND REVIEW OF GENERAL CONCEPTS FROM THE DESIGN CONCEPT OF THE PROJECT AND REVIEW OF GENERAL CONCEPTS FROM THE DESIGN CONCEPT OF THE PROJECT.

Reviewed By: *[Signature]*
Date: *[Date]*

BY: dpanator

DATE: 9/20/2004 10:42 PM



SHOP NOTE

HOLES: 19/16" (U.N.)
BOLTS: NONE
PAINT: NONE
FOR GENERAL SHOP NOTES, SEE DWG. GNI.
FOR WEB CAMBER DIAGRAM, SEE DWG. WC.4.

NO.	REVISION	DATE
1	INCREASE LENGTHS TO SATISFY REQUIREMENTS FOR LENGTH & MEAN TEMPERATURE OF 45°F.	9/20/04

HIGH STEEL STRUCTURES, INC.
1770 Hempstead Road
Lancaster, PA 17605-0008
Phone 717/299-5211

GIRDER
VT 78 OVER MISSISSQUOI BAY, BRIDGE NO. 2
VT 78 STA.10+970.425 TO STA.12+059.775
TOWNS OF ALBURG AND SWANTON
COUNTIES OF GRAND ISLE AND FRANKLIN
STATE OF VERMONT, AGENCY OF TRANSPORTATION

STATE CONTRACT OR REF. NO. BRF-036-1(1)
CONTRACTOR CIAMBRO CORPORATION
IN CHARGE: GLIDDEN (IH)
CONTRACT NUMBER: VT-04057-3

MADE BY: SSL
CHK'D. BY: CS
DATE: 8-24-04
DRAWING NUMBER: 77 OF 112