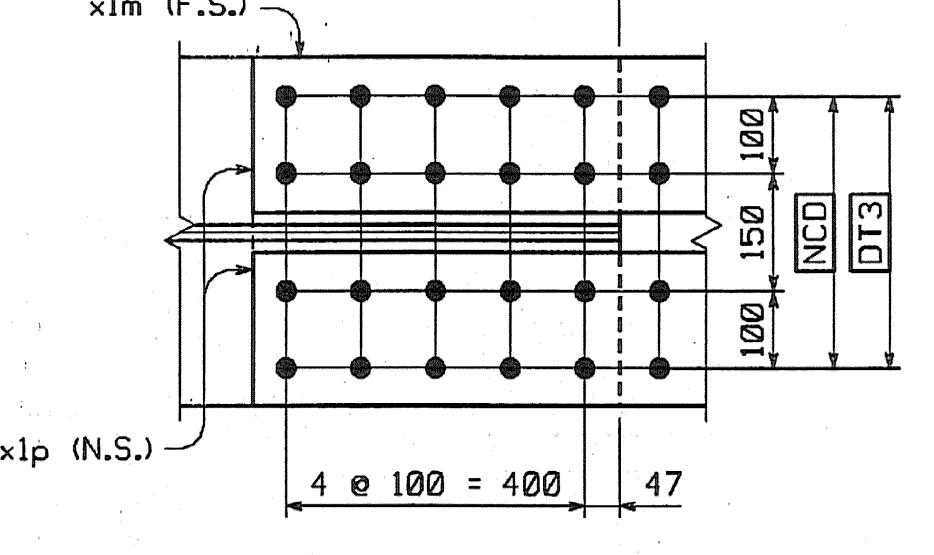
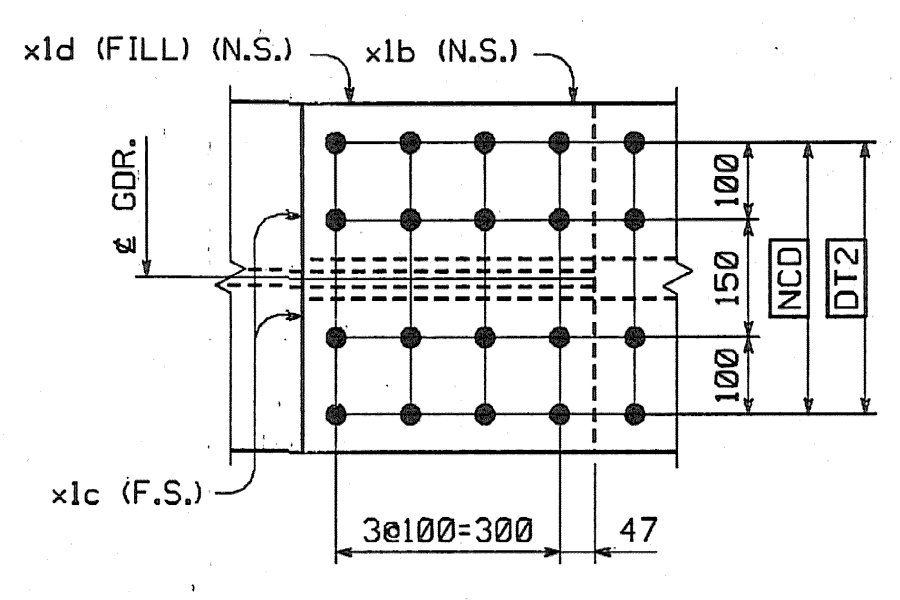
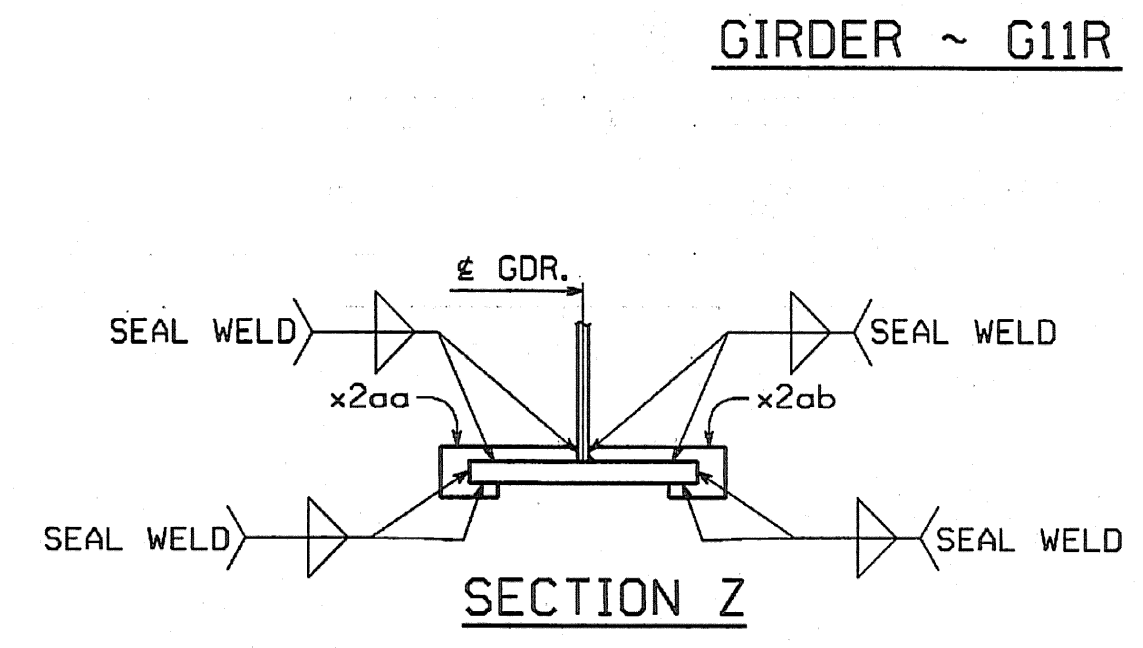
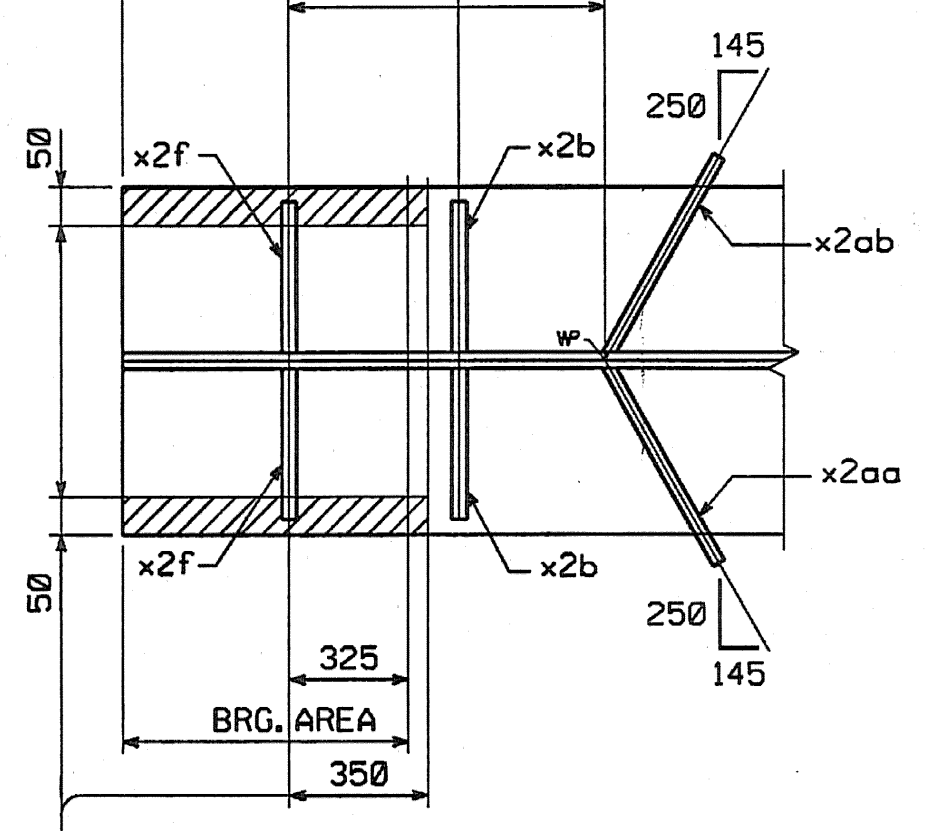
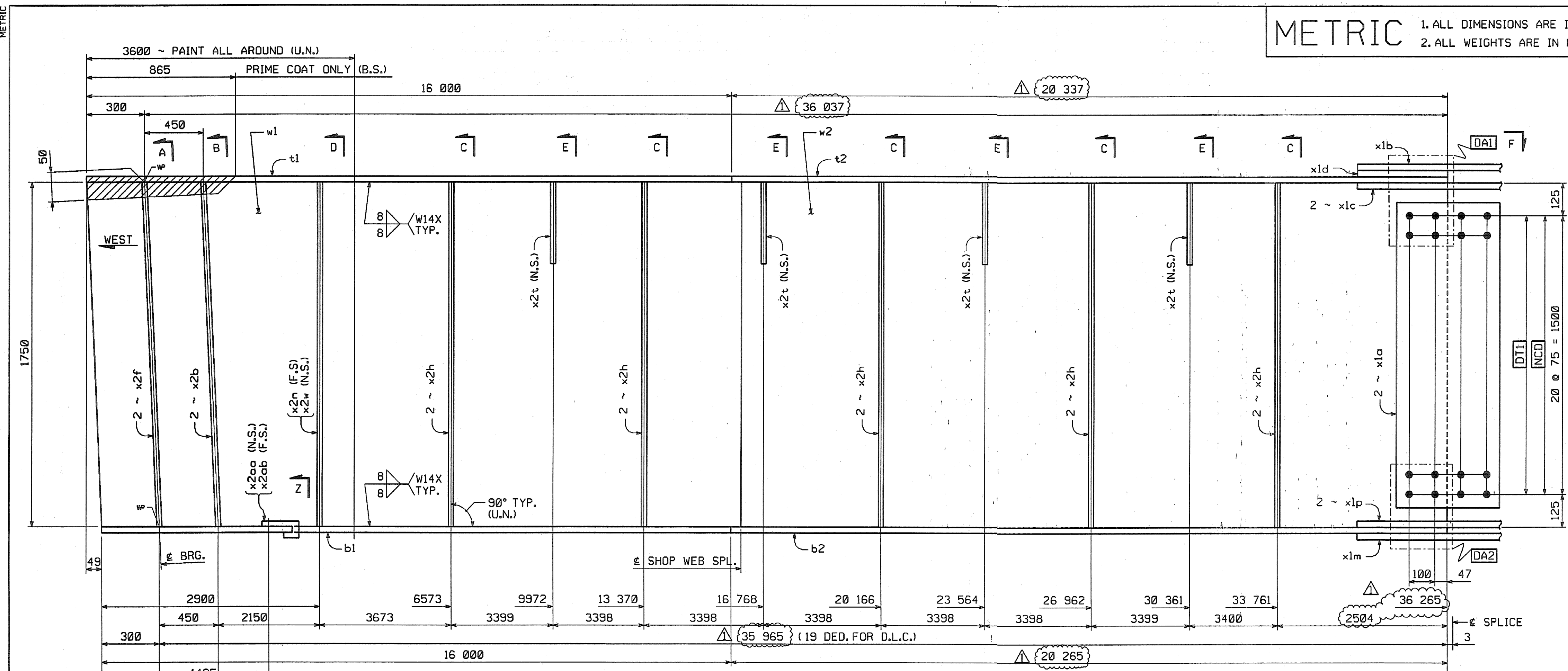


BILL OF MATERIAL

| NO. | MARK | DESCRIPTION | LENGTH | REMARKS | GRP. | ITEM | SHIP WT. KG. EA. |
|-----|------|-------------|--------|---|------|------|------------------|
| ONE | G11R | GIRDER | | | | | 16 910 |
| -1 | w1 | PL 16 | x 1750 | 16 342 (T) | 3 | 10 | 3591.56 |
| 1 | w2 | PL 16 | x 1750 | 19 996 (T) 36301 | 3 | 8 | 4394.62 |
| 1 | t1 | PL 22 | x 450 | 16 000 (T) 16000 | 4 | 28 | 1243.38 |
| 1 | t2 | PL 22 | x 450 | 20 337 (T) | 4 | 26 | 1580.31 |
| 1 | b1 | PL 40 | x 450 | 16 004 (T) 16000 | 4 | 5 | 2260.68 |
| 1 | b2 | PL 40 | x 450 | 20 265 (T) | 4 | 4 | 2863.12 |
| 2 | x1a | PL 12 | x 1600 | 400 (T) | 6 | 1 | 60.28 |
| 1 | x1b | PL 14 | x 450 | 790 (T) | 6 | 6 | 39.06 |
| 2 | x1c | PL 16 | x 200 | 790 (T) | 6 | 5 | 19.84 |
| 1 | x1d | PL 18 | x 450 | 392 FILL | 6 | 4 | 24.92 |
| 1 | x1m | PL 18 | x 450 | 990 (T) | 6 | 3 | 62.94 |
| 2 | x1p | PL 20 | x 200 | 990 (T) | 6 | 2 | 31.08 |
| 2 | x2b | PL 22 | x 200 | 1750 | 7 | 2 | 60.44 |
| 2 | x2f | PL 22 | x 200 | 1750 | 7 | 2 | 60.44 |
| 10 | x2h | PL 12 | x 180 | 1750 | 7 | 4 | 29.67 |
| 1 | x2n | PL 12 | x 180 | 1750 | 7 | 4 | 29.67 |
| 4 | x2l | PL 14 | x 180 | 310 | 7 | 3 | 6.13 |
| 1 | x2w | PL 12 | x 180 | 1750 | 7 | 4 | 29.67 |
| 1 | x2aa | PL 6 | x 90 | 301 * V ₁ = 72150mm ³ | 7 | 5 | 1.28 |
| 1 | x2ab | PL 6 | x 90 | 301 | 7 | 5 | 1.28 |

TOTAL WEIGHT THIS SHEET: 46907.87 kgs

*SEE SHEET 10F112 16900.04 kg JMR 8-9-06 08-21-06



LIGHT RUST PREVENTIVE COAT OF PRIMER BOTT. OF BOTT. F.L.C., EDGES & SHADED AREA (N.S.)

SHOP DRAWING REVIEW

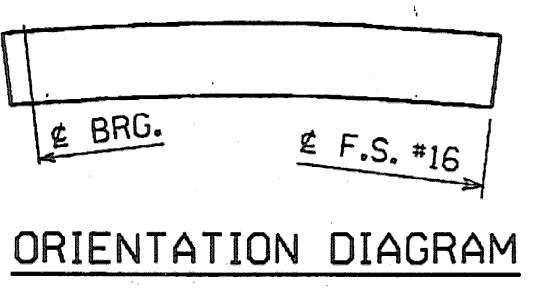
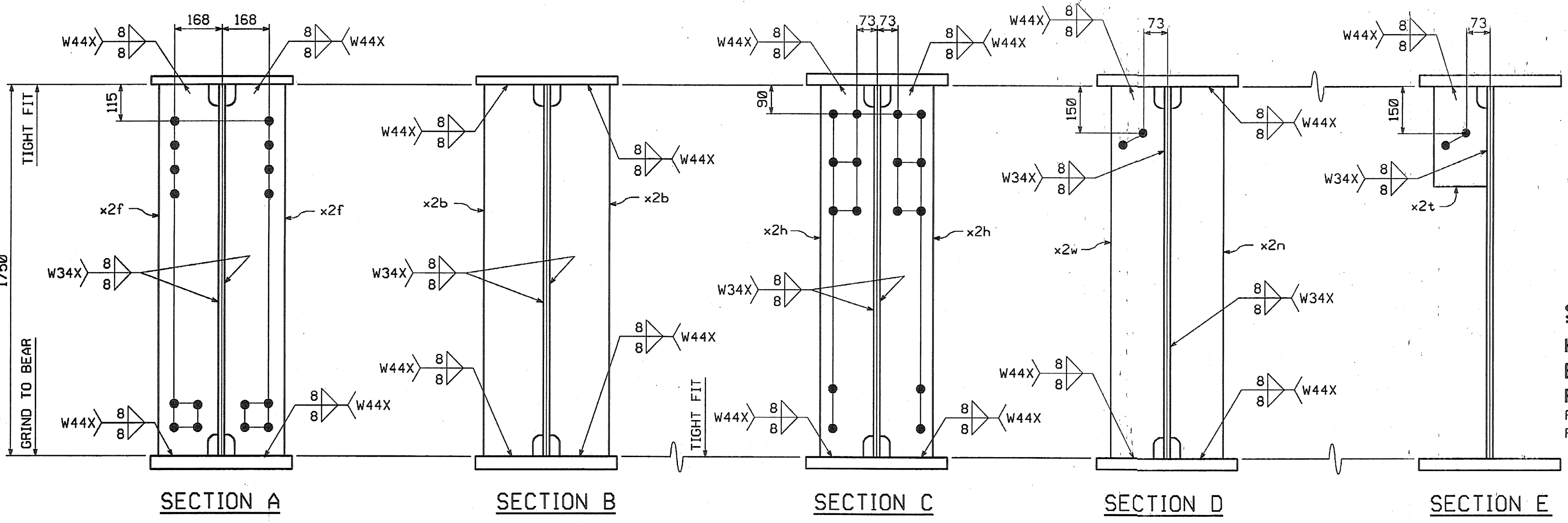
REVIEWED AS REQUIRED BY THE CONSTRUCTION CONTRACT DOCUMENTS AND APPROVED, BUT ONLY FOR CONFORMANCE TO THE DESIGN CONCEPT OF THE WORK, AND SUBJECT TO FURTHER LIMITATIONS AND REQUIREMENTS CONTAINED IN THE CONSTRUCTION CONTRACT DOCUMENTS.

REJECTED REVISE AND RESUBMIT FURNISH AS CORRECTED

CORRECTIONS OR COMMENTS MADE ON THE SHOP DRAWINGS DURING THIS REVIEW DO NOT RELIEVE CONTRACTORS FROM COMPLIANCE WITH REQUIREMENTS OF THE CONTRACT AND SPECIAL PROVISIONS. THIS CHECK IS ONLY FOR REVIEW OF GENERAL OCCURRENCE WITH THE DESIGN CONCEPT OF THE PROJECT AND GENERAL COMPLIANCE WITH THE INFORMATION GIVEN IN THE CONTRACT DOCUMENTS. THE CONTRACTOR IS RESPONSIBLE FOR CONSULTING AND CORRECTING ALL QUANTITIES AND DIMENSIONS, AND FOR THE PROVISION OF PRODUCTION AND TECHNIQUES OF CONSTRUCTION, CONSTRUCTION METHODS, AND MATERIALS, AND PERFORMANCE OF THE WORK IN A SAFE AND SATISFACTORY MANNER.

Vanasse Hangen Brustlin, Inc.
Engineers, Planners, and Scientists
Six Goodrich Farm, Water Rd.
Bedford, NH 03112 603 844 0080

Job Number: 5041
Reviewed By: *[Signature]*
Date: 11/10/04



SHOP NOTE

HOLES: 1 5/16"

BOLTS: NONE

PAINT: SEE DWG. G01 FOR GENERAL SHOP NOTES, SEE DWG. G01 FOR WEB CAMBER DIAGRAM, SEE DWG. WC4.

| | | | |
|-----|----------|----|---------|
| NO. | REVISION | DP | DATE |
| | | | 9/20/04 |

1770 Hempstead Road
Lancaster, PA 17605-0008
Phone 717/299-5211

HIGH STEEL STRUCTURES, INC.

A Division of High Industries, Inc.

GIRDER G11R

VT 78 OVER MISSISQUOI BAY, BRIDGE NO. 2

VT 78 STA.10+970.425 TO STA.12+059.775

TOWNS OF ALBURG AND SWANTON

COUNTIES OF GRAND ISLE AND FRANKLIN

STATE OF VERMONT, AGENCY OF TRANSPORTATION

STATE CONTRACT OR REF. NO. BRF-036-1(1)

CONTRACTOR CIAMBRO CORPORATION

IN CHARGE: GLIDDEN (IH) MADE BY: SSL CHK'D. BY: CS DATE: 8-24-04

CONTRACT NUMBER: VT-04057-3 DRAWING NUMBER: 71 OF 112