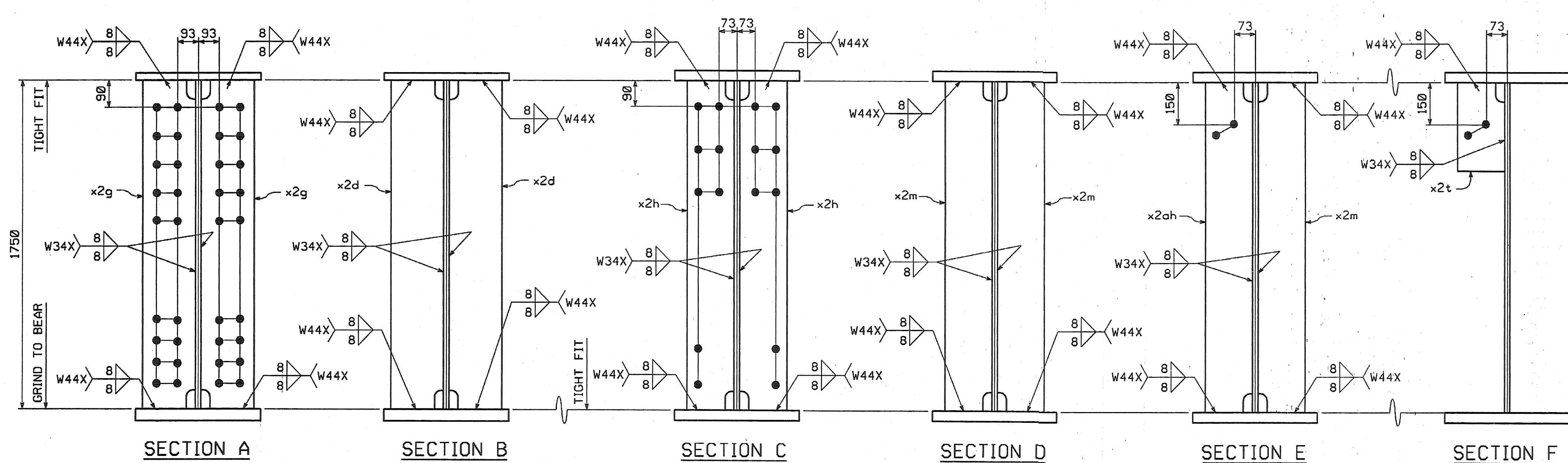
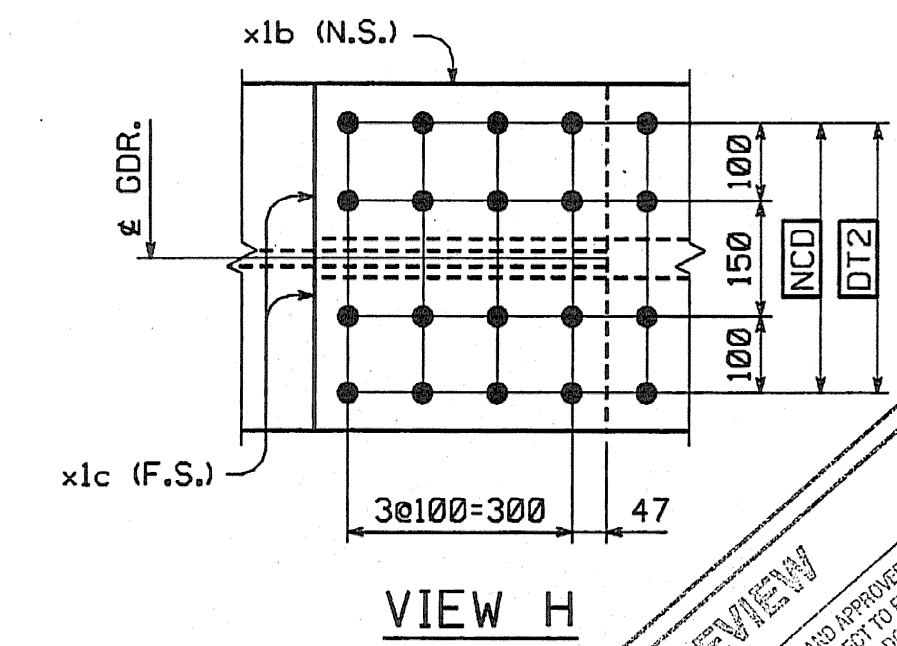
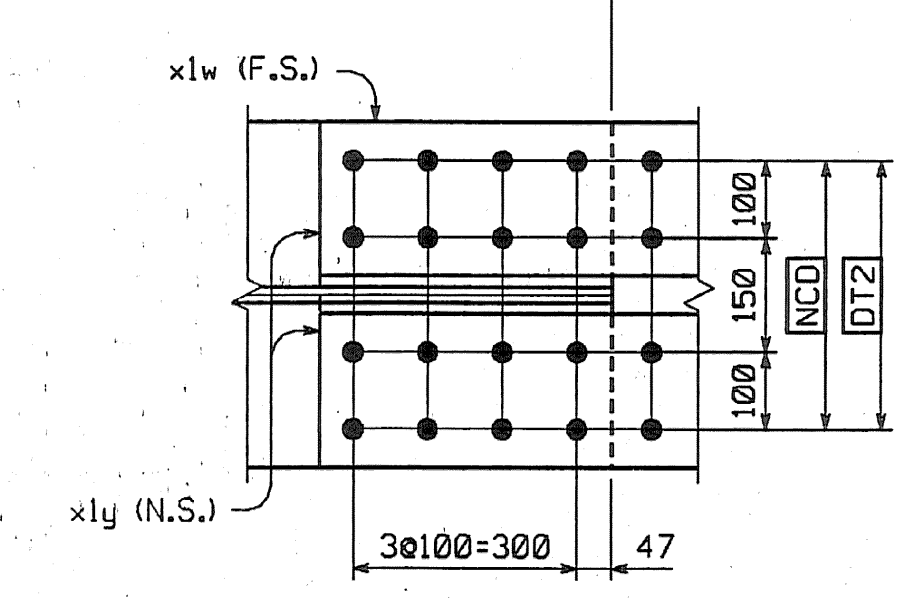
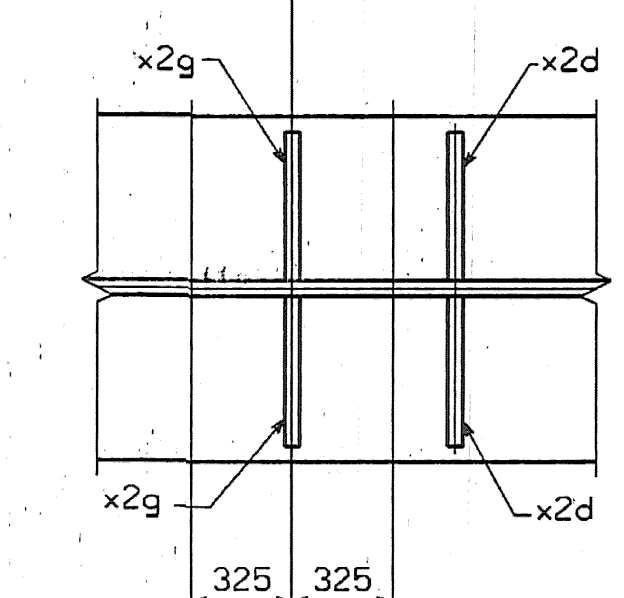
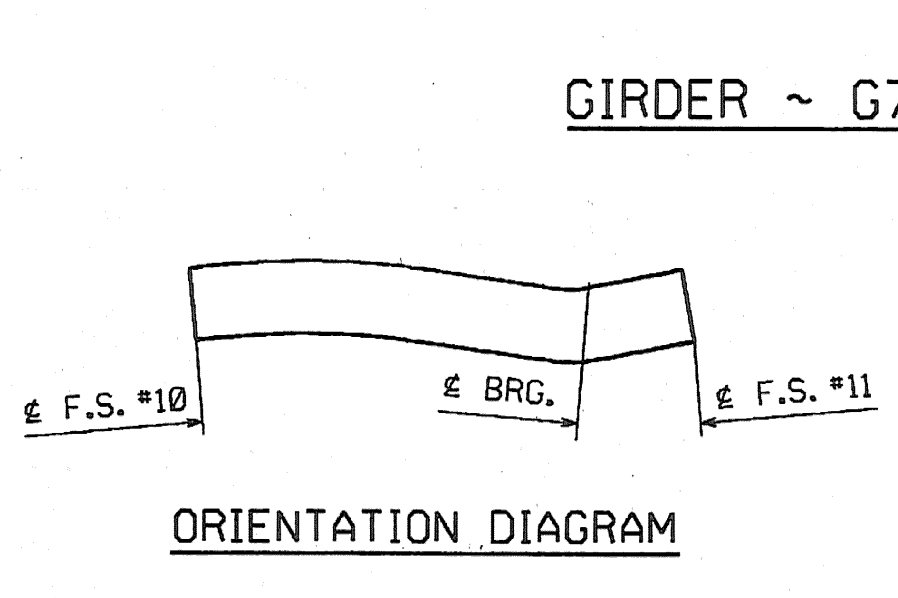
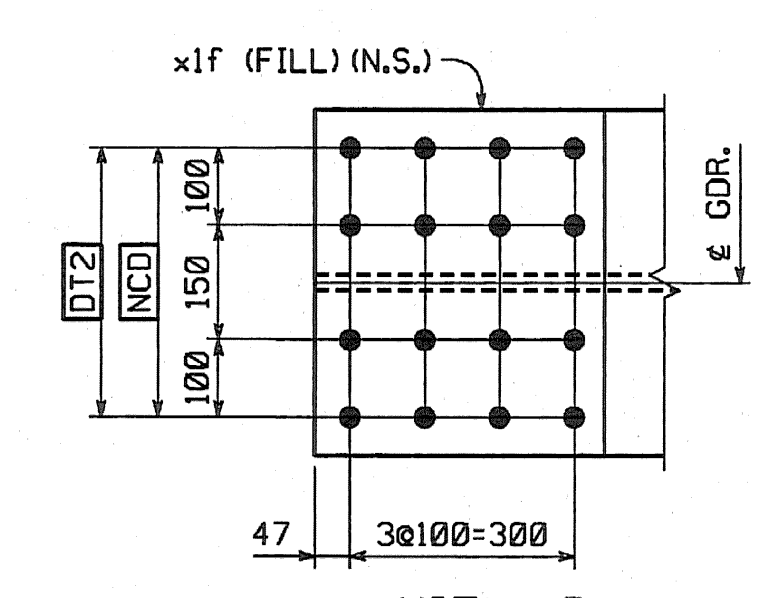
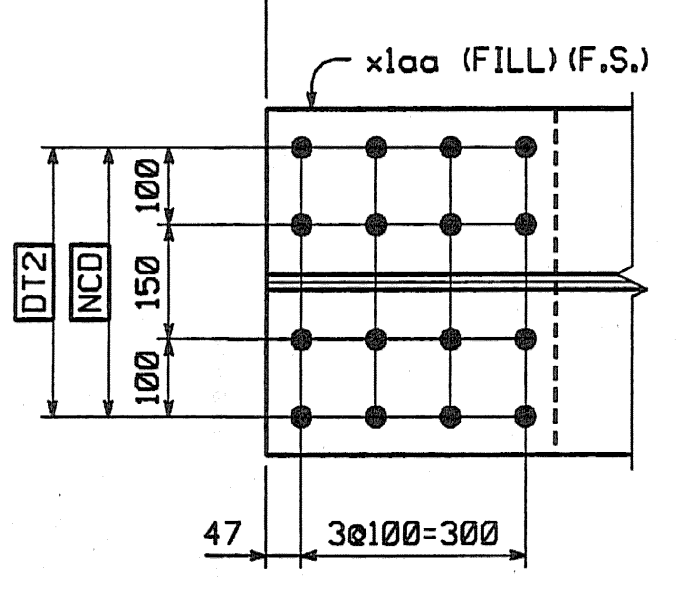
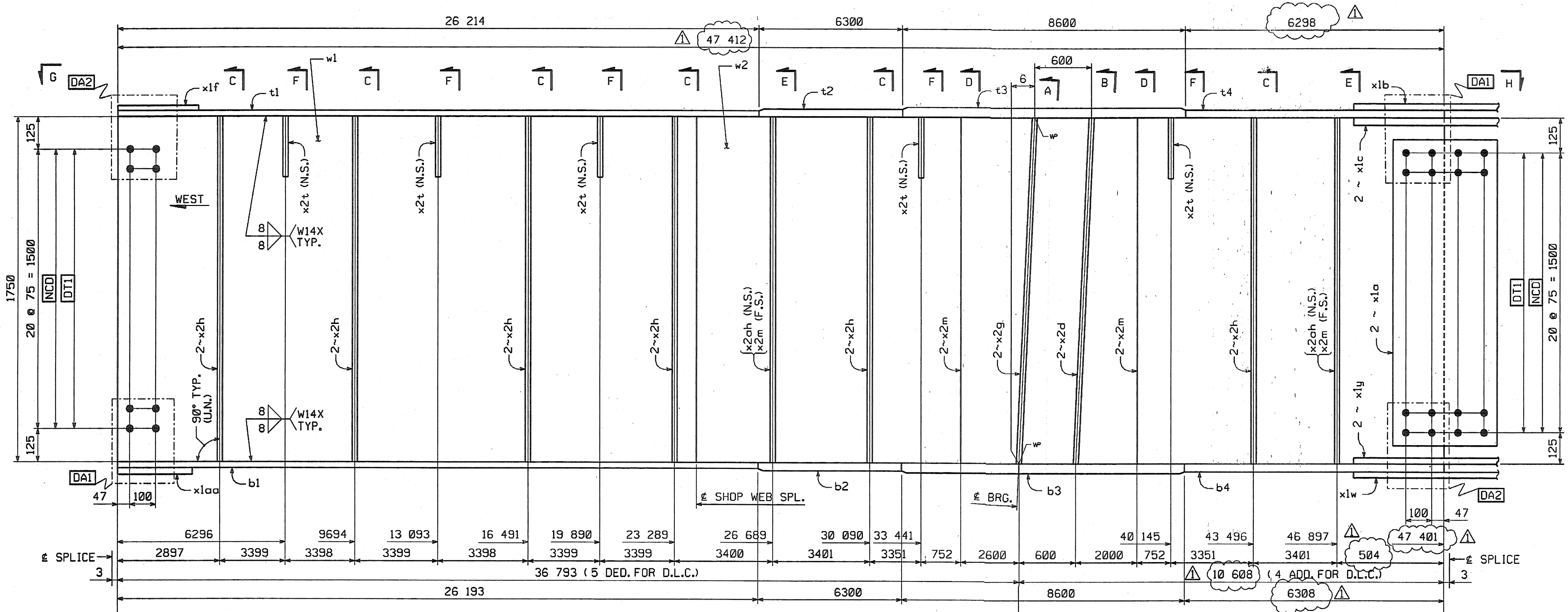


METRIC

METRIC 1. ALL DIMENSIONS ARE IN MILLIMETERS UNLESS OTHERWISE NOTED.
2. ALL WEIGHTS ARE IN KILOGRAMS.

FED. ROAD DIST. NO.	STATE	FED. AID PROJ. NO.
	VT	

BILL OF MATERIAL										
NO.	MARK	DESCRIPTION	LENGTH	REMARKS	GRP.	ITEM	SHIP. WT.			
ONE	G7L	GIRDER					Kg. EA.			
4	w1	PL 16 x 1750	23-809	(T)		3-4	5232.62			
1	w2	PL 16 x 1750	23-810	(T)	47406	3-7	5488.88	10419.95		
1	tl	PL 22 x 450	26-214	(T)		4-19	2038.99	2037.22		
1	t2	PL 32 x 450	6-300	(T)		4-15	742.07	712.15		
1	t3	PL 65 x 450	8-600	(T)		4-3	1974.44	1974.67		
1	t4	PL 32 x 450	6-298	(T)		4-15	711.84	711.93		
1	b1	PL 22 x 450	26-193	(T)		4-20	2035.96	2035.59		
1	b2	PL 32 x 450	6-300	(T)		4-15	742.07	712.15		
1	b3	PL 65 x 450	8-600	(T)		4-3	1974.44	1974.67		
1	b4	PL 32 x 450	6-308	(T)		4-14	742.97	713.06		
2	x1a	PL 12 x 1600	400	(T)		6-1	60.28	120.58		
1	x1b	PL 14 x 450	790	(T)		6-6	39.06	39.07		
2	x1c	PL 16 x 200	790	(T)		6-5	19.84	39.69		
1	x1f	PL 10 x 450	392	FILL		6-7	13.85	39.07		
1	x1w	PL 14 x 450	790	(T)		6-6	39.06	39.69		
2	x1y	PL 16 x 200	790	(T)		6-5	19.84	39.69		
1	x1aa	PL 10 x 450	392	FILL		6-7	13.85	208.81		
2	x2d	PL 38 x 200	1-750			7-1	104.39	208.81		
2	x2g	PL 38 x 200	1-750			7-1	104.39	356.08		
12	x2h	PL 12 x 180	1-750			7-4	29.67	175.04		
6	x2m	PL 12 x 180	1-750			7-4	29.67	30.66		
5	x2t	PL 14 x 180	310			7-3	6.13	59.35		
2	x2ah	PL 12 x 180	1-750			7-4	29.67			
TOTAL WEIGHT THIS SHEET:							22-639.06	kgs		



SHOP NOTE

HOLES: 1/16" DIA
 BOLTS: NONE
 PAINT: NONE
 FOR GENERAL SHOP NOTES, SEE DWG. CNI
 FOR WEB CAMBER DIAGRAM, SEE DWG. WBS

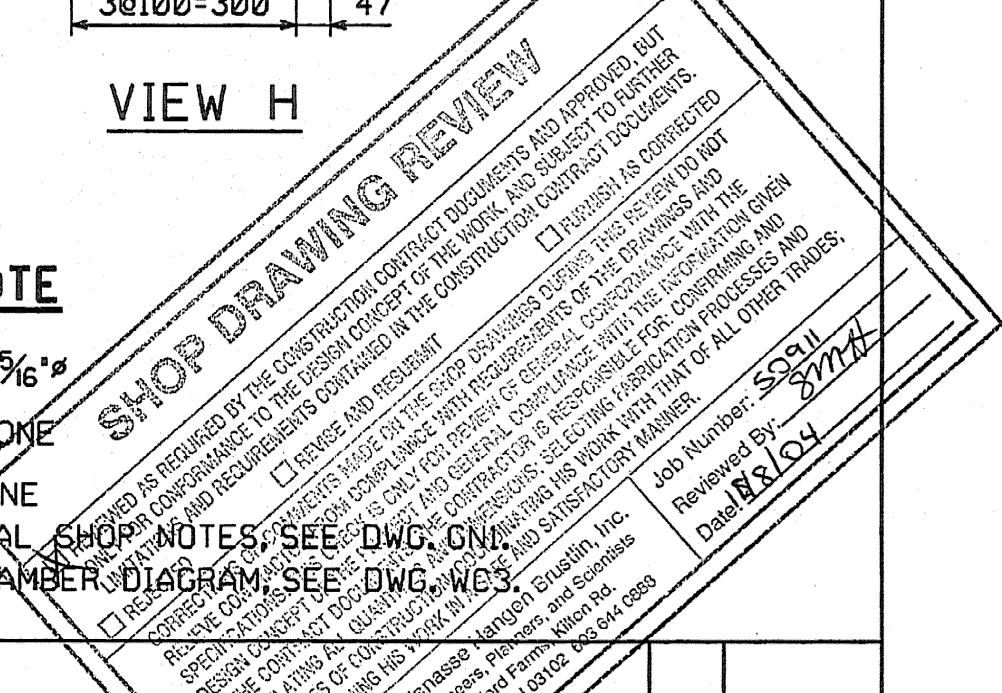
NO.	REVISION	BY	DATE
1	INCREASE LENGTHS TO SATISFY REQUIREMENTS FOR LENGTH	JSA	9/17/04
2	MEAN TEMPERATURE OF 45°F		

1770 Hempstead Road
 Lancaster, PA 17602-0008
 Phone: 717/299-5211

HIGH STEEL STRUCTURES, INC.
 A Division of High Industries, Inc.

GIRDER G7L
 VT 78 OVER MISSISSQUOI BAY, BRIDGE NO. 2
 VT 78 STA.10+970.425 TO STA.12+059.775
 TOWNS OF ALBURG AND SWANTON
 COUNTIES OF GRAND ISLE AND FRANKLIN
 STATE OF VERMONT, AGENCY OF TRANSPORTATION

STATE CONTRACT OR REF. NO. BRF-036-1(1)
 CONTRACTOR CIAMBRO CORPORATION
 IN CHARGE: GLIDDEN (IH) MADE BY: SES CHK'D. BY: GS DATE: 8-20-04
 CONTRACT NUMBER: VT-04057-2 DRAWING NUMBER: 47 OF 112



BY: dpointner
 PLOTTED: 9/20/2004 14:52:28 PM

CODE:30