

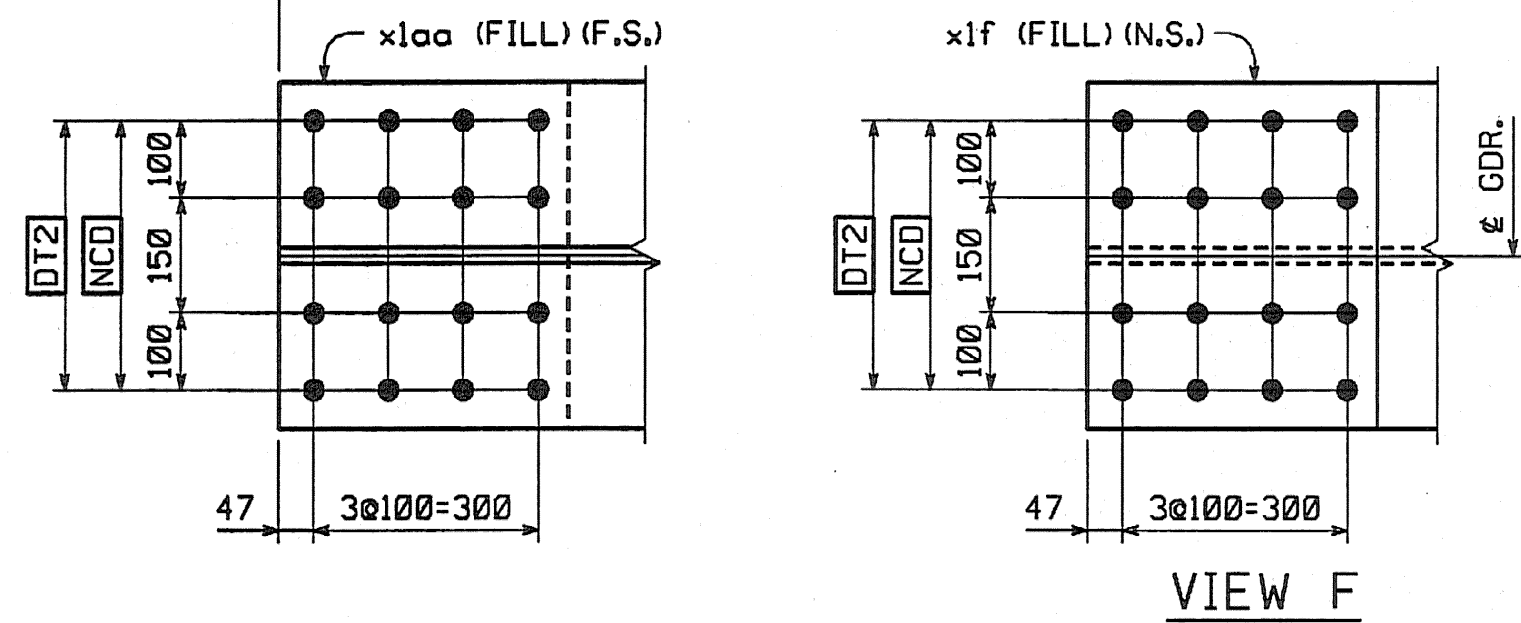
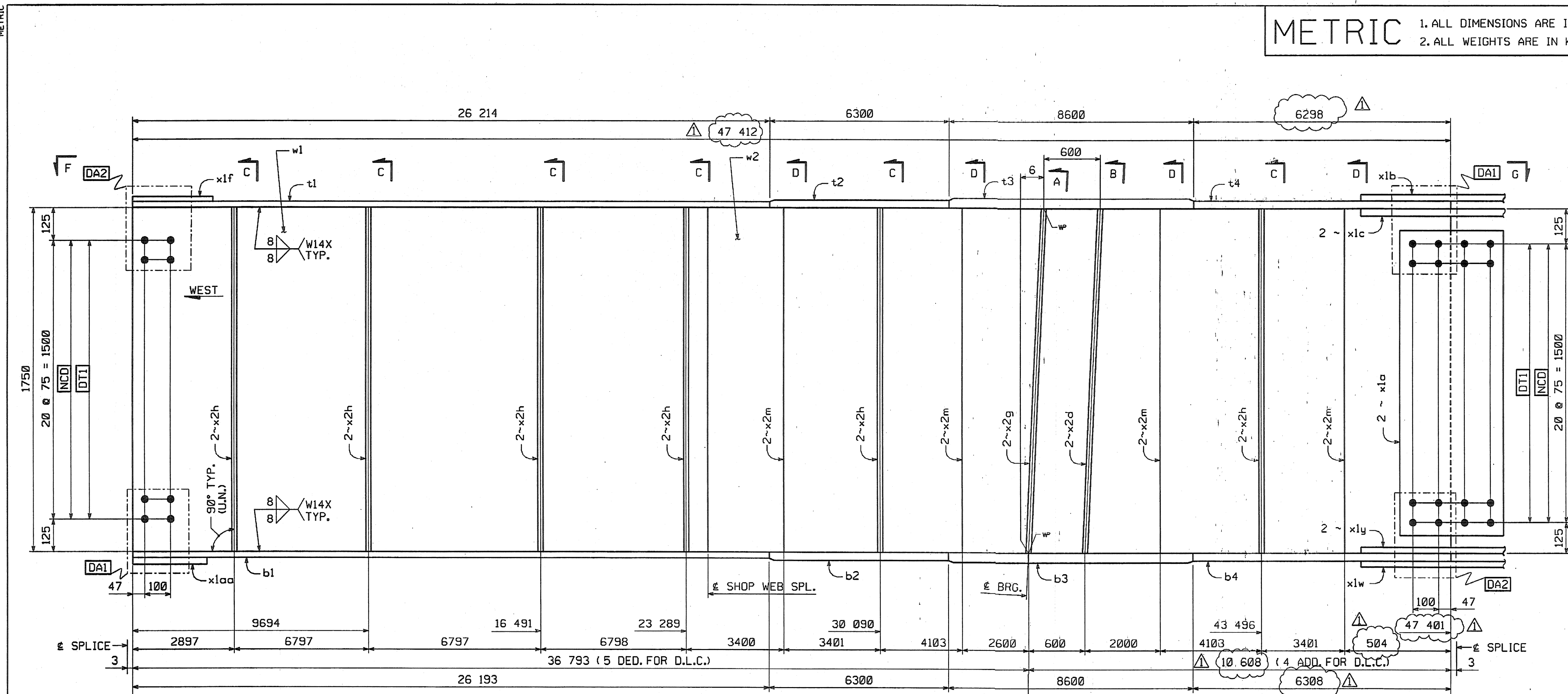
FED. ROAD DIV. NO.	STATE	FED. AID PROJ. NO.
	VT	

BILL OF MATERIAL

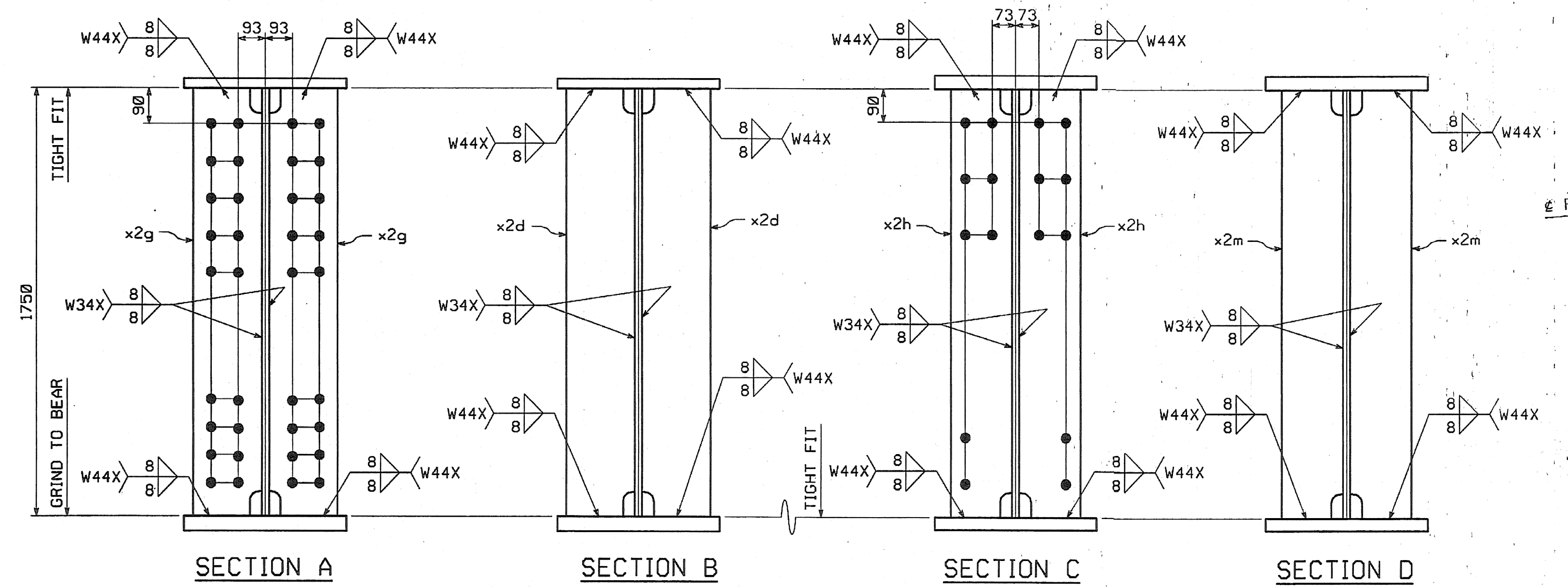
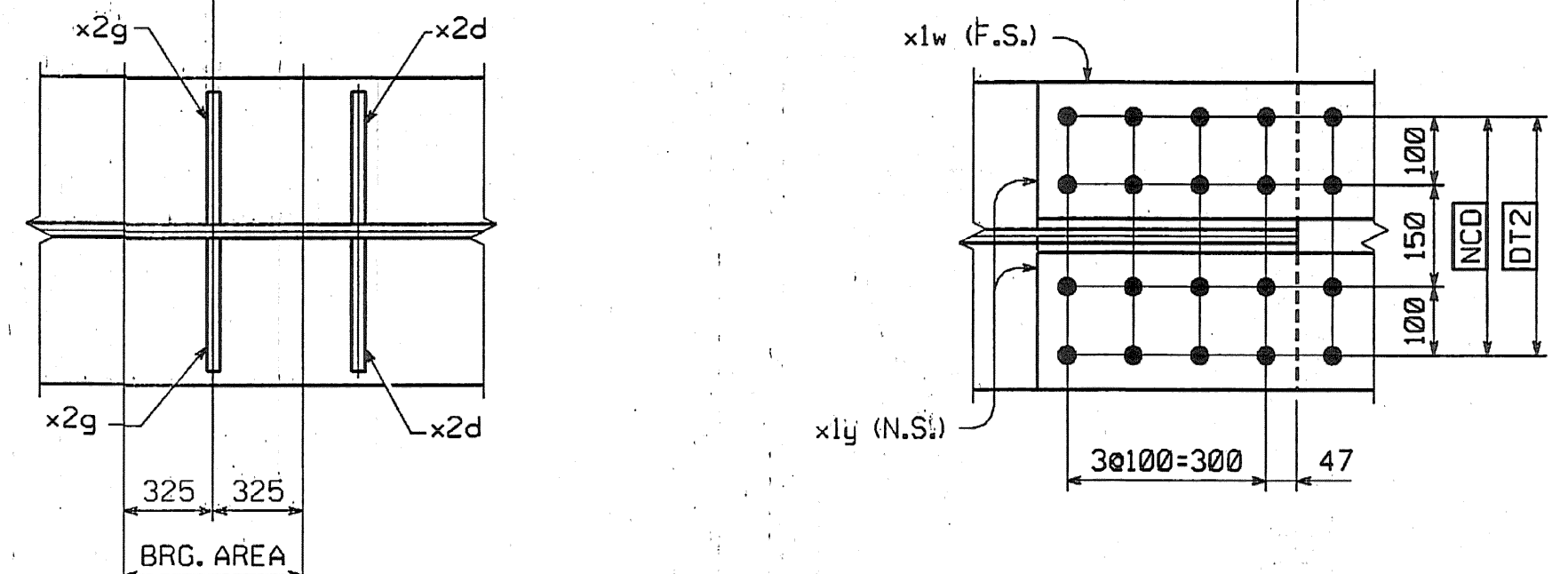
NO.	MARK	DESCRIPTION	LENGTH	REMARKS	GRP.	ITEM	SHIP. WT. KG. EA.
ONE	G6L	GIRDER					22 610
1	w1	PL 16 x 1750	23 809	(T)	3	4	5232.62
1	w2	PL 16 x 1750	23 610	(T)	4	7	5188.88
1	t1	PL 22 x 450	26 214	(T)	4	19	2036.99
1	t2	PL 32 x 450	6 300	(T)	4	15	712.07
1	t3	PL 65 x 450	8 600	(T)	4	3	1974.44
1	t4	PL 32 x 450	6 298	(T)	4	15	711.84
1	b1	PL 22 x 450	26 193	(T)	4	20	2035.36
1	b2	PL 32 x 450	6 300	(T)	4	15	712.07
1	b3	PL 65 x 450	8 600	(T)	4	3	1974.44
1	b4	PL 32 x 450	6 308	(T)	4	14	712.97
2	x1a	PL 12 x 1600	400	(T)	6	1	80.28
1	x1b	PL 14 x 450	790	(T)	6	6	39.06
2	x1c	PL 16 x 200	790	(T)	6	5	19.84
1	x1f	PL 10 x 450	392	FILL	6	7	13.85
1	x1w	PL 14 x 450	790	(T)	6	6	39.06
2	x1y	PL 16 x 200	790	(T)	6	5	19.84
1	x1aa	PL 10 x 450	392	FILL	6	7	13.85
2	x2d	PL 38 x 200	1 750		7	1	104.39
12	x2h	PL 12 x 180	1 750		7	4	29.67
8	x2m	PL 12 x 180	1 750		7	4	29.67
TOTAL WEIGHT THIS SHEET:							22 608.4 kgs

10419.95
2037.22
712.15
1974.67
711.92
2035.59
712.15
1974.67
713.06
120.58
39.06
39.69
39.07
39.69
209.81
208.81
356.09
237.38

22608.27k
JMTL
8-1-06
10/120



GIRDER ~ G6L



ORIENTATION DIAGRAM

SHOP NOTE
HOLES: 15/16"
BOLTS: NONE
PAINT: NONE
FOR GENERAL SHOP NOTES, SEE DWG. GNI.
FOR WEB CAMBER DIAGRAM, SEE DWG. WC3.

SHOP DRAWING REVIEW

REVIEWED AS REQUIRED BY THE CONSTRUCTION CONTRACT DOCUMENTS AND APPROVED, BUT ONLY FOR CONFORMANCE TO THE DESIGN CONCEPT OF THE WORK, AND SUBJECT TO FURTHER LIMITATIONS AND REQUIREMENTS COVERED IN THE CONSTRUCTION CONTRACT DOCUMENTS.

REVIEWED REJECTED REVISE AND RESUBMIT FURNISH AS CORRECTED

CORRECTIONS OR COMMENTS MADE ON THE SHOP DRAWINGS DURING THIS REVIEW DO NOT RELIEVE CONTRACTOR FROM COMPLIANCE WITH REQUIREMENTS OF THE DRAWINGS AND SPECIFICATIONS. THIS CHECK IS ONLY FOR REVIEW OF GENERAL CONFORMANCE WITH THE DESIGN CONCEPT OF THE PROJECT AND GENERAL COMPLIANCE WITH THE REGISTRATION GIVEN IN THE CONTRACT DOCUMENTS. THE CONTRACTOR IS RESPONSIBLE FOR COMPARING AND CORRELATING ALL QUANTITIES AND DIMENSIONS, SELECTING FABRICATION PROCESSES AND TECHNIQUES OF CONSTRUCTION, COORDINATING HIS WORK WITH THAT OF ALL OTHER TRADES, AND PERFORMING HIS WORK IN A SAFE AND SATISFACTORY MANNER.

Vanessa Hansen Erustlin, Inc. Job Number: 6001
Reviewed By: JMTL
Date: 11/1/04

NO.	REVISION	BY	DATE
	INCREASE LENGTHS TO SATISFY REQUIREMENTS FOR LENGTH	JSA	9/17/04
	MEAN TEMPERATURE OF 45°F		

HIGH STEEL STRUCTURES, INC.

1770 Hempstead Road
Lancaster, PA 17605-0008
Phone 717/299-5211

A Division of High Industries, Inc.

GIRDER G6L

VT 78 OVER MISSISQUOI BAY, BRIDGE NO. 2
VT 78 STA.10+970.425 TO STA.12+059.775
TOWNS OF ALBURG AND SWANTON
COUNTIES OF GRAND ISLE AND FRANKLIN
STATE OF VERMONT, AGENCY OF TRANSPORTATION

STATE CONTRACT OR REF. NO. BR-036-1(1)

CONTRACTOR CIAMBRO CORPORATION

IN CHARGE: GLIDDEN (IH) MADE BY: SES CHK'D. BY: CS DATE: 8-20-04

CONTRACT NUMBER: VT-04057-2 DRAWING NUMBER: 46 OF 112