

METRIC 1. ALL DIMENSIONS ARE IN MILLIMETERS UNLESS OTHERWISE NOTED.
2. ALL WEIGHTS ARE IN KILOGRAMS.

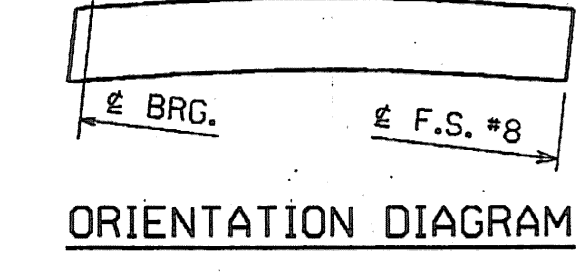
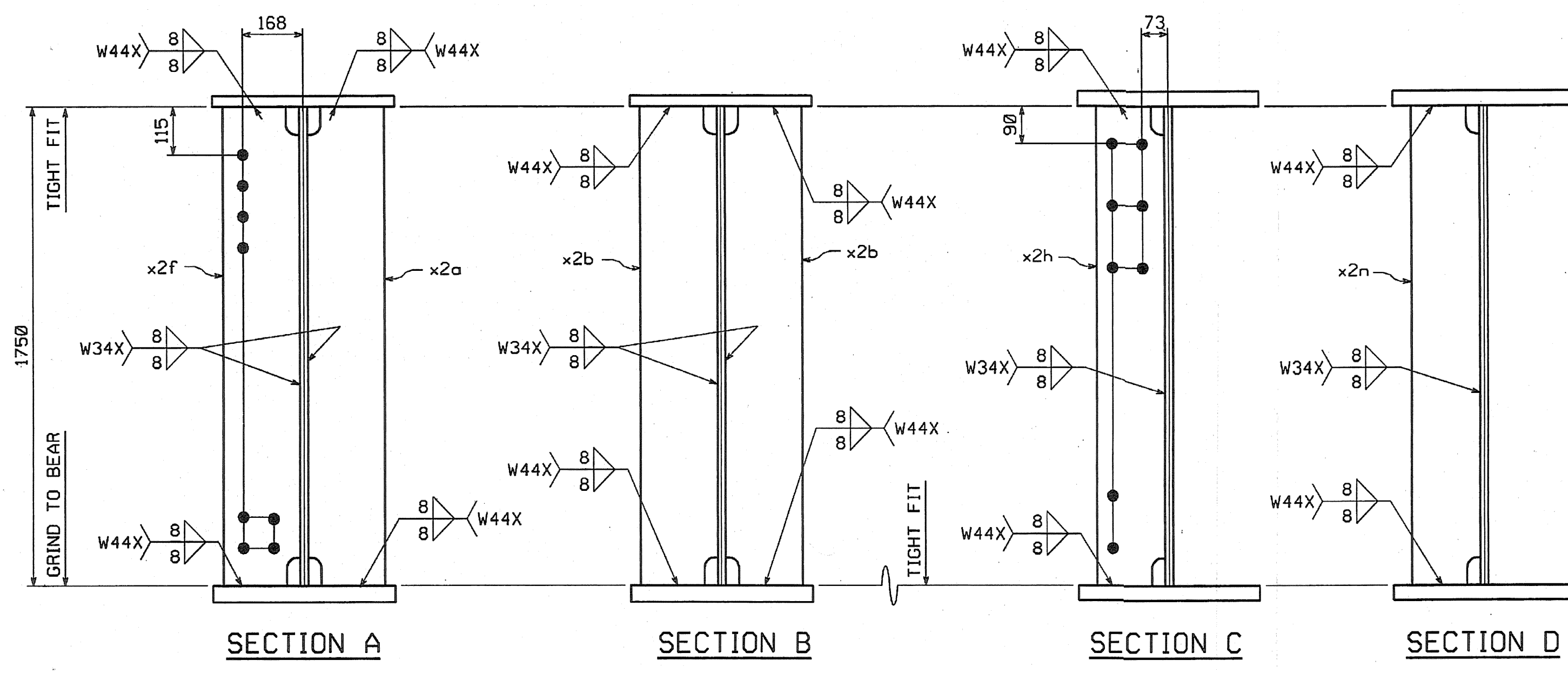
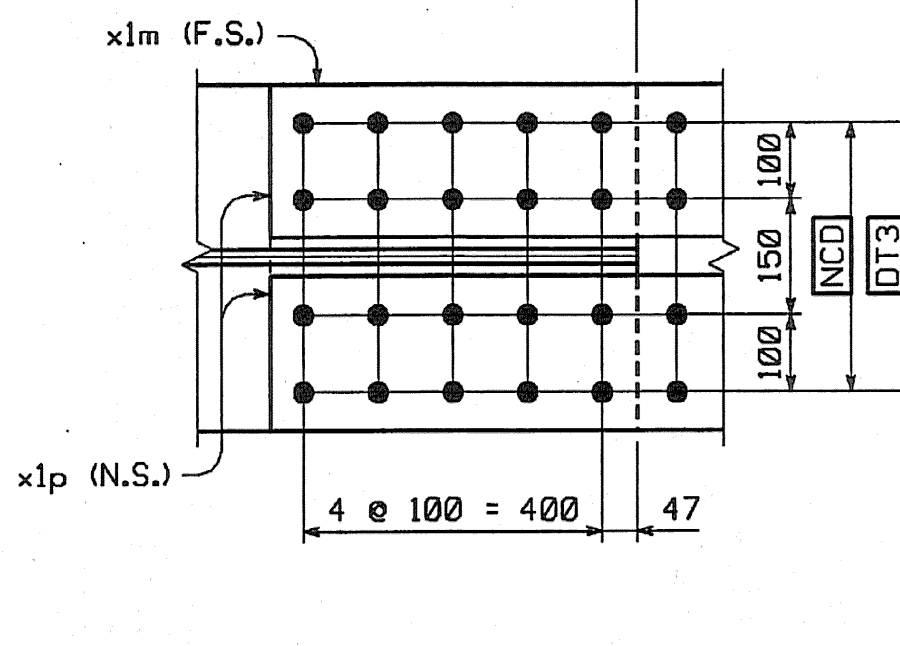
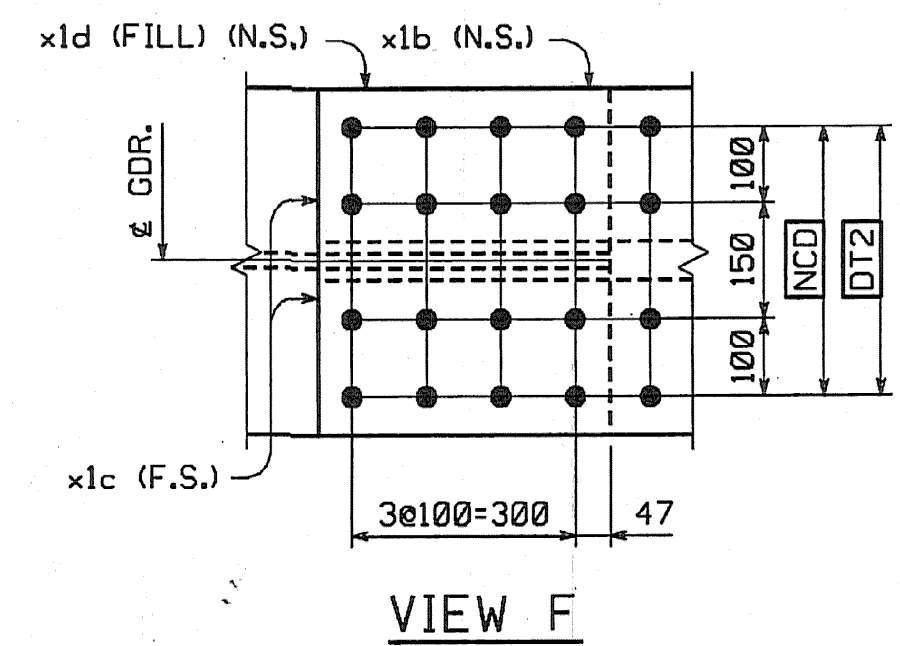
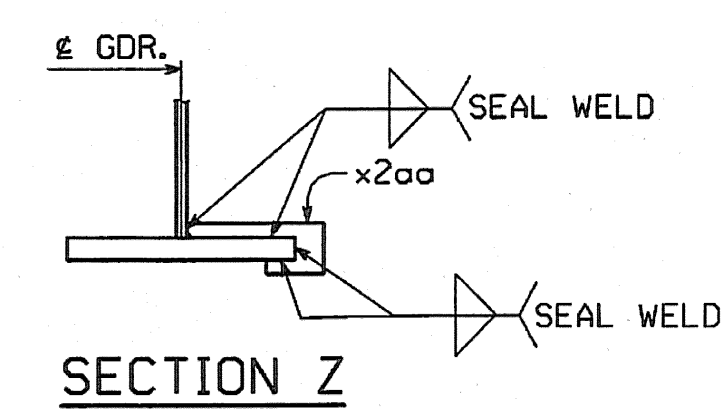
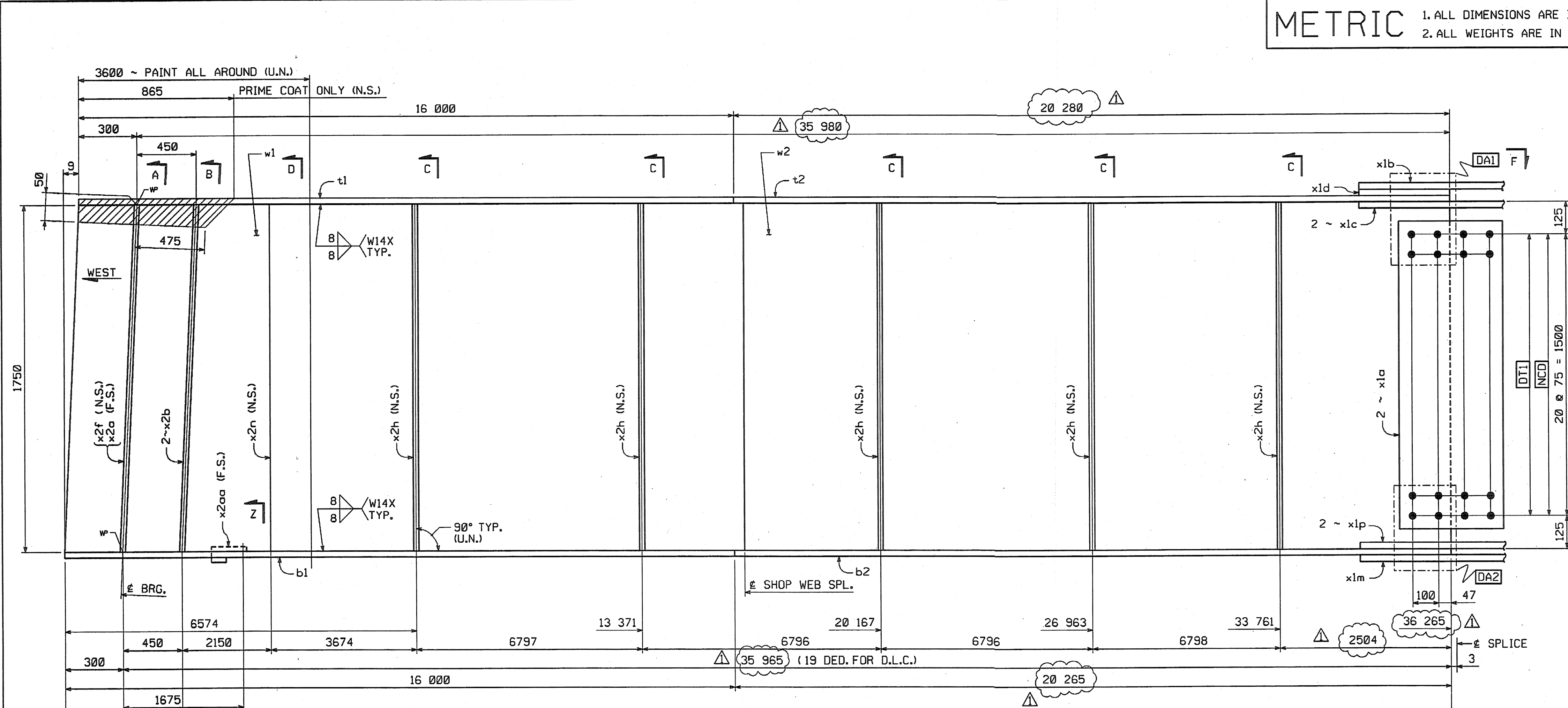
| | | |
|--------------------|-------|--------------------|
| FED. ROAD DIV. NO. | STATE | FED. AID PROJ. NO. |
| | VT | |

BILL OF MATERIAL

| NO. | MARK | DESCRIPTION | LENGTH | REMARKS | GRP. | ITEM | SHIP. WT. KG. EA. |
|-----|------|--------------|--------|-----------|------|------|-------------------|
| ONE | G51 | GIRDER | | | | | 16 700 |
| 1 | w1 | PL 16 x 1750 | 16 307 | (T) | 3 | 11 | 3583.87 |
| 1 | w2 | PL 16 x 1750 | 19 998 | (T) 36272 | 3 | 8 | 4395.06 |
| 1 | t1 | PL 22 x 450 | 16 001 | (T) 16000 | 4 | 28 | 1243.38 |
| 1 | t2 | PL 22 x 450 | 20 280 | (T) | 4 | 27 | 1575.88 |
| 1 | b1 | PL 40 x 450 | 16 004 | (T) 16000 | 4 | 5 | 2260.68 |
| 1 | b2 | PL 40 x 450 | 20 265 | (T) | 4 | 4 | 2863.12 |
| 2 | x1a | PL 12 x 1600 | 400 | (T) | 6 | 1 | 60.28 |
| 1 | x1b | PL 14 x 450 | 790 | (T) | 6 | 6 | 39.06 |
| 2 | x1c | PL 16 x 200 | 790 | (T) | 6 | 5 | 49.84 |
| 1 | x1d | PL 18 x 450 | 392 | FILL | 6 | 4 | 24.92 |
| 1 | x1m | PL 18 x 450 | 990 | (T) | 6 | 3 | 62.94 |
| 2 | x1p | PL 20 x 200 | 990 | (T) | 6 | 2 | 34.06 |
| 1 | x2a | PL 22 x 200 | 1750 | | 7 | 2 | 60.44 |
| 2 | x2b | PL 22 x 200 | 1750 | | 7 | 2 | 60.44 |
| 1 | x2f | PL 22 x 200 | 1750 | | 7 | 2 | 60.44 |
| 5 | x2h | PL 12 x 180 | 1750 | | 7 | 4 | 29.67 |
| 1 | x2n | PL 12 x 180 | 1750 | | 7 | 4 | 29.67 |
| 1 | x2aa | PL 6 x 90 | 301 | W1=72150 | 7 | 5 | 4.28 |

7972.70 ✓
1243.44 ✓
1576.06 ✓
2260.68 ✓
2863.44 ✓
120.58 ✓
39.07 ✓
39.69 ✓
24.93 ✓
62.95 ✓
34.06 ✓
60.45 ✓
120.89 ✓
60.45 ✓
148.37 ✓
0.57

TOTAL WEIGHT THIS SHEET: **46 692.36** kgs
* See Sheet 1 of 112 (16086123 kg) 7-27-06



SHOP NOTE
HOLES: 1 5/16" ø
BOLTS: NONE
PAINT: SEE DWG. GNI
FOR GENERAL SHOP NOTES, SEE DWG. GNI.
FOR WEB CAMBER DIAGRAM, SEE DWG. WCI.

SHOP DRAWING REVIEW

REVIEWED AS REQUIRED BY THE CONSTRUCTION CONTRACT DOCUMENTS AND APPROVED, BUT ONLY FOR CONFORMANCE TO THE DESIGN CONCEPT OF THE WORK, AND SUBJECT TO FURTHER LIMITATIONS AND REQUIREMENTS CONTAINED IN THE CONSTRUCTION CONTRACT DOCUMENTS.

REJECTED REVISE AND RESUBMIT PURSUE AS CORRECTED

CORRECTIONS OR COMMENTS MADE ON THE SHOP DRAWINGS DURING THIS REVIEW DO NOT RELIEVE CONTRACTOR FROM COMPLIANCE WITH REQUIREMENTS OF THE DRAWINGS AND SPECIFICATIONS. THIS CHECK IS ONLY FOR REVIEW OF GENERAL CONFORMANCE WITH THE DESIGN CONCEPT OF THE PROJECT AND GENERAL COMPLIANCE WITH THE REQUIREMENTS GIVEN IN THE CONTRACT DOCUMENTS. THE CONTRACTOR IS RESPONSIBLE FOR CORRECTING AND CORRELATING ALL QUANTITIES AND DIMENSIONS; SELECTING FABRICATION PROCESSES AND TECHNIQUES OF CONSTRUCTION; COORDINATING HIS WORK WITH THAT OF ALL OTHER TRADES; AND PERFORMING HIS WORK IN A SAFE AND SATISFACTORY MANNER.

VHIB Vanasse Hangen Brustlin, Inc.
Engineers, Planners, and Scientists
Six Bedford Farms, Kilton Rd.
Bedford, NH 03110-0001-0004-0008

Job Number: 5011
Reviewed By: ESJ
Date: 11/15/04

| △ | | | |
|--|---|-----------------|-----------|
| △ | | | |
| △ | INCREASE LENGTHS TO SATISFY REQUIREMENTS FOR LENGTH & MEAN TEMPERATURE OF 45°F. | JSA | 9/17/04 |
| NO. | REVISION | BY | DATE |
| | | | |
| | | | |
| GIRDER G51 | | | |
| VT 78 OVER MISSISQUOI BAY, BRIDGE NO. 2 | | | |
| VT 78 STA.10+970.425 TO STA.12+059.775 | | | |
| TOWNS OF ALBURG AND SWANTON | | | |
| COUNTIES OF GRAND ISLE AND FRANKLIN | | | |
| STATE OF VERMONT, AGENCY OF TRANSPORTATION | | | |
| STATE CONTRACT OR REF. NO. | BRF-036-1(1) | | |
| CONTRACTOR | CIANBRO CORPORATION | | |
| IN CHARGE: | GLIDDEN (IH) | MADE BY: | ERS |
| | | DATE: | 8-19-04 |
| CONTRACT NUMBER: | VT-04057-2 | DRAWING NUMBER: | 33 OF 112 |

METRIC
 1750
 50
 100
 16 000
 35 980
 20 280
 35 965
 20 265
 1675
 145
 250
 x2aa
 x2b
 x2f
 BRG. AREA
 325
 350
 LIGHT RUST PREVENTIVE COAT OF PRIMER BOT. OF BOT. FLG. EDGES & SHADED AREA (N.S.)
 BY: dpainter
 PLOTTED: 9/20/2004 14:53:31 PM
 60