

METRIC

1. ALL DIMENSIONS ARE IN MILLIMETERS UNLESS OTHERWISE NOTED.
2. ALL WEIGHTS ARE IN KILOGRAMS.

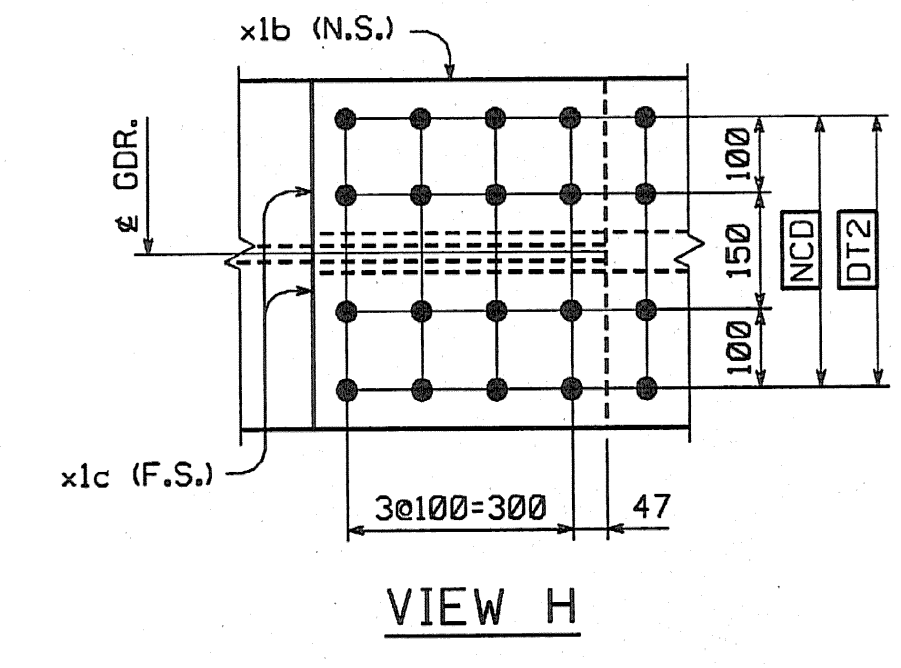
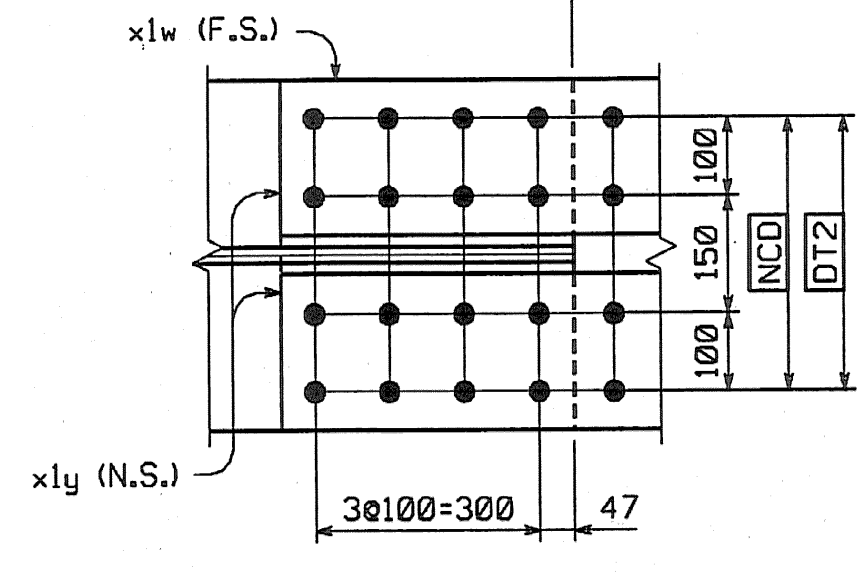
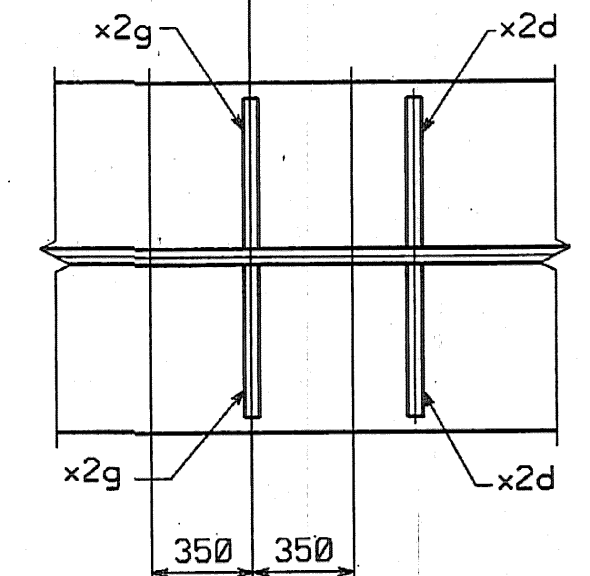
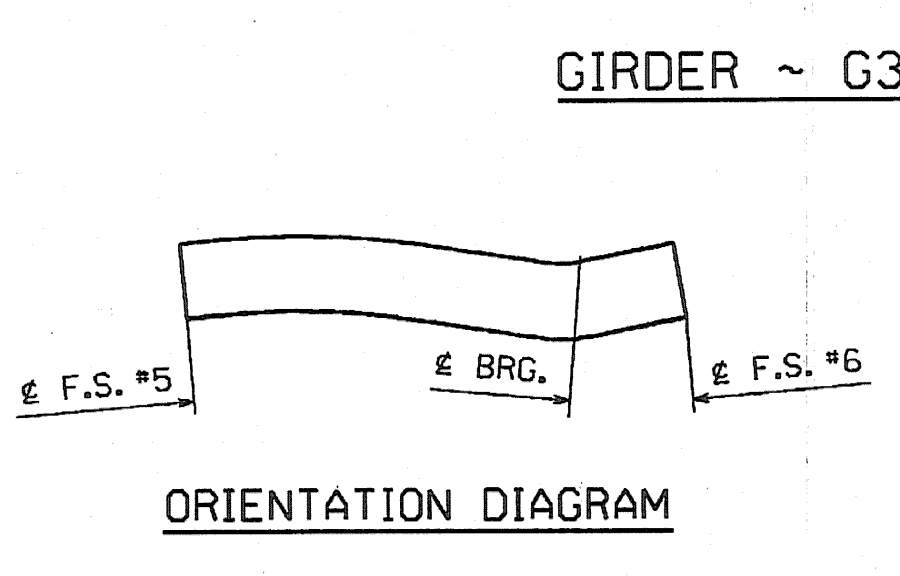
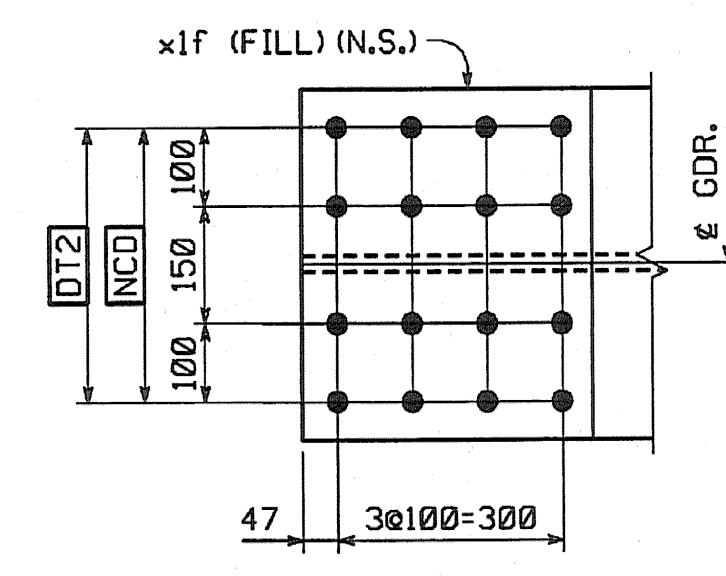
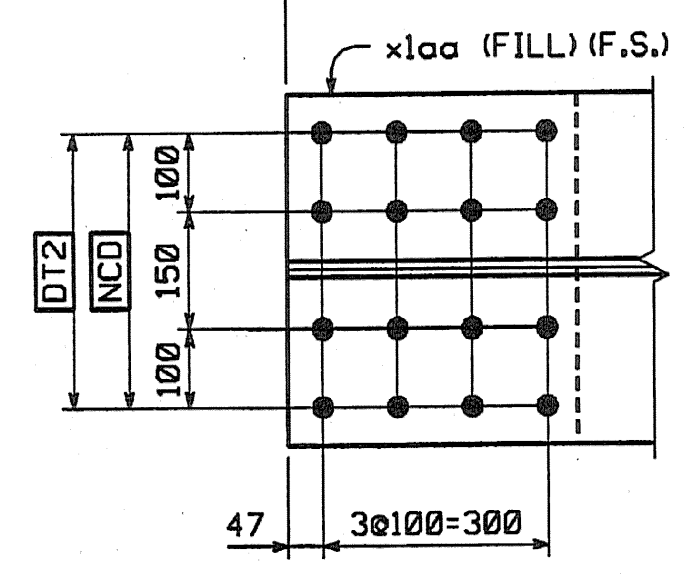
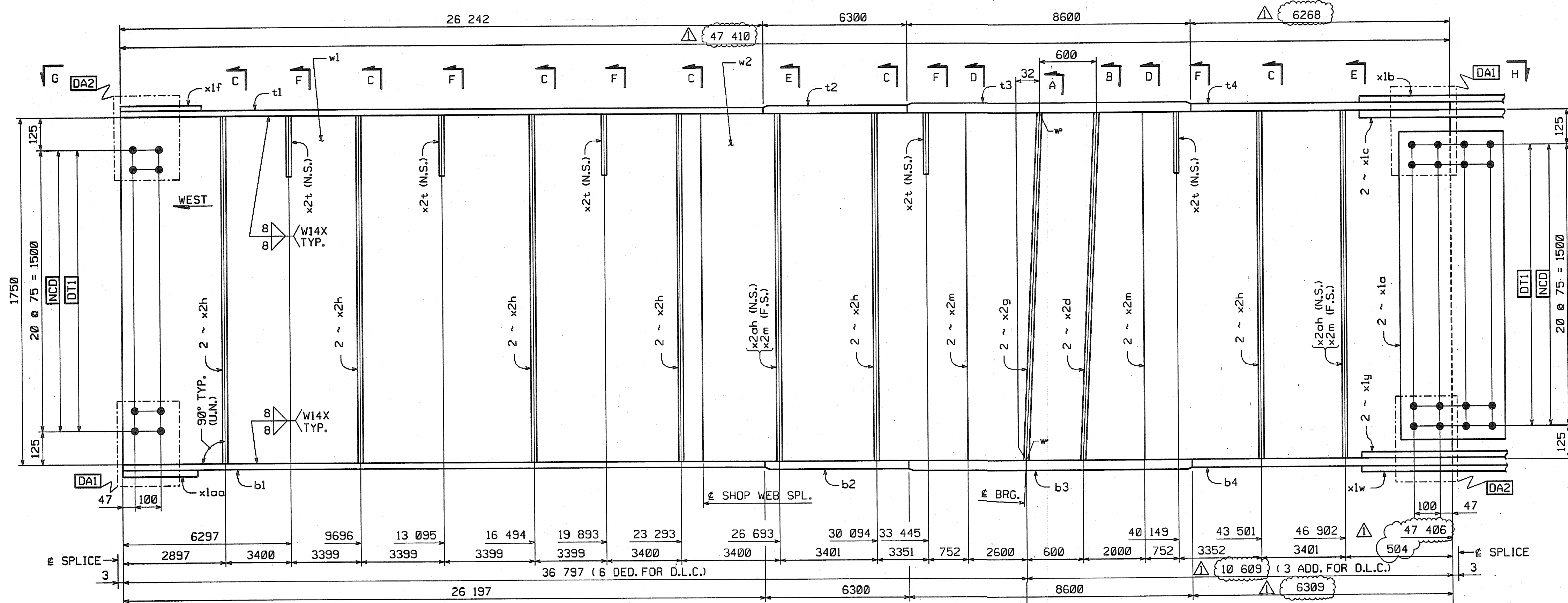
FED. ROAD DIV. NO.	STATE	FED. AID PROJ. NO.
	VT	

BILL OF MATERIAL

NO.	MARK	DESCRIPTION	LENGTH	REMARKS	GRP.	ITEM	SHIP. WT. KG. EA.
ONE	G3F	GIRDER					22 640
1	w1	PL 16 x 1750	23 812	(T)	3	4	5233.28
1	w2	PL 16 x 1750	23 609	(T) 47408	3	5	5188.66
1	t1	PL 22 x 450	26 242	(T)	4	17	2038.16
1	t2	PL 32 x 450	6 300	(T)	4	15	742.07
1	t3	PL 65 x 450	8 601	(T) 8600	4	2	1974.67
1	t4	PL 32 x 450	6 268	(T)	4	16	708.45
1	b1	PL 22 x 450	26 197	(T)	4	20	2036.67
1	b2	PL 32 x 450	6 300	(T)	4	15	742.07
1	b3	PL 65 x 450	8 601	(T) 8600	4	2	1974.67
1	b4	PL 32 x 450	6 309	(T)	4	14	749.09
2	x1a	PL 12 x 1600	400	(T)	6	1	60.28
1	x1b	PL 14 x 450	790	(T)	6	6	39.06
2	x1c	PL 16 x 200	790	(T)	6	5	19.84
1	x1f	PL 10 x 450	392	FILL	6	7	13.85
1	x1w	PL 14 x 450	790	(T)	6	6	39.06
2	x1y	PL 16 x 200	790	(T)	6	5	19.84
1	x1aa	PL 10 x 450	392	FILL	6	7	13.85
2	x2d	PL 38 x 200	1 750		7	1	104.39
2	x2g	PL 38 x 200	1 750		7	1	104.39
12	x2h	PL 12 x 180	1 750		7	4	29.67
6	x2m	PL 12 x 180	1 750		7	4	29.67
5	x2l	PL 14 x 180	310		7	3	6.13
2	x2ah	PL 12 x 180	1 750		7	4	29.67

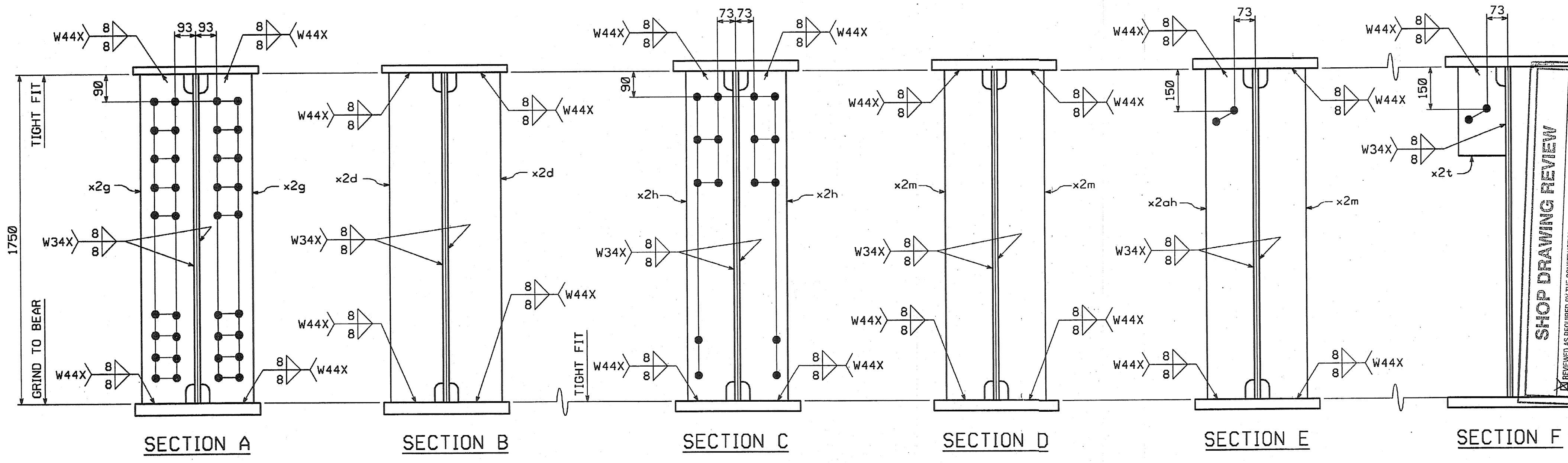
TOTAL WEIGHT THIS SHEET: 22 639.17 kgs

22641.45 kgs JMR 7-25-06



SHOP NOTE

HOLES: 1/16" ø
 BOLTS: NONE
 PAINT: NONE
 FOR GENERAL SHOP NOTES, SEE DWG. GNL.
 FOR WEB CAMBER DIAGRAM, SEE DWG. WC2.



SHOP DRAWING REVIEW

REVIEWED AS REQUIRED BY THE CONTRACT DOCUMENTS AND APPROVED, BUT ONLY FOR CONFORMANCE TO THE DESIGN CONCEPT SET FORTH IN THE CONTRACT DOCUMENTS. THIS CHECK IS ONLY FOR REVIEW OF GENERAL CONFORMANCE WITH THE CONTRACT AND DOES NOT CONSTITUTE A GUARANTEE OR ASSURANCE OF THE ACCURACY OR COMPLETENESS OF THE DRAWING OR THE DESIGN. THE CONTRACTOR IS RESPONSIBLE FOR OBTAINING ALL NECESSARY PERMITS AND FOR OBTAINING ALL NECESSARY APPROVALS FROM THE APPROPRIATE AGENCIES AND FOR OBTAINING ALL NECESSARY APPROVALS FROM THE APPROPRIATE AGENCIES.

DATE: 8/19/04

NO.	REVISION	BY	DATE
	INCREASE LENGTHS TO SATISFY REQUIREMENTS FOR LENGTH AT MEAN TEMPERATURE OF 45°F.	DP	9/17/04

CONTRACTOR: CIAMBRO CORPORATION
 IN CHARGE: GLIDDEN (IH)
 CONTRACT NUMBER: VT-04057-1

STATE CONTRACT OR REF. NO.: BRF-036-1(1)
 MADE BY: SSL
 DATE: 8-19-04
 CHECKED BY: CS
 DRAWING NUMBER: 23 OF 112

Plotted: 9/20/2004 10:54:10 PM