

METRIC

METRIC 1. ALL DIMENSIONS ARE IN MILLIMETERS UNLESS OTHERWISE NOTED.
2. ALL WEIGHTS ARE IN KILOGRAMS.

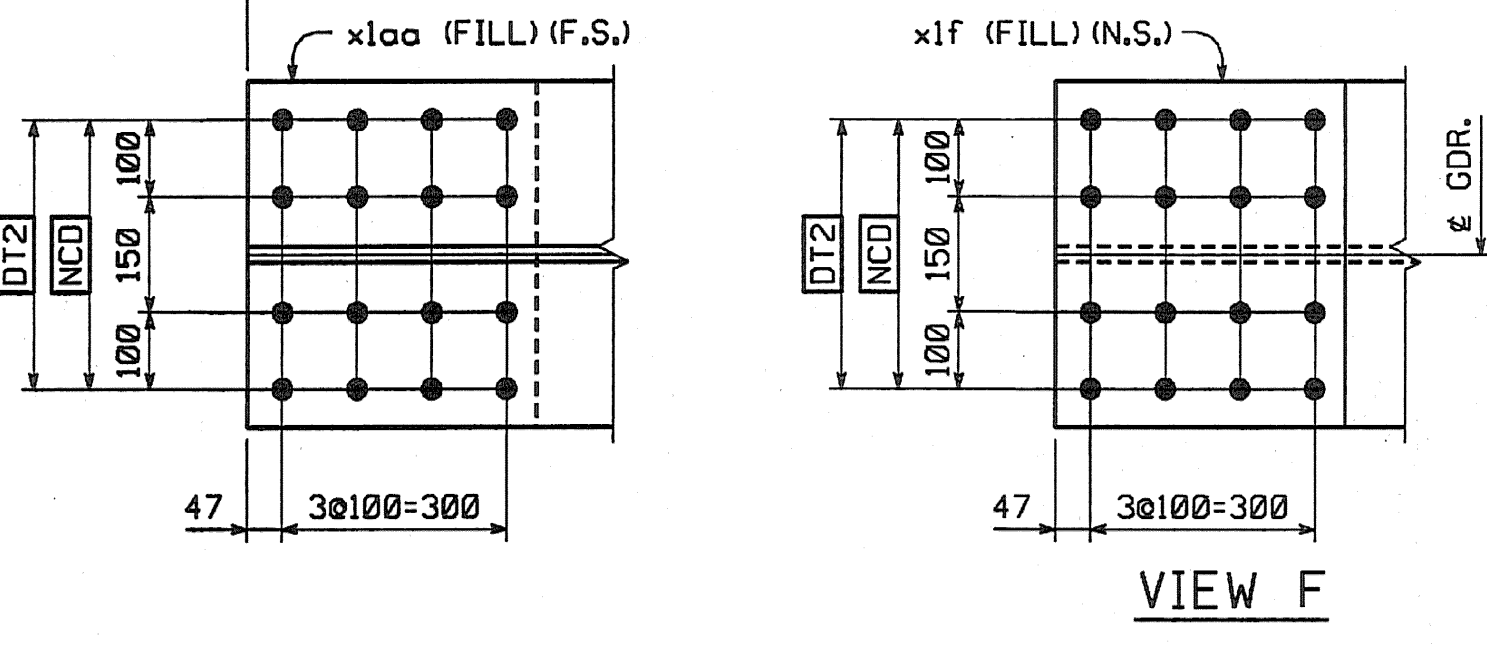
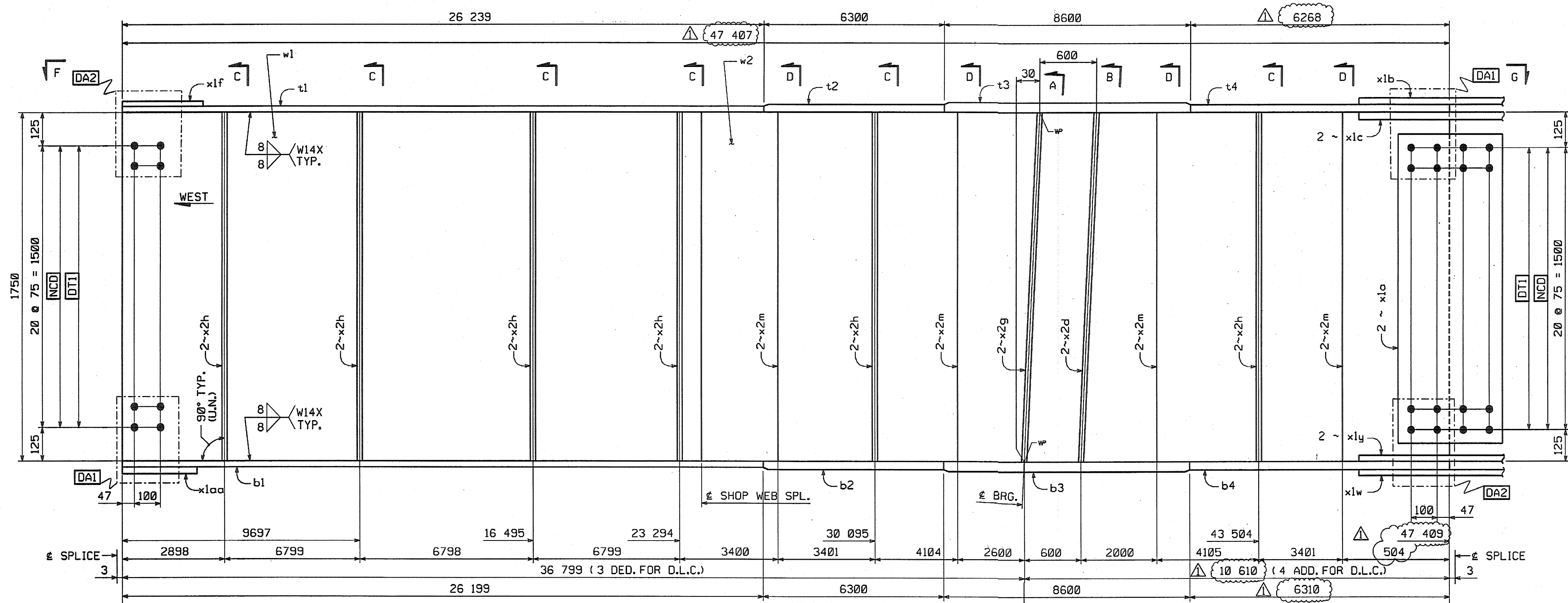
FED. ROAD DIV. NO.	STATE	FED. AID PROJ. NO.
	VT	

BILL OF MATERIAL

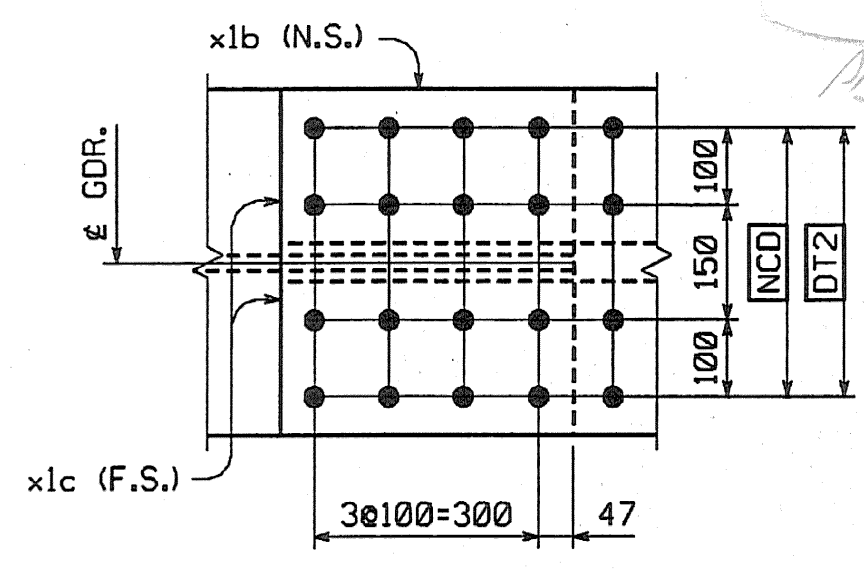
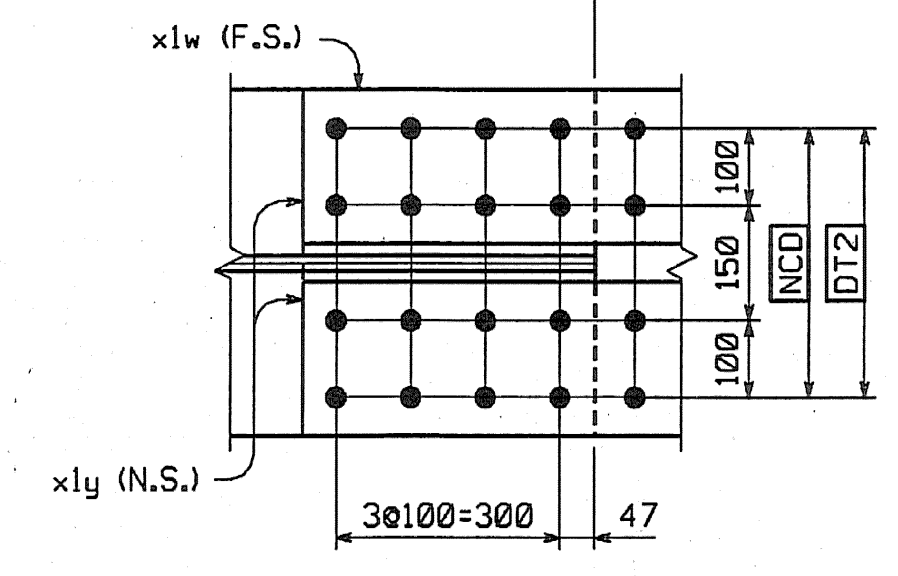
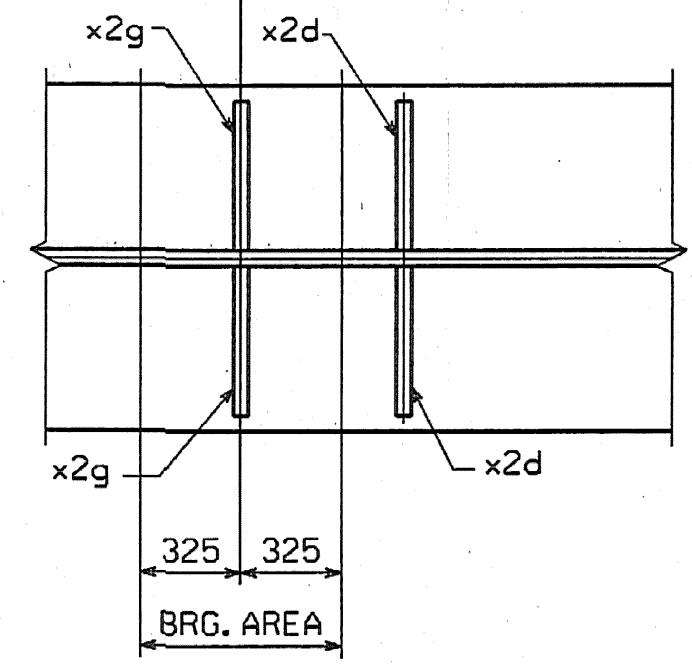
NO.	MARK	DESCRIPTION	LENGTH	REMARKS	GRP.	ITEM	SHIP. WT. KG. EA.
ONE	G2E	GIRDER					22 610
1	w1	PL 16 x 1750	23 810	(T)	3	6	5232.84
1	w2	PL 16 x 1750	23 609	(T) 47408 ✓	3	2	5188.66
1	t1	PL 22 x 450	26 239	(T)	4	18	2038.93
1	t2	PL 32 x 450	6 300	(T)	4	15	712.07
1	t3	PL 65 x 450	8 600	(T)	4	3	1974.44
1	t4	PL 32 x 450	6 269	(T) 6268 ✓	4	16	798.57
1	b1	PL 22 x 450	26 199	(T)	4	20	2035.82
1	b2	PL 32 x 450	6 300	(T)	4	15	712.07
1	b3	PL 65 x 450	8 600	(T)	4	3	1974.44
1	b4	PL 32 x 450	6 310	(T) 6310 ✓	4	14	743.31
2	x1a	PL 12 x 1600	400	(T)	6	1	60.28
1	x1b	PL 14 x 450	790	(T)	6	6	39.06
2	x1c	PL 16 x 200	790	(T)	6	5	49.84
1	x1f	PL 10 x 450	392	FILL	6	7	13.85
1	x1w	PL 14 x 450	790	(T)	6	6	39.06
2	x1y	PL 16 x 200	790	(T)	6	5	49.84
1	x1aa	PL 10 x 450	392	FILL	6	7	13.85
2	x2d	PL 38 x 200	1 750		7	1	104.39
2	x2g	PL 38 x 200	1 750		7	1	104.39
12	x2h	PL 12 x 180	1 750		7	4	29.67
8	x2m	PL 12 x 180	1 750		7	4	29.67

TOTAL WEIGHT THIS SHEET: 22 607.87 kgs

22608.05 kg
 22 607.87 kg
 11/08-01-06



GIRDER ~ G2E



VIEW G

SHOP DRAWING REVIEW

REMOVED AS REQUIRED BY THE CONSTRUCTION CONTRACT DOCUMENTS AND APPROVED, BUT ONLY FOR CONFORMANCE TO THE DESIGN CONCEPT OF THE WORK, AND SUBJECT TO FURTHER LIMITATIONS AND REQUIREMENTS CONTAINED IN THE CONSTRUCTION CONTRACT DOCUMENTS.

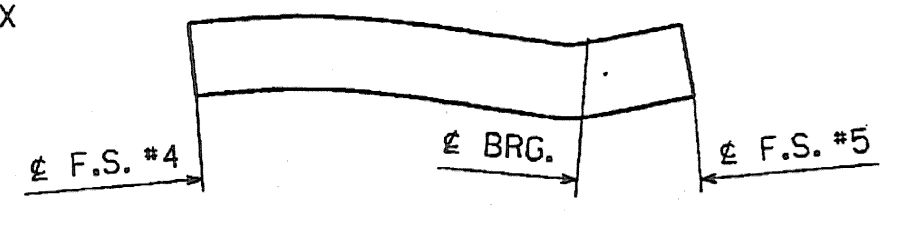
REJECTED REUSE AND RECUR FURNISH AS CORRECTED

CORRECTIONS OR COMMENTS MADE ON THE SHOP DRAWING DURING THIS REVIEW DO NOT RELIEVE CONTRACTOR FROM COMPLIANCE WITH REQUIREMENTS OF THE DRAWINGS AND SPECIFICATIONS. THIS CHECK IS ONLY FOR REVIEW OF GENERAL CONFORMANCE WITH THE DESIGN CONCEPT OF THE PROJECT AND GENERAL CORRELATION WITH THE INFORMATION GIVEN IN THE CONTRACT DOCUMENTS. THE CONTRACTOR IS RESPONSIBLE FOR OBSERVING AND CORRECTING ALL DIMENSIONS AND WORKING DETAILS FROM THE DRAWINGS AND TECHNICAL SPECIFICATIONS, COORDINATING HIS WORK WITH THAT OF ALL OTHER TRADES.

Yanasee Henzen Stuetlin, Inc.
 Job Number: 50411
 Reviewed by: [Signature]
 Date: 11/2/04

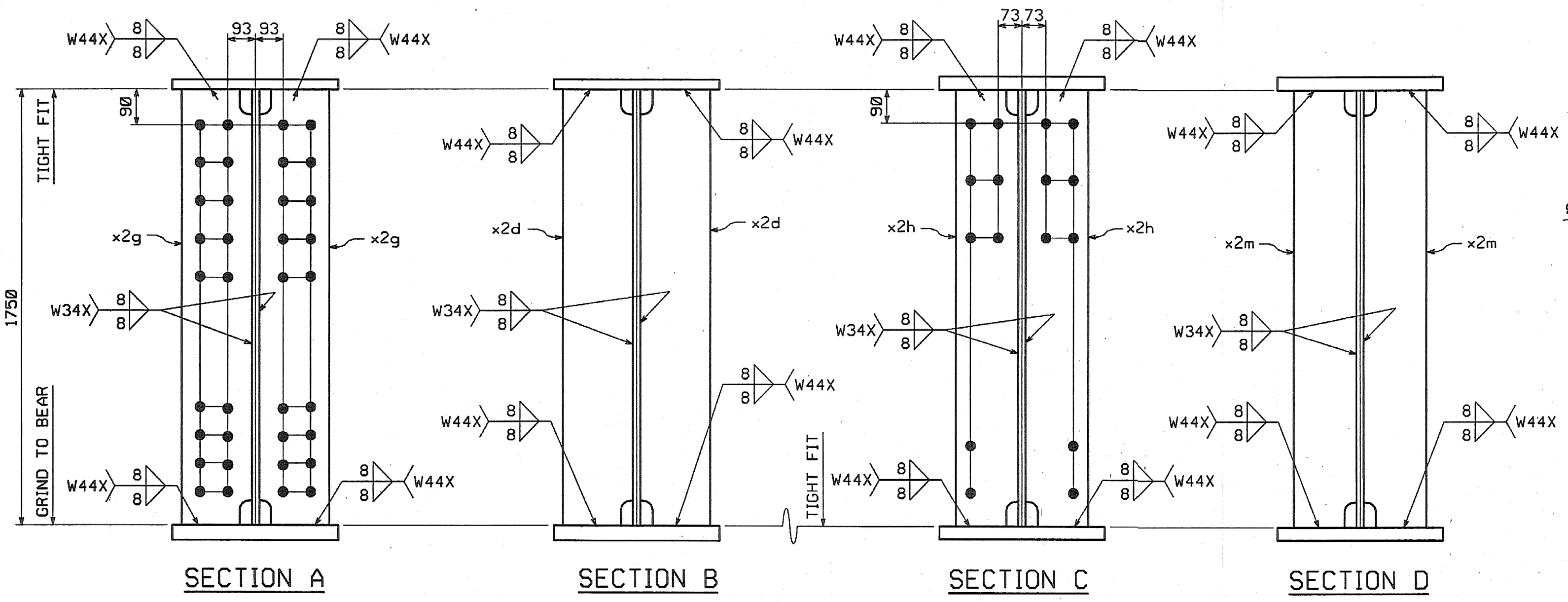
NO.	REVISION	BY	DATE
1770 Hempstead Road Lancaster, PA 17605-0008 HIGH STEEL STRUCTURES, INC. A Division of High Industries, Inc.			
GIRDER		G2E	
VT 78 OVER MISSISSQUOI BAY, BRIDGE NO. 2			
VT 78 STA.10+970.425 TO STA.12+059.775			
TOWNS OF ALBURG AND SWANTON			
COUNTIES OF GRAND ISLE AND FRANKLIN			
STATE OF VERMONT, AGENCY OF TRANSPORTATION			
STATE CONTRACT OR REF. NO.	BRF-036-111		
CONTRACTOR	CIAMBRO CORPORATION		
IN CHARGE:	CLADDEN (IH)	MADE BY:	ERS
CHK'D. BY:	CS	DATE:	8-19-04
CONTRACT NUMBER:	VT-04057-1		DRAWING NUMBER:
			18 OF 112

ORIENTATION DIAGRAM



SHOP NOTE

HOLES: 1 5/16" ø
BOLTS: NONE
PAINT: NONE
 FOR GENERAL SHOP NOTES, SEE DWG. G.N1.
 FOR WEB CAMBER DIAGRAM, SEE DWG. WC2.



BY: dpcunter
 PLOTTED: 9/28/2004 10:45:56 PM

CODE:30