

METRIC

METRIC

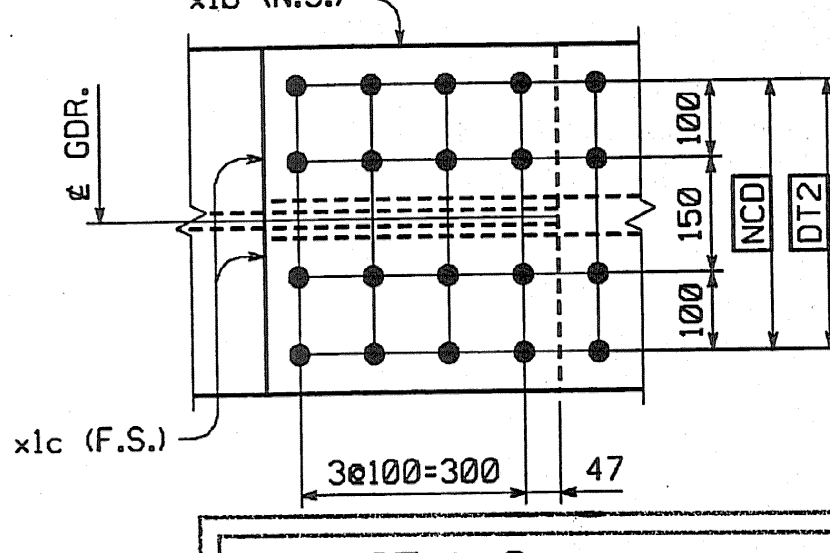
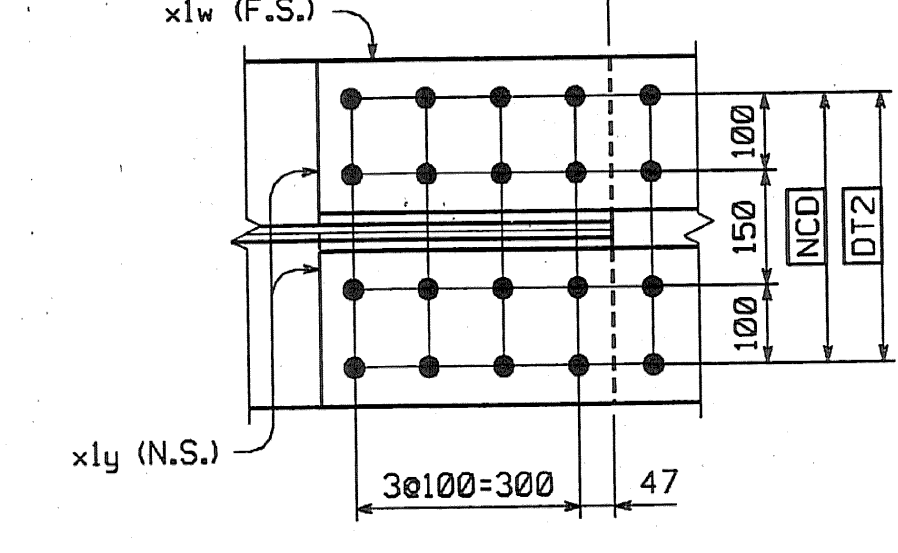
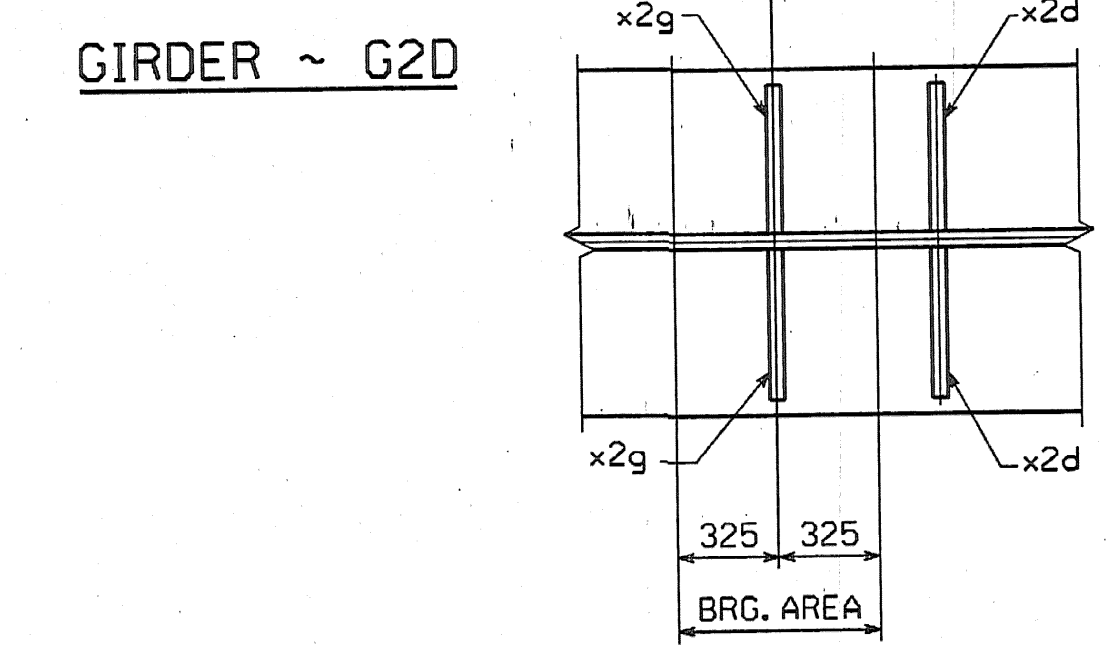
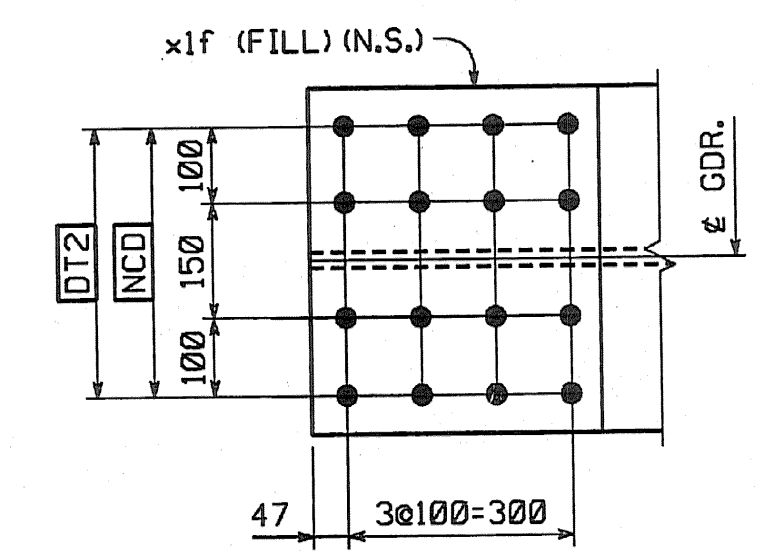
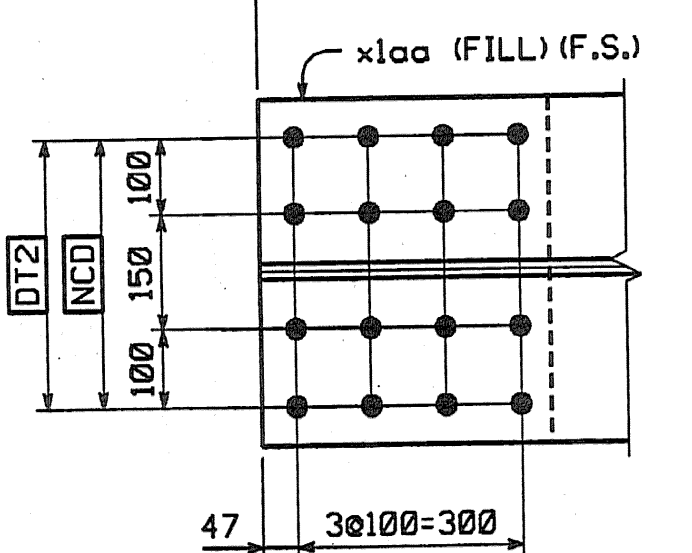
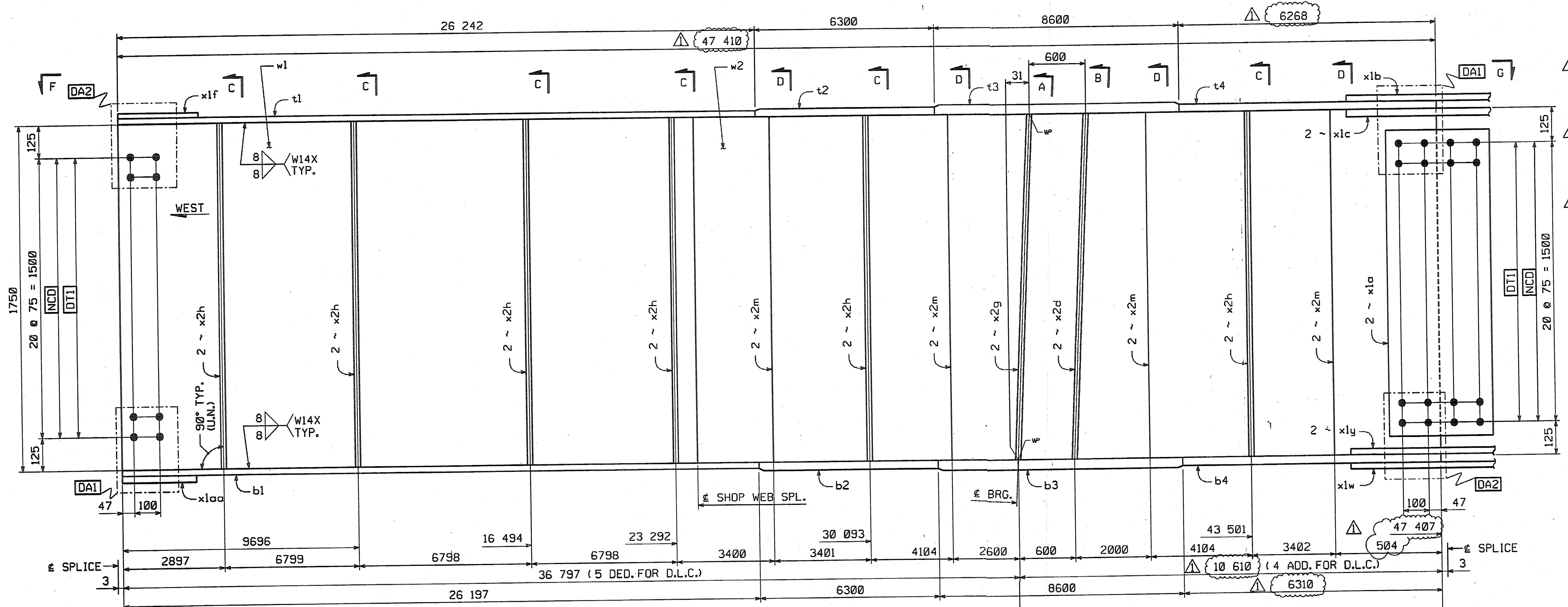
1. ALL DIMENSIONS ARE IN MILLIMETERS UNLESS OTHERWISE NOTED.  
2. ALL WEIGHTS ARE IN KILOGRAMS.

FED. ROAD DIV. NO.	STATE	FED. AID PROJ. NO.
	VT	

BILL OF MATERIAL

NO.	MARK	DESCRIPTION	LENGTH	REMARKS	GRP.	ITEM	SHIP. WT. KG. EA.
ONE	G2D	GIRDER					22 610
1	w1	PL 16 x 1750	23 613	(T)	3	4	5233.50
1	w2	PL 16 x 1750	23 610	(T) 47408	3	2	5188.88
1	t1	PL 22 x 450	26 242	(T)	4	17	2039.16
1	t2	PL 32 x 450	6 300	(T)	4	15	712.07
1	t3	PL 65 x 450	8 601	(T) 8000	4	2	1974.67
1	t4	PL 32 x 450	6 268	(T)	4	16	708.45
1	b1	PL 22 x 450	26 197	(T)	4	20	2035.67
1	b2	PL 32 x 450	6 300	(T)	4	15	712.07
1	b3	PL 65 x 450	8 601	(T) 8000	4	2	1974.67
1	b4	PL 32 x 450	6 310	(T)	4	14	713.20
2	x1a	PL 12 x 1600	400	(T)	6	1	66.28
1	x1b	PL 14 x 450	790	(T)	6	6	99.06
2	x1c	PL 16 x 200	790	(T)	6	5	19.84
1	x1f	PL 10 x 450	392	FILL	6	7	13.85
1	x1w	PL 14 x 450	790	(T)	6	6	99.06
2	x1y	PL 16 x 200	790	(T)	6	5	19.84
1	x1aa	PL 10 x 450	392	FILL	6	7	13.85
2	x2d	PL 38 x 200	1 750		7	1	104.39
2	x2g	PL 38 x 200	1 750		7	1	104.39
12	x2h	PL 12 x 180	1 750		7	4	28.67
8	x2m	PL 12 x 180	1 750		7	4	28.67
<b>TOTAL WEIGHT THIS SHEET:</b>							<b>22 609.06</b> kgs

10420.40  
2039.40  
712.15  
1974.67  
708.53  
2035.67  
712.15  
1974.67  
713.20  
120.58  
39.07  
39.69  
39.07  
39.64  
208.81  
208.81  
356.03  
237.33



**VIEW DRAWING REVIEW**

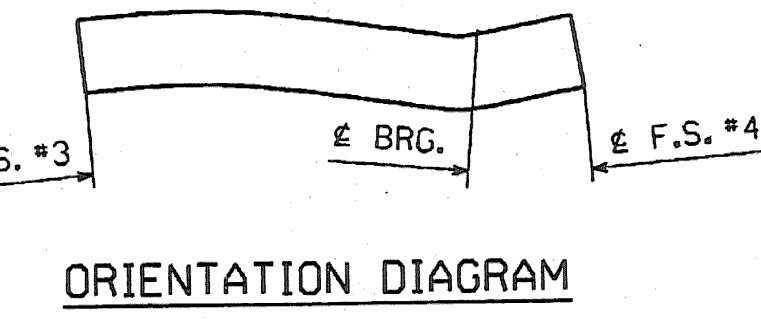
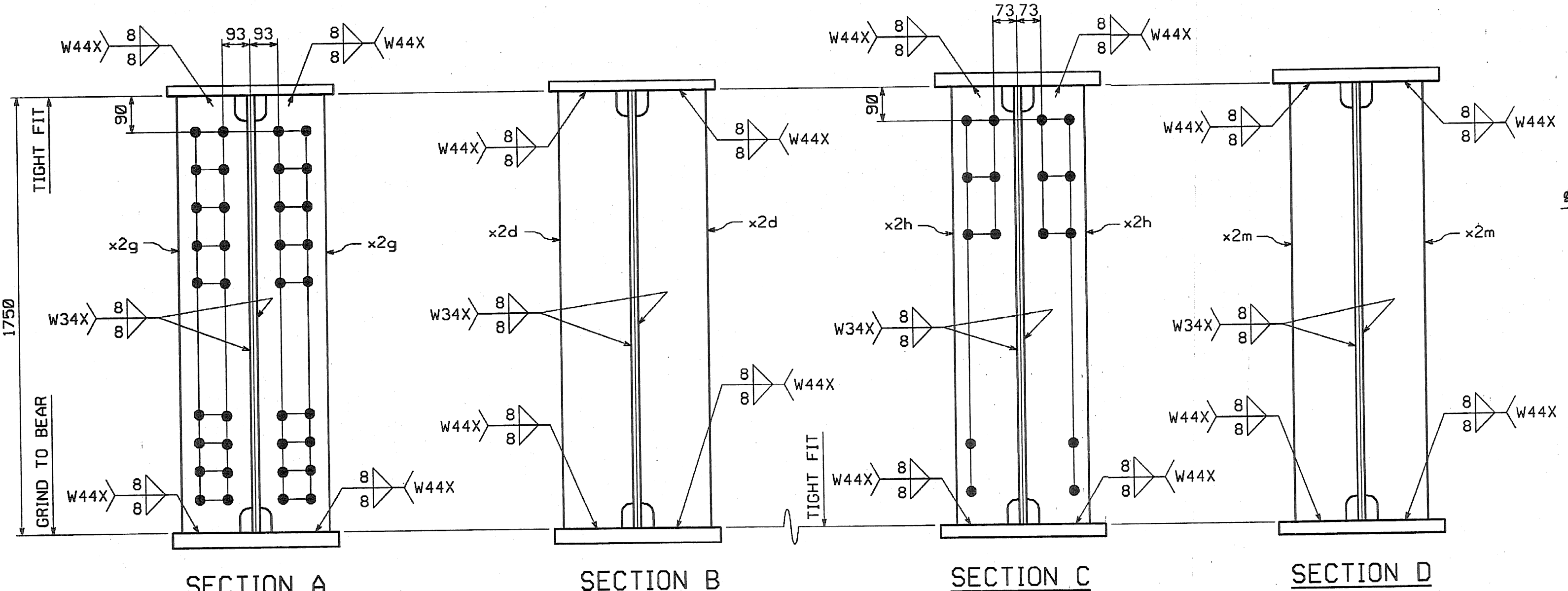
REMOVED AS REQUIRED BY THE CONSTRUCTION CONTRACT DOCUMENTS AND APPROVED, BUT ONLY FOR CONFORMANCE TO THE DESIGN CONCEPT OF THE WORK, AND SUBJECT TO FURTHER LIMITATIONS AND REQUIREMENTS CONTAINED IN THE CONSTRUCTION CONTRACT DOCUMENTS.

REJECTED  REVISE AND RESUBMIT  FURNISH AS CORRECTED

CORRECTIONS OR COMMENTS MADE ON THE SHOP DRAWINGS DURING THIS REVIEW DO NOT RELIEVE CONTRACTOR FROM COMPLIANCE WITH REQUIREMENTS OF THE DRAWINGS AND SPECIFICATIONS. THIS CHECK IS ONLY FOR REVIEW OF GENERAL CONFORMANCE WITH THE DESIGN CONCEPT OF THE PROJECT AND GENERAL COMPLIANCE WITH THE INFORMATION GIVEN IN THE CONTRACT DOCUMENTS. THE CONTRACTOR IS RESPONSIBLE FOR CONSTRUCTING AND CORRECTING ALL QUANTITIES AND DIMENSIONS, SELECTING FABRICATION PROCESS AND TECHNIQUES OF CONSTRUCTION, COORDINATING HIS WORK WITH THAT OF ALL OTHER TRADES, AND PERFORMING HIS WORK IN A SAFE AND SATISFACTORY MANNER.

VHSD Vanasse Hangen Brustlin, Inc.  
Engineers, Planners, and Scientists  
Bedford, NH 03102, 603 644 0988

Job Number: 30211  
Reviewed By: [Signature]  
Date: 11/1/04



**SHOP NOTE**

HOLES: 15/16" Ø  
BOLTS: NONE  
PAINT: NONE  
FOR GENERAL SHOP NOTES, SEE DWG. GN1.  
FOR WEB CAMBER DIAGRAM, SEE DWG. WC2.

**REVISION**

NO.	REVISION	BY	DATE
1	INCREASE LENGTHS TO SATISFY REQUIREMENTS FOR LENGTH & MEAN TEMPERATURE OF 48°F.	DP	9/17/04

**HIGH STEEL STRUCTURES, INC.**  
1770 Mainstreet Road  
Lancaster, PA 17605-0008  
Phone 717/299-5211  
A Division of High Industries, Inc.

**GIRDER G2D**

VT 78 OVER MISSISSQUOI BAY, BRIDGE NO. 2  
VT 78 STA.10+970.425 TO STA.12+059.775  
TOWNS OF ALBURG AND SWANTON  
COUNTIES OF GRAND ISLE AND FRANKLIN  
STATE OF VERMONT, AGENCY OF TRANSPORTATION

STATE CONTRACT OR REF. NO. BRF-036-1(1)

CONTRACTOR: CIAMBRO CORPORATION  
IN CHARGE: GLIDDEN (IH) MADE BY: SSI  
DATE: 8-18-04

CONTRACT NUMBER: VT-04057-1  
DRAWING NUMBER: 14 OF 112

BY: dpoanier  
PLOTTER: 9/20/2004 10:45 PM

CODE:30