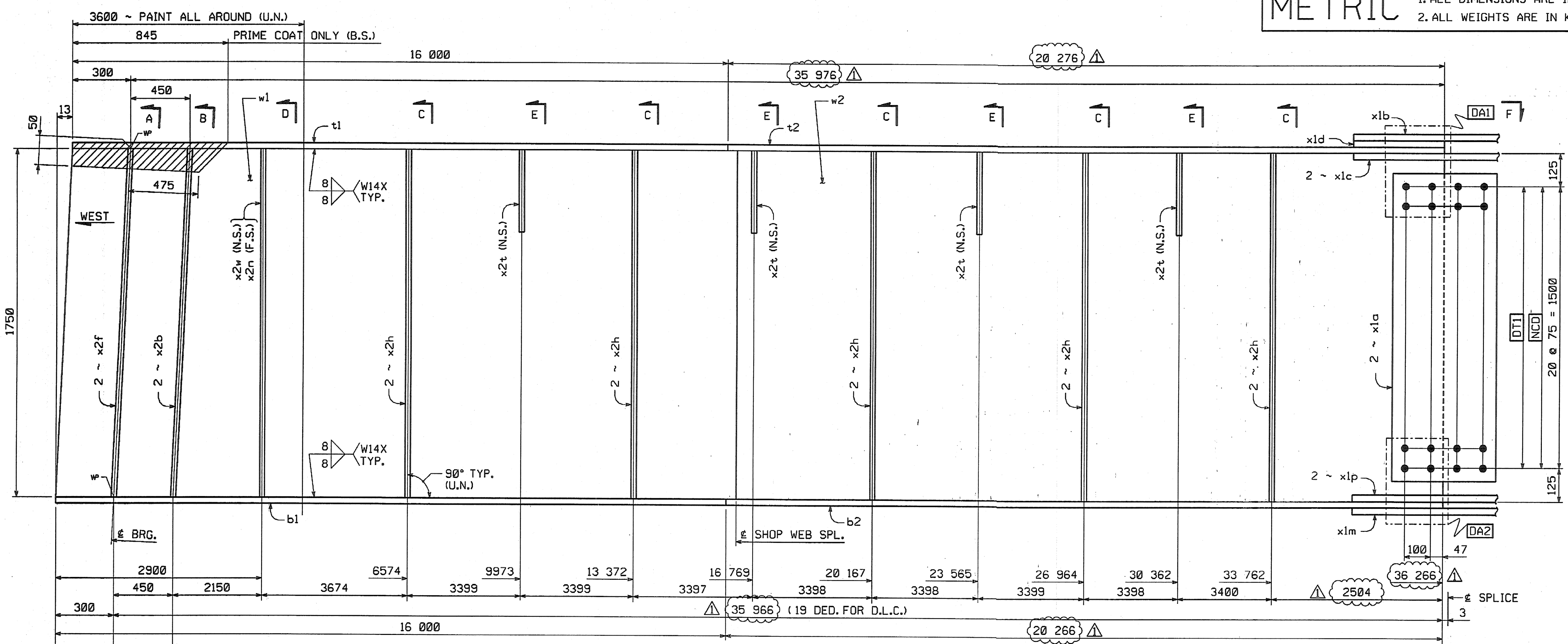


METRIC

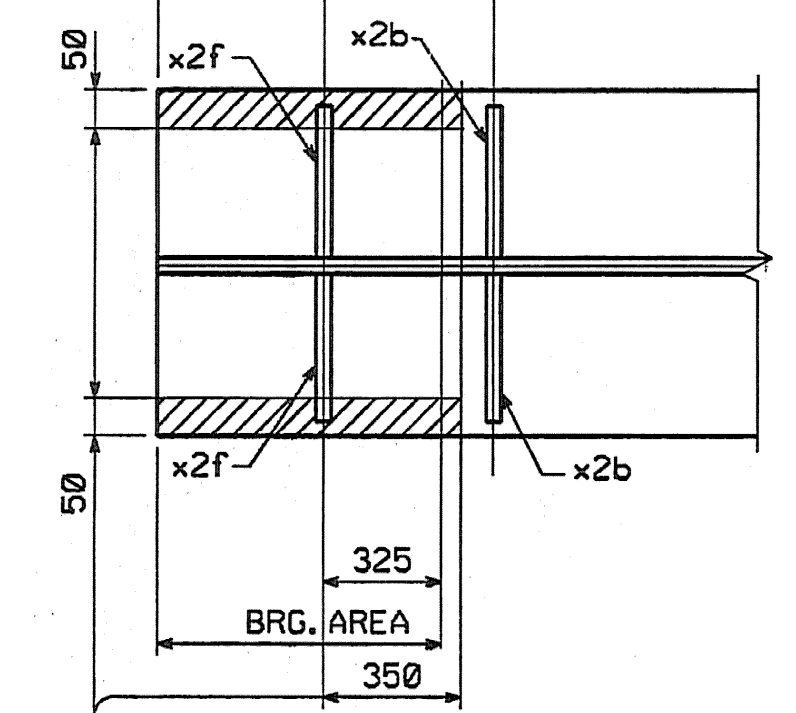
METRIC 1. ALL DIMENSIONS ARE IN MILLIMETERS UNLESS OTHERWISE NOTED. 2. ALL WEIGHTS ARE IN KILOGRAMS.

FED. ROAD DIV. NO.	STATE	FED. AID PROJ. NO.
	VT	

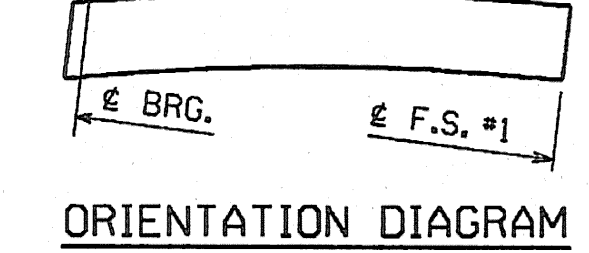
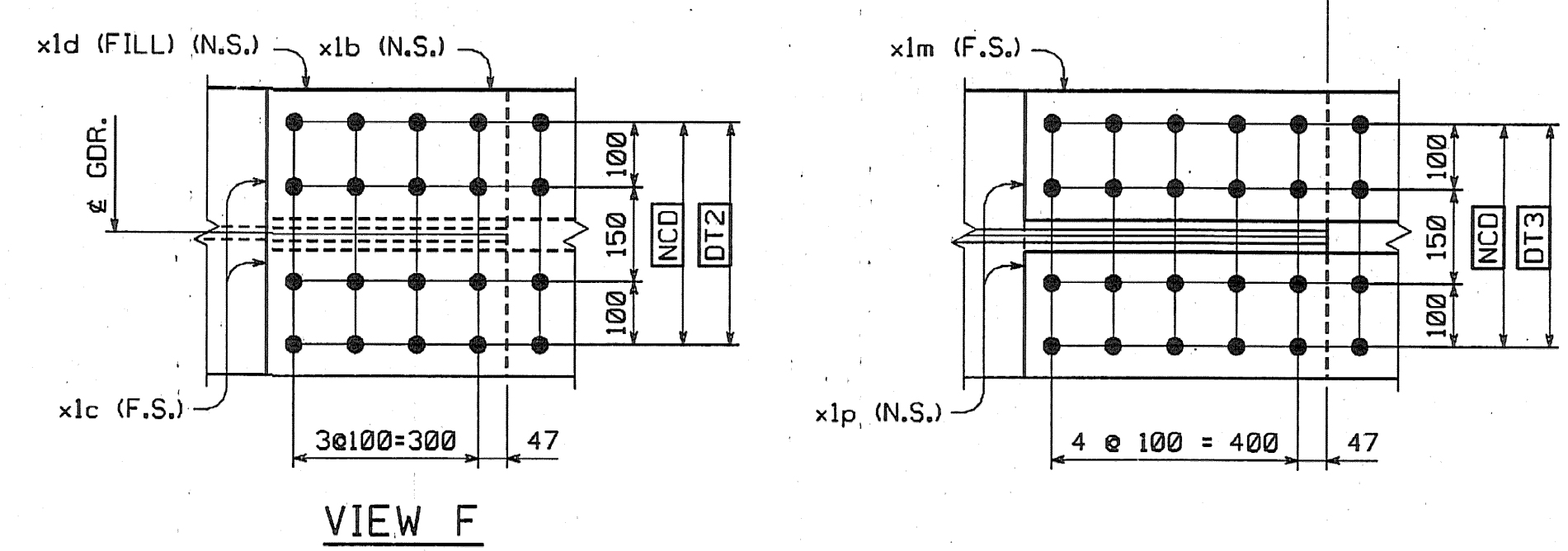


BILL OF MATERIAL									
NO.	MARK	DESCRIPTION	LENGTH	REMARKS	GRP.	ITEM	SHIP. WT. KG. EA.		
								16 900	
1	w1	PL 16 x	1750	16-307 (T) 16000	3	11	3589.87	3576.80	✓
1	w2	PL 16 x	1750	19-999 (T) 20281	3	8	4395.28	4455.57	✓
1	t1	PL 22 x	450	16-004 (T) 16000	4	28	1243.38	1243.44	✓
1	t2	PL 22 x	450	20-277 (T) 20276	4	27	1575.65	1575.83	✓
1	b1	PL 40 x	450	16-001 (T) 16000	4	5	2266.68	2260.80	✓
1	b2	PL 40 x	450	20-267 (T) 20266	4	4	2863.40	2863.59	✓
2	x1a	PL 12 x	1600	400 (T)	6	1	80.28	120.58	✓
1	x1b	PL 14 x	450	790 (T)	6	6	39.96	39.07	✓
2	x1c	PL 16 x	200	790 (T)	6	5	19.84	39.69	✓
1	x1d	PL 18 x	450	392 FILL	6	4	24.92	24.73	✓
1	x1m	PL 18 x	450	990 (T)	6	3	62.94	62.95	✓
2	x1p	PL 20 x	200	990 (T)	6	2	31.08	62.17	✓
2	x2b	PL 22 x	200	1750	7	2	86.44	120.89	✓
2	x2f	PL 22 x	200	1750	7	2	86.44	120.89	✓
10	x2h	PL 12 x	180	1750	7	4	29.67	296.73	✓
1	x2n	PL 12 x	180	1750	7	4	29.67	29.67	✓
4	x2t	PL 14 x	180	310	7	3	6.43	24.53	✓
1	x2w	PL 12 x	180	1750	7	4	29.67	29.67	✓
TOTAL WEIGHT THIS SHEET: 16893.9 kgs								16887.70	JMR 7-17-06

Handwritten notes and checkmarks next to the Bill of Material table, including quantities and weights.



GIRDER ~ G3A



SHOP DRAWING REVIEW

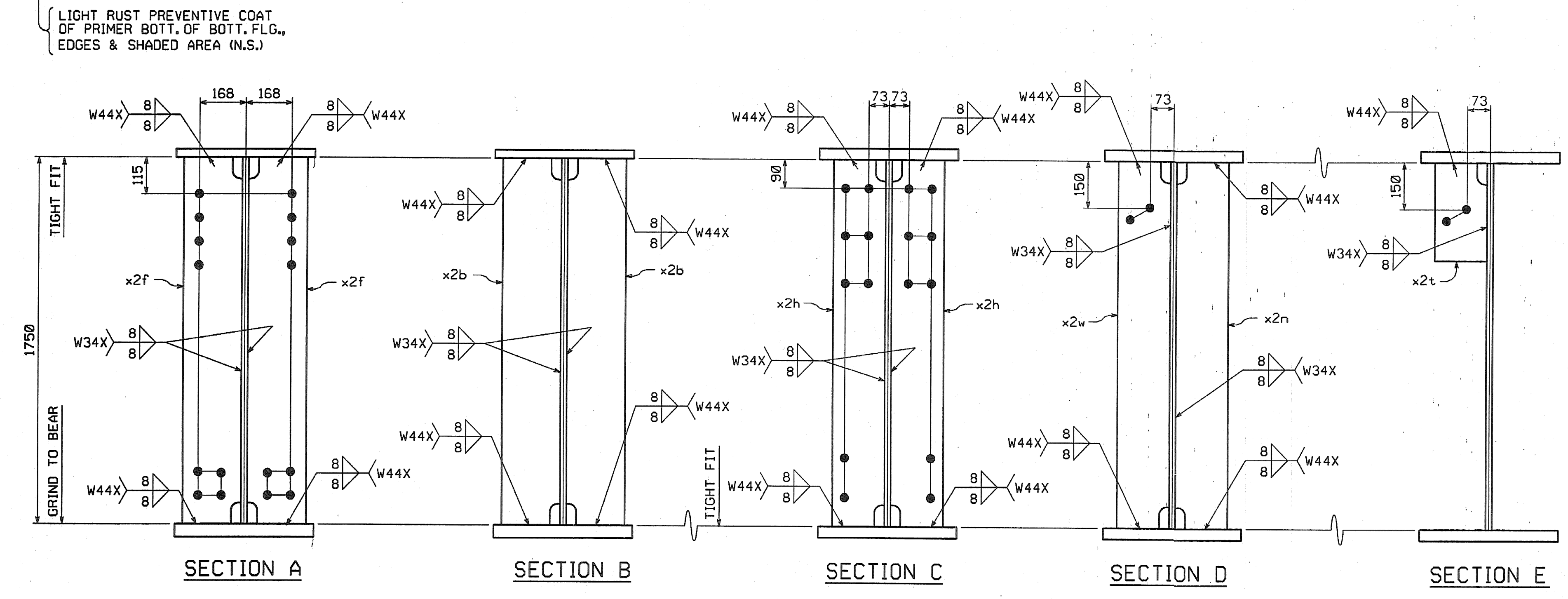
REVIEWED AS REQUIRED BY THE CONSTRUCTION CONTRACT DOCUMENTS AND APPROVED, BUT ONLY FOR CONFORMANCE TO THE DESIGN CONCEPT OF THE WORK, AND SUBJECT TO FURTHER LIMITATIONS AND REQUIREMENTS CONTAINED IN THE CONSTRUCTION CONTRACT DOCUMENTS.

REJECTED REUSE AND RESUBMIT FURNISH AS CORRECTED

CORRECTIONS OR COMMENTS MADE ON THE SHOP DRAWINGS DURING THIS REVIEW DO NOT RELIEVE CONTRACTOR FROM COMPLIANCE WITH REQUIREMENTS OF THE DRAWINGS AND SPECIFICATIONS. THIS CHECK IS ONLY FOR REVIEW OF GENERAL CONFORMANCE WITH THE DESIGN CONCEPT OF THE PROJECT AND GENERAL COMPLIANCE WITH THE INFORMATION GIVEN IN THE CONTRACT DOCUMENTS. THE CONTRACTOR IS RESPONSIBLE FOR CONFIRMING AND CORRELATING ALL QUANTITIES AND DIMENSIONS, SELECTING FABRICATION PROCESSES AND TECHNIQUES OF CONSTRUCTION, COORDINATING HIS WORK WITH THAT OF ALL OTHER TRADES, AND PERFORMING HIS WORK IN A SAFE AND SATISFACTORY MANNER.

VHB Vanasse Hangen Brustlin, Inc. Engineers, Planners, and Scientists
Six Bedford Farms, Wilson Rd. Bedford, NH 03110 603 834 0928

Job Number: 50911
Reviewed By: [Signature]
Date: 11/16/04



SHOP NOTE

HOLES: 1 5/16" ø

BOLTS: NONE

PAINT: SEE DWG. GNI FOR GENERAL SHOP NOTES, SEE DWG. GNI. FOR WEB CAMBER DIAGRAM, SEE DWG. WC1.

△			
△			
1	INCREASE LENGTHS TO SATISFY REQUIREMENTS FOR LENGTH & MEAN TEMPERATURE OF 45°F.	DP	9/17/04
NO.	REVISION	BY	DATE
<p>1770 Hempstead Road Lancaster, PA 17605-0008 Phone 717/298-5211</p> <p>HIGH STEEL STRUCTURES, INC. A Division of High Industries, Inc.</p>			
GIRDER		G3A	
VT 78 OVER MISSISQUOI BAY, BRIDGE NO. 2			
VT 78 STA.10+970.425 TO STA.12+059.775			
TOWNS OF ALBURG AND SWANTON			
COUNTIES OF GRAND ISLE AND FRANKLIN			
STATE OF VERMONT, AGENCY OF TRANSPORTATION			
STATE CONTRACT OR REF. NO.	BRF-036-1(1)		
CONTRACTOR	CIAMBRO CORPORATION		
IN CHARGE:	GLIDDEN (IH)	MADE BY:	DAP
CHK'D. BY:	CS	DATE:	8/18/04
CONTRACT NUMBER:	VT-04057-1	DRAWING NUMBER:	3 OF 112

BY: dpminter
PLOTTED: 9/28/2004 10:42 PM

CODE:30