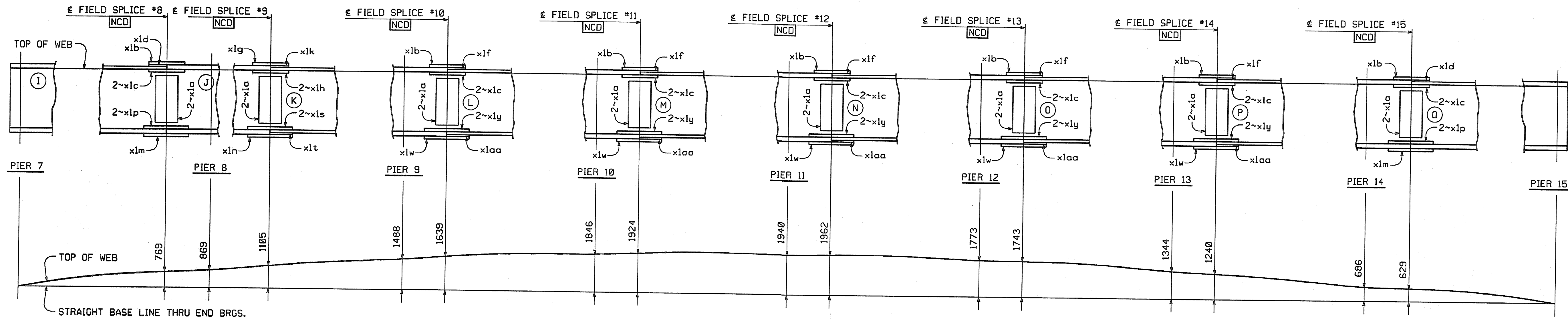


METRIC 1. ALL DIMENSIONS ARE IN MILLIMETERS UNLESS OTHERWISE NOTED.  
2. ALL WEIGHTS ARE IN KILOGRAMS.

FED. ROAD DIV. NO.	STATE	FED. AID PROJ. NO.
	VT	



LINE ASSEMBLY DIAGRAM  
(GIRDER LINES G5 THRU G8)

**NOTES:**

- MATCH MARKING OF SPLICE PLATES IS NOT REQUIRED.
- HOLES MARKED [NCD] ARE TO BE DRILLED FULL-SIZE USING A CNC MACHINING CENTER OR DRILLED FULL-SIZE USING DRILL TEMPLATES. HOLES TO BE 1/16"±.
- FOR GIRDER MARKS, SEE THE ERECTION FRAMING PLAN DRAWINGS OR CALCULATION PLANS. MINIMUM ONE LINE SET-UP AS REQUESTED BY SHOP INSPECTOR.
- (I) INDICATES SUFFIX MARK OF SHIPPING PIECE.
- FIELD SPLICE PLATES TO BE SHIPPED ON THE RIGHT END OF GIRDERS (I) (J) (K) (L) (M) (N) (O) & (P).

SHOP DRAWING REVIEW	
<input checked="" type="checkbox"/>	REVIEWED AS REQUIRED BY THE CONSTRUCTION CONTRACT DOCUMENTS AND APPROVED, BUT ONLY FOR CONFORMANCE TO THE DESIGN CONCEPT OF THE WORK, AND SUBJECT TO FURTHER LIMITATIONS AND REQUIREMENTS CONTAINED IN THE CONSTRUCTION CONTRACT DOCUMENTS.
<input type="checkbox"/>	REJECTED
<input type="checkbox"/>	REVISE AND RESUBMIT
<input type="checkbox"/>	FURNISH AS CORRECTED
CORRECTIONS OR COMMENTS MADE ON THE SHOP DRAWINGS DURING THIS REVIEW DO NOT RELIEVE CONTRACTOR FROM COMPLIANCE WITH REQUIREMENTS OF THE DRAWINGS AND SPECIFICATIONS. THIS CHECK IS ONLY FOR REVIEW OF GENERAL CONFORMANCE WITH THE DESIGN CONCEPT OF THE PROJECT AND GENERAL COMPLIANCE WITH THE INFORMATION GIVEN IN THE CONTRACT DOCUMENTS. THE CONTRACTOR IS RESPONSIBLE FOR: CONFIRMING AND CORRELATING ALL QUANTITIES AND DIMENSIONS; SELECTING FABRICATION PROCESSES AND TECHNIQUES OF CONSTRUCTION; COORDINATING HIS WORK WITH THAT OF ALL OTHER TRADES; AND PERFORMING HIS WORK IN A SAFE AND SATISFACTORY MANNER.	
VHB Vincenzo Hargen Brustin, Inc. Engineers, Planners, and Scientists Six Bedford Farms, Milton Rd. Bedford, NH 03110 603 644 0889	Job Number: 50911 Reviewed By: [Signature] Date: 11/16/04

△			
△			
△			
NO.	REVISION	BY	DATE
1770 Hempstead Road Lancaster, PA 17605-0008 <b>HIGH STEEL STRUCTURES, INC.</b> Phone 717/299-5211 A Division of High Industries, Inc.			
SHOP ASSEMBLY DIAGRAM			
VT 78 OVER MISSISQUOI BAY, BRIDGE NO. 2			
VT 78 STA.10+970.425 TO STA.12+059.775			
TOWNS OF ALBURG AND SWANTON			
COUNTIES OF GRAND ISLE AND FRANKLIN			
STATE OF VERMONT, AGENCY OF TRANSPORTATION			
STATE CONTRACT OR REF. NO. BRF-036-1(1)			
CONTRACTOR CIANBRO CORPORATION			
IN CHARGE: GLIDDEN (IH)	MADE BY: SSL	CHK'D. BY: CS	DATE: 8-11-04
CONTRACT NUMBER: VT-04057-2		DRAWING NUMBER: SA2 OF SA3	