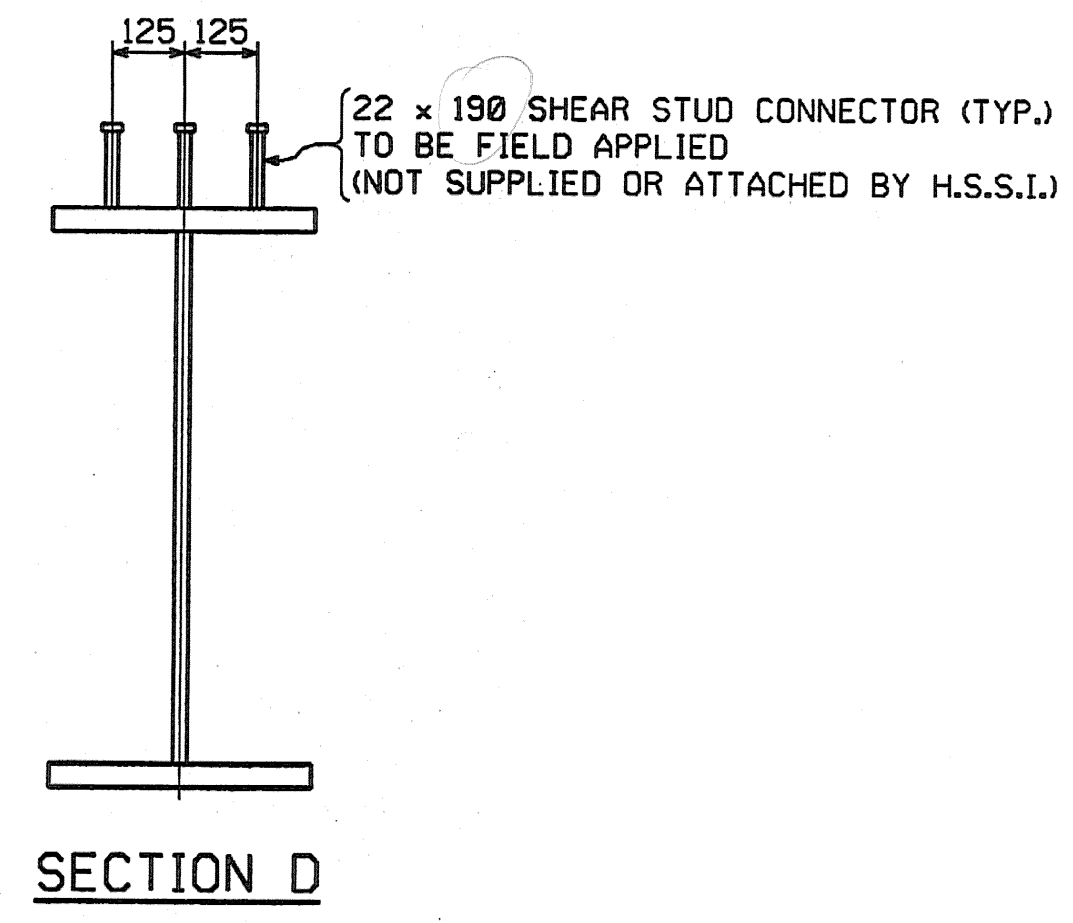
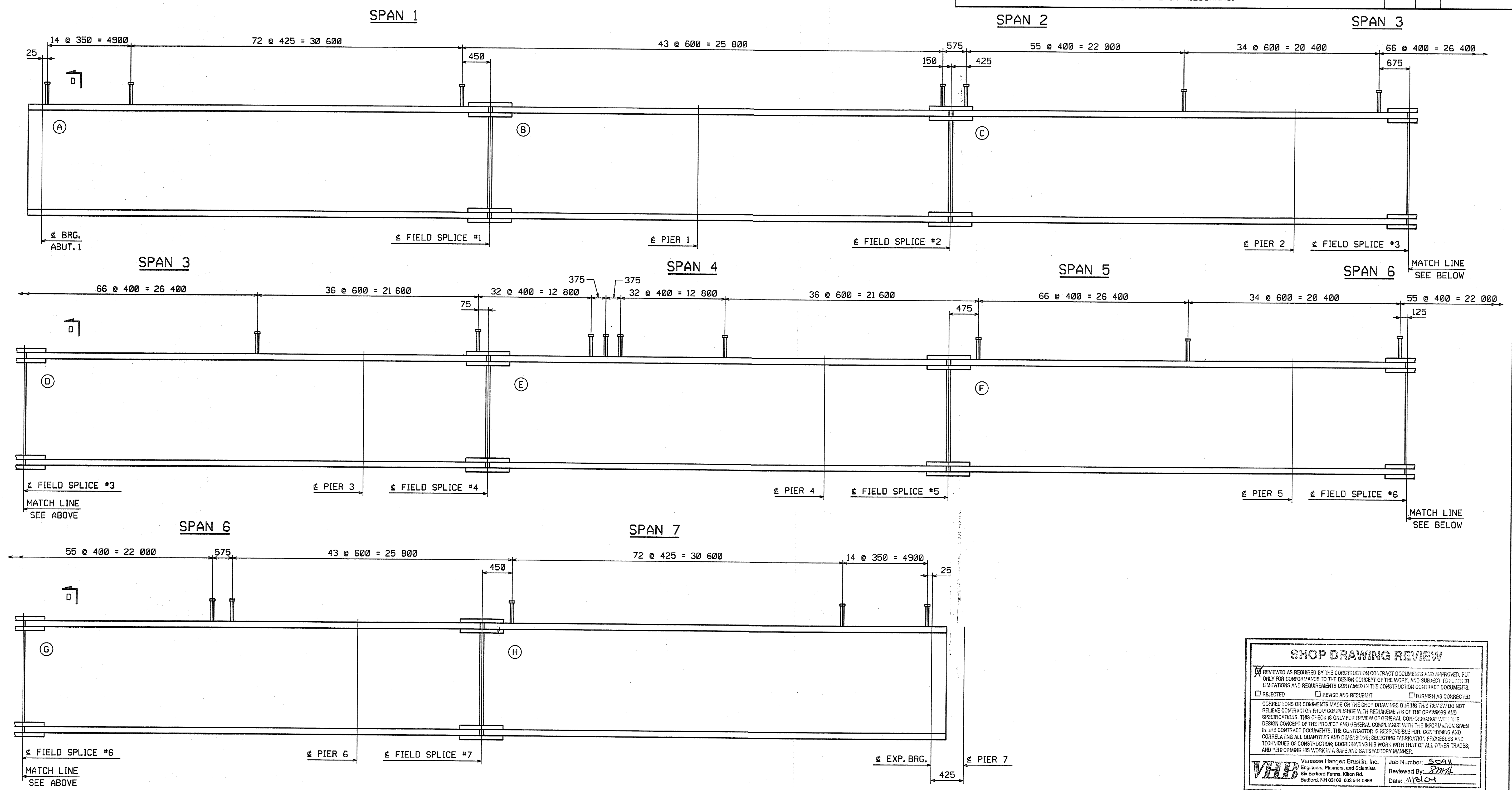


METRIC 1. ALL DIMENSIONS ARE IN MILLIMETERS UNLESS OTHERWISE NOTED.
2. ALL WEIGHTS ARE IN KILOGRAMS.

FED. ROAD DIV. NO.	STATE	FED. AID PROJ. NO.
	VT	



SHEAR STUD CONNECTOR LOCATION LAYOUT
UNIT 1 ~ GIRDERS G1 THRU G4

NOTES:
FOR NOTES, SEE DRAWING E1.
WORK THIS DRAWING WITH DRAWINGS E1, E2 & E3.
(A) INDICATES SUFFIX MARK OF SHIPPING PIECE.

SHOP DRAWING REVIEW

REVIEWED AS REQUIRED BY THE CONSTRUCTION CONTRACT DOCUMENTS AND APPROVED, BUT ONLY FOR CONFORMANCE TO THE DESIGN CONCEPT OF THE WORK, AND SUBJECT TO FURTHER LIMITATIONS AND REQUIREMENTS CONTAINED IN THE CONSTRUCTION CONTRACT DOCUMENTS.

REJECTED REVISE AND RESUBMIT FURNISH AS CORRECTED

CORRECTIONS OR COMMENTS MADE ON THE SHOP DRAWINGS DURING THIS REVIEW DO NOT RELIEVE CONTRACTOR FROM COMPLIANCE WITH REQUIREMENTS OF THE DRAWINGS AND SPECIFICATIONS. THIS CHECK IS ONLY FOR REVIEW OF GENERAL CONFORMANCE WITH THE DESIGN CONCEPT OF THE PROJECT AND GENERAL COMPLIANCE WITH THE INFORMATION GIVEN IN THE CONTRACT DOCUMENTS. THE CONTRACTOR IS RESPONSIBLE FOR: COORDINATING AND CORRELATING ALL QUANTITIES AND DIMENSIONS; SELECTING FABRICATION PROCESSES AND TECHNIQUES OF CONSTRUCTION; COORDINATING HIS WORK WITH THAT OF ALL OTHER TRADES; AND PERFORMING HIS WORK IN A SAFE AND SATISFACTORY MANNER.

VHB Vannise Hagen Brustlin, Inc.
Engineers, Planners, and Scientists
16 Bedford Farms, Kilton Rd.
Bedford, NH 03110 603 644 0888

Job Number: 5041
Reviewed By: SMH
Date: 11/10/01

NO.	REVISION	BY	DATE
<p>1770 Hemstead Road Lonsdale, PA 17035-0008 Phone 717/295-5211</p> <p>HIGH STEEL STRUCTURES, INC. A Division of High Industries, Inc.</p>			
<p>ERECTOR PLAN ~ STUD LAYOUTS VT 78 OVER MISSISQUOI BAY, BRIDGE NO. 2 VT 78 STA.10+970.425 TO STA.12+059.775 TOWNS OF ALBURG AND SWANTON COUNTIES OF GRAND ISLE AND FRANKLIN STATE OF VERMONT, AGENCY OF TRANSPORTATION</p>			
STATE CONTRACT OR REF. NO. BRF-036-1(1)			
CONTRACTOR: CIAMBRO CORPORATION			
IN CHARGE: GLIDDEN (IH) MADE: DAP CHK'D: JSA DATE: 8/24/04			
CONTRACT NUMBER: VT-04057-1 DRAWING NUMBER: E9 OF E11			

PLOTTED: 8/29/2004 7:16:08 AM BY: dpanter