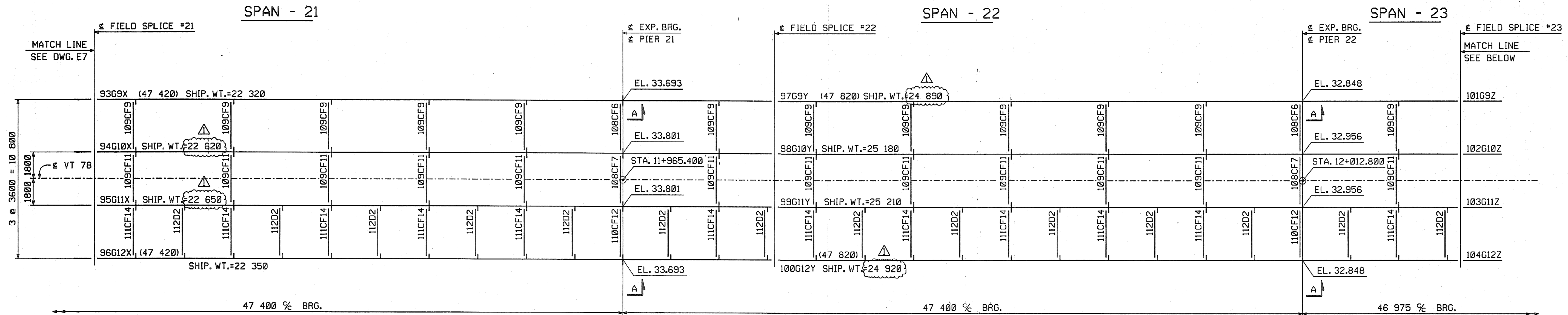
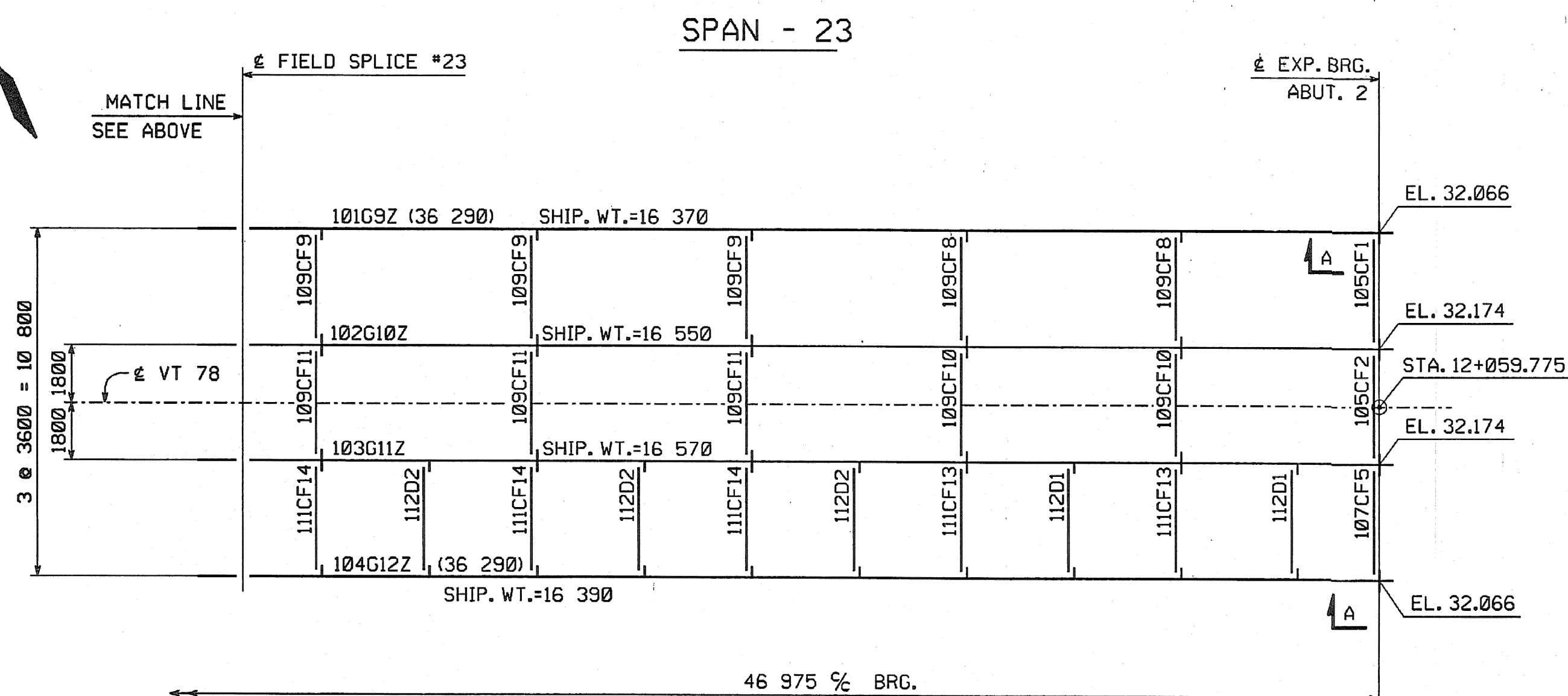


METRIC 1. ALL DIMENSIONS ARE IN MILLIMETERS UNLESS OTHERWISE NOTED.  
2. ALL WEIGHTS ARE IN KILOGRAMS.

FED. ROAD DIV. NO.	STATE	FED. AID PROJ. NO.
	VT	



ERECTION FRAMING PLAN  
(SHIPMENT - 3)



ERECTION FRAMING PLAN  
(SHIPMENT 3)

SHOP DRAWING REVIEW	
<input checked="" type="checkbox"/>	REVIEWED AS REQUIRED BY THE CONSTRUCTION CONTRACT DOCUMENTS AND APPROVED, BUT ONLY FOR CONFORMANCE TO THE DESIGN CONCEPT OF THE WORK, AND SUBJECT TO THE LIMITATIONS AND REQUIREMENTS CONTAINED IN THE CONSTRUCTION CONTRACT DOCUMENTS.
<input type="checkbox"/>	REJECTED
<input type="checkbox"/>	REVISE AND REQUIRY
<input type="checkbox"/>	FURNISH AS CORRECTED
CORRECTIONS OR COMMENTS MADE ON THE SHOP DRAWINGS DURING THIS REVIEW DO NOT RELIEVE CONTRACTOR FROM COMPLIANCE WITH REQUIREMENTS OF THE DRAWINGS AND SPECIFICATIONS. THIS CHECK IS ONLY FOR REVIEW OF GENERAL CONFORMANCE WITH THE DESIGN CONCEPT OF THE PROJECT AND GENERAL COMPLIANCE WITH THE INFORMATION GIVEN IN THE CONTRACT DOCUMENTS. THE CONTRACTOR IS RESPONSIBLE FOR: COORDINATING AND CORRELATING ALL QUANTITIES AND DIMENSIONS; SELECTING FABRICATION PROCESSES AND TECHNIQUES OF CONSTRUCTION; COORDINATING HIS WORK WITH THAT OF ALL OTHER TRADES; AND PERFORMING HIS WORK IN A SAFE AND SATISFACTORY MANNER.	
Vanasse Hangen Brustlin, Inc. Engineers, Planners, and Scientists Six Bedford Farms, Kilton Rd. Bedford, NH 03112 603 844 0888	Job Number: 55411 Reviewed By: <i>[Signature]</i> Date: 11/21/04

△			
△			
△	INCREASE LENGTHS TO SATISFY REQUIREMENTS FOR LENGTH & MEAN TEMPERATURE OF 48°F. (WEIGHT CHANGED)	DP	9/20/04
NO.	REVISION	BY	DATE

1770 Hempstead Road Lancaster, PA 17605-0008 Phone 717/299-5211 <b>HIGH STEEL STRUCTURES, INC.</b> A Division of High Industries, Inc.	
ERECTION FRAMING PLAN	
VT 78 OVER MISSISQUOI BAY, BRIDGE NO. 2	
VT 78 STA.10+970.425 TO STA.12+059.775	
TOWNS OF ALBURG AND SWANTON	
COUNTIES OF GRAND ISLE AND FRANKLIN	
STATE OF VERMONT, AGENCY OF TRANSPORTATION	
STATE CONTRACT OR REF. NO.	BRF-036-1(1)
CONTRACTOR	CIANBRO CORPORATION
IN CHARGE:	GLIDDEN (IH)
MADE BY:	JSA
CHK'D BY:	DAP
DATE:	8-24-04
CONTRACT NUMBER:	VT-04057-3
DRAWING NUMBER:	E8 OF E11

NOTES:  
FOR NOTES, SEE DRAWING E1.  
WORK THIS DRAWING WITH DRAWINGS E1 THRU E7 & E9 THRU E11.