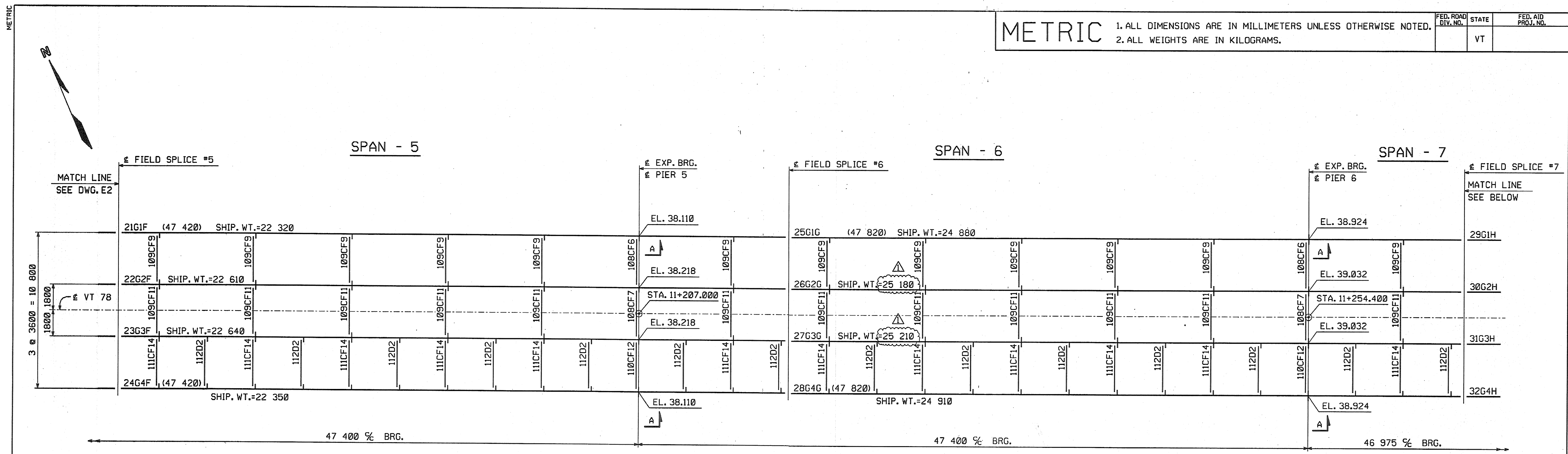
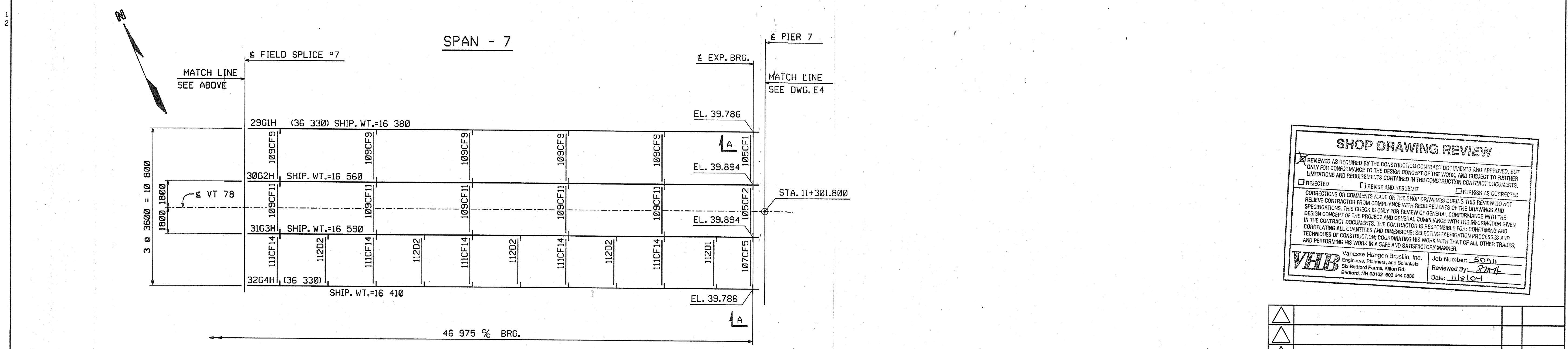


**METRIC** 1. ALL DIMENSIONS ARE IN MILLIMETERS UNLESS OTHERWISE NOTED.  
2. ALL WEIGHTS ARE IN KILOGRAMS.

FED. ROAD DIV. NO.	STATE	FED. AID PROJ. NO.
	VT	



**ERECTION FRAMING PLAN**  
(SHIPMENT 1)



**ERECTION FRAMING PLAN**  
(SHIPMENT 1)

**SHOP DRAWING REVIEW**

REVIEWED AS REQUIRED BY THE CONSTRUCTION CONTRACT DOCUMENTS AND APPROVED, BUT ONLY FOR CONFORMANCE TO THE DESIGN CONCEPT OF THE WORK, AND SUBJECT TO FURTHER LIMITATIONS AND REQUIREMENTS CONTAINED IN THE CONSTRUCTION CONTRACT DOCUMENTS.

REJECTED       REVISE AND RESUBMIT       FURNISH AS CORRECTED

CORRECTIONS OR COMMENTS MADE ON THE SHOP DRAWINGS DURING THIS REVIEW DO NOT RELIEVE CONTRACTOR FROM COMPLIANCE WITH REQUIREMENTS OF THE DRAWINGS AND SPECIFICATIONS. THIS CHECK IS ONLY FOR REVIEW OF GENERAL CONFORMANCE WITH THE DESIGN CONCEPT OF THE PROJECT AND GENERAL CONFORMANCE WITH THE INFORMATION GIVEN IN THE CONTRACT DOCUMENTS. THE CONTRACTOR IS RESPONSIBLE FOR CONFIRMING AND CORRELATING ALL QUANTITIES AND DIMENSIONS, SELECTING FABRICATION PROCESSES AND TECHNIQUES OF CONSTRUCTION, COORDINATING HIS WORK WITH THAT OF ALL OTHER TRADES, AND PERFORMING HIS WORK IN A SAFE AND SATISFACTORY MANNER.

**VH&B** Vanasse Hangen Brustlin, Inc.  
Engineers, Planners, and Scientists  
Six Bedford Farms, Keene Rd.  
Bedford, NH 03110 603 944 0883

Job Number: 50011  
Reviewed By: [Signature]  
Date: 11/2/04

△			
△			
△	INCREASE LENGTHS TO SATISFY REQUIREMENTS FOR LENGTH & MEAN TEMPERATURE OF 45°F. (WEIGHT CHANGED)	DP	9/20/04
NO.	REVISION	BY	DATE
 1770 Hempstead Road Lancaster, PA 17605-0008 Phone 717/299-5211 A Division of High Industries, Inc.			
ERECTION FRAMING PLAN			
VT 78 OVER MISSISQUOI BAY, BRIDGE NO. 2			
VT 78 STA.10+970.425 TO STA.12+059.775			
TOWNS OF ALBURG AND SWANTON			
COUNTIES OF GRAND ISLE AND FRANKLIN			
STATE OF VERMONT, AGENCY OF TRANSPORTATION			
STATE CONTRACT OR REF. NO. <u>BRF-036-111</u>			
CONTRACTOR <u>CIANBRO CORPORATION</u>			
IN CHARGE: <u>GLIDDEN (IH)</u>	MADE BY: <u>JSA</u>	CHK'D BY: <u>DAP</u>	DATE: <u>8-24-04</u>
CONTRACT NUMBER: <u>VT-04057-1</u>		DRAWING NUMBER: <u>E3 OF E11</u>	

**NOTES:**  
FOR NOTES, SEE DRAWING E1.  
WORK THIS DRAWING WITH DRAWINGS E1, E2 & E4 THRU E11.

BY: dprinter

PLOTTED: 9/20/2004 14:34:53 PM