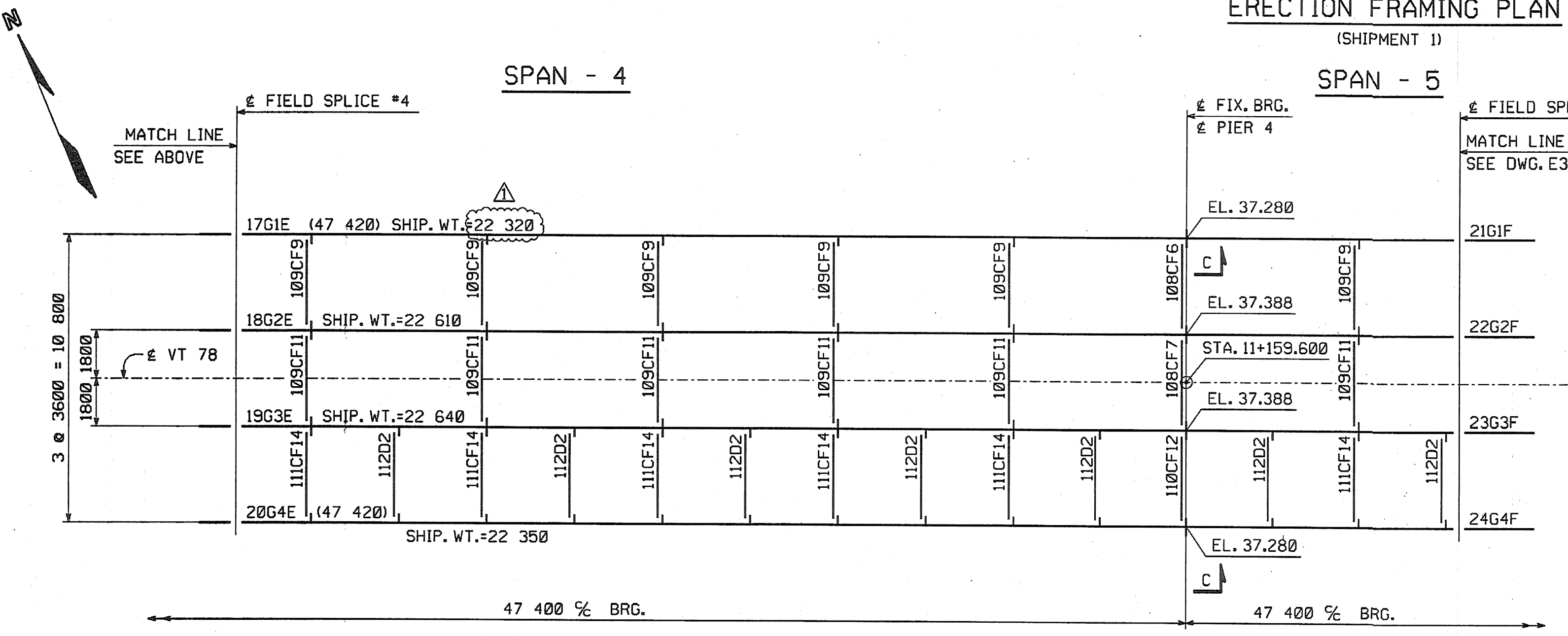
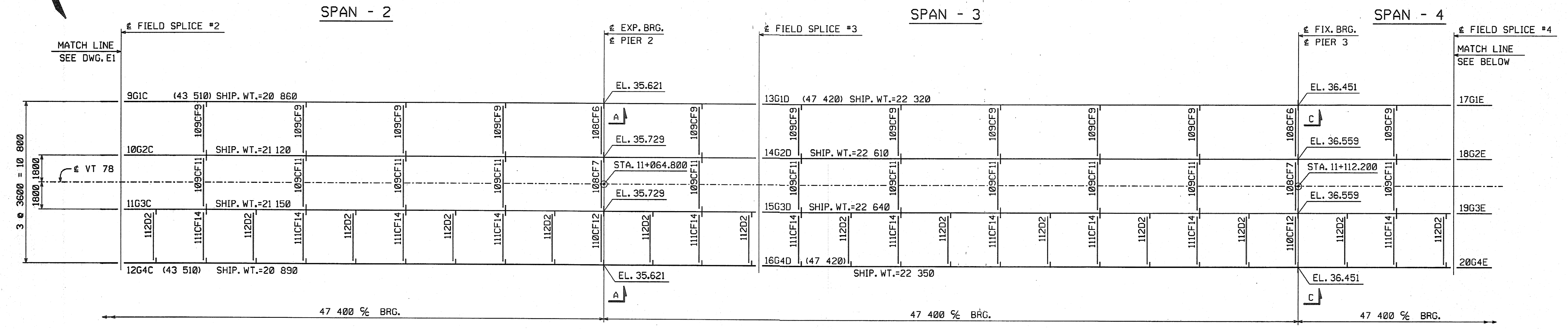


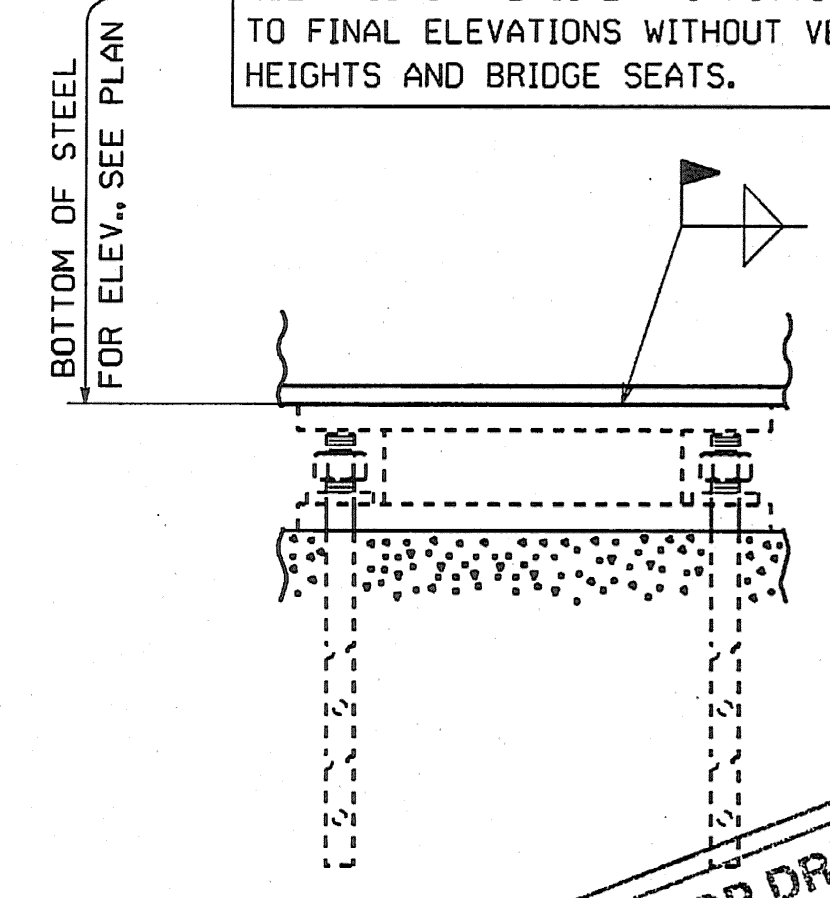
METRIC

1. ALL DIMENSIONS ARE IN MILLIMETERS UNLESS OTHERWISE NOTED.
2. ALL WEIGHTS ARE IN KILOGRAMS.

| | | |
|--------------------|-------|--------------------|
| FED. ROAD DIV. NO. | STATE | FED. AID PROJ. NO. |
| | VT | |



CONTRACTOR NOTE:
ELEVATIONS ARE GIVEN TO BOTTOM OF STEEL - DO NOT POUR TO FINAL ELEVATIONS WITHOUT VERIFICATION OF BEARING HEIGHTS AND BRIDGE SEATS.



SECTION SHOP DRAWING REVIEW

REVIEWED AS REQUIRED BY THE CONSTRUCTION CONTRACT DOCUMENTS AND APPROVED, BUT ONLY FOR COMPLIANCE TO THE DESIGN CONCEPT OF THE WORK, AND SUBJECT TO FURTHER LIMITATIONS AND REQUIREMENTS CONTAINED IN THE CONSTRUCTION CONTRACT DOCUMENTS.

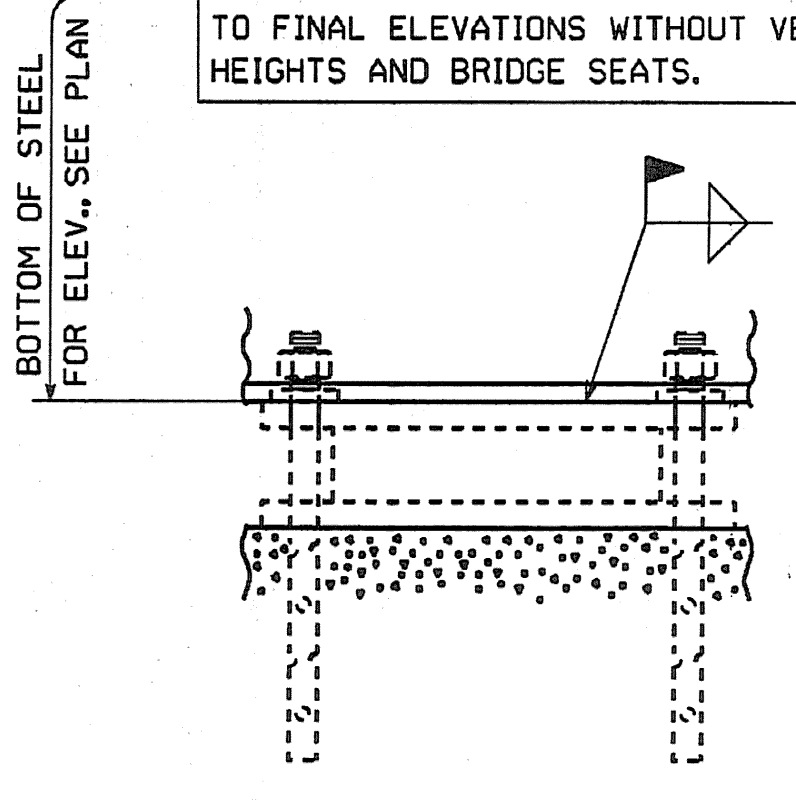
APPROVED AND REVISION

REJECTED

CORRECTIONS OR COMMENTS MADE ON THE SHOP DRAWINGS DURING THIS REVIEW DO NOT RELIEVE CONTRACTOR FROM COMPLIANCE WITH REQUIREMENTS OF THE CONTRACT AND SPECIFICATIONS OF THE PROJECT AND GENERAL COMPLIANCE WITH THE INFORMATION GIVEN IN THE CONTRACT DOCUMENTS. THE CONTRACTOR IS RESPONSIBLE FOR COORDINATION AND CORRELATION OF QUANTITIES AND DIMENSIONS AND FOR VERIFYING FABRICATION PROCEDURES AND TECHNIQUES OF CONSTRUCTION, COORDINATING AND WORK WITH THAT OF ALL OTHER TRADES, AND PERFORMING HIS WORK IN A SAFE AND SATISFACTORY MANNER.

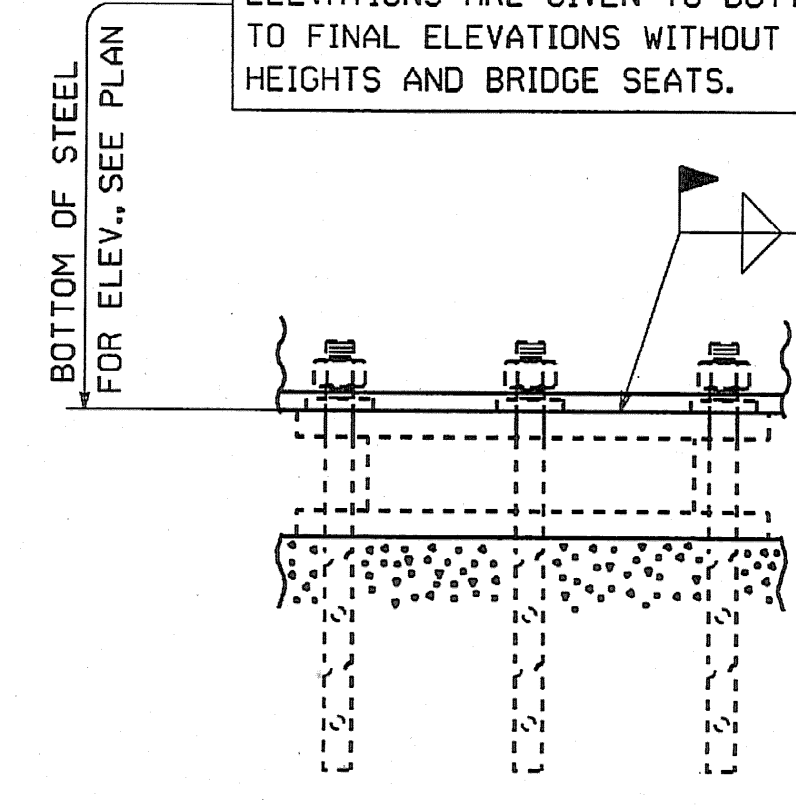
Reviewed By: *[Signature]*
Date: 11/10/04

CONTRACTOR NOTE:
ELEVATIONS ARE GIVEN TO BOTTOM OF STEEL - DO NOT POUR TO FINAL ELEVATIONS WITHOUT VERIFICATION OF BEARING HEIGHTS AND BRIDGE SEATS.



SECTION B

CONTRACTOR NOTE:
ELEVATIONS ARE GIVEN TO BOTTOM OF STEEL - DO NOT POUR TO FINAL ELEVATIONS WITHOUT VERIFICATION OF BEARING HEIGHTS AND BRIDGE SEATS.



SECTION C

NOTES:
FOR NOTES, SEE DRAWING E1.
WORK THIS DRAWING WITH DRAWINGS E1 & E3 THRU E11.

| | | | |
|---|--|-----------------|-----------|
| △ | | | |
| △ | | | |
| △ | INCREASE LENGTHS TO SATISFY REQUIREMENTS FOR LENGTH & MEAN TEMPERATURE OF 45°F. (WEIGHT CHANGED) | DP | 9/20/04 |
| NO. | REVISION | BY | DATE |
| | | | |
| ERECTION FRAMING PLAN VT 78 OVER MISSISSQUOI BAY, BRIDGE NO. 2 VT 78 STA. 10+370.425 TO STA. 12+059.775 TOWNS OF ALBURG AND SWANTON COUNTIES OF GRAND ISLE AND FRANKLIN STATE OF VERMONT, AGENCY OF TRANSPORTATION | | | |
| STATE CONTRACT OR REF. NO. | BRF-036-1(1) | | |
| CONTRACTOR | CIAMBRO CORPORATION | | |
| IN CHARGE: | GLIDDEN (IH) | MADE BY: | JSA |
| CHK'D. BY: | DAP | DATE: | 8-24-04 |
| CONTRACT NUMBER: | VT-04057-1 | DRAWING NUMBER: | E2 OF E11 |