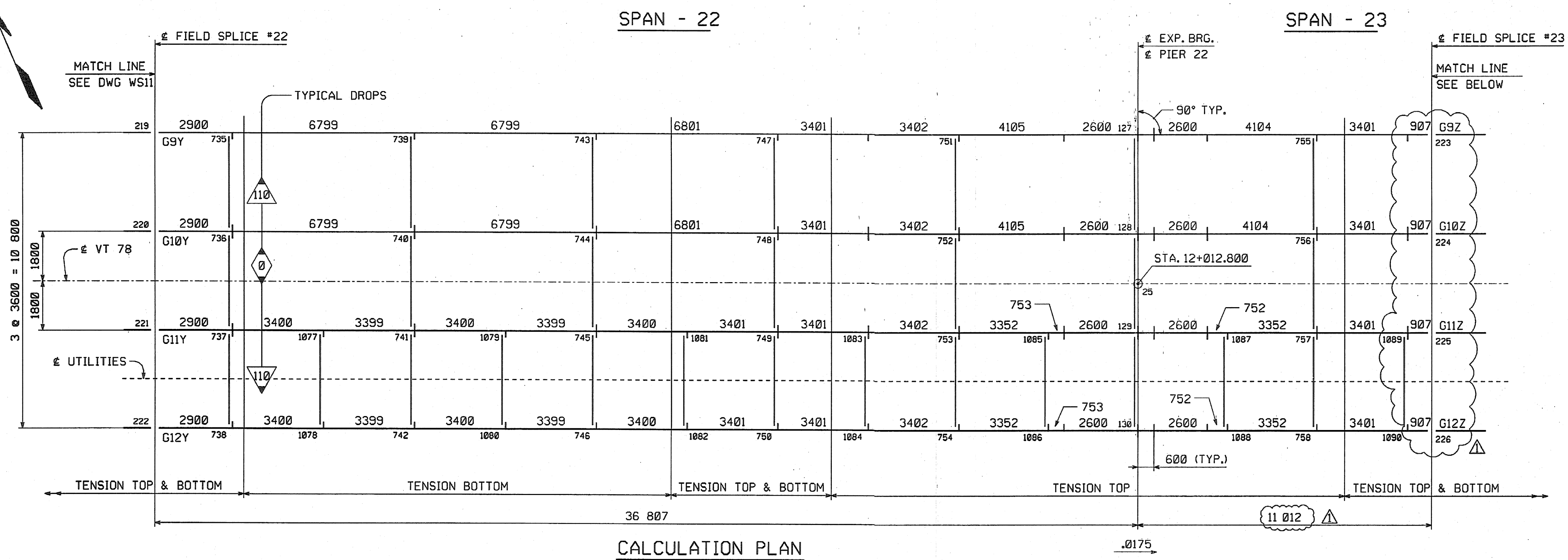
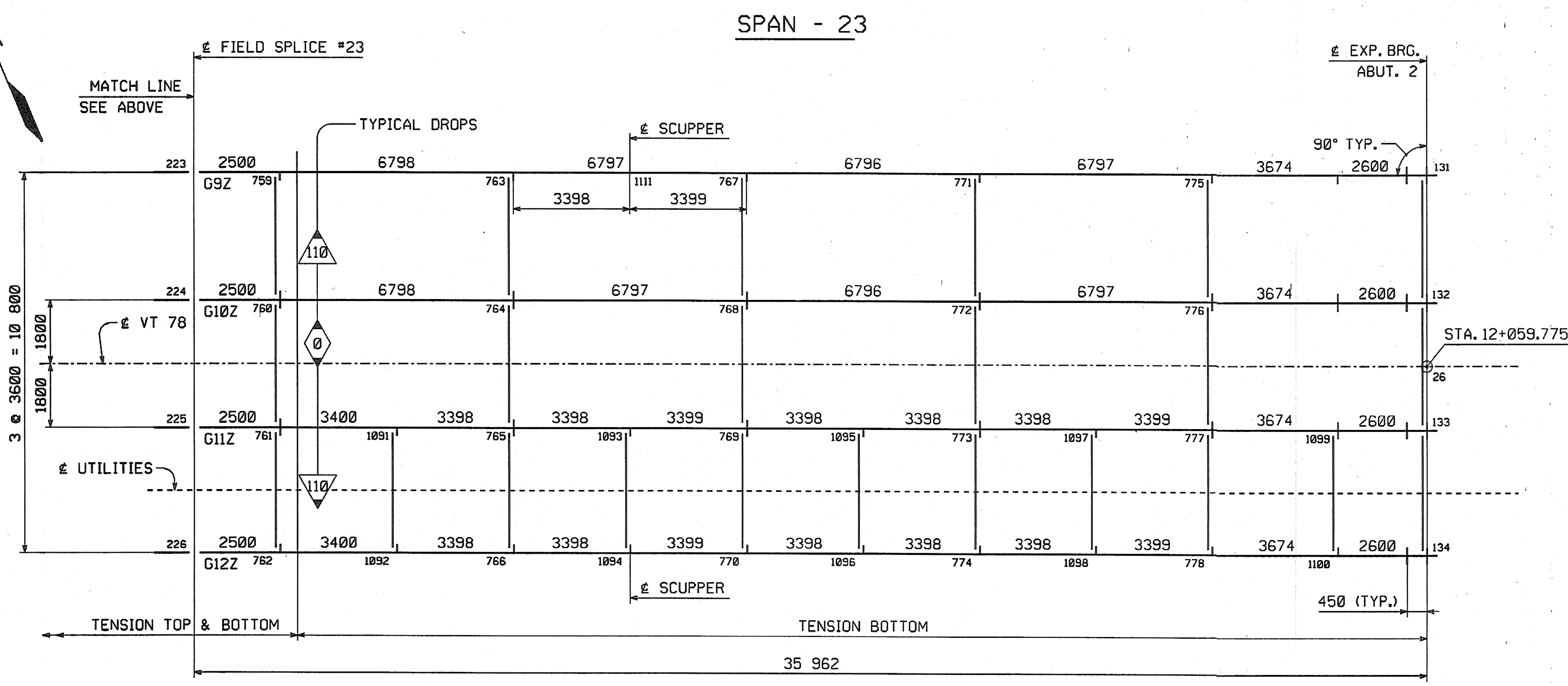


METRIC 1. ALL DIMENSIONS ARE IN MILLIMETERS UNLESS OTHERWISE NOTED.
2. ALL WEIGHTS ARE IN KILOGRAMS.

FED. ROAD DIV. NO.	STATE	FED. AID PROJ. NO.
	VT	



CALCULATION PLAN



CALCULATION PLAN

CONTRACT PLAN LENGTHS HAVE BEEN INCREASED AS REQUIRED TO SATISFY MEAN TEMPERATURE LENGTH AT FORTY-FIVE DEGREES WITH FABRICATION AT SIXTY-EIGHT DEGREES MEAN TEMPERATURE

NOTES:
FOR NOTES, SEE DRAWING WS1.
WORK THIS DRAWING WITH DRAWING WS11.

NOTE:
THE PURPOSE OF THIS DRAWING IS TO COORDINATE GEOMETRIC CONTROL INFORMATION. THIS DRAWING IS SUBMITTED FOR INFORMATION ONLY AND IS NOT INTENDED FOR SHOP FABRICATION. THIS DRAWING IS FOR REFERENCE ONLY, APPROVAL IS NOT REQUIRED.

SHOP DRAWING REVIEW

REVIEWED AS REQUIRED BY THE CONSTRUCTION CONTRACT DOCUMENTS AND APPROVED, BUT ONLY FOR CONFORMANCE TO THE DESIGN CONCEPT OF THE WORK, AND SUBJECT TO FURTHER LIMITATIONS AND REQUIREMENTS CONTAINED IN THE CONSTRUCTION CONTRACT DOCUMENTS.

REJECTED REVISE AND RESUBMIT FURNISH AS CORRECTED

CORRECTIONS OR COMMENTS MADE ON THE SHOP DRAWINGS DURING THIS REVIEW DO NOT RELIEVE CONTRACTOR FROM COMPLIANCE WITH REQUIREMENTS OF THE DRAWINGS AND SPECIFICATIONS. THIS CHECK IS ONLY FOR REVIEW OF GENERAL CONFORMANCE WITH THE DESIGN CONCEPT OF THE PROJECT AND GENERAL COMPLIANCE WITH THE INFORMATION GIVEN IN THE CONTRACT DOCUMENTS. THE CONTRACTOR IS RESPONSIBLE FOR COORDINATING AND CORRECTING ALL QUANTITIES AND DIMENSIONS, SELECTING FABRICATION PROCESSES AND TECHNIQUES OF CONSTRUCTION, COORDINATING HIS WORK WITH THAT OF ALL OTHER TRADES, AND PERFORMING HIS WORK IN A SAFE AND SATISFACTORY MANNER.

VHB Vanasse Hangen Brustlin, Inc.
Engineers, Planners, and Scientists
Six Bedford Farms, Kittery Rd.
Bedford, NH 03112 603 644 0088

Job Number: 50911
Reviewed By: SMH
Date: 11/3/04

△			
△			
△	INCREASE LENGTHS TO SATISFY REQUIREMENTS FOR LENGTH & MEAN TEMPERATURE OF 45°F.	JSA	9/17/04
NO.	REVISION	BY	DATE
1770 Hempstead Road Lancaster, PA 17605-0008 HIGH STEEL STRUCTURES, INC. Phone 717/299-5211 A Division of High Industries, Inc.			
WORKSHEET - CALCULATION PLAN			
VT 78 OVER MISSISSQUOI BAY, BRIDGE NO. 2			
VT 78 STA.10+970.425 TO STA.12+059.775			
TOWNS OF ALBURG AND SWANTON			
COUNTIES OF GRAND ISLE AND FRANKLIN			
STATE OF VERMONT, AGENCY OF TRANSPORTATION			
STATE CONTRACT OR REF. NO.	BRF-036-1(1)		
CONTRACTOR	CIAMBRO CORPORATION		
IN CHARGE:	GLIDDEN (IH)	MADE BY:	JSA
CHK'D:	CS	DATE:	8-9-04
CONTRACT NUMBER:	VT-04057-3	DRAWING NUMBER:	WS12 OF WS12

Scale = 0.0100000 of full size.

PLOTTED: 9/20/2004 10:35:36 PM