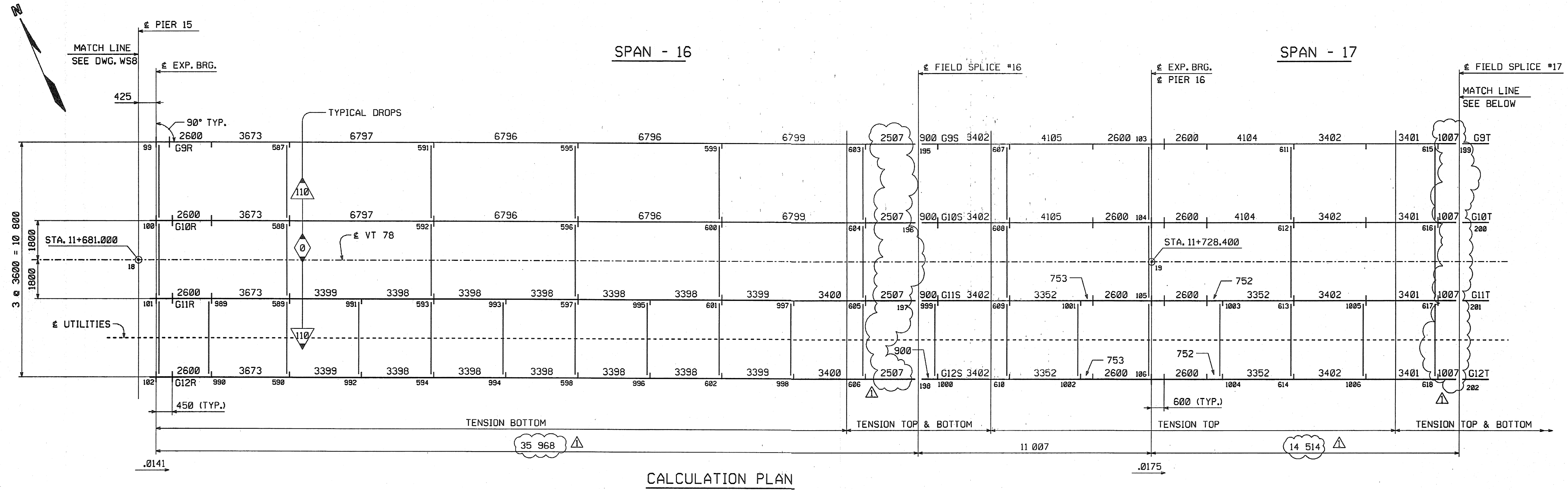


METRIC 1. ALL DIMENSIONS ARE IN MILLIMETERS UNLESS OTHERWISE NOTED.
2. ALL WEIGHTS ARE IN KILOGRAMS.

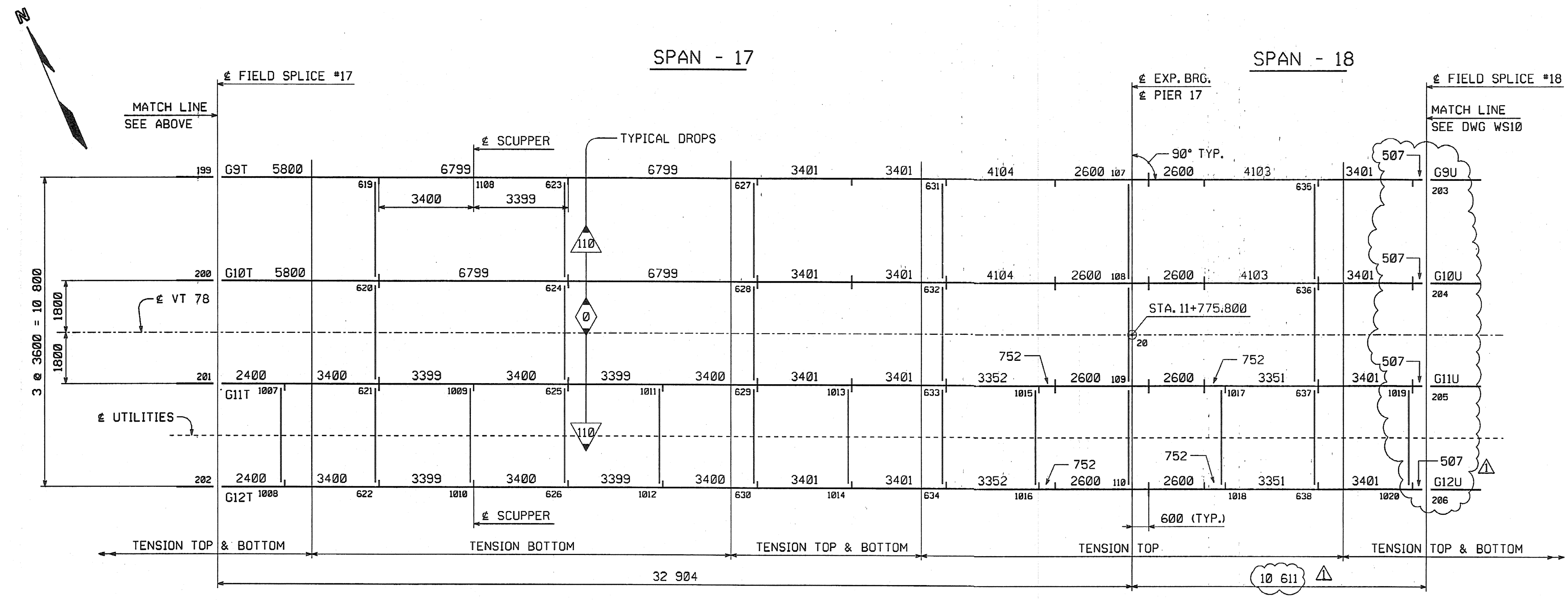
FED. ROAD DIV. NO.	STATE	FED. AID PROJ. NO.
	VT	

METRIC

Scale = 0.01/10000 of full size.



CALCULATION PLAN



CALCULATION PLAN

CONTRACT PLAN LENGTHS HAVE BEEN INCREASED AS REQUIRED TO SATISFY MEAN TEMPERATURE LENGTH AT FORTY-FIVE DEGREES WITH FABRICATION AT SIXTY-EIGHT DEGREES MEAN TEMPERATURE

NOTES:
FOR NOTES, SEE DRAWING WS1.
WORK THIS DRAWING WITH DRAWINGS WS8 AND WS10.

NOTE:
THE PURPOSE OF THIS DRAWING IS TO COORDINATE GEOMETRIC CONTROL INFORMATION. THIS DRAWING IS SUBMITTED FOR INFORMATION ONLY AND IS NOT INTENDED FOR SHOP FABRICATION. THIS DRAWING IS FOR REFERENCE ONLY, APPROVAL IS NOT REQUIRED.

SHOP DRAWING REVIEW

REVIEWED AS REQUIRED BY THE CONSTRUCTION CONTRACT DOCUMENTS AND APPROVED, BUT ONLY FOR CONFORMANCE TO THE DESIGN CONCEPT OF THE WORK, AND SUBJECT TO FURTHER LIMITATIONS AND REQUIREMENTS CONTAINED IN THE CONSTRUCTION CONTRACT DOCUMENTS.

REJECTED REVISE AND RESUBMIT FURNISH AS CORRECTED

CORRECTIONS OR COMMENTS MADE ON THE SHOP DRAWINGS DURING THIS REVIEW DO NOT RELIEVE CONTRACTOR FROM COMPLIANCE WITH REQUIREMENTS OF THE DRAWINGS AND SPECIFICATIONS. THIS CHECK IS ONLY FOR REVIEW OF GENERAL CONFORMANCE WITH THE DESIGN CONCEPT OF THE PROJECT AND GENERAL COMPLIANCE WITH THE INFORMATION GIVEN IN THE CONTRACT DOCUMENTS. THE CONTRACTOR IS RESPONSIBLE FOR CONFORMING AND CORRELATING ALL QUANTITIES AND DIMENSIONS; SELECTING FABRICATION PROCESSES AND TECHNIQUES OF CONSTRUCTION; COORDINATING HIS WORK WITH THAT OF ALL OTHER TRADES; AND PERFORMING HIS WORK IN A SAFE AND SATISFACTORY MANNER.

VHB Vanasse Hangen Brustlin, Inc.
Engineers, Planners, and Scientists
Six Bedford Farms, Milton Rd.
Bedford, NH 03112 603 644 0888

Job Number: 50911
Reviewed By: [Signature]
Date: 11/13/04

NO.	REVISION	BY	DATE
1	INCREASE LENGTHS TO SATISFY REQUIREMENTS FOR LENGTH & MEAN TEMPERATURE OF 45°F.	JSA	9/17/04
<p>170 Hempstead Road Lancaster, PA 17604-0008 Phone 717/299-5211</p> <p>HIGH STEEL STRUCTURES, INC.</p> <p>A Division of High Industries, Inc.</p>			
<p>WORKSHEET ~ CALCULATION PLAN</p> <p>VT 78 OVER MISSISQUOI BAY, BRIDGE NO. 2</p> <p>VT 78 STA.10+970.425 TO STA.12+059.775</p> <p>TOWNS OF ALBURG AND SWANTON</p> <p>COUNTIES OF GRAND ISLE AND FRANKLIN</p> <p>STATE OF VERMONT, AGENCY OF TRANSPORTATION</p>			
STATE CONTRACT OR REF. NO. BRF-036-1(1)			
CONTRACTOR CIANBRO CORPORATION			
IN CHARGE: GLIDDEN (IH)	MADE BY: JSA	CHK'D. CS	DATE: 8-9-04
CONTRACT NUMBER: VT-04057-3		DRAWING NUMBER: WS9 OF WS12	