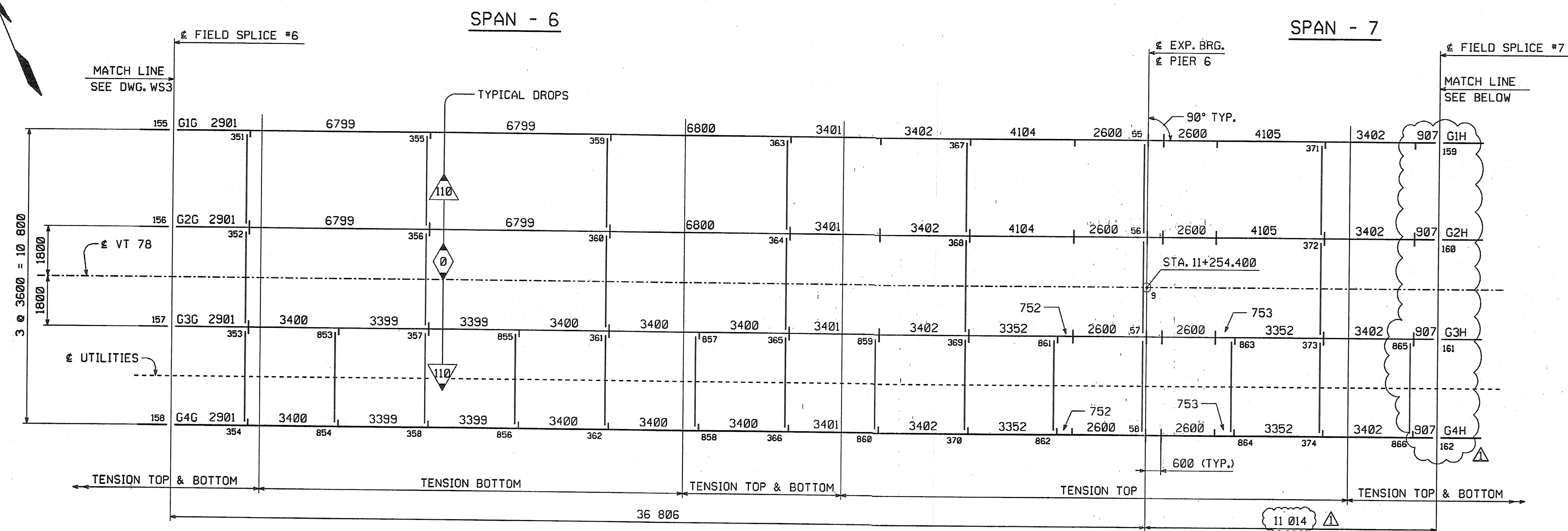


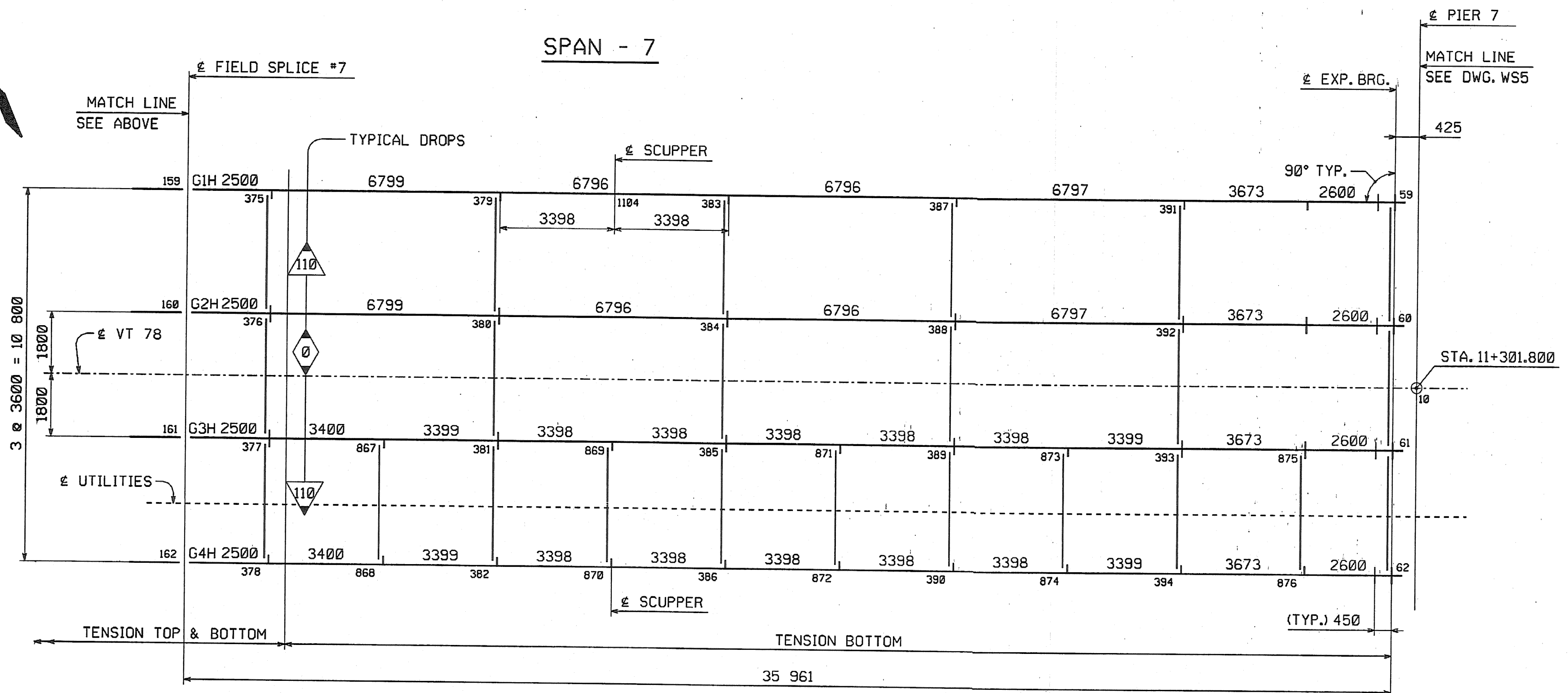
METRIC

METRIC 1. ALL DIMENSIONS ARE IN MILLIMETERS UNLESS OTHERWISE NOTED. 2. ALL WEIGHTS ARE IN KILOGRAMS.

FED. ROAD DIV. NO.	STATE	FED. AID PROJ. NO.
	VT	



CALCULATION PLAN



CALCULATION PLAN

CONTRACT PLAN LENGTHS HAVE BEEN INCREASED AS REQUIRED TO SATISFY MEAN TEMPERATURE LENGTH AT FORTY-FIVE DEGREES WITH FABRICATION AT SIXTY-EIGHT DEGREES MEAN TEMPERATURE

NOTES:
FOR NOTES, SEE DRAWING WS1.
WORK THIS DRAWING WITH DRAWINGS WS3 AND WS5.

NOTE:
THE PURPOSE OF THIS DRAWING IS TO COORDINATE GEOMETRIC CONTROL INFORMATION. THIS DRAWING IS SUBMITTED FOR INFORMATION ONLY AND IS NOT INTENDED FOR SHOP FABRICATION. THIS DRAWING IS FOR REFERENCE ONLY, APPROVAL IS NOT REQUIRED.

SHOP DRAWING REVIEW

REVIEWED AS REQUIRED BY THE CONSTRUCTION CONTRACT DOCUMENTS AND APPROVED, BUT ONLY FOR CONFORMANCE TO THE DESIGN CONCEPT OF THE WORK, AND SUBJECT TO FURTHER LIMITATIONS AND REQUIREMENTS CONTAINED IN THE CONSTRUCTION CONTRACT DOCUMENTS.

REJECTED REVISE AND RESUBMIT FURNISH AS CORRECTED

CORRECTIONS OR COMMENTS MADE ON THE SHOP DRAWINGS DURING THIS REVIEW DO NOT RELIEVE CONTRACTOR FROM COMPLIANCE WITH REQUIREMENTS OF THE DRAWINGS AND DESIGN CONCEPT OF THE PROJECT AND GENERAL COMPLIANCE WITH THE INFORMATION GIVEN IN THE CONTRACT DOCUMENTS. THE CONTRACTOR IS RESPONSIBLE FOR CORRECTING AND CORRELATING ALL QUANTITIES AND DIMENSIONS; SELECTING FABRICATION PROCESSES AND TECHNIQUES OF CONSTRUCTION; COORDINATING HIS WORK WITH THAT OF ALL OTHER TRADES; AND PERFORMING HIS WORK IN A SAFE AND SATISFACTORY MANNER.

VHED Vanessa Hargren Druslin, Inc. Job Number: 5011
Engineers, Planners, and Scientists Reviewed By: JSA
Six Bedford Farms, Milton Rd. Date: 11/16/04
Bedford, NH 03110 603 644 0888

NO.	REVISION	BY	DATE
		JSA	9/17/04

HIGH STEEL STRUCTURES, INC.
1770 Hampstead Road
Lancaster, PA 17605-0008
Phone 717/299-5211
A Division of High Industries, Inc.

WORKSHEET - CALCULATION PLAN
VT 78 OVER MISSISQUOI BAY, BRIDGE NO. 2
VT 78 STA. 10+970.425 TO STA. 12+059.775
TOWNS OF ALBURG AND SWANTON
COUNTIES OF GRAND ISLE AND FRANKLIN
STATE OF VERMONT, AGENCY OF TRANSPORTATION

STATE CONTRACT OR REF. NO. BRF-036-1(1)
CONTRACTOR CIAMBRO CORPORATION
IN CHARGE: GLIDDEN (IH) MADE BY: JSA CHK'D. CS DATE: 8-9-04
CONTRACT NUMBER: VT-04057-1 DRAWING NUMBER: WS4 OF WS12

Scale = 0.0100000 of full size.

PLOTTED: 9/20/2004 10:52:22 PM