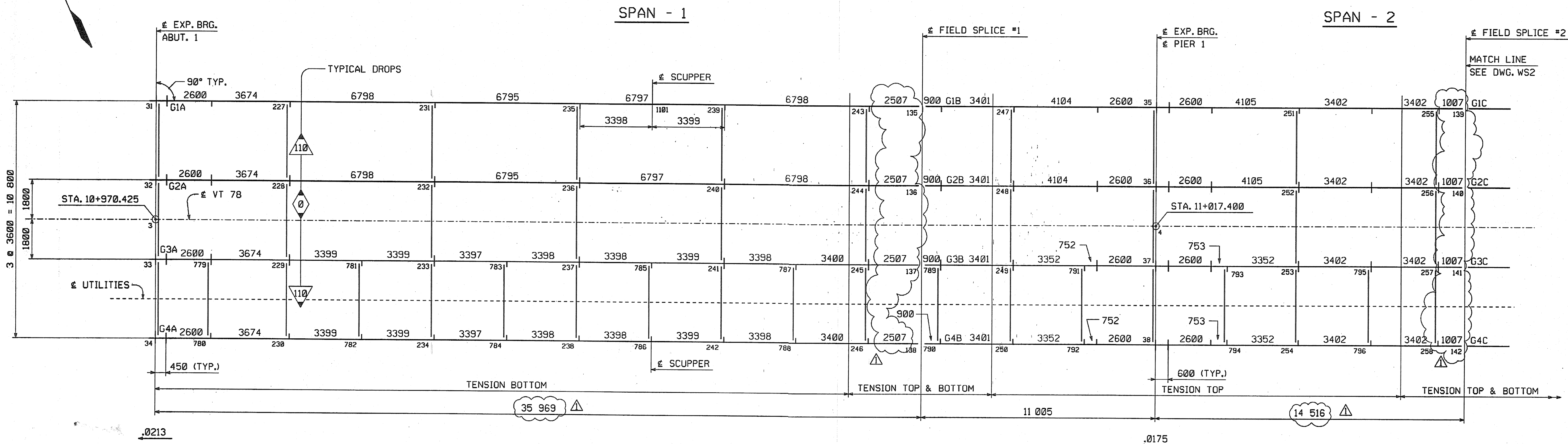


Scale = 0.010000 of full size.



**CALCULATION PLAN**

CONTRACT PLAN LENGTHS HAVE BEEN INCREASED AS REQUIRED TO SATISFY MEAN TEMPERATURE LENGTH AT FORTY-FIVE DEGREES WITH FABRICATION AT SIXTY-EIGHT DEGREES MEAN TEMPERATURE

**NOTES:**

- DIMENSIONS ON PLAN ALONG GIRDERS ARE GIVEN TO THE CHORD AT THE BOTTOM OF WEB IN FULLY CAMBERED POSITION. ALL OTHER DIMENSIONS ARE GIVEN HORIZONTALLY.
- DIMENSIONS PLACED ON THE GIRDER LINES REPRESENT CROSSFRAME AND STIFFENER SPACING.
- FIGURES GIVEN THUS:  $\Delta$  ARE THE GRADES OF THE GIRDERS AT THE BEARINGS IN FINAL POSITION; ARROW POINTS DOWNGRADE.
- ALL STIFFENER AND CONNECTION PLATE SPACINGS ARE GIVEN TO  $\Delta$  PLATE.
- ENDS OF GIRDERS AND ALL BEARING STIFFENERS TO BE VERTICAL IN FINAL POSITION.
- ALL STEEL TO BE AASHTO M270M GRADE 345W (U.N.).
- ALL FIELD CONNECTIONS TO BE MADE WITH  $\frac{7}{8}$ " H.S. (A325 TYPE 3) BOLTS (U.N.).
- ALL FIELD CONNECTIONS IN PAINTED AREA TO BE MADE WITH  $\frac{7}{8}$ " H.S. (A325 TYPE 1) BOLTS, MECH. GALV. TO ASTM B-695 CLASS 50.
- FIGURES GIVEN THUS:  $\nabla$  ARE THE DIFFERENCES IN ELEVATIONS OF GIRDERS (IN THE PLANE OF THE CROSSFRAME IN FINAL POSITION) AT CROSSFRAMES; ARROW POINTS TOWARD LOW GIRDER.
- ALL STATIONS ARE GIVEN IN METERS.
- FOR TYPICAL DETAIL LAYOUTS, SEE DRAWINGS PREFIXED 'TD'.

**\*\*NOTE\*\***

THE PURPOSE OF THIS DRAWING IS TO COORDINATE GEOMETRIC CONTROL INFORMATION. THIS DRAWING IS SUBMITTED FOR INFORMATION ONLY AND IS NOT INTENDED FOR SHOP FABRICATION. THIS DRAWING IS FOR REFERENCE ONLY, APPROVAL IS NOT REQUIRED.

SHOP DRAWING REVIEW	
<input checked="" type="checkbox"/> REVIEWED AS REQUIRED BY THE CONSTRUCTION CONTRACT DOCUMENTS AND APPROVED, BUT ONLY FOR COMPLIANCE TO THE DESIGN CONCEPT OF THE WORK, AND SUBJECT TO FURTHER LIMITATIONS AND REQUIREMENTS CONTAINED IN THE CONSTRUCTION CONTRACT DOCUMENTS.	
<input type="checkbox"/> REJECTED	<input type="checkbox"/> REVISE AND RESUBMIT
CORRECTIONS OR COMMENTS MADE ON THE SHOP DRAWINGS DURING THIS REVIEW DO NOT RELIEVE CONTRACTOR FROM COMPLIANCE WITH REQUIREMENTS OF THE DRAWINGS AND SPECIFICATIONS. THIS CHECK IS ONLY FOR REVIEW OF GENERAL COMPLIANCE WITH THE DESIGN CONCEPT OF THE PROJECT AND GENERAL COMPLIANCE WITH THE INFORMATION GIVEN IN THE CONTRACT DOCUMENTS. THE CONTRACTOR IS RESPONSIBLE FOR CORRECTING AND CORRELATING ALL QUANTITIES AND DIMENSIONS; SELECTING FABRICATION PROCESSES AND TECHNIQUES OF CONSTRUCTION; COORDINATING HIS WORK WITH THAT OF ALL OTHER TRADES; AND PERFORMING HIS WORK IN A SAFE AND SATISFACTORY MANNER.	
<b>VHB</b> Vanasse Hangen Brustlin, Inc. Engineers, Planners, and Scientists Six Bedford Farms, Kilton Rd. Bedford, NH 03110 603 844 0999	Job Number: <u>5011</u> Reviewed By: <u>SMH</u> Date: <u>11/15/04</u>

$\Delta$			
$\Delta$			
$\Delta$	INCREASE LENGTHS TO SATISFY REQUIREMENTS FOR LENGTH @ MEAN TEMPERATURE OF 45°F.	JSA	9/17/04
NO.	REVISION	BY	DATE
<b>HIGH STEEL STRUCTURES, INC.</b>  1770 Hempstead Road Lancaster, PA 17605-0008 Phone 717/299-5211 A Division of High Industries, Inc.			
WORKSHEET ~ CALCULATION PLAN			
VT 78 OVER MISSISQUOI BAY, BRIDGE NO. 2			
VT 78 STA. 10+970.425 TO STA. 12+059.775			
TOWNS OF ALBURG AND SWANTON			
COUNTIES OF GRAND ISLE AND FRANKLIN			
STATE OF VERMONT, AGENCY OF TRANSPORTATION			
STATE CONTRACT OR REF. NO. BRF-036-1(1)			
CONTRACTOR <b>CANBRO CORPORATION</b>			
IN CHARGE: <u>GLIDDEN (IH)</u>	MADE BY: <u>JSA</u>	CHK'D. BY: <u>CS</u>	DATE: <u>8-9-04</u>
CONTRACT NUMBER: <u>VT-04057-1,2&amp;3</u>		DRAWING NUMBER: <u>WS1 OF WS12</u>	