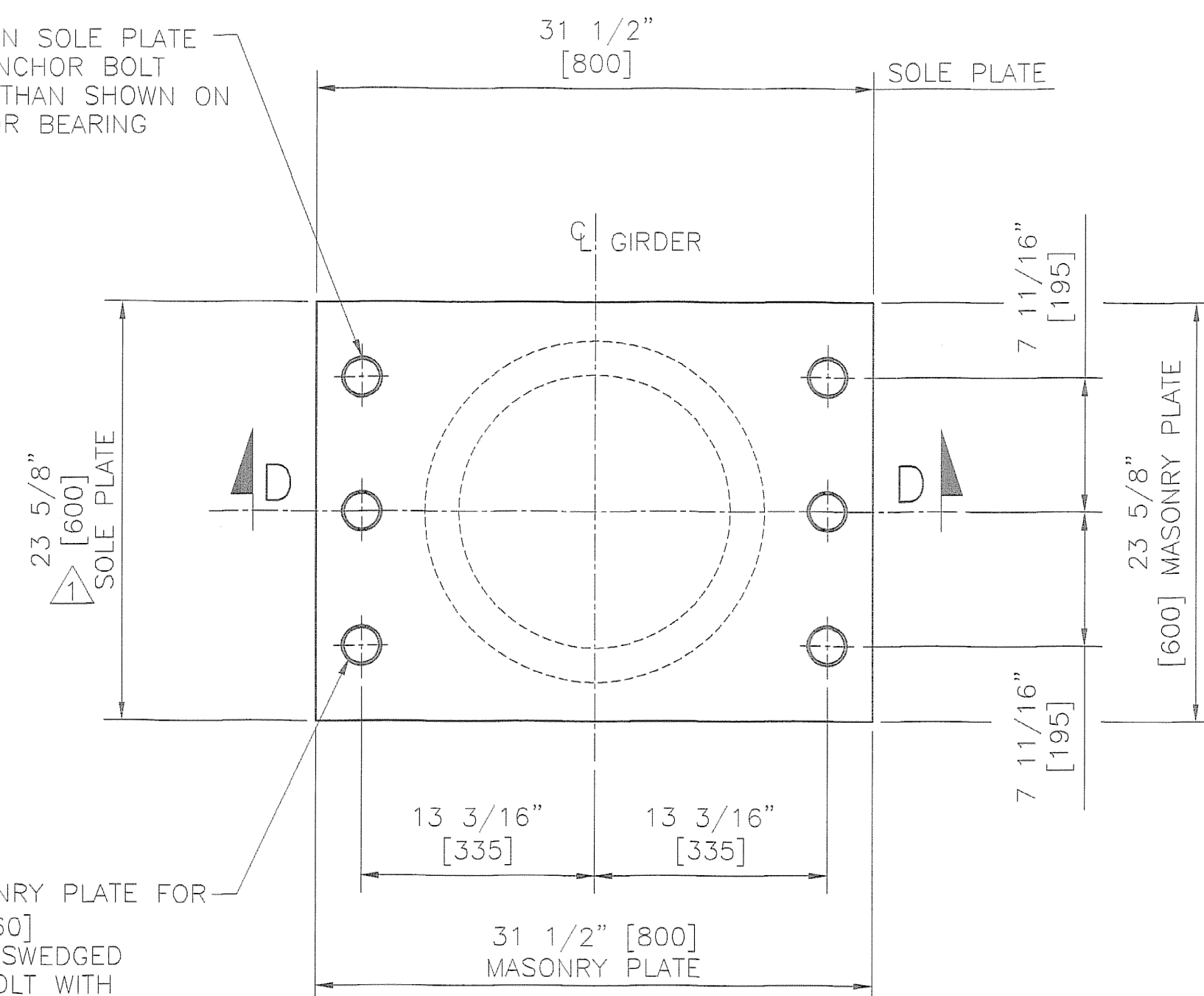
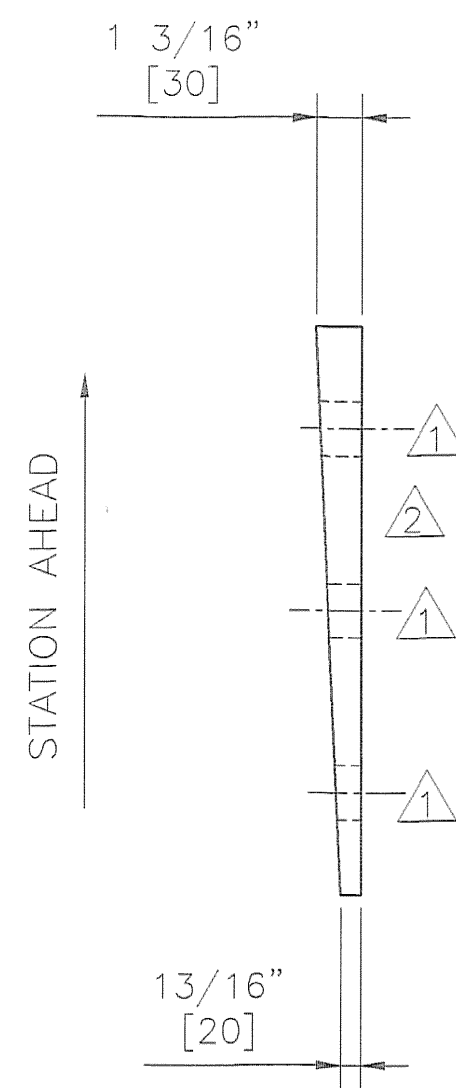


2 1/4" [57] DIA. HOLE IN SOLE PLATE FOR 1 1/2" [38] DIA. ANCHOR BOLT (NOTE: HOLE IS LARGER THAN SHOWN ON THE PLANS TO ALLOW FOR BEARING ROTATION)

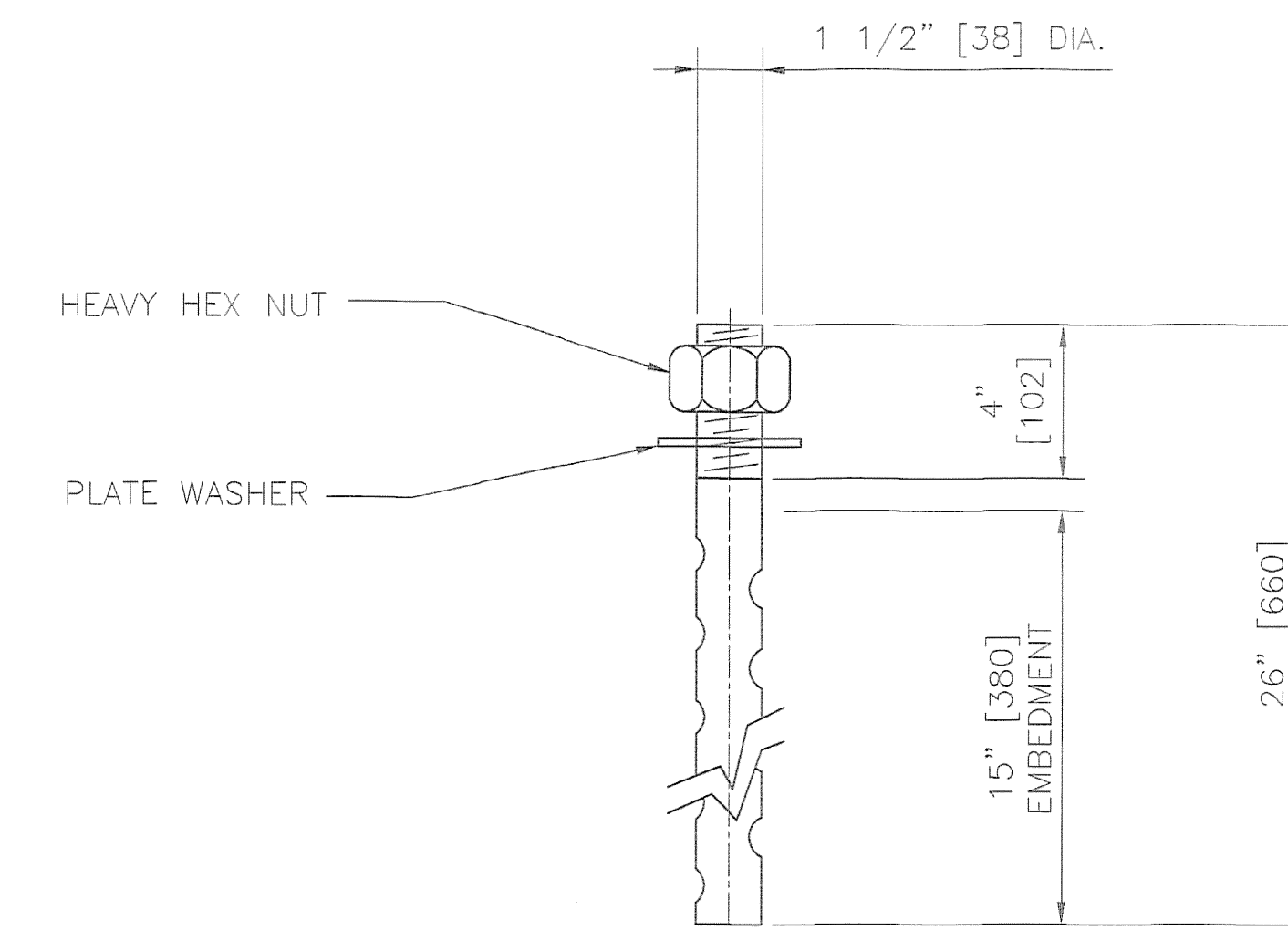


PLAN VIEW

2" [50] DIA. HOLE IN MASONRY PLATE FOR 1 1/2" [38] DIA. x 26" [660] LONG ASTM F.1554 GR. 55 SWEDGED AND GALVANIZED ANCHOR BOLT WITH ONE HEAVY HEX NUT AND ONE 3/8" [10] x 3 1/4" [83] DIA. PLATE WASHER
 ALL GALVANIZED

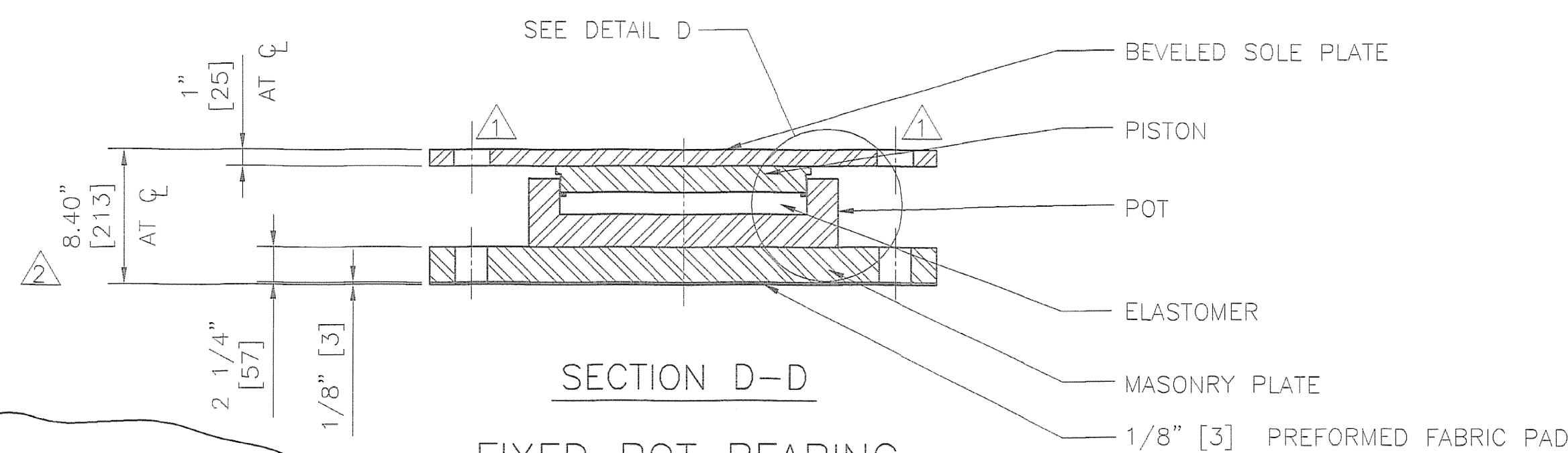


SIDE ELEVATION
 SOLE PLATE ONLY



ANCHOR BOLT DETAIL

1 1/2" [38] DIA. x 26" [660] LONG ASTM F.1554 GR.55 SWEDGED ANCHOR BOLT WITH 4" [102] THREAD ONE END, ONE HEAVY HEX NUT AND ONE 3/8" [10] x 3 1/4" [83] DIA. PLATE WASHER W/ 1 3/4" [45] DIA. HOLE
 ALL GALVANIZED



SECTION D-D
 FIXED POT BEARING

LOCATION - PIERS 3 & 4
 GIRDERS 1 THROUGH 4
 TOTAL QUANTITY REQUIRED - 8
 TOTAL VERTICAL CAPACITY - 650 KIPS [2887 kN]
 TOTAL HORIZONTAL CAPACITY - 174 KIPS [774 kN]
 TOTAL LONGITUDINAL MOVEMENT = 0" [0 mm]
 TOTAL TRANSVERSE MOVEMENT = 0" [0 mm]
 ROTATION CAPACITY - 0.025 RADIAN

NOTE:

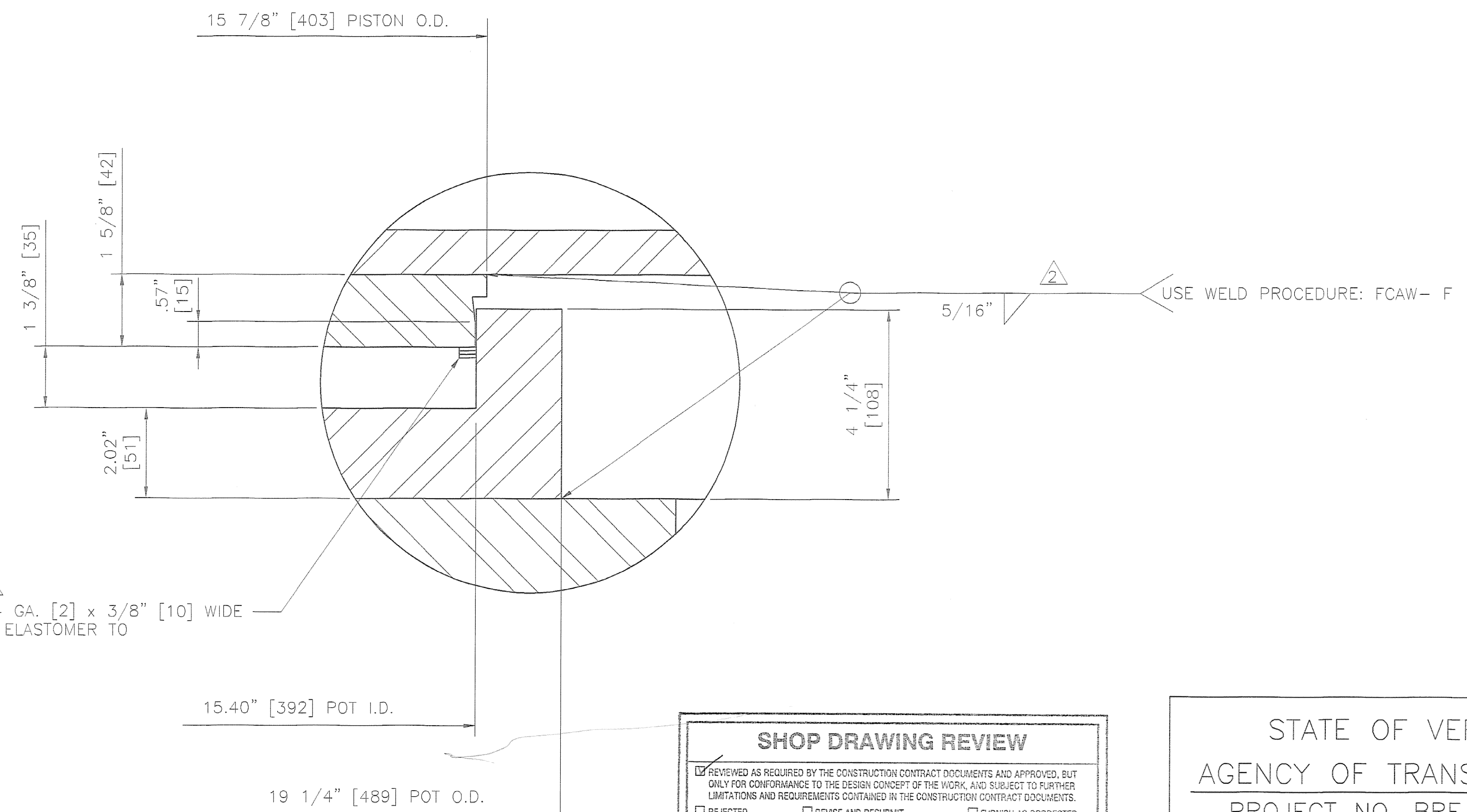
OVERALL BEARING HEIGHTS DIFFER FROM THOSE SHOWN ON THE CONTRACT PLANS. CONTRACTOR SHALL RECOMPUTE ALL BEARING SEAT ELEVATIONS TO ACCURATELY REFLECT BEARINGS SUPPLIED.

BEARING MATERIALS

STEEL - ASTM A.709 GR. 50 ZINC METALLIZED
 ELASTOMER - AASHTO 50 DUROMETER NEOPRENE
 BRASS RINGS - ASTM B.36 HALF HARD
 PREFORMED FABRIC PAD - AASHTO 18.4.9.1, DIV. II
 ANCHOR BOLTS - ASTM F.1554 GR. 55 GALVANIZED

BEARING DATA AND NOTES

- ALL MATERIAL USED IN THE MANUFACTURE OF THESE BEARINGS SHALL BE MADE IN THE U.S.A.
- BEARINGS SHALL BE SHIPPED AS COMPLETE UNITS AND SHALL BE MARKED FOR IDENTIFICATION WITH LOCATION. LOCATIONS & STATION AHEAD SHALL BE DIE STAMPED IN ONE CORNER OF SOLE PLATE IN A LOCATION VISIBLE AFTER INSTALLATION. THICK END OF BEARING SOLE PLATE SHALL BE MARKED @
- ALL EDGES OF STEEL PLATES SHALL BE ROUNDED TO A 1/16" [1.6] RADIUS.
- LOCATION OF FABRICATION PLANT - 70 SOUTH STREET WALPOLE, MA 02081
- COSMEC, INC. REPRESENTATIVE: MR. MATT McANDREWS (508) 668-6600
- ALL STEEL SURFACES SHALL BE ZINC METALLIZED IN ACCORDANCE WITH AWS C 2.18. ALL EXPOSED SURFACES SHALL RECEIVE 6 MILS AND THE INTERIOR OF POT AND UNDERSIDE OF PISTON SHALL RECEIVE 2 MILS. AREAS DAMAGED DURING FIELD WELDING SHALL BE REPAIRED IN ACCORDANCE WITH VT A.O.T SUPPLEMENTAL SPECIFICATION 513.
- UNDER NO CIRCUMSTANCES SHALL THE BEARINGS BE DISASSEMBLED WITHOUT EXPRESS WRITTEN AUTHORIZATION FROM COSMEC, INC. UNAUTHORIZED DISASSEMBLY MAY CAUSE MALFUNCTION OF UNIT.



DETAIL D

SHOP DRAWING REVIEW					
<input checked="" type="checkbox"/> REVIEWED AS REQUIRED BY THE CONSTRUCTION CONTRACT DOCUMENTS AND APPROVED, BUT ONLY FOR CONFORMANCE TO THE DESIGN CONCEPT OF THE WORK, AND SUBJECT TO FURTHER LIMITATIONS AND REQUIREMENTS CONTAINED IN THE CONSTRUCTION CONTRACT DOCUMENTS.					
<input type="checkbox"/> REJECTED <input type="checkbox"/> REVISE AND RESUBMIT <input type="checkbox"/> FURNISH AS CORRECTED					
CORRECTIONS OR COMMENTS MADE ON THE SHOP DRAWINGS DURING THIS REVIEW DO NOT RELIEVE CONTRACTOR FROM COMPLIANCE WITH REQUIREMENTS OF THE DRAWINGS AND SPECIFICATIONS. THIS CHECK IS ONLY FOR REVIEW OF GENERAL CONFORMANCE WITH THE DESIGN CONCEPT OF THE PROJECT AND GENERAL COMPLIANCE WITH THE INFORMATION GIVEN IN THE CONTRACT DOCUMENTS. THE CONTRACTOR IS RESPONSIBLE FOR CONFIRMING AND CORRELATING ALL QUANTITIES AND DIMENSIONS, SELECTING FABRICATION PROCESSES AND TECHNIQUES OF CONSTRUCTION COORDINATING HIS WORK WITH THAT OF ALL OTHER TRADES, AND PERFORMING HIS WORK IN A SAFE AND SATISFACTORY MANNER.					
VHIB Vanasse Hangen Brustlin, Inc. Engineers, Planners, and Scientists 66 Bulfinch Square, 18th Floor Boston, MA 02109 617-552-0888			Job Number: 52911 Reviewed By: SMH Date: 11-11-2004		

STATE OF VERMONT
 AGENCY OF TRANSPORTATION
 PROJECT NO. BRF 036-1(1)
 TOWNS OF ALBURG-SWANTON
 VT 78 OVER MISSISQUOI BAY
 BRIDGE NO. 2
 PIERS 3 & 4
 POT BEARING DETAILS

COSMEC, INC. 70 SOUTH STREET WALPOLE, MA 02081

SCALE: N.T.S.	DRAWN BY: MDM	CHECKED BY: NH
SHEET 6 OF 7	DATE: 7/27/04	DATE: 8/2/04
COSMEC POT BEARINGS		
CUSTOMER: CIAMBRO CORP.	S.O. NUMBER: 60093	DRAWING NUMBER: 4263
REV. 1	REMOVED RECESSES, ADDED WELD, REV. NOTE 2, REV ANCHOR BOLT, OVERALL HEIGHT & AS NOTED	BY: MK DATE: 10/13/04 CK'D: NH DATE: 10/14/04
REV. 2	ADDED HOLES TO SIDE ELEVATION & SECTION D-D & CHANGED THE DIM ON THE SOLE PLATE	BY: MK DATE: 8/11/04 CK'D: DATE: