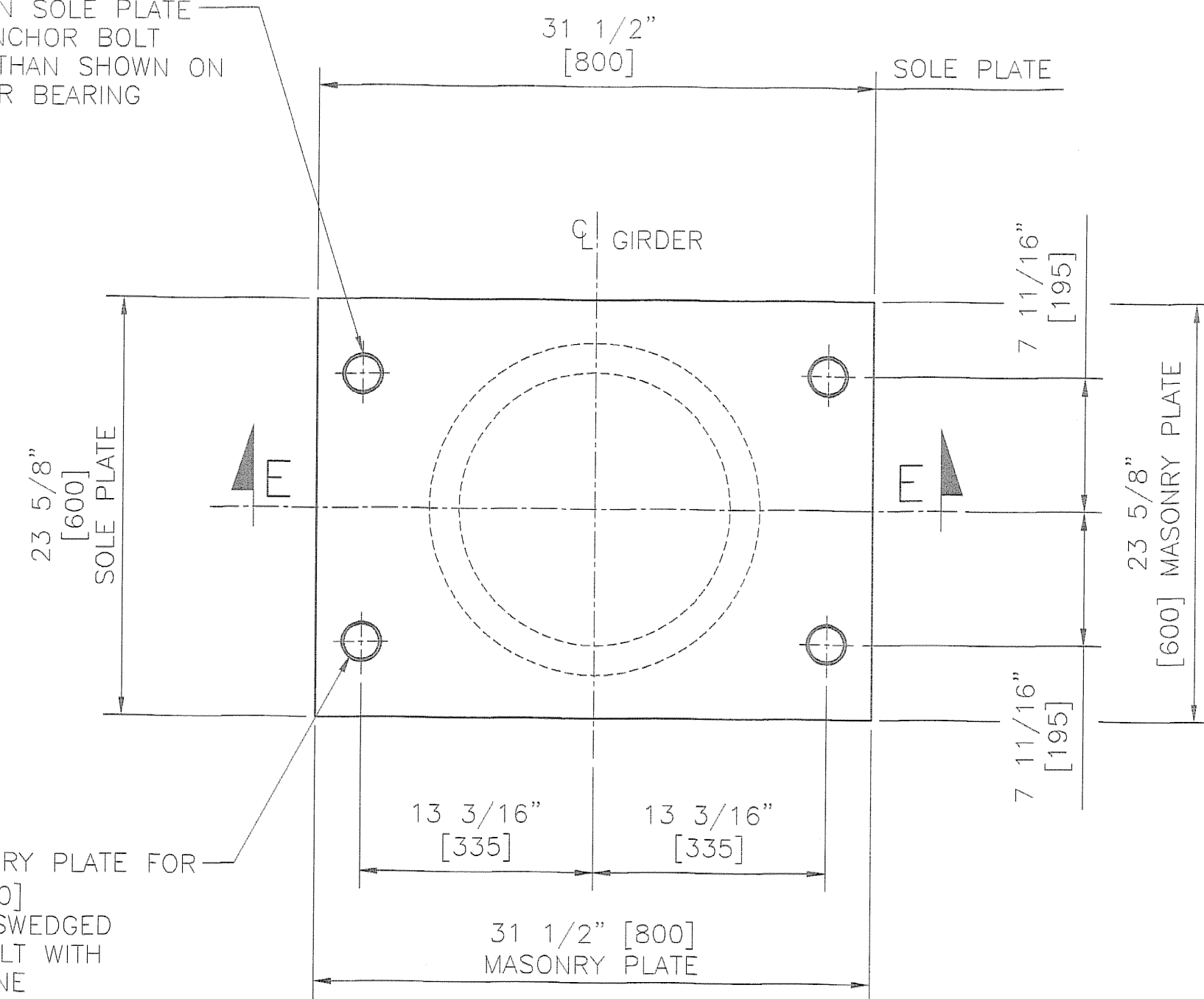
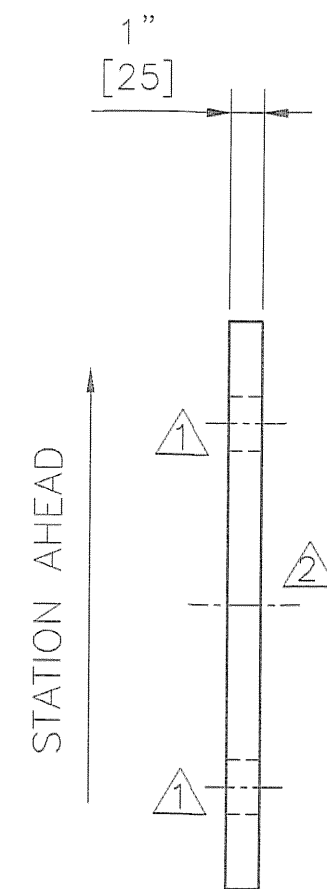


2 1/4" [57] DIA. HOLE IN SOLE PLATE FOR 1 1/2" [38] DIA. ANCHOR BOLT (NOTE: HOLE IS LARGER THAN SHOWN ON THE PLANS TO ALLOW FOR BEARING ROTATION)

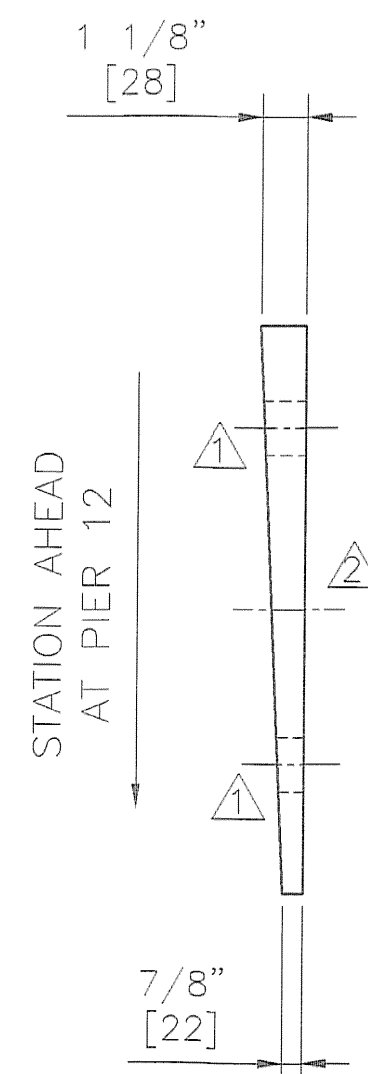


PLAN VIEW

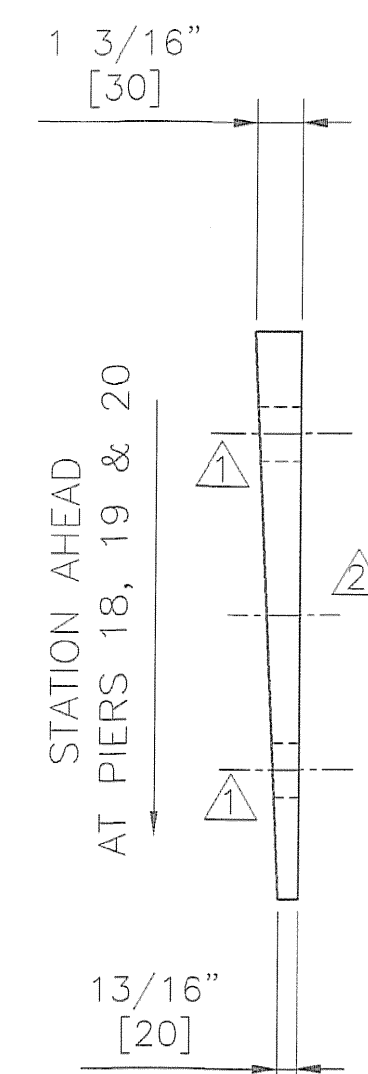
2" [50] DIA. HOLE IN MASONRY PLATE FOR 1 1/2" [38] DIA. x 26" [660] LONG ASTM F.1554 GR. 55 SWEDGED AND GALVANIZED ANCHOR BOLT WITH ONE HEAVY HEX NUT AND ONE 3/8" [10] x 3 1/4" [83] DIA. PLATE WASHER  
 ALL GALVANIZED



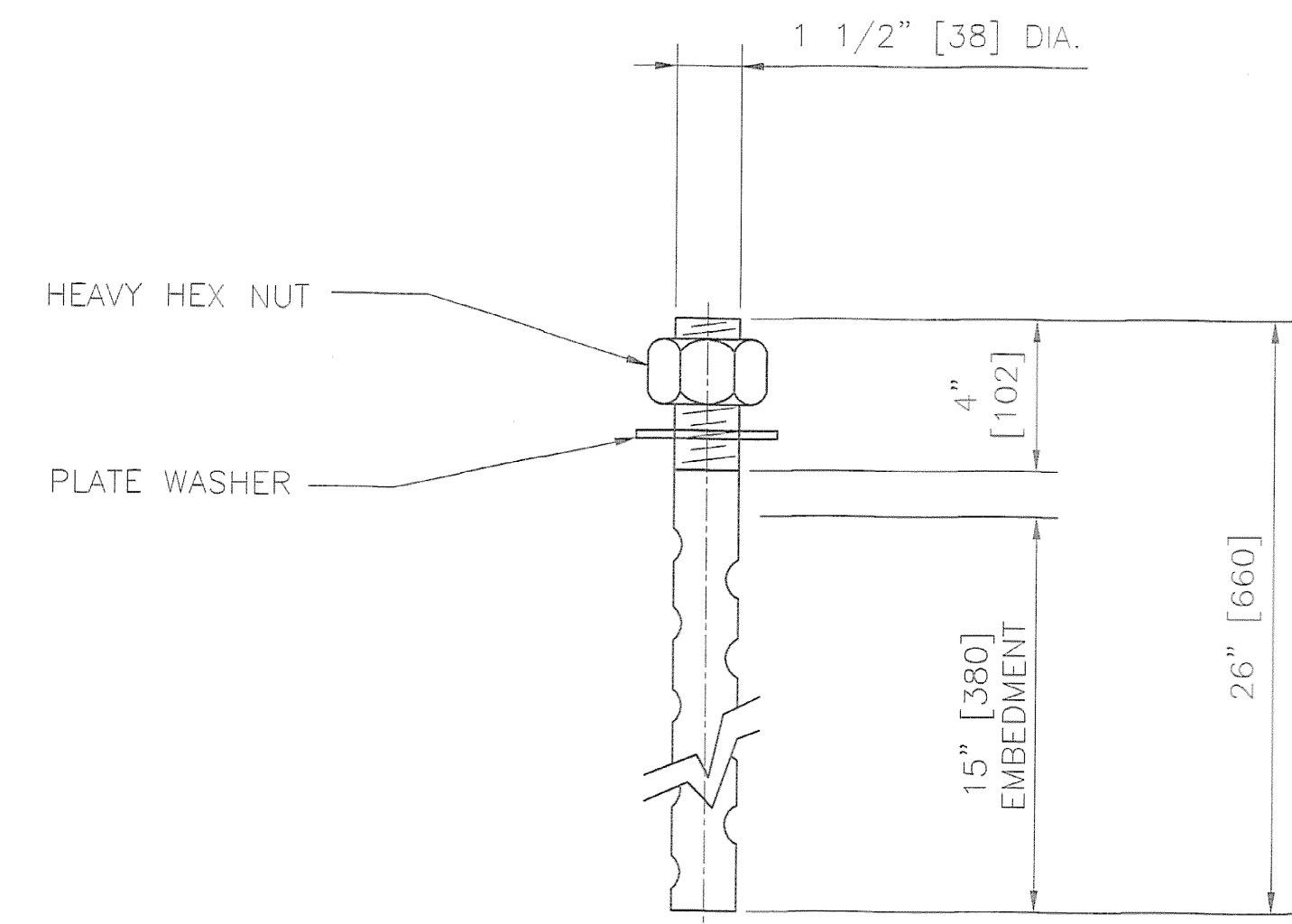
SIDE ELEVATION  
 SOLE PLATE ONLY  
 PIERS 10 & 11



SIDE ELEVATION  
 SOLE PLATE ONLY  
 PIER 12

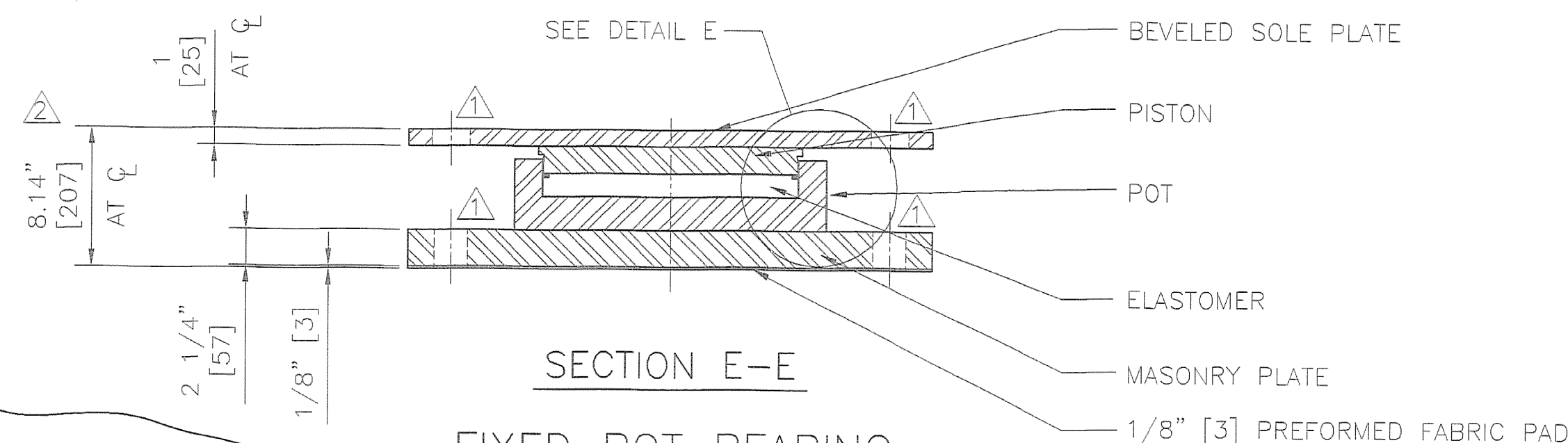


SIDE ELEVATION  
 SOLE PLATE ONLY  
 PIERS 18, 19 & 20



ANCHOR BOLT DETAIL

1 1/2" [38] DIA. x 26" [660] LONG  
 ASTM F.1554 GR. 55 SWEDGED ANCHOR BOLT WITH 4" [102] THREAD ONE END, ONE HEAVY HEX NUT AND ONE 3/8" [10] x 3 1/4" [83] DIA. PLATE WASHER W/ 1 3/4" [45] DIA. HOLE  
 ALL GALVANIZED



SECTION E-E  
 FIXED POT BEARING

LOCATION - PIERS 10, 11, 12, 18, 19 & 20  
 GIRDERS 1 THROUGH 4

TOTAL QUANTITY REQUIRED - 24

TOTAL VERTICAL CAPACITY - 652 KIPS [2900 kN]  
 TOTAL HORIZONTAL CAPACITY - 136 KIPS [601 kN]  
 TOTAL LONGITUDINAL MOVEMENT = 0" [0 mm]  
 TOTAL TRANSVERSE MOVEMENT = 0" [0 mm]  
 ROTATION CAPACITY - 0.025 RADIANS

NOTE:

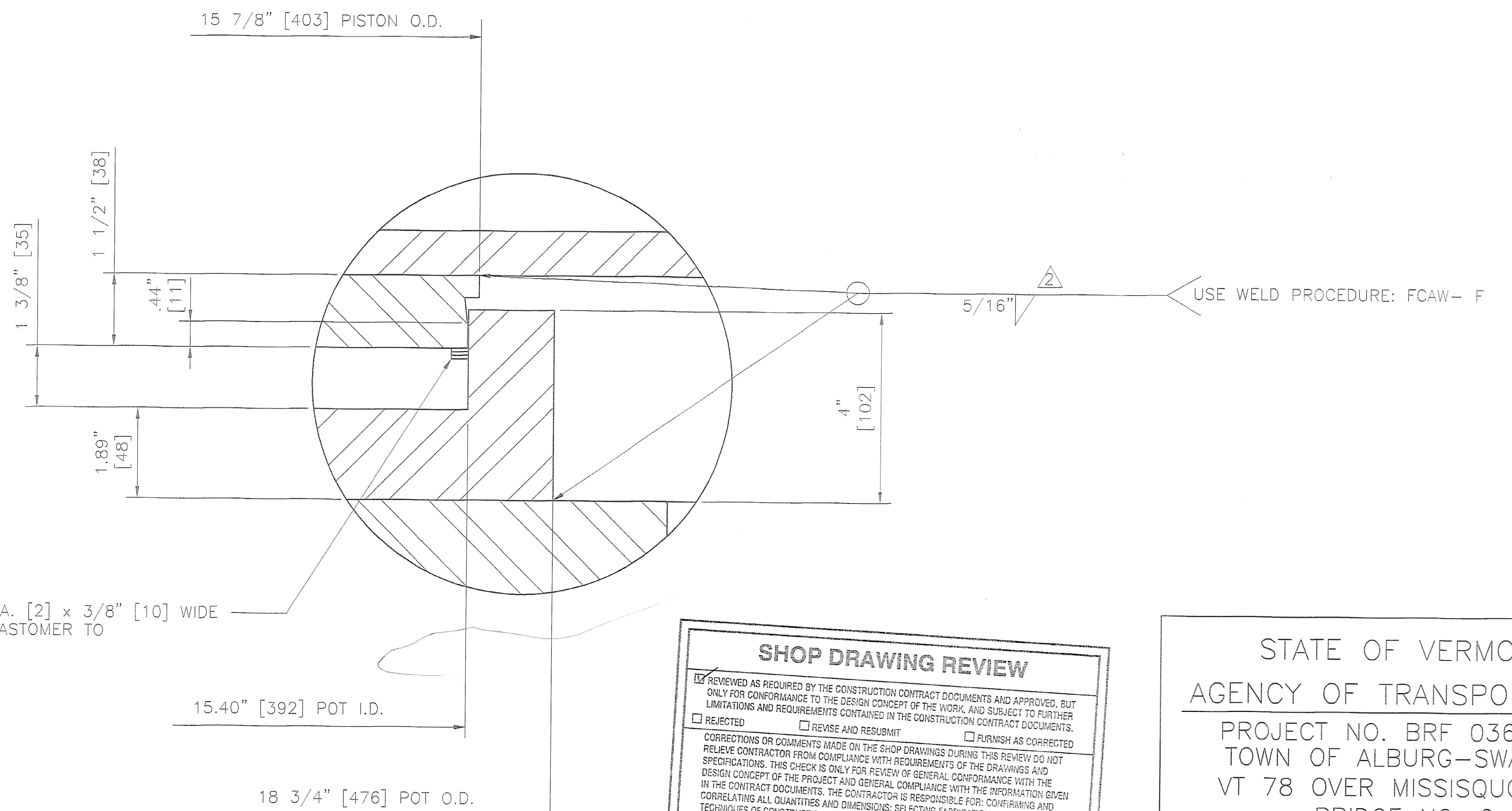
OVERALL BEARING HEIGHTS DIFFER FROM THOSE SHOWN ON THE CONTRACT PLANS. CONTRACTOR SHALL RECOMPUTE ALL BEARING SEAT ELEVATIONS TO ACCURATELY REFLECT BEARINGS SUPPLIED.

BEARING MATERIALS

STEEL - ASTM A.709 GR. 50 ZINC METALLIZED  
 ELASTOMER - AASHTO 50 DUROMETER NEOPRENE  
 BRASS RINGS - ASTM B.36 HALF HARD  
 PREFORMED FABRIC PAD - AASHTO 18.4.9.1, DIV. II  
 ANCHOR BOLTS - ASTM F.1554 GR. 55 GALVANIZED

BEARING DATA AND NOTES

- ALL MATERIAL USED IN THE MANUFACTURE OF THESE BEARINGS SHALL BE MADE IN THE U.S.A.
- BEARINGS SHALL BE SHIPPED AS COMPLETE UNITS AND SHALL BE MARKED FOR IDENTIFICATION WITH LOCATION, LOCATIONS & STATION AHEAD SHALL BE DIE STAMPED IN ONE CORNER OF SOLE PLATE IN A LOCATION VISIBLE AFTER INSTALLATION. THICK END OF BEARING SOLE PLATE SHALL BE MARKED  $\otimes$
- ALL EDGES OF STEEL PLATES SHALL BE ROUNDED TO A 1/16" [1.6] RADIUS.
- LOCATION OF FABRICATION PLANT - 70 SOUTH STREET WALPOLE, MA 02081
- COSMEC, INC. REPRESENTATIVE: MR. MATT McANDREWS (508) 668-6600
- ALL STEEL SURFACES SHALL BE ZINC METALLIZED IN ACCORDANCE WITH AWS C 2.18. ALL EXPOSED SURFACES SHALL RECEIVE 6 MILS AND THE INTERIOR OF POT AND UNDERSIDE OF PISTON SHALL RECEIVE 2 MILS. AREAS DAMAGED DURING FIELD WELDING SHALL BE REPAIRED IN ACCORDANCE WITH VT A.O.T SUPPLEMENTAL SPECIFICATION 513.
- UNDER NO CIRCUMSTANCES SHALL THE BEARINGS BE DISASSEMBLED WITHOUT EXPRESS WRITTEN AUTHORIZATION FROM COSMEC, INC. UNAUTHORIZED DISASSEMBLY MAY CAUSE MALFUNCTION OF UNIT.



DETAIL E

FLAT BRASS SEALING RINGS 14 GA. [2] x 3/8" [10] WIDE  
 QTY. 3 PER BEARING. RECESS ELASTOMER TO ACCOMMODATE RINGS

**SHOP DRAWING REVIEW**

REMOVED AS REQUIRED BY THE CONSTRUCTION CONTRACT DOCUMENTS AND APPROVED, BUT ONLY FOR CONFORMANCE TO THE DESIGN CONCEPT OF THE WORK AND SUBJECT TO FURTHER LIMITATIONS AND REQUIREMENTS CONTAINED IN THE CONSTRUCTION CONTRACT DOCUMENTS.

REJECTED  REVISE AND RESUBMIT  FURNISH AS CORRECTED

CORRECTIONS OR COMMENTS MADE ON THE SHOP DRAWINGS DURING THIS REVIEW DO NOT RELIEVE CONTRACTOR FROM COMPLIANCE WITH REQUIREMENTS OF THE DRAWINGS AND SPECIFICATIONS. THIS CHECK IS ONLY FOR REVIEW OF GENERAL CONFORMANCE WITH THE DESIGN CONCEPT OF THE PROJECT AND GENERAL COMPLIANCE WITH THE INFORMATION GIVEN IN THE CONTRACT DOCUMENTS. THE CONTRACTOR IS RESPONSIBLE FOR CONFIRMING AND CORRELATING ALL QUANTITIES AND DIMENSIONS; SELECTING FABRICATION PROCESSES AND TECHNIQUES OF CONSTRUCTION; COORDINATING HIS WORK WITH THAT OF ALL OTHER TRADES; AND PERFORMING HIS WORK IN A SAFE AND SATISFACTORY MANNER.

VHB Vanasse Hangen Brustlin, Inc.  
 Engineers, Planners, and Scientists  
 66 Bedford Farms, Khan Rd.  
 Boston, MA 02132 617-614-2588

Job Number: 50911  
 Reviewed By: [Signature]  
 Date: 11-11-2004

STATE OF VERMONT  
 AGENCY OF TRANSPORTATION

PROJECT NO. BRF 036-1(1)  
 TOWN OF ALBURG-SWANTON  
 VT 78 OVER MISSISQUOI BAY  
 BRIDGE NO. 2

PIERS 10, 11, 12, 18, 19 & 20  
 POT BEARING DETAILS

COSMEC, INC. 70 SOUTH STREET WALPOLE, MA. 02081

SCALE: N.T.S.	DRAWN BY: MCM	CHECKED BY: NH
SHEET 5 OF 7	DATE: 7/27/04	DATE: 8/2/04
<b>COSMEC POT BEARINGS</b>		
CUSTOMER: CIAMBRO CORP.	S.O. NUMBER: 60093	DRAWING NUMBER: 4262
		REV. 2

REV.	DESCRIPTION	BY	DATE	CHK'D	DATE
1	REMOVED RECESSES, ADDED WELD, REV. NOTE 2, REV. ANCHOR BOLT, OVERALL HEIGHT AS NOTED	MK	10/13/04	NH	10/14/04
2	ADDED HOLES TO SIDE ELEVATION & SECTION E-E & CHANGED HOLES IN SECTION E-E TO HIDDEN HOLES	MK	8/11/04		