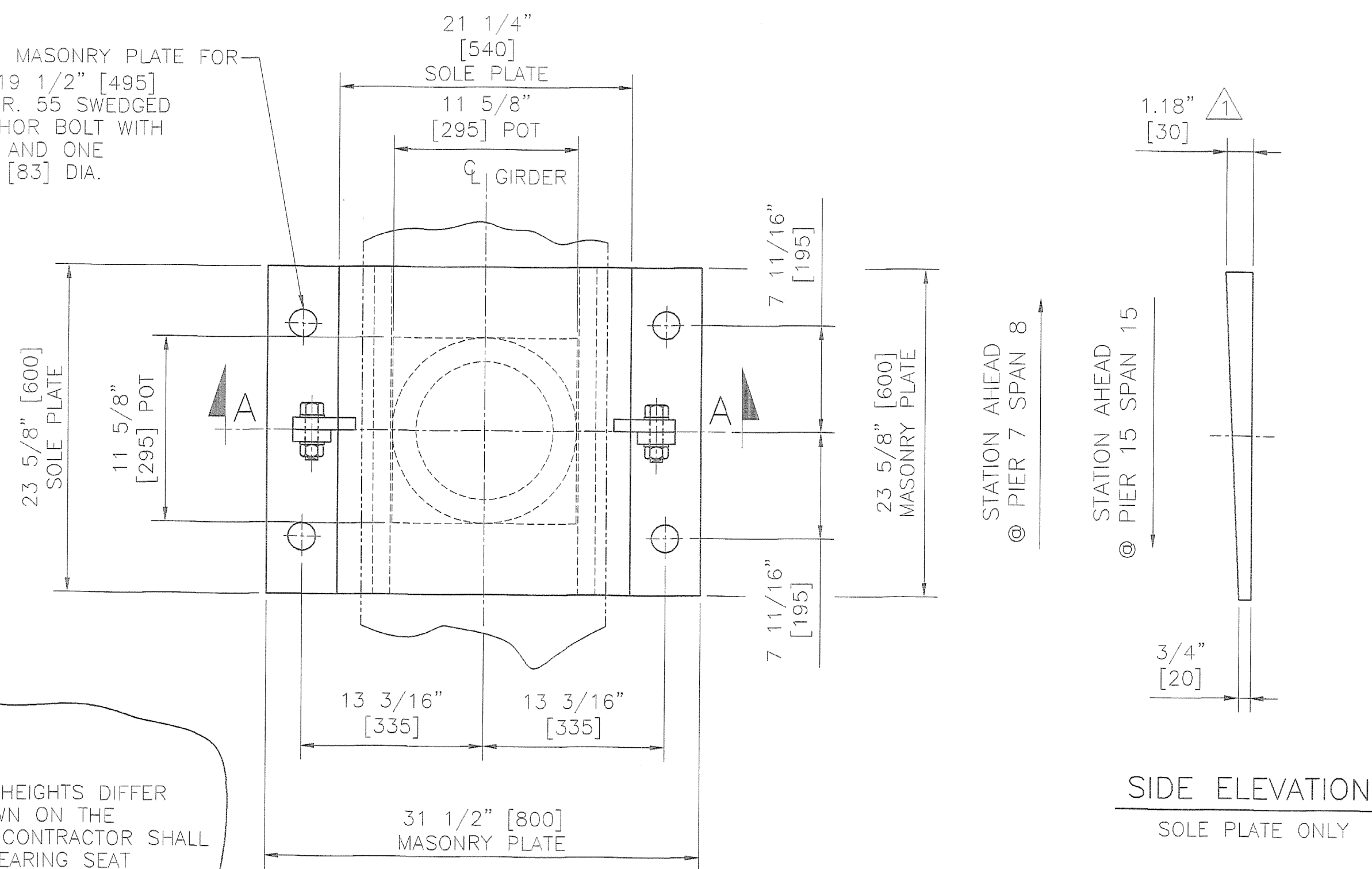
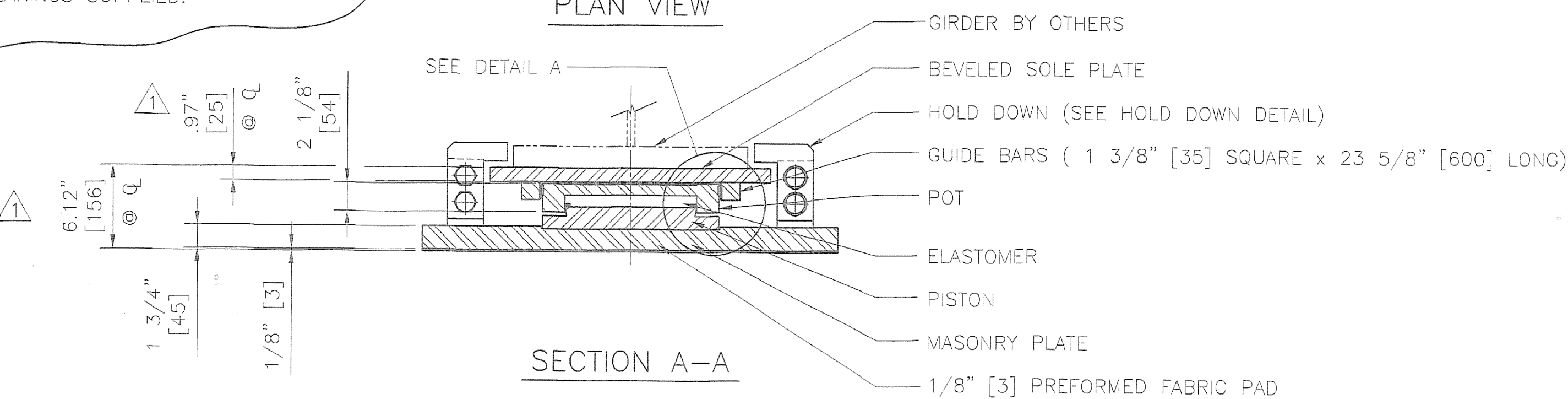


2" [50] DIA. HOLE IN MASONRY PLATE FOR 1 1/2" [38] DIA. x 19 1/2" [495] LONG ASTM F.1554 GR. 55 SWEDGED AND GALVANIZED ANCHOR BOLT WITH ONE HEAVY HEX NUT AND ONE 3/8" [10] x 3 1/4" [83] DIA. PLATE WASHER ALL GALVANIZED



**NOTE:**  
OVERALL BEARING HEIGHTS DIFFER FROM THOSE SHOWN ON THE CONTRACT PLANS. CONTRACTOR SHALL RECOMPUTE ALL BEARING SEAT ELEVATIONS TO ACCURATELY REFLECT BEARINGS SUPPLIED.



**GUIDED EXPANSION POT BEARING**

LOCATION - PIER 7, SPAN 8 & PIER 15, SPAN 15  
GIRDERS 1 THROUGH 4

TOTAL QUANTITY REQUIRED - 8

TOTAL VERTICAL CAPACITY - 272 KIPS [1206 kN]  
TOTAL HORIZONTAL CAPACITY - 32 KIPS [142 kN]  
TOTAL LONGITUDINAL MOVEMENT = 9.13" [232mm]  
TOTAL TRANSVERSE MOVEMENT = 1/4" [6mm]  
ROTATION CAPACITY - 0.025 RADIAN

**BEARING MATERIALS**

STEEL - ASTM A.709 GR. 50 ZINC METALLIZED  
STAINLESS STEEL - ASTM A.240 TYPE 304, 10 RMS FINISH OR LESS  
PTFE - ASTM D.4894 VIRGIN UNFILLED  
ELASTOMER - AASHTO 50 DUROMETER NEOPRENE  
BRASS RINGS - ASTM B.36 HALF HARD  
PREFORMED FABRIC PAD - AASHTO 18.4.9.1, DIV. II  
HOLD DOWN BOLTS - ASTM A.325 TYPE 1 GALVANIZED  
ANCHOR BOLTS - ASTM F.1554 GR. 55 GALVANIZED

**BEARING DATA AND NOTES**

- ALL MATERIAL USED IN THE MANUFACTURE OF THESE BEARINGS SHALL BE MADE IN THE U.S.A.
- BEARINGS SHALL BE SHIPPED AS COMPLETE UNITS AND SHALL BE MARKED FOR IDENTIFICATION WITH LOCATION. LOCATIONS & STATION AHEAD SHALL BE DIE STAMPED IN ONE CORNER OF SOLE PLATE IN A LOCATION VISIBLE AFTER INSTALLATION. THICK END OF BEARING SOLE PLATE SHALL BE MARKED ⊗
- ALL EDGES OF STEEL PLATES SHALL BE ROUNDED TO A 1/16" [1.6] RADIUS.
- LOCATION OF FABRICATION PLANT - 70 SOUTH STREET WALPOLE, MA 02081
- COSMEC, INC. REPRESENTATIVE: MR. MATT McANDREWS (508) 668-6600
- ALL STEEL SURFACES SHALL BE ZINC METALLIZED IN ACCORDANCE WITH AWS C 2.18. ALL EXPOSED SURFACES SHALL RECEIVE 6 MILS AND THE INTERIOR OF POT AND UNDERSIDE OF PISTON SHALL RECEIVE 2 MILS. AREAS DAMAGED DURING FIELD WELDING SHALL BE REPAIRED IN ACCORDANCE WITH VT A.O.T SUPPLEMENTAL SPECIFICATION 513.
- UNDER NO CIRCUMSTANCES SHALL THE BEARINGS BE DISASSEMBLED WITHOUT EXPRESS WRITTEN AUTHORIZATION FROM COSMEC, INC. UNAUTHORIZED DISASSEMBLY MAY CAUSE MALFUNCTION OF UNIT.

**SHOP DRAWING REVIEW**

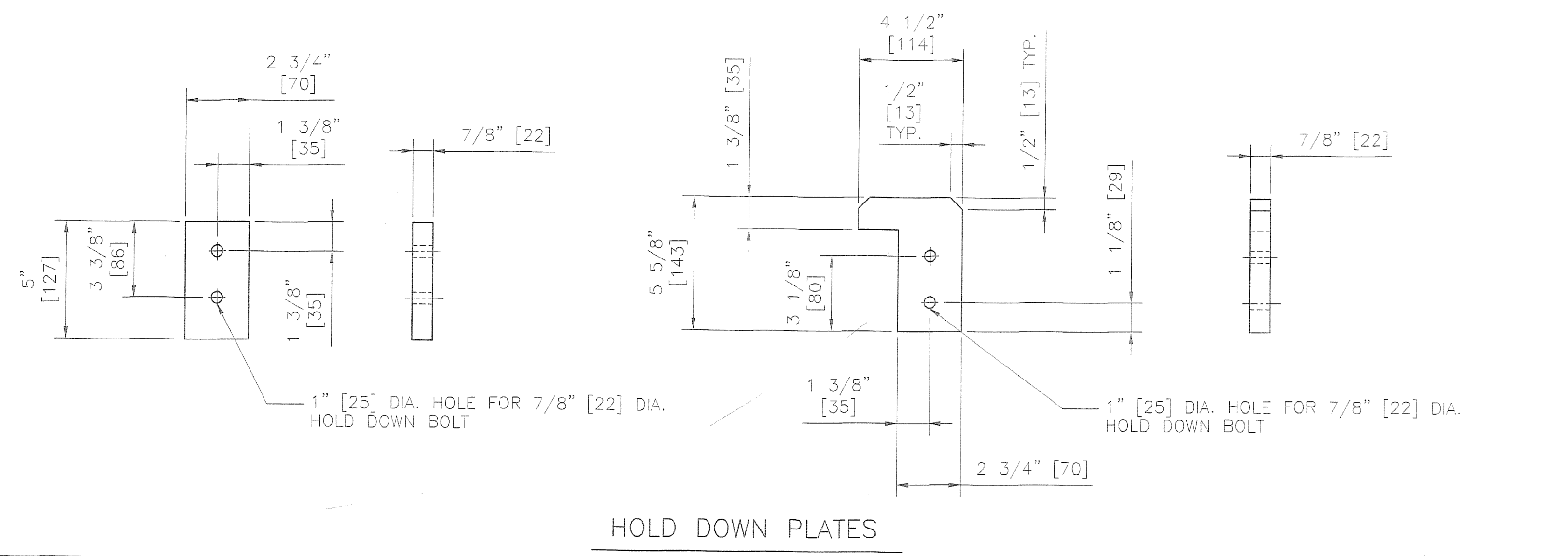
REVIEWED AS REQUIRED BY THE CONSTRUCTION CONTRACT DOCUMENTS AND APPROVED, BUT ONLY FOR CONFORMANCE TO THE DESIGN CONCEPT OF THE WORK, AND SUBJECT TO FURTHER LIMITATIONS AND REQUIREMENTS CONTAINED IN THE CONSTRUCTION CONTRACT DOCUMENTS.

REJECTED  REVISE AND RESUBMIT  FURNISH AS CORRECTED

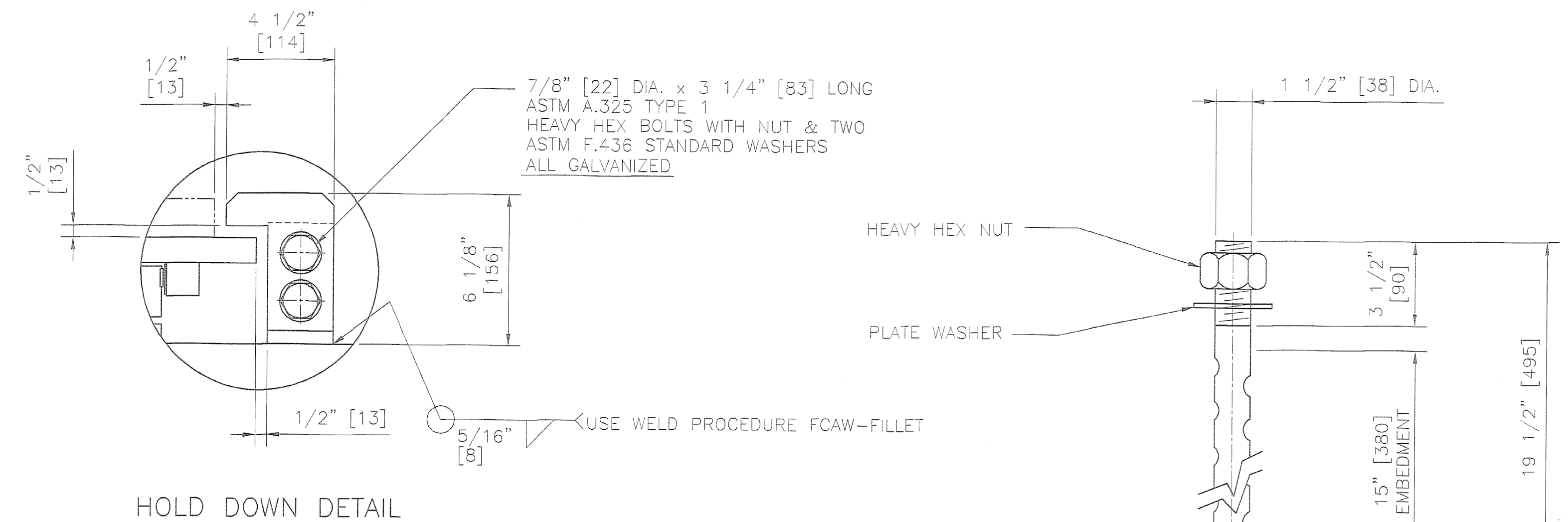
CORRECTIONS OR COMMENTS MADE ON THE SHOP DRAWINGS DURING THIS REVIEW DO NOT RELIEVE CONTRACTOR FROM COMPLIANCE WITH REQUIREMENTS OF THE DRAWINGS AND SPECIFICATIONS. THIS CHECK IS ONLY FOR REVIEW OF GENERAL CONFORMANCE WITH THE DESIGN CONCEPT OF THE PROJECT AND GENERAL COMPLIANCE WITH THE INFORMATION GIVEN IN THE CONTRACT DOCUMENTS. THE CONTRACTOR IS RESPONSIBLE FOR: CONFIRMING AND CORRELATING ALL QUANTITIES AND DIMENSIONS; SELECTING FABRICATION PROCESSES AND TECHNIQUES OF CONSTRUCTION; COORDINATING HIS WORK WITH THAT OF ALL OTHER TRADES; AND PERFORMING HIS WORK IN A SAFE AND SATISFACTORY MANNER.

Vinasse Hagen Brunett, Inc.  
Engineers, Planners and Scientists  
Six Bedford Farms, Kirtland Rd.  
Bedford, NH 03102, 603.644.0888

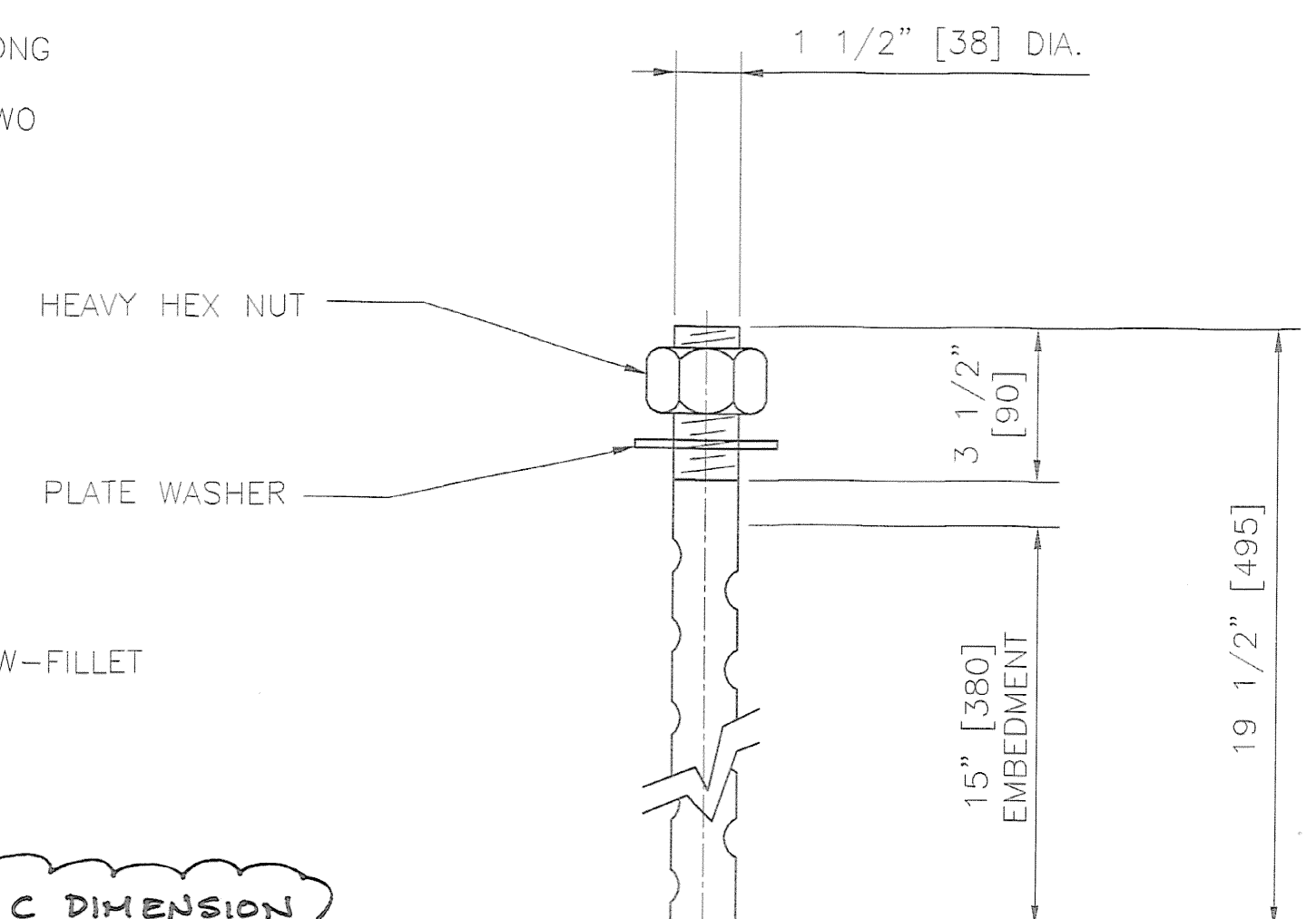
Job Number: 50911  
Reviewed By: [Signature]  
Date: 11-11-2004



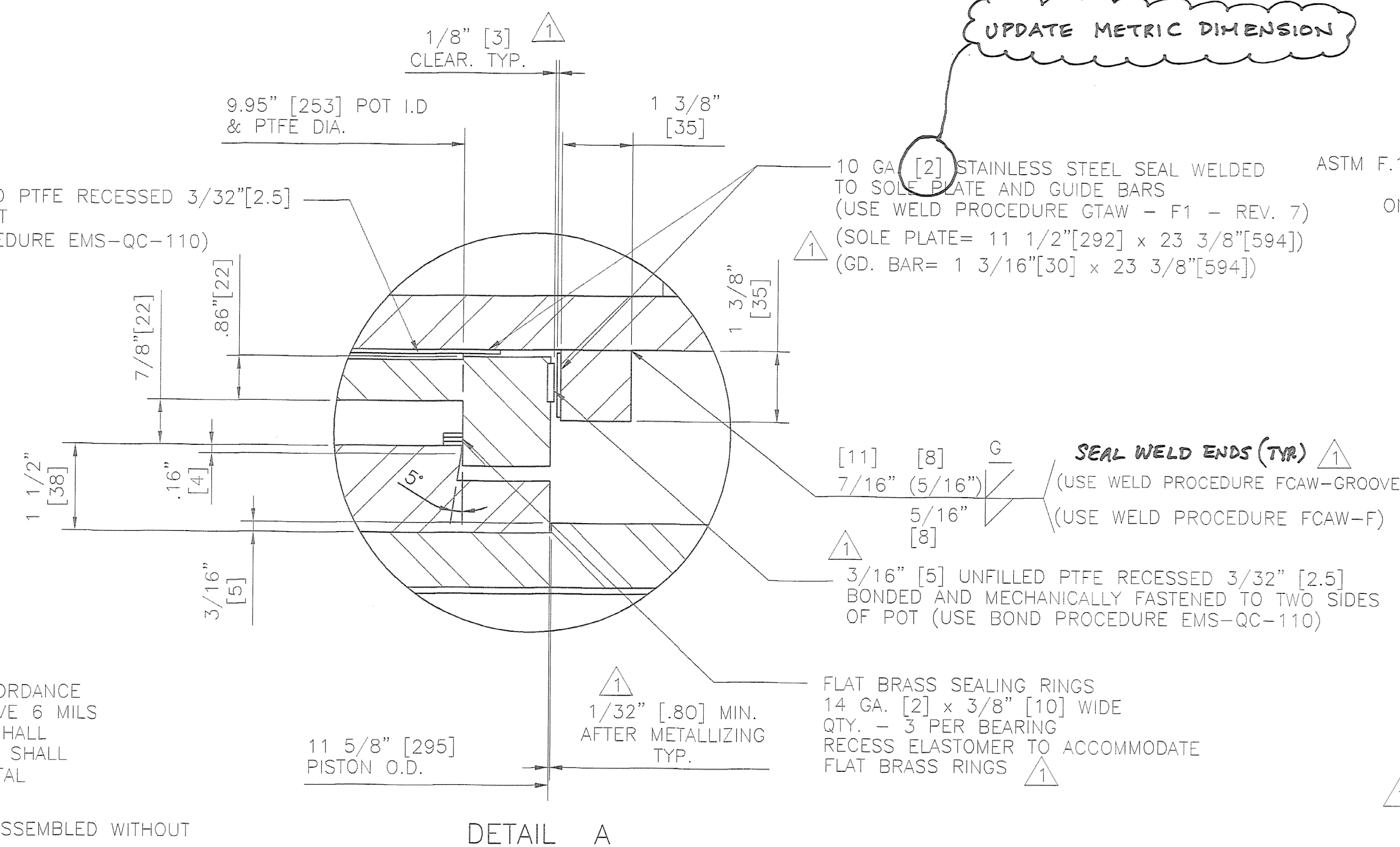
**HOLD DOWN PLATES**



**HOLD DOWN DETAIL**



**ANCHOR BOLT DETAIL**



**DETAIL A**

UPDATE METRIC DIMENSION

1 1/2" [38] DIA. x 19 1/2" [495] LONG ASTM F.1554 GR. 55 SWEDGED ANCHOR BOLT WITH 3 1/2" [90] THREAD ONE END, ONE HEAVY HEX NUT AND ONE 3/8" [10] x 3 1/4" [83] DIA. PLATE WASHER w/ 1 3/4" [45] DIA. HOLE ALL GALVANIZED

STATE OF VERMONT  
AGENCY OF TRANSPORTATION  
PROJECT NO. BRF 036-1(1)  
TOWN OF ALBURG-SWANTON  
VT 78 OVER MISSISQUOI BAY  
BRIDGE NO. 2  
PIER 7, SPAN 8 AND PIER 15, SPAN 15  
POT BEARING DETAILS

**COSMEC, INC.** 70 SOUTH STREET WALPOLE, MA. 02081

SCALE: N.T.S. DRAWN BY: MCM CHECKED BY: NH  
SHEET 2 OF 7 DATE: 7/27/04 DATE: 8/2/04

**COSMEC POT BEARINGS**

REV. 1 ADDED WELD, REV. NOTE 2, REV. ANCHOR BOLT, OVERALL HEIGHT & AS NOTED BY MK DATE 10/13/04 OK'D NH DATE 10/14/04 CUSTOMER CIANBRO CORP. S.D. NUMBER 60093 DRAWING NUMBER 4259 REV. 1