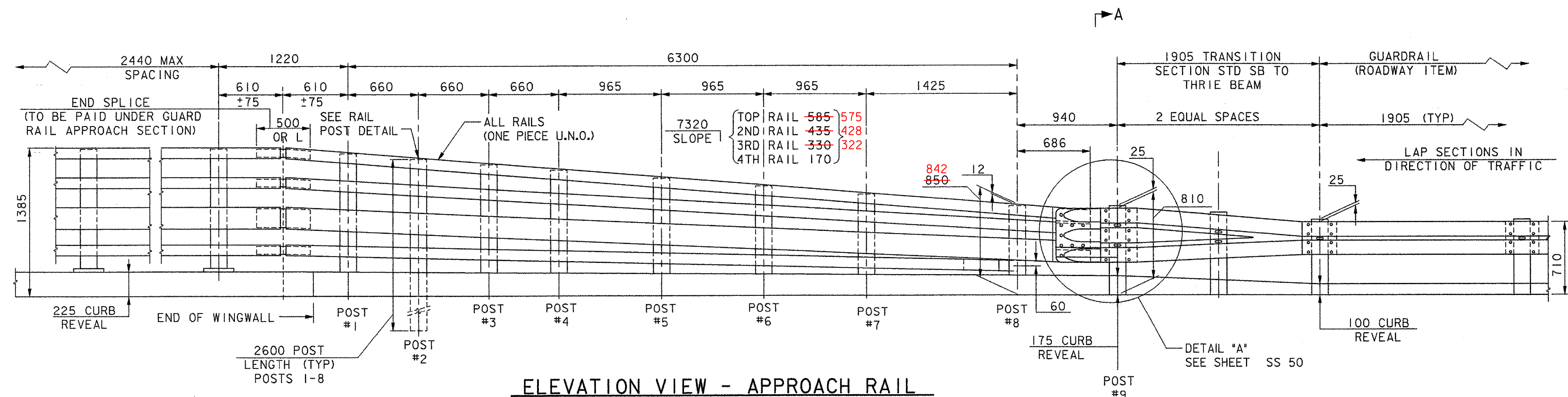


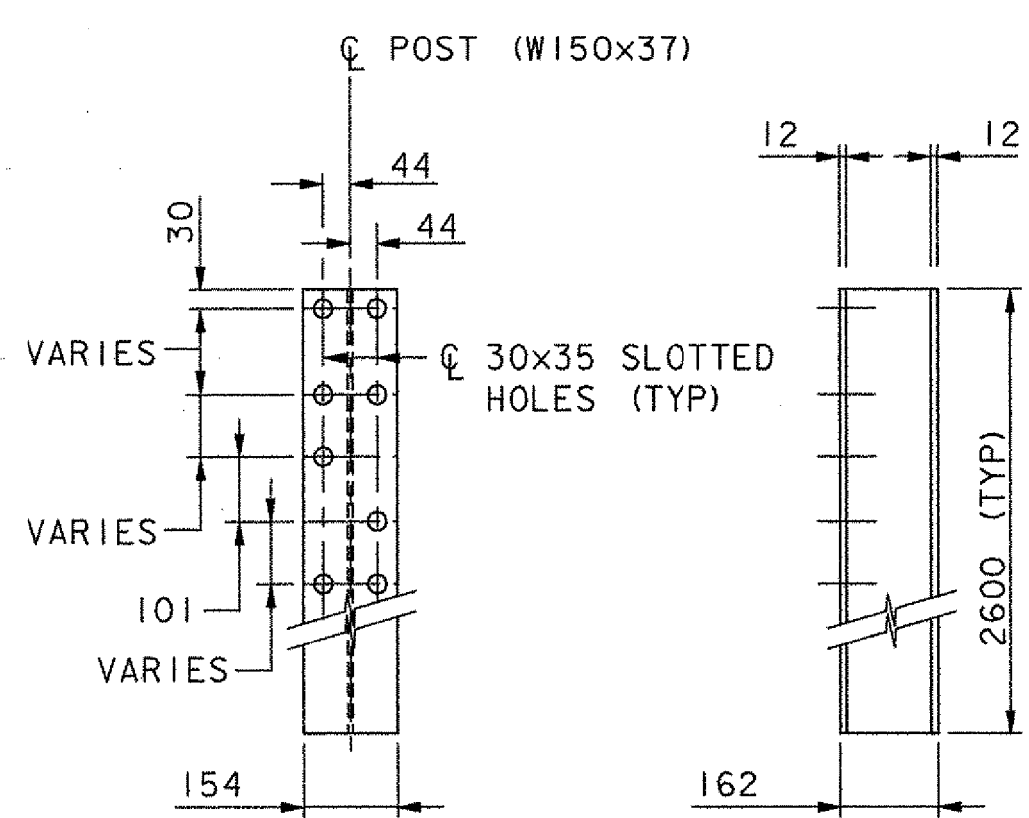
**PLAN VIEW - APPROACH RAIL**  
NOT TO SCALE



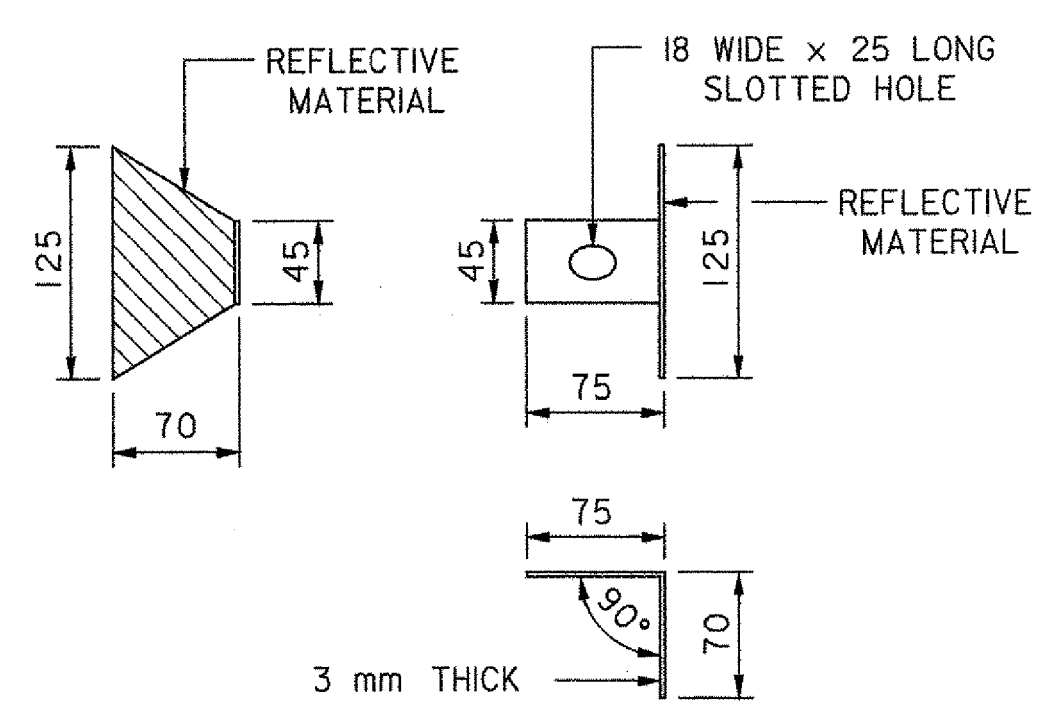
**ELEVATION VIEW - APPROACH RAIL**  
NOT TO SCALE

**NOTES:**

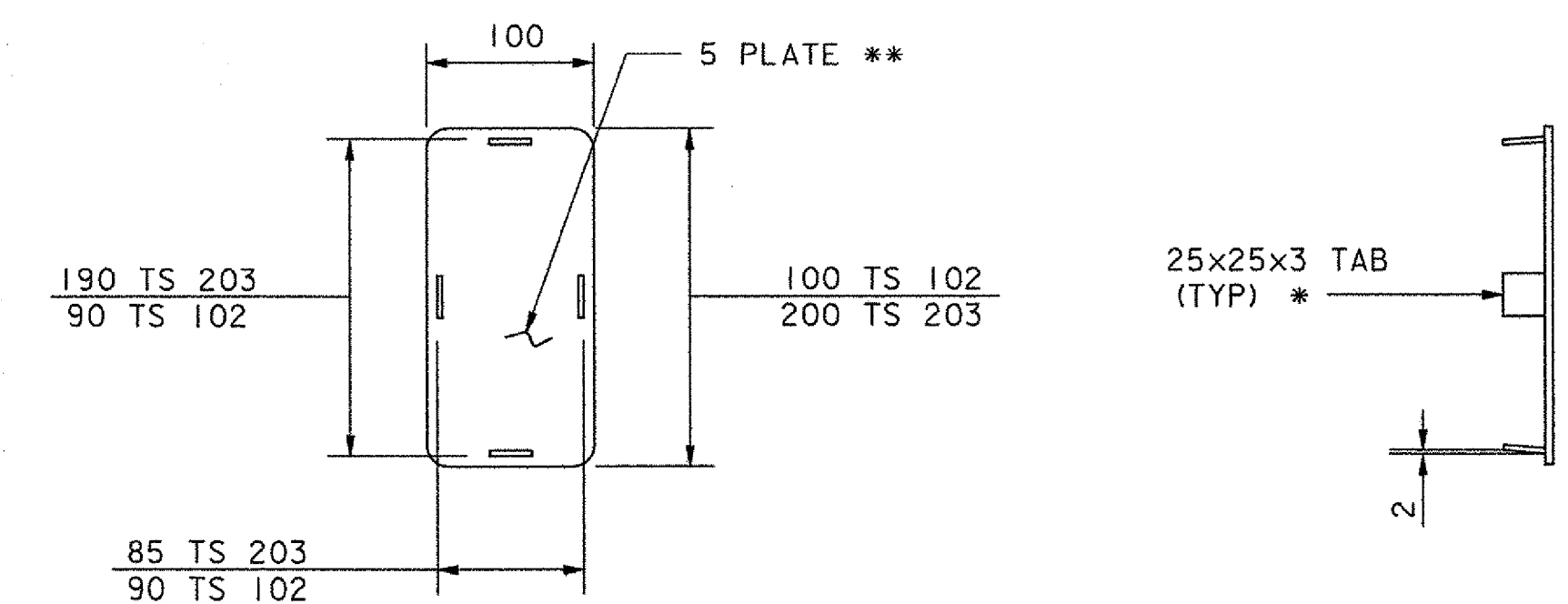
1. REFER TO SHEET SS 48 & SS 50 FOR ADDITIONAL DETAILS, NOTES AND MATERIAL SPECIFICATIONS.
2. PAYMENT FOR GUARD RAIL APPROACH SECTION, NETC 4 RAIL SHALL INCLUDE THE TERMINAL CONNECTOR, THE CONNECTION PLATE, RAIL, POSTS, BLOCKS AND ATTACHMENT HARDWARE.
3. THE REFLECTORIZED ALUMINUM DELINEATION IS TO BE ERECTED EVERY 9100 (OR CLOSEST POST) WITH A 16 mm DIAMETER BOLT. DELINEATORS SHALL MEET SPECIFICATION REQUIREMENTS FOR ASTM B209 ALLOY 5052-H32.
4. REFLECTIVE MATERIAL SHALL MEET REQUIREMENTS OF SUBSECTION 750.08 AND SHALL BE OF ENCAPSULATED LENS SILVER. SILVER IS TO BE INSTALLED ON THE DRIVER'S RIGHT.
5. ALL APPROACH RAIL SPLICES SHALL BE LAPPED IN THE DIRECTION OF TRAFFIC FLOW.
6. ALL BRIDGE APPROACH RAIL MATERIALS, DIMENSION SIZES AND NOTES SHALL BE THE SAME AS THOSE OF THE BRIDGE RAIL, UNLESS OTHERWISE NOTED.
7. CARRIAGE BOLTS SHALL BE AASHTO M 164M AND NUTS SHALL BE ASTM A563 GRADE A OR BETTER (GALVANIZED).
8. WELD SPLICE BARS TO FIT BEND. USE COMPLETE PENETRATION WELD (B-U2).
9. THE CONCRETE CURB ROADWAY ITEM WILL BE PAID FOR AS ITEM 616.28, "CAST IN-PLACE CONCRETE CURB, TYPE B."
10. SEE SHEET SS 50 FOR SECTION A-A.



**RAIL POST**  
NOT TO SCALE



**DELINEATION DEVICE DETAILS**  
NOT TO SCALE



**END CAP DETAIL**  
NOT TO SCALE

\* WELD TABS TO END CAP PLATE IN TAPERED POSITION SO CAP CAN BE JAMMED INTO END OF RAIL TUBE.  
\*\* ROUND CORNERS 12 mm RADIUS (TYP)

| STATE OF VERMONT<br>AGENCY OF TRANSPORTATION |                   |                              |
|--|-------------------|------------------------------|
| Town Of                                      | ALBURG-SWANTON    | Bridge No. 2                 |
| Highway No.                                  | VT 78             | Log Sta.                     |
|  |                   | Surv. Sta.                   |
| VT 78 OVER MISSISQUOI BAY                    |                   |                              |
| NETC 4 RAIL - APPROACH RAILING               |                   |                              |
| Designed By                                  | J. T. KLEIN       | Drawn By W. B. LAVERGNE (TS) |
| Checked By                                   | S. M. HODGDON     | Bridge Design Supervisor     |
|  | Date 10/03        | S. W. JOHNSON Date 10/03     |
| PROJECT                                      | ALBURG-SWANTON    | PROJECT NO.<br>BRF 036-1 (1) |
| I.G.C. Info.                                 | File No. ZE072br3 | Sheet SS 49 of SS 57         |