

**CONSTRUCTION NOTES**

**DURABLE LETTER OR SYMBOL**

12+244 RT "STOP"  
 11+990 - 12+270 LT  
 11+990 RT - 12+239 RT 24.0 m  
 12+245 RT 24.0 m - 12+270 RT

**DURABLE 100 mm WHITE LINE**

11+990 - 12+237  
 12+243 RT 12.0 m - 12+244 RT 24.0 m  
 12+249 - 12+270

**DURABLE 100 mm YELLOW LINE (DOUBLE CENTER LINE)**

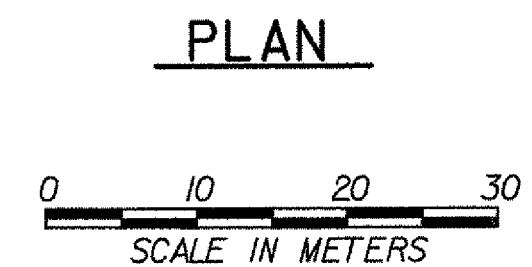
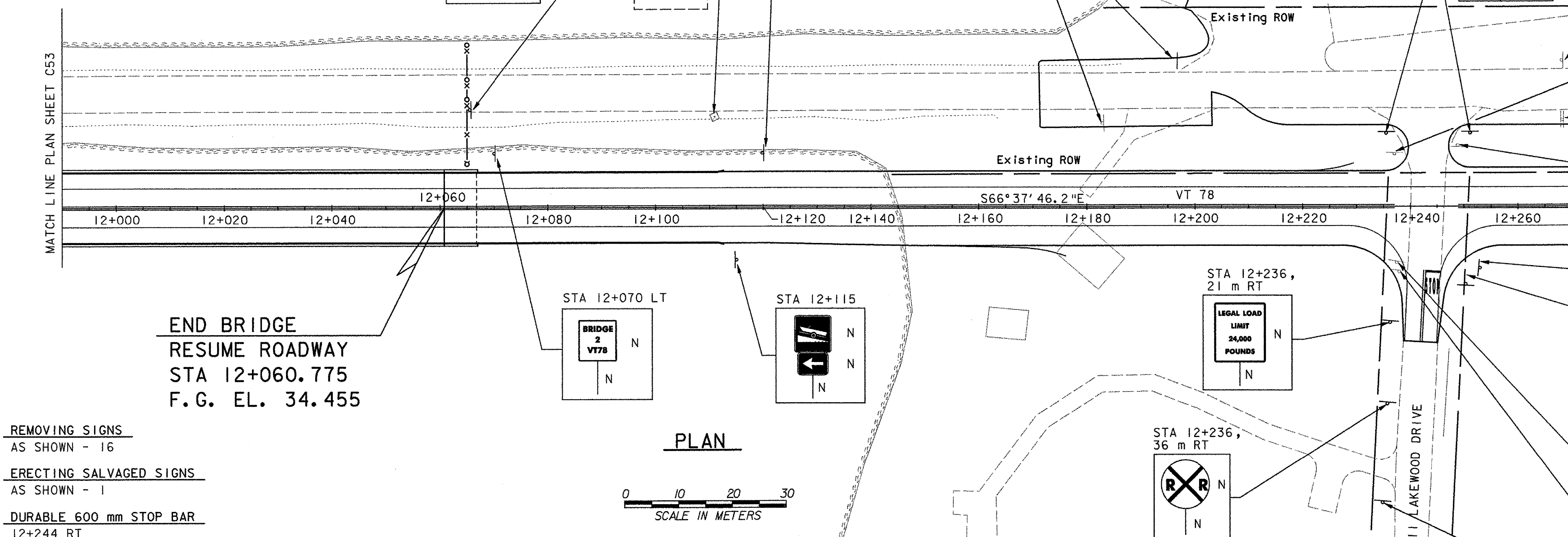
**DELINEATOR - TYPE I**

12+070 LT (GREEN)  
 12+070 RT (BLUE)  
 12+170 RT (GREEN)  
 12+225 LT (BLUE)

**DELINEATOR - TYPE II - SILVER**

12+100 LT & RT  
 12+180 LT & RT  
 12+260 LT & RT

FOR BOAT RAMP AREA  
 SIGNING AND MARKING  
 PLAN, SEE SHEET C61



**REMOVING SIGNS**  
 AS SHOWN - 16

**ERECTING SALVAGED SIGNS**  
 AS SHOWN - 1

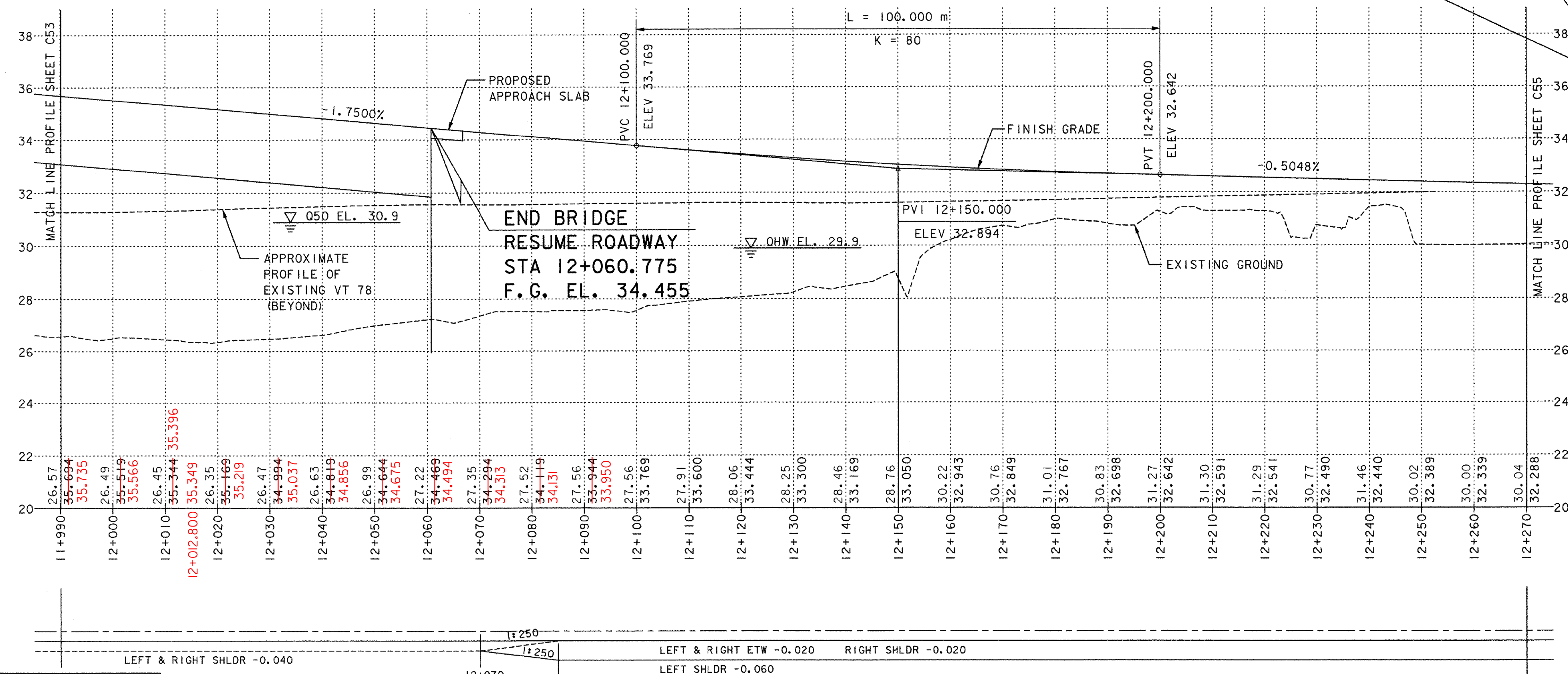
**DURABLE 600 mm STOP BAR**  
 12+244 RT

**END BRIDGE  
 RESUME ROADWAY  
 STA 12+060.775  
 F.G. EL. 34.455**

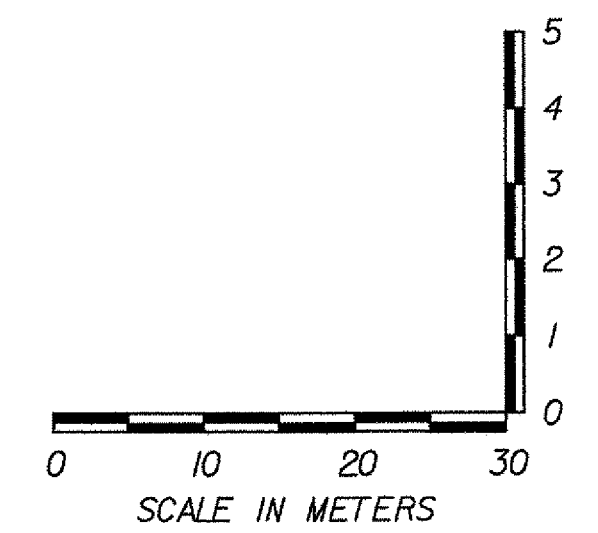
**SIGN LEGEND**

N = NEW  
 R = REMOVE  
 R&S = REMOVE & SALVAGE  
 S = SALVAGED SIGN  
 RET = RETAIN  
 B-B = BACK TO BACK

ALL SIGNS SHALL BE RETAINED  
 AND DISTRIBUTED AS DIRECTED  
 BY THE RESIDENT ENGINEER.



STA 12+238 RT R  
 STA 12+235, 54 m RT N  
**SPEED LIMIT 30** R,N



HORIZONTAL SCALE = 1 : 500  
 VERTICAL SCALE = 1 : 100

- NOTES:**
- SEE LAYOUT SHEETS FOR MEDIAN TAPERS.
  - PROPERLY REMOVE FLASHING YELLOW LIGHTS FROM POLE AND DISCONNECT ELECTRICAL CIRCUIT BACK TO EXISTING UTILITY POLE. COST SHALL BE INCLUDED IN ITEM 675.50, REMOVING SIGNS.

**STATE OF VERMONT  
 AGENCY OF TRANSPORTATION**

Town Of	ALBURG-SWANTON	Bridge No.	2
Highway No.	VT 78	Log Sta.	
		Surv. Sta.	
VT 78 OVER MISSISQUOI BAY			
<b>VT 78 PROFILE &amp; SIGNING &amp; MARKING PLAN (8 OF 10)</b>			
Designed By	N. M. CHOUINARD	Drawn By	M. M. LANDREY/CLC
Checked By	Date	Bridge Design Supervisor	
G. L. BAKOS	10/03	C. D. BAKER	Date 10/03
PROJECT	ALBURG-SWANTON	PROJECT NO.	BRF 036-1 (1)

DATUM  
 VERTICAL NAVD 88  
 HORIZONTAL NAD 83 (92)

**PROFILE AND BANKING DIAGRAM**

**VANASSE HANGEN BRUSTLIN, INC.**