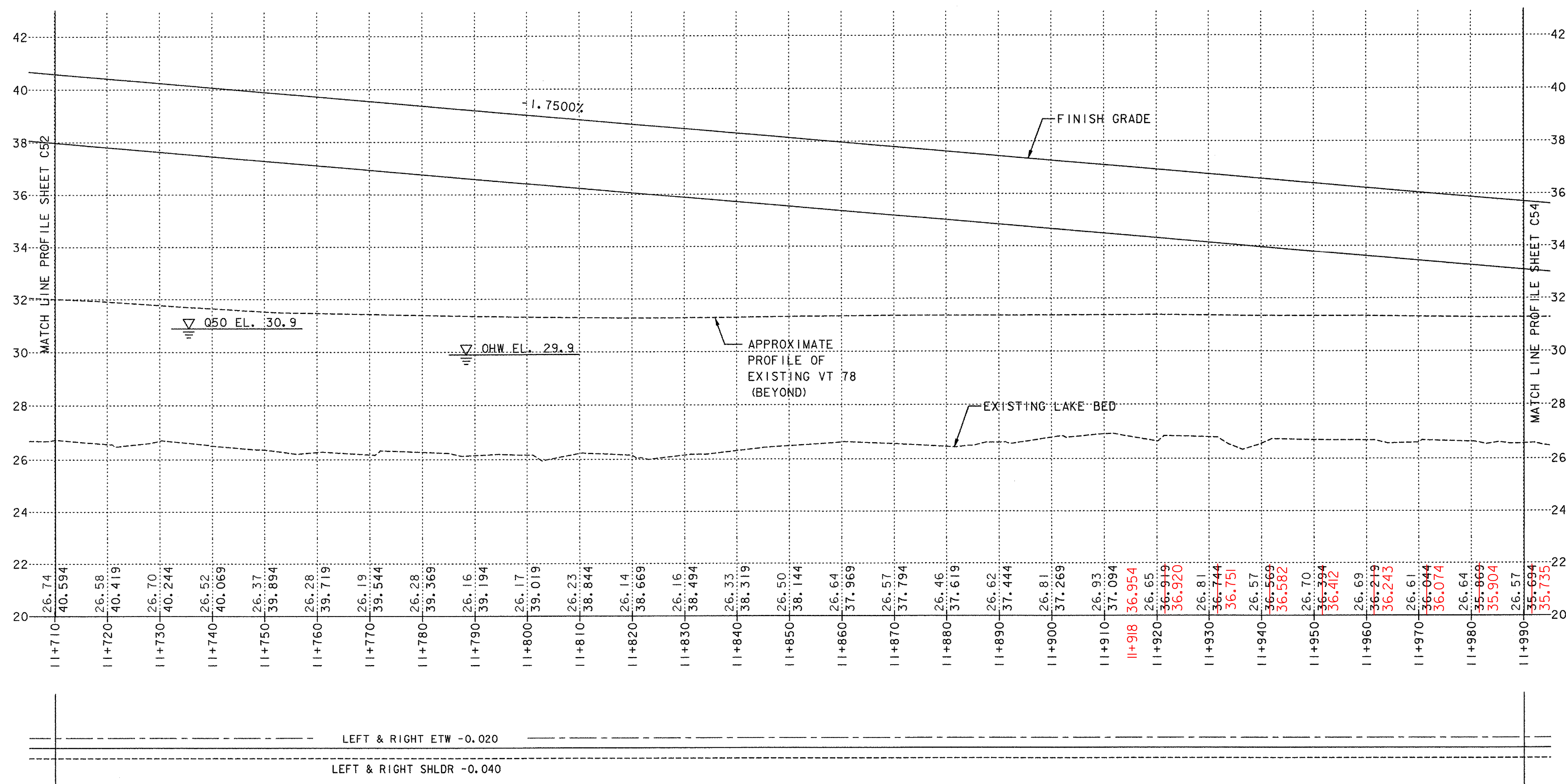


**PLAN**



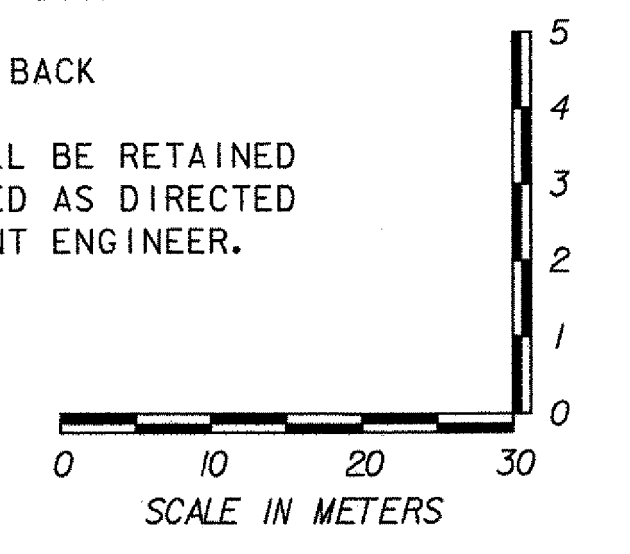
**CONSTRUCTION NOTES**

- DURABLE 100 mm WHITE LINE**  
11+710 - 11+990 LT & RT
- DURABLE 100 mm YELLOW LINE (DOUBLE CENTER LINE)**  
11+710 - 11+990
- REMOVING SIGNS**  
AS SHOWN - 7



**SIGN LEGEND**

- N = NEW
  - R = REMOVE
  - R&S = REMOVE & SALVAGE
  - S = SALVAGED SIGN
  - RET = RETAIN
  - B-B = BACK TO BACK
- ALL SIGNS SHALL BE RETAINED AND DISTRIBUTED AS DIRECTED BY THE RESIDENT ENGINEER.



**NOTE:**  
SEE LAYOUT SHEETS FOR MEDIAN TAPERS

<b>STATE OF VERMONT AGENCY OF TRANSPORTATION</b>		
Town Of	ALBURG-SWANTON	Bridge No. 2
Highway No.	VT 78	Log Sta.
		Surv. Sta.
VT 78 OVER MISSISQUOI BAY		
<b>VT 78 PROFILE &amp; SIGNING &amp; MARKING PLAN (7 OF 10)</b>		
Designed By	N. M. CHOUINARD	Drawn By M. M. LANDREY/CLC
Checked By	Date	Bridge Design Supervisor
G. L. BAKOS	10/03	C. D. BAKER Date 10/03
PROJECT	ALBURG-SWANTON	PROJECT NO. BRF 036-1 (1)
I.G.C. Info.	File No. ZE072ST7	Sheet C53 of C194

DATUM  
VERTICAL NAVD 88  
HORIZONTAL NAD 83 (92)

**PROFILE AND BANKING DIAGRAM**

**VANASSE HANGEN BRUSTLIN, INC.**