

CONSTRUCTION NOTES

- DURABLE 100 mm WHITE LINE
10+870 - 11+150 LT & RT
- DURABLE 100 mm YELLOW LINE (DOUBLE CENTER LINE)
10+870 - 11+150
- REMOVING SIGNS
AS SHOWN - 6
- DELINEATOR - TYPE I
10+960 RT (GREEN)
10+960 LT (BLUE)
- DELINEATOR - TYPE II - SILVER
~~10+940 LT & RT~~ ELIMINATED

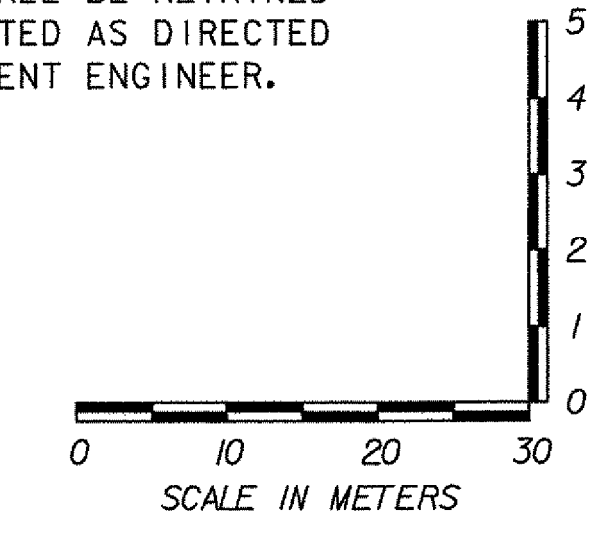
**STOP ROADWAY
BEGIN BRIDGE
STA 10+969.425
F.G. EL. 36.384**



SIGN LEGEND

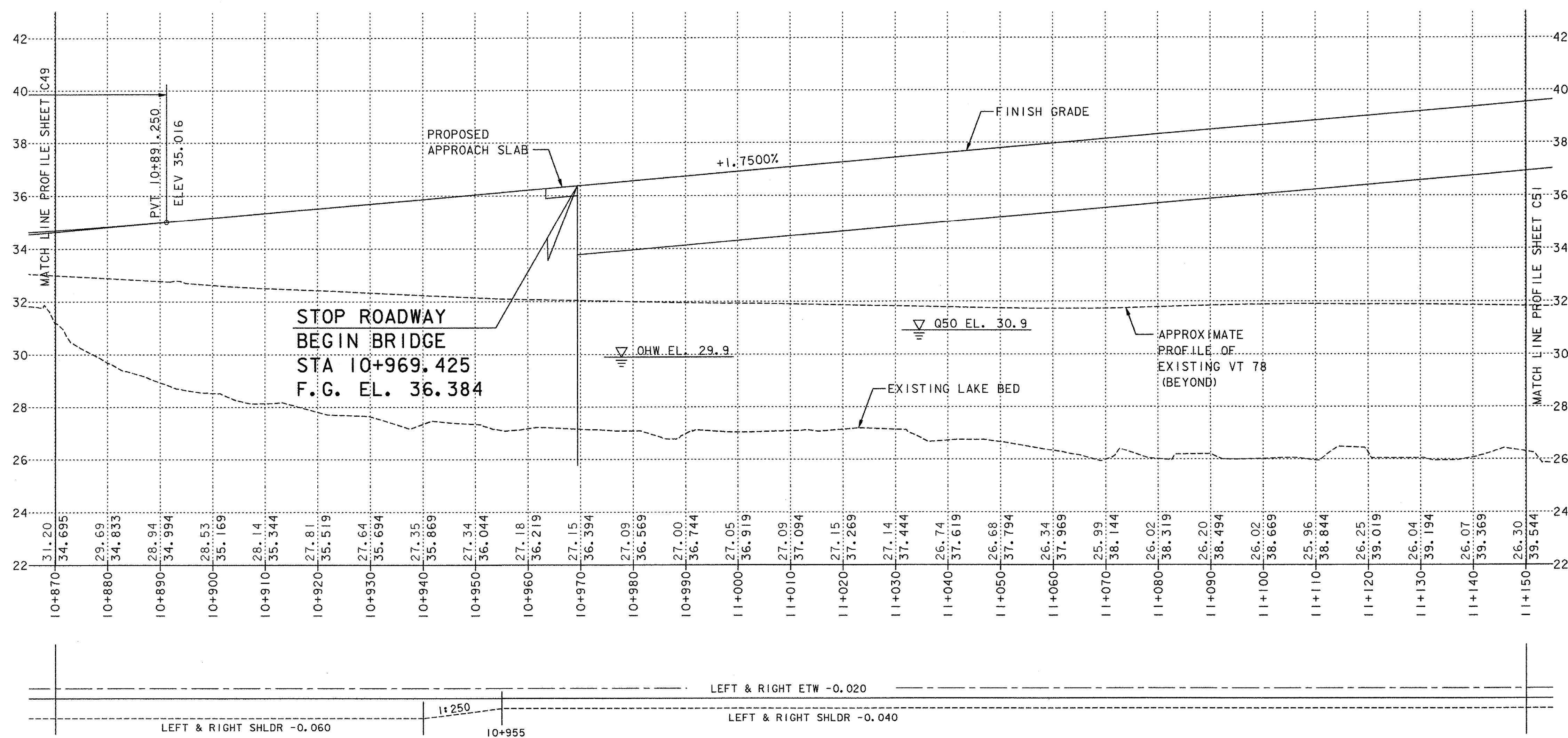
- N = NEW
- R = REMOVE
- R&S = REMOVE & SALVAGE
- S = SALVAGED SIGN
- RET = RETAIN
- B-B = BACK TO BACK

ALL SIGNS SHALL BE RETAINED AND DISTRIBUTED AS DIRECTED BY THE RESIDENT ENGINEER.



NOTES:

1. SEE LAYOUT SHEETS FOR MEDIAN TAPERS.
2. PROPERLY REMOVE FLASHING YELLOW LIGHTS FROM POLE AND DISCONNECT ELECTRICAL CIRCUIT BACK TO EXISTING UTILITY POLE. COST SHALL BE INCLUDED IN ITEM 675.50, REMOVING SIGNS.



PROFILE AND BANKING DIAGRAM

DATUM
VERTICAL NAVD 88
HORIZONTAL NAD 83 (92)

VANASSE HANGEN BRUSTLIN, INC.

**STATE OF VERMONT
AGENCY OF TRANSPORTATION**

Town Of	ALBURG-SWANTON	Bridge No.	2
Highway No.	VT 78	Log Sta.	
		Surv. Sta.	
VT 78 OVER MISSISQUOI BAY			
VT 78 PROFILE & SIGNING & MARKING PLAN (4 OF 10)			
Designed By	N. M. CHOUINARD	Drawn By	M. M. LANDREY/CLC
Checked By	Date	Bridge Design Supervisor	
G. L. BAKOS	10/03	C. D. BAKER	Date 10/03
PROJECT	ALBURG-SWANTON	PROJECT NO.	BRF 036-1 (1)
I.G.C. Info.	File No. ZE072ST4	Sheet	C50 of C194