

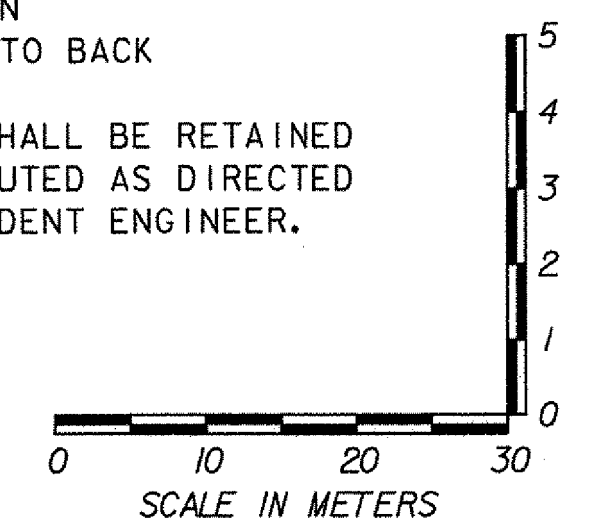
**CONSTRUCTION NOTES**

- DURABLE 100 mm WHITE LINE**  
~~10+175 +0+085 - 10+310 LT~~  
~~10+148 +0+085 - 10+150 RT 10+160~~  
~~10+175 +0+172 - 10+310 RT~~
- DURABLE 100 mm YELLOW LINE (DOUBLE CENTER LINE)**  
~~10+085 - 10+159~~  
~~10+175 +0+171 - 10+200~~  
 10+200 - 10+310 LT & RT  
 10+165 RT 6.3 m - 10+171 RT 26.8 m
- DURABLE 200 mm YELLOW LINE (DIAGONAL)**  
 10+200 - 10+310 RT
- DURABLE 600 mm STOP BAR**  
 10+169 RT
- REMOVING SIGNS**  
 AS SHOWN - 4
- DELINEATOR, TYPE II - SILVER**  
 10+150 LT & RT  
 10+226 RT  
~~10+240 +0+230 LT~~  
 10+300 LT & RT
- DURABLE LETTER OR SYMBOL**  
 10+167 RT "STOP"

**SIGN LEGEND**

- N = NEW
- R = REMOVE
- R&S = REMOVE & SALVAGE
- S = SALVAGED SIGN
- RET = RETAIN
- B-B = BACK TO BACK

ALL SIGNS SHALL BE RETAINED AND DISTRIBUTED AS DIRECTED BY THE RESIDENT ENGINEER.

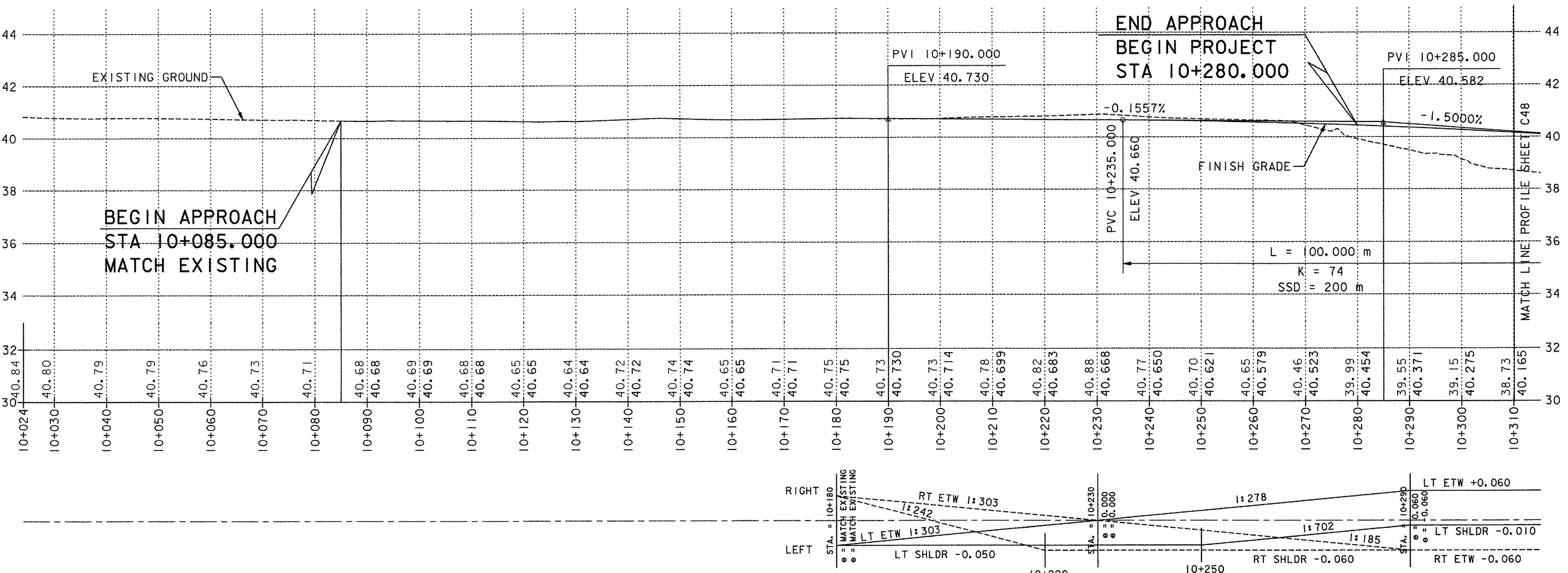
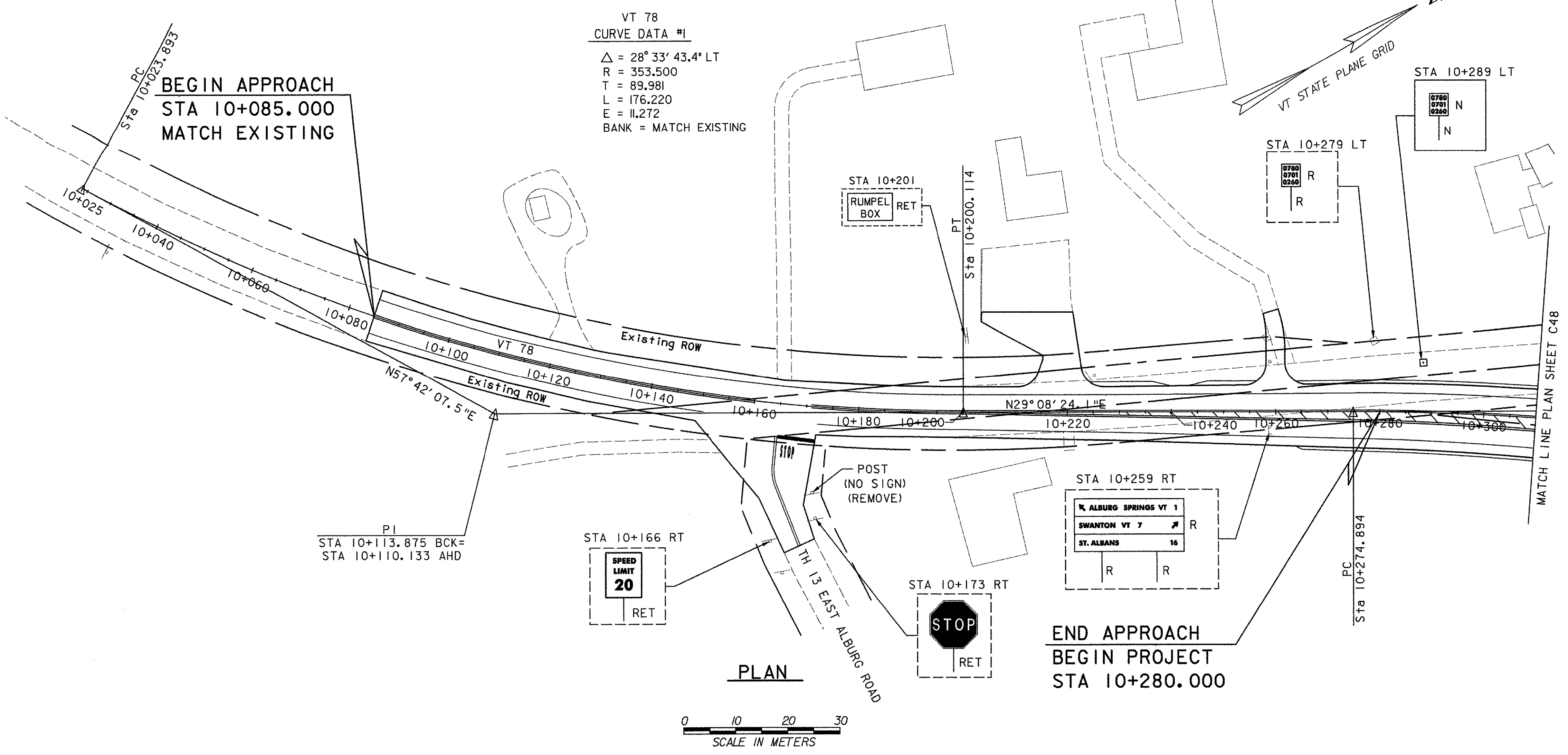


**NOTE:**

SEE LAYOUT SHEETS FOR MEDIAN TAPERS

**STATE OF VERMONT AGENCY OF TRANSPORTATION**

Town Of	ALBURG-SWANTON	Bridge No.	2
Highway No.	VT 78	Log Sta.	
		Surv. Sta.	
VT 78 OVER MISSISQUOI BAY			
<b>VT 78 PROFILE &amp; SIGNING &amp; MARKING PLAN (1 OF 10)</b>			
Designed By	N.M. CHOUINARD	Drawn By	M.M. LANDREY/CLC
Checked By	Date	Bridge Design Supervisor	
G.L. BAKOS	10/03	C.D. BAKER	Date 10/03
PROJECT	ALBURG-SWANTON	PROJECT NO.	BRF 036-1 (1)



DATUM  
 VERTICAL NAVD 88  
 HORIZONTAL NAD 83 (92)

VANASSE HANGEN BRUSTLIN, INC.