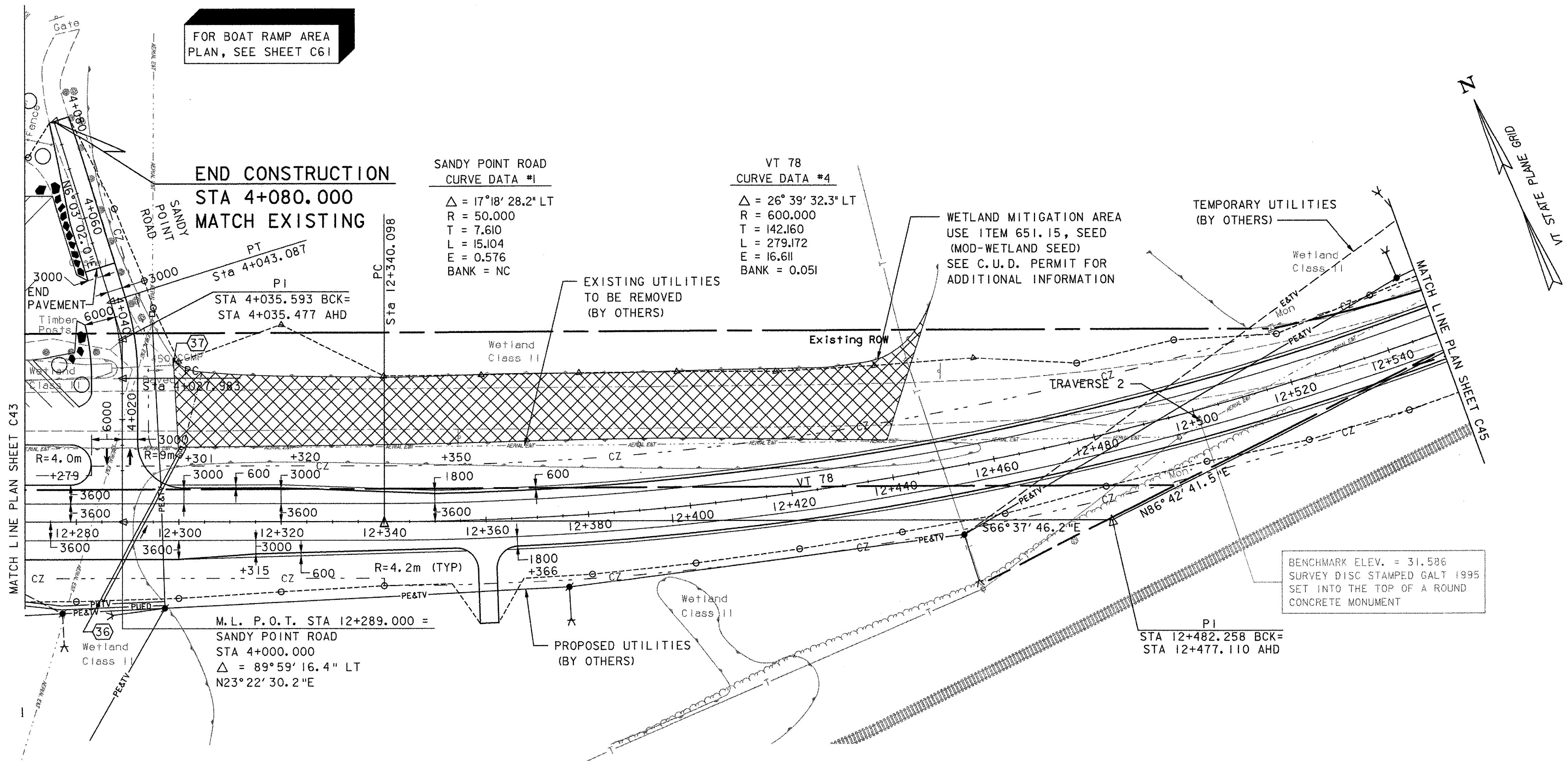


FOR BOAT RAMP AREA
PLAN, SEE SHEET C61



PLAN



- LEGEND**
- ♣ PROPOSED MAILBOX
 - ⊗ PROPOSED LANDSCAPING
 - x-x- PROPOSED CHAIN-LINK FENCE
 - PB PROPOSED PULL BOX
 - * PROPOSED OVERHEAD LIGHT
 - PROPOSED UTILITY VAULT
 - PUED- PROPOSED UNDERGROUND ELECTRICAL DUCT
 - PUTV- PROPOSED UNDERGROUND CABLE TV DUCT
 - PNL- PROPOSED UNDERGROUND WIRED CONDUIT FOR NAVIGATIONAL LIGHTING
 - PE&TV- PROPOSED AERIAL ELECTRIC, CABLE TV AND TELEPHONE
 - PT- PROPOSED AERIAL TELEPHONE
 - E&TV- TEMPORARY AERIAL ELECTRIC, CABLE TV AND TELEPHONE

TRAVEL LANE TAPERS

STA 4+040, LT (6000 mm) TO
STA 4+045, LT (3000 mm)

STA 4+060, LT (3000 mm) TO
STA 4+080, LT (1000 mm)

PAVED SHOULDER TAPERS

STA 12+320, LT (3000 mm) TO
STA 12+350, LT (1800 mm)

STA 12+300, RT (3600 mm) TO
STA 12+315, RT (3000 mm)

STA 12+315, RT (3000 mm) TO
STA 12+366, RT (1800 mm)

CONSTRUCT DRIVE

STA 12+360, RT
50 BCP TYPE III, 3.6 m WIDE

BEGIN AGGREGATE SHOULDER

STA 12+298, LT
STA 12+300, RT

DUCTS - CONCRETE ENCASED

9 DUCTS (ELECTRICAL DUCTS):
STA 12+270, RT 16.2 m - STA 12+277, RT 17.0 m

3 DUCTS (ELECTRICAL DUCTS):
STA 12+277, RT 17.0 m - STA 12+297, RT 16.9 m

DUCTS - DIRECT BURIAL (CABLE TV DUCT)

STA 12+270, RT 15.7 m - STA 12+277, RT 16.5 m
STA 12+277, RT 16.5 m - STA 12+297, RT 16.4 m

REMOVAL & DISPOSAL OF GUIDE POSTS

STA 12+274, LT
STA 12+279, LT
STA 12+284, LT
STA 4+042, RT
STA 4+048, RT
STA 4+054, RT
STA 4+061, RT
STA 4+067, RT
STA 4+074, RT
STA 4+080, RT
STA 4+085, RT

DRAINAGE NOTES

- (36) STA 12+285, RT 15.0 m - STA 12+300, LT 13.0 m
NEW 600x32 m PCCSP OR CAAP OR RCP OR CPEP
INV IN = 30.100
INV OUT = 29.780
OUTLET WITH STONE FILL PAD, TYPE I
1200x2.1 mx300 DEEP
- (37) STA 12+287, LT 30.0 m - STA 12+301, LT 30.6 m
REMOVE EXISTING 450x14 m CGMP

DATUM
VERTICAL NAVD 88
HORIZONTAL NAD 83 (92)

VANASSE HANGEN BRUSTLIN, INC.

STATE OF VERMONT AGENCY OF TRANSPORTATION		
Town Of	ALBURG-SWANTON	Bridge No. 2
Highway No.	VT 78	Log Sta. Surv. Sta.
VT 78 OVER MISSISQUOI BAY		
VT 78 ROADWAY PLAN (9 OF 10)		
Designed By	S.W. BEKIER	Drawn By C.L. CILLEY
Checked By	J.A. MERCER	Date 10/03 Bridge Design Supervisor C.D. BAKER Date 10/03
PROJECT	ALBURG-SWANTON	PROJECT NO. BRF 036-1 (1)
I.G.C. Info.		
File No.	ZE072PN9	Sheet C44 of C194