

RELOCATE SINGLE MAILBOX SUPPORT

STA 2+030, LT
STA 2+064, RT

MULTIPLE MAILBOX SUPPORT

STA 10+775, LT

END AGGREGATE SHOULDER

STA 10+755, LT
STA 10+825, RT

EROSION MATTING

STA 10+590, LT - STA 10+620, LT
STA 10+720, LT - STA 10+753, LT
STA 10+774, LT - STA 10+800, LT

REMOVAL OF EXISTING FENCE

STA 10+815, RT -
STA 10+845, RT

GEOTEXTILE FOR ROADBED SUBGRADE SEPARATOR

STA 10+850, RT - STA 10+870, RT

ANCHOR FOR STEEL BEAM GUARDRAIL

STA 2+028, LT
STA 2+034, LT
STA 2+057, LT

BRICK PAVING

DRIVE OFF TH 13
STA 3+025, LT
1000 WIDE AT EL. 33.175

STAIRS WITH HAND RAILING

STA 2+031, LT, 900 WIDE

(27) STA 10+865, LT 6.3 m - LT 16.3 m
D1 WITH GRATE, TYPE D
RIM EL. = 34.305
INV. IN (S) = 32.250
INV. OUT (N) = 32.150
NEW 450x10 m PCCSP
INV. OUT = 31.870
OUTLET WITH STONE FILL PAD, TYPE I
900x3.9 m x 300 DEEP

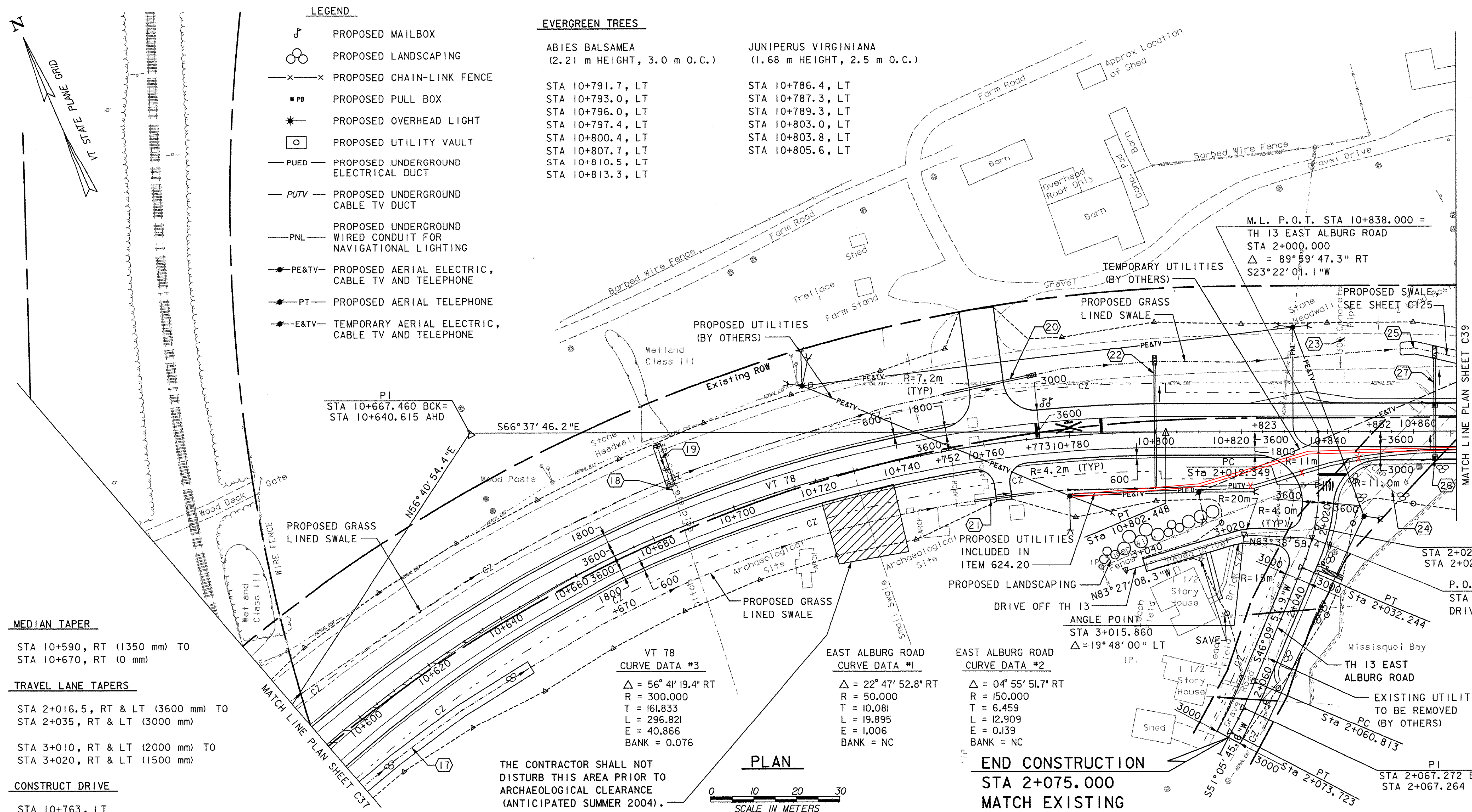
**STATE OF VERMONT
AGENCY OF TRANSPORTATION**

Town Of	ALBURG-SWANTON	Bridge No.	2
Highway No.	VT 78	Log Sta.	
		Surv. Sta.	
VT 78 OVER MISSISQUOI BAY			
VT 78 ROADWAY PLAN (3 OF 10)			
Designed By	S.W. BEKIER	Drawn By	C.L. CILLEY
Checked By	Date	Bridge Design Supervisor	
J.A. MERCER	11/03	C.D. BAKER	Date 11/03
PROJECT	ALBURG-SWANTON	PROJECT NO.	BRF 036-1 (1)
I.G.C. Info.			
File No.	ZE072PN3	Sheet	C38 of C194

VANASSE HANGEN BRUSTLIN, INC.

- LEGEND**
- ♫ PROPOSED MAILBOX
 - ⊗ PROPOSED LANDSCAPING
 - x—x— PROPOSED CHAIN-LINK FENCE
 - PB PROPOSED PULL BOX
 - ⋆ PROPOSED OVERHEAD LIGHT
 - ⊙ PROPOSED UTILITY VAULT
 - PUED— PROPOSED UNDERGROUND ELECTRICAL DUCT
 - PUTV— PROPOSED UNDERGROUND CABLE TV DUCT
 - PNL— PROPOSED UNDERGROUND WIRED CONDUIT FOR NAVIGATIONAL LIGHTING
 - PE&TV— PROPOSED AERIAL ELECTRIC, CABLE TV AND TELEPHONE
 - PT— PROPOSED AERIAL TELEPHONE
 - E&TV— TEMPORARY AERIAL ELECTRIC, CABLE TV AND TELEPHONE

- EVERGREEN TREES**
- | | |
|---|---|
| ABIES BALSAMEA
(2.21 m HEIGHT, 3.0 m O.C.) | JUNIPERUS VIRGINIANA
(1.68 m HEIGHT, 2.5 m O.C.) |
| STA 10+791.7, LT | STA 10+786.4, LT |
| STA 10+793.0, LT | STA 10+787.3, LT |
| STA 10+796.0, LT | STA 10+789.3, LT |
| STA 10+797.4, LT | STA 10+803.0, LT |
| STA 10+800.4, LT | STA 10+803.8, LT |
| STA 10+807.7, LT | STA 10+805.6, LT |
| STA 10+810.5, LT | |
| STA 10+813.3, LT | |



- MEDIAN TAPER**
STA 10+590, RT (1350 mm) TO
STA 10+670, RT (0 mm)
- TRAVEL LANE TAPERS**
STA 2+016.5, RT & LT (3600 mm) TO
STA 2+035, RT & LT (3000 mm)
- STA 3+010, RT & LT (2000 mm) TO
STA 3+020, RT & LT (1500 mm)

- CONSTRUCT DRIVE**
- STA 10+763, LT
50 BCP TYPE III, 8.1 m WIDE
- STA 10+763, RT
50 BCP TYPE III, 3.6 m WIDE
- STA 2+025, RT
50 BCP TYPE III, 3.0 m WIDE

- STEEL BEAM GUARDRAIL**
- STA 10+847.0, LT - STA 10+870.0, LT
STA 2+030.2, LT - STA 10+870.0, RT
STA 2+031.8, LT - STA 2+059.0, LT

- BITUMINOUS CONCRETE CURB**
- STA 10+862, LT - 10+870, LT
STA 10+862, RT - 10+870, RT

- MANUFACTURED TERMINAL SECTION - FLARED**
- STA 10+835.6, LT - STA 10+847.0, LT

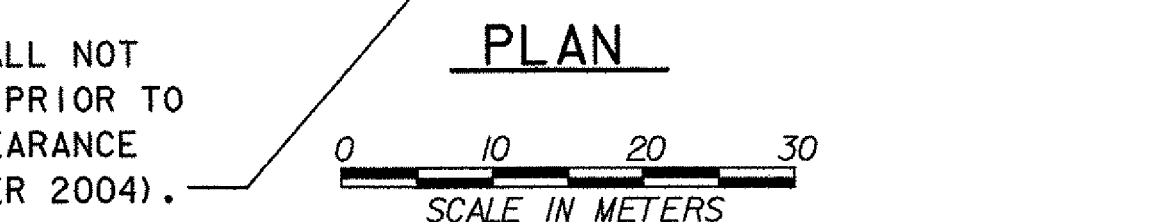
- STONE FILL, TYPE IV**
- STA 2+055, LT - STA 10+870, RT

- WIRED CONDUIT (NAVIGATIONAL LIGHTING)**
- STA 10+832, LT 24.1 m - STA 10+832, RT 4.1 m
STA 10+832, RT 4.1 m - STA 10+870, RT 4.1 m
- DUCTS - CONCRETE ENCASED**
- 3 DUCTS (ELECTRICAL DUCTS):
STA 10+780, RT 13.5 m - STA 10+810, RT 12.8 m
STA 10+810, RT 12.8 m - STA 10+823, RT 9.5 m
STA 10+823, RT 9.5 m - STA 10+863, RT 5.0 m
STA 10+863, RT 5.0 m - STA 10+870, RT 5.0 m
- 9 DUCTS (ELECTRICAL DUCTS):
STA 10+810, RT 13.5 m - STA 10+823, RT 9.5 m
STA 10+823, RT 9.5 m - STA 10+863, RT 5.0 m
STA 10+863, RT 5.0 m - STA 10+870, RT 5.0 m
- SLEEVES FOR UTILITIES (MOD-SPLIT SLEEVE) (EXISTING WATER LINE)**
- STA 2+040, LT 6.5 m - STA 2+046, RT 6.5 m
STA 2+063, LT 6.5 m - STA 2+068, RT 6.5 m
- DUCTS - DIRECT BURIAL (CABLE TV DUCT)**
- STA 10+780, RT 13.0 m - STA 10+823, RT 13.0 m
STA 10+823, RT 13.0 m - STA 10+863, RT 4.5 m
STA 10+863, RT 4.5 m - STA 10+870, RT 4.5 m

- DRAINAGE NOTES**
- (17) STA 10+590, RT 12.7 m - STA 10+640, RT 13.5 m
NEW STONE FILL DITCH, TYPE I
3000x48.0 m x 300 DEEP
- (18) STA 10+688, LT 20.0 m - LT 7.5 m
REMOVE EXISTING HEADWALL
REMOVE EXISTING 300x13 m RCP
- (19) STA 10+688, LT 20.0 m - LT 11.3 m
NEW STONE FILL DITCH, TYPE I
INV. IN = 35.170
INV. OUT = 33.990
900x8.7 m x 300 DEEP
- (20) STA 10+753, LT 13.1 m - STA 10+772, LT 14.6 m
NEW 450x20 m PCCSP OR CAAP OR RCP OR CPEP
INV. IN = 33.120
INV. OUT = 32.740
OUTLET WITH STONE FILL PAD, TYPE I
900x2.1 m x 300 DEEP
- (21) STA 10+756, RT 12.5 m - STA 10+770, RT 12.5 m
NEW 375x14 m PCCSP OR CAAP OR RCP OR CPEP
INV. IN = 32.600
INV. OUT = 32.530

- (22) STA 10+800, RT 12.6 m - STA 10+800, LT 15.8 m
NEW 450x29 m PCCSP OR CAAP OR RCP OR CPEP
INV. IN = 32.380
INV. OUT = 32.220
OUTLET WITH STONE FILL PAD, TYPE I
900x2.1 m x 300 DEEP
- (23) STA 10+844, LT 11.0 m - LT 25.0 m
REMOVE EXISTING HEADWALL
REMOVE EXISTING 300x14 m RCP
- (24) STA 10+848, RT 8.0 m - STA 10+857, RT 15.0 m
REMOVE EXISTING 300x11 m CMP
- (25) STA 10+860, LT 19.3 m - STA 10+870, LT 17.7 m
NEW GRASS LINED SWALE
INV. IN = 31.740
- (26) STA 10+865, RT 6.3 m - LT 6.3 m
D1 WITH GRATE, TYPE D
RIM EL. = 34.305
NEW 450x12 m PCCSP
INV. OUT = 32.490

- VT 78 CURVE DATA #3**
Δ = 56° 41' 19.4" RT
R = 300.000
T = 161.833
L = 296.821
E = 40.866
BANK = 0.076
- EAST ALBURG ROAD CURVE DATA #1**
Δ = 22° 47' 52.8" RT
R = 50.000
T = 10.081
L = 19.895
E = 1.006
BANK = NC
- EAST ALBURG ROAD CURVE DATA #2**
Δ = 04° 55' 51.7" RT
R = 150.000
T = 6.459
L = 12.909
E = 0.139
BANK = NC



THE CONTRACTOR SHALL NOT DISTURB THIS AREA PRIOR TO ARCHAEOLOGICAL CLEARANCE (ANTICIPATED SUMMER 2004).

**END CONSTRUCTION
STA 2+075.000
MATCH EXISTING**

DATUM
VERTICAL NAVD 88
HORIZONTAL NAD 83 (92)