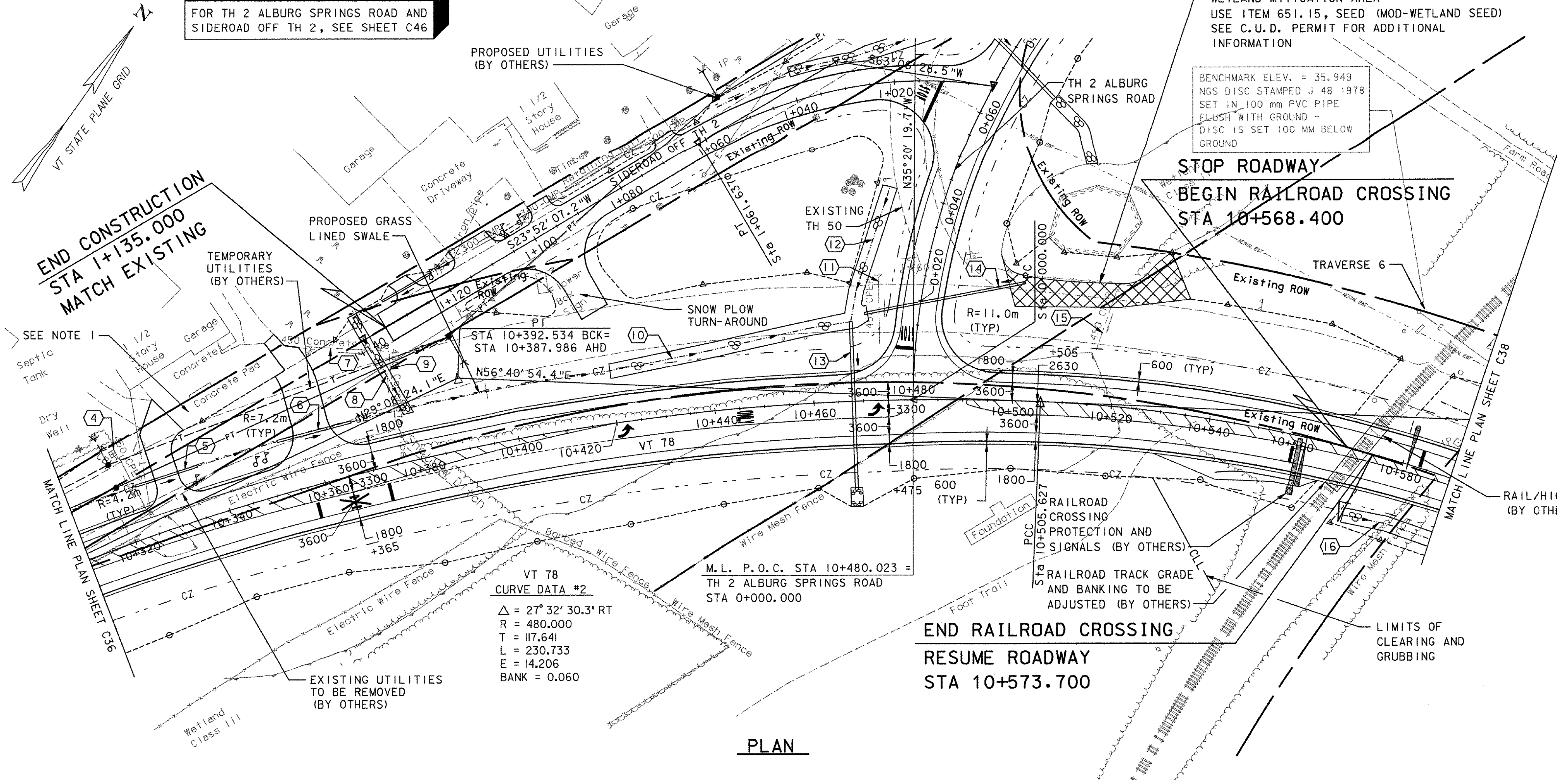


FOR TH 2 ALBURG SPRINGS ROAD AND
SIDEROAD OFF TH 2, SEE SHEET C46

WETLAND MITIGATION AREA
USE ITEM 651.15, SEED (MOD-WETLAND SEED)
SEE C.U.D. PERMIT FOR ADDITIONAL
INFORMATION

BENCHMARK ELEV. = 35.949
NGS DISC STAMPED J 48 1978
SET IN 100 mm PVC PIPE
FLUSH WITH GROUND -
DISC IS SET 100 mm BELOW
GROUND

NOTE:
1. A QUANTITY FOR ITEM 215.20, EXCAVATION OF
PETROLEUM CONTAMINATED SOILS CLASS I, HAS
BEEN INCLUDED FOR THIS AREA (STA 10+340, LT)
DUE TO THE PREVIOUS SITE USE.



PLAN



MEDIAN TAPER

- STA 10+310, RT (2200 mm) TO
STA 10+365, RT (3300 mm)
- STA 10+365, RT (3300 mm) TO
STA 10+420, RT (0 mm)
- STA 10+475, RT (3300 mm) TO
STA 10+590, RT (1350 mm)

TURN LANE TAPER

- STA 10+365, RT (0 mm) TO
STA 10+420, RT (3300 mm)

CONSTRUCT DRIVE

- STA 10+330, LT
50 BCP TYPE III, 4.9 m WIDE
- STA 10+360, LT
50 BCP TYPE III, 7.2 m WIDE

RELOCATE SINGLE MAILBOX SUPPORT

- STA 10+335, LT

RELOCATE MULTIPLE MAILBOX SUPPORT

- STA 10+349, LT

REMOVAL OF EXISTING FENCE

- STA 10+327, LT - STA 10+376, LT

REMOVING & RESETTING FENCE

- STA 10+372, RT - STA 10+406, RT

EROSION MATTING

- STA 10+310, LT - STA 10+324, LT
- STA 10+336, LT - STA 10+354, LT
- STA 10+366, LT - STA 10+420, LT

STEEL BEAM GUARDRAIL

- 10+553.7 RT. 10+561.3 RT.
- STA 10+554.8 RT - STA 10+558.6 RT
- STA 10+579.0 LT STA 10+587.4 LT.

MANUFACTURED TERMINAL SECTION - FLARED

- 10+542.3 RT. 10+553.0 RT.
- STA 10+543.4 RT - STA 10+554.8 RT
- STA 10+587.0 LT. STA 10+598.0 LT.

ANCHOR FOR STEEL BEAM GUARDRAIL

- STA 10+557, RT
- 10+560.0 RT.

DRAINAGE NOTES

- (4) STA 10+322, LT 18.3 m - LT 4.0 m
REMOVE EXISTING DI
REMOVE EXISTING 450x18 m CPEP
- (5) STA 10+323, LT 10.4 m - STA 10+337, LT 10.3 m
NEW 375x13 m PCCSP OR CAAP OR RCP OR CPEP
INV. IN = 39.121
INV. OUT = 39.023
- (6) STA 10+353, LT 10.3 m - STA 10+368, LT 10.3 m
NEW 450x15 m PCCSP OR CAAP OR
RCP CLASS IV OR CPEP
INV. IN = 38.758
INV. OUT = 38.537
- (7) STA 10+363, LT 27.0 m - 10+378, LT 23.0 m
REMOVE EXISTING 450x17 m RCP
- (8) STA 1+140, RT 5.0 m - STA 10+379, LT 10.3 m
NEW STONE FILL DITCH, TYPE I
1900x22.0 m x300 DEEP
INV. IN = 40.42 (MATCH EXISTING)
INV. OUT = 38.375
1000 WIDE DITCH WITH 1:4, LT AND
1:3, RT SIDE SLOPES
- (9) STA 10+378, LT 23.0 m - 10+378, LT 9.0 m
REMOVE EXISTING 450x14 m RCP
- (10) STA 10+378, LT 10.3 m - STA 10+468, LT 15.0 m
NEW STONE FILL DITCH, TYPE I
3000x48.0 m x300 DEEP

- (11) STA 10+474, LT 25.2 m - LT 11.4 m
REMOVE EXISTING 450x10 m CPEP
- (12) STA 0+013, LT 13.5 m - STA 0+040, LT 11.3 m
NEW STONE FILL DITCH, TYPE I
3000x27.0 m x300 DEEP
- (13) STA 10+468, LT 16.1 m - STA 10+468, RT 17.6 m
NEW 600x34 m PCCSP OR CAAP OR RCP OR CPEP
INV. IN = ~~35.500~~ 35.818
INV. OUT = ~~35.220~~ 35.572
OUTLET WITH STONE FILL PAD, TYPE I
2400x3.9 m x300 DEEP
- (14) STA 0+016, LT 11.0 m - STA 0+023, RT 20.0 m
NEW 450x34 m PCCSP OR CAAP OR RCP OR CPEP
INV. IN = ~~35.711~~ 35.820
INV. OUT = ~~35.551~~ 35.820
- (15) STA 10+516, LT 9.8 m - 10+520, LT 24.3 m
REMOVE EXISTING 450x13 m CPEP
- (16) STA 10+570, RT 13.4 m - STA 10+590, RT 12.2 m
NEW STONE FILL DITCH, TYPE I
3000x18.5 m x300 DEEP

LEGEND

- PROPOSED MAILBOX
- PROPOSED LANDSCAPING
- PROPOSED CHAIN-LINK FENCE
- PROPOSED PULL BOX
- PROPOSED OVERHEAD LIGHT
- PROPOSED UTILITY VAULT
- PROPOSED UNDERGROUND ELECTRICAL DUCT
- PROPOSED UNDERGROUND CABLE TV DUCT
- PROPOSED UNDERGROUND WIRED CONDUIT FOR NAVIGATIONAL LIGHTING
- PROPOSED AERIAL ELECTRIC, CABLE TV AND TELEPHONE
- PROPOSED AERIAL TELEPHONE
- TEMPORARY AERIAL ELECTRIC, CABLE TV AND TELEPHONE

**STATE OF VERMONT
AGENCY OF TRANSPORTATION**

Town Of	ALBURG-SWANTON	Bridge No.	2
Highway No.	VT 78	Log Sta.	
		Surv. Sta.	
VT 78 OVER MISSISQUOI BAY			
VT 78 ROADWAY PLAN (2 OF 10)			
Designed By	S. W. BEKIER	Drawn By	C. L. CILLEY
Checked By	Date	Bridge Design Supervisor	
J. A. MERCER	10/03	C. D. BAKER Date 10/03	
PROJECT	ALBURG-SWANTON	PROJECT NO.	BRF 036-1 (1)

DATUM
VERTICAL NAVD 88
HORIZONTAL NAD 83 (92)

VANASSE HANGEN BRUSTLIN, INC.

File No. ZE072PN2 Sheet C37 of C194
VHB NO. 50911 plot date: 10/23/2003