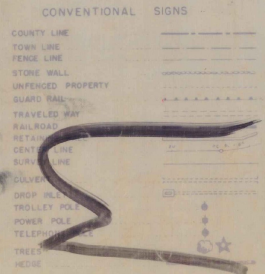
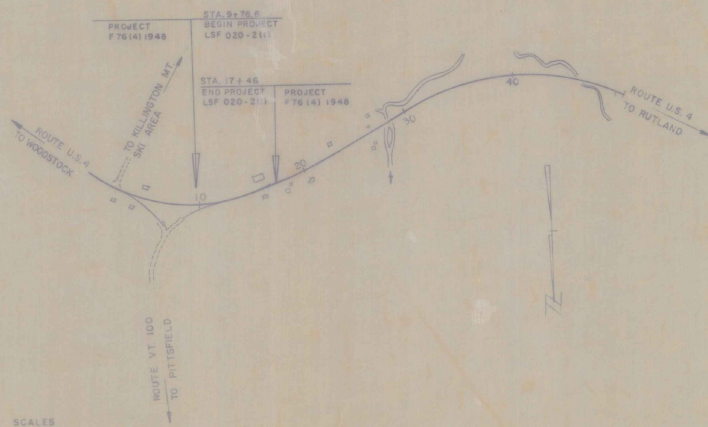
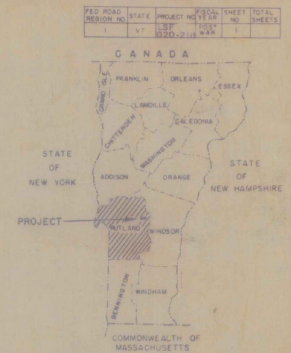
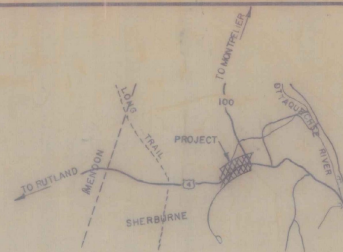


STATE OF VERMONT  
DEPARTMENT OF HIGHWAYS  
**PROPOSED IMPROVEMENT**

TOWN OF SHERBURNE  
U.S. ROUTE 4  
**WOODSTOCK-RUTLAND ROAD**

BEGINNING AT A POINT 6.289 MILES NORTHERLY OF THE BRIDGEWATER-SHERBURNE TOWN LINE AND EXTENDING NORTHERLY 0.123 MILE  
LENGTH OF PROJECT - 0.123 MILE



GROUND ELEVATION	SHIN	FEET LINE
GRADE ELEVATION	SHIN	FEET LINE
CURVE DATA		
DEFLECTION OF ANGLE	A	
DEGREE OF CURVE	D	
RADIUS OF CURVE	R	
TANGENT DISTANCE	T	
LENGTH OF CURVE	L	
EXTERNAL DISTANCE	E	
POINT OF INTERSECTION	PI	
POINT OF CURVE	P.C.	
POINT OF TANGENT	PT	
POINT ON TANGENT	POT	
POINT ON SUB-TANGENT	POST	

SCALES

TITLE	1" = 500'
TYPICAL	1" = 100'
PLAN	1" = 100'
PROFILE	HORIZONTAL 1" = 100'
VERTICAL	1" = 10'
CROSS SECTIONS	1" = 10'

THESE PLANS ARE SUBJECT TO SUCH REVISIONS AS MAY BE REQUIRED BY THE BUREAU OF PUBLIC ROADS OR THE COMMISSIONER OF HIGHWAYS.  
CONSTRUCTION IS TO BE CARRIED ON IN ACCORDANCE WITH THESE PLANS AND THE STANDARD SPECIFICATIONS FOR HIGHWAY AND BRIDGE CONSTRUCTION DATED APRIL, 1964, AS APPROVED BY THE BUREAU OF PUBLIC ROADS ON OCTOBER 12, 1964, HOLDING ALL SUBSEQUENT APPROVED REVISIONS AND SUCH RELATED SPECIFICATIONS AND SPECIAL PROVISIONS AS ARE INCORPORATED IN THESE PLANS.

DEPARTMENT OF COMMERCE BUREAU OF PUBLIC ROADS	
APPROVED	DATE
DIVISION ENGINEER	DATE
PROJECT S.T. NO. 020-211	
SHEET 1 OF SHEETS	

APPROVED <i>E. H. Stebbins</i> DATE 6/12/66	APPROVED <i>[Signature]</i> DATE 6/23/66	APPROVED <i>[Signature]</i> DATE 6/1/66	APPROVED <i>[Signature]</i> DATE 6/1/66	APPROVED <i>[Signature]</i> DATE 6/2/66
---	--	---	---	---

STATE OF VERMONT  
DEPARTMENT OF HIGHWAYS  
RIGHT-OF-WAY PLANS  
DETAIL SHEET  
A OF A

TABLE OF PROJECT PROPERTY ACQUISITION

PARCEL NO.	GRANTOR	SHEET NO.	BEGINNING STATION	ENDING STATION	TAKING	REM.	RIGHTS	TITLE TAKEN	DATE	TOWN OR CITY RECORDED	BK.	PG.	REMARKS
1	MERRILL, KENNETH & FLORABELL		9+76.6	17+46	3.0A:								

TABLE OF REVISIONS

REVISION NO.	SHEET NO.	DESCRIPTION OF REVISION	DATE	MADE BY	APPROVED BY

MADE BY: JGP DATE 6-2-66  
CHECKED BY: JMC DATE 6-3-66

----- PRESENT R.O.W.  
 - - - - - TAKING WITHOUT ACCESS  
 - - - - - TAKING WITHOUT ACCESS ALONG PROPERTY LINES  
 - - - - - TAKING WITH ACCESS  
 (P) PERMANENT EASEMENT  
 (T) TEMPORARY EASEMENT

LEGEND

SR SR SLOPE RIGHTS  
 P L P L PROPERTY LINE  
 Δ Δ Δ TOP OF CUT  
 O O O TOE OF SLOPE

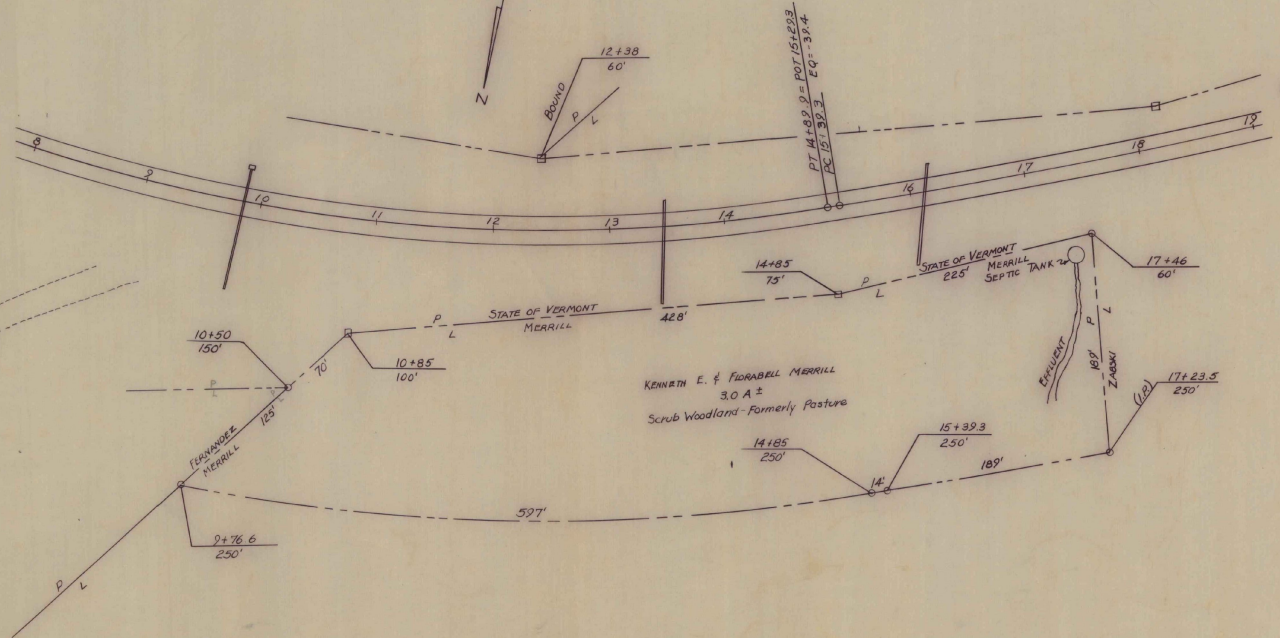
APPROVED Thomas C. Bennett DATE 6-3-66  
CHIEF OF ACQUISITION  
 APPROVED J.M. Senechal DATE 6-6-66  
HIGHWAY ENGINEER  
 APPROVED H.P. Kadigan DATE 6-6-66  
R.O.W. DIRECTOR

PROJECT SHERBURNE  
 NO. LSF 020-2(1)  
 SHEET 3 OF 3

ROUTE Vt 100  
TO MONTPELIER

ROUTE U.S. 4  
TO WOODSTOCK

ROUTE U.S. 4  
TO RUTLAND



3

SURVEYED BY Barnes DATE \_\_\_\_\_  
DRAWN BY \_\_\_\_\_ DATE \_\_\_\_\_  
TRACED BY Hay DATE \_\_\_\_\_  
SHERBURNE  
PROJ. LSF NO. 020-2(1)  
SHEET 2 OF 2

Vermont Agency of  
Transportation  
Phase III- Interstate  
#090303-01



INITIALS

Hanger 3650<sup>ONE</sup>

Ⓜ R.O.W.  
1966

SHERBURNE LSF-020-2(U)  
(U.S. RTE. 4) (Woodstock-Rutland Rd.)

Ⓜ  
1966