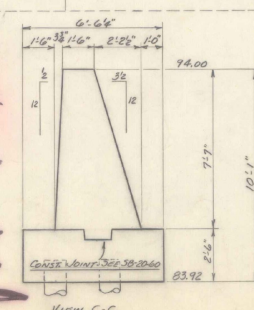


LIST OF SHEETS

1	DETAILS OF ABUTMENT NO. 1
2	" " " " NO. 2
3	DETAILS OF SUPERSTRUCTURE
4	REINFORCING STEEL DETAILS
5	CHANNEL BEG. TO 1/2
6	STANDARD DWG. SIG. 30 (H-20)
7	" " " " 30-3
8	" " " " 38-20-60
9	" " " " E-2



SUMMARY OF QUANTITIES

ITEM NO.	ITEM	UNIT	NET	OVERRUN	TOTAL	FINAL
101-B	SOLID ROCK EXCAVATION	C.Y.	6	-	6	
106-C	UNCLASSIFIED CHANNEL EXCAVATION	C.Y.	10	1	11	
107	STRUCTURE EXCAVATION	C.Y.	87	8	95	
361-B	CONTINUOUS CONCRETE PAVEMENT (MOD)	TEN	21	9	30	
378	JOINT SANDLER, HOT-POURED ELASTIC TYPE	L.A.	32	-	32	
401-B	CONCRETE - CLASS B (MOD)	C.Y.	84	4	88	
402	REINFORCING STEEL	LB.	3823	-	3823	
404-A	STRUCTURAL STEEL	LB.	2470	50	2520	
501	FURNISHING EQUIP FOR DENYING PILES	L.S.	1	-	1	
502-A	UNTREATED TIMBER PILING	L.F.	688	-	688	
503	SPLICES FOR STEEL PILING	EA.	70	-	70	
504	STEEL PILING	L.F.	70	-	70	
502-A	UNTREATED TIMBER PILING	L.F.	256	-	256	
574	PREPARING SURF. FOR WIDENING	L.S.	3	-	3	
318	TAR EMULSION FOR BRIDGE FLOORS	GAU.	51	-	51	

ITEM NO.	ITEM	UNIT	NET	OVERRUN	TOTAL	FINAL
106-A	CHAN. EXCAV. OF EARTH	C.Y.				
106-B	CHAN. EXCAV. OF ROCK	C.Y.				
106-C	UNCLASS. CHAN. EXCAV.	C.Y.	10	1	11	
107	STRUCT. EXCAV.	C.Y.	44	4	48	
401-B	CONC. CLASS B (MOD)	C.Y.	26	1	27	
402	REINF. STEEL (SEE REBAR STEEL DETS)	LBS.				
407	ASPHALTIC-ASB. COATING	S.Y.				
502-B	TREATED TIMBER PILING	L.F.				
503	SPLICES FOR STEEL PILING	EA.				
504	STEEL PILING	L.F.				
502-A	UNTREATED TIMBER PILING	L.F.	256	-	256	
101-B	SOLID ROCK EXCAVATION	C.Y.	3	-	3	
501	FURNISHING EQUIP FOR DENYING PILES	L.S.	1	-	1	

STATE OF VERMONT
DEPARTMENT OF HIGHWAYS

TOWN OF JOHNSON

ROUTE NO. 15 LOG STA. 146+93

BRIDGE WIDENING

DETAILS ABUTMENT NO. 1

SCALE 3/8" = 1'-0"

SURVEYED BY BURNEY

DRAWN BY E.T. 1/21 CHECKED BY R.P.G.

PROJECT NO. MA 62/25.03M/1960

SHEET 1 OF 9

PROJECT: Johnson

NUMBER: MA 62/25.03M/1960

DATE: 1/25/60

TYPE: Conc. T. Br. - Bridge Widening

CONTRACTOR: [Redacted]

DATE: 1/25/60

LOG STA. 146+93

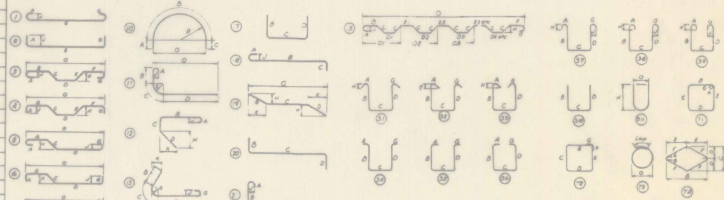
Item	No. Pieces	Size	Length	Mark	Type	A	B	C	D	E	F	G	H	J	K	D	O
1																	
2																	
3																	
4																	
5																	
6																	
7																	
8																	
9																	
10																	
11																	
12																	
13																	
14																	
15																	
16																	
17																	
18																	
19																	
20																	
21																	
22																	
23																	
24																	
25																	
26																	
27																	
28																	
29																	
30																	
31																	
32																	
33																	
34																	
35																	
36																	
37																	
38																	
39																	
40																	
41																	
42																	
43																	
44																	
45																	
46																	
47																	
48																	
49																	
50																	
51																	
52																	
53																	
54																	
55																	
56																	
57																	
58																	
59																	
60																	
61																	
62																	
63																	
64																	
65																	
66																	
67																	
68																	
69																	
70																	
71																	
72																	
73																	
74																	
75																	
76																	
77																	
78																	
79																	
80																	
81																	

- SUPERSTRUCTURE -

- ABUTMENT NO. 1 -

- ABUTMENT NO. 2 -

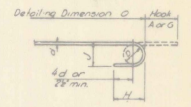
TYPICAL BAR BENDS



NOTES

- All dimensions are out to out of bar
- J dimensions on 180° hooks to be shown only where necessary to restrict hook size otherwise standard hooks are to be used
- Where 'L' is not shown, 'L' is to be equal to or less than 'H' where 'L' can exceed 'H', it should be shown
- 'H' dimension on stirrups to be shown where necessary to restrict hooks
- Where bars are to be bent more accurately than standard bending tolerances, bending dimensions which require closer marking should have limits indicated
- Figures in circles show types
- No allowance for bend curvature is to be made except for standard hook & radii in excess of same.

Item	No. Pieces	Size	Length	Mark	Type	A	B	C	D	E	F	G	H	J	K	D	O
163																	
164																	
165																	
166																	
167																	
168																	
169																	
170																	
171																	
172																	
173																	
174																	
175																	
176																	
177																	
178																	
179																	
180																	
181																	
182																	
183																	
184																	
185																	
186																	
187																	
188																	
189																	
190																	



STANDARD HOOK DETAIL

BAR SIZES

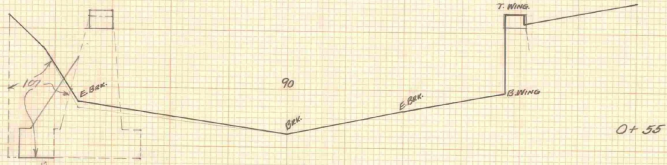
Equivalent Size	Present (Numbers)
1/2"	#2
3/8"	#3
1/2"	#4
5/8"	#5
3/4"	#6
7/8"	#7
1"	#8
1 1/8"	#9
1 1/4"	#10
1 3/8"	#11

Bar reinforcement metal shall conform to the requirements of the Standard Specifications for new Billet-Steel Concrete Reinforcement Bars (Intermediate Grade) Serial Designation AAS-10, M31-49 or its ASPT reissue. All bars shall be deformed to conform with A.S.T.M. Specification A 305-49.

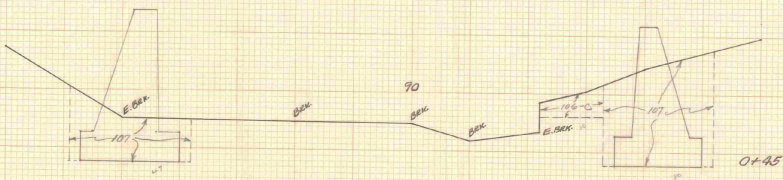
ESTIMATED QUANTITIES

Location	Amount
SUPERSTRUCTURE	3124
ABUTMENT No. 1.	334
ABUTMENT No. 2.	365
TOTAL	3823

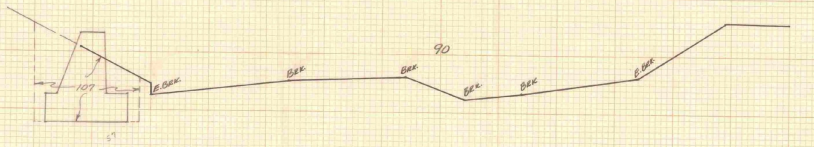
JOHNSON
REINFORCING STEEL DETAILS
MA 247/25.03.1/1960



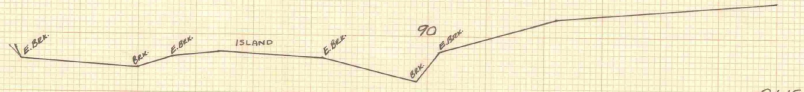
0+35



0+45



0+35

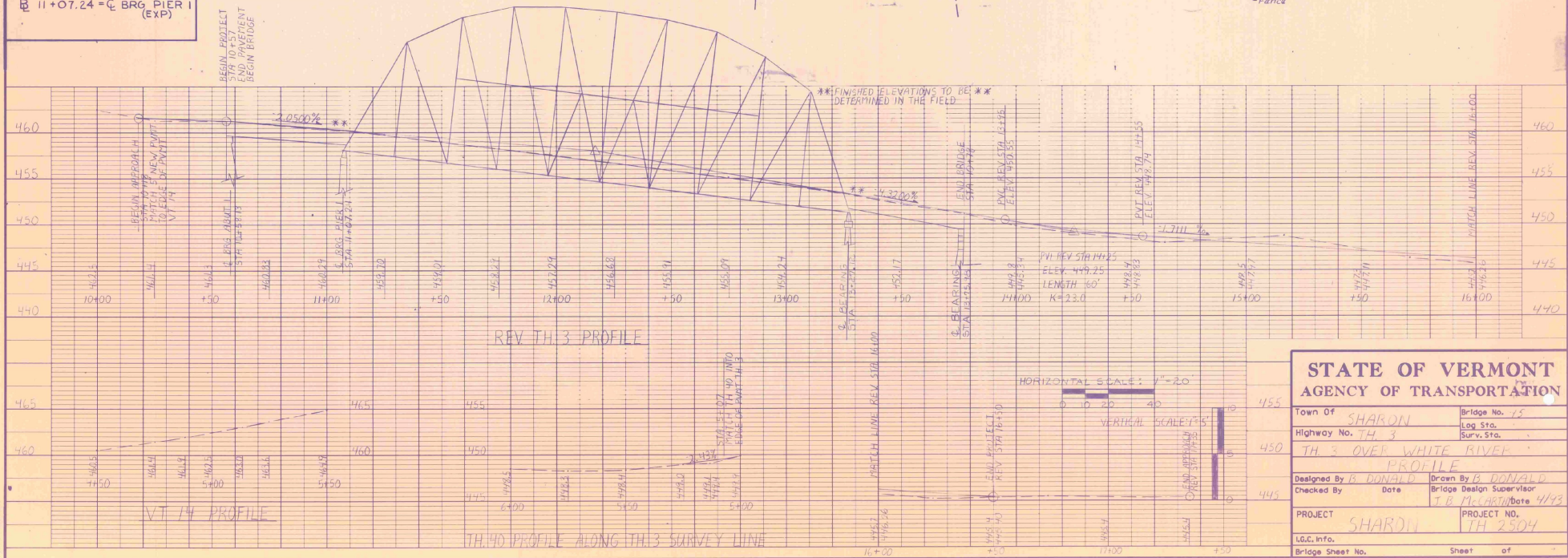
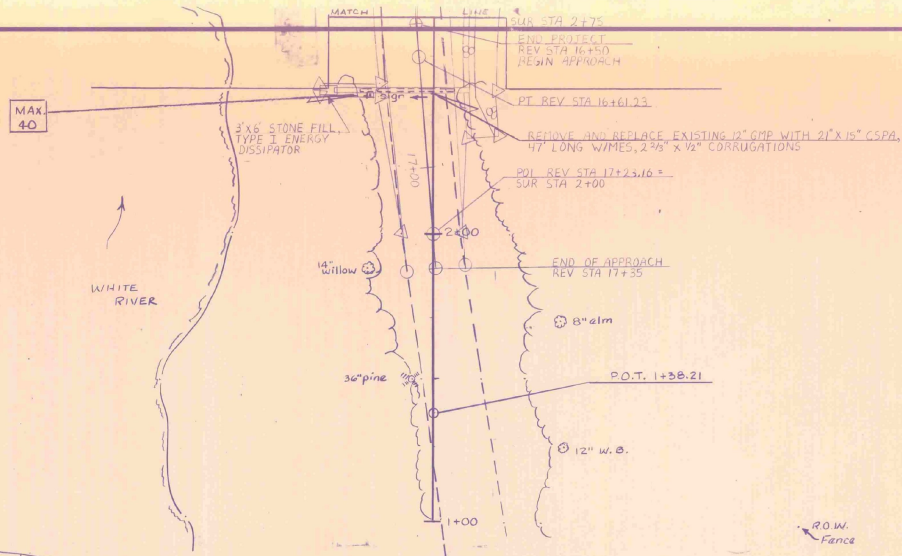
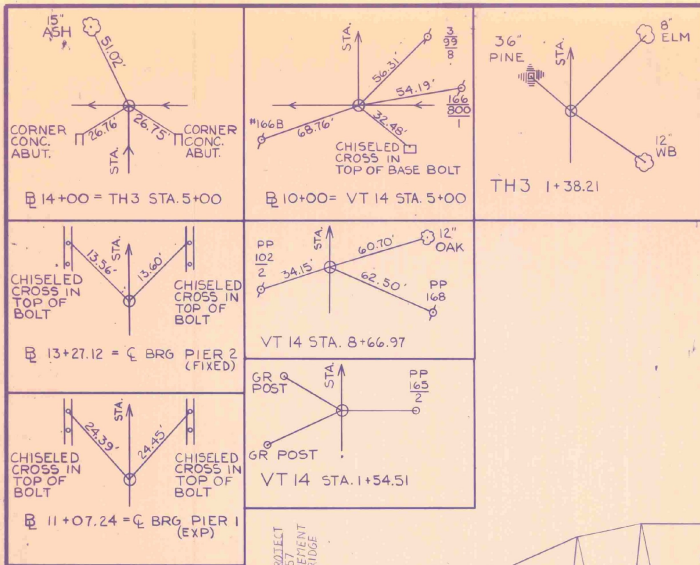


0+15

JOHNSON
CHANNEL SECTIONS

LEVELS BY BURLEY
 SECTIONS PLOTTED BY CEB CEB. BY WGS
 PLAN METERS BY CEB CEB. BY
 DRAWN BY NOV 2 1967 NO. 2203M/1780
 SHEET 5 OF 9

1 INCH = 5 FEET



STATE OF VERMONT	
AGENCY OF TRANSPORTATION	
Town Of SHARON	Bridge No. 15
Highway No. TH 3	Log Sta.
TH 3 OVER WHITE RIVER	
PROFILE	
Designed By B. DONALD	Drawn By B. DONALD
Checked By Date	Bridge Design Supervisor J. B. McARTHUR
PROJECT SHARON	PROJECT NO. TH 2504
I.G.C. Info.	
Bridge Sheet No. _____ of _____	

Bridge
1960

Johnson
MA 247j 25.03 M 1960

1960