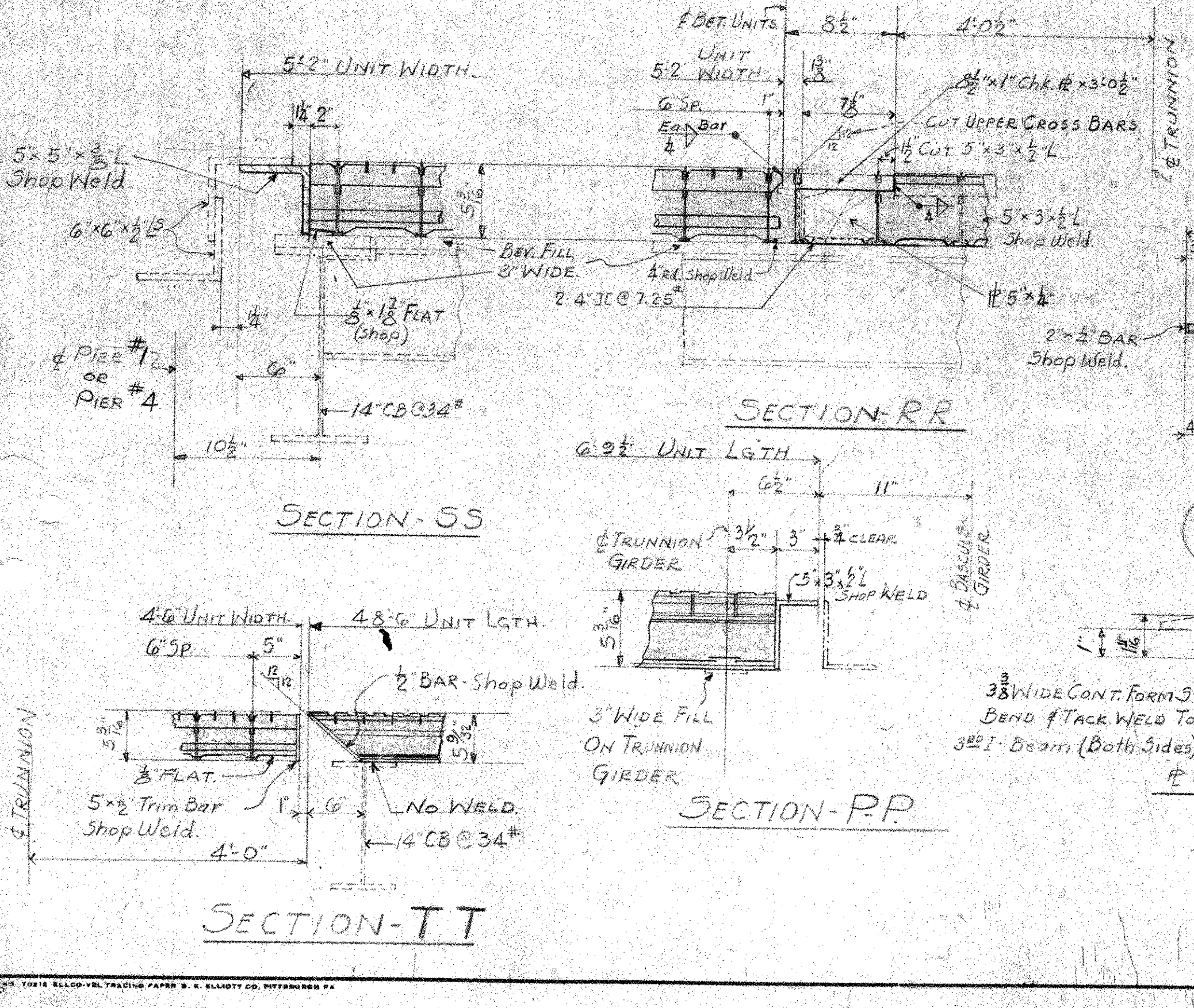
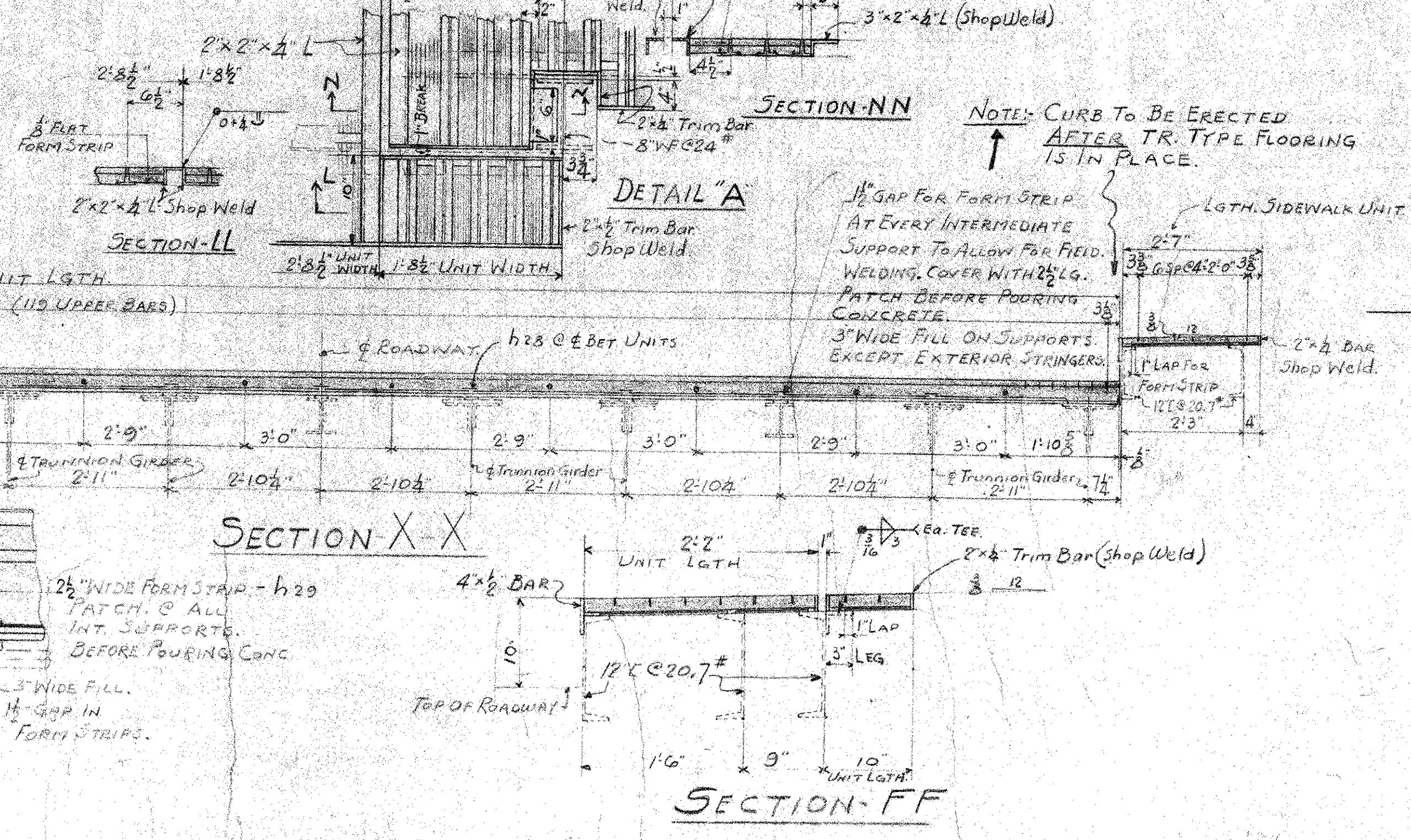


PLAN SOUTH SPAN



ERECTION NOTE:
 PLACE UNITS, WITH MARKED END OF UNITS, LOCATED AS SHOWN ON PLAN.
 DURING ERECTION OF UNITS, CARE MUST BE EXERCISED TO PLACE EACH UNIT IN ITS PROPER LOCATION, MEASURING IN ALL CASES FROM SOME FIXED POINT, AS OTHERWISE A CUMULATIVE ERROR IN SPACING WILL APPEAR, CAUSING THE SPACE FOR THE FINAL UNITS TO BE MORE OR LESS THAN THE ACTUAL WIDTH OF UNITS.



GENERAL NOTES:
 INSPECTION - MILL
 I-BEAM-LOK UNITS TO BE FURNISHED FLAT; ANY CAMBERING REQ'D. TO CONFORM TO SUPPORTING STRUCTURAL STEEL IS TO BE DONE IN FIELD.
 MATERIAL SHOWN IN DOT & DASH LINED NOT INCLUDED IN I-BEAM-LOK CONTRACT.
 SHOP PAINT: OPEN PORTION OF FLOORING TO HAVE ONE DIP COAT OF DU PONT DULUX RED LEAD PRIMER FILLED PORTION TO HAVE ONE COAT OF DU PONT DULUX RED LEAD PRIMER ON UNDERSIDE OF UNITS & ON OUTSIDE FACE OF TRIM MATERIAL.
 FOR NOTES ABOUT FORM STRIPS, SEE SHOP DETAILS.
 FOR FIELD WELDING, 2\"/>

FOR ADDITIONAL PLANS & SECT. SEE F-4853+2

5\"/>
 2\"/>
 DOUBLE LEAF BASCULE SPAN - (SOUTH) GRAND ISLE - NORTH HERO BRIDGE, COUNTY OF GRAND ISLE, VERMONT, AMERICAN BRIDGE DIV., ORDER J-9752 - CONT.

REVISED 4.22.52

UNITED STATES STEEL COMPANY
 SPECIALTY PRODUCTS DIVISION
 PITTSBURGH, PENNA.

DRAWN BY T.H.H. CHECKED BY F.W.B. DATE 1-16-52
 SHEET 1 OF 17 DWG. No. F-4857

TOTAL AREA OF TEE-TYPE (H) SIDEWALK 1,203 SQ. FT. MILL No. GP-2192-B
 TOTAL AREA 5\"/>