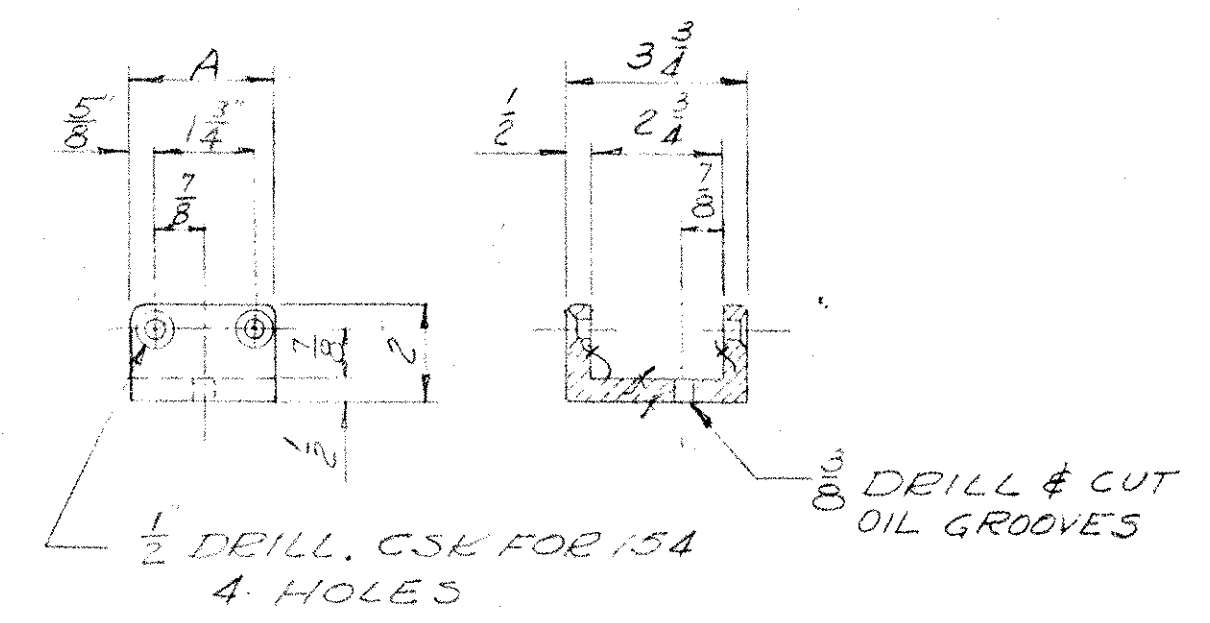
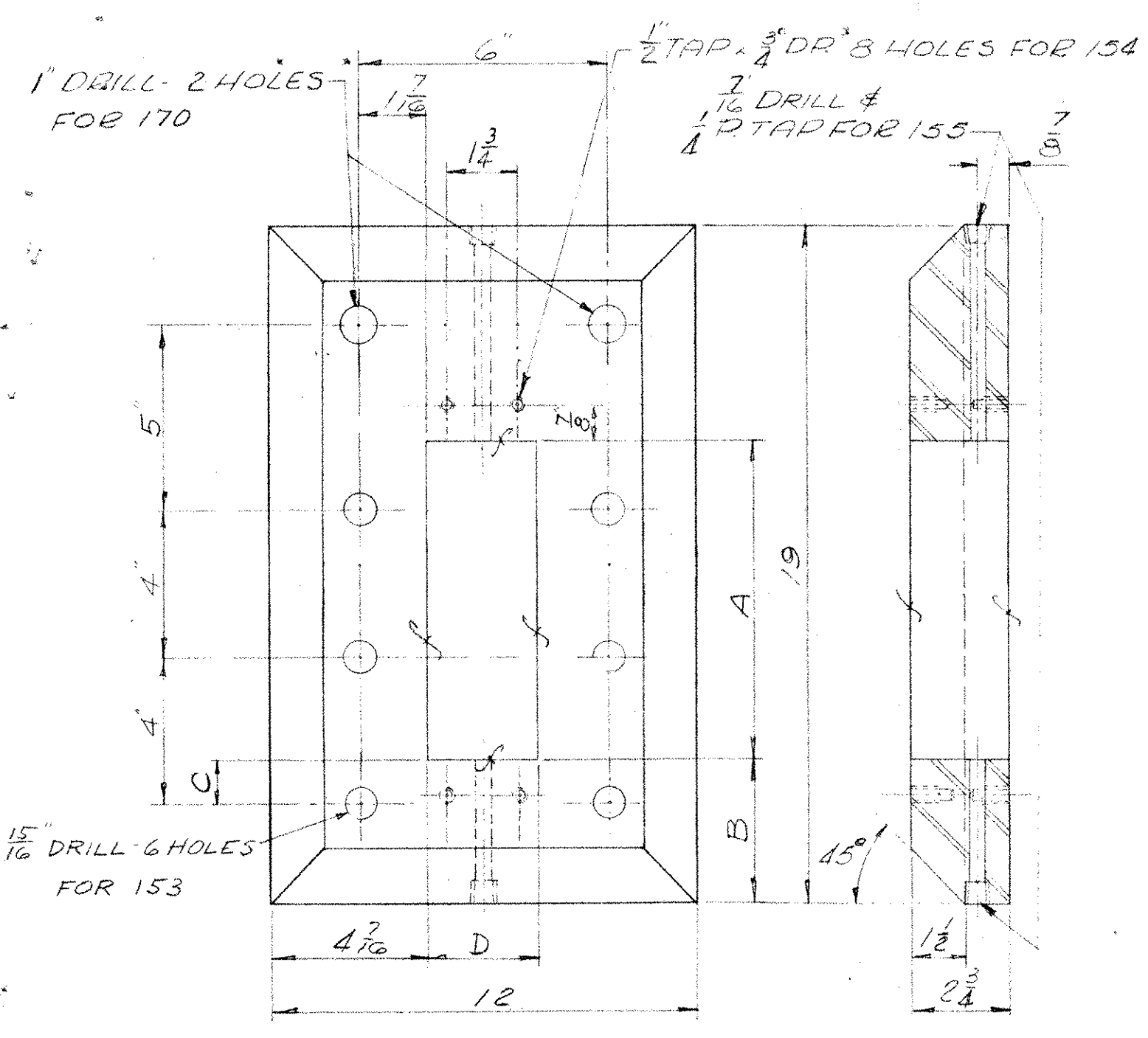
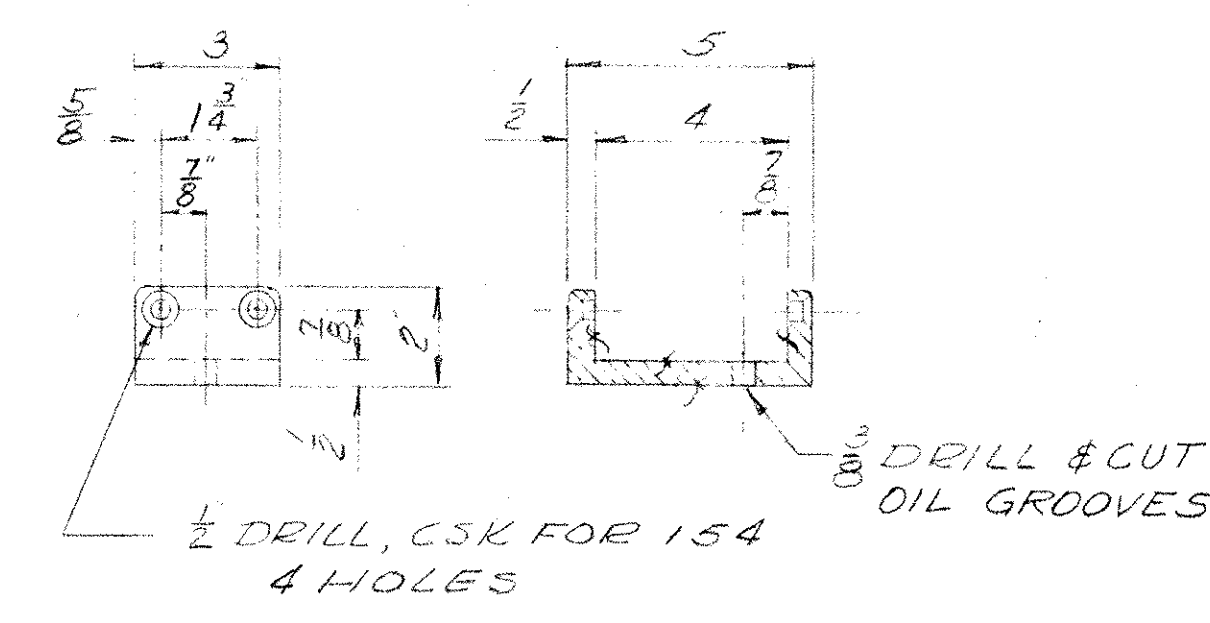


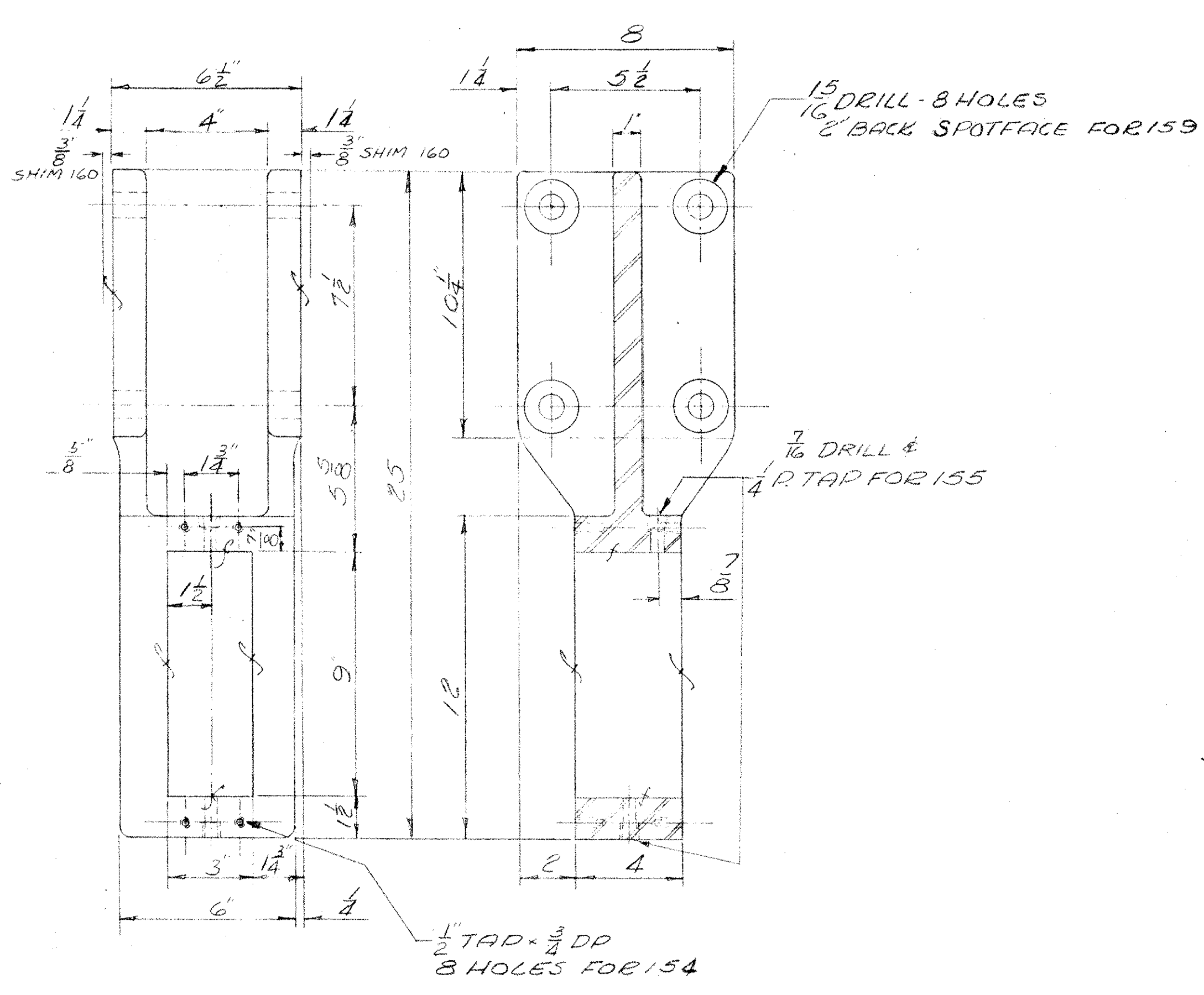
PC.	NAME	Q	MTL. PAT.	REMARKS
151	LOCK BAR GUIDE	2	C.S.	
152	GUIDE SHOE FOR 151, 156	8	BZ. CL.C.	
153	BOLT FOR 151 & 156	24	S	T.B. LIST
154	SCREW FOR 152 & 158	48	S	1/2 X 1 FLAT HEAD CAP
155	LUB. FTG. FOR 151, 156	12		ALEMITE A-1186
156	LOCK BAR GUIDE	2	C.S.	
157	LOCK BAR BEARING	2	C.S.	
158	GUIDE SHOE FOR 157	4	BZ. CL.C.	
159	BOLT FOR 157	16	S	T.B. LIST
160	SHIM FOR 157	4	S.	8 x 10 1/2 x 1/4 - 1/8 - 1/16 - 1/32
161	LOCK BAR	2	F.S.	
162	LOCK BAR CLEVIS	2	C.S. 9091	
163	CLEVIS PIN	2	T.P.S.	
164	COTTER PIN FOR 163	4	S	3/8 D. x 3"
165	LOCK BAR ROD END	2	C.S.	
166	BUSHING FOR 165	2	BZ. CL.C.	
167	LUB. FTG. FOR 165	2		ALEMITE A-1186
168	CONNECTING ROD	2	T.P.S.	
169	NUT FOR 168	4	S	2" 4 1/2 HEX.
170	BOLT FOR 171 & 176	8	S	1" HEX HD CAP, 5" UH, 1 L.W.
171	BEARING BASE	4	C.S.	
172	CAP FOR 171	4	C.S.	
173	BUSHING FOR 171	4	BZ. CL.C.	
174	BASE BOLT FOR 171	16	S	T.B. LIST
175	BOLT FOR 172	16	S	T.B. LIST
176	LINER FOR 172	8	FIBRE	1/4 x 2 x 5 3/8
177	LUB. FTG. FOR 172	4		ALEMITE A-1186
178	SHIM FOR 171	4	S.	5 x 13 1/4, 1/8, 1/16, 1/32
179	THRUST WASHER FOR 201	2	BZ. CL.C.	



152 GUIDE SHOE FOR 151, 156
BZ. CL.C.
4 REQ. A = 3 3/8
4 REQ. A = 3"



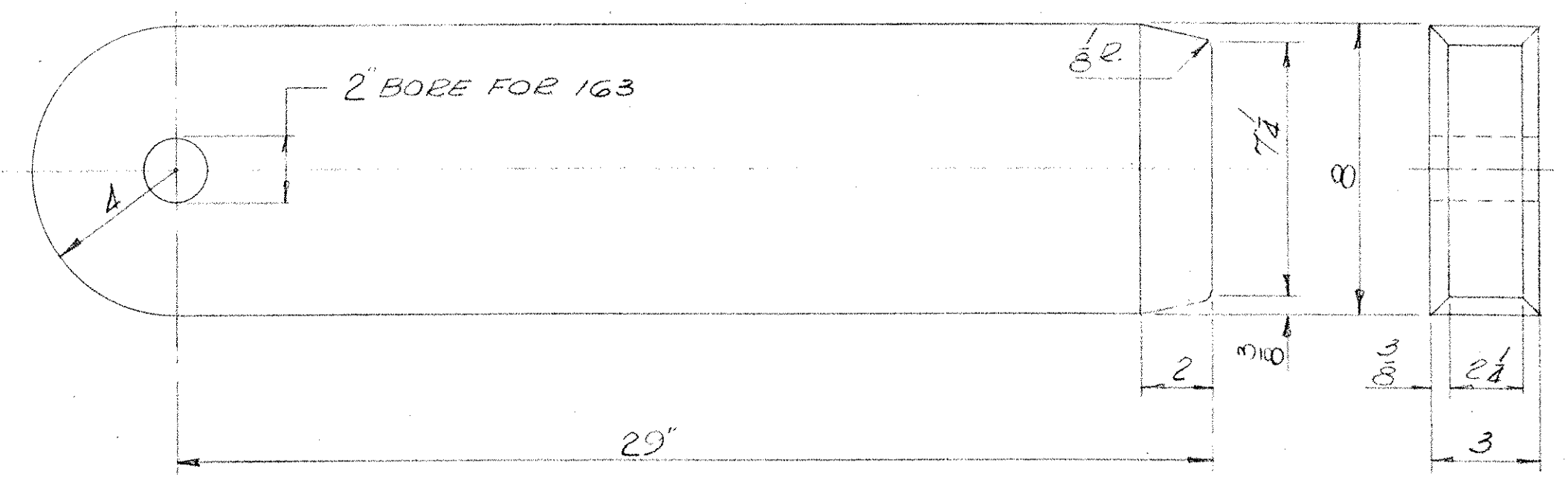
158 GUIDE SHOE FOR 157
4 REQ. BZ. CL.C.



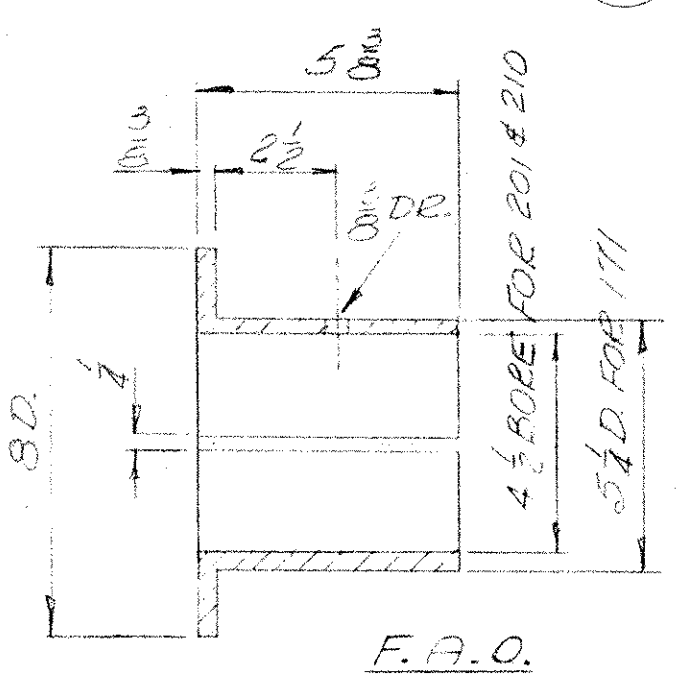
157 LOCK BAR BEARING
2 REQ. C.S. PATT.

- 151 2 REQ. A = 9 3/8", B = 3 1/8", C = 1 5/8", D = 3 1/8"
156 2 REQ. A = 9", B = 4", C = 1", D = 3"

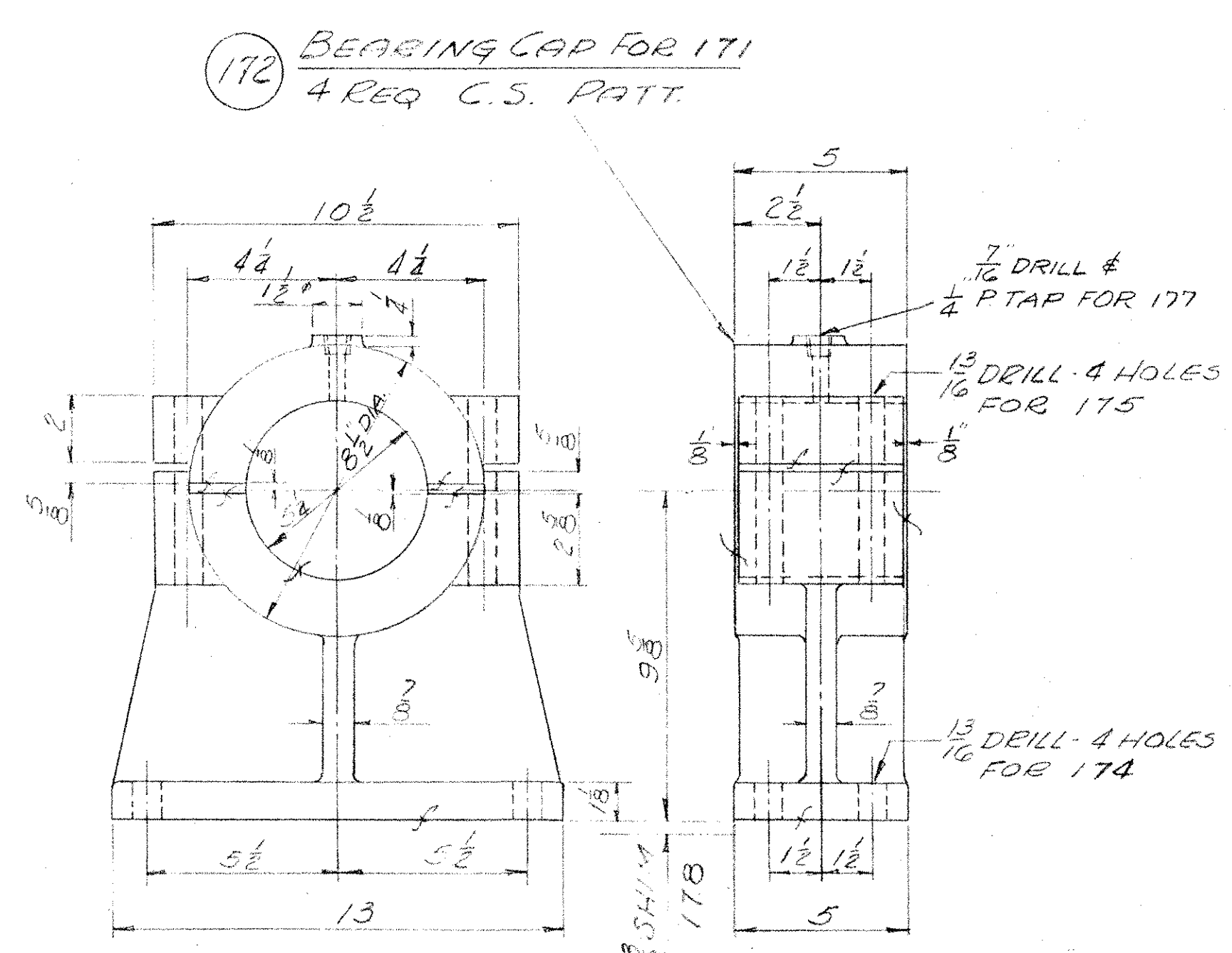
LOCK BAR GUIDE
C.S. PATT.



161 LOCK BAR
2 REQ. F.S.

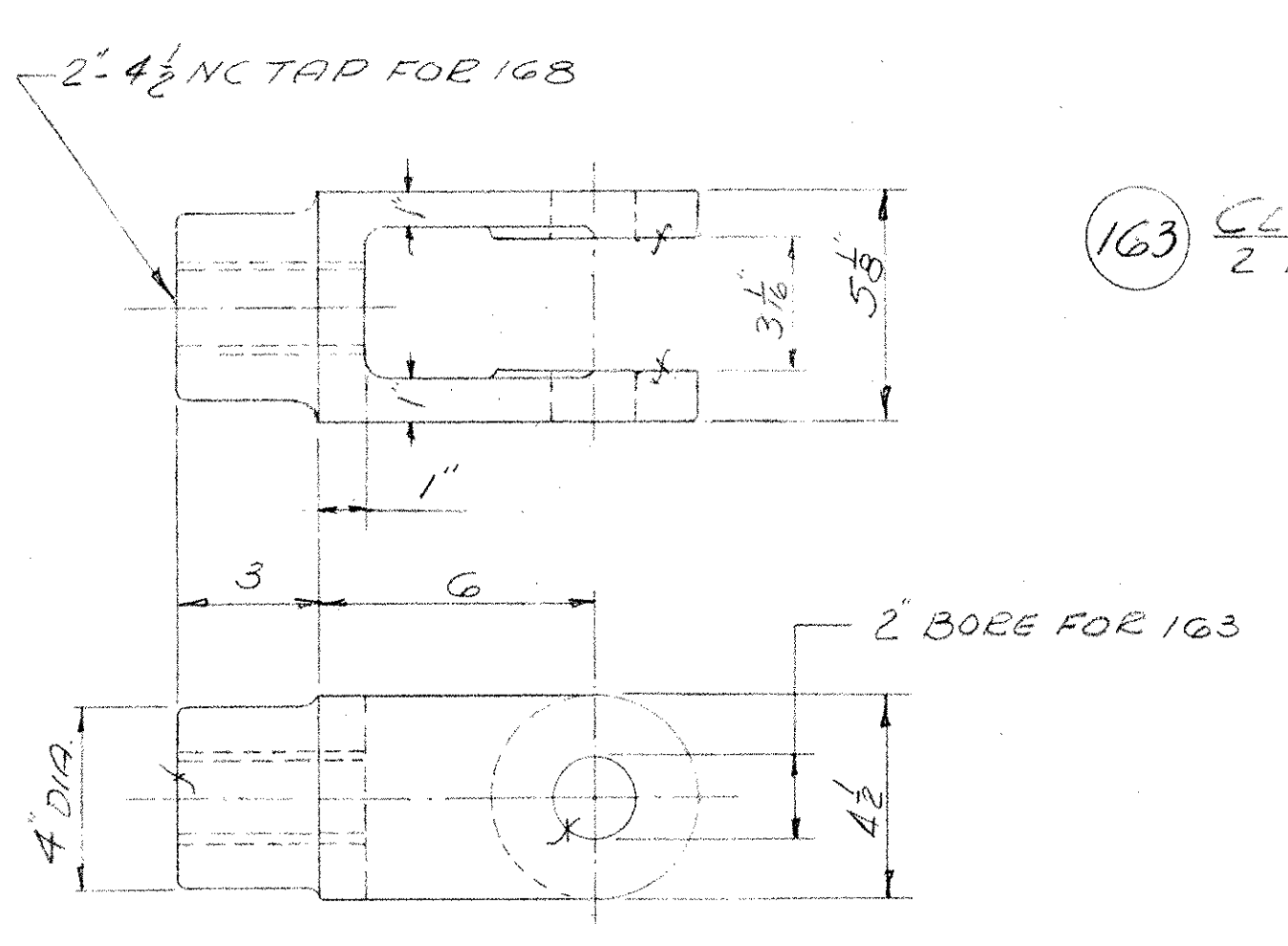


170 BUSHING FOR 171
4 REQ. BZ. CL.C.

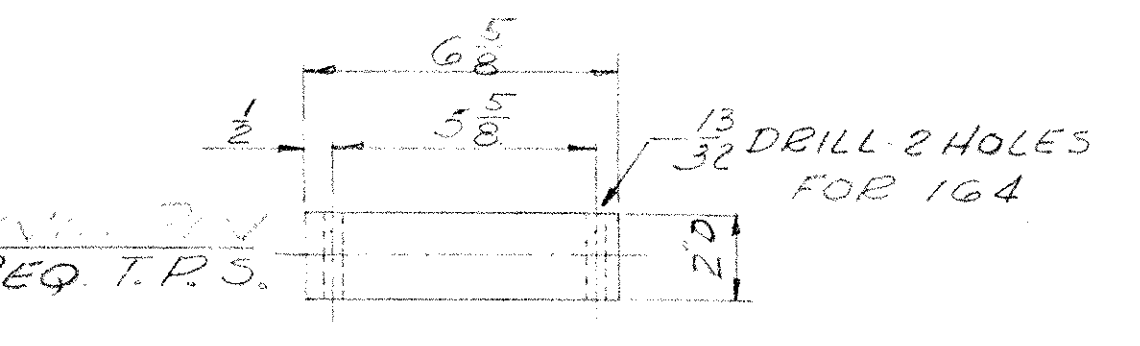


172 BEARING CAP FOR 171
4 REQ. C.S. PATT.

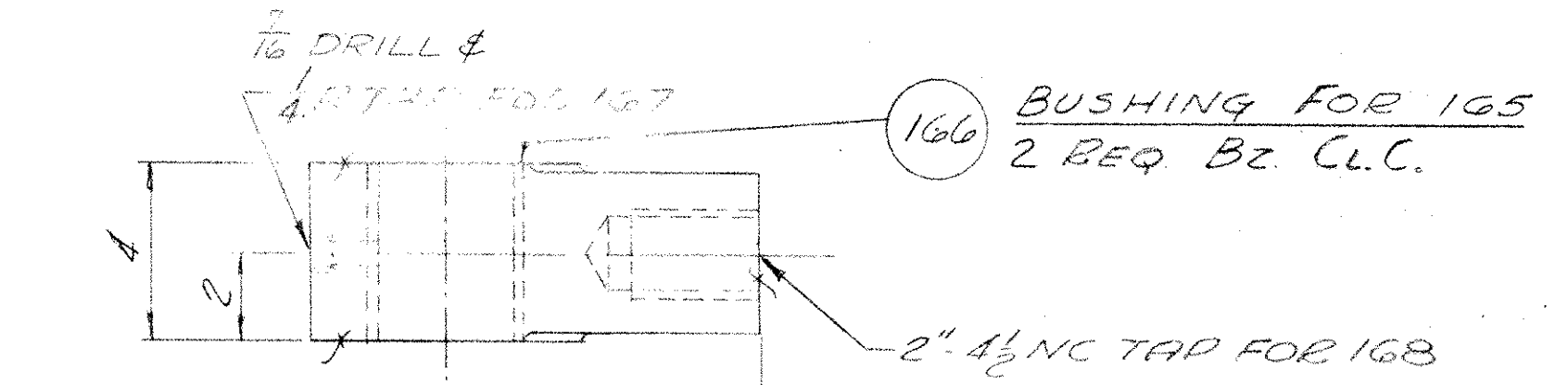
179 THRUST WASHER FOR 201
2 REQ. BZ. CL.C.



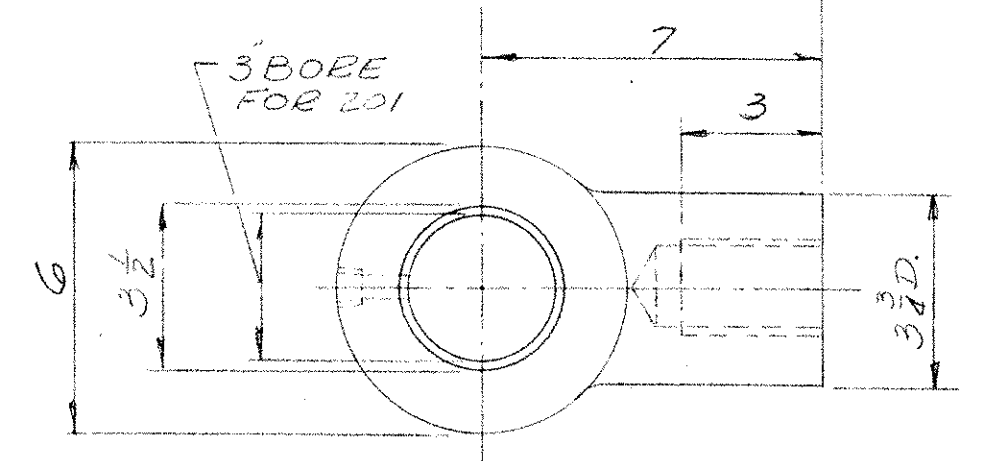
162 LOCK BAR CLEVIS
2 REQ. C.S. PATT. 9091



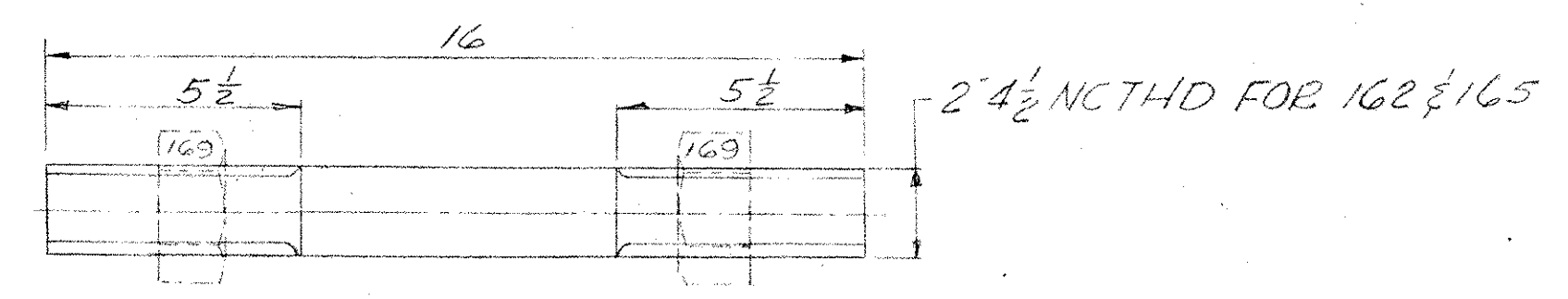
163 CLEVIS PIN
2 REQ. T.P.S.



166 BUSHING FOR 165
2 REQ. BZ. CL.C.



165 LOCK BAR ROD END
2 REQ. C.S. PATT.



168 CONNECTING ROD
2 REQ. T.P.S.

SPECIFICATIONS _____
INSPECTION _____

GENERAL NOTES
ALL STEEL CASTINGS & FORGINGS TO BE ANNEALED
SPOT FACE FOR ALL BOLT HEADS & NUTS
SCRIBE PITCH LINES ON BOTH SIDES OF ALL GEARS
SHOP PAINT—ONE COAT—
FINISHED SURFACES COATED—
CUT OIL GROOVES IN ALL BEARINGS UNLESS NOTED
ALL SHIMS TO BE DRILLED

S. O. D-610 CONTRACT _____

GRAND ISLE-NORTH HERO
BAScule BRIDGE, VERMONT

THE EARLE GEAR AND MACHINE COMPANY
4707 TO 4715 STENTON AVENUE
PHILADELPHIA 44, PA.

DRAWN BY: MCD APPROVED BY: _____
CHECKED BY: R.W.D. REV. APPV. _____
DATE: 10-16-51 REV. APPV. _____
SHEET 7 OF DWG. NO. 5626E-30