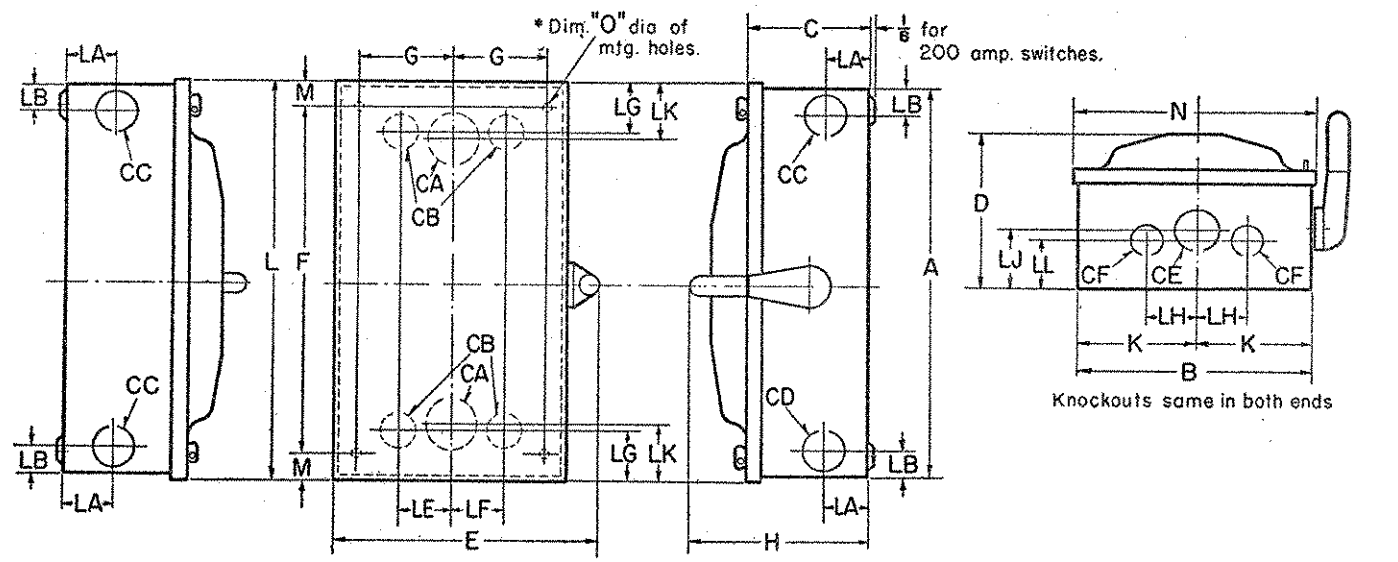


WESTINGHOUSE
SAFETY SWITCHES
DOUBLE THROW
200, 400, AND 600 AMPERES
30-130
DIMENSION SHEET



LINE NO.	DIMENSIONS IN INCHES													KNOCKOUT LOCATIONS				CONDUIT SIZES				
	A	B	C	E	F	G	H	K	L	M	N	LA	LB	LE	LG	LJ	LK	LL	CA	CB	CE	CF
1	27 1/2	13 1/2	0	17 1/2	28 1/2	9 1/2	13 1/2	6 1/2	22 1/2	1 1/2	14 1/2	1 1/2	3 1/2	2 1/2	2 1/2	2 1/2	2 1/2	2	1 1/2	2	1 1/2	1 1/2
2	36 1/2	13 1/2	0	17 1/2	34 1/2	9 1/2	13 1/2	6 1/2	30 1/2	1 1/2	14 1/2	2 1/2	3 1/2	2 1/2	2 1/2	2 1/2	2 1/2	2	1 1/2	2	1 1/2	1 1/2
3	44 1/2	13 1/2	0	17 1/2	42 1/2	9 1/2	13 1/2	6 1/2	44 1/2	1 1/2	14 1/2	2 1/2	3 1/2	2 1/2	2 1/2	2 1/2	2 1/2	2	1 1/2	2	1 1/2	1 1/2
4	27 1/2	17 1/2	0	20 1/2	25 1/2	7 1/2	13 1/2	6 1/2	27 1/2	1 1/2	17 1/2	1 1/2	3 1/2	4	2 1/2	3	2 1/2	2 1/2	2	2 1/2	2	2 1/2
5	36 1/2	17 1/2	0	20 1/2	34 1/2	7 1/2	13 1/2	6 1/2	34 1/2	1 1/2	17 1/2	2 1/2	3 1/2	4	2 1/2	3	2 1/2	2 1/2	2	2 1/2	2	2 1/2
6	44 1/2	17 1/2	0	20 1/2	42 1/2	7 1/2	13 1/2	6 1/2	44 1/2	1 1/2	17 1/2	2 1/2	3 1/2	4	2 1/2	3	2 1/2	2 1/2	2	2 1/2	2	2 1/2
7	27 1/2	21 1/2	0	24 1/2	25 1/2	9 1/2	13 1/2	10 1/2	27 1/2	1 1/2	22 1/2	2 1/2	3 1/2	4	2 1/2	3	2 1/2	2 1/2	2	2 1/2	2	2 1/2
8	36 1/2	21 1/2	0	24 1/2	34 1/2	9 1/2	13 1/2	10 1/2	34 1/2	1 1/2	22 1/2	2 1/2	3 1/2	4	2 1/2	3	2 1/2	2 1/2	2	2 1/2	2	2 1/2
9	44 1/2	21 1/2	0	24 1/2	42 1/2	9 1/2	13 1/2	10 1/2	44 1/2	1 1/2	22 1/2	2 1/2	3 1/2	4	2 1/2	3	2 1/2	2 1/2	2	2 1/2	2	2 1/2
10	32 1/2	15 1/2	11 1/2	18 1/2	30	6 1/2	14 1/2	7 1/2	32 1/2	1 1/2	15 1/2	3	3 1/2	4 1/2	3 1/2	3 1/2	3 1/2	3	2 1/2	3	2 1/2	2 1/2
11	50 1/2	15 1/2	11 1/2	18 1/2	48	6 1/2	14 1/2	7 1/2	50 1/2	1 1/2	15 1/2	3	3 1/2	4 1/2	3 1/2	3 1/2	3 1/2	3	2 1/2	3	2 1/2	2 1/2
12	58 1/2	15 1/2	11 1/2	18 1/2	54	6 1/2	14 1/2	7 1/2	58 1/2	1 1/2	15 1/2	3	3 1/2	4 1/2	3 1/2	3 1/2	3 1/2	3	2 1/2	3	2 1/2	2 1/2
13	32 1/2	20 1/2	11 1/2	23 1/2	30	6	14 1/2	10 1/2	32 1/2	1 1/2	20 1/2	3	3 1/2	4 1/2	3 1/2	3 1/2	3 1/2	3	2 1/2	3	2 1/2	2 1/2
14	50 1/2	20 1/2	11 1/2	23 1/2	48	6	14 1/2	10 1/2	50 1/2	1 1/2	20 1/2	3	3 1/2	4 1/2	3 1/2	3 1/2	3 1/2	3	2 1/2	3	2 1/2	2 1/2
15	58 1/2	20 1/2	11 1/2	23 1/2	54	6	14 1/2	10 1/2	58 1/2	1 1/2	20 1/2	3	3 1/2	4 1/2	3 1/2	3 1/2	3 1/2	3	2 1/2	3	2 1/2	2 1/2
16	32 1/2	24 1/2	13 1/2	27 1/2	30	11	14 1/2	12 1/2	32 1/2	1 1/2	24 1/2	3 1/2	3 1/2	5	3 1/2	3 1/2	3 1/2	3	2 1/2	3	3 1/2	3
17	50 1/2	24 1/2	13 1/2	27 1/2	48	11	14 1/2	12 1/2	50 1/2	1 1/2	24 1/2	3 1/2	3 1/2	5	3 1/2	3 1/2	3 1/2	3	2 1/2	3	3 1/2	3
18	58 1/2	24 1/2	13 1/2	27 1/2	54	11 1/2	14 1/2	12 1/2	58 1/2	1 1/2	24 1/2	3 1/2	3 1/2	5	3 1/2	3 1/2	3 1/2	3	2 1/2	3	3 1/2	3
19	42 1/2	18 1/2	13 1/2	21 1/2	40	8	15 1/2	9 1/2	42 1/2	1 1/2	18 1/2	3 1/2	3 1/2	2 1/2	3 1/2	3 1/2	3 1/2	3	2 1/2	3	3 1/2	3
20	63 1/2	18 1/2	13 1/2	21 1/2	61	8	15 1/2	9 1/2	63 1/2	1 1/2	18 1/2	3 1/2	3 1/2	2 1/2	3 1/2	3 1/2	3 1/2	3	2 1/2	3	3 1/2	3
21	42 1/2	22 1/2	13 1/2	25 1/2	40	10	15 1/2	11 1/2	42 1/2	1 1/2	22 1/2	3 1/2	3 1/2	3	3 1/2	3 1/2	3 1/2	4	3 1/2	3 1/2	3 1/2	3
22	63 1/2	22 1/2	13 1/2	25 1/2	61	10	15 1/2	11 1/2	63 1/2	1 1/2	22 1/2	3 1/2	3 1/2	3	3 1/2	3 1/2	3 1/2	4	3 1/2	3 1/2	3 1/2	3
23	42 1/2	26 1/2	13 1/2	29 1/2	40	12	15 1/2	13 1/2	42 1/2	1 1/2	26 1/2	3 1/2	3 1/2	3	3 1/2	3 1/2	3 1/2	4 1/2	3 1/2	3 1/2	3 1/2	3
24	63 1/2	26 1/2	13 1/2	29 1/2	61	12	15 1/2	13 1/2	63 1/2	1 1/2	26 1/2	3 1/2	3 1/2	3	3 1/2	3 1/2	3 1/2	4 1/2	3 1/2	3 1/2	3 1/2	3

*O-Mounting hole dimension %.
 71% for LE and LF, 5% for LB.

NOT TO BE USED FOR CONSTRUCTION PURPOSES UNLESS IDENTIFIED **194-3767-1**
 EFFECTIVE JANUARY, 1951

Supersedes D.S. 30-130, Page 11, dated February, 1949; Page 12 is New Information

WESTINGHOUSE ELECTRIC CORPORATION • BEAVER PLANT • STD. CONTROL DIV. • BEAVER, PA.

EX-23-21; D-3-23; C-3-22; CHH; Classified File