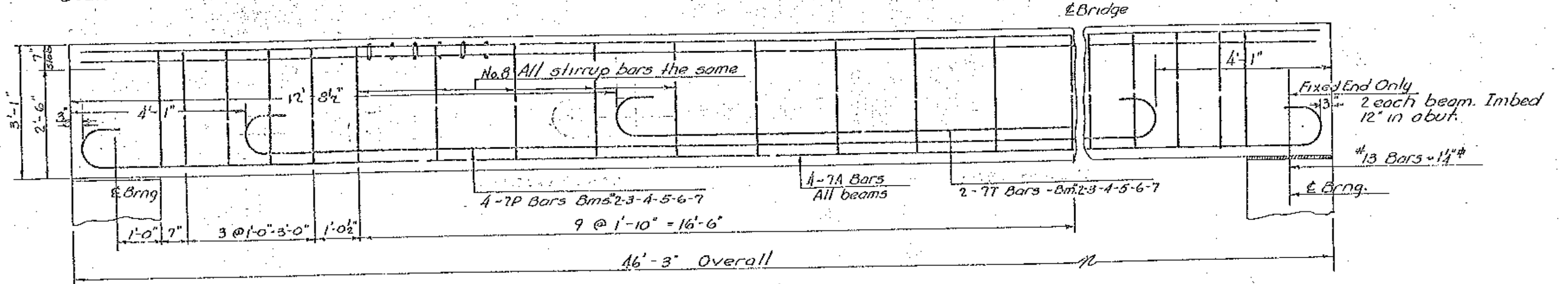
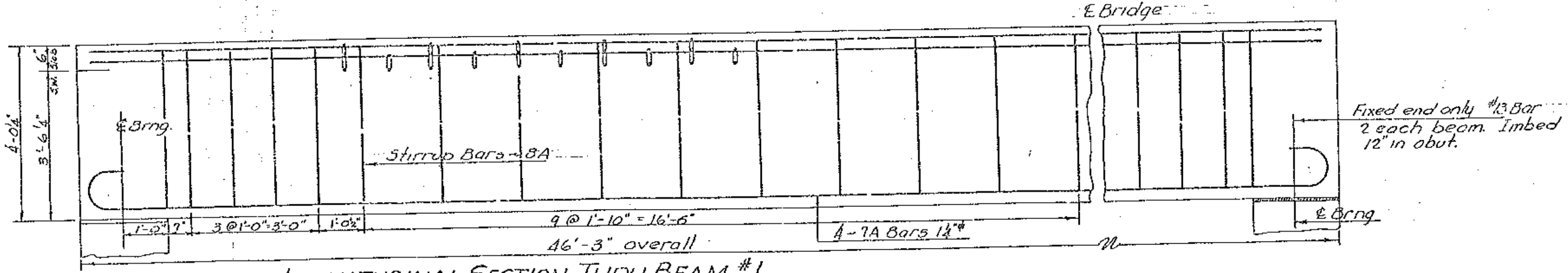


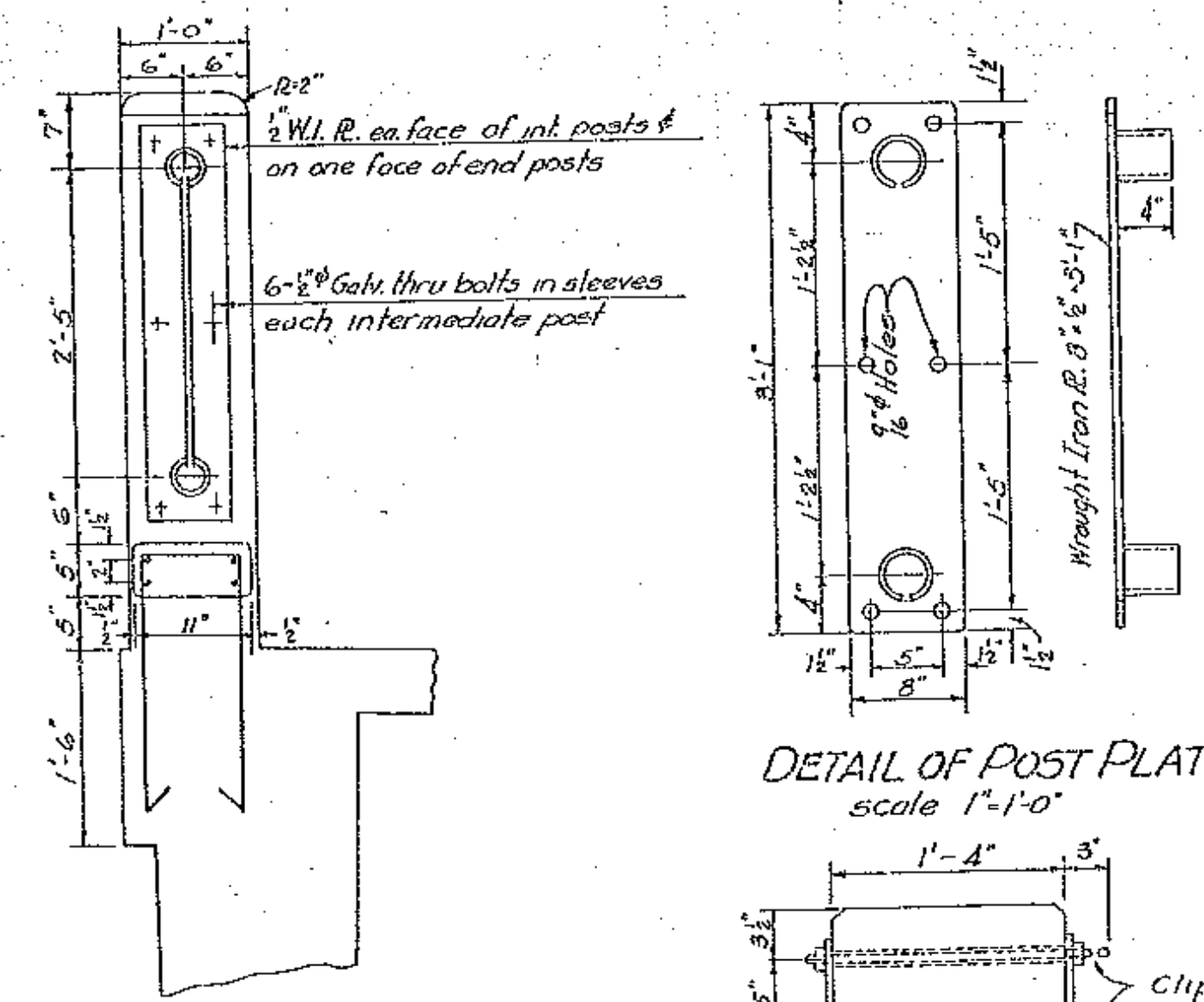
SECTION
scale 1/2"=1'-0"



LONGITUDINAL SECTION THRU BEAMS #2-3-4-5-6-7
scale 1/2"=1'-0"



LONGITUDINAL SECTION THRU BEAM #1
scale 1/2"=1'-0"

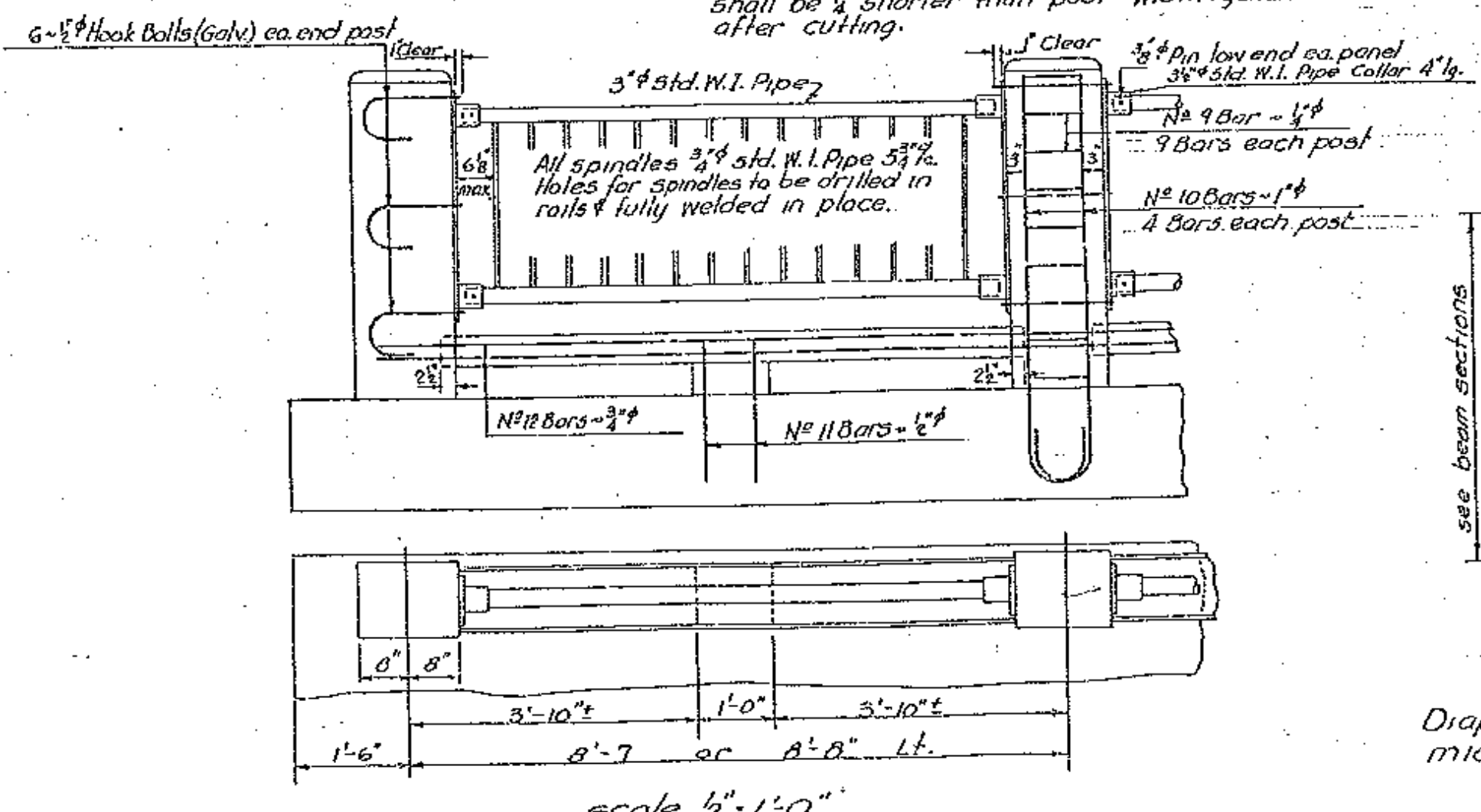


NOTE:
Collar 3/4" std. pipe 4' long, weld to plate with 1/2" continuous fillet weld inside & outside. Collar to be split & spread to form an inside dia. of 3 3/4".
Plate & collars shall be galvanized after assembly in accordance with Item #51, Standard Road & Bridge Specs, Vt. Dept. of Highways.

DETAIL OF POST PLATE
scale 1"=1'-0"

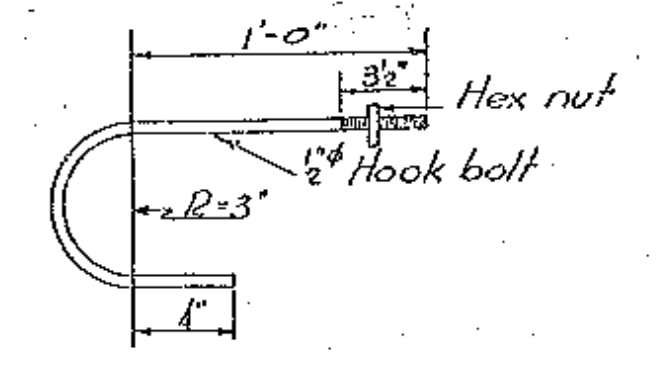
BOLT DETAIL
scale 1"=1'-0"

6-1/2" thru bolts in 4" pipe sleeves. Bolts to be long enough to erect plates on forms & then clipped after railing is erected. Bolts & nuts shall be galvanized after threading. Pipe sleeves shall be 1/2" shorter than post width & galvanized after cutting.



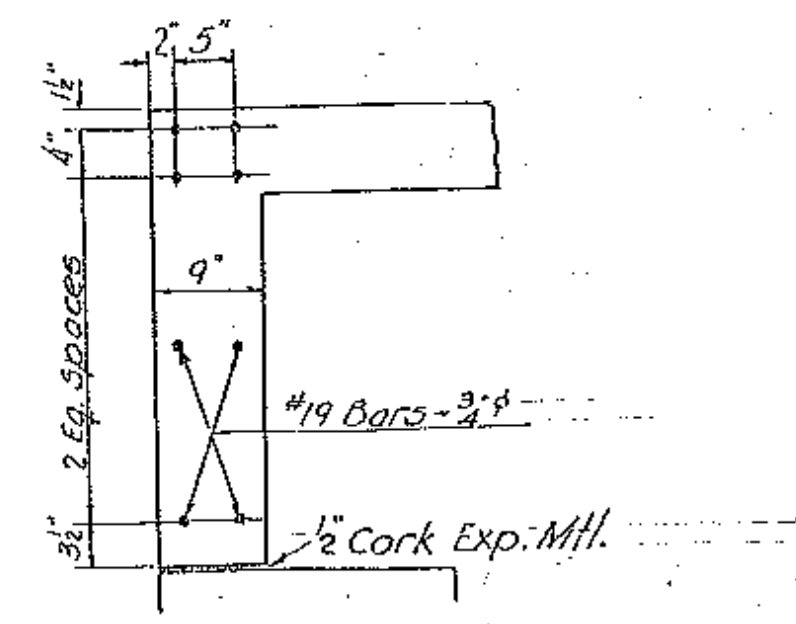
DIAPHRAGM DETAIL
scale 1/2"=1'-0"

Diaphragms shall be located at midspan



HOOK BOLT
scale 1 1/2"=1'-0"

To be paid for as structural steel.



SECTION THRU CURTAIN WALL

ESTIMATED QUANTITIES

BARTON
ORLEANS VILLAGE BRIDGE
S.A. 29-1946
scale as noted

Surveyed by
Designed by L.M.B.
Drawn by H.W.S.
Traced by H.W.S.
Checked by J.L.H.
Series SA. No. 29-1946 Filed
Sheet 3 of 10 Sheets