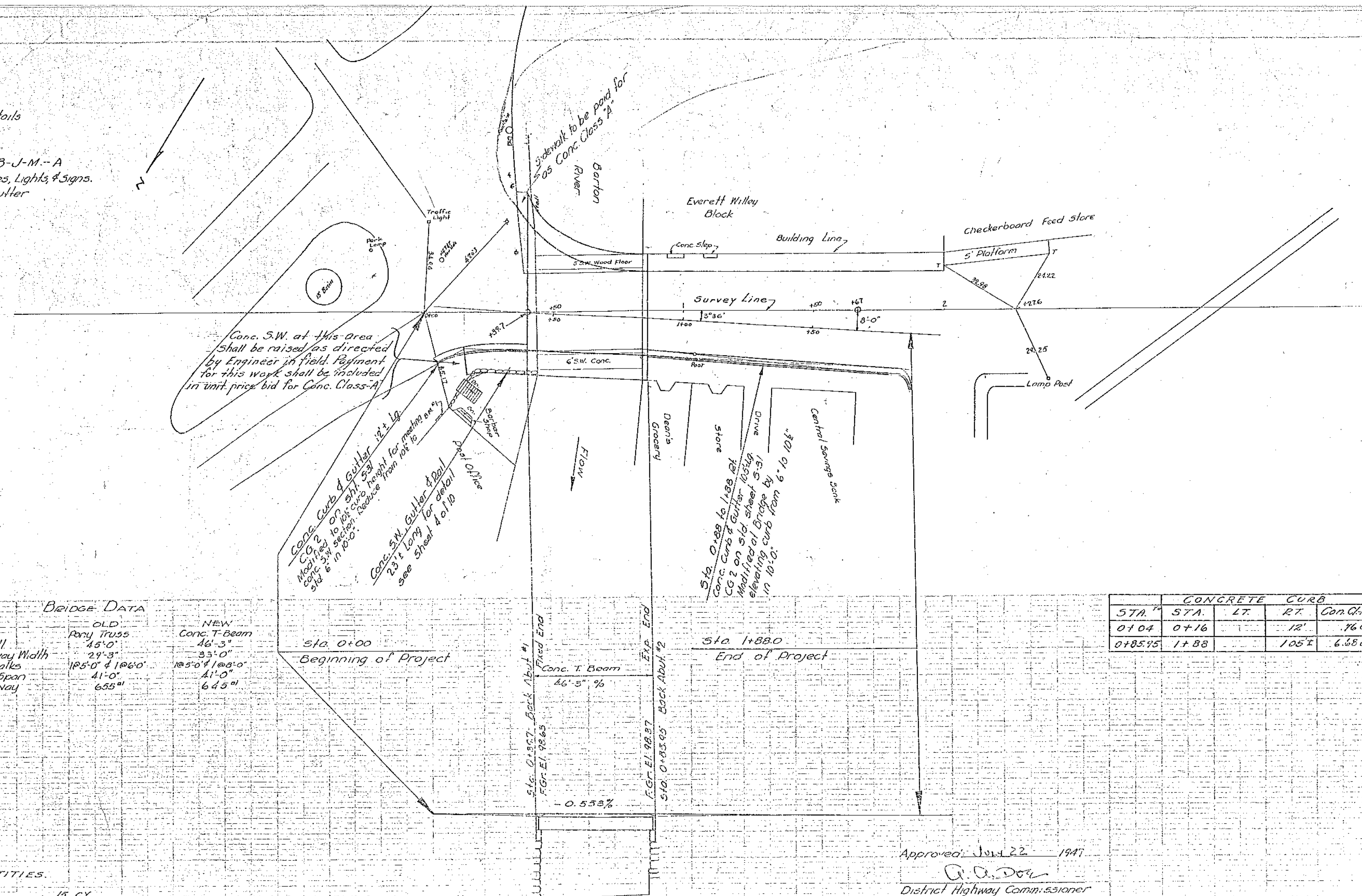
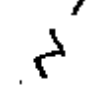


LIST OF SHEETS

- 1 Plan & Profile
- 2 Plan of Bridge
- 3 Section of Bridge & Details
- 4 Rail Post Spacing & Approach Rail Details
- 5 Details Abut #1
- 6 " " #2
- 7 Std. Structure Sheet 5B-20-Details B-J-M-A
- 8 " " " 5B-11-Barricades, Lights & Signs.
- 9 " " " 5-31-curb & gutter
- 10 Cross Sections

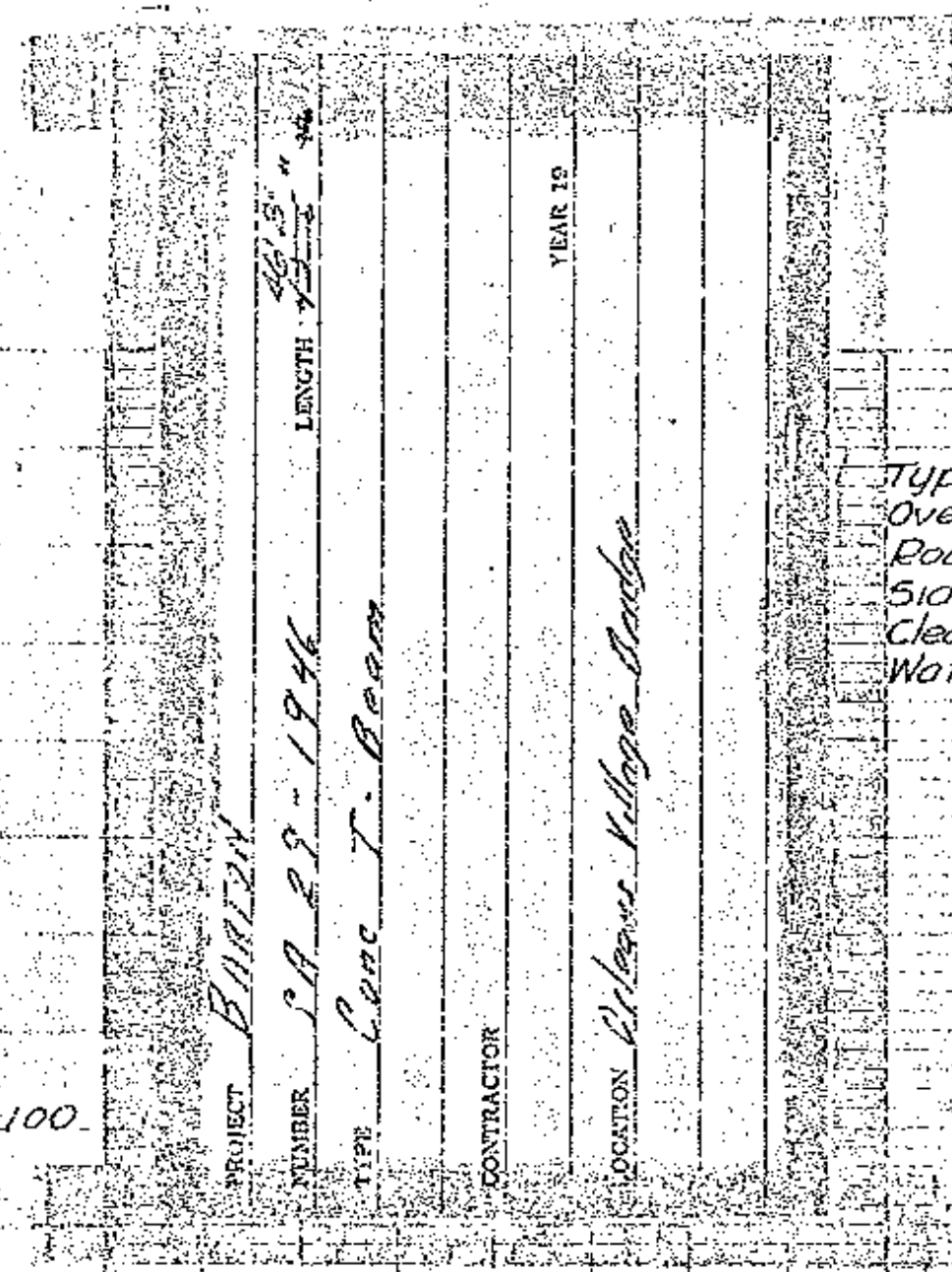


Conc. S.W. at this Area shall be raised as directed by Engineer in field. Payment for this work shall be included in unit price bid for Conc. Class-A

Conc. Curb & Gutter 12' x 12' on 2' x 2' curb. Height for machine work to be 10'-0\"/>

Conc. S.W. Gutter & Rail 23' Long for detail see sheet 4 of 10

5' x 0' 8\"/>



BRIDGE DATA

	OLD	NEW
Type	Rory Truss	Conc. T-Beam
Overall	45'-0"	46'-3"
Roadway Width	29'-3"	33'-0"
Sidewalks	18'-5" & 10'-0"	10'-5" & 10'-0"
Clear Span	41'-0"	41'-0"
Waterway	655 sq'	645 sq'

Sta 0+00
Beginning of Project

Sta 1+88.0
End of Project

CONCRETE CURB					
STA.	STA.	LT.	RT.	Con. Cl. A	Reinf. Steel
0+04	0+16		12'	76 cu	22 #
0+85.95	1+88		105'	6.65 cu	189 #

LIST OF QUANTITIES

Item	Description	Quantity
10	Solid Rock Excav.	15 CY
10-11	Common Excav. 1/2c. Borrow	25 CY
16	Structure Excav.	146 CY
18-8	Temp. Br. & Joint of Traffic	1 LS.
19c	Sub-base of Gravel	20 CY
25	Crushed Gravel Mixed in place Surface Course with Refined Tar	33 CY
30	Refined Tar	730 Gal.
41A	Concrete Class A	183 CY
41C	" " " C	42 CY
42	Reinf. Steel	37,730 Lbs.
43A	Structural Steel	3,550 Lbs.
57	Removal of Present Superstr.	1 LS.
94	Conduit for Lighting System	1 LS.

Approved: July 22 1947

A. A. Dore
District Highway Commissioner
Correct

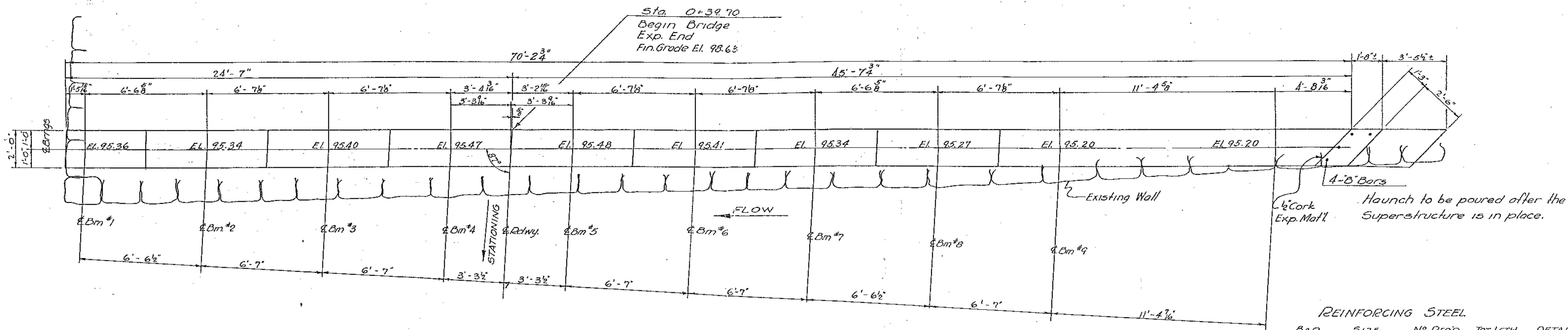
Bridge Engineer
Approved: 1947

Commissioner of Highways

BARTON
ORLEANS VILLAGE BRIDGE
S.A. 29-1946

Exp & Fixed Ends Reversed
7/23/48

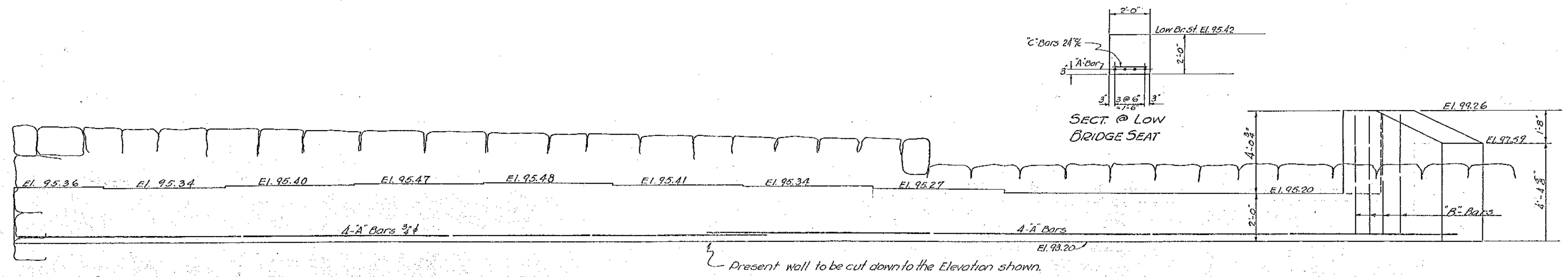
B.M. #1 Spot on step at Post Office. Elev 100.00



PLAN ABUT. #1

REINFORCING STEEL

BAR	SIZE	Nº REQ'D	TOT. LGTH.	DETAIL
A	3/4"	8	38'-1"	straight
B	3/8"	4	6'-0"	"
C	1/2"	36	1'-8"	"

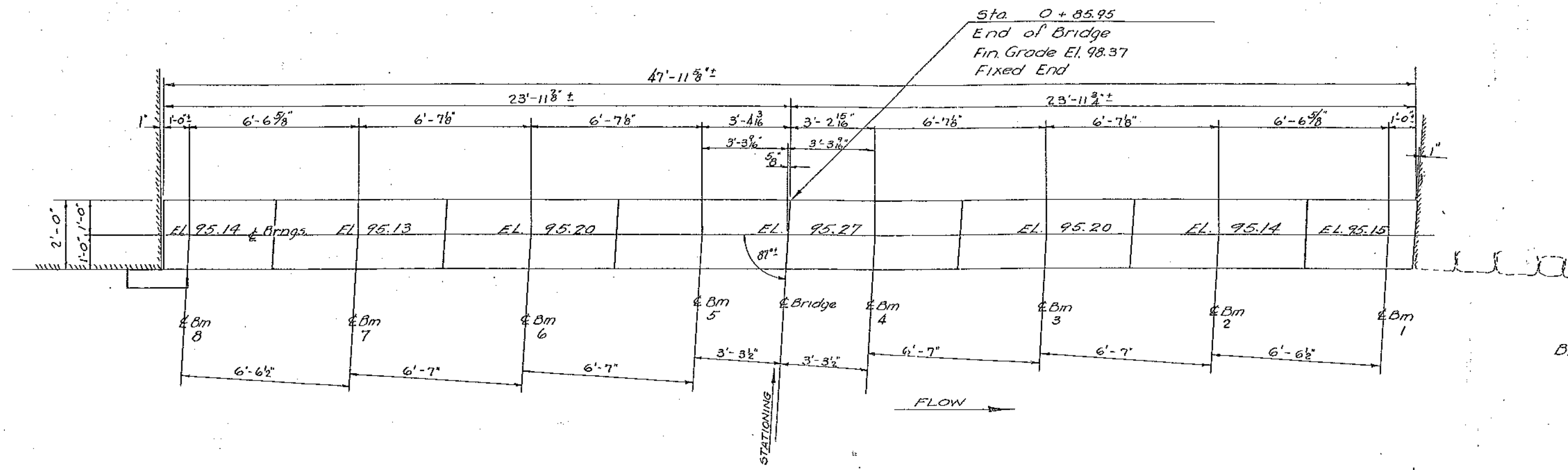


ELEV. ABUT. #1

BARTON
ORLEANS VILLAGE BRIDGE
DETAILS ABUT. #1
scale: 3/8" = 1'-0"

ESTIMATED QUANTITIES	
Concrete Class-A-	13 cy
Reinf. Steel-	546 lbs
Structure Excav.-	56 cy

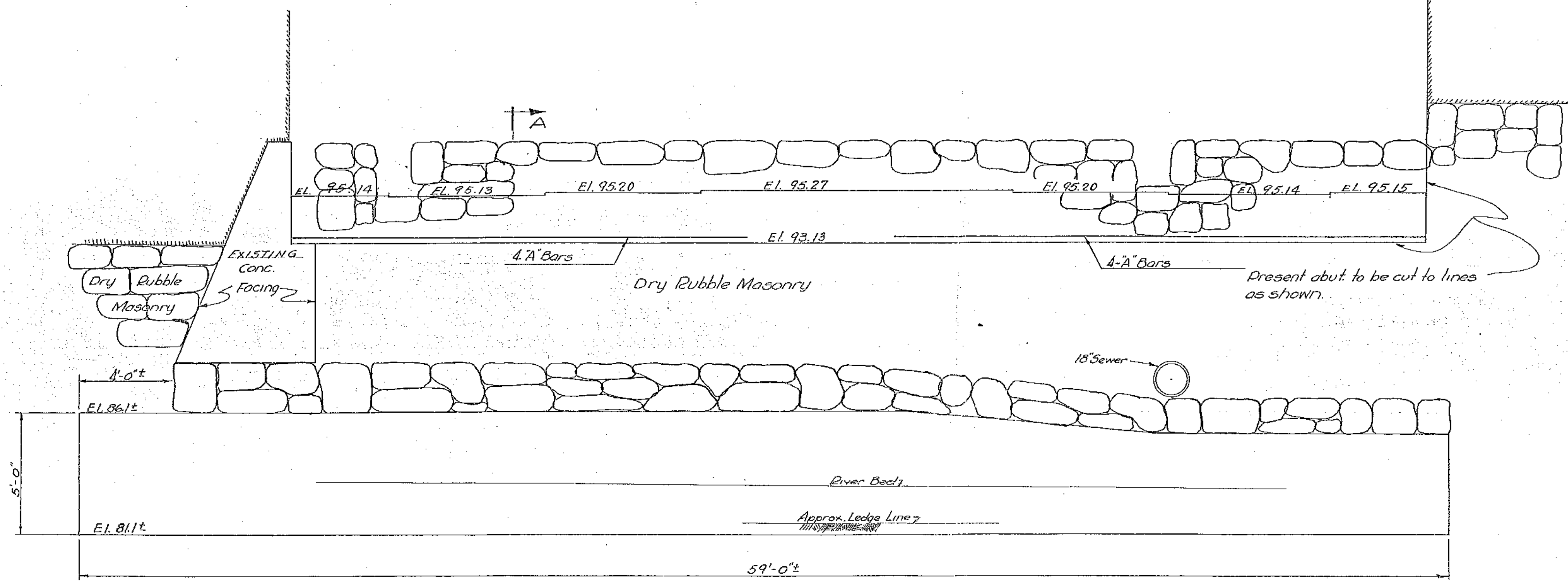
Surveyed by	L.M.B.
Designed by	L.M.B. 5/16/47
Drawn by	H.W.S.
Traced by	J. L. H. Except Quantities.
Checked by	No. 29(1946) Filed
Series S.A.	Sheet 5 of 10 Sheets



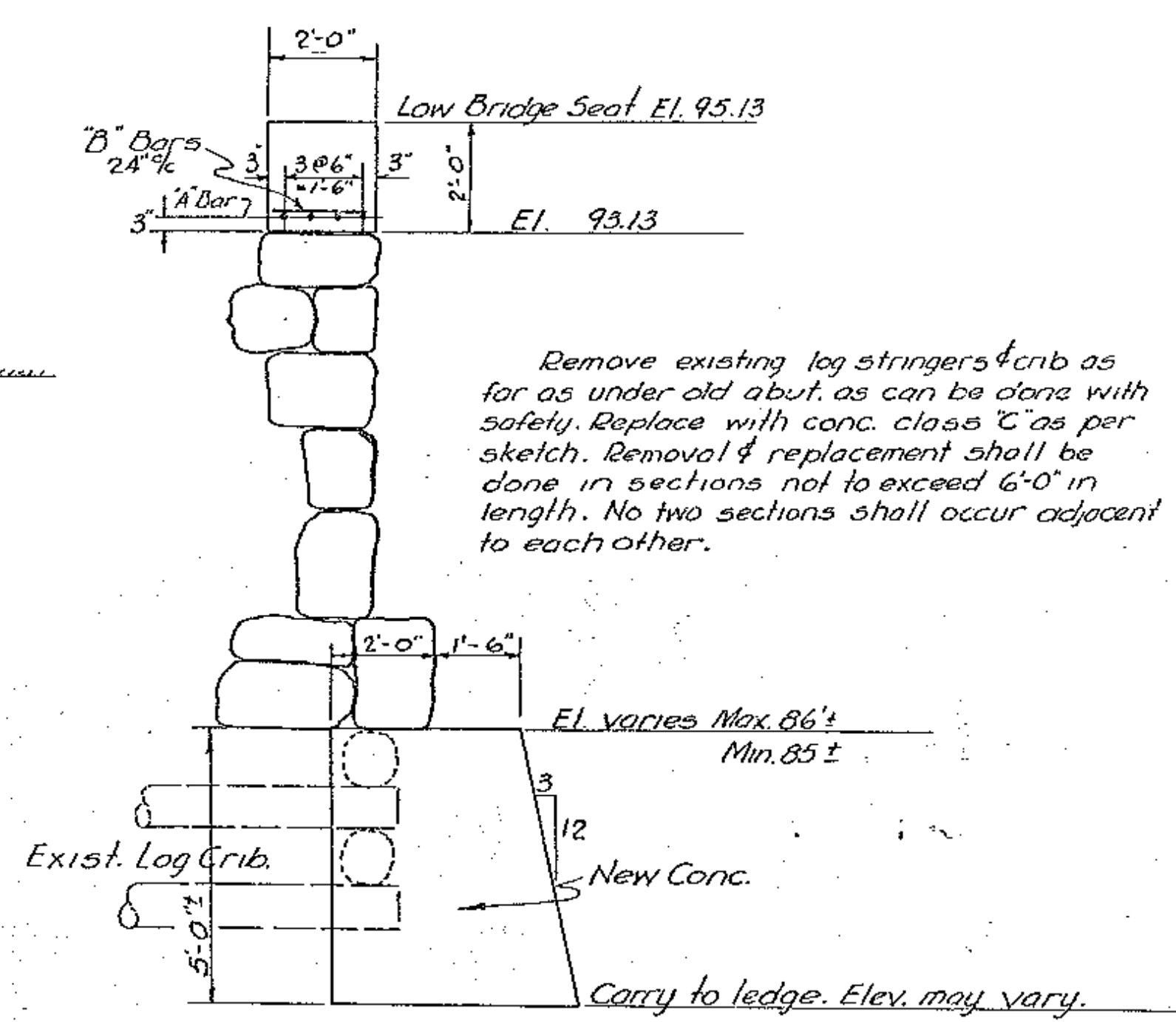
PLAN ABUT. #2

REINFORCING STEEL

BAR	No.	SIZE	TOT. LGTH.	DETAIL
A	8	3/4"	25'-0"	straight
B	25	1/2"	1'-8"	do



ELEV. ABUT. #2



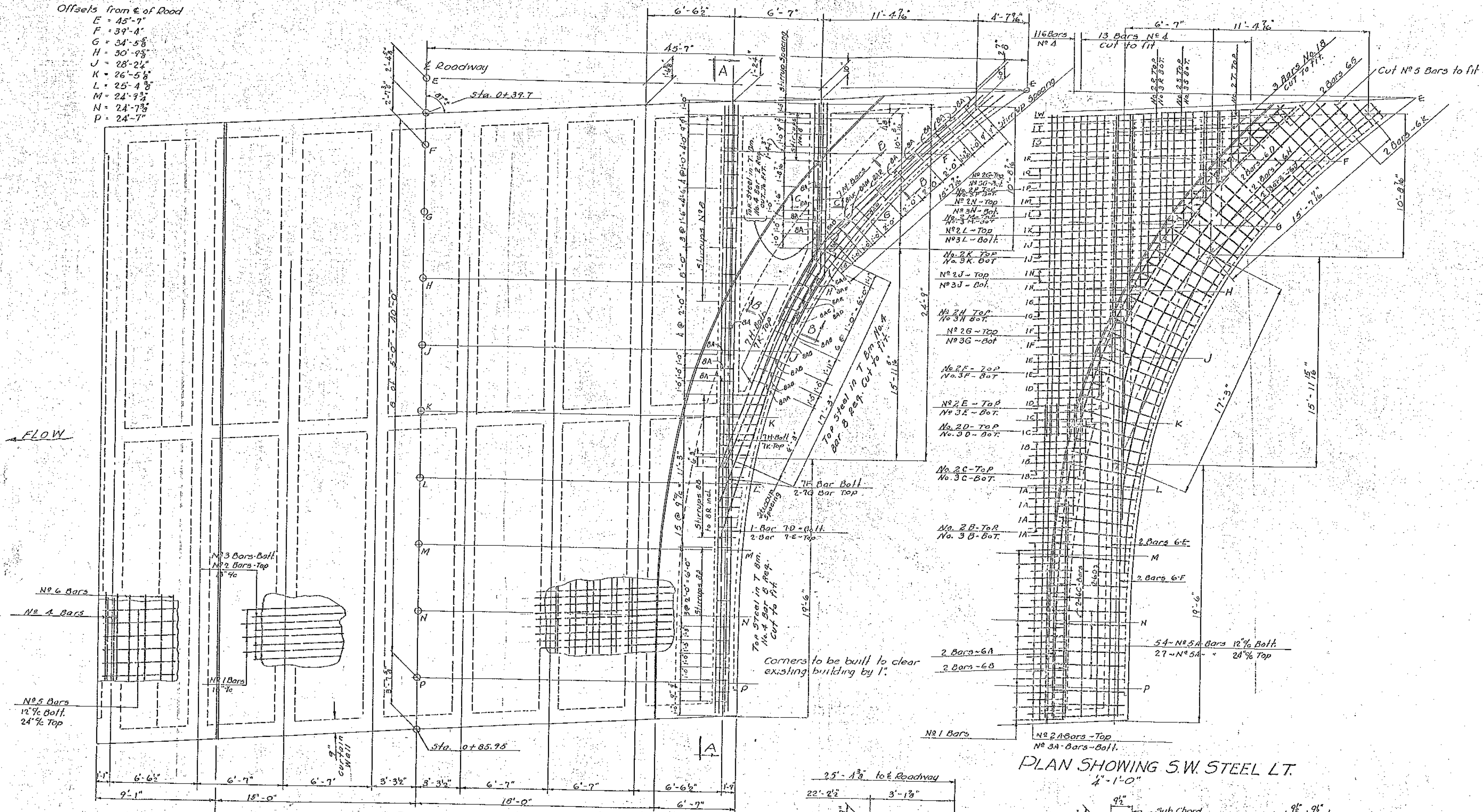
SECT. A-A
BARTON
ORLEANS VILLAGE BRIDGE
DETAILS ABUT. #2
scale: 3/8" = 1'-0"

ESTIMATED QUANTITIES

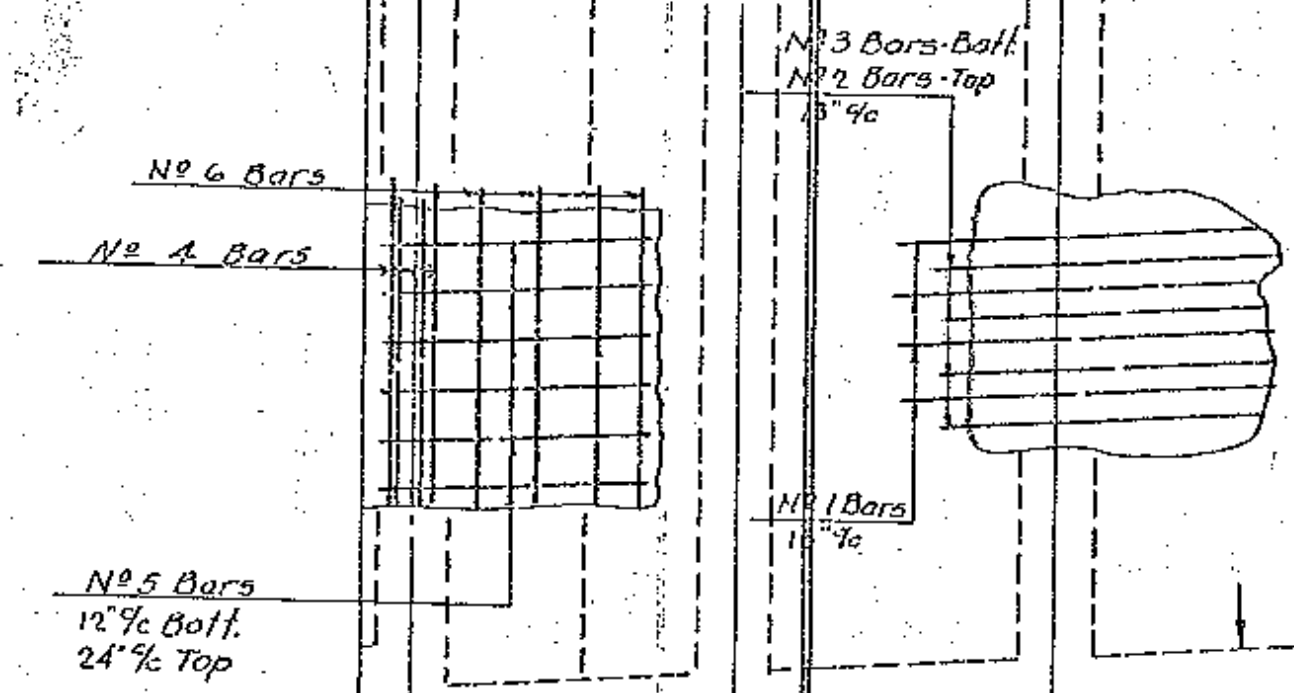
Conc. Class - A	8 c.y.
" " C	42 c.y.
Reinforcing Steel	328 lbs.
Struct. Excav.	85 c.y.

Surveyed by
Designed by L.M.B.
Drawn by L.M.B. 5/19/47
Traced by H.W.S.
Checked by J.L.H. EXCEPT QUANTITIES
Series SA No. 29-1946 Filed
Sheet 6 of 10 Sheets

Offsets from C of Road
 E = 45'-7"
 F = 39'-4"
 G = 34'-5 1/2"
 H = 30'-9 1/2"
 J = 28'-2 1/2"
 K = 26'-5 1/2"
 L = 25'-4 1/2"
 M = 24'-9 1/2"
 N = 24'-7 1/2"
 P = 24'-7"



FLOW



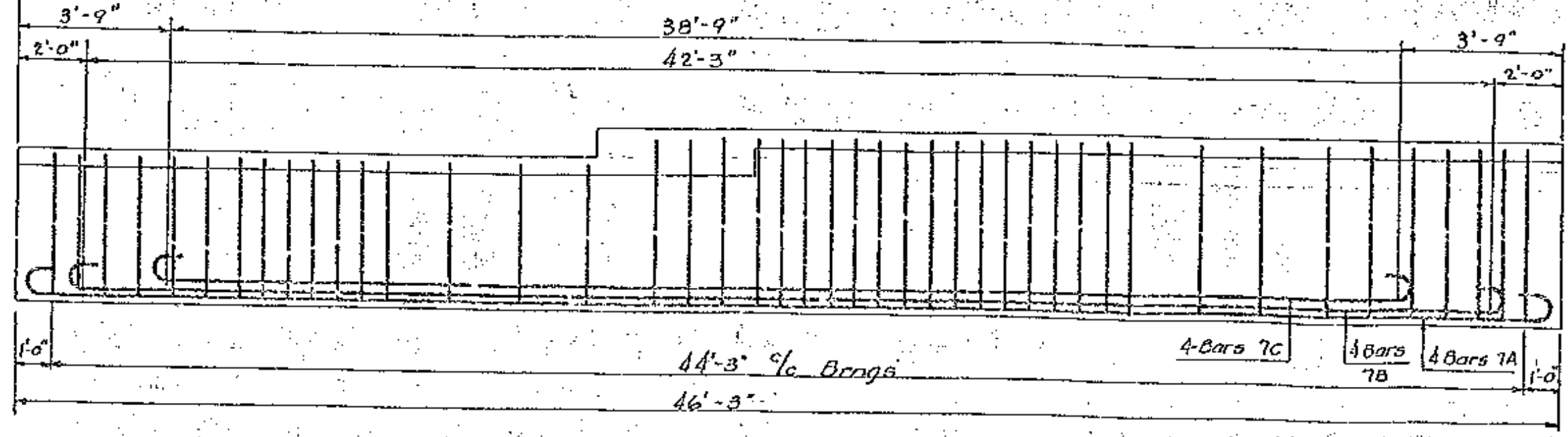
No. 5 Bars
12% Bot.
24% Top

No. 3 Bars-Bot.
No. 2 Bars-Top
5% 4%

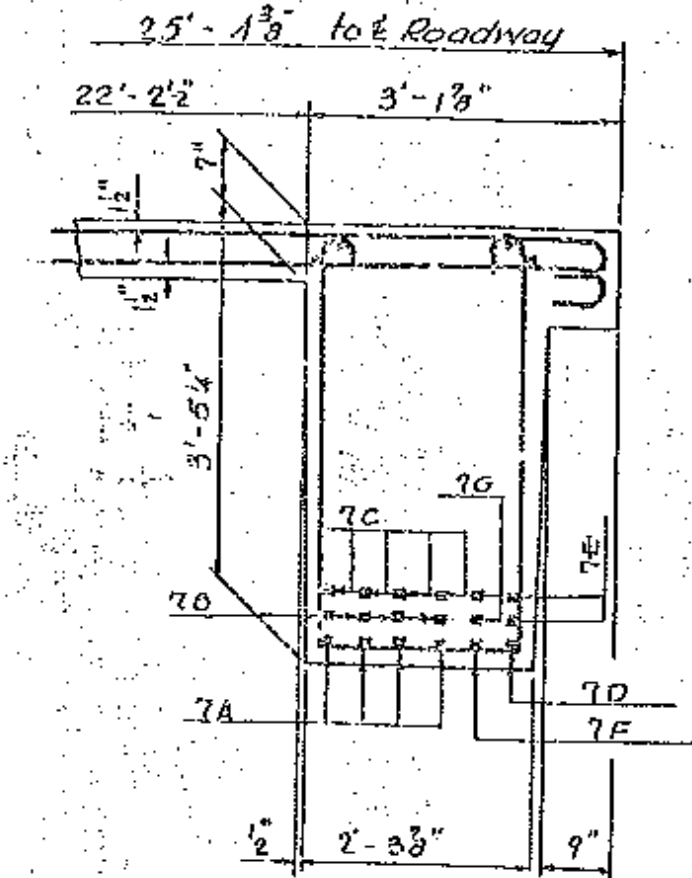
No. 1 Bars
11% 7%

PLAN
4'-1'-0"

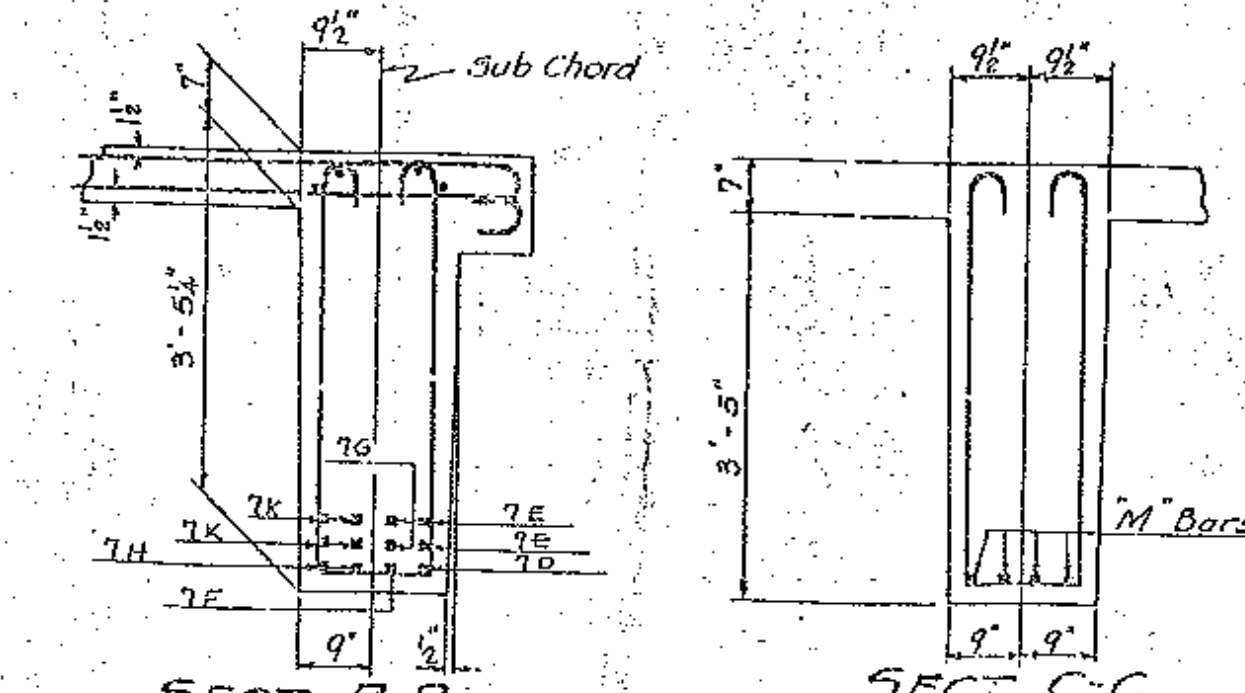
PLAN SHOWING S.W. STEEL LT.
4'-1'-0"



SECT. A-A
4'-1'-0"



SECTION AT L-L
2'-1'-0"



SECT. B-B
2'-1'-0"

SECT. C-C
2'-1'-0"

ESTIMATED QUANTITIES

BARTON
 ORLEANS VILLAGE BRIDGE
 S.A. 29-1946
 scale as noted

Surveyed by A. HUNT
 Designed by L.M.B.
 Drawn by L.M.B. 5-15-47
 Traced by H.W.S.
 Checked by
 Series 5A No. 29 (1946) Filed
 Sheet 2 of 10 Sheets