

FED. ROAD DIST. NO.	STATE	FED. AID PROJ. NO.	FEDERAL FISCAL YEAR	SHEET NO.	TOTAL SHEETS
9	VT.	103 B	1936	1	15

INDEX OF SHEETS

- SHEET NO. 1 TITLE PAGE
- " 2 TYPICAL CROSS-SECTION OF IMPROVEMENT { 2 1/2" Gravel Mixed in Place
- " " 3 Section of Underdrain Table Surface Course with Filter for Items 2, 3 & 4
- 4-1-15 Plan & Profile
- 1" Guard Rail & Guide Posts (S-30)
- 15 Barricades, Lights & Signs (S-70)

Standard Sheet S-30 Approved by the Chief Engineer on Aug. 15 1935

STATE OF VERMONT
STATE HIGHWAY DEPARTMENT

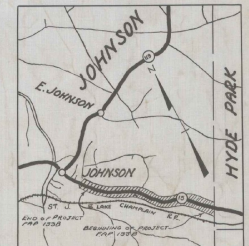
PLAN AND PROFILE OF PROPOSED
STATE HIGHWAY

FEDERAL AID PROJECT

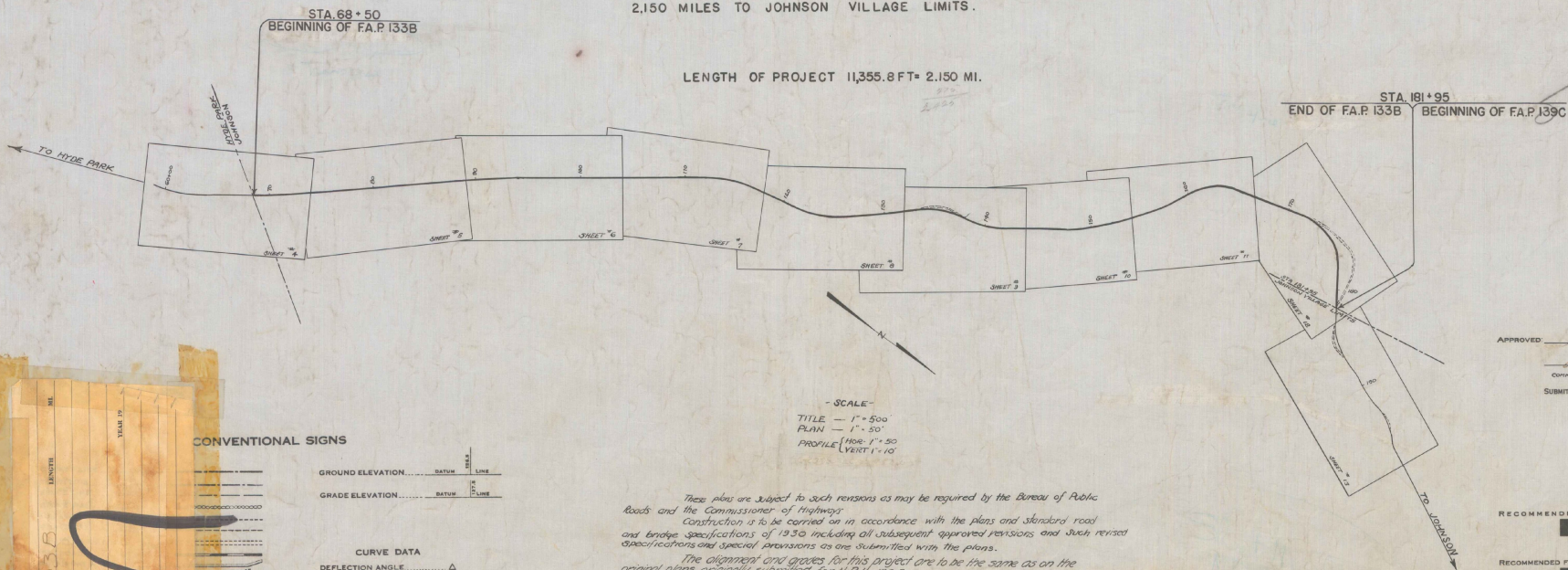
TOWN OF JOHNSON

HYDE PARK- JOHNSON ROAD

FROM THE HYDE PARK- JOHNSON TOWN LINE WESTERLY,
2.150 MILES TO JOHNSON VILLAGE LIMITS.

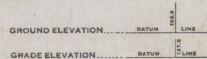


SCALE: 1" = 1 MILE



APPROVED: *[Signature]*
COMMISSIONER OF HIGHWAYS
SUBMITTED BY ORDER OF THE STATE HIGHWAY BOARD

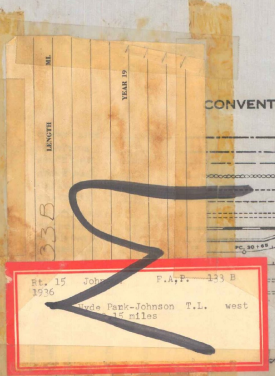
CONVENTIONAL SIGNS



- CURVE DATA
- DEFLECTION ANGLE..... Δ
 - DEGREE OF CURVE..... D
 - RADIUS OF CURVE..... R
 - TANGENT DISTANCE..... T
 - LENGTH OF CURVE..... L
 - EXTERNAL DISTANCE..... E
 - POINT OF INTERSECTION..... P. I.
 - POINT OF CURVE..... P. C.
 - POINT OF TANGENT..... P. T.
 - POINT ON TANGENT..... P. O. T.

SCALE
TITLE - 1" = 500'
PLAN - 1" = 50'
PROFILE - VERT. 1" = 10'

These plans are subject to such revisions as may be required by the Bureau of Public Roads and the Commissioner of Highways. Construction is to be carried on in accordance with the plans and standard road and bridge specifications of 1930 including all subsequent approved revisions and such revised specifications and special provisions as are submitted with the plans. The alignment and grades for this project are to be the same as on the original plans, originally submitted for N.R. 133-B.



Sta. 15 Johnson P.A.P. 133 B
Hyde Park-Johnson T.I. west
15 miles

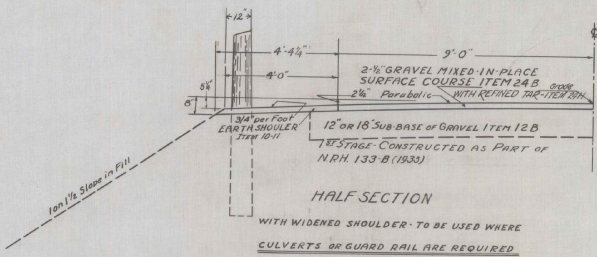
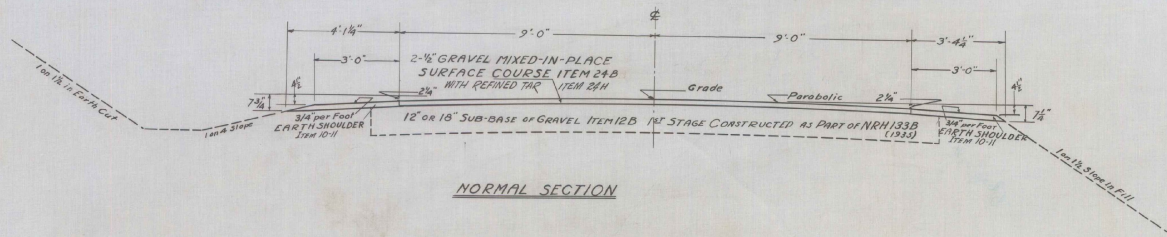
CORRECT: *[Signature]*
ROAD ENGINEER

RECOMMENDED: [Redacted]
DISTRICT ENGINEER BUREAU OF PUBLIC ROADS
RECOMMENDED FOR APPROVAL: [Redacted]
CHIEF ENGINEER BUREAU OF PUBLIC ROADS
APPROVED: [Redacted]
DIRECTOR - BUREAU OF PUBLIC ROADS

SERIES F.A.P. NO. 133-B FILED
SHEET 1 OF 15

TYPICAL SECTIONS

2-1/2" GRAVEL MIXED-IN-PLACE SURFACE COURSE WITH REFINED TAR · ITEMS 24B & 24H



NOTE:
Post, Cable & Fittings of any Guard Rail now in place on the job is to become the property of the State. The same shall be removed and carefully piled or stored at such locations as are designated by the Engineer.

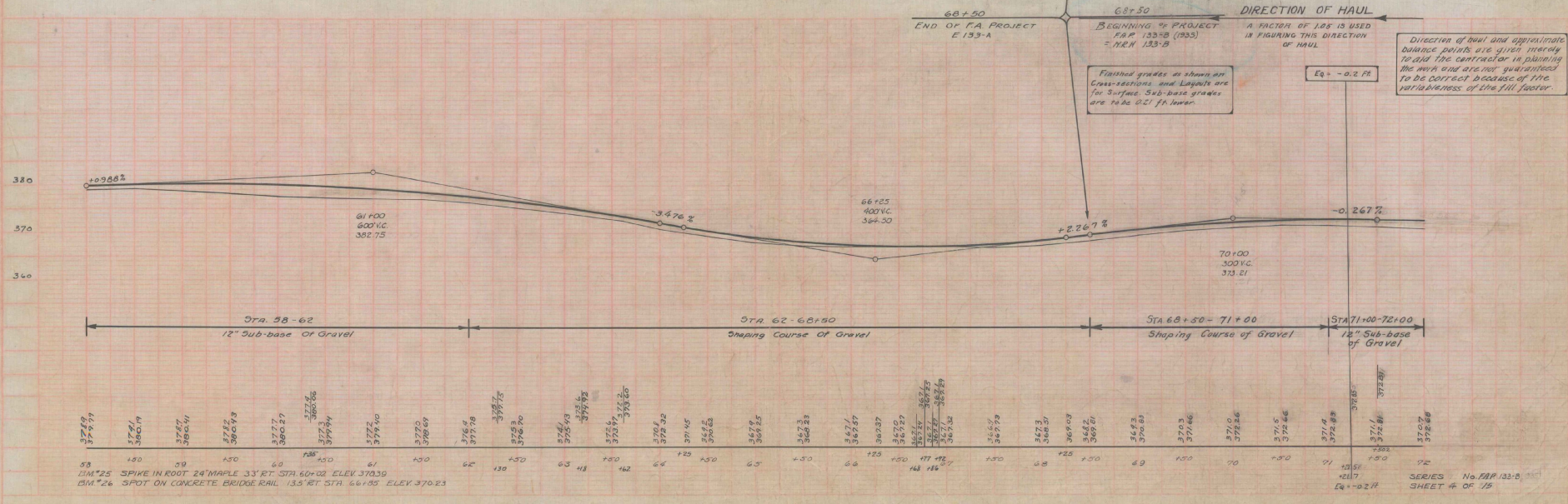
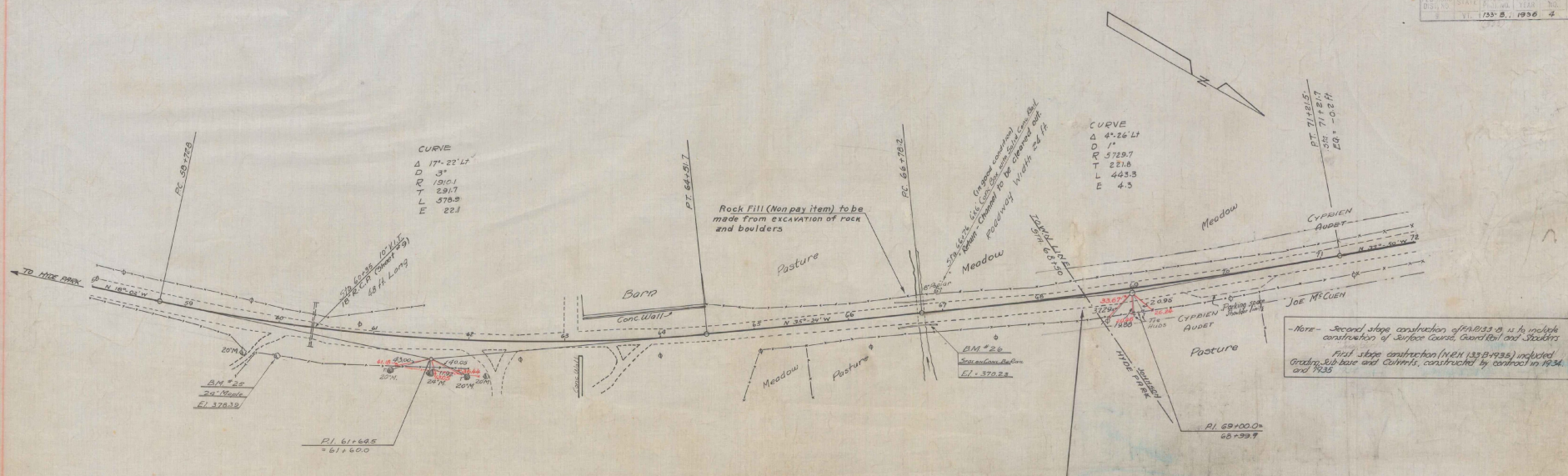
NOTE:
Tack coat applied as part of First Stage construction on N.E.H. project 133-B

NOTE - CLEANING TACK COAT
The contractor will be required to clean off all loose gravel, sand, or other foreign material from the tack coat prior to the construction of the surface course. This work is to be included in the bid price for Surface Course, Item, 24-B&H.

ESTIMATED QUANTITIES

END AREAS - Square Feet			
Width	18'	20'	21'
2 1/2" SURFACE COURSE	3.75	4.17	4.38

Surveyed by PUTNAM
Designed by AURUNNALS
Drawn by Harcourt
Checked by J. J. Flanagan
Series R.A.P. No. 133-B Filed
Sheet 2. of 15 Sheets



Direction of haul and approximate distance points are given merely to aid the contractor in planning the work and are not guaranteed to be correct because of the variability of the fill factor.

Finished grades as shown on Cross-sections and Layouts are for Surface Sub-base grades are to be set by owner.

A FRACTION OF 1/8 IS USED IN FIGURING THIS DIRECTION OF HAUL

END OF FA PROJECT E 133-A

BEGINNING OF PROJECT F&P 133-B (1935) - N&N 133-B

E₀ = -0.2 FA

WINDY PLANT

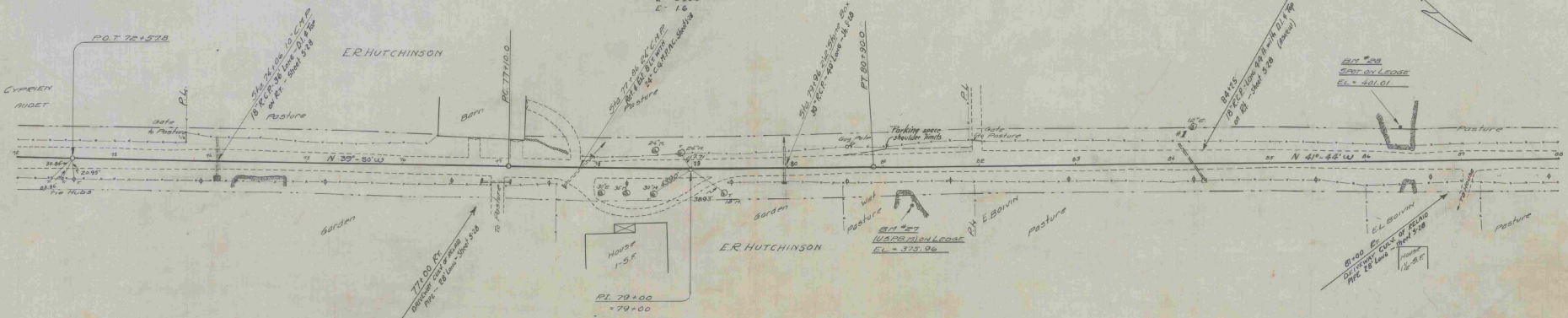
WINDY SOCIETY

FAP 133-B		
STATION	LT	RT
71+56	2.5	
72+26	4.0	

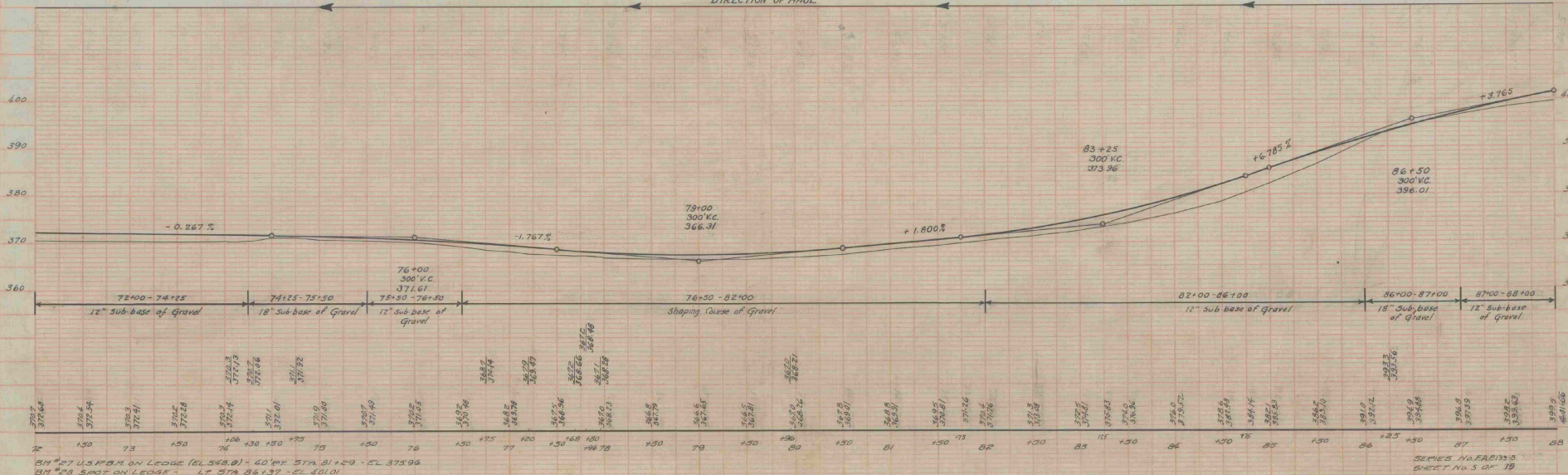
FAP 133-B		
STATION	LT	RT
74+06	1	1
77+56	1	1
79+26	1	1
81+12	1	1

CURVE
 $\Delta = 1^\circ 54' 47''$
 $D = 0^\circ 30'$
 $R = 11,538.2$
 $T = 130.0$
 $L = 380.0$
 $E = 16$

FILE NO.	STATE	FEED AID	DATE SURVEYED	SHEET NO.	TOTAL SHEETS
133-B	VT	185-B	1936	3	18



Parcel Kind	Date of Instrument	Grantor	Grantee	Recorded	Remarks
Col. #1 G.C.D.	R-14-35	Eleazar Epile Bovin	St. of Vt.	Book 30 Page 430	Date 4-6-35

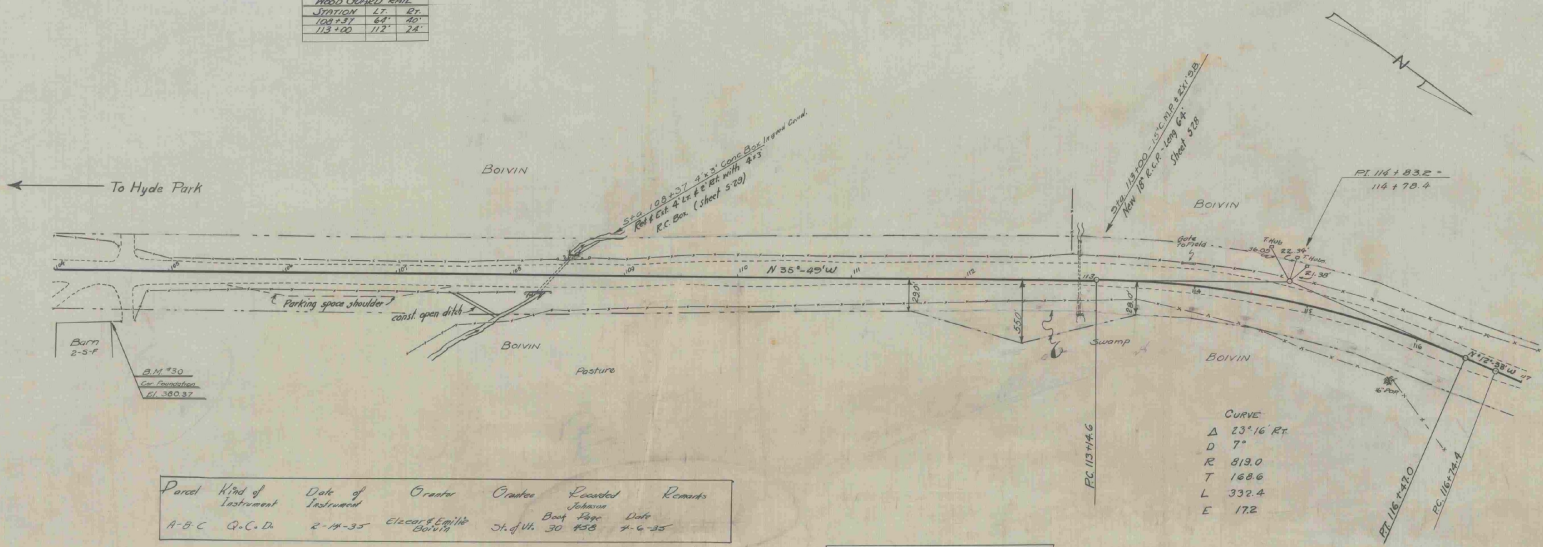


BM #27 US B.M. ON LEADE (E.L. 568.8) - 40' W. STA. 81+20 - E.L. 375.06
 BM #28 3" x 3" ON LEADE - LT STA. 86+37 - E.L. 401.01

SERIES NO. FAP 133-B
 SHEET NO. 3 OF 18

F.A.P. 133-B
 Wood Cutover Road

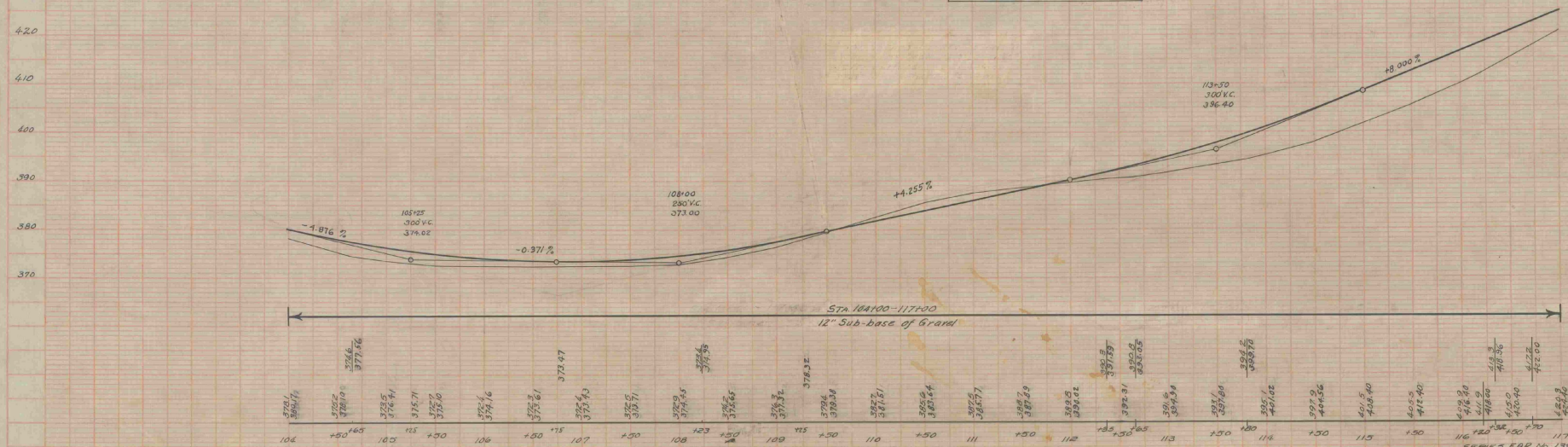
SECTION	LT.	RT.
101+57	64'	65'
113+00	112'	74'



Parcel	Kind of Instrument	Date of Instrument	Orator	Orator	Recorder	Remarks
A-B-C	C.C.D.	2-14-35	Edward Smith	Ch. of H.	30 1930	7-6-35

DIRECTION OF HAUL

STA 108+00 TO 113+00
 Excavation 1700 cu. yd approx

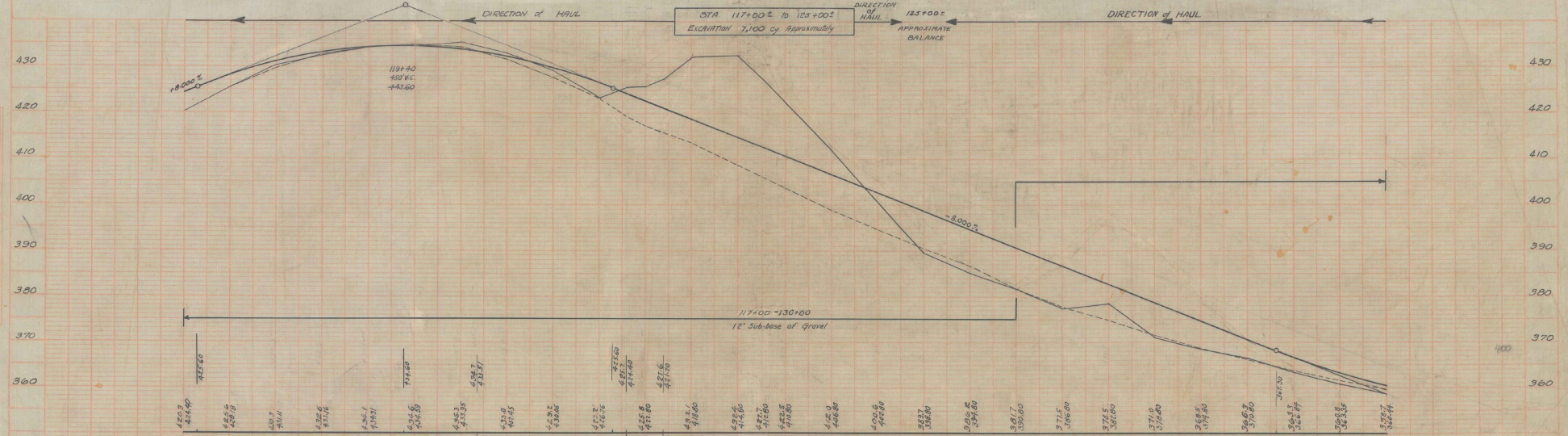
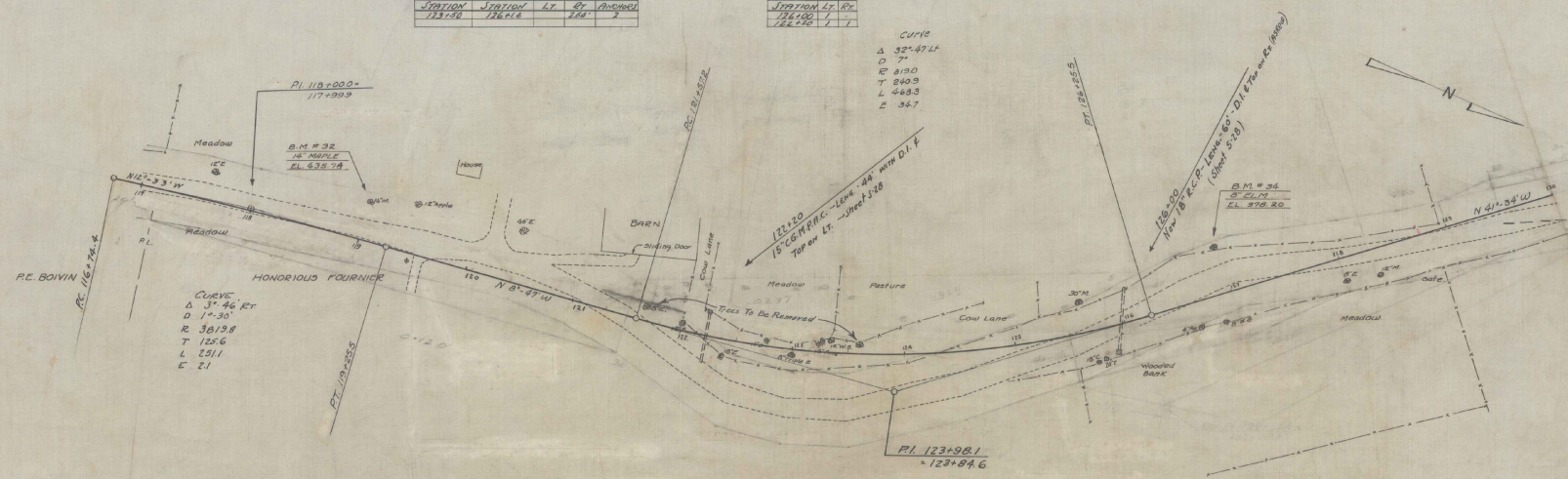


N.M. 30 SPOT ON BARN FOUNDATION 44 FT. RT. STA. 104+50 ELEV. 380.37
 B.M. 31 NOT LOCATED

FAR 133-B		
CABLE CUMUL RAIL		
STATION	STATION	LT. BY ANCHOR
123+50	126+12	2

FAR 133-B		
CUMUL RAIL		
STATION	STATION	LT. BY ANCHOR
126+20	128+20	1

CURVE
 Δ 32° 47' 41"
 D 7'
 E 810.0
 T 240.3
 L 468.3
 E 36.7



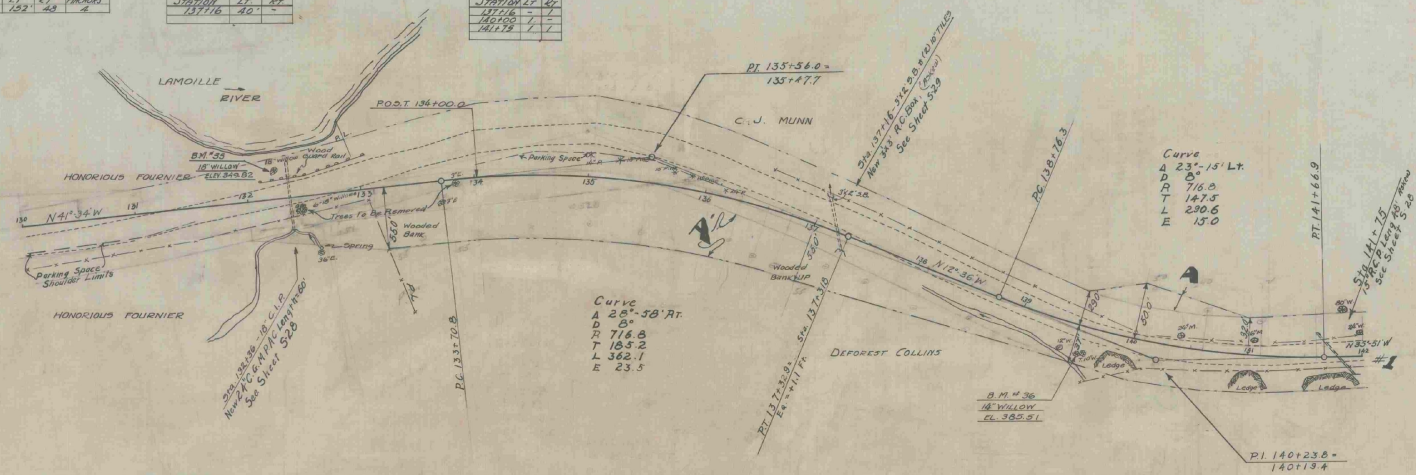
D.M. # 32 - SPIKE IN TRUNK 1 1/2" MAPLE - 27" LT DIA 118102 - ELEV. 435.74
 D.M. # 34 - - ROOT 8" CLM - 42" - 126185 - CLKX 378.20
 B.M. # 33 - - TRUNK 8" W. 8" DIA. NOT LACED ELEV. 410.44

F.A.D. 133B			
CABLE GRAD RAIL			
STATION	132+36	152	PT. ANDROL 2

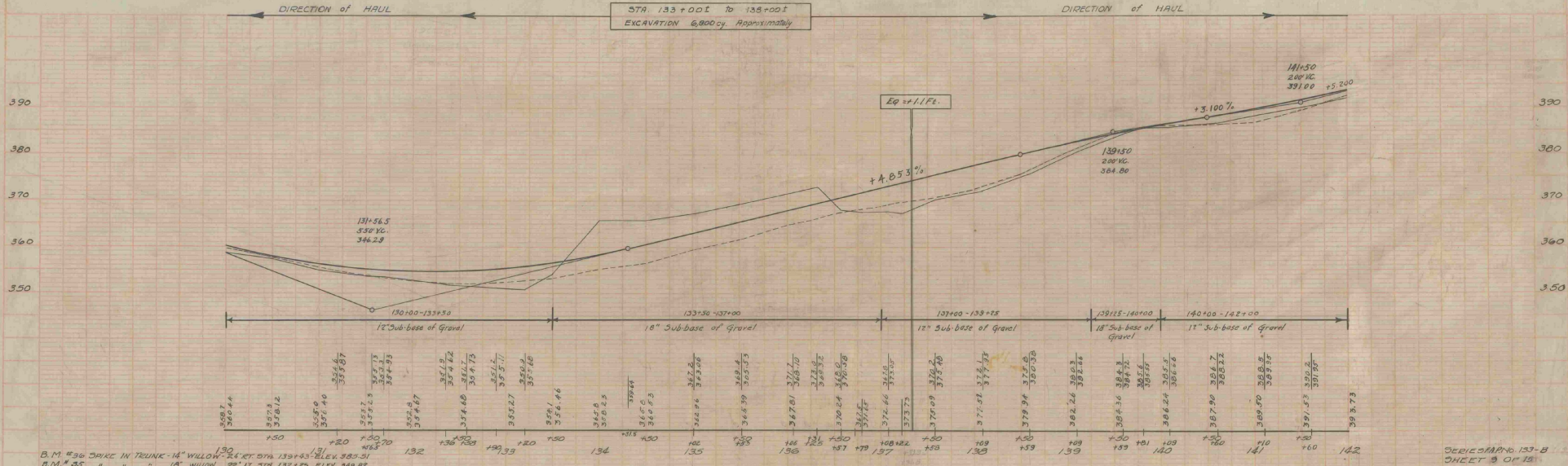
F.A.D. 133B			
WOOD GUARD RAIL			
STATION	137+16	40	

F.A.D. 133B			
GUIDE RAIL			
STATION	142	40	
147+16			
152+16			
161+16			
161+16			

PL. ROAD	STATE	Feet and	INCHES	FRAC.
133-B	VT	133-B	1936	5 13



Parcel	Kind of Instrument	Date	Grantor	Grantee	Recorded	Remarks
A-B-C	G.C.D.	12-11-34	Carroll Munn	Johnson	12-20-34	See Sheet 132-B
A	W.D.	12-11-34	Deforest C. Collins	Johnson	12-20-34	See Sheet 132-B



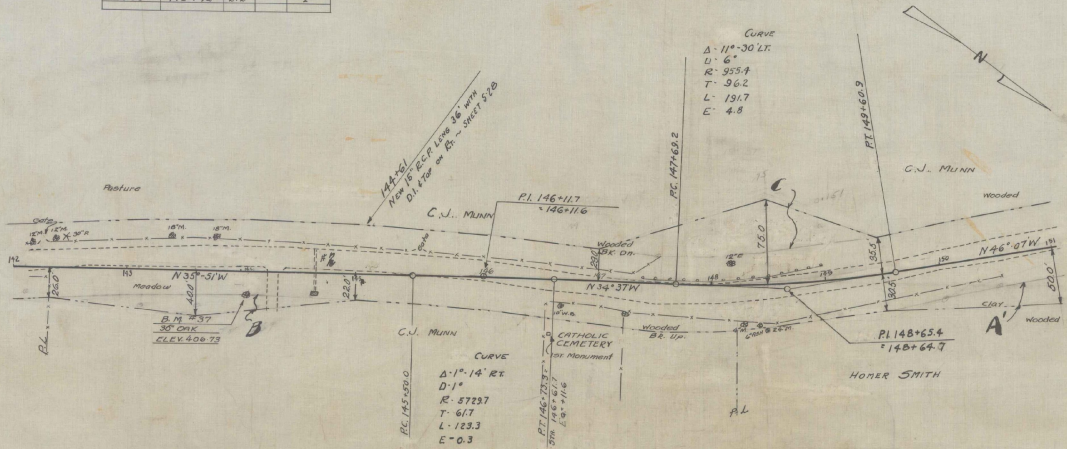
B.M. #36 SPIKE IN TRUNK-14" WILLOW 24 FT. STA. 130+43 ELEV. 385.51
 B.M. #35 " " " " 10" WILLOW 22 FT. STA. 132+25 ELEV. 346.29

SEE SHEET 132-B
 SHEET 5 OF 10

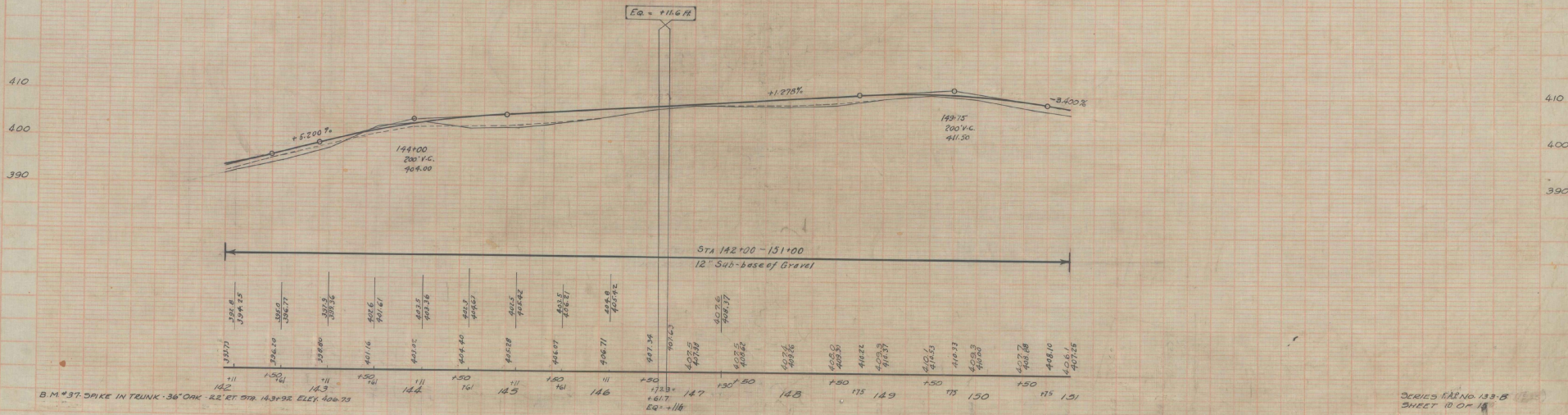
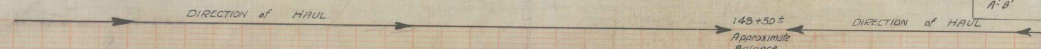
F.A.P. 133-B
CABLE GUARD RAIL

STATION	TO STATION	LT	RT	AMOUNT
147+00	143+72	272		2

FED. ROAD DIST. NO.	STATE	FED. AID	FISCAL YEAR	SHEET NO.	TOTAL SHEETS
8	VT	133-B	1956	10	15



Parcel	Kind of Instrument	Date of Instrument	Grantor	Grantee	Recorded	Remarks
14-112	G.C.D.	12-11-34	Carroll Munn	St. of Vt.	437	12-20-34
14-113	W.D.	12-14-34	Carroll Munn	St. of Vt.	438	12-27-34

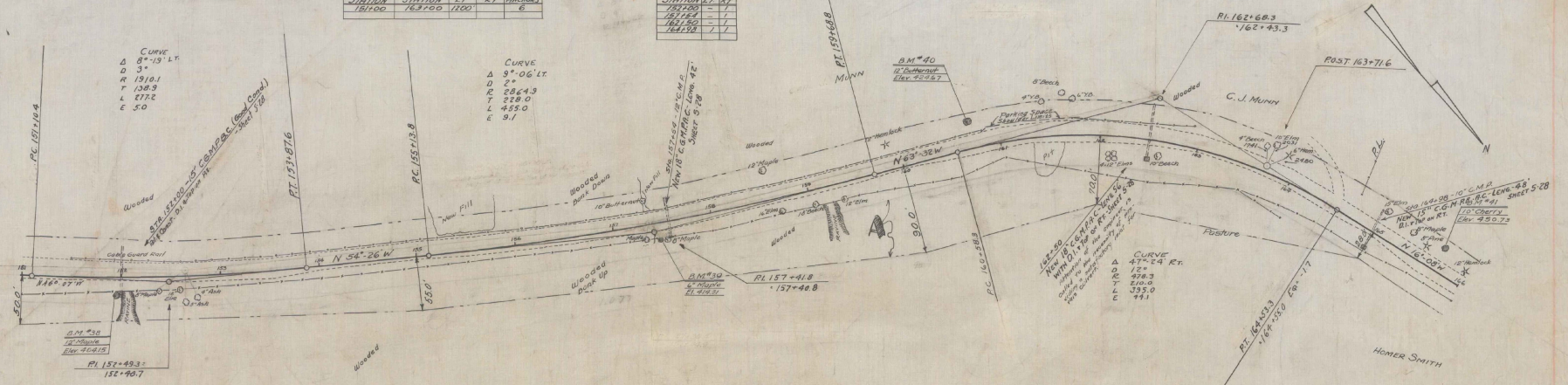


FAP 133-B

Cable Guard Rail			
STATION	STATION	LT	RT
163+00	163+00	1100	6

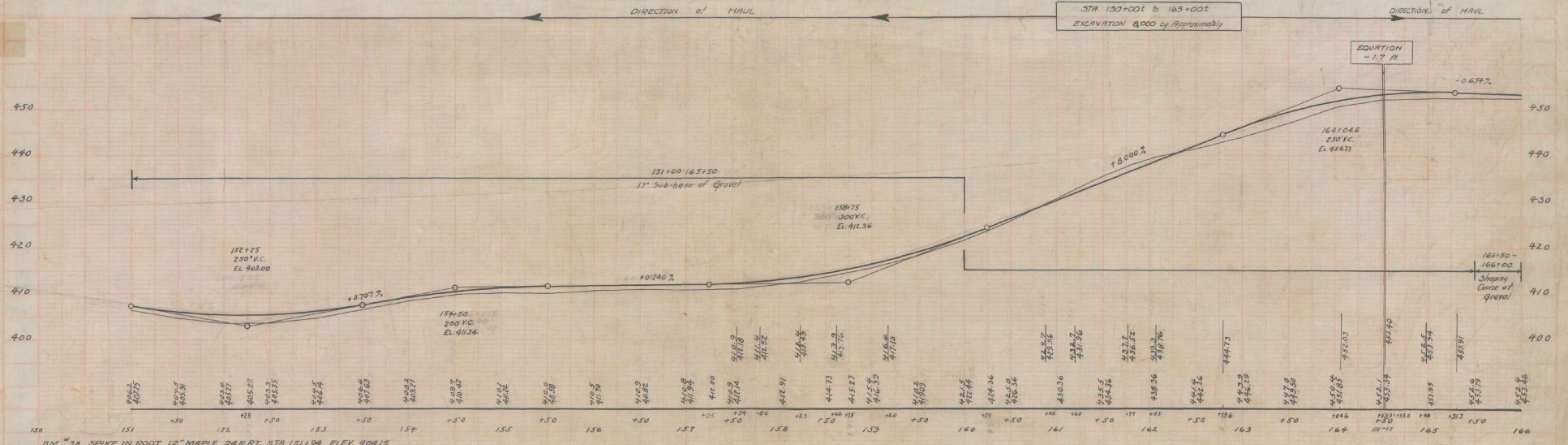
FAP 133-B

Guide Posts	
STATION	LT
163+00	-
163+10	-
163+20	-
163+30	-



Partial list of Date of Grantor Grantee Recorded Easements
 Instrument
 11-B W.D. 12-24-34. Power of Attorney Sta. 161.31 to 162.12-34

STA 160+00 to 165+00
 EXCAVATION 8,000 cu Approx.



- B.M. #38 SPIKE IN ROOT 12" MAPLE 248 FT. STA. 151+34 ELEV. 408.19
- B.M. #39 " TRUNK " " 306 FT. STA. 152+48 ELEV. 414.31
- B.M. #40 " ROOT 12" BUTTERNUT 171 FT. STA. 160+70 ELEV. 426.67
- B.M. #41 " 10" CHERRY 24 1/2 FT. STA. 165+69 ELEV. 450.73

FAP 133-B				
Cable Guard Rail				
STATION	1/2 STATION	LT	RT	ANCHOR
176+75	181+25	320	320	A

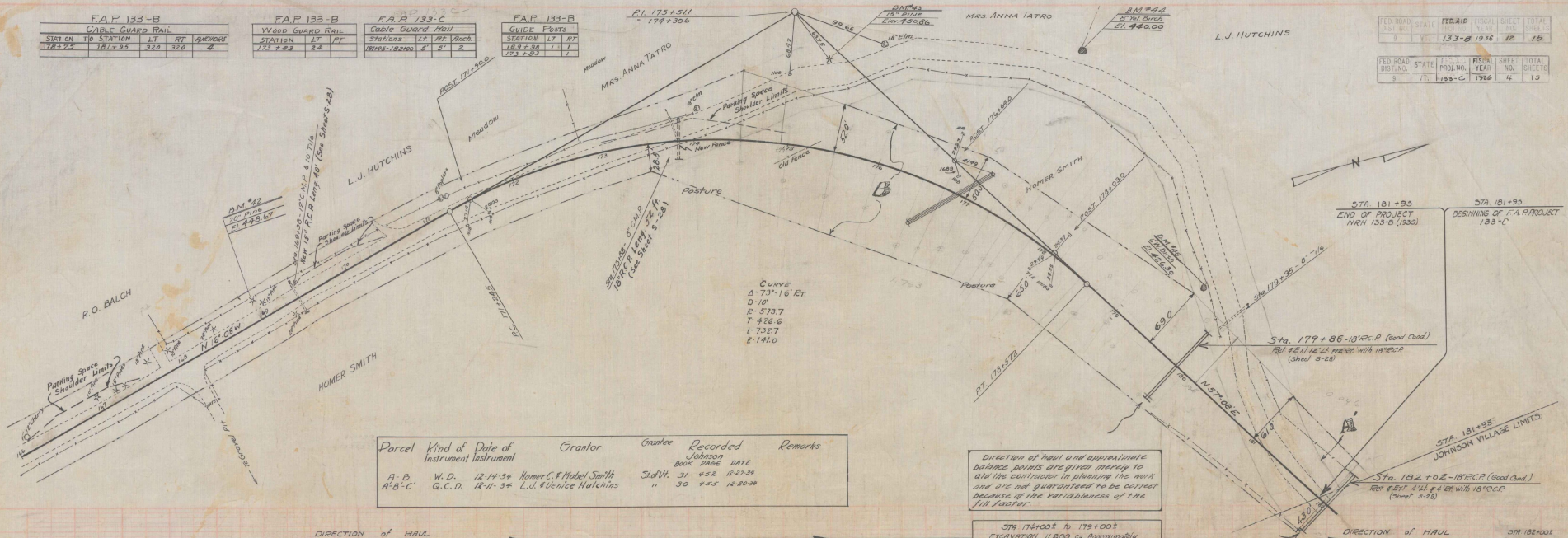
FAP 133-B				
Wood Guard Rail				
STATION	1/2 STATION	LT	RT	ANCHOR
174+25	22			

FAP 133-C				
Cable Guard Rail				
STATION	1/2 STATION	LT	RT	ANCHOR
18152-182100	5'	0'	2'	

FAP 133-B				
Guide Posts				
STATION	1/2 STATION	LT	RT	ANCHOR
183+36	1	1		
173+83				

FED. ROAD DIST. NO.	STATE	FED. AID DIST. NO.	FISCAL YEAR	SHEET NO.	TOTAL SHEETS
2	VT.	133-C	1936	12	15

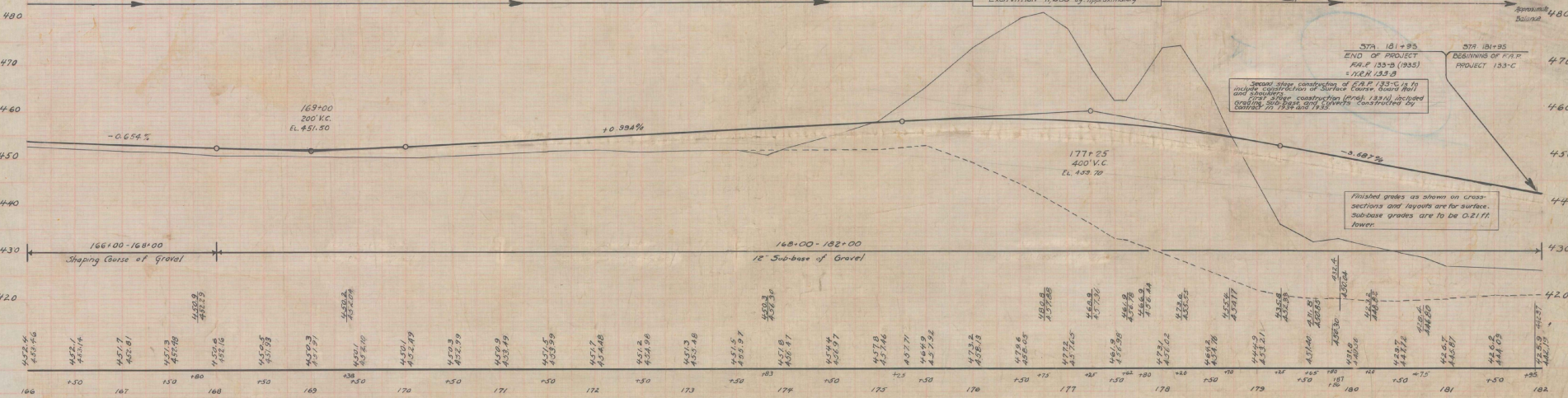
FED. ROAD DIST. NO.	STATE	FISCAL YEAR	SHEET NO.	TOTAL SHEETS	
2	VT.	133-C	1936	14	15



Parcel	Kind of Instrument	Date of Instrument	Grantor	Grantee	Recorded Book	Recorded Date	Remarks
A-B	W.D.	12-14-36	Homer C. & Madeline Smith	Johnston	31	452	12-29-36
A-B-C	G.C.D.	12-14-36	Lul. Venice Hutchins	Johnston	30	453	12-29-36

Direction of haul and approximate balance points are given merely to aid the contractor in planning the work and are not guaranteed to be correct because of the variability of the fill factor.

STA 176+00 to 179+00 EXCAVATION 11,800 cu. Approximately

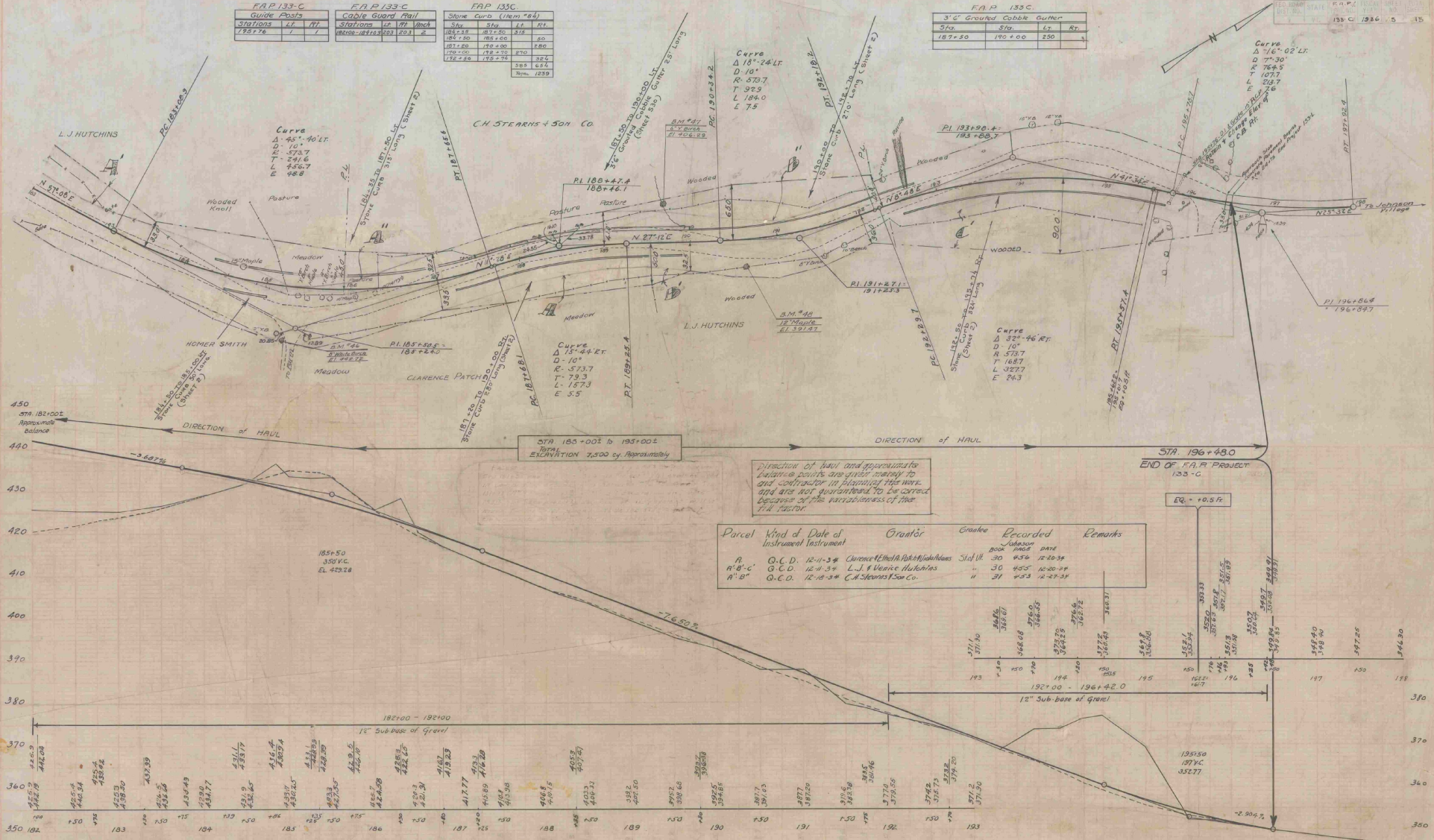


B.M. #42 SPIKE IN ROOT 20" PINE 24" R. LT. STA. 168+94 ELEV. 446.67
 B.M. #43 15" PINE 55" R. LT. 179+30 ELEV. 450.86
 B.M. #44 TRUNK 8" Y. BIRCH 185" R. LT. 177+30 ELEV. 440.00
 B.M. #45 ROOT 6" W. BIRCH 85" R. LT. 179+30 ELEV. 426.30

SERIES FAP No. 133-B
 SHEET 12 OF 15
 SHEET 12 OF 15

F.A.P. 133-C			F.A.P. 133-C			F.A.P. 133-C		
Guide Posts			Cable Guard Rail			Stone Curb (Item #4)		
Station	LT	RT	Station	LT	RT	Sta	Sta	Item #4
185+76	7	1	18108-18110	203	203	184+18	187+50	818
						184+20	185+00	820
						187+00	187+00	820
						190+00	187+70	870
						192+25	192+75	324
								388 624
								Total 1289

F.A.P. 133-C			
3' G. Grouted Cobble Cutter			
Sta	Sta	LT	RT
187+50	190+00	250	4



STA 185+00 to 195+00
TOTAL EXCAVATION 7,500 cy. Approximately

Direction of haul and approximate
elevation points are given merely to
aid contractor in planning the work
and are not guaranteed to be correct
because of the unevenness of the
F.A. section.

Parcel	Kind of	Date of	Grantor	Crafter	Recorded	Remarks
		Instrument			Job No.	DATE
A	O.C.D.	12-1-34	Clarence Elwell Park/Hutchins	Stall	30 436	12-20-34
B-C	O.C.D.	12-4-34	L.J. & Venice Hutchins		30 455	12-20-34
B-D	O.C.D.	12-10-34	C.H. Stearns & Son Co.		11 31	4-23-35

BM #46 SPIKE IN ROOT 8 INCH WHITE BIRCH TO B.R. STA 185+23 ELEV 442.72
 BM #47 6 YELLOW 42.6 LT STA 189+80 ELEV 406.39
 390 BM #48 12 MAPLE 42.6 RT STA 190+61 ELEV 391.87

1936

Johnson
F.A.P. 133-B

1936