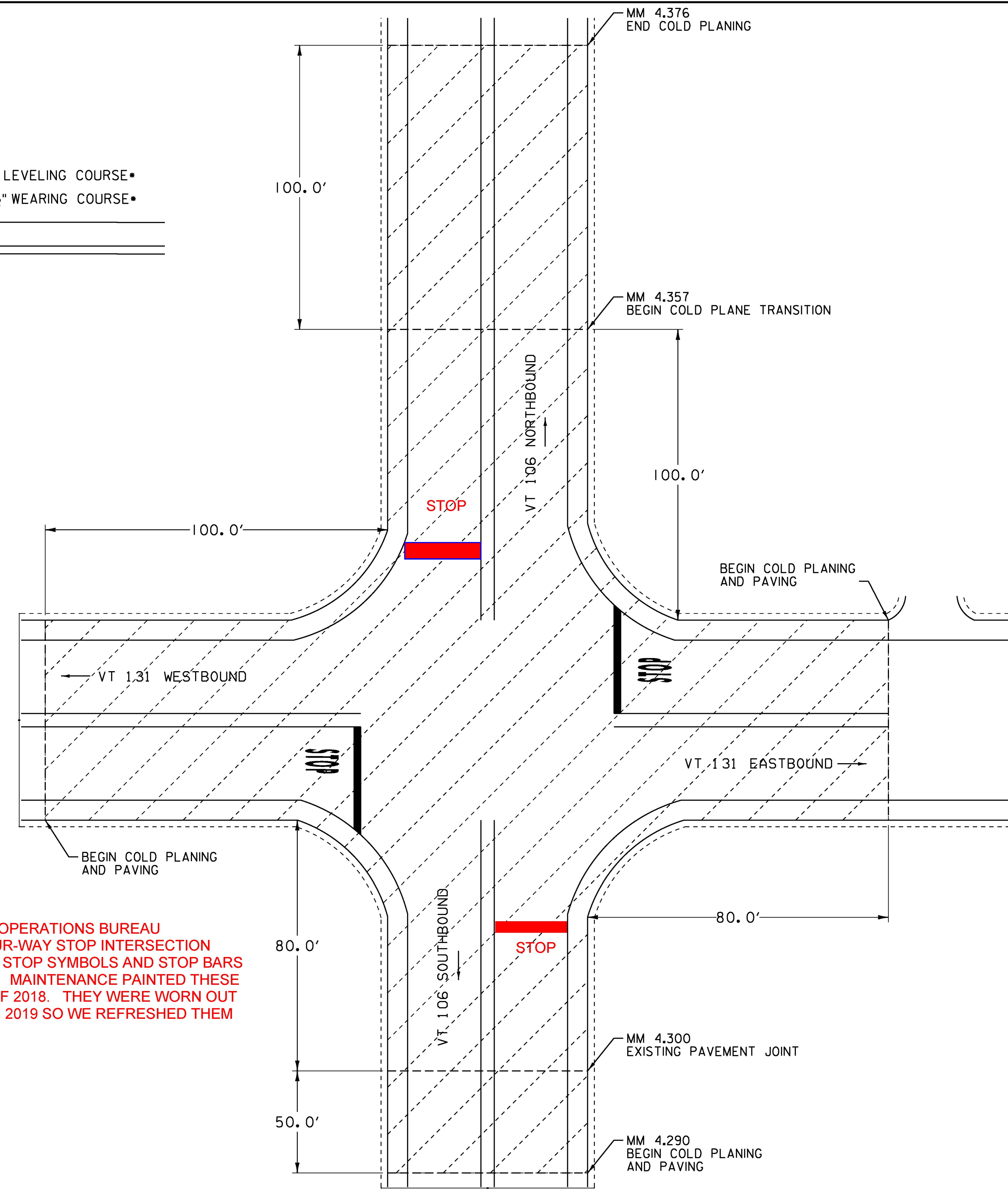


MAINLINE BEGIN APPROACH AND TRANSITION DETAIL

NOTE: BEGIN COLD PLANING AND PAVING WITH BUTT JOINT AND WEDGE AS SHOWN IN THIS DETAIL FOR VT 131 WESTBOUND AND EASTBOUND APPROACH.
 •SEE VT 106 TYPICAL'S.

PROJECT TYPICAL WIDTHS

MM	MM	FT	FT	FT	FT
WEATHERSFIELD	LT SH	LT LANE	RT LANE	RT SH	
4.290	4.338	4	11	11	4
4.338	4.376	1.5	11	11	1.5
4.376	7.190	1.5	11	11	1.5
7.190	7.223	4	11	11	4
CAVENDISH					
0.000	0.120	4	11	11	4
0.120	0.323	6	11	11	7
0.323	0.429	1.5	11	11	1.5
READING					
0.000	0.509	1.5	11	11	1.5
0.509	0.770	1.5	11	11	1.5
0.770	0.840	10	11	11	5
0.840	1.160	10	11	11	5
1.160	1.217	1.5	11	11	1.5
1.217	1.380	5	11	11	5
1.380	1.750	5.5	11	11	8
1.750	1.795	6	11	11	11.5
1.795	2.080	6.5	11	11	6.5
2.080	2.210	6	11	11	6
2.210	2.218	6	11	11	5
2.218	2.258	4	11	11	4
2.258	3.290	1.5	11	11	1.5
3.290	3.296	2	11	11	3
3.296	3.681	1.5	11	11	1.5
3.681	3.942	2	11	11	2
3.942	4.128	1	11	11	3
4.128	4.138	1.5	11	11	1.5
4.138	4.207	1	11	11	3
4.207	4.300	1.25	11	11	1.25
4.300	4.447	1	11	11	3
4.447	4.569	3	11	11	3
4.569	5.164	3	11	11	1
5.164	5.373	3	11	11	4
5.373	5.778	2.5	11	11	3
5.778	5.950	2.5	11	11	2.5
5.950	6.011	6	11	11	4
6.011	6.206	3.5	11	11	3.5
6.206	6.644	2.5	11	11	3.5
6.644	6.749	5	11	11	2
6.749	7.019	3	11	11	3
7.019	7.277	2.5	11	11	2.5



THE MAINTENANCE AND OPERATIONS BUREAU CHANGED THIS TO A FOUR-WAY STOP INTERSECTION DURING THIS PROJECT. STOP SYMBOLS AND STOP BARS WERE ADDED TO VT 106. MAINTENANCE PAINTED THESE SYMBOLS IN OCTOBER OF 2018. THEY WERE WORN OUT COMPLETELY BY SPRING 2019 SO WE REFRESHED THEM WITH EPOXY.

BEGIN APPROACH COLD PLANE DETAIL

WEATHERSFIELD VT ROUTE 106 & VT ROUTE 131 EAST/WEST APPROACH

PROJECT NAME:	WEATHERSFIELD-READING
PROJECT NUMBER:	STP FPAV(I2)
FILE NAME: COMP. STP FPAV(I1),(I2) & (I3).dgn	PLOT DATE: 04-APR-2018
PROJECT LEADER: B. KIPP	DRAWN BY: N. PAPPAS
DESIGNED BY: N. PAPPAS	CHECKED BY: B. KIPP
TYPICAL AND DETAIL SHEET 2	SHEET 32 OF 53

NOT TO SCALE