

INDEX OF SHEETS

- 1 TITLE SHEET
- 2 QUANTITY SHEET
- 3 TRAFFIC CONTROL PLAN
- 4 MISCELLANEOUS DETAILS SHEET
- 5-7 ROAD QUANTITY SHEETS 1-3
- 8 ROAD SUMMARY SHEET
- 9-17 CLASS 2 TOWN HIGHWAY QUANTITIES SHEET 1-9

VTRANS STANDARDS

E-192	PAVEMENT MARKING DETAILS	10/12/2000
E-193	PAVEMENT MARKING DETAILS	08/18/1995
T-1	TRAFFIC CONTROL GENERAL NOTES	04/25/2016
T-11	CONSTRUCTION APPROACH SIGNING DIVIDED HIGHWAY ONE LANE CLOSED	08/06/2012
T-12	TRAFFIC CONTROL DIVIDED HIGHWAY ONE LANE CLOSED	08/06/2012
T-22	TRAFFIC CONTROL FOR PAVEMENT MARKING ON DIVIDED HIGHWAY	08/06/2012
T-23	TRAFFIC CONTROL FOR PAVEMENT MARKING ON DIVIDED HIGHWAY	08/06/2012
T-24	TRAFFIC CONTROL FOR MAINTENANCE PAVEMENT MARKING OPERATION	08/06/2012
T-28	CONSTRUCTION SIGN DETAILS	08/06/2012
T-29	CONSTRUCTION SIGN DETAILS	08/06/2012
T-31	CONSTRUCTION SIGN DETAILS	08/06/2012

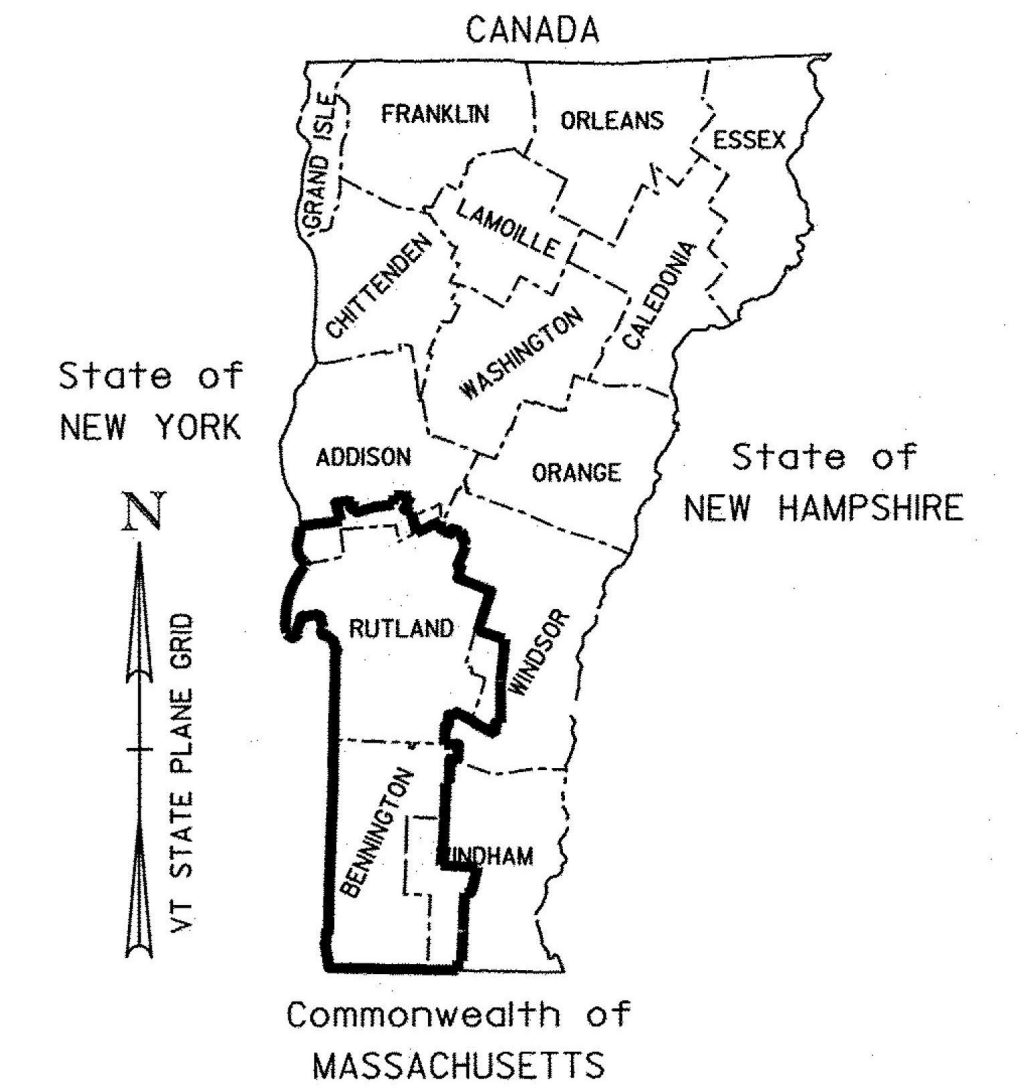
STATE OF VERMONT AGENCY OF TRANSPORTATION



PROPOSED IMPROVEMENT STATEWIDE - SOUTHWEST REGION VARIOUS FUNCTIONAL CLASSIFICATIONS OF STATE ROADS, CLASS 1 & CLASS 2 TOWN HIGHWAYS

APPLICATION OF CENTER LINE, EDGE LINE AND LANE LINE MARKINGS ON NATIONAL HIGHWAY AND STATE SYSTEM ROADS. APPLICATION OF CENTER LINE MARKINGS ONLY ON CLASS 1 AND CLASS 2 TOWN HIGHWAYS WITHIN THE SOUTHWEST REGION (DISTRICT #1, DISTRICT #3).

LENGTH OF PROJECT 969.504 MI = 5,118,981.12 LF



Record Plans

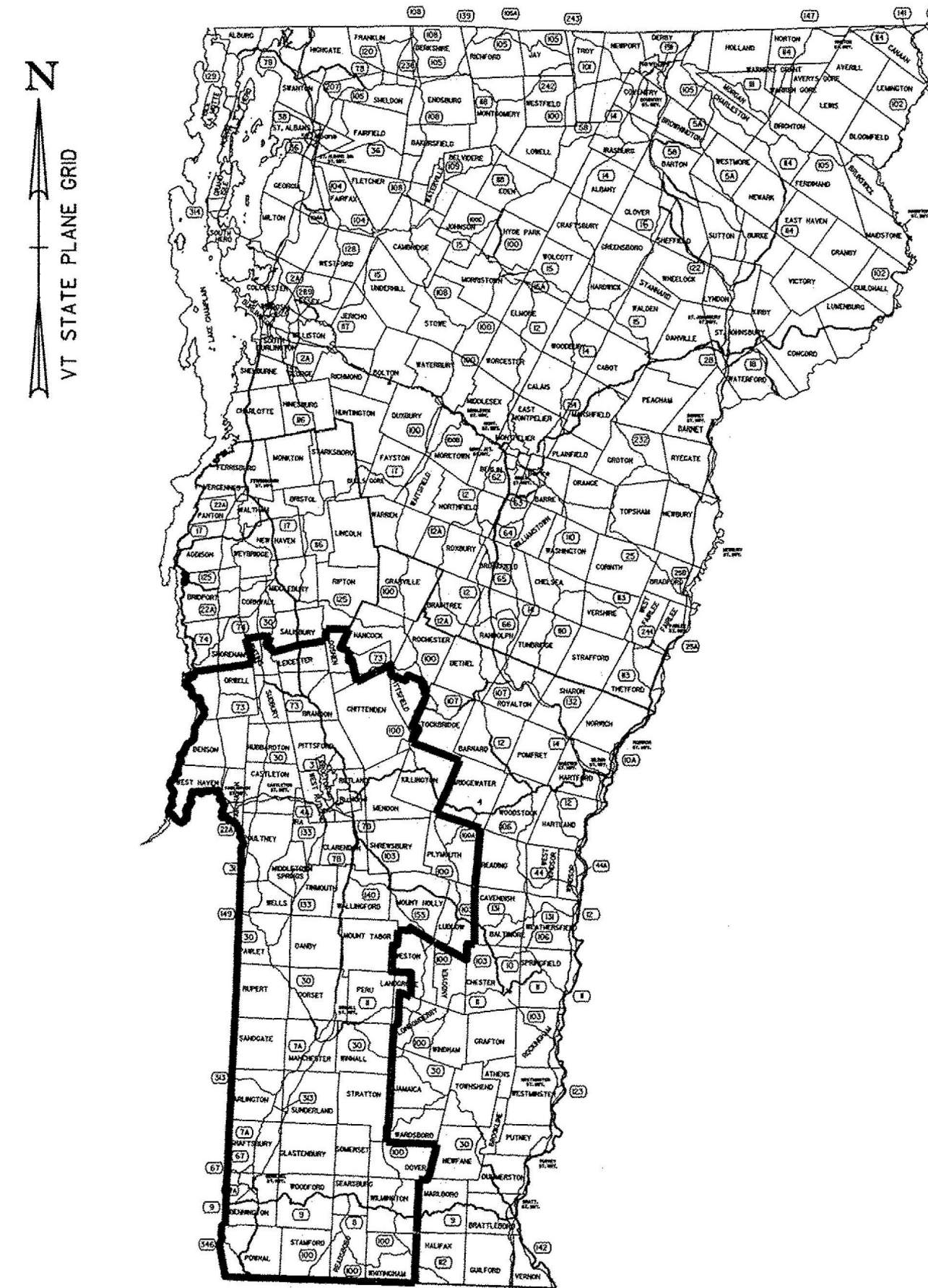
Contractor: HI-WAY SAFETY SYSTEMS, INC.
Resident Engineer: JUDY GILMORE
Construction Began: MAY 31, 2018
Construction Complete: SEPTEMBER 28, 2019
Record Plans By: JUDY GILMORE

I hereby certify that all construction required by this set of drawings has been accomplished as indicated herein.

E-SIGNED by Judy Gilmore
on 2021-01-07 16:13:58 GMT Resident Engineer

Date: January 07, 2021

NOTE: Any further information concerning final quantities, amounts or other details relative to this project may be found at Central Files in the electronic archives.



CONSTRUCTION IS TO BE CARRIED ON IN ACCORDANCE WITH THESE PLANS AND THE STANDARD SPECIFICATIONS FOR CONSTRUCTION DATED 2011, AS APPROVED BY THE FEDERAL HIGHWAY ADMINISTRATION ON JULY 20, 2011 FOR USE ON THIS PROJECT, INCLUDING ALL SUBSEQUENT REVISIONS AND SUCH REVISED SPECIFICATIONS AND SPECIAL PROVISIONS AS ARE INCORPORATED IN THESE PLANS.

QUALITY ASSURANCE PROGRAM : LEVEL 1	
SURVEYED BY :	N/A
SURVEYED DATE :	N/A
DATUM	
VERTICAL	N/A
HORIZONTAL	N/A

Record Plans

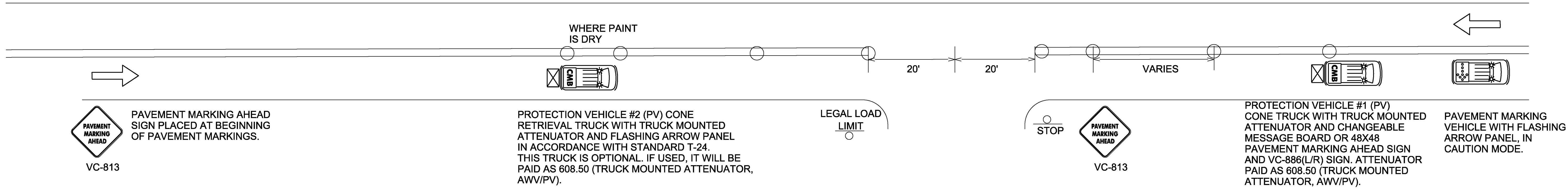
DIRECTOR OF PROJECT DELIVERY	
APPROVED <i>[Signature]</i>	DATE 2/16/2018
PROJECT MANAGER : PATRICIA COBURN P.E.	
PROJECT NAME : STATEWIDE-SOUTHWEST REGION	
PROJECT NUMBER : STPG MARK(313)	
SHEET 1 OF 17 SHEETS	

QUANTITY SHEET 1

SUMMARY OF ESTIMATED QUANTITIES										TOTALS			DESCRIPTIONS				DETAILED SUMMARY OF QUANTITIES		
									ROADWAY	GRAND TOTAL	FINAL	UNIT	ITEMS	ITEM NUMBER	ROUND	QUANTITIES	UNIT	ITEMS	
									1500	1500		HR	TRUCK-MOUNTED ATTENUATOR, AWW/PV	608.50	EST				
									1	1		LS	MOBILIZATION/DEMOBILIZATION	635.11	--				
									1	1		LS	TRAFFIC CONTROL	641.10	--				
									8700000	8700000		LF	4 INCH WHITE LINE, WATERBORNE PAINT	646.201	EST				
									19500000	19500000		LF	4 INCH YELLOWLINE, WATERBORNE PAINT	646.2111	EST				
									820000	820000		LF	6 INCH WHITE LINE, WATERBORNE PAINT	646.2141	EST				
									660000	660000		LF	6 INCH YELLOWLINE, WATERBORNE PAINT	646.2151	EST				
									1500	1500		LF	8 INCH WHITE LINE, WATERBORNE PAINT	646.221	EST				
									48000	48000		LF	12 INCH WHITE LINE, WATERBORNE PAINT	646.241	EST				
									3500	3500		DL	SPECIAL PROVISION (UNIFORMED TRAFFIC OFFICERS) (N.A.B.I.)	900.615	EST				

PROJECT NAME: STATEWIDE SOUTHWEST REGION
 PROJECT NUMBER: STPG MARK(313)
 FILE NAME: t17+065frm.dgn PLOT DATE: 2/14/2018
 PROJECT LEADER: P. COBURN DRAWN BY: M. BOGACZYK
 DESIGNED BY: M. BOGACZYK CHECKED BY: P. COBURN
 QUANTITY SHEET SHEET 2 OF 17

TRAFFIC CONTROL PLAN



NOTES

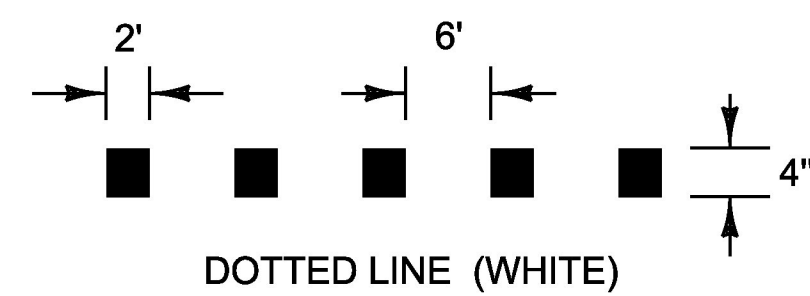
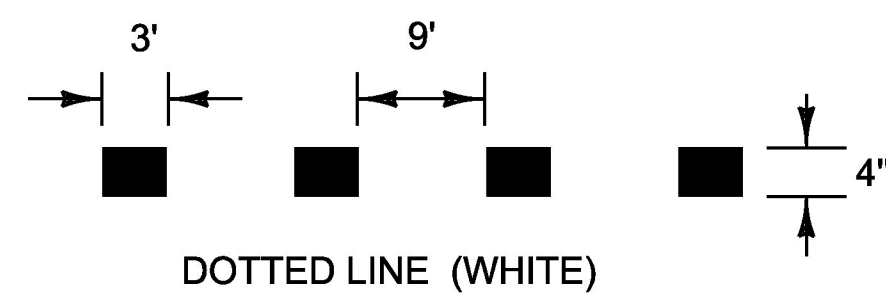
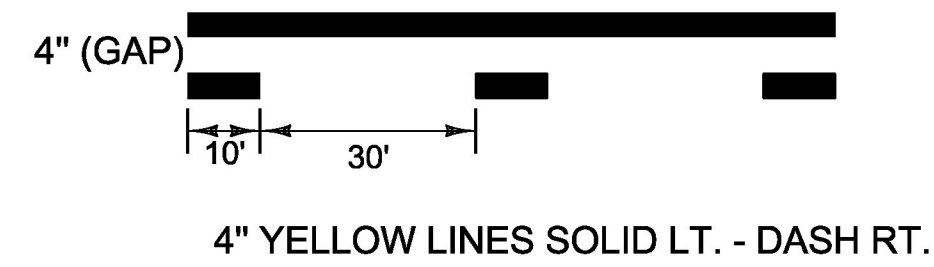
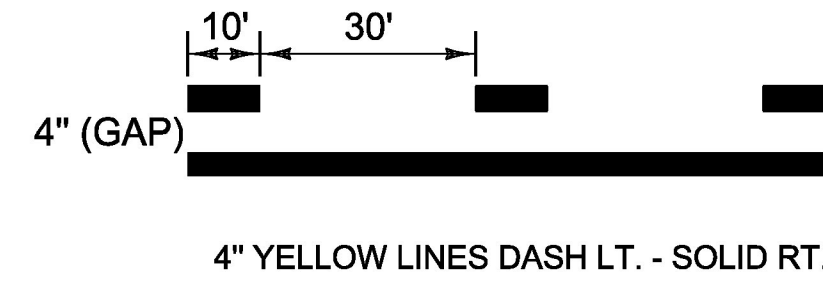
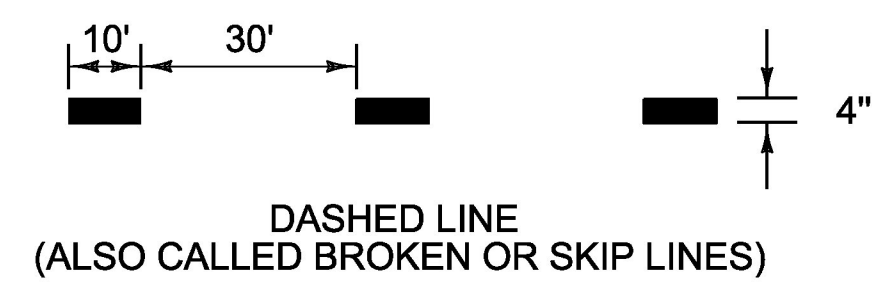
1. ALL WORK VEHICLES USED SHALL DISPLAY HIGH-INTENSITY ROTATING, FLASHING, OSCILLATING OR STROBE LIGHTS.
2. ALL PROTECTION VEHICLES SHALL BE EQUIPPED WITH A TRUCK MOUNTED ATTENUATOR WITH A VC-866(L/R) SIGN IN ACCORDANCE WITH STANDARD T-29 ATTACHED AND A FLASHING ARROW PANEL IN ACCORDANCE WITH STANDARD T-24. PAYMENT WILL BE MADE UNDER ITEM 608.50 (TRUCK MOUNTED ATTENUATOR, AWW/PV).
3. FLASHING ARROW PANELS MOUNTED TO VEHICLES WILL NOT BE PAID FOR DIRECTLY, BUT WILL BE CONSIDERED INCIDENTAL TO ITEM 641.10 (TRAFFIC CONTROL). FLASHING ARROW PANELS SHALL BE USED IN CAUTION MODE WHEN VEHICLE IS IN TRAVEL LANE.
4. PROTECTION VEHICLE #1 SHALL TRAVEL AT A VARYING DISTANCE FROM PAVEMENT MARKING VEHICLE WHILE SETTING CONES ON THE WET PAINT TO ENSURE ADEQUATE SIGHT DISTANCE FOR TRAFFIC APPROACHING FROM THE REAR.
5. THE NUMBER OF CHANNELIZING DEVICES AND OTHER TRAFFIC CONTROL DEVICES SHOWN ON THIS SHEET ARE FOR ILLUSTRATIVE PURPOSES ONLY. THE ACTUAL NUMBER REQUIRED IS TO BE DETERMINED BY THE CONTRACTOR IN ACCORDANCE WITH THE MUTCD AND STANDARD T-24 BASED ON FIELD CONDITIONS OR AS DIRECTED BY THE ENGINEER.
6. CONE VEHICLES SHALL HAVE PROTECTIVE CAGES TO PROTECT THE PERSON PLACING AND RETRIEVING CONES.
7. PAVEMENT MARKING AHEAD SIGNS IN ACCORDANCE WITH STANDARD T-28 SHALL BE PLACED AT THE BEGINNING OF PAVEMENT MARKING OPERATION AND AT A MINIMUM OF EVERY THREE MILES. THEY SHALL ALSO BE PLACED AFTER EVERY NUMBERED STATE HIGHWAY OR MAJOR INTERSECTION INCLUDING COMMERCIAL DRIVES.
8. WORK VEHICLES SHALL PULL OVER TO ALLOW VEHICLES TO PASS AT REASONABLE INTERVALS TO AVOID EXCESSIVE QUEUING AND DELAYS.
9. CONE PICK-UP MAY BE ACCOMPLISHED USING DEDICATED VEHICLE (PV#2) OR BY PROTECTION VEHICLE #1 WHEN PAINT TRUCK IS NOT OPERATING AND PAINT IS DRY. QUANTITY OF 608.50 (TRUCK MOUNTED ATTENUATOR, AWW/PV) SHALL BE MEASURED AS THE NUMBER OF VEHICLE HOURS USED.
10. CONES SHALL BE LEFT IN PLACE UNTIL PAINT IS DRY AND NOT TRACKING.
11. ALL TRAFFIC CONTROL ITEMS WILL BE PAID UNDER PAY ITEM 641.10 UNLESS OTHERWISE SPECIFIED.

LEGEND

- INDICATES TRAFFIC FLOW
- FLASHING ARROW PANEL
- TRUCK MOUNTED ATTENUATOR
- CHANGEABLE MESSAGE BOARD
- 28" RETROREFLECTORIZED CONE
- MARKING OPERATIONS VEHICLE

PROJECT NAME: STATEWIDE SOUTHWEST REGION	
PROJECT NUMBER: STPG MARK(313)	
FILE NAME: t17+065frrm.dgn	PLOT DATE: 2/14/2018
PROJECT LEADER: P. COBURN	DRAWN BY: M. BOGACZYK
DESIGNED BY: M. BOGACZYK	CHECKED BY: P. COBURN
TRAFFIC CONTROL PLAN	SHEET 3 OF 17

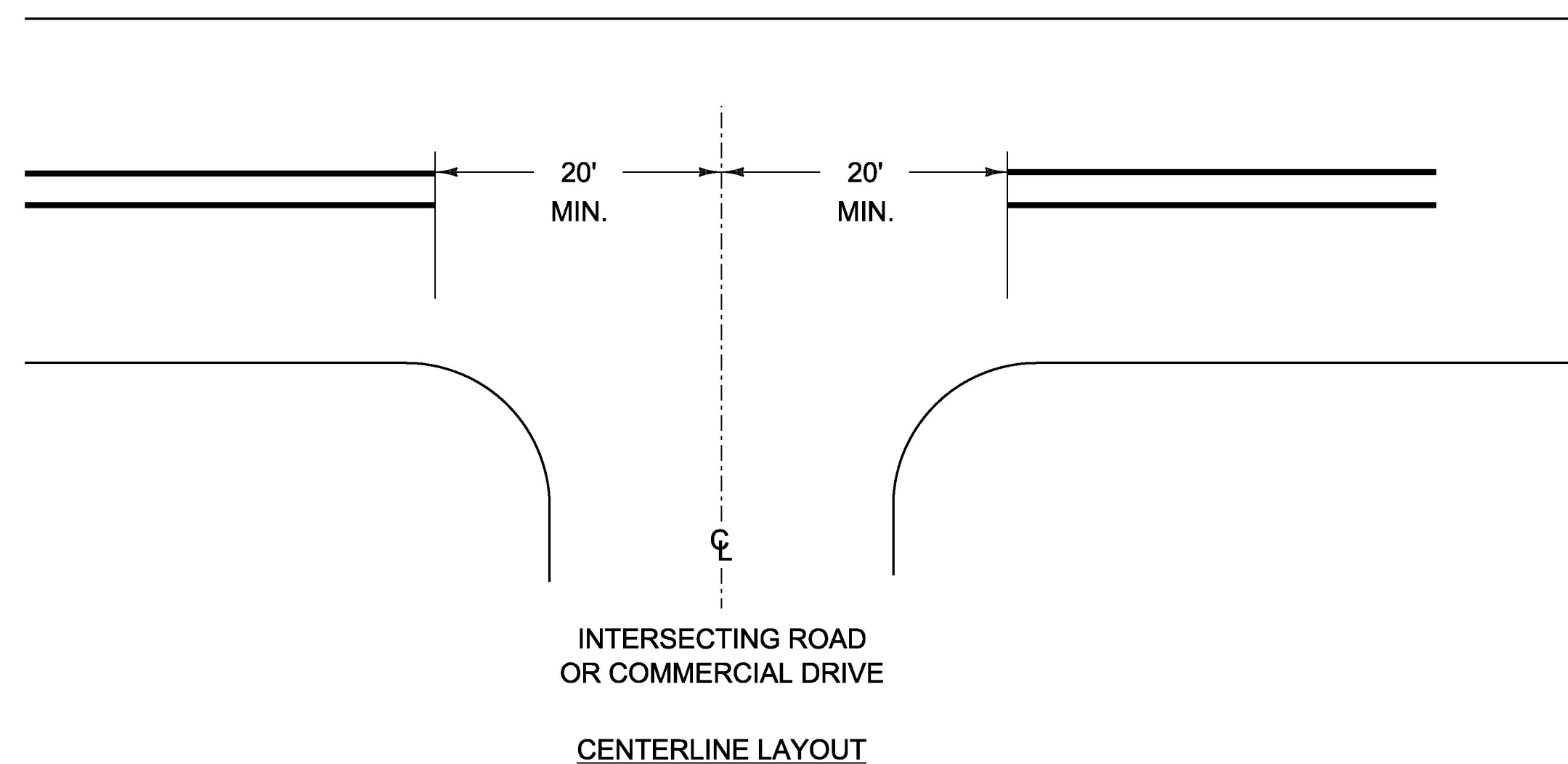
NOT TO SCALE



PAVEMENT MARKING LINE DETAILS

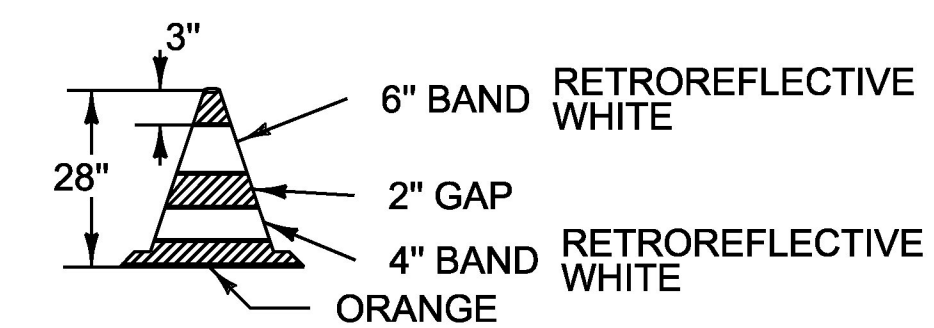
NOTES:

1. ALL MARKINGS SHALL BE APPLIED TO MATCH EXISTING OR AS DIRECTED BY THE ENGINEER.
2. IN AREAS THAT HAVE SIX INCH MARKINGS THERE SHALL BE A SIX INCH GAP BETWEEN LINES WITH A SIX INCH LINE WIDTH. MARKINGS SHOULD MATCH EXISTING.



CENTERLINE BREAKS:

1. AT ALL STATE HIGHWAYS, TOWN HIGHWAYS THAT HAVE STOP OR YIELD SIGNS INSTALLED.
2. COMMERCIAL DRIVES:
 - A. WHERE A SEPARATE TURN LANE EXISTS ON THE MAIN LINE (LT. OR RT.).
 - B. WHERE SIGNIFICANT TRAFFIC VOLUMES EXIST.



28" RETROREFLECTORIZED CONE

NOTES:

1. 28" RETROREFLECTORIZED CONES SHALL BE USED ON ALL ROADWAYS.
2. CONES MAY BE WEIGHTED TO PREVENT OVER-TURNING, HOWEVER THE WEIGHTS SHALL NOT PRESENT A HAZARD IF THE CONE IS STRUCK.

GENERAL NOTES:

1. ALL ROADS LISTED IN THE PLANS SHALL BE MARKED WITH A COMPLETE APPLICATION OF MARKINGS AS SPECIFIED IN THE CONTRACT DOCUMENTS ONCE IN THE 2018 CONSTRUCTION SEASON AND ONCE IN THE 2019 CONSTRUCTION SEASON, UNLESS OTHERWISE DIRECTED BY THE ENGINEER.
2. NATIONAL HIGHWAY SYSTEM AND STATE HIGHWAY SYSTEM ROADS SHALL BE MARKED WITH YELLOW CENTERLINE AND WHITE EDGE LINE AND LANE LINES TO MATCH EXISTING. CLASS 1 AND CLASS 2 TOWN HIGHWAYS SHALL BE MARKED WITH YELLOW CENTERLINE ONLY.
3. ROADS THAT ARE SCHEDULED FOR REPAIR OR ARE PART OF AN ACTIVE CONSTRUCTION PROJECT SHALL BE EXCLUDED AT THE DIRECTION OF THE ENGINEER. ANY MARKINGS DEEMED BY THE ENGINEER TO NOT REQUIRE REPAINTING SHALL BE EXCLUDED FROM THE PROJECT.
4. THE TOTAL QUANTITY MEASURED FOR PAYMENT WILL BE THE ACTUAL QUANTITY MARKED AS DIRECTED BY THE ENGINEER.
5. THE CONTRACTOR SHALL COORDINATE WITH VTRANS TO SCHEDULE MARKING ON ALL ROADS THAT ARE SCHEDULED FOR REPAIRS OR RETREATMENT.
6. LANES TO BE PAINTED ON BOTH SIDES SHALL BE MARKED IN MULTIPLE PASSES SUCH THAT TRAFFIC DOES NOT TRAVEL BETWEEN WET PAINT AT ANY TIME. PAINT SHALL BE ALLOWED TO FULLY DRY BEFORE ANY SUBSEQUENT MARKINGS ARE APPLIED.
7. TOWN HIGHWAY MAPS ARE AVAILABLE FOR REFERENCE FROM THE VTRANS WEBSITE.
8. MARKINGS SHALL MATCH EXISTING, OR AS DIRECTED BY THE ENGINEER. THE PLANS INDICATE SIX INCH MARKINGS BASED ON BEST AVAILABLE INFORMATION. ROUNDABOUTS AND OTHER LOCATIONS MAY ALSO HAVE SIX INCH MARKINGS AND SHALL BE MARKED TO MATCH EXISTING. PAYMENT WILL BE FOR THE ACTUAL QUANTITY APPLIED OF EACH MARKING AS DIRECTED BY THE ENGINEER.
9. LONGITUDINAL 8 INCH AND 12 INCH WHITE LINES, EXCLUDING DIAGONAL GORE MARKINGS, SHALL BE MARKED AND MATCH EXISTING, OR AS DIRECTED BY THE ENGINEER.
10. SIDE ROAD RADII SHALL BE MARKED IN ACCORDANCE WITH STD. E-193.
11. ROUTES NOTED AS NIGHT WORK IN THE PLANS ARE REQUIRED TO BE MARKED AT NIGHT. THE CONTRACTOR MAY PROPOSE OTHER ROUTES TO BE MARKED AT NIGHT SUBJECT TO APPROVAL BY THE ENGINEER.

NOT TO SCALE

PROJECT NAME:	STATEWIDE SOUTHWEST REGION
PROJECT NUMBER:	STPG MARK(313)
FILE NAME: +17+065frm.dgn	PLOT DATE: 2/14/2018
PROJECT LEADER: P. COBURN	DRAWN BY: M. BOGACZYK
DESIGNED BY: M. BOGACZYK	CHECKED BY: P. COBURN
MISCELLANEOUS DETAILS SHEET	SHEET 4 OF 17

SUMMARY BY ROUTE OF STATE HIGHWAYS AND CLASS 1 TOWN HIGHWAYS

COUNTY	TOWN NAME	ROUTE NAME	HIGHWAY SIGN	SEGMENT LENGTH (MI)	SEGMENT LENGTH (FT)	COMMENTS
RUTLAND COUNTY	WEST RUTLAND	BR US-BR4	BR US-BR4	1.012	5343.36	
RUTLAND COUNTY	WEST RUTLAND	BR US-BR4	BR US-BR4	0.420	2217.60	
RUTLAND COUNTY	WEST RUTLAND	BR US-BR4	BR US-BR4	0.420	2217.60	DIVIDED
RUTLAND COUNTY	WEST RUTLAND	BR US-BR4	BR US-BR4	0.076	401.28	
RUTLAND COUNTY	WEST RUTLAND	BR US-BR4	BR US-BR4	0.045	237.60	RAMP, DIVIDED
RUTLAND COUNTY	WEST RUTLAND	BR US-BR4	BR US-BR4	0.195	1029.60	JUGHANDLE
RUTLAND COUNTY	RUTLAND TOWN	BR US-BR4	BR US-BR4	0.820	4329.60	PRIORITIZED WORK
RUTLAND COUNTY	RUTLAND TOWN	BR US-BR4	BR US-BR4	0.177	934.56	
RUTLAND COUNTY	RUTLAND TOWN	BR US-BR4	BR US-BR4	0.177	934.56	PRIORITIZED WORK, DIVIDED
RUTLAND COUNTY	RUTLAND CITY	TH-2	BUS-4	1.942	10253.76	PRIORITIZED WORK
			BR US-BR4 TOTAL	5.284	27899.52	
BENNINGTON COUNTY	BENNINGTON	NSH-BNSH	BENNINGTON STATE HIGHWAY	0.236	1246.08	BEGINS AT US 7 EXT 2 OFF RAMP AND ENDS AT VT 7A, DIVIDED
BENNINGTON COUNTY	BENNINGTON	NSH-BNSH	BENNINGTON STATE HIGHWAY	0.236	1246.08	
			NSH-BNSH TOTAL	0.472	2492.16	
RUTLAND COUNTY	CASTLETON	NSH-CSH	CASTLETON STATE HIGHWAY	0.398	2101.44	BEGINS AT VT 4A AND ENDS APPROXIMATELY 300 FEET PAST VT 4 OFF RAMP
			NSH-CSH TOTAL	0.398	2101.44	
RUTLAND COUNTY	CLARENDON	NSH-CSH	CLARENDON STATE HIGHWAY	0.914	4825.92	BEGINS AT AIRPORT AND ENDS AT VT 103
			NSH-CSH TOTAL	0.914	4825.92	
RUTLAND COUNTY	FAIR HAVEN	NSH-FHSH	FAIR HAVEN STATE HIGHWAY	0.587	3099.36	
RUTLAND COUNTY	FAIR HAVEN	TH-8	FAIR HAVEN STATE HIGHWAY	0.011	58.08	BEGINS AT INTERSECTION OF 4TH ST AND ENDS APPROXIMATELY 250 FT PAST OFF RAMP
RUTLAND COUNTY	FAIR HAVEN	TH-8	FAIR HAVEN STATE HIGHWAY	0.023	121.44	
			NSH-FHSH TOTAL	0.621	3278.88	
BENNINGTON COUNTY	WINHALL	NSH-WSH	WINHALL STATE HIGHWAY	0.402	2122.56	BEGINS AT VT 11 AND ENDS AT TOWN BORDER
			NSH-WSH TOTAL	0.402	2122.56	

COUNTY	TOWN NAME	ROUTE NAME	HIGHWAY SIGN	SEGMENT LENGTH (MI)	SEGMENT LENGTH (FT)	COMMENTS
BENNINGTON COUNTY	POWNAI	US-7	US-7	7.731	40819.68	NHS
BENNINGTON COUNTY	POWNAI	US-7	US-7	0.257	1356.96	
BENNINGTON COUNTY	POWNAI	US-7	US-7	0.257	1356.96	NHS, DIVIDED
BENNINGTON COUNTY	BENNINGTON	TH-1	US-7	1.651	8717.28	PRIORITIZED WORK, NHS, 6 INCH
BENNINGTON COUNTY	BENNINGTON	US-7	US-7	3.364	17761.92	
BENNINGTON COUNTY	BENNINGTON	US-7	US-7	3.044	16072.32	PRIORITIZED WORK, NHS, 6 INCH, DIVIDED
BENNINGTON COUNTY	BENNINGTON	US-7	US-7	2.510	13252.80	PRIORITIZED WORK, NHS, 6 INCH
BENNINGTON COUNTY	BENNINGTON	US-7	US-7	0.345	1821.60	PRIORITIZED WORK, NHS, 6 INCH, EXT 2 NB ON RAMP
BENNINGTON COUNTY	BENNINGTON	US-7	US-7	0.459	2423.52	PRIORITIZED WORK, NHS, 6 INCH, EXT 2 NB OFF RAMP
BENNINGTON COUNTY	BENNINGTON	US-7	US-7	0.800	4224.00	PRIORITIZED WORK, NHS, 6 INCH, FROM VT 279 TO US 7 NB
BENNINGTON COUNTY	BENNINGTON	US-7	US-7	0.089	469.92	PRIORITIZED WORK, NHS, 6 INCH, PARKING LOT TO US 7 NB RAMP
BENNINGTON COUNTY	BENNINGTON	US-7	US-7	0.302	1594.56	PRIORITIZED WORK, NHS, 6 INCH, FROM US 7 SB TO VT 279 EB
BENNINGTON COUNTY	BENNINGTON	US-7	US-7	0.389	2053.92	PRIORITIZED WORK, NHS, 6 INCH, EXT 2 SB ON RAMP
BENNINGTON COUNTY	BENNINGTON	US-7	US-7	0.345	1821.60	PRIORITIZED WORK, NHS, 6 INCH, EXT 2 SB OFF RAMP
BENNINGTON COUNTY	BENNINGTON	US-7	US-7	0.454	2397.12	PRIORITIZED WORK, NHS, 6 INCH
BENNINGTON COUNTY	SHAFTSBURY	US-7	US-7	5.364	28321.92	NHS, 6 INCH
BENNINGTON COUNTY	GLASTENBURY	US-7	US-7	1.784	9419.52	NHS, 6 INCH
BENNINGTON COUNTY	SUNDERLAND	US-7	US-7	7.179	37905.12	NHS, 6 INCH
BENNINGTON COUNTY	SUNDERLAND	US-7	US-7	0.189	997.92	NHS, 6 INCH, NB OFF RAMP
BENNINGTON COUNTY	SUNDERLAND	US-7	US-7	0.201	1061.28	NHS, 6 INCH, NB ON RAMP
BENNINGTON COUNTY	SUNDERLAND	US-7	US-7	0.401	2117.28	
BENNINGTON COUNTY	SUNDERLAND	US-7	US-7	0.044	232.32	NHS, 6 INCH, SB OFF RAMP, END DIVIDED
BENNINGTON COUNTY	SUNDERLAND	US-7	US-7	0.482	2544.96	
BENNINGTON COUNTY	SUNDERLAND	US-7	US-7	0.040	211.20	NHS, 6 INCH, SB ON RAMP, BEGINNING DIVIDED
BENNINGTON COUNTY	MANCHESTER	US-7	US-7	7.520	39705.60	NHS, 6 INCH
BENNINGTON COUNTY	MANCHESTER	US-7	US-7	0.367	1937.76	
BENNINGTON COUNTY	MANCHESTER	US-7	US-7	0.017	89.76	NHS, 6 INCH, NB OFF RAMP, END DIVIDED
BENNINGTON COUNTY	MANCHESTER	US-7	US-7	0.264	1393.92	NHS, 6 INCH, NB ON RAMP, BEGINNING DIVIDED
BENNINGTON COUNTY	MANCHESTER	US-7	US-7	0.036	190.08	
BENNINGTON COUNTY	MANCHESTER	US-7	US-7	0.244	1288.32	NHS, 6 INCH, SB ON RAMP
BENNINGTON COUNTY	MANCHESTER	US-7	US-7	0.379	2001.12	NHS, 6 INCH, SB OFF RAMP
BENNINGTON COUNTY	MANCHESTER	US-7	US-7	0.251	1325.28	NHS, 6 INCH, SB ON RAMP
BENNINGTON COUNTY	DORSET	US-7	US-7	6.718	35471.04	NHS, 6 INCH
RUTLAND COUNTY	MOUNT TABOR	US-7	US-7	4.183	22086.24	NHS
RUTLAND COUNTY	DANBY	US-7	US-7	2.473	13057.44	NHS
RUTLAND COUNTY	WALLINGFORD	US-7	US-7	6.498	34309.44	NHS, 6 INCH
RUTLAND COUNTY	WALLINGFORD	US-7	US-7	0.596	3146.88	
RUTLAND COUNTY	WALLINGFORD	US-7	US-7	0.596	3146.88	NHS, 6 INCH, DIVIDED
RUTLAND COUNTY	CLARENDON	US-7	US-7	5.656	29863.68	
RUTLAND COUNTY	CLARENDON	US-7	US-7	5.592	29525.76	PRIORITIZED WORK, NHS, 6 INCH, DIVIDED
RUTLAND COUNTY	CLARENDON	US-7	US-7	0.114	601.92	PRIORITIZED WORK, NHS, 6 INCH, RAMP
RUTLAND COUNTY	RUTLAND TOWN	US-7	US-7	0.684	3611.52	
RUTLAND COUNTY	RUTLAND TOWN	US-7	US-7	0.684	3611.52	PRIORITIZED WORK, NHS, 6 INCH, DIVIDED
RUTLAND COUNTY	RUTLAND CITY	TH-1	US-7	2.809	14831.52	PRIORITIZED WORK, NHS
RUTLAND COUNTY	RUTLAND TOWN	US-7	US-7	3.277	17302.56	PRIORITIZED WORK, NHS
RUTLAND COUNTY	PITTSFORD	US-7	US-7	7.591	40080.48	PRIORITIZED WORK, NHS
RUTLAND COUNTY	BRANDON	TH-1	US-7	1.388	7328.64	PRIORITIZED WORK, NHS
RUTLAND COUNTY	BRANDON	US-7	US-7	6.039	31885.92	PRIORITIZED WORK, NHS
ADDISON COUNTY	LEICESTER	US-7	US-7	3.425	18084.00	PRIORITIZED WORK, NHS
			US-7 TOTAL	105.082	554832.96	

AS PER PROJECT MANAGER PATTI COBURN, ROUTE 7 IS TO BE SKIPPED IN ITS ENTIRETY AS THE RUMBL(4) JOB WILL PAINT ROUTE 7 IN 2018.

NSH = NAMED STATE HIGHWAY
NHS = NATIONAL HIGHWAY SYSTEM.

SIX INCH = ROUTES THAT SHOULD BE MARKED AS SIX INCH LINES. THESE ARE ESTIMATED ROUTES. MARKINGS SHALL MATCH EXISTING OR AS DIRECTED BY THE ENGINEER.

NIGHT WORK = AREAS THAT ARE DESIGNATED FOR NIGHT WORK.

DIVIDED = AREAS THAT HAVE DIVIDED SEGMENTS. EACH SEGMENT IS MEASURED IN ONE DIRECTION.

ROUNDABOUT = ROUTES THAT HAVE ROUNDABOUTS.

SEGMENT LENGTH IS PROVIDED FOR INFORMATIONAL PURPOSES ONLY. THESE LENGTHS REPRESENT ROAD CENTERLINE LENGTH AND SHALL NOT BE USED FOR MEASURING QUANTITIES FOR PAYMENT.

PROJECT NAME: STATEWIDE SOUTHWEST REGION
PROJECT NUMBER: STPG MARK(313)

FILE NAME: i17+065roadlst.dgn PLOT DATE: 2/14/2018
PROJECT LEADER: P. COBURN DRAWN BY: M. BOGACZYK
DESIGNED BY: M. BOGACZYK CHECKED BY: P. COBURN
ROAD QUANTITY SHEET 1 SHEET 5 OF 17

SUMMARY BY ROUTE OF STATE HIGHWAYS AND CLASS 1 TOWN HIGHWAYS

COUNTY	TOWN NAME	ROUTE NAME	HIGHWAY SIGN	SEGMENT LENGTH (MI)	SEGMENT LENGTH (FT)	COMMENTS
RUTLAND COUNTY	RUTLAND TOWN	VT-3	VT-3	0.042	221.76	RAMP
RUTLAND COUNTY	RUTLAND TOWN	VT-3	VT-3	1.695	8949.60	
RUTLAND COUNTY	PROCTOR	VT-3	VT-3	1.804	9525.12	
RUTLAND COUNTY	PROCTOR	TH-1	VT-3	1.479	7809.12	
RUTLAND COUNTY	PITTSFORD	VT-3	VT-3	2.850	15048.00	
RUTLAND COUNTY	PITTSFORD	VT-3	VT-3	0.042	221.76	RAMP
		VT-3 TOTAL		7.912	41775.36	
RUTLAND COUNTY	FAIR HAVEN	VT-4A	VT-4A	1.708	9018.24	
RUTLAND COUNTY	FAIR HAVEN	TH-1	VT-4A	1.534	8099.52	
RUTLAND COUNTY	CASTLETON	VT-4A	VT-4A	5.841	30840.48	
RUTLAND COUNTY	CASTLETON	TH-1	VT-4A	1.096	5786.88	
RUTLAND COUNTY	IRA	VT-4A	VT-4A	1.301	6869.28	
RUTLAND COUNTY	WEST RUTLAND	VT-4A	VT-4A	1.808	9546.24	PRIORITIZED WORK
RUTLAND COUNTY	WEST RUTLAND	TH-1	VT-4A	0.875	4620.00	PRIORITIZED WORK
		VT-4A TOTAL		14.163	74780.64	
BENNINGTON COUNTY	BENNINGTON	VT-7A	VT-7A	3.091	16320.48	PRIORITIZED WORK
BENNINGTON COUNTY	BENNINGTON	VT-7A	VT-7A	0.067	353.76	PRIORITIZED WORK, DIVIDED
BENNINGTON COUNTY	BENNINGTON	VT-7A	VT-7A	0.067	353.76	
BENNINGTON COUNTY	BENNINGTON	VT-7A	VT-7A	0.047	248.16	PRIORITIZED WORK, RAMP
BENNINGTON COUNTY	BENNINGTON	VT-7A	VT-7A	0.050	264.00	PRIORITIZED WORK, RAMP
BENNINGTON COUNTY	SHAFTSBURY	VT-7A	VT-7A	6.895	36405.60	PRIORITIZED WORK
BENNINGTON COUNTY	ARLINGTON	VT-7A	VT-7A	6.139	32413.92	PRIORITIZED WORK
BENNINGTON COUNTY	SUNDERLAND	VT-7A	VT-7A	2.116	11172.48	PRIORITIZED WORK
BENNINGTON COUNTY	MANCHESTER	VT-7A	VT-7A	3.047	16088.16	PRIORITIZED WORK SEE NOTE 1 BELOW
BENNINGTON COUNTY	MANCHESTER	TH-1	VT-7A	5.122	27044.16	PRIORITIZED WORK, ROUNDABOUT
BENNINGTON COUNTY	MANCHESTER	TH-1	VT-7A	0.037	195.36	PRIORITIZED WORK, DIVIDED
BENNINGTON COUNTY	MANCHESTER	TH-1	VT-7A	0.037	195.36	
BENNINGTON COUNTY	DORSET	VT-7A	VT-7A	1.576	8321.28	PRIORITIZED WORK
BENNINGTON COUNTY	DORSET	VT-7A	VT-7A	0.152	802.56	PRIORITIZED WORK, RAMP
		VT-7A TOTAL		28.443	150179.04	
RUTLAND COUNTY	WALLINGFORD	VT-7B	VT-7B	0.774	4086.72	
RUTLAND COUNTY	CLARENDON	VT-7B	VT-7B	4.406	23263.68	
		VT-7B TOTAL		5.180	27350.40	
BENNINGTON COUNTY	READSBORO	VT-8	VT-8	2.507	13236.96	
BENNINGTON COUNTY	SEARSBURG	VT-8	VT-8	2.703	14271.84	
		VT-8 TOTAL		5.210	27508.80	
BENNINGTON COUNTY	BENNINGTON	VT-9	VT-9	4.359	23015.52	NHS FROM STATE LINE TO STATE HIGHWAY ENDS SIGN
BENNINGTON COUNTY	BENNINGTON	TH-1	VT-9	0.577	3046.56	NHS
BENNINGTON COUNTY	BENNINGTON	TH-2	VT-9	1.933	10206.24	NHS
BENNINGTON COUNTY	WOODFORD	VT-9	VT-9	9.575	50556.00	NHS
BENNINGTON COUNTY	SEARSBURG	VT-9	VT-9	5.538	29240.64	NHS
WINDHAM COUNTY	WILMINGTON	VT-9	VT-9	7.160	37804.80	NHS
		VT-9 TOTAL		29.142	153869.76	
BENNINGTON COUNTY	MANCHESTER	TH-3	VT-11	1.272	6716.16	
BENNINGTON COUNTY	MANCHESTER	VT-11	VT-11	1.991	10512.48	
BENNINGTON COUNTY	WINHALL	VT-11	VT-11	4.135	21832.80	
BENNINGTON COUNTY	PERU	VT-11	VT-11	4.627	24430.56	
BENNINGTON COUNTY	LANDGROVE	VT-11	VT-11	0.821	4334.88	
		VT-11 TOTAL		12.846	67826.88	

FOR 2018:

NOTE 1:
BEGIN AT THE SUNDERLAND/MANCHESTER TOWN LINE AND STOP 2.4 MILES NORTH. BEGIN NORTH OF MANCHESTER VILLAGE AROUND MM 7.425 / STATE HIGHWAY BEGINS SIGN AND GO TO THE MANCHESTER/DORSET TOWN LINE.

NOTE 2:
FROM THE NEW YORK/VERMONT STATE LINE, GO 1.7 MILES (THROUGH SHAFTSBURY INTO NORTH BENNINGTON) AND STOP. BEGIN AT THE BENNINGTON/SHAFTSBURY TOWN LINE (JUST SOUTH OF THE INTERSECTION OF HAWKS AVE AND GRANDVIEW ST) AND CONTINUE UNTIL ROUTE 7A.

COUNTY	TOWN NAME	ROUTE NAME	HIGHWAY SIGN	SEGMENT LENGTH (MI)	SEGMENT LENGTH (FT)	COMMENTS
RUTLAND COUNTY	FAIR HAVEN	TH-2	VT-22A	0.437	2307.36	NIGHT WORK
RUTLAND COUNTY	FAIR HAVEN	TH-3	VT-22A	0.071	374.88	NIGHT WORK
RUTLAND COUNTY	FAIR HAVEN	TH-3	VT-22A	0.709	3743.52	NIGHT WORK
RUTLAND COUNTY	FAIR HAVEN	VT-22A	VT-22A	2.950	15576.00	NIGHT WORK
RUTLAND COUNTY	FAIR HAVEN	VT-22A	VT-22A	0.334	1763.52	NIGHT WORK, DIVIDED
RUTLAND COUNTY	FAIR HAVEN	VT-22A	VT-22A	0.334	1763.52	
RUTLAND COUNTY	WEST HAVEN	VT-22A	VT-22A	3.007	15876.96	NIGHT WORK
RUTLAND COUNTY	BENSON	VT-22A	VT-22A	6.276	33137.28	NIGHT WORK
ADDISON COUNTY	ORWELL	VT-22A	VT-22A	6.429	33945.12	NIGHT WORK
		VT-22A TOTAL		20.547	108488.16	
BENNINGTON COUNTY	WINHALL	VT-30	VT-30	7.659	40439.52	
BENNINGTON COUNTY	WINHALL	VT-30	VT-30	0.093	491.04	RAMP
BENNINGTON COUNTY	MANCHESTER	TH-2	VT-30	0.309	1631.52	
BENNINGTON COUNTY	MANCHESTER	VT-30	VT-30	2.480	13094.40	
BENNINGTON COUNTY	DORSET	VT-30	VT-30	5.225	27588.00	
BENNINGTON COUNTY	RUPERT	VT-30	VT-30	3.828	20211.84	
RUTLAND COUNTY	PAWLET	VT-30	VT-30	8.260	43612.80	
RUTLAND COUNTY	WELLS	VT-30	VT-30	5.093	26891.04	
RUTLAND COUNTY	POULTNEY	TH-1	VT-30	0.692	3653.76	
RUTLAND COUNTY	POULTNEY	VT-30	VT-30	8.899	46986.72	
RUTLAND COUNTY	CASTLETON	VT-30	VT-30	6.566	34668.48	
RUTLAND COUNTY	HUBBARDTON	VT-30	VT-30	5.155	27218.40	
RUTLAND COUNTY	SUDBURY	VT-30	VT-30	6.393	33755.04	
ADDISON COUNTY	WHITING	VT-30	VT-30	4.944	26104.32	
		VT-30 TOTAL		65.596	346346.88	
RUTLAND COUNTY	WELLS	VT-31	VT-31	1.756	9271.68	
RUTLAND COUNTY	POULTNEY	VT-31	VT-31	3.201	16901.28	
RUTLAND COUNTY	POULTNEY	TH-1	VT-31	0.404	2133.12	
RUTLAND COUNTY	POULTNEY	TH-2	VT-31	0.174	918.72	
		VT-31 TOTAL		5.535	29224.80	
BENNINGTON COUNTY	SHAFTSBURY	VT-67	VT-67	3.590	18955.20	
BENNINGTON COUNTY	BENNINGTON	VT-67	VT-67	0.251	1325.28	SEE NOTE 2 BELOW
BENNINGTON COUNTY	BENNINGTON	TH-1	VT-67	0.413	2180.64	
		VT-67 TOTAL		4.254	22461.12	
BENNINGTON COUNTY	BENNINGTON	TH-2	VT-67A	1.191	6288.48	PRIORITIZED WORK
BENNINGTON COUNTY	BENNINGTON	VT-67A	VT-67A	1.378	7275.84	PRIORITIZED WORK
BENNINGTON COUNTY	BENNINGTON	VT-67A	VT-67A	0.779	4113.12	PRIORITIZED WORK, DIVIDED
BENNINGTON COUNTY	BENNINGTON	VT-67A	VT-67A	0.779	4113.12	
		VT-67A TOTAL		2.936	15502.08	
ADDISON COUNTY	ORWELL	VT-73	VT-73	4.986	26326.08	
RUTLAND COUNTY	SUDBURY	VT-73	VT-73	3.194	16864.32	
RUTLAND COUNTY	BRANDON	TH-2	VT-73	0.601	3173.28	
RUTLAND COUNTY	BRANDON	TH-3	VT-73	0.257	1356.96	
RUTLAND COUNTY	BRANDON	VT-73	VT-73	6.654	35133.12	
ADDISON COUNTY	GOSHEN	VT-73	VT-73	3.610	19060.80	
RUTLAND COUNTY	CHITTENDEN	VT-73	VT-73	0.142	749.76	
		VT-73 TOTAL		19.444	102664.32	

NSH = NAMED STATE HIGHWAY
NHS = NATIONAL HIGHWAY SYSTEM.

SIX INCH = ROUTES THAT SHOULD BE MARKED AS SIX INCH LINES. THESE ARE ESTIMATED ROUTES. MARKINGS SHALL MATCH EXISTING OR AS DIRECTED BY THE ENGINEER.

NIGHT WORK = AREAS THAT ARE DESIGNATED FOR NIGHT WORK.
DIVIDED = AREAS THAT HAVE DIVIDED SEGMENTS. EACH SEGMENT IS MEASURED IN ONE DIRECTION.

ROUNDABOUT = ROUTES THAT HAVE ROUNDABOUTS.

SEGMENT LENGTH IS PROVIDED FOR INFORMATIONAL PURPOSES ONLY. THESE LENGTHS REPRESENT ROAD CENTERLINE LENGTH AND SHALL NOT BE USED FOR MEASURING QUANTITIES FOR PAYMENT.

PROJECT NAME:	STATEWIDE SOUTHWEST REGION
PROJECT NUMBER:	STPG MARK(313)
FILE NAME: +17+065roadl1st.dgn	PLOT DATE: 2/14/2018
PROJECT LEADER: P. COBURN	DRAWN BY: M. BOGACZYK
DESIGNED BY: M. BOGACZYK	CHECKED BY: P. COBURN
ROAD QUANTITY SHEET 2	SHEET 6 OF 17

COUNTY	TOWN NAME	ROUTE NAME	HIGHWAY SIGN	SEGMENT LENGTH (MI)	SEGMENT LENGTH (FT)	COMMENTS
BENNINGTON COUNTY	STAMFORD	VT-100	VT-100	5.752	30370.56	
BENNINGTON COUNTY	READSBORO	TH-1	VT-100	0.529	2793.12	
BENNINGTON COUNTY	READSBORO	VT-100	VT-100	7.509	39647.52	
WINDHAM COUNTY	WHITINGHAM	VT-100	VT-100	10.730	56654.40	
WINDHAM COUNTY	WILMINGTON	VT-100	VT-100	7.302	38554.56	
WINDHAM COUNTY	DOVER	VT-100	VT-100	5.547	29288.16	
WINDHAM COUNTY	STRATTON	VT-100	VT-100	1.337	7059.36	
WINDSOR COUNTY	LUDLOW	TH-2	VT-100	0.722	3812.16	
WINDSOR COUNTY	LUDLOW	VT-100	VT-100	7.748	40909.44	
WINDSOR COUNTY	PLYMOUTH	VT-100	VT-100	9.726	51353.28	
RUTLAND COUNTY	KILLINGTON	VT-100	VT-100	3.969	20956.32	
RUTLAND COUNTY	KILLINGTON	VT-100	VT-100	0.115	607.20	RAMP
RUTLAND COUNTY	PITTSFIELD	VT-100	VT-100	4.873	25729.44	
			VT-100 TOTAL	65.859	347735.52	
WINDSOR COUNTY	PLYMOUTH	VT-100A	VT-100A	4.762	25143.36	
			VT-100A TOTAL	4.762	25143.36	
WINDSOR COUNTY	LUDLOW	TH-1	VT-103	1.573	8305.44	PRIORITIZED WORK, NHS
WINDSOR COUNTY	LUDLOW	VT-103	VT-103	0.337	1779.36	PRIORITIZED WORK, NHS, DIVIDED
WINDSOR COUNTY	LUDLOW	VT-103	VT-103	0.337	1779.36	
WINDSOR COUNTY	LUDLOW	VT-103	VT-103	3.872	20444.16	PRIORITIZED WORK, NHS
RUTLAND COUNTY	MOUNT HOLLY	VT-103	VT-103	7.689	40566.24	NHS
RUTLAND COUNTY	WALLINGFORD	VT-103	VT-103	2.132	11256.96	NHS
RUTLAND COUNTY	SHREWSBURY	VT-103	VT-103	4.236	22366.08	NHS
RUTLAND COUNTY	CLARENDON	VT-103	VT-103	1.979	10449.12	NHS
RUTLAND COUNTY	CLARENDON	VT-103	VT-103	0.127	670.56	NHS, RAMP
			VT-103 TOTAL	22.276	117617.28	
WINDHAM COUNTY	WHITINGHAM	VT-112	VT-112	1.604	8469.12	
			VT-112 TOTAL	1.604	8469.12	
RUTLAND COUNTY	PAWLET	VT-133	VT-133	5.325	28116.00	
RUTLAND COUNTY	DANBY	VT-133	VT-133	0.024	126.72	
RUTLAND COUNTY	TINMOUTH	VT-133	VT-133	3.431	18115.68	
RUTLAND COUNTY	MIDDLETOWN SPRINGS	VT-133	VT-133	5.760	30412.80	
RUTLAND COUNTY	IRA	VT-133	VT-133	4.780	25238.40	
RUTLAND COUNTY	CLARENDON	VT-133	VT-133	1.434	7571.52	
RUTLAND COUNTY	WEST RUTLAND	TH-2	VT-133	1.044	5512.32	
RUTLAND COUNTY	WEST RUTLAND	VT-133	VT-133	0.710	3748.80	
			VT-133 TOTAL	22.508	118842.24	
RUTLAND COUNTY	WALLINGFORD	VT-140	VT-140	6.343	33491.04	
RUTLAND COUNTY	MOUNT HOLLY	VT-140	VT-140	0.152	802.56	
			VT-140 TOTAL	6.495	34293.60	
RUTLAND COUNTY	PAWLET	VT-149	VT-149	1.302	6874.56	
			VT-149 TOTAL	1.302	6874.56	
RUTLAND COUNTY	MOUNT HOLLY	VT-155	VT-155	7.603	40143.84	
RUTLAND COUNTY	WALLINGFORD	VT-155	VT-155	0.412	2175.36	
			VT-155 TOTAL	8.015	42319.20	

COUNTY	TOWN NAME	ROUTE NAME	HIGHWAY SIGN	SEGMENT LENGTH (MI)	SEGMENT LENGTH (FT)	COMMENTS
BENNINGTON COUNTY	BENNINGTON	VT-279	VT-279	4.509	23807.52	NHS
BENNINGTON COUNTY	BENNINGTON	VT-279	VT-279	1.545	8157.60	
BENNINGTON COUNTY	BENNINGTON	VT-279	VT-279	1.705	9002.40	NHS, DIVIDED
BENNINGTON COUNTY	BENNINGTON	VT-279	VT-279	0.306	1615.68	NHS, EB OFF RAMP TO VT 67A
BENNINGTON COUNTY	BENNINGTON	VT-279	VT-279	0.260	1372.80	NHS, WB ON RAMP FROM VT 67A
BENNINGTON COUNTY	BENNINGTON	VT-279	VT-279	0.301	1589.28	NHS, WB OFF RAMP TO VT 67A
BENNINGTON COUNTY	BENNINGTON	VT-279	VT-279	0.374	1974.72	NHS, EB ON RAMP FROM VT 67A
BENNINGTON COUNTY	BENNINGTON	VT-279	VT-279	0.396	2090.88	NHS, RAMP
BENNINGTON COUNTY	BENNINGTON	VT-279	VT-279	0.048	253.44	NHS, RAMP
BENNINGTON COUNTY	BENNINGTON	VT-279	VT-279	1.148	6061.44	NHS, FROM VT 279 WB TO US 7 SB
BENNINGTON COUNTY	BENNINGTON	VT-279	VT-279	0.081	427.68	NHS, FROM VT 279 EB TO PARKING LOT
BENNINGTON COUNTY	BENNINGTON	VT-279	VT-279	0.098	517.44	NHS, FROM VT 279 WB TO PARKING LOT
BENNINGTON COUNTY	BENNINGTON	VT-279	VT-279	0.930	4910.40	NHS, PERIMETER ROAD
BENNINGTON COUNTY	BENNINGTON	VT-279	VT-279	0.075	396.00	NHS, FROM PARKING LOT TO VT 289 WB EXIT TO US 7 SOUTH
BENNINGTON COUNTY	BENNINGTON	VT-279	VT-279	0.215	1135.20	NHS, FROM PARKING LOT TO VT 279 WB
BENNINGTON COUNTY	BENNINGTON	VT-279	VT-279	0.225	1188.00	NHS, FROM PARKING LOT TO VT 279 EB
BENNINGTON COUNTY	BENNINGTON	VT-279	VT-279	0.279	1473.12	NHS, FROM US 7 NB TO VT 279 EB
BENNINGTON COUNTY	BENNINGTON	VT-279	VT-279	0.402	2122.56	NHS, EXT TO VT 9
			VT-279 TOTAL	12.897	68096.16	
BENNINGTON COUNTY	ARLINGTON	VT-313	VT-313	7.908	41754.24	
BENNINGTON COUNTY	SUNDERLAND	VT-313	VT-313	0.717	3785.76	
			VT-313 TOTAL	8.625	45540.00	
BENNINGTON COUNTY	POWNAI	VT-346	VT-346	4.628	24435.84	
			VT-346 TOTAL	4.628	24435.84	

NSH = NAMED STATE HIGHWAY
NHS = NATIONAL HIGHWAY SYSTEM.

SIX INCH = ROUTES THAT SHOULD BE MARKED AS SIX INCH LINES. THESE ARE ESTIMATED ROUTES. MARKINGS SHALL MATCH EXISTING OR AS DIRECTED BY THE ENGINEER.

NIGHT WORK = AREAS THAT ARE DESIGNATED FOR NIGHT WORK.

DIVIDED = AREAS THAT HAVE DIVIDED SEGMENTS. EACH SEGMENT IS MEASURED IN ONE DIRECTION.

ROUNDBABOUT = ROUTES THAT HAVE ROUNDBABOUTS.

SEGMENT LENGTH IS PROVIDED FOR INFORMATIONAL PURPOSES ONLY. THESE LENGTHS REPRESENT ROAD CENTERLINE LENGTH AND SHALL NOT BE USED FOR MEASURING QUANTITIES FOR PAYMENT.

PROJECT NAME: STATEWIDE SOUTHWEST REGION
PROJECT NUMBER: STPG MARK(313)

FILE NAME: i17+065roadlst.dgn PLOT DATE: 2/14/2018
PROJECT LEADER: P. COBURN DRAWN BY: M. BOGACZYK
DESIGNED BY: M. BOGACZYK CHECKED BY: P. COBURN
ROAD QUANTITY SHEET 3 SHEET 7 OF 17

ROUTE	LENGTH (MI)
BR US-BR4	5.284
BENNINGTON STATE HIGHWAY	0.472
CASTLETON STATE HIGHWAY	0.398
CLARENDON STATE HIGHWAY	0.914
FAIR HAVEN STATE HIGHWAY	0.621
WINHALL STATE HIGHWAY	0.402
US-7	105.082
VT-3	7.912
VT-4A	14.163
VT-7A	28.443
VT-7B	5.180
VT-8	5.210
VT-9	29.142
VT-11	12.846
VT-22A	20.547
VT-30	65.596
VT-31	5.535
VT-67	4.254
VT-67A	2.936
VT-73	19.444
VT-100	65.859
VT-100A	4.762
VT-103	22.276
VT-112	1.604
VT-133	22.508
VT-140	6.495
VT-149	1.302
VT-155	8.015
VT-279	12.897
VT-313	8.625
VT-346	4.628
SOUTHWEST TOTAL	493.352

NSH = NAMED STATE HIGHWAY
NHS = NATIONAL HIGHWAY SYSTEM.

SIX INCH = ROUTES THAT SHOULD BE MARKED AS SIX INCH LINES. THESE ARE ESTIMATED ROUTES. MARKINGS SHALL MATCH EXISTING OR AS DIRECTED BY THE ENGINEER.

NIGHT WORK = AREAS THAT ARE DESIGNATED FOR NIGHT WORK.

DIVIDED = AREAS THAT HAVE DIVIDED SEGMENTS. EACH SEGMENT IS MEASURED IN ONE DIRECTION.

ROUNDAABOUT = ROUTES THAT HAVE ROUNDAABOUTS.

SEGMENT LENGTH IS PROVIDED FOR INFORMATIONAL PURPOSES ONLY. THESE LENGTHS REPRESENT ROAD CENTERLINE LENGTH AND SHALL NOT BE USED FOR MEASURING QUANTITIES FOR PAYMENT.

PROJECT NAME: STATEWIDE SOUTHWEST REGION
PROJECT NUMBER: STPG MARK(313)

FILE NAME: t17+065roadlst.dgn PLOT DATE: 2/14/2018
PROJECT LEADER: P. COBURN DRAWN BY: M. BOGACZYK
DESIGNED BY: M. BOGACZYK CHECKED BY: P. COBURN
ROAD SUMMARY SHEET SHEET 8 OF 17

SUMMARY BY COUNTY OF CLASS 2 TOWN HIGHWAYS

COUNTY	TOWN	TH NUMBER	TH NAME	MILEAGE	LINEAR FT
ADDISON COUNTY	GOSHEN	TH-1	CAPEN HILL RD	0.830	4,382.40
ADDISON COUNTY	GOSHEN	TH-1	HATHAWAY RD	0.310	1,636.80
ADDISON COUNTY	GOSHEN	TH-1	TOWN HILL RD	0.650	3,432.00
ADDISON COUNTY	LEICESTER	TH-1	LEICESTER-WHITING RD	3.160	16,684.80
ADDISON COUNTY	LEICESTER	TH-2	FERN LAKE RD	2.350	12,408.00
ADDISON COUNTY	LEICESTER	TH-3	SWINGTON HILL RD	1.000	5,280.00
ADDISON COUNTY	LEICESTER	TH-4	LAKE DUNMORE RD	3.830	20,222.40
ADDISON COUNTY	LEICESTER	TH-5	MAPLE RUN RD	0.760	4,012.80
ADDISON COUNTY	ORWELL	TH-1	NORTH ORWELL RD	3.550	18,744.00
ADDISON COUNTY	ORWELL	TH-2	CHIPMANS POINT RD	0.750	3,960.00
ADDISON COUNTY	ORWELL	TH-2	MOUNT INDEPENDENCE RD	3.000	15,840.00
ADDISON COUNTY	ORWELL	TH-2	VT ROUTE 73	0.350	1,848.00
ADDISON COUNTY	ORWELL	TH-3	VT ROUTE 73	4.600	24,288.00
ADDISON COUNTY	ORWELL	TH-4	MOUNT INDEPENDENCE RD	1.537	8,115.36
ADDISON COUNTY	WHITING	TH-1	LEICESTER-WHITING RD	2.370	12,513.60
ADDISON COUNTY	WHITING	TH-1	SHOREHAM WHITING RD	1.270	6,705.60
ADDISON COUNTY	WHITING	TH-2	SAWYER-NEEDHAM RD	0.341	1,800.48
ADDISON COUNTY TOTAL				30.658	161,874.24

SEGMENT LENGTH IS PROVIDED FOR INFORMATIONAL PURPOSES ONLY. THESE LENGTHS REPRESENT ROAD CENTERLINE LENGTH AND SHALL NOT BE USED FOR MEASURING QUANTITIES FOR PAYMENT.

PROJECT NAME:	STATEWIDE SOUTHWEST REGION
PROJECT NUMBER:	STPG MARK(313)
FILE NAME: +17+065 Class 2.dgn	PLOT DATE: 2/14/2018
PROJECT LEADER: P. COBURN	DRAWN BY: M. BOGACZYK
DESIGNED BY: M. BOGACZYK	CHECKED BY: P. COBURN
CLASS 2 TOWN HIGHWAY QUANTITY SHEET 1 SHEET 9 OF 17	

SUMMARY BY COUNTY OF CLASS 2 TOWN HIGHWAYS

COUNTY	TOWN	TH NUMBER	TH NAME	MILEAGE	LINEAR FT
BENNINGTON COUNTY	ARLINGTON	TH-1	EAST ARLINGTON RD	1.540	8,131.20
BENNINGTON COUNTY	ARLINGTON	TH-3	SANDGATE RD	1.250	6,600.00
BENNINGTON COUNTY	ARLINGTON	TH-4	WARM BROOK RD	1.650	8,712.00
BENNINGTON COUNTY	ARLINGTON	TH-5	MAPLE HILL RD	0.075	396.00
BENNINGTON COUNTY	ARLINGTON	TH-6	OLD MILL RD	0.390	2,059.20
BENNINGTON COUNTY	BENNINGTON	TH-2	MONUMENT AVE	0.812	4,287.36
BENNINGTON COUNTY	BENNINGTON	TH-2	MONUMENT CIR	0.281	1,483.68
BENNINGTON COUNTY	BENNINGTON	TH-3	BANK ST	0.080	422.40
BENNINGTON COUNTY	BENNINGTON	TH-3	BEECH ST	0.687	3,627.36
BENNINGTON COUNTY	BENNINGTON	TH-3	ELM ST	0.143	755.04
BENNINGTON COUNTY	BENNINGTON	TH-3	S STREAM RD	2.500	13,200.00
BENNINGTON COUNTY	BENNINGTON	TH-4	ELM ST	0.660	3,484.80
BENNINGTON COUNTY	BENNINGTON	TH-5	COUNTY ST	0.200	1,056.00
BENNINGTON COUNTY	BENNINGTON	TH-5	PARK ST	0.660	3,484.80
BENNINGTON COUNTY	BENNINGTON	TH-5	EAST RD	2.730	14,414.40
BENNINGTON COUNTY	BENNINGTON	TH-6	BRANCH ST	0.190	1,003.20
BENNINGTON COUNTY	BENNINGTON	TH-6	COUNTY ST	0.590	3,115.20
BENNINGTON COUNTY	BENNINGTON	TH-6	GAGE ST	0.340	1,795.20
BENNINGTON COUNTY	BENNINGTON	TH-7	BENMONT AVE	0.790	4,171.20
BENNINGTON COUNTY	BENNINGTON	TH-7	NORTHSIDE DR	0.210	1,108.80
BENNINGTON COUNTY	BENNINGTON	TH-8	CARPENTER HILL RD	0.011	58.08
BENNINGTON COUNTY	BENNINGTON	TH-8	MONUMENT AVE	1.900	10,032.00
BENNINGTON COUNTY	BENNINGTON	TH-9	BERARD ST	0.060	316.80
BENNINGTON COUNTY	DORSET	TH-1	DORSET WEST RD	4.600	24,288.00
BENNINGTON COUNTY	DORSET	TH-2	CHURCH ST	0.720	3,801.60
BENNINGTON COUNTY	DORSET	TH-3	MORSE HILL RD	3.700	19,536.00
BENNINGTON COUNTY	DORSET	TH-4	BENEDICT RD	0.460	2,428.80
BENNINGTON COUNTY	DORSET	TH-5	MAD TOM RD	0.894	4,720.32
BENNINGTON COUNTY	LANDGROVE	TH-3	WINHALL HOLLOW RD	0.100	528.00
BENNINGTON COUNTY	MANCHESTER	TH-2	WEST RD	1.270	6,705.60
BENNINGTON COUNTY	MANCHESTER	TH-3	RIVER RD	1.180	6,230.40
BENNINGTON COUNTY	MANCHESTER	TH-3	WEST RD	2.170	11,457.60
BENNINGTON COUNTY	MANCHESTER	TH-4	UNION ST FRK	0.040	211.20
BENNINGTON COUNTY	MANCHESTER	TH-4	UNION ST	0.900	4,752.00
BENNINGTON COUNTY	MANCHESTER	TH-4	RIVER RD	1.980	10,454.40
BENNINGTON COUNTY	MANCHESTER	TH-5	CENTER HILL	0.400	2,112.00
BENNINGTON COUNTY	MANCHESTER	TH-6	RICHVILLE RD	3.870	20,433.60
BENNINGTON COUNTY	MANCHESTER	TH-7	NORTH RD	1.750	9,240.00
BENNINGTON COUNTY	MANCHESTER	TH-8	BARNUMVILLE RD	1.150	6,072.00
BENNINGTON COUNTY	MANCHESTER	TH-8	BEECH ST	0.150	792.00
BENNINGTON COUNTY	MANCHESTER	TH-8	HIGH MEADOW WAY	0.800	4,224.00
BENNINGTON COUNTY	MANCHESTER	TH-9	UNION ST	0.070	369.60
BENNINGTON COUNTY	MANCHESTER	TH-10	BARNUMVILLE RD	1.520	8,025.60
BENNINGTON COUNTY	MANCHESTER	TH-11	E MANCHESTER RD	1.790	9,451.20
BENNINGTON COUNTY	PERU	TH-1	HAPGOOD POND RD	3.240	17,107.20
BENNINGTON COUNTY	PERU	TH-2	MAIN ST	0.640	3,379.20
BENNINGTON COUNTY SHEET 1 TOTAL				51.143	270,035.04

SEGMENT LENGTH IS PROVIDED FOR INFORMATIONAL PURPOSES ONLY. THESE LENGTHS REPRESENT ROAD CENTERLINE LENGTH AND SHALL NOT BE USED FOR MEASURING QUANTITIES FOR PAYMENT.

PROJECT NAME: STATEWIDE SOUTHWEST REGION
PROJECT NUMBER: STPG MARK(313)

FILE NAME: +17+065 Class 2.dgn PLOT DATE: 2/14/2018
PROJECT LEADER: P. COBURN DRAWN BY: M. BOGACZYK
DESIGNED BY: M. BOGACZYK CHECKED BY: P. COBURN
CLASS 2 TOWN HIGHWAY QUANTITY SHEET 2 SHEET 10 OF 17

SUMMARY BY COUNTY OF CLASS 2 TOWN HIGHWAYS

COUNTY	TOWN	TH NUMBER	TH NAME	MILEAGE	LINEAR FT
BENNINGTON COUNTY	PERU	TH-3	SOUTH RD	0.960	5,068.80
BENNINGTON COUNTY	POWNAL	TH-1	CHURCH ST	0.300	1,584.00
BENNINGTON COUNTY	POWNAL	TH-2	N POWNAL RD	2.890	15,259.20
BENNINGTON COUNTY	POWNAL	TH-3	BARBER POND RD	2.010	10,612.80
BENNINGTON COUNTY	POWNAL	TH-3	S STREAM RD	3.240	17,107.20
BENNINGTON COUNTY	POWNAL	TH-4	JACKSON CROSS RD	1.210	6,388.80
BENNINGTON COUNTY	POWNAL	TH-4	MAPLE GROVE RD	2.200	11,616.00
BENNINGTON COUNTY	READSBORO	TH-2	TUNNEL ST	1.600	8,448.00
BENNINGTON COUNTY	READSBORO	TH-3	BRANCH HILL RD	0.250	1,320.00
BENNINGTON COUNTY	READSBORO	TH-4	DEPOT ST	0.120	633.60
BENNINGTON COUNTY	RUPERT	TH-1	ROUTE 153	7.080	37,382.40
BENNINGTON COUNTY	RUPERT	TH-2	DORSET WEST RD	0.270	1,425.60
BENNINGTON COUNTY	RUPERT	TH-2	ROUTE 315	5.830	30,782.40
BENNINGTON COUNTY	SANDGATE	TH-1	SANDGATE RD	1.850	9,768.00
BENNINGTON COUNTY	SANDGATE	TH-2	SANDGATE RD	1.730	9,134.40
BENNINGTON COUNTY	SANDGATE	TH-2	W SANDGATE RD	1.361	7,186.08
BENNINGTON COUNTY	SHAFTSBURY	TH-1	OLD DEPOT RD	0.466	2,460.48
BENNINGTON COUNTY	SHAFTSBURY	TH-2	CHURCH ST	0.270	1,425.60
BENNINGTON COUNTY	SHAFTSBURY	TH-3	BANK ST	0.370	1,953.60
BENNINGTON COUNTY	SHAFTSBURY	TH-3	HAWKS AV	0.250	1,320.00
BENNINGTON COUNTY	SHAFTSBURY	TH-3	WHITE CREEK RD	2.220	11,721.60
BENNINGTON COUNTY	SHAFTSBURY	TH-4	CLEVELAND AVE	0.470	2,481.60
BENNINGTON COUNTY	SHAFTSBURY	TH-5	EAST RD	3.490	18,427.20
BENNINGTON COUNTY	SHAFTSBURY	TH-6	BUCK HILL RD	2.000	10,560.00
BENNINGTON COUNTY	SHAFTSBURY	TH-7	AIRPORT RD	1.230	6,494.40
BENNINGTON COUNTY	STAMFORD	TH-1	CLOUGH RD	0.230	1,214.40
BENNINGTON COUNTY	STAMFORD	TH-1	EAST RD	1.800	9,504.00
BENNINGTON COUNTY	STAMFORD	TH-2	JEPSON RD	0.204	1,077.12
BENNINGTON COUNTY	SUNDERLAND	TH-1	SUNDERLAND HILL RD	1.750	9,240.00
BENNINGTON COUNTY	SUNDERLAND	TH-2	HILL FARM RD	0.550	2,904.00
BENNINGTON COUNTY	SUNDERLAND	TH-2	SUNDERLAND HILL RD	3.070	16,209.60
BENNINGTON COUNTY	SUNDERLAND	TH-3	KANSAS RD	1.030	5,438.40
BENNINGTON COUNTY	SUNDERLAND	TH-3	KELLEY STAND RD	0.050	264.00
BENNINGTON COUNTY	WINHALL	TH-1	STRATTON MOUNTAIN ACCESS RD	3.563	18,812.64
BENNINGTON COUNTY	WINHALL	TH-2	WINHALL HOLLOW RD	5.500	29,040.00
BENNINGTON COUNTY	WINHALL	TH-3	WINHALL HOLLOW RD	0.110	580.80
BENNINGTON COUNTY	WINHALL	TH-4	OLD TOWN RD	1.370	7,233.60
BENNINGTON COUNTY SHEET 2 TOTAL				62.894	332,080.32
BENNINGTON COUNTY SHEET 1 TOTAL				51.143	270,035.04
BENNINGTON COUNTY SHEET 2 TOTAL				62.894	332,080.32
BENNINGTON COUNTY TOTAL				114.037	602,115.36

DO NOT STRIPE IN STAMFORD ON THE TOWN HIGHWAYS, AS PER THEIR WRITTEN REQUEST FROM MARCH 19, 2018, THE TOWN DOES NOT WANT THESE ROADS STRIPED DUE TO THEIR NARROW WIDTHS.

SEGMENT LENGTH IS PROVIDED FOR INFORMATIONAL PURPOSES ONLY. THESE LENGTHS REPRESENT ROAD CENTERLINE LENGTH AND SHALL NOT BE USED FOR MEASURING QUANTITIES FOR PAYMENT.

PROJECT NAME:	STATEWIDE SOUTHWEST REGION
PROJECT NUMBER:	STPG MARK(313)
FILE NAME: +17+065 Class 2.dgn	PLOT DATE: 2/14/2018
PROJECT LEADER: P. COBURN	DRAWN BY: M. BOGACZYK
DESIGNED BY: M. BOGACZYK	CHECKED BY: P. COBURN
CLASS 2 TOWN HIGHWAY QUANTITY SHEET 3 SHEET II OF 17	

SUMMARY BY COUNTY OF CLASS 2 TOWN HIGHWAYS

COUNTY	TOWN	TH NUMBER	TH NAME	MILEAGE	LINEAR FT
RUTLAND COUNTY	BENSON	TH-1	STAGE RD	2.566	13,548.48
RUTLAND COUNTY	BENSON	TH-1	HULETT HILL RD	0.700	3,696.00
RUTLAND COUNTY	BENSON	TH-2	ROUTE 144	4.240	22,387.20
RUTLAND COUNTY	BENSON	TH-3	LAKE RD	3.836	20,254.08
RUTLAND COUNTY	BENSON	TH-4	SUNSET LAKE RD	0.630	3,326.40
RUTLAND COUNTY	BRANDON	TH-4	PEARL ST	1.510	7,972.80
RUTLAND COUNTY	BRANDON	TH-4	TOWN HWY 79	0.050	264.00
RUTLAND COUNTY	BRANDON	TH-5	UNION ST	2.890	15,259.20
RUTLAND COUNTY	BRANDON	TH-5	CARVER ST	0.040	211.20
RUTLAND COUNTY	BRANDON	TH-5	FLORENCE RD	0.690	3,643.20
RUTLAND COUNTY	BRANDON	TH-6	NORTH ST	1.330	7,022.40
RUTLAND COUNTY	BRANDON	TH-7	ARNOLD DISTRICT RD	2.470	13,041.60
RUTLAND COUNTY	BRANDON	TH-8	MCCONNELL RD	3.300	17,424.00
RUTLAND COUNTY	BRANDON	TH-9	HIGH POND RD	1.370	7,233.60
RUTLAND COUNTY	CASTLETON	TH-2	CREEK RD	2.479	13,089.12
RUTLAND COUNTY	CASTLETON	TH-2	W CASTLETON RD	2.341	12,360.48
RUTLAND COUNTY	CASTLETON	TH-3	E HUBBARDTON RD	4.970	26,241.60
RUTLAND COUNTY	CASTLETON	TH-4	SOUTH ST	2.650	13,992.00
RUTLAND COUNTY	CASTLETON	TH-5	NORTH RD	4.120	21,753.60
RUTLAND COUNTY	CASTLETON	TH-6	BLISSVILLE RD	1.300	6,864.00
RUTLAND COUNTY	CHITTENDEN	TH-1	CHITTENDEN RD	2.230	11,774.40
RUTLAND COUNTY	CHITTENDEN	TH-1	DAM RD	2.160	11,404.80
RUTLAND COUNTY	CHITTENDEN	TH-2	POWERHOUSE RD	1.430	7,550.40
RUTLAND COUNTY	CHITTENDEN	TH-2	FURNACE BROOK RD	0.740	3,907.20
RUTLAND COUNTY	CHITTENDEN	TH-2	HOLDEN RD	2.380	12,566.40
RUTLAND COUNTY	CHITTENDEN	TH-3	MEADOWLAKE DR	0.040	211.20
RUTLAND COUNTY	CHITTENDEN	TH-4	MOUNTAIN TOP RD	1.800	9,504.00
RUTLAND COUNTY	CLARENDON	TH-1	MIDDLE RD	4.110	21,700.80
RUTLAND COUNTY	CLARENDON	TH-2	CREEK RD	4.666	24,636.48
RUTLAND COUNTY	CLARENDON	TH-3	WALKER MOUNTAIN RD	6.210	32,788.80
RUTLAND COUNTY	CLARENDON	TH-4	COLD RIVER RD	0.950	5,016.00
RUTLAND COUNTY	CLARENDON	TH-4	N SHREWSBURY RD	0.990	5,227.20
RUTLAND COUNTY	CLARENDON	TH-6	COLD RIVER RD	0.540	2,851.20
RUTLAND COUNTY	CLARENDON	TH-7	AIRPORT RD	0.740	3,907.20
RUTLAND COUNTY	CLARENDON	TH-8	E CLARENDON RD	3.260	17,212.80
RUTLAND COUNTY	CLARENDON	TH-9	FORMER VT ROUTE 7B N EXT	0.082	432.96
RUTLAND COUNTY	CLARENDON	TH-9	FORMER VT ROUTE 7B N EXT	0.030	158.40
RUTLAND COUNTY	CLARENDON	TH-9	FORMER VT ROUTE 7B N	0.698	3,685.44
RUTLAND COUNTY	CLARENDON	TH-9	FORMER VT ROUTE 7B N EXT FRK	0.030	158.40
RUTLAND COUNTY	DANBY	TH-1	BROOK RD	4.140	21,859.20
RUTLAND COUNTY	DANBY	TH-1	DANBY-PAWLET RD	4.230	22,334.40
RUTLAND COUNTY	DANBY	TH-1	MOUNT TABOR AVE	0.100	528.00
RUTLAND COUNTY	DANBY	TH-1	S MAIN ST	0.020	105.60
RUTLAND COUNTY	DANBY	TH-2	TINMOUTH RD	3.230	17,054.40
RUTLAND COUNTY	DANBY	TH-3	SCOTTSVILLE RD	0.749	3,954.72
RUTLAND COUNTY SHEET 1 TOTAL				89.037	470,115.36

SEGMENT LENGTH IS PROVIDED FOR INFORMATIONAL PURPOSES ONLY. THESE LENGTHS REPRESENT ROAD CENTERLINE LENGTH AND SHALL NOT BE USED FOR MEASURING QUANTITIES FOR PAYMENT.

PROJECT NAME: STATEWIDE SOUTHWEST REGION
PROJECT NUMBER: STPG MARK(313)

FILE NAME: +17+065 Class 2.dgn PLOT DATE: 2/14/2018
PROJECT LEADER: P. COBURN DRAWN BY: M. BOGACZYK
DESIGNED BY: M. BOGACZYK CHECKED BY: P. COBURN
CLASS 2 TOWN HIGHWAY QUANTITY SHEET 4 SHEET 12 OF 17

SUMMARY BY COUNTY OF CLASS 2 TOWN HIGHWAYS

COUNTY	TOWN	TH NUMBER	TH NAME	MILEAGE	LINEAR FT
RUTLAND COUNTY	FAIR HAVEN	TH-4	AIRPORT RD	0.020	105.60
RUTLAND COUNTY	FAIR HAVEN	TH-4	FOURTH ST	0.620	3,273.60
RUTLAND COUNTY	FAIR HAVEN	TH-5	SCOTCH HILL RD	3.410	18,004.80
RUTLAND COUNTY	FAIR HAVEN	TH-6	WEST ST	1.270	6,705.60
RUTLAND COUNTY	FAIR HAVEN	TH-7	BOLGER RD	1.270	6,705.60
RUTLAND COUNTY	FAIR HAVEN	TH-9	SWAMP RD	1.570	8,289.60
RUTLAND COUNTY	HUBBARDTON	TH-1	HORTONIA RD	4.000	21,120.00
RUTLAND COUNTY	HUBBARDTON	TH-1	ROUTE 144	0.400	2,112.00
RUTLAND COUNTY	HUBBARDTON	TH-2	MONUMENT HILL RD	7.110	37,540.80
RUTLAND COUNTY	HUBBARDTON	TH-3	ROUTE 144	0.520	2,745.60
RUTLAND COUNTY	HUBBARDTON	TH-4	HIGH POND RD	0.198	1,045.44
RUTLAND COUNTY	KILLINGTON	TH-1	RIVER RD	1.362	7,191.36
RUTLAND COUNTY	KILLINGTON	TH-1	RIVER RD FRK	0.040	211.20
RUTLAND COUNTY	KILLINGTON	TH-2	KILLINGTON RD	2.970	15,681.60
RUTLAND COUNTY	KILLINGTON	TH-3	W HILL RD	0.720	3,801.60
RUTLAND COUNTY	MENDON	TH-1	MEADOW LAKE DR	1.130	5,966.40
RUTLAND COUNTY	MENDON	TH-2	NOTCH RD	1.505	7,946.40
RUTLAND COUNTY	MENDON	TH-2	TOWN LINE RD	0.880	4,646.40
RUTLAND COUNTY	MENDON	TH-3	PARK LN	0.470	2,481.60
RUTLAND COUNTY	SPRINGS	TH-1	WEST ST	3.200	16,896.00
RUTLAND COUNTY	MOUNT HOLLY	TH-1	BELMONT RD	2.410	12,724.80
RUTLAND COUNTY	MOUNT HOLLY	TH-1	HORTONVILLE RD	3.280	17,318.40
RUTLAND COUNTY	MOUNT HOLLY	TH-1	TARBELLVILLE RD	1.090	5,755.20
RUTLAND COUNTY	MOUNT HOLLY	TH-2	CHURCH ST	0.170	897.60
RUTLAND COUNTY	MOUNT HOLLY	TH-2	HEALDVILLE RD	3.660	19,324.80
RUTLAND COUNTY	MOUNT TABOR	TH-1	BROOKLYN RD	0.790	4,171.20
RUTLAND COUNTY	MOUNT TABOR	TH-1	MOUNT TABOR AVE	0.060	316.80
RUTLAND COUNTY	MOUNT TABOR	TH-2	S END RD	1.169	6,172.32
RUTLAND COUNTY	PAWLET	TH-1	ROUTE 153	6.060	31,996.80
RUTLAND COUNTY	PAWLET	TH-2	BUTTONS FALLS RD	1.720	9,081.60
RUTLAND COUNTY	PAWLET	TH-3	RIVER RD	1.610	8,500.80
RUTLAND COUNTY	PAWLET	TH-4	DANBY PAWLET RD	1.660	8,764.80
RUTLAND COUNTY	PAWLET	TH-5	N PAWLET RD	1.760	9,292.80
RUTLAND COUNTY	PITTSFORD	TH-1	W CREEK RD	5.490	28,987.20
RUTLAND COUNTY	PITTSFORD	TH-2	KENDALL HILL RD	0.980	5,174.40
RUTLAND COUNTY	PITTSFORD	TH-3	FURNACE RD	2.800	14,784.00
RUTLAND COUNTY	PITTSFORD	TH-4	CHITTENDEN RD	0.600	3,168.00
RUTLAND COUNTY	PITTSFORD	TH-5	ARCH ST	0.900	4,752.00
RUTLAND COUNTY	PITTSFORD	TH-6	CORN HILL RD	2.100	11,088.00
RUTLAND COUNTY	PITTSFORD	TH-7	MEADOW LAKE DR	0.180	950.40
RUTLAND COUNTY	PITTSFORD	TH-8	WHIPPLE HOLLOW RD	4.020	21,225.60
RUTLAND COUNTY SHEET 2 TOTAL				75.174	396,918.72

SEGMENT LENGTH IS PROVIDED FOR INFORMATIONAL PURPOSES ONLY.
THESE LENGTHS REPRESENT ROAD CENTERLINE LENGTH AND SHALL
NOT BE USED FOR MEASURING QUANTITIES FOR PAYMENT.

PROJECT NAME: STATEWIDE SOUTHWEST REGION
PROJECT NUMBER: STPG MARK(313)

FILE NAME: +17+065 Class 2.dgn PLOT DATE: 2/14/2018
PROJECT LEADER: P. COBURN DRAWN BY: M. BOGACZYK
DESIGNED BY: M. BOGACZYK CHECKED BY: P. COBURN
CLASS 2 TOWN HIGHWAY QUANTITY SHEET 5 SHEET 13 OF 17

SUMMARY BY COUNTY OF CLASS 2 TOWN HIGHWAYS

COUNTY	TOWN	TH NUMBER	TH NAME	MILEAGE	LINEAR FT
RUTLAND COUNTY	POULTNEY	TH-2	E MAIN ST	1.140	6,019.20
RUTLAND COUNTY	POULTNEY	TH-2	ROUTE 140	3.380	17,846.40
RUTLAND COUNTY	POULTNEY	TH-3	COLLEGE ST N	0.410	2,164.80
RUTLAND COUNTY	POULTNEY	TH-3	MAIN ST	0.350	1,848.00
RUTLAND COUNTY	POULTNEY	TH-3	YORK ST	0.360	1,900.80
RUTLAND COUNTY	POULTNEY	TH-3	E MAIN ST	0.450	2,376.00
RUTLAND COUNTY	POULTNEY	TH-4	GRANVILLE ST	0.665	3,511.20
RUTLAND COUNTY	POULTNEY	TH-4	BENTLEY AVE	0.035	184.80
RUTLAND COUNTY	POULTNEY	TH-4	COLLEGE ST S	0.120	633.60
RUTLAND COUNTY	POULTNEY	TH-5	YORK ST EXT	3.160	16,684.80
RUTLAND COUNTY	POULTNEY	TH-5	YORK ST	0.370	1,953.60
RUTLAND COUNTY	POULTNEY	TH-6	DEPOT ST	0.110	580.80
RUTLAND COUNTY	POULTNEY	TH-6	ON THE GREEN	0.190	1,003.20
RUTLAND COUNTY	POULTNEY	TH-6	THRALL RD	1.380	7,286.40
RUTLAND COUNTY	POULTNEY	TH-7	BENTLEY AVE	0.390	2,059.20
RUTLAND COUNTY	POULTNEY	TH-7	SALTIS RD	0.910	4,804.80
RUTLAND COUNTY	POULTNEY	TH-8	BLISSVILLE RD	1.750	9,240.00
RUTLAND COUNTY	POULTNEY	TH-8	CHURCH ST	0.350	1,848.00
RUTLAND COUNTY	PROCTOR	TH-2	SCHOOL ST FRK	0.030	158.40
RUTLAND COUNTY	PROCTOR	TH-2	WEST ST	3.500	18,480.00
RUTLAND COUNTY	PROCTOR	TH-2	SCHOOL ST	0.110	580.80
RUTLAND COUNTY	PROCTOR	TH-2	FLORENCE RD	2.520	13,305.60
RUTLAND COUNTY	PROCTOR	TH-2	CROSS ST	0.140	739.20
RUTLAND COUNTY	PROCTOR	TH-2	NORTH ST	0.300	1,584.00
RUTLAND COUNTY	PROCTOR	TH-3	MAIN ST	0.440	2,323.20
RUTLAND COUNTY	PROCTOR	TH-3	MAIN ST FRK	0.030	158.40
RUTLAND COUNTY	RUTLAND CITY	TH-3	MERCHANTS ROW	0.170	897.60
RUTLAND COUNTY	RUTLAND CITY	TH-3	STRONGS AVE	0.610	3,220.80
RUTLAND COUNTY	RUTLAND CITY	TH-4	WEST ST	0.760	4,012.80
RUTLAND COUNTY	RUTLAND CITY	TH-5	FIELD AVE	0.530	2,798.40
RUTLAND COUNTY	RUTLAND CITY	TH-6	GROVE ST	1.470	7,761.60
RUTLAND COUNTY	RUTLAND CITY	TH-7	CRESCENT ST	0.910	4,804.80
RUTLAND COUNTY	RUTLAND CITY	TH-7	FAIRVIEW AVE	0.150	792.00
RUTLAND COUNTY	RUTLAND CITY	TH-7	PIERPOINT AVE	0.250	1,320.00
RUTLAND COUNTY	RUTLAND CITY	TH-8	MADISON ST	0.230	1,214.40
RUTLAND COUNTY	RUTLAND CITY	TH-8	RIVER ST	0.860	4,540.80
RUTLAND COUNTY	RUTLAND CITY	TH-9	ALLEN ST	0.770	4,065.60
RUTLAND COUNTY	RUTLAND CITY	TH-9	STRATTON RD	1.330	7,022.40
RUTLAND COUNTY	RUTLAND CITY	TH-10	DORR DR	1.540	8,131.20
RUTLAND COUNTY	RUTLAND CITY	TH-10	RIPLEY RD	0.200	1,056.00
RUTLAND COUNTY	RUTLAND CITY	TH-11	KILLINGTON AVE	1.370	7,233.60
RUTLAND COUNTY	RUTLAND CITY	TH-12	PARK ST	0.750	3,960.00
RUTLAND COUNTY	RUTLAND CITY	TH-13	FOREST ST	0.930	4,910.40
RUTLAND COUNTY SHEET 3 TOTAL				35.420	187,017.60

SEGMENT LENGTH IS PROVIDED FOR INFORMATIONAL PURPOSES ONLY.
THESE LENGTHS REPRESENT ROAD CENTERLINE LENGTH AND SHALL
NOT BE USED FOR MEASURING QUANTITIES FOR PAYMENT.

PROJECT NAME: STATEWIDE SOUTHWEST REGION
PROJECT NUMBER: STPG MARK(313)

FILE NAME: +17+065 Class 2.dgn PLOT DATE: 2/14/2018
PROJECT LEADER: P. COBURN DRAWN BY: M. BOGACZYK
DESIGNED BY: M. BOGACZYK CHECKED BY: P. COBURN
CLASS 2 TOWN HIGHWAY QUANTITY SHEET 6 SHEET 14 OF 17

SUMMARY BY COUNTY OF CLASS 2 TOWN HIGHWAYS

COUNTY	TOWN	TH NUMBER	TH NAME	MILEAGE	LINEAR FT
RUTLAND COUNTY	RUTLAND CITY	TH-13	PINE ST	0.140	739.20
RUTLAND COUNTY	RUTLAND CITY	TH-14	EAST ST	0.610	3,220.80
RUTLAND COUNTY	RUTLAND CITY	TH-14	JACKSON AVE	0.200	1,056.00
RUTLAND COUNTY	RUTLAND TOWN	TH-1	E PITTSFORD RD	3.230	17,054.40
RUTLAND COUNTY	RUTLAND TOWN	TH-2	CREEK RD	1.040	5,491.20
RUTLAND COUNTY	RUTLAND TOWN	TH-3	MIDDLE RD	0.320	1,689.60
RUTLAND COUNTY	RUTLAND TOWN	TH-4	N GROVE ST	2.750	14,520.00
RUTLAND COUNTY	RUTLAND TOWN	TH-5	COLD RIVER RD	1.780	9,398.40
RUTLAND COUNTY	RUTLAND TOWN	TH-6	W PROCTOR RD	0.880	4,646.40
RUTLAND COUNTY	RUTLAND TOWN	TH-7	MEADOW LAKE DR	0.430	2,270.40
RUTLAND COUNTY	RUTLAND TOWN	TH-8	TOWN LINE RD	0.920	4,857.60
RUTLAND COUNTY	RUTLAND TOWN	TH-9	PARK LN	0.480	2,534.40
RUTLAND COUNTY	RUTLAND TOWN	TH-9	POST RD	1.380	7,286.40
RUTLAND COUNTY	RUTLAND TOWN	TH-9	POST RD EXT	0.300	1,584.00
RUTLAND COUNTY	RUTLAND TOWN	TH-10	KILLINGTON AVE	0.470	2,481.60
RUTLAND COUNTY	RUTLAND TOWN	TH-11	MCKINLEY AVE	1.100	5,808.00
RUTLAND COUNTY	SHREWSBURY	TH-1	COLD RIVER RD	6.690	35,323.20
RUTLAND COUNTY	SHREWSBURY	TH-2	TOWN HILL RD	1.740	9,187.20
RUTLAND COUNTY	SHREWSBURY	TH-2	NORTHAM RD	2.640	13,939.20
RUTLAND COUNTY	SHREWSBURY	TH-2	LINCOLN HILL RD	0.340	1,795.20
RUTLAND COUNTY	SHREWSBURY	TH-3	MOUNT HOLLY RD	0.800	4,224.00
RUTLAND COUNTY	SHREWSBURY	TH-3	EASTHAM RD	1.290	6,811.20
RUTLAND COUNTY	SHREWSBURY	TH-4	LINCOLN HILL RD	2.230	11,774.40
RUTLAND COUNTY	SUDBURY	TH-1	BURR POND RD	3.460	18,268.80
RUTLAND COUNTY	SUDBURY	TH-2	LAKE HORTONIA RD	1.750	9,240.00
RUTLAND COUNTY	SUDBURY	TH-4	SAWYER NEEDHAM RD	1.300	6,864.00
RUTLAND COUNTY	TINMOUTH	TH-1	MOUNTAIN VIEW RD FRK	0.020	105.60
RUTLAND COUNTY	TINMOUTH	TH-1	ROUTE 140	5.930	31,310.40
RUTLAND COUNTY	TINMOUTH	TH-2	EAST RD	0.020	105.60
RUTLAND COUNTY	TINMOUTH	TH-2	MOUNTAIN VIEW RD	3.530	18,638.40
RUTLAND COUNTY	TINMOUTH	TH-3	EAST RD	3.440	18,163.20
RUTLAND COUNTY	TINMOUTH	TH-5	E WELLS RD	0.060	316.80
RUTLAND COUNTY	WALLINGFORD	TH-1	DEPOT ST	0.160	844.80
RUTLAND COUNTY	WALLINGFORD	TH-1	ROUTE 140 W	2.260	11,932.80
RUTLAND COUNTY	WALLINGFORD	TH-2	CREEK RD	1.340	7,075.20
RUTLAND COUNTY	WALLINGFORD	TH-2	MAPLE ST	0.130	686.40
RUTLAND COUNTY	WELLS	TH-1	E WELLS RD	4.590	24,235.20
RUTLAND COUNTY	WELLS	TH-2	W LAKE RD	1.380	7,286.40
RUTLAND COUNTY	WELLS	TH-2	BULL FROG HOLLOW RD	0.340	1,795.20
RUTLAND COUNTY	WELLS	TH-2	NORTH ST	1.940	10,243.20
RUTLAND COUNTY	WELLS	TH-2	SOUTH ST	0.750	3,960.00
RUTLAND COUNTY	WELLS	TH-2	TH 2	0.020	105.60
RUTLAND COUNTY	WELLS	TH-3	W LAKE RD	0.260	1,372.80
RUTLAND COUNTY SHEET 4 TOTAL				64.440	340,243.20

SEGMENT LENGTH IS PROVIDED FOR INFORMATIONAL PURPOSES ONLY. THESE LENGTHS REPRESENT ROAD CENTERLINE LENGTH AND SHALL NOT BE USED FOR MEASURING QUANTITIES FOR PAYMENT.

PROJECT NAME: STATEWIDE SOUTHWEST REGION
PROJECT NUMBER: STPG MARK(313)

FILE NAME: +17+065 Class 2.dgn PLOT DATE: 2/14/2018
PROJECT LEADER: P. COBURN DRAWN BY: M. BOGACZYK
DESIGNED BY: M. BOGACZYK CHECKED BY: P. COBURN
CLASS 2 TOWN HIGHWAY QUANTITY SHEET 7 SHEET 15 OF 17

SUMMARY BY COUNTY OF CLASS 2 TOWN HIGHWAYS

COUNTY	TOWN	TH NUMBER	TH NAME	MILEAGE	LINEAR FT
RUTLAND COUNTY	WEST HAVEN	TH-1	MAIN RD	2.030	10,718.40
RUTLAND COUNTY	WEST HAVEN	TH-1	STAGE RD	0.172	908.16
RUTLAND COUNTY	WEST HAVEN	TH-2	MAIN RD	3.910	20,644.80
RUTLAND COUNTY	WEST HAVEN	TH-3	BOOK RD	2.180	11,510.40
RUTLAND COUNTY	WEST RUTLAND	TH-3	MARBLE ST	2.700	14,256.00
RUTLAND COUNTY	WEST RUTLAND	TH-3	PLEASANT ST	0.410	2,164.80
RUTLAND COUNTY	WEST RUTLAND	TH-3	WHIPPLE HOLLOW RD	2.420	12,777.60
RUTLAND COUNTY	WEST RUTLAND	TH-4	WHIPPLE HOLLOW RD	1.950	10,296.00
RUTLAND COUNTY SHEET 5 TOTAL				15.772	83,276.16
RUTLAND COUNTY SHEET 1 TOTAL				89.037	470,115.36
RUTLAND COUNTY SHEET 2 TOTAL				75.174	396,918.72
RUTLAND COUNTY SHEET 3 TOTAL				35.420	187,017.60
RUTLAND COUNTY SHEET 4 TOTAL				64.440	340,243.20
RUTLAND COUNTY SHEET 5 TOTAL				15.772	83,276.16
			RUTLAND COUNTY TOTAL	279.843	1,477,571.04

SEGMENT LENGTH IS PROVIDED FOR INFORMATIONAL PURPOSES ONLY. THESE LENGTHS REPRESENT ROAD CENTERLINE LENGTH AND SHALL NOT BE USED FOR MEASURING QUANTITIES FOR PAYMENT.

PROJECT NAME: STATEWIDE SOUTHWEST REGION	
PROJECT NUMBER: STPG MARK(313)	
FILE NAME: +17+065 Class 2.dgn	PLOT DATE: 2/14/2018
PROJECT LEADER: P. COBURN	DRAWN BY: M. BOGACZYK
DESIGNED BY: M. BOGACZYK	CHECKED BY: P. COBURN
CLASS 2 TOWN HIGHWAY QUANTITY SHEET 8 SHEET 16 OF 17	

SUMMARY BY COUNTY OF CLASS 2 TOWN HIGHWAYS

COUNTY	TOWN	TH NUMBER	TH NAME	MILEAGE	LINEAR FT
WINDHAM COUNTY	DOVER	TH-1	E DOVER RD	0.120	633.60
WINDHAM COUNTY	DOVER	TH-1	DOVER HILL RD	4.250	22,440.00
WINDHAM COUNTY	DOVER	TH-2	HANDLE RD	2.000	10,560.00
WINDHAM COUNTY	DOVER	TH-3	S ACCESS RD	0.230	1,214.40
WINDHAM COUNTY	DOVER	TH-3	TANNERY RD	0.520	2,745.60
WINDHAM COUNTY	DOVER	TH-3	HANDLE RD	0.790	4,171.20
WINDHAM COUNTY	DOVER	TH-4	DORR FITCH RD	1.380	7,286.40
WINDHAM COUNTY	DOVER	TH-5	HANDLE RD	0.520	2,745.60
WINDHAM COUNTY	DOVER	TH-5	N ACCESS RD	0.070	369.60
WINDHAM COUNTY	DOVER	TH-5	UPPER HANDLE RD	0.336	1,774.08
WINDHAM COUNTY	STRATTON	TH-1	STRATTON-ARLINGTON RD	5.000	26,400.00
WINDHAM COUNTY	STRATTON	TH-2	PIKE FALLS RD	0.530	2,798.40
WINDHAM COUNTY	STRATTON	TH-2	STRATTON MTN ACCESS RD	1.230	6,494.40
WINDHAM COUNTY	STRATTON	TH-2	BRAZERS WAY	0.820	4,329.60
WINDHAM COUNTY	STRATTON	TH-3	MOUNTAIN RD	4.460	23,548.80
WINDHAM COUNTY	STRATTON	TH-3	W JAMAICA RD	2.200	11,616.00
WINDHAM COUNTY	WHITINGHAM	TH-1	ROUTE 8A	3.300	17,424.00
WINDHAM COUNTY	WHITINGHAM	TH-2	TUNNEL ST	1.270	6,705.60
WINDHAM COUNTY	WHITINGHAM	TH-3	GOODNOW RD	0.630	3,326.40
WINDHAM COUNTY	WHITINGHAM	TH-3	KENTFIELD RD	3.210	16,948.80
WINDHAM COUNTY	WHITINGHAM	TH-3	POVERTY ROW	0.670	3,537.60
WINDHAM COUNTY	WHITINGHAM	TH-3	TOWN HILL RD	0.090	475.20
WINDHAM COUNTY	WHITINGHAM	TH-3	WILMINGTON CROSS RD	2.030	10,718.40
WINDHAM COUNTY	WILMINGTON	TH-1	COLDBROOK RD	2.730	14,414.40
WINDHAM COUNTY	WILMINGTON	TH-2	E DOVER RD	0.920	4,857.60
WINDHAM COUNTY	WILMINGTON	TH-3	HIGLEY HILL RD	3.300	17,424.00
WINDHAM COUNTY	WILMINGTON	TH-4	LAKE RAPONDA RD	0.610	3,220.80
WINDHAM COUNTY	WILMINGTON	TH-5	HAYSTACK RD	1.190	6,283.20
WINDHAM COUNTY	WILMINGTON	TH-5	MANN RD	1.700	8,976.00
WINDHAM COUNTY	WILMINGTON	TH-5	RAY HILL RD	0.600	3,168.00
WINDHAM COUNTY TOTAL				46.706	3,356,675.52
COUNTY	TOWN	TH NUMBER	TH NAME	MILEAGE	LINEAR FT
WINDSOR COUNTY	LUDLOW	TH-2	MOUNTAIN RD	0.410	2,164.80
WINDSOR COUNTY	LUDLOW	TH-3	DUG RD	0.220	1,161.60
WINDSOR COUNTY	LUDLOW	TH-3	MOUNTAIN RD	0.130	686.40
WINDSOR COUNTY	LUDLOW	TH-4	HIGH ST	0.530	2,798.40
WINDSOR COUNTY	LUDLOW	TH-4	MAIN ST	0.080	422.40
WINDSOR COUNTY	LUDLOW	TH-4	DUG RD	0.220	1,161.60
WINDSOR COUNTY	LUDLOW	TH-5	PLEASANT ST EXT	0.450	2,376.00
WINDSOR COUNTY	LUDLOW	TH-6	COMMONWEALTH AVE/BARKER RD	2.570	13,569.60
WINDSOR COUNTY	LUDLOW VILLAGE	TH-5	PLEASANT ST	0.980	5,174.40
WINDSOR COUNTY	LUDLOW VILLAGE	TH-6	COMMONWEALTH AVE	0.600	3,168.00
WINDSOR COUNTY	PLYMOUTH	TH-1	COOLIDGE MEMORIAL RD	0.410	2,164.80
WINDSOR COUNTY	PLYMOUTH	TH-2	KINGDOM RD	2.700	14,256.00
WINDSOR COUNTY	PLYMOUTH	TH-3	BUSWELL POND RD	0.610	3,220.80
WINDSOR COUNTY TOTAL				9.910	3,655,608.00

SEGMENT LENGTH IS PROVIDED FOR INFORMATIONAL PURPOSES ONLY. THESE LENGTHS REPRESENT ROAD CENTERLINE LENGTH AND SHALL NOT BE USED FOR MEASURING QUANTITIES FOR PAYMENT.

PROJECT NAME: STATEWIDE SOUTHWEST REGION
PROJECT NUMBER: STPG MARK(313)

FILE NAME: +17+065 Class 2.dgn PLOT DATE: 2/14/2018
PROJECT LEADER: P. COBURN DRAWN BY: M. BOGACZYK
DESIGNED BY: M. BOGACZYK CHECKED BY: P. COBURN
CLASS 2 TOWN HIGHWAY QUANTITY SHEET 9 SHEET 17 OF 17