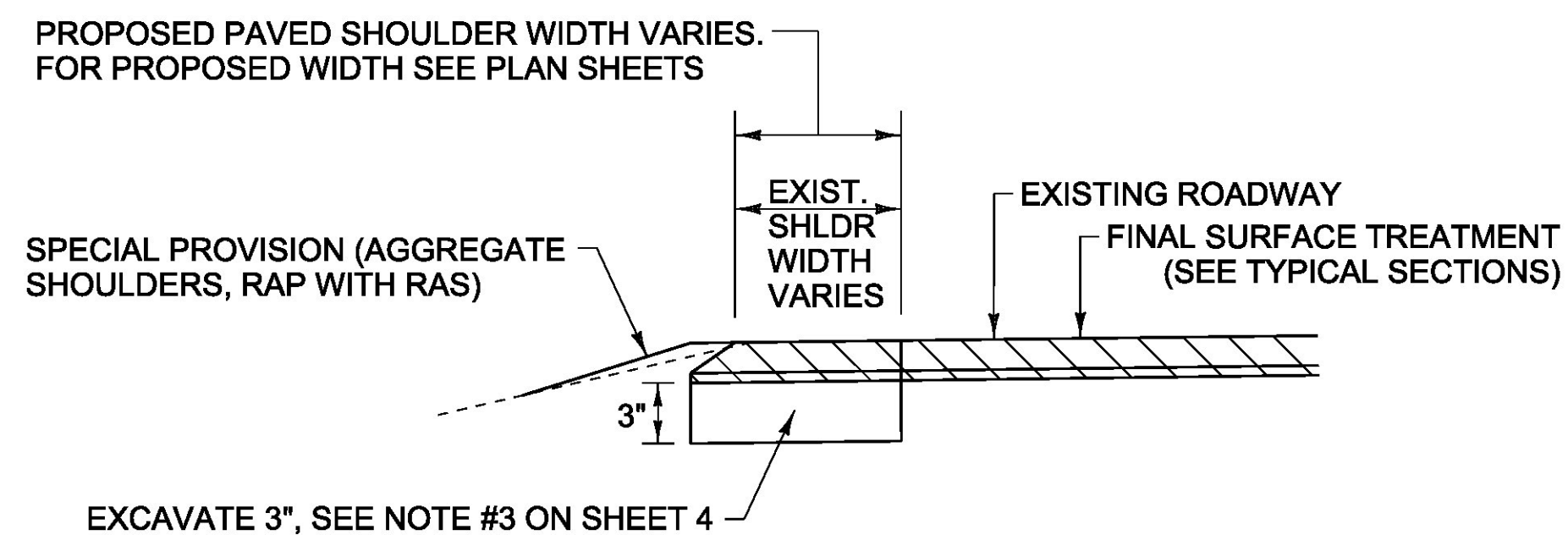


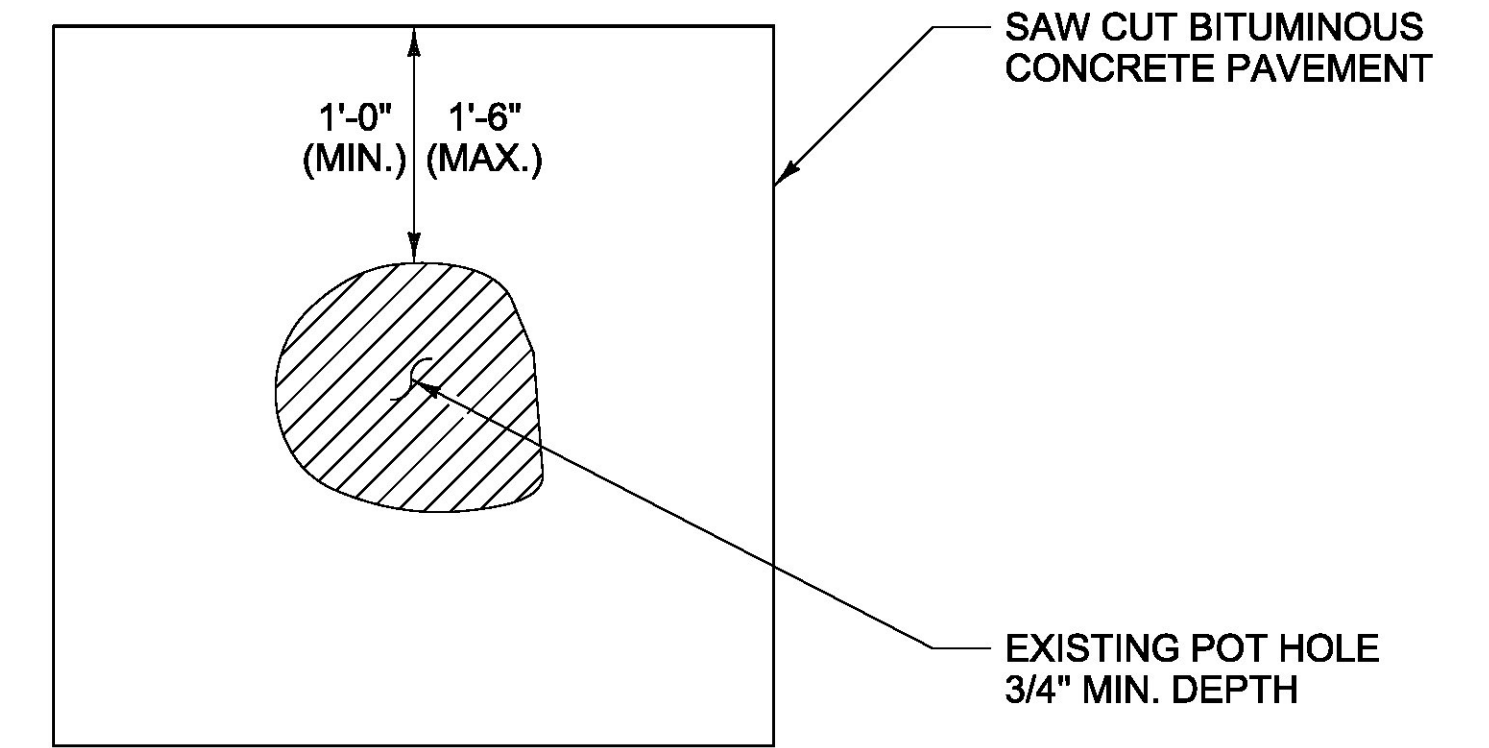
**MAINLINE APPROACH DETAIL**

DANVILLE - 0+20.00  
ST. JOHNSBURY - S 81+13.00

NOTE 1: TEMPORARY ASPHALT WEDGE SHALL BE REMOVED PRIOR TO PAVING. PAYMENT FOR ASPHALTIC WEDGE IS INCIDENTAL TO 490.30 - SUPERPAVE BITUMINOUS CONCRETE PAVEMENT OR 406.25 - BITUMINOUS CONCRETE PAVEMENT.



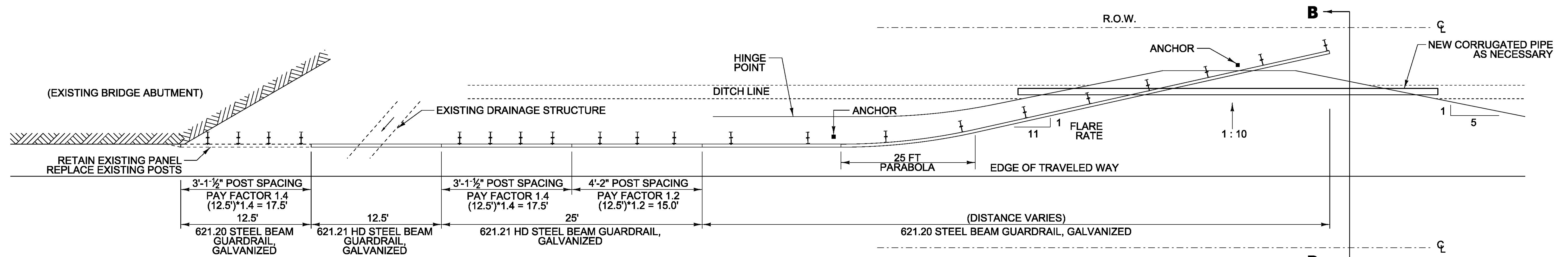
**SHOULDER RECONSTRUCTION DETAIL**



**TYPICAL - POT HOLE REPAIR**

NOTE:

EMULSIFIED ASPHALT SHALL BE APPLIED AT ALL PATCH INTERFACES AT A RATE OF 0.25 - 0.50 GAL/SY. EMULSIFIED ASPHALT SHALL MEET THE REQUIREMENTS OF SECTION 404 AND WILL BE CONSIDERED INCIDENTAL TO SPECIAL PROVISION (BITUMINOUS CONCRETE PAVEMENT SURFACE PREPARATION, TYPE I)

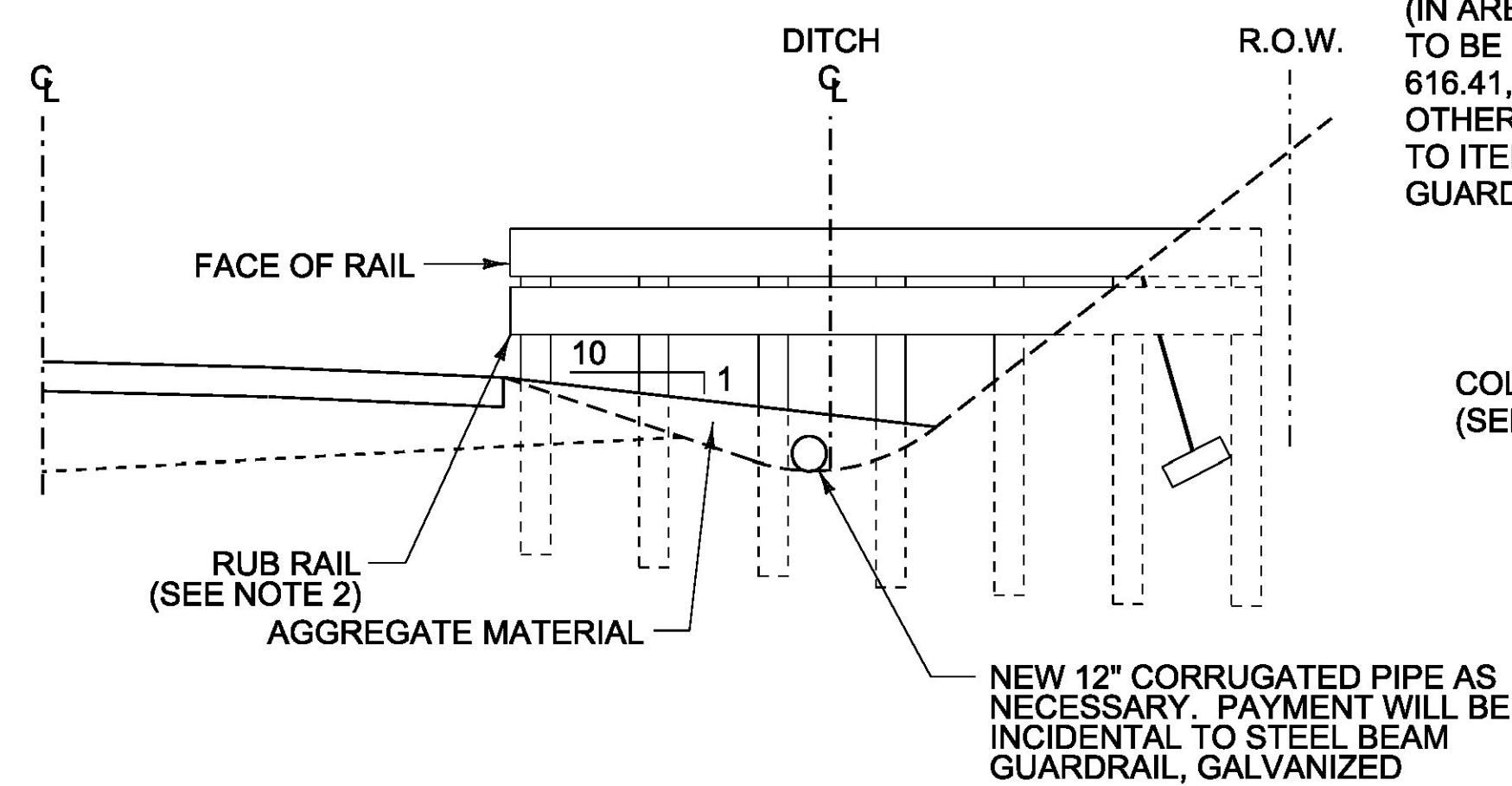


**(MODIFIED) DETAIL FOR BURIED GUARDRAIL ENDS INTO BACKSLOPES**

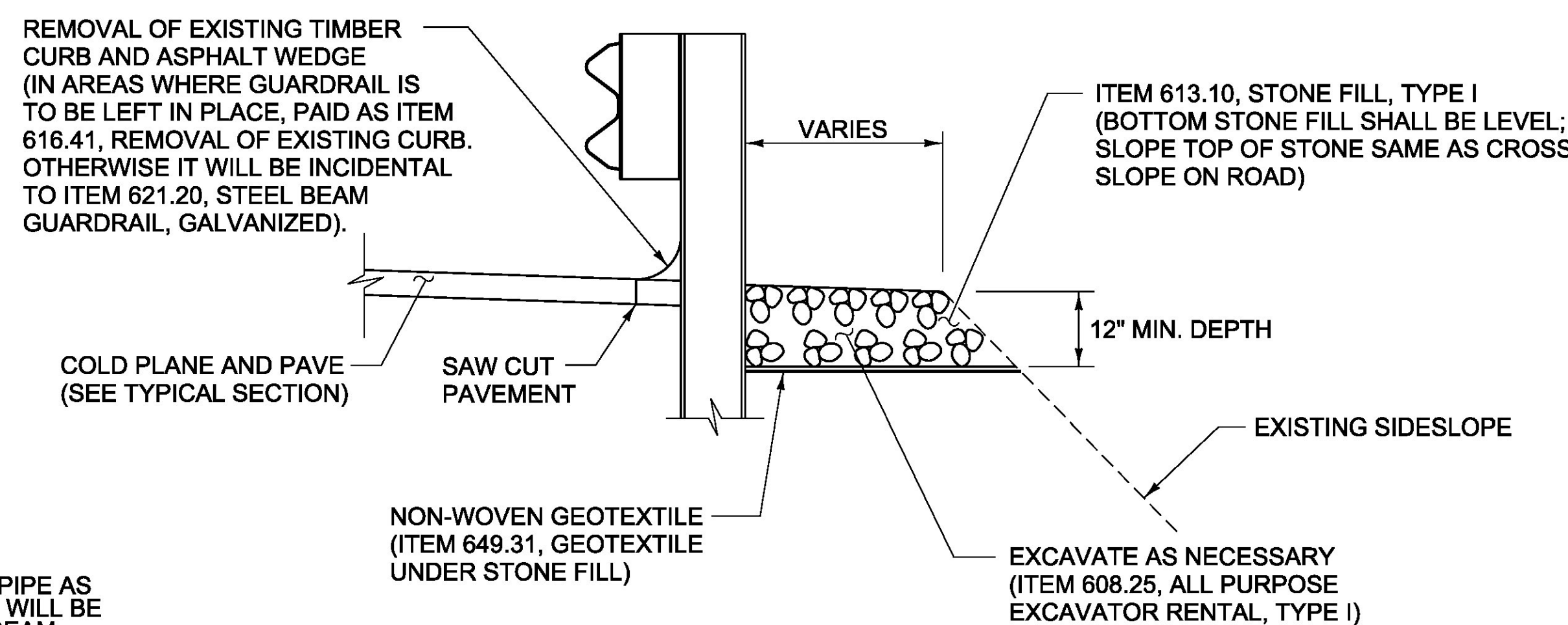
STA 46+75 LT - DANVILLE

**NOTES:**

1. PRIMARY RAIL SHALL REMAIN AT A CONSTANT HEIGHT (LEVEL) RELATIVE TO THE HEIGHT OF RAIL AT THE EDGE OF SHOULDER.
2. ADDITION OF RUB RAIL IS REQUIRED WHEN OPENING BENEATH PRIMARY RAIL EXCEEDS 18 INCHES RUB RAIL EXTENDS FROM THE EDGE OF SHOULDER TO THE BACK SLOPE.

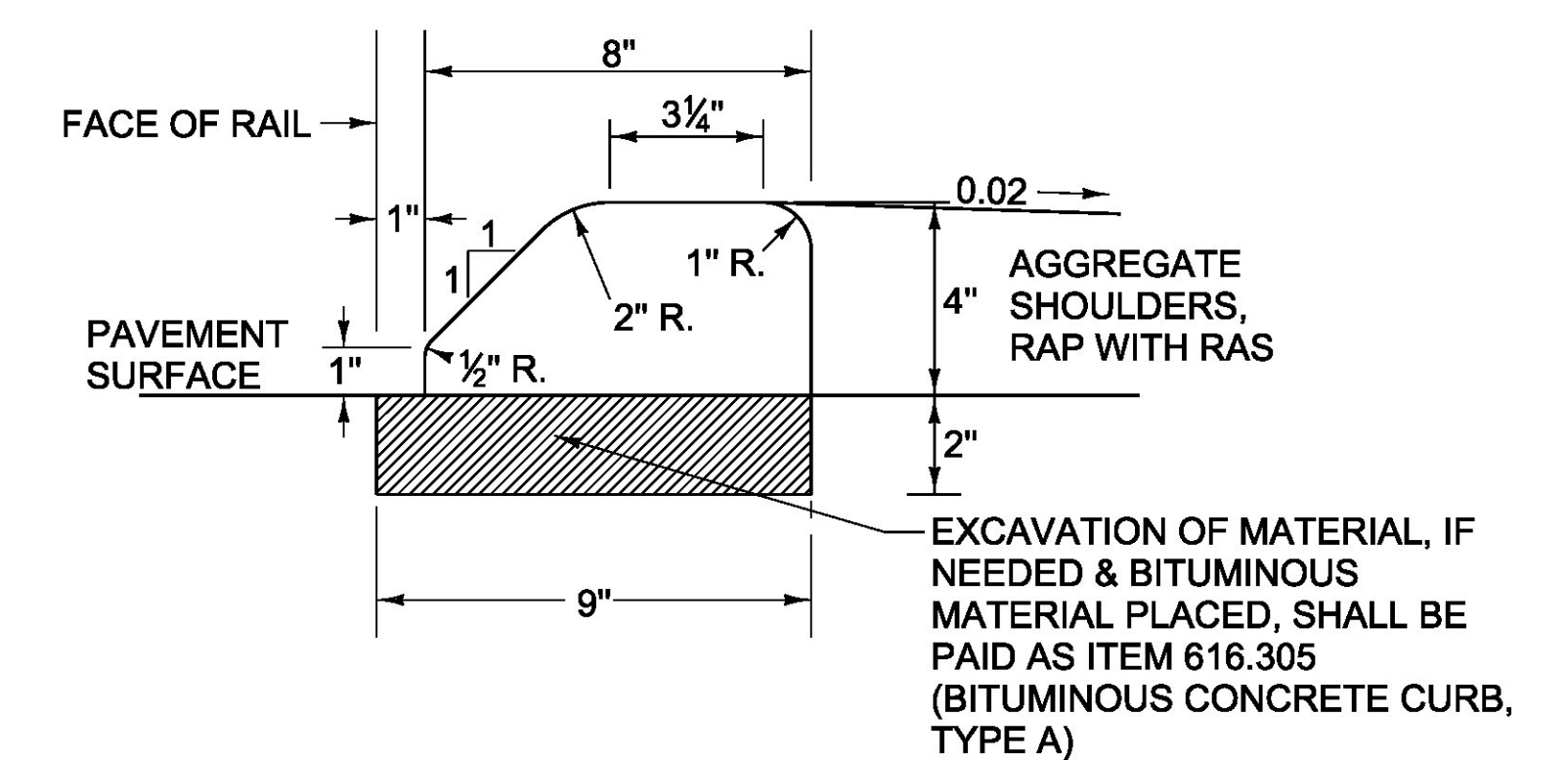


**SECTION B-B**



**SHOULDER RECONSTRUCTION DETAIL**

STA 2+00 TO 6+90 LT - DANVILLE



**USE ONLY WITH STEEL BEAM GUARDRAIL BITUMINOUS CONCRETE CURB, TYPE A**

S 75+46 TO S 80+50 LT - ST. JOHNSBURY

1. HEIGHT OF REVEAL OF CURB SHALL NOT EXCEED FOUR INCHES WHERE DESIGN OR POSTED SPEED IS EQUAL TO OR GREATER THAN 40 MPH AND WHEN INSTALLED WITH GUARDRAIL (STANDARD SHAPE TO BE BURIED TO THIS DEPTH).
2. BITUMINOUS CONCRETE AND CURB SHALL BE IN CONFORMANCE WITH SECTION 616.

PROJECT NAME:	DANVILLE-ST. JOHNSBURY	PLOT DATE:	05-JUN-2017
PROJECT NUMBER:	STP FPAV(9)	DRAWN BY:	B. KIPP
FILE NAME:	16v148.dgn	DESIGNED BY:	B. KIPP
		CHECKED BY:	M. FOWLER
		DETAIL SHEET	SHEET 6 OF 33

NOT TO SCALE