

DURABLE 4 INCH WHITE LINE, TYPE A TAPE
 TEMPORARY 4 INCH WHITE LINE, PAINT
 (ALL LINES WILL INCLUDE EDGE LINE BREAKS
 AND RADII FOR SIDE ROADS)
 STA. 89+00 TO 92+50.56, SOLID LT & RT
 STA. 89+63 TO 92+21.5, EDGE LINE, DIAGONALS
 & PARKING STALLS
 (U.S. CUSTOMS AND IMMIGRATION DRIVE)
 (SEE NOTE 4)

DURABLE 4 INCH YELLOW LINE, TYPE A TAPE
 TEMPORARY 4 INCH YELLOW LINE, PAINT
 (ALL LINES WILL INCLUDE $\frac{1}{2}$ BREAKS FOR SIDE ROADS)
 STA. 89+00 TO 92+50.56, SOLID LT & RT
 STA. 89+63 TO 92+21.5, DOUBLE SOLID LT,
 (U.S. CUSTOMS AND IMMIGRATION DRIVE)
 STA. 90+62 TO 90+87, DIAGONALS SOLID LT,
 (U.S. CUSTOMS AND IMMIGRATION DRIVE)
 (SEE NOTE 4)

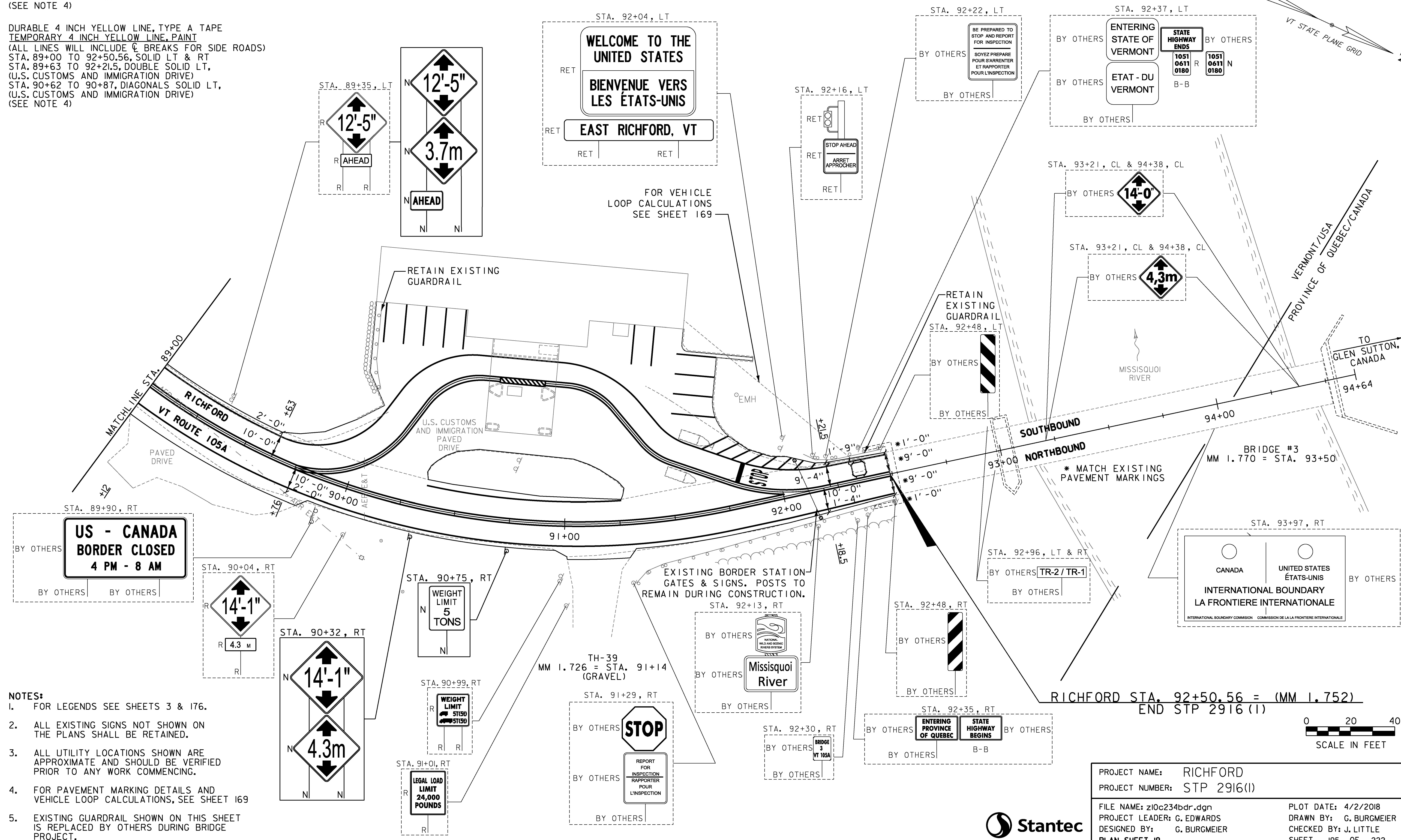
DURABLE 24 INCH STOP BAR, TYPE A TAPE
 TEMPORARY 24 INCH STOP BAR, PAINT
 STA. 91+81, LT (U.S. CUSTOMS AND IMMIGRATION DRIVE)

DURABLE LETTER OR SYMBOL, TYPE D TAPE
 TEMPORARY LETTER OR SYMBOL, PAINT
 STA. 91+91, LT "STOP" (U.S. CUSTOMS AND IMMIGRATION DRIVE)

PAINTED CURB
 STA. 90+35 TO 91+26, LT

REMOVING SIGNS
 AS SHOWN - 7

VEHICLE LOOP DETECTOR
 STA. 92+35, LT



- NOTES:
- FOR LEGENDS SEE SHEETS 3 & 176.
 - ALL EXISTING SIGNS NOT SHOWN ON THE PLANS SHALL BE RETAINED.
 - ALL UTILITY LOCATIONS SHOWN ARE APPROXIMATE AND SHOULD BE VERIFIED PRIOR TO ANY WORK COMMENCING.
 - FOR PAVEMENT MARKING DETAILS AND VEHICLE LOOP CALCULATIONS, SEE SHEET 169
 - EXISTING GUARDRAIL SHOWN ON THIS SHEET IS REPLACED BY OTHERS DURING BRIDGE PROJECT.

PROJECT NAME:	RICHFORD
PROJECT NUMBER:	STP 2916(I)
FILE NAME:	z10c234bdr.dgn
DESIGNED BY:	G. BURGMEIER
PLANNED BY:	G. BURGMEIER
PROJECT LEADER:	G. EDWARDS
CHECKED BY:	J. LITTLE
PLOT DATE:	4/2/2018
DRAWN BY:	G. BURGMEIER
SHEET	195 OF 222

